

IN THIS ISSUE

- Products and Approvals
- CPDS
- Design Philosophies
- Golden Thread
- Brochures
- New Training Facilities
- Video Guides
- Diversity & Inclusion



Head Office:

Delta House, Merlin Way, North Weald, Epping, Essex, CM16 6HR

01992 523 523 | info@deltamembranes.com | www.deltamembranes.com

© 2019 Delta Membranes All Rights Reserved

Introduction

As 2019 winds to a close, we're recapping on some of our best achievements in Structural Waterproofing, from welcoming new products and product approvals to launching CPDs – we can't wait to see what 2020 brings!!



Head Office:

Delta House, Merlin Way, North Weald, Epping, Essex, CM16 6HR

01992 523 523 | info@deltamembranes.com | www.deltamembranes.com



EXPANDING WATERPROOFING PRODUCTS AND APPROVALS

We were delighted to announce back in February the achievement of British Board of Agrément certification for our NB1 mineral coated waterproofing slurry, with crystallising and capillary plugging agents this product offers excellent resistance to pressure and abrasion as well as chemical and sulphate resistance.

This was shortly followed by our BDA Approval of DualProof our Type A, robust, flexible and high-performance waterproof, damp proof, gas proof membrane that gives concrete protection from chemicals.

By July we had launched our new AT 800 membrane – an innovative Type C Drainage membrane which satisfies both BS 8102:2009 and BS 8485:2015+A1:2019 to lessen the complexities of waterproofing and ground gas protection simultaneously!

Head Office:

Delta House, Merlin Way, North Weald, Epping, Essex, CM16 6HR

01992 523 523 | info@deltamembranes.com | www.deltamembranes.com



CPD AND CIWEM ACCREDITATION FOR CPDS

Throughout 2019 we have actively embraced the Golden Thread of Information and promotion of Best Practice along with Education by launching 2 very on-topic CPD Seminars.

Our "Flood Resilience" RIBA and CIWEM accredited CPD Seminar provides practical insights in to flood resilience, resistance and recoverability technologies and covers important topics such as the environmental benefits, assessments of flood water entering structures, specification considerations, design principles and how measures work to enable families to continue living in their home and businesses to continue after a flood event.

Our RIBA approved CPD Seminar entitled "Reducing Risk in Type C Systems using Predictive Maintenance" provides architects, specifiers, warranty providers and contractors an overview of adopting predictive maintenance in Type C Systems to reduce the risk of sump pump failures. Predictive Maintenance is ideal for a sump pump system which has a critical operational function.

Head Office:

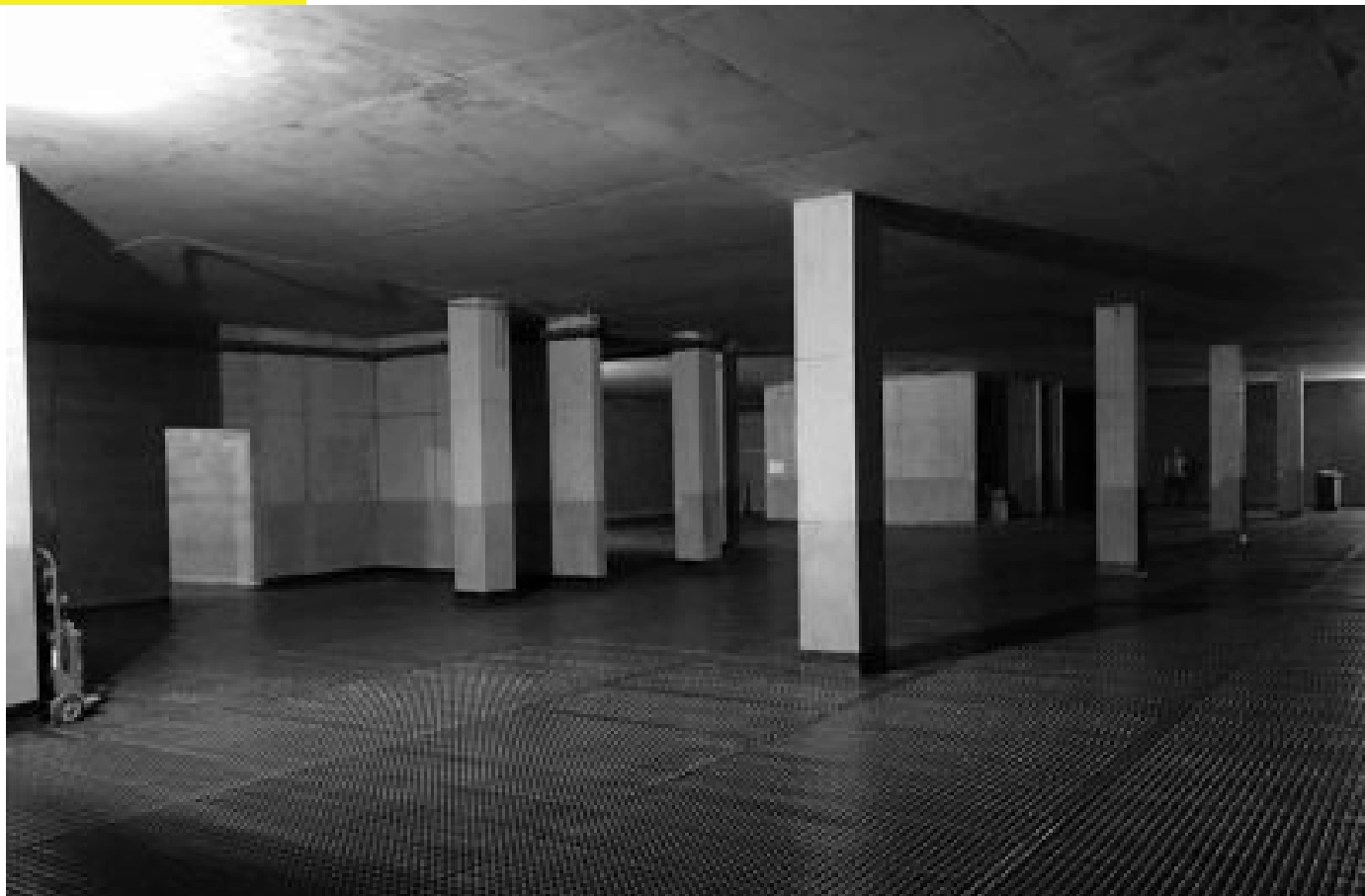
Delta House, Merlin Way, North Weald, Epping, Essex, CM16 6HR

01992 523 523 | info@deltamembranes.com | www.deltamembranes.com

DESIGN PHILOSOPHIES NURTURED

Project failure can happen to any project. There are an infinite number of reasons for failure. In most cases, failure is controllable. There are many common pitfalls when it comes to designing a waterproofing system. Products do not fail! When failures occur, it is due to the design and build philosophy not being correct. The devil is in the detail – all waterproofing elements must be considered at the construction design stage to be durable and effective.

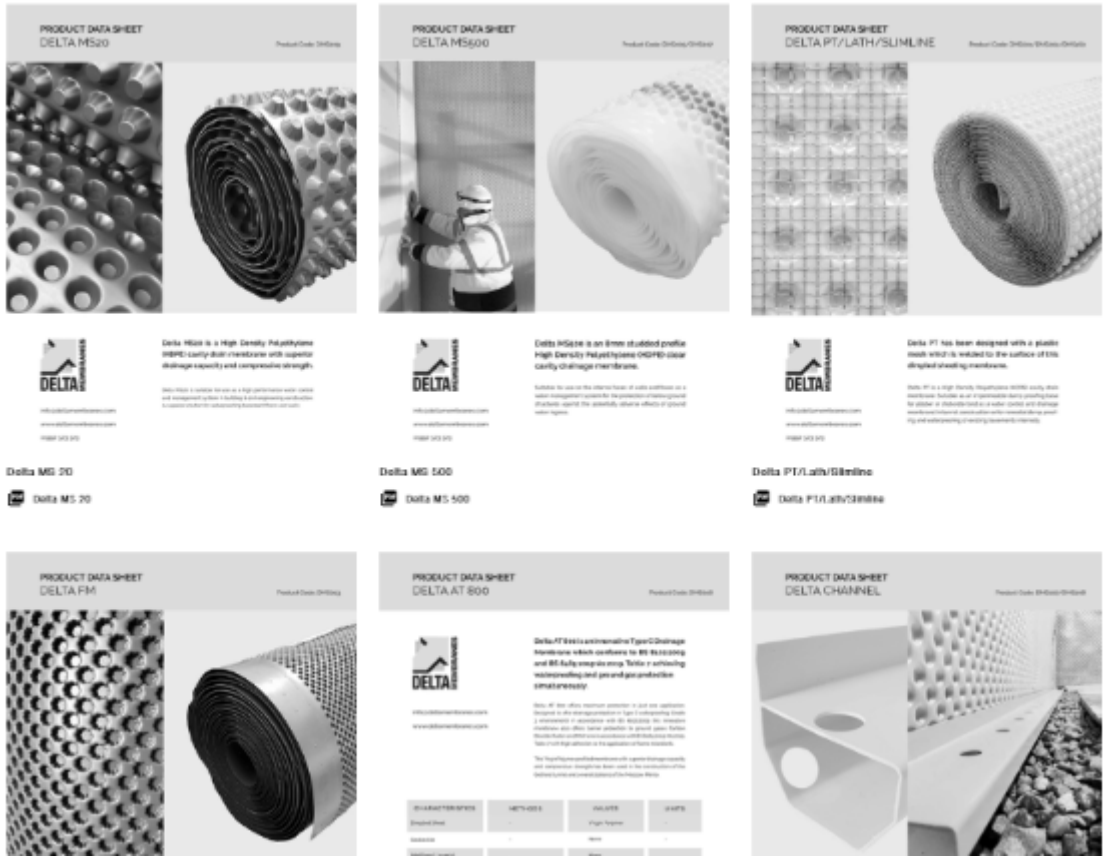
If you would like to find out about structural waterproofing, damp proofing, ground gas protection systems, flood resilience or installing a Delta System. Whatever assistance you are seeking (from new projects to retrofit) we're happy to help.



Head Office:

Delta House, Merlin Way, North Weald, Epping, Essex, CM16 6HR

01992 523 523 | info@deltamembranes.com | www.deltamembranes.com



EXPANDING THE GOLDEN THREAD OF INFORMATION

We strive to develop concepts in the development of sustainable products, processes and systems.

2019 has seen us seek to relaying key information on our products throughout the build chain, from architects to end users. Delta has invested in our website to make readily available all information needed to encourage Best Practice and ultimately encouraging openness, transparency and accountability. Visit our Technical Menu at www.deltamembranes.com

Head Office:
 Delta House, Merlin Way, North Weald, Epping, Essex, CM16 6HR
 01992 523 523 | info@deltamembranes.com | www.deltamembranes.com



INSPIRING BROCHURES

AND WHITE PAPERS

A high for Delta, has been us widening our suite of corporate brochures and an introduction of white papers. We will continue to promote Best Practice and guiding principles for all customers, registered installers and end users to enable the development of supportive working.



HOW-TO

VIDEO GUIDES

We have produced several video guides to assist users with the installation, application and mixing techniques. We have a few finishing touches to add before these go live on our YouTube and Website – but we hope to be launching these any day!



EDUCATION

Delta has increased its capacity and facilities at its training centre in Epping to accommodate the growing demand for installation and application training covering the latest innovations in Cavity Drainage Systems, Sump & pump systems, the Koster range and Memtech gas protection systems. Enabling Delta to undertake practical hands-on training using working equipment, alongside its existing classroom-based facility.

As part of a widening focus in the North, Delta is also offering courses in Wakefield and Scotland.



DIVERSITY AND INCLUSION

Diversity and inclusion are a sizeable challenge within the industry, as a leading manufacturer Delta saw that leadership skills and examples could be set to promote diversity and inclusion. In facilitating a strong support network, The Women of Waterproofing Networking Group was launched. The Women of Waterproofing Networking Group remains the only scheme in the UK waterproofing industry to promote diversity and inclusion.

Head Office:

Delta House, Merlin Way, North Weald, Epping, Essex, CM16 6HR

01992 523 523 | info@deltamembranes.com | www.deltamembranes.com

**Thank you for reading our
Year in Review!**

**Wishing you a very
Merry Christmas
and
the happiest of New Years**

NEED ANY HELP?

info@deltamembranes.com

01992 523 523

**Delta House,
Merlin Way,
North Weald,
Epping,
Essex,
CM16 6HR**