

**MFE** GLASS  
PARTITIONING



For more information please contact us on

[info@glasspartitioning-mfe.co.uk](mailto:info@glasspartitioning-mfe.co.uk)  
[www.glasspartitioning-mfe.co.uk](http://www.glasspartitioning-mfe.co.uk)





DORMA Hüppe Varitrans provides the perfect perspective for a generous spatial ambience imbued with modern styling elegance. Solutions implemented with this system create an atmosphere in which people feel comfortable and where communication is positively promoted.

The sliding translucent and transparent glass elements are individually operable and create an overall impression of inviting openness and transparency. Almost any configuration can be accommodated thanks to the exceptional flexibility inherent in the Varitrans system. Attractive glass designs can be incorporated to provide a tailored atmosphere for rooms in which the view is enhanced in every respect.

This type of interior design component is ideal for augmenting interior mobility and flexibility – whether for work or leisure purposes. It is the perfect solution for banks and shopping malls, show rooms and galleries, and even churches and museums. In hotels, restaurants and canteens, the effect of the all-glass partition is as fascinating as it is in foyers, entrance halls and meeting and conference rooms. Once you look into the possibilities, you quickly become aware that the range of applications is almost limitless.

Whilst remaining stylishly inconspicuous, DORMA Hüppe Varitrans glass panels provide an unimpeded view of the entire space. They provide an ideal functional entrance and closure in buildings, engendering a natural atmosphere uniquely enhanced by elegance and spaciousness.







## Transparency clearly sets the tone.

Sophisticated interior design exudes quality and prestige in many different environments. With DORMA Hüppe Varitrans, creative ideas can be effortlessly transformed into reality. And there are many useful model variants available to facilitate flexibility. Aside from full-wall panels, the range also includes corner and angled elements. Single and double passdoors can likewise be incorporated in any system. The layout can take the form of straight lines, angled configurations, circular segments and even polygons. The individual panels of the DORMA Hüppe Varitrans Automatic (EM) are easy to program, control and operate. In this "electronic" version, the system can even be integrated within sophisticated building management systems. Its

floor-mounted guide rail has been kept deliberately shallow and compact while still ensuring high opening and closing speeds and easy user convenience. The force limitation control ensures that the system comes to a halt as soon as an obstruction is detected for maximum safety. Plus: in the event of a power failure, the system can be manually operated without problem. Different programming modes allow infinitely variable partial and personnel openings as well as the "louvered" through-passage position. The compactness of the drive unit offers particular benefits. The entire system is of the highest quality and comes with a thoroughly proven service record for robustness in daily use.

The continuous, unimpeded view of the entire enclosed space provides for a fluid transition between exterior and interior. Flooded with light, rooms separated by a Varitrans partition have an open, enticing

appearance – barriers are broken down and visitors feel immediately welcome and encouraged to follow their curiosity. DORMA Hüppe Varitrans glass panel systems are effective in every sense of the word.



The lightness of appearance of the partition is the result of a harmonious interplay of function on the one hand and aesthetic awareness on the other.





## Design solutions for increased flexibility.

Like almost no other material, glass enables aesthetic demands to be optimised. Designs in glass are particularly expressive in terms of their creative appearance, ideally combining inherent beauty with practical benefit. The associated solutions are effective, very flexible and impart unique optical elegance. The high-quality safety glass of the DORMA Hüppe Varitrans elements can be screen-printed, provided with a sand-etched décor, or otherwise enhanced by artistic adornment. Companies can also have their logos placed within the

glass partitions in order to underline their corporate identity and communicate their image. With this in-built customisation ability, the range of practical solutions available is virtually inexhaustible. Sand-etched motifs, for example, have the characteristic of creating an ever changing yet always attractive atmosphere with different light conditions. Textured and frosted glass offers superb concealment while at the same time maintaining an attractive translucence. DORMA Hüppe Varitrans comes in a comprehensive portfolio to suit

any contemporary interior design. The "Metalline" series with its flush-mounted single-point fixings of stainless steel and the "Compactline" with its gently curving profiles offer impressive, proven technology down to the last detail – plus all the prestige of sophisticated design.



The bespoke curved profile of the "Compactline" series enhances the feeling of system compactness, as shown in the photo on the left. These continuous profiles are not only robust but also satisfy the very highest aesthetic demands. The design has been singled out for the iF award of "Industrie Forum Design Hannover". All the functional elements are concealed within the profiles and there is no limit to the range of applications and variation possibilities embodied in this system. With its proven technology, it ensures maximum reliability combined with outstanding ease of use.

As can be seen in the photo on the right, the characteristic elements of the "Metalline" series are its single-point fixings. The elegant all-glass appearance achieved through the elimination of frame profiles imparts a sparse elegance that is very much in vogue. The glass mounting and locking functions are performed by a single device. The rear of the fitting takes the form of a smooth surface and the system features unlocking protection to prevent unauthorised opening.

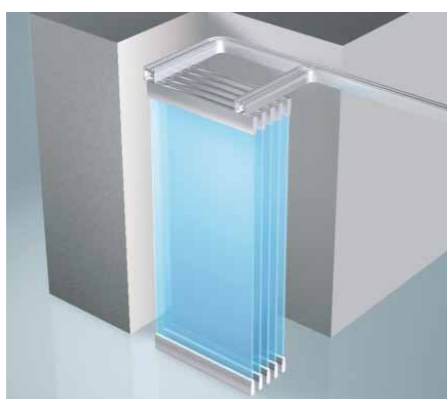


## Perfectly parked in the smallest of spaces.

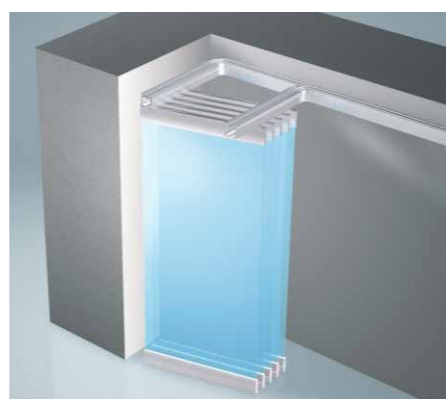
The individual elements of the DORMA Hüppe Varitrans system only require a small amount of space when stacked out of the way. They can therefore be parked in any small pocket or corner for maximum visual tidiness. The individual panels move so easily that transfer to the stacking section and the parking operation itself could

not be easier. The requirements of the manual and automatic modes are, however, different. Consequently, it is advisable during the planning phase to consult DORMA Hüppe as to which stacking track configuration is the best suited to your application. Irrespective of whether the system is automatically or manually operated,

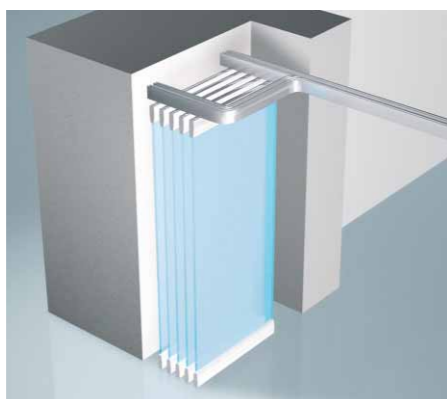
however, maximum functional reliability and convenience are always ensured. Depending on the requirements of the application, the parking of the panels can be implemented in various ways. The following figures show just some of the possibilities available.



A: Parallel stacking in a niche or pocket



B: Slightly angled stacking



C: 90° stacking in an open panel pocket



D: Stacking at a slight angle in the through-passage area



E: Stacking in a U-pocket



F: Left and right "goalpost" stacking





## Intelligence plus technology for supreme reliability.

DORMA Hüppe Varitrans operable glass panel partitions are made to measure, manufactured to the highest precision and fully tested by an external inspectorate (the German TÜV) for safety. Each individual panel is manufactured to exacting demands and thoroughly checked by the in-house specialists of DORMA Hüppe. Only this level of care can guarantee that the system, once installed, satisfies all the customer's requirements in terms of quality of workmanship and

functional reliability in its daily service. However, the specialists from DORMA Hüppe are also available during the planning stage and will design the entire system as well as ensure its perfect installation and commissioning. We offer a fully functioning single-source service backed up by extensive research and development work. The interaction of the individual product groups and divisions, and the pooling of our extensive Group know-how, ensure that we can always deliver

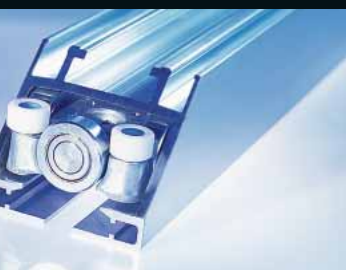
intelligently conceived systems that combine impressive functionality with advanced design. We are thus able to offer the perfect prerequisites for satisfying individual customer demands. The wide range of options available with DORMA Hüppe Varitrans means that the system can be relied on every time to provide the optimum solution for variable room design with aesthetic elegance combined with technological sophistication of an exemplary standard.



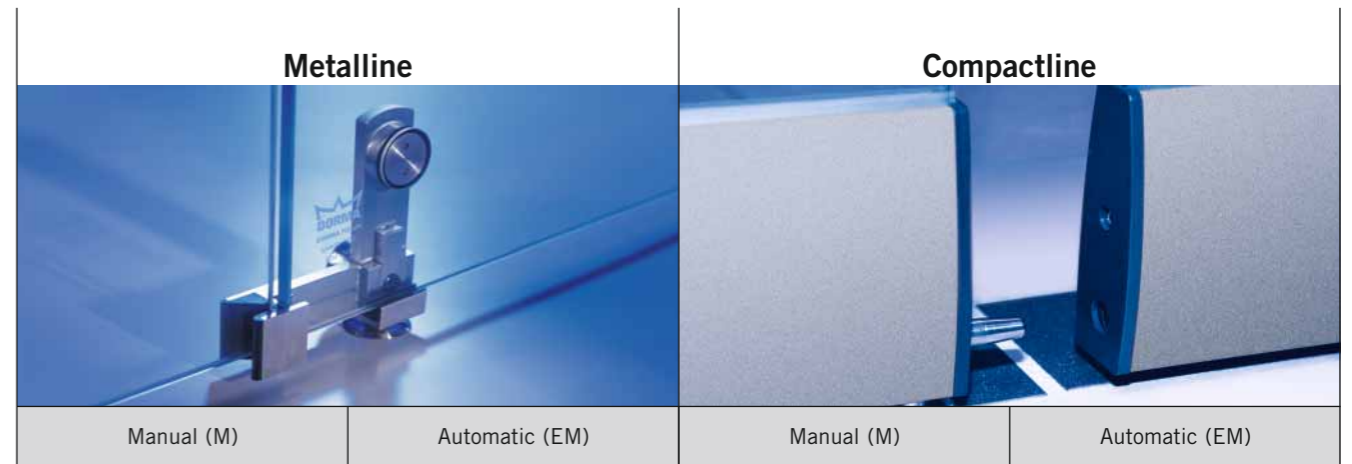
The track system for the automatic EM operator ensures fast traversing and particularly low-noise operation of the elements. Aside from curved configurations, it can also be used for a combination of several systems.



The type K is a new standard track system offering particularly compact dimensions. The mechanically coded branching junctions with curves and track switches ensure easy operation of the panels. Curved configurations are also possible with this track type.



For right-angled branched configurations, we recommend our model R track system and cross-roller carriers. The system can be adapted to a wide range of layout shapes and offers high load-bearing capacities. Guide rollers in the branching junctions and intersections ensure that panels remain level as they cross or change direction.



		Metalline		Compactline	
		Manual (M)	Automatic (EM)	Manual (M)	Automatic (EM)
<b>Benefits</b>	Characteristics	Operable sliding glass panel partition system with flush-mounted single-point fixings of stainless steel for elegant all-glass appearance without profiles		Operable glass sliding panel partition system with elegantly curved profiles providing a continuous, compact appearance	
	Components	All glass (single-point fixings)		All glass (horizontal profiles) and framed glass (horizontal and vertical profiles)	
	Application	Internal applications		Internal applications	
<b>Dimensions</b>	Element width in mm	800–1,300			
	Element height in mm (max.)	3,500	4,000	3,500	4,000
	Element weight in kg (max.)	300	250	300	250
	Glass thickness in mm	TSG: 10, 12		TSG: 10, 12; LSG: 13.5	
<b>Operating system</b>	Manual (M)	Light, manual sliding of the elements. Very simple operation. Minimal operating noise thanks to precision track rails of aluminium.		Light, manual sliding of the elements. Very simple operation. Minimal operating noise thanks to precision track rails of aluminium.	
	Automatic (EM)	Electric single-drive operators for the elements, self-monitoring processor for maximum reliability		Electric single-drive operators for the elements, self-monitoring processor for maximum reliability	
<b>Construction</b>	Glass type	TSG		TSG, LSG	
	Fixing elements	Flush-mounted single-point fixings of stainless steel		Horizontal aluminium clamping profiles; aluminium covers; plastic end covers; optional vertical profile framing	
	Sealing top/bottom	Small clearance between element and track		Small gap between element and track; optional flexible contact seals top/bottom	
<b>Equipment</b>	Glass framing	Stainless steel single-point fixings		All glass: horizontal Profile framed glass: horizontal and vertical	
	Element types	Full wall element, angled element, corner element, wall abutment element		Full wall element, passdoor element (stationary or sliding), angled element, corner element, wall abutment element	
	Passdoor elements with bespoke handle	Fixed single-action passdoor as wall abutment element		Fixed double-action passdoor as wall abutment element; sliding passdoor elements, single or double leaf	
	Door closers	Floor spring for fixed single-action passdoor element		Overhead door closer for sliding passdoor element, floor spring for stationary passdoor element	
	Element locking	Each element locked with a floor bolt; unlocking protection to prevent unauthorised opening; guide, glass mountings and locking device as single functional unit		Locking device provided per element with floor bolt; locking of the elements to one another by interlocking profiles to prevent lever attack ("jemmying")	