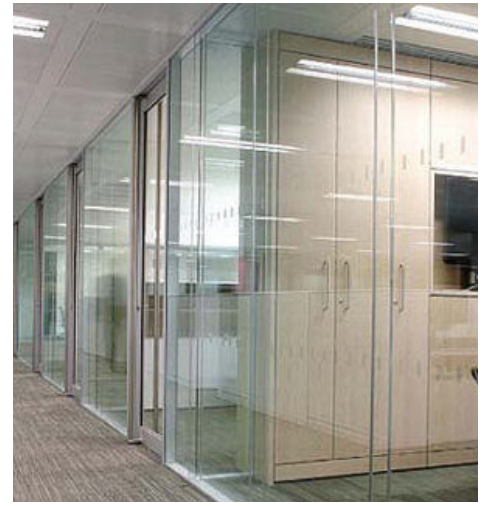
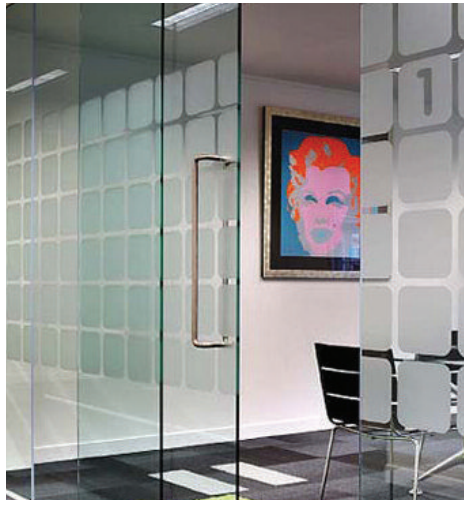
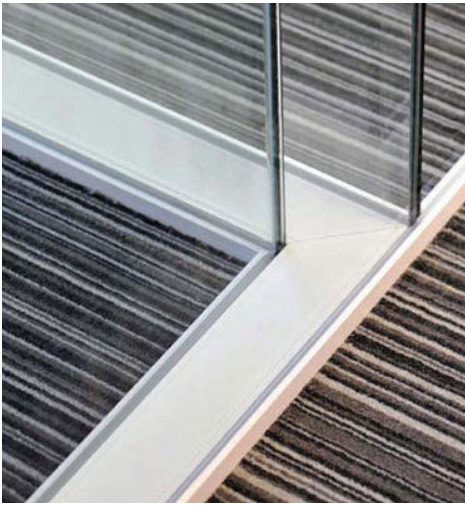
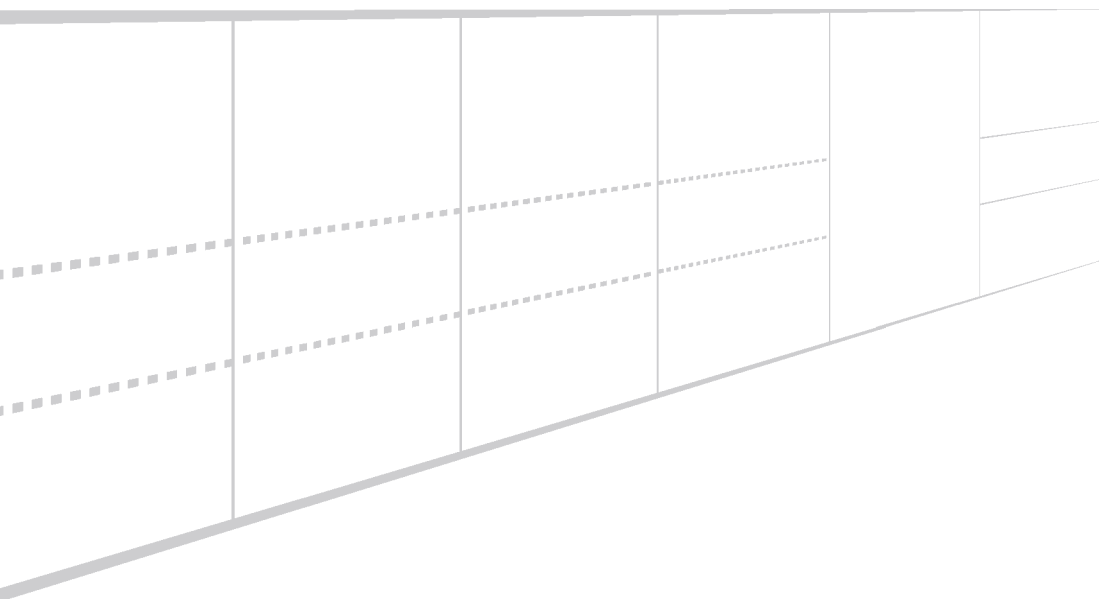


MFE GLASS PARTITIONING

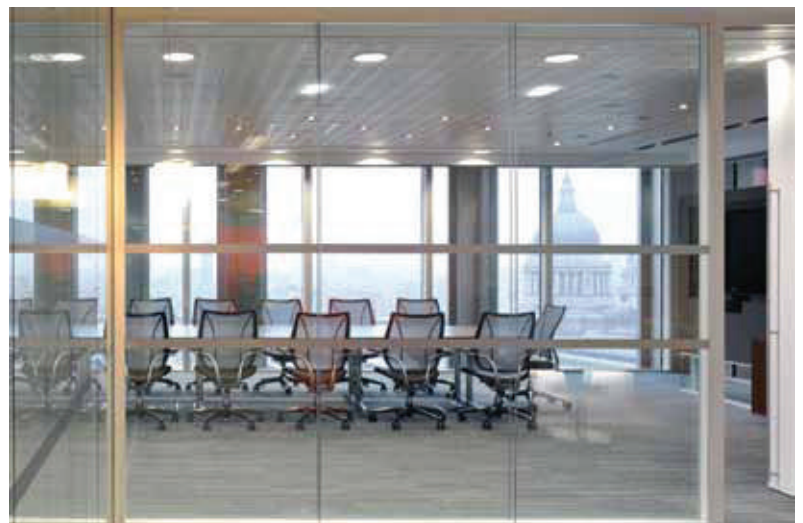


System 8000

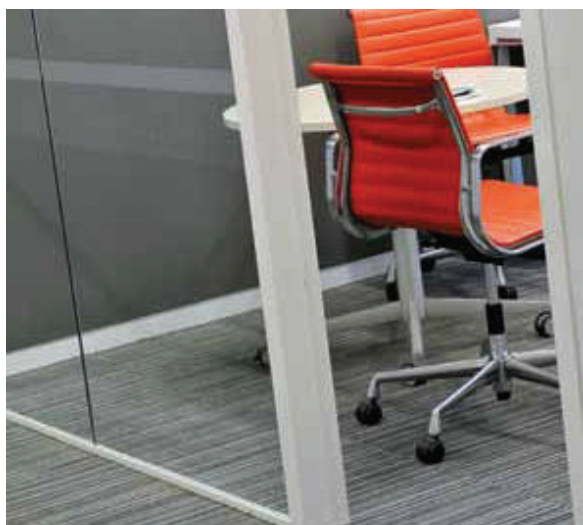


www.glasspartitioning-mfe.co.uk

System 8000 is a fully glazed, frameless partitioning system that complements our range of interior fit-out products. Understanding that every project is different; System 8000 combines the architectural demands of integration and deflection with outstanding acoustic, fire and structural performance.



System 8000 overview	02	Glazing joints	23
Deflection	04	Door integration	29
Integration	06	Glass manifestation	32
System 8000 SG – single glazed	11		
System 8000 NG – 58mm double glazed	15		
System 8000 DG – 105mm double glazed	19		



System 8000 overview

System Description

System 8000 is a fully glazed frameless partitioning system that combines design aesthetics with outstanding fire and acoustic performance, offering specifiers the opportunity to create partitioning without vertical mullions to a maximum height of 4000mm.

System Features

- Available in three widths, Single Glazed, 58mm Double Glazed and 105mm Double Glazed to suit project requirements
- Integration with Metal Ceiling Systems
- Provides up to ± 25 mm of deflection, using a 2-part deflection head
- Provides a seamless integration into drywall, to create a part glazed, part drywall installation
- A variety of head and base tracks to meet specification demands
- Offered in a large variety of paint finishes
- Can be used for atrium glazing

Fire Performance

- Up to 60 minutes Integrity and Insulation
- Can be specified and installed to meet the demands of 30/0, 30/30, 60/0, 60/30 and 60/60
- Tested and independently certified to BS 476

Acoustic Performance

System 8000 can be specified to a range of acoustic performance characteristics, tested to BS 20140 can provide up to 49dB if required.

- Single Glazed up to 37dB
- 58mm Double Glazed up to 45dB
- 105mm Double Glazed up to 47dB

System 8000 can also be specified as twin glazed to provide up to 49dB sound attenuation. For further details contact our technical team.

Strength and Stability

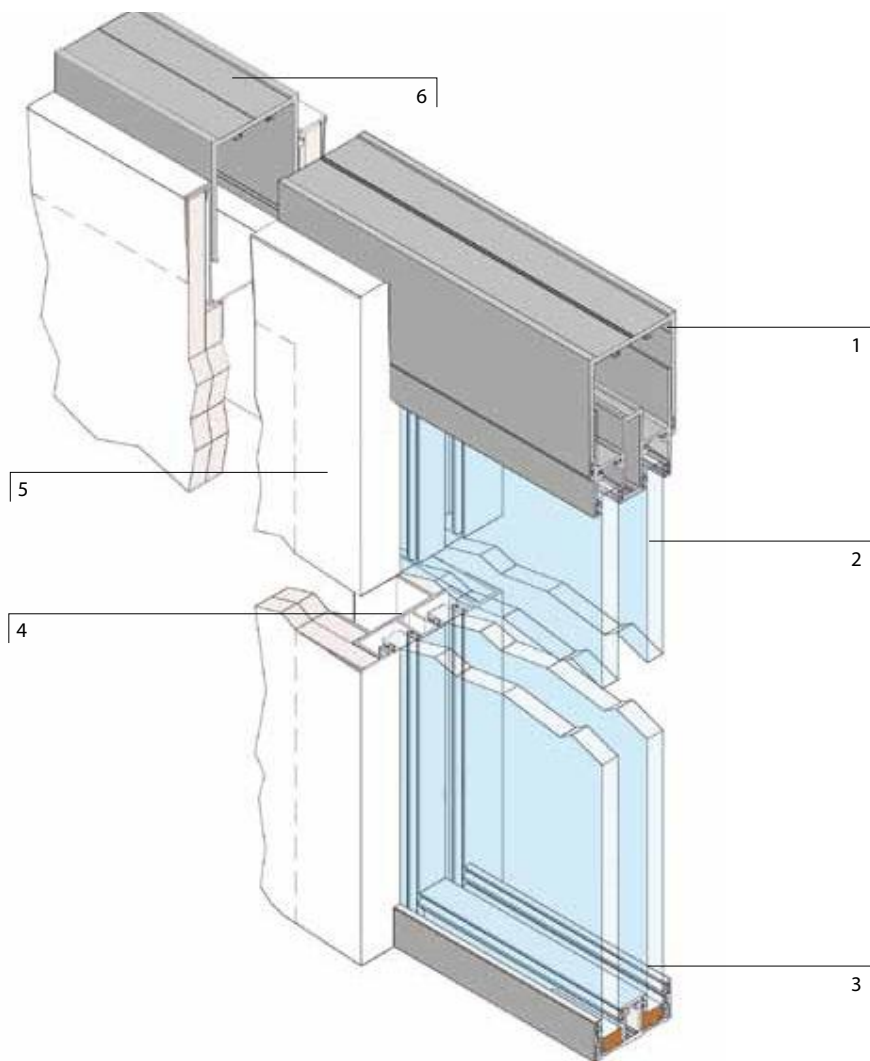
System 8000 can be specified to a range of structural performance characteristics tested to BS 5234 can provide:

- 'Medium' duty
- 'Heavy' duty
- 'Severe' duty

For further details, please contact a member of the technical team.



System 8000 technical summary



- 1) Range of head channels that provide ceiling integration and deflection heads up to ± 25 mm
- 2) Full range of glass options, including fire rated, acoustic, laminated, electric privacy glass and innovative glass joint options
- 3) A range of base channels to provide integration with differing floor finishes
- 4) A range of vertical drywall integration options
- 5) Drywall / Drywall +
- 6) Seamless integration into drywall and Drywall +

Performance Summary

	Deflection	Acoustic Performance	Fire Performance	Structural Performance
System 8000 SG	up to ± 25 	up to 37dB	up to 60/60	up to 'severe' duty
System 8000 NG	up to ± 25 	up to 45dB	up to 60/60	up to 'severe' duty
System 8000 DG	up to ± 25 	up to 47dB	up to 60/60	up to 'severe' duty

MFE Glass Partitioning are able to offer fire performance partitioning up to FD 60/60 (60 minute integrity and 60 minute insulation). A range of construction materials and builds can provide different fire performance levels, including 30/0, 30/30, 60/0, 60/30 and 60/60. The information and sections shown within this brochure are indicative of standard non-performance systems. A further range of sections manufactured from timber and steel is available, depending on performance requirements. For further information, please contact a member of the technical team.

Deflection overview

Deflection Technology

In today's built environment it is essential when designing and installing partitioning systems to allow for suitable building slab deflection.

In new building projects dead and live loads can cause significant movement in some long-span floor systems. A live load will almost certainly cause some degree of movement which impacts on the space between the floor and ceiling slab. Partitioning 'deflection' specification is an important consideration on any new build or refurbishment.

System 8000 fully glazed partitioning system includes a number of different head details that are designed to provide up to $\pm 25\text{mm}$ deflection. The system can also be designed to provide greater levels of deflection where required.

Deflection Performance

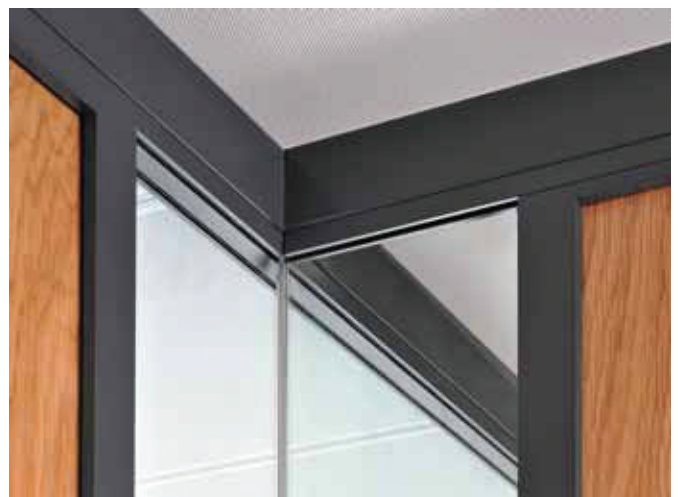
System 8000 is completely tailored to project requirements, fulfilling a full range of deflection requirements including:

- $\pm 25\text{mm}$ deflection using a minimal 2-part head track
- $\pm 15\text{mm}$ deflection using a single piece head track
- Bespoke deflection option where greater than $\pm 25\text{mm}$ is specified

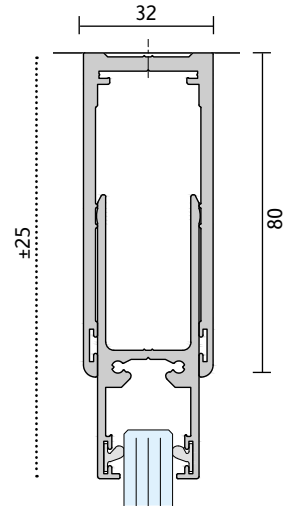
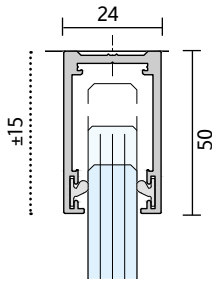
Glass and Drywall Deflection

A key design feature allows for clean and seamless glass integration into Drywall +.

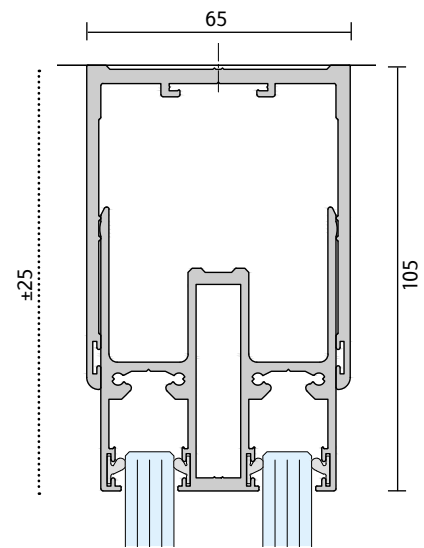
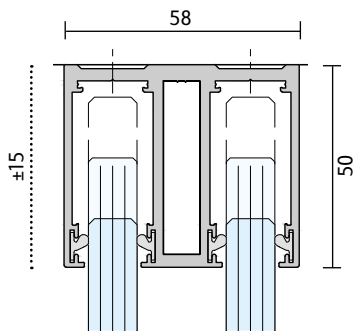
This aesthetic detail is enhanced as both the glass and drywall elevations utilise the same head detail to create a seamless deflection track, this allows for equal deflection movement across the combined partitioning systems.



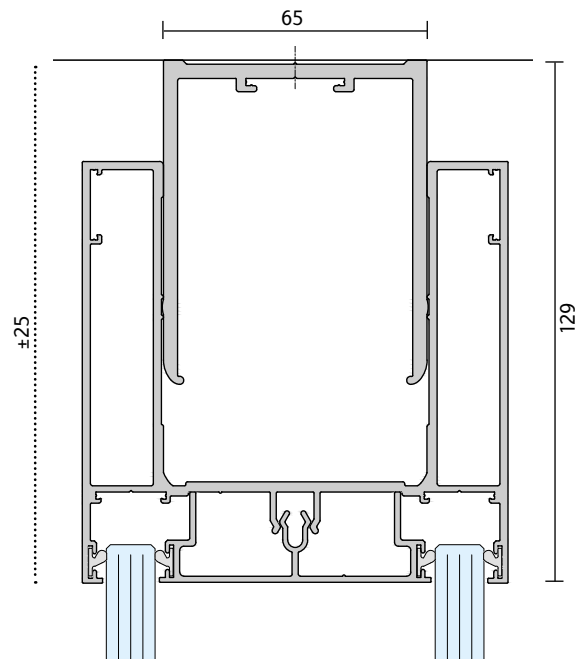
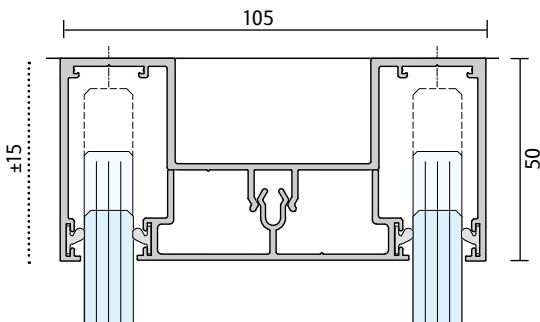
System 8000 SG Deflection Head Detail



System 8000 NG Deflection Head Detail



System 8000 DG Deflection Head Detail



	Deflection Tolerance	
	± 15mm	± 25mm
System 8000 SG	✓	✓
System 8000 NG	✓	✓
System 8000 DG	✓	✓

Integration overview

Drywall Integration

System 8000 can be used as a stand alone glass partitioning system but is also designed to integrate with MFE Glass Partitioning Metal Ceiling Systems, plasterboard ceilings, drywall and MFE Glass Partitioning Drywall +.

System 8000 allows for seamless integration from glass into solid. Glazed sections recess into a drywall junctions to provide a single walled partitioning system of both glass and drywall.

Metal Ceiling Integration

System 8000 is designed to integrate with MFE Glass Partitioning Metal Ceiling Systems. This integration design ensures no installation damage is sustained to the ceiling tiles or grid system. This prevents long-term refurbishment costs to the client and tenants.

Plasterboard / MF Ceiling Integration

System 8000 can be recessed into plasterboard ceilings using glazing reveal channels to give the impression of a glass partitioning system with no head or wall abutment track.

Drywall Integration

System 8000 can integrate between glass and drywall at any point in a partitioning floor plan, to offer choice between glazed and solid partitioning.

The use of multiple junctions provides innovative design layouts. Junctions between the glass and drywall are recessed to provide a clean and seamless joint and are manufactured in single or 3-way junctions, with a range of in-line and 3-way integration profiles available.

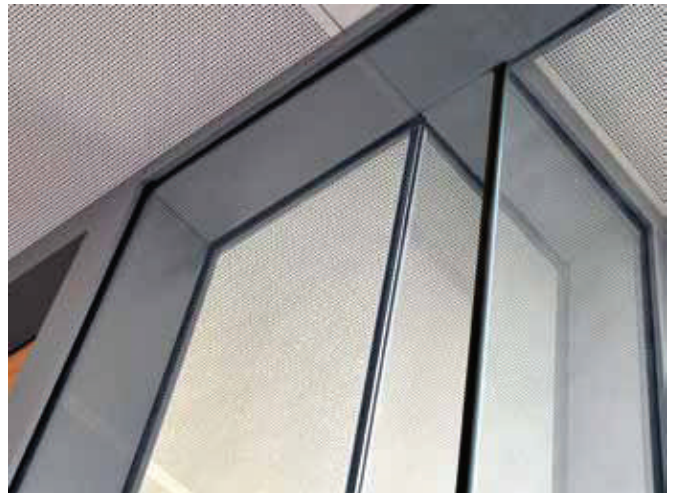
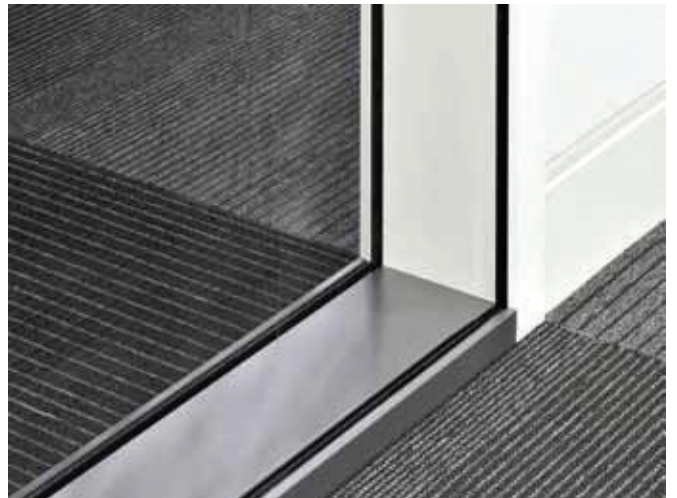
Features and Benefits

System 8000 drywall integration can be uniquely designed to the user's specification requirements.

- Available with recessed head and wall tracks for plasterboard applications
- Designed to work with varying drywall and glass widths
- Seamless integration with MFE Glass Partitioning Drywall +
- Designed to integrate with MFE Glass Partitioning Metal Ceiling Systems including Alugrid-Q and Omega C-profiles

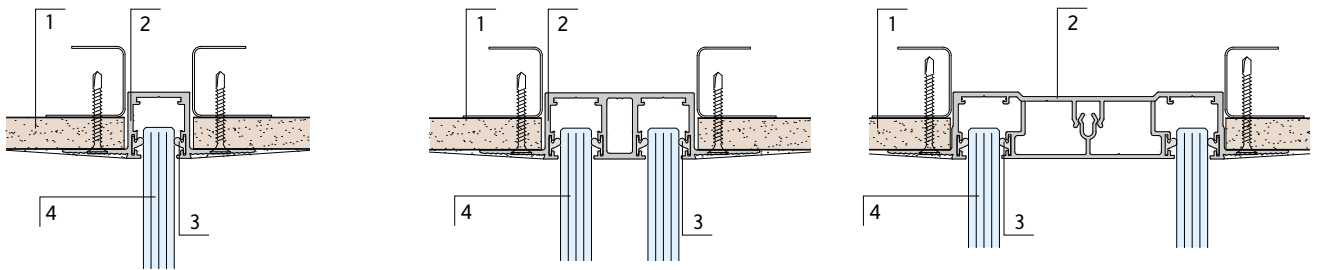
Acoustic and Fire Performance

The glass can be specified to meet optimum performance levels..



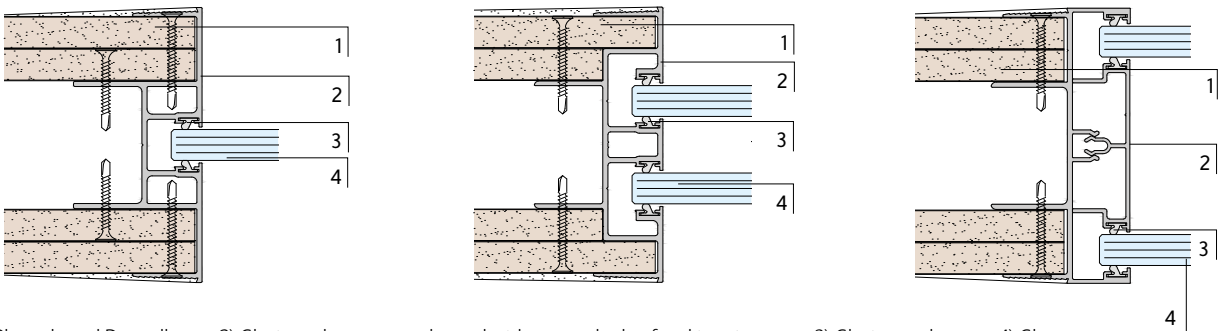
Drywall integration summary

System 8000 Plasterboard (MF Ceiling) Integration



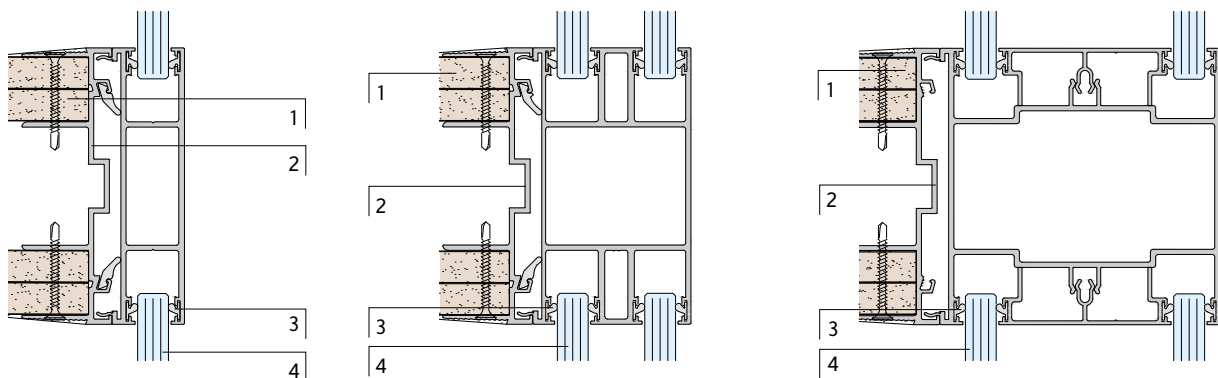
- 1) Plasterboard 2) Recessed head channel with tapered edge for skimming 3) Glazing seal 4) Glass

System 8000 in line Drywall Integration



- 1) Plasterboard Drywall 2) Glazing adaptor post channel with tapered edge for skimming 3) Glazing seal 4) Glass

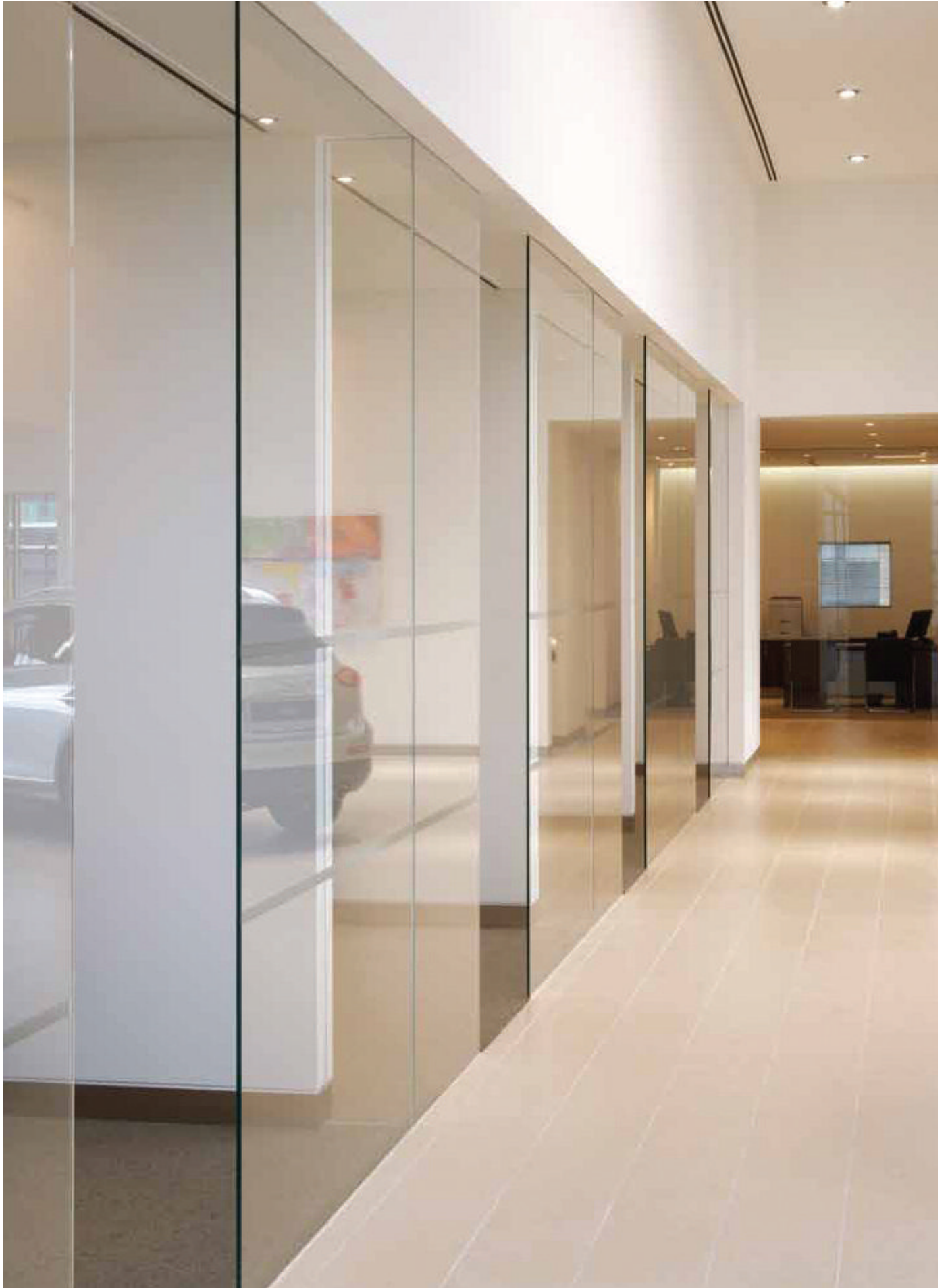
System 8000 3-way Drywall Integration



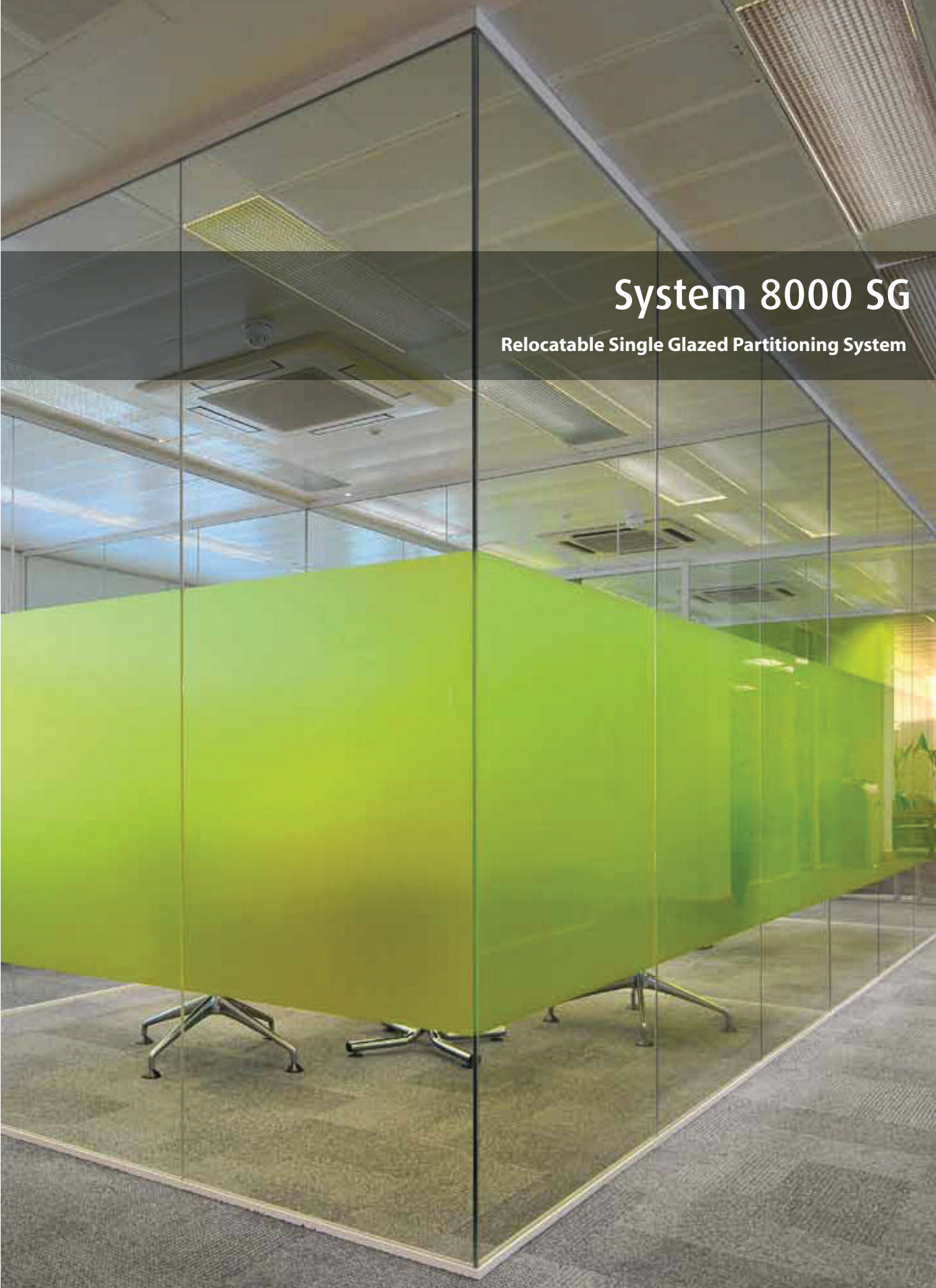
- 1) Plasterboard / Drywall 2) 3-way adaptor post with tapered edge for skimming 3) Glazing seal 4) Glass

System 8000 integrates with 100mm and 125mm MFE Glass Partitioning Drywall +









System 8000 SG

Relocatable Single Glazed Partitioning System

System 8000 SG overview

Drywall Description

System 8000 SG is a single glazed partitioning system that can incorporate differing thicknesses and glass types to meet project criteria.

System 8000 SG offers an aesthetically modern design, either as full glass partitioning system or integrated with drywall, to provide a mixture of drywall and glass.

System Benefits

- Acoustic performance options up to 37dB
- Overall width of standard head and base track 24mm
- Fire performance options up to FD60/60 (integrity and insulation)
- Choice of glass joints including our revolutionary C-Joint
- Provides up to ± 25 mm of deflection, using a 2-part deflection head
- Provides a seamless integration into drywall, to create a part glazed, part drywall partitioning system
- Integrates with MFE Glass Partitioning Metal Ceiling Systems
- Fully relocatable
- Offers a variety of head and base tracks to meet specification demands

Finish

System 8000 is finished with a polyester powder coating. Standard colours include RAL 9010 and RAL 9006, but can also be specified in over 200 RAL Colours.

Glass Options

A range of glass in nominal thicknesses, from 10mm to 22mm, is available including:

- Toughened
- Laminated
- Toughened and laminated
- Fire Rated
- Acoustic
- Electric privacy glass

Door Integration

Our single glazed system provides a range of standard and full height door options including:

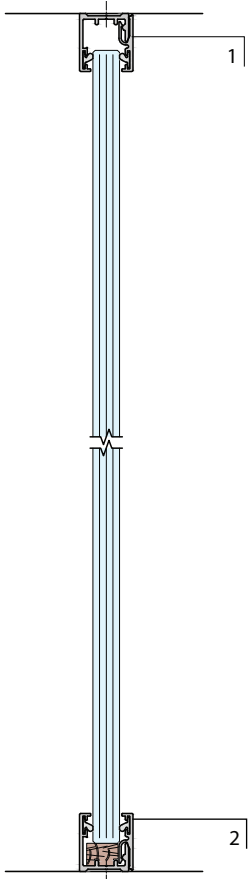
- Frameless glass doors
- Framed glass doors
- Sliding glass doors
- Flushed glazed doors
- Wood flush doors

Further information on door integration can be found on page 29.

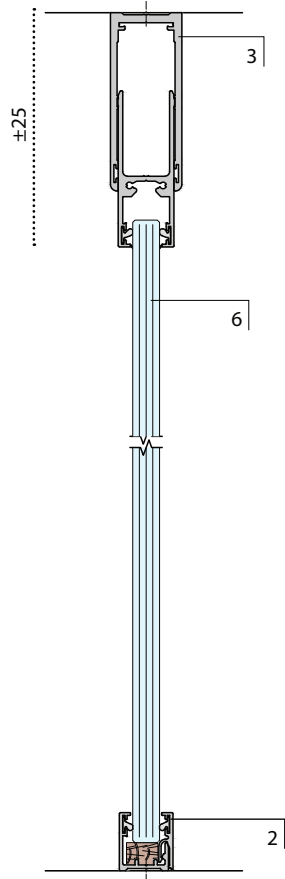


System 8000 SG technical summary

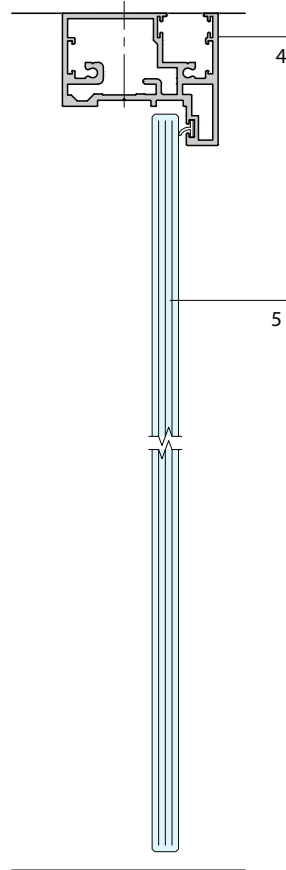
Head and base track



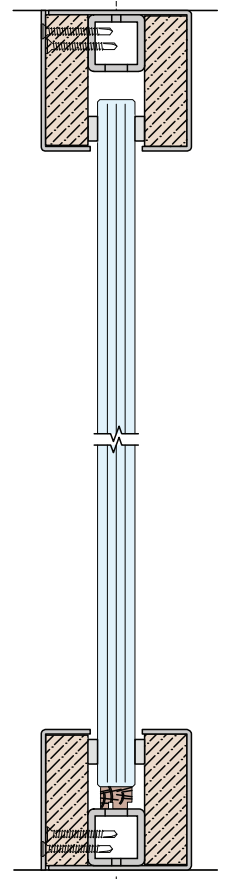
Head and base track
± 25mm deflection



Full height glass door



Head and base track
with 30/30 & 60/60
fire rating



- 1) Two part single glazed head channel to suit 10–12mm glass
- 2) Two-part single glazed base channel to suit 10–12mm glass
- 3) Two part single glazed deflection head channel providing ± 25 mm deflection to suit 10–12mm glass
- 4) Slimline door frame
- 5) Hinged or pivoted glass door
- 6) Glass

Performance Summary

	Deflection	Acoustic Performance	Fire Performance	Structural Performance
System 8000 SG	 up to ± 25	up to 37dB	up to 60/60	up to 'severe' duty

MFE Glass Partitioning are able to offer fire performance partitioning up to FD 60/60 (60 minute integrity and 60 minute insulation). A range of construction materials and builds can provide different fire performance levels, including 30/0, 30/30, 60/0, 60/30 and 60/60. The information and sections shown within this brochure are indicative of standard non-performance systems and all glass measurements are nominal. A further range of sections manufactured from timber and steel is available, depending on performance requirements. For further information, please contact a member of the technical team.

System 8000 SG deflection and integration

System 8000 SG Integration

System 8000 has been designed to integrate with MFE Glass Partitioning Metal Ceiling Systems and plasterboard applications including drywall and MF ceilings.

Metal Ceiling Integration

The integration of metal ceilings is enhanced by a wide selection of head tracks that provide varying degrees of deflection to suit specification requirements. Head tracks are designed to ensure no damage to the ceiling tiles and grid occurs. This prevents long-term dilapidation and refurbishment costs to clients and tenants.

Plasterboard / MF Ceiling Integration

System 8000 offers different options for plasterboard ceiling integration. A recessed head track provides a minimalistic design detail and with a tapered edge, provides a flush finish with plasterboard.

Drywall Integration

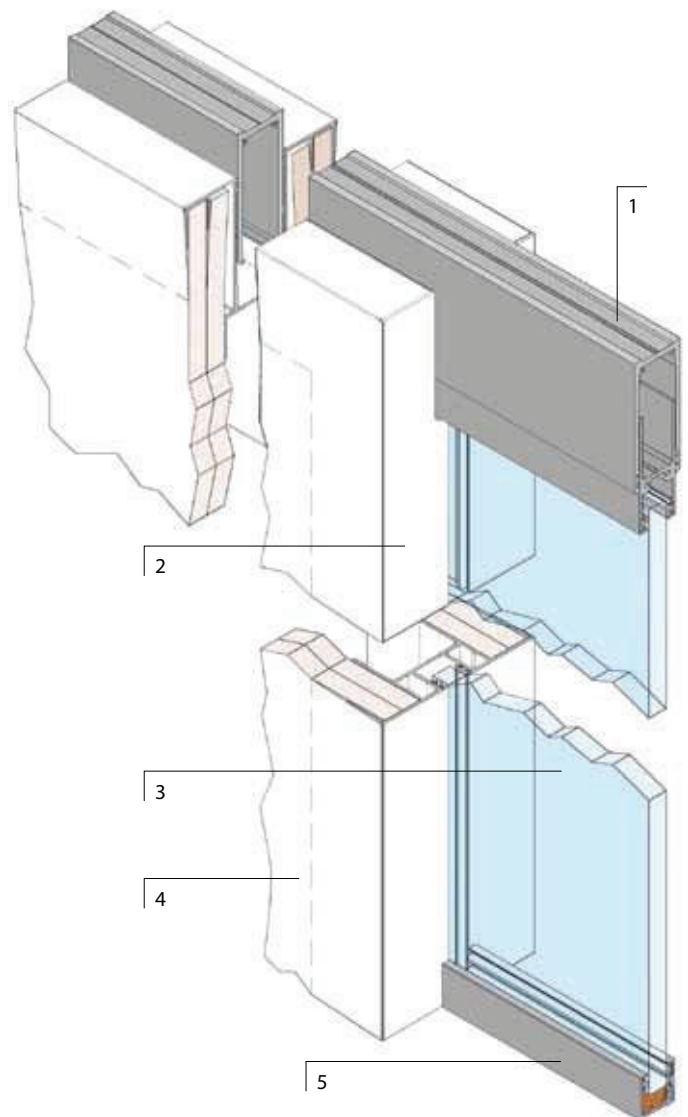
A key feature to System 8000 is the seamless integration from glass to solid, where the glass is recessed into drywall and MFE Glass Partitioning Drywall + to allow for innovative design layouts.

System 8000 SG Deflection

In most new building projects dead and live loads can cause significant movement in some long-span floor systems.


The single glazed system is designed to allow for a range of deflection criteria, offering a $\pm 15\text{mm}$ deflection using a single-part head track or $\pm 25\text{mm}$ using a two-part head track. The system can also be designed to provide greater levels of deflection where required.

System 8000 SG deflection detail incorporates a two part deflection head designed around an outer and inner deflection channel.



- 1) Two part single glazed deflection head channel with $\pm 25\text{mm}$ deflection to suit 10 and 12mm glass
- 2) Glass and Drywall adaptor post
- 3) Glass
- 4) Drywall / AJS Glass Interiors Drywall
- 5) Base track for single glazed to suit 10 and 12mm glass





System 8000 SG

58mm Relocatable Double Glazed Partitioning System

System 8000 NG overview

System Description

System 8000 NG is a 58mm double glazed partitioning system that can incorporate various thicknesses and glass types to meet specification criteria.

System 8000 NG offers an aesthetically modern design, either as full glass partitioning system or integrated with drywall, to provide a mixture of drywall and glass.

System Benefits

- Acoustic performance options up to 45dB
- Fire performance options up to 60/60 (integrity and insulation)
- Choice of glass joints including our revolutionary C-Joint
- Deflection head allowing for $\pm 25\text{mm}$ movement and can also be specified for greater deflection
- A full range of manifestation options
- Overall width of head and base track 58mm
- Provides a seamless integration into drywall, to create a part glazed, part drywall partitioning system
- Integrates with MFE Glass Partitioning Metal Ceiling Systems
- Fully relocatable
- Offers a variety of head and base tracks to meet specification demands

Finish

System 8000 is finished with a polyester powder coating. Standard colours include RAL 9010 and RAL 9006, but can also be specified in over 200 RAL Colours.

Glass Options

A range of glass in nominal thicknesses, from 10mm to 12mm, is available including:

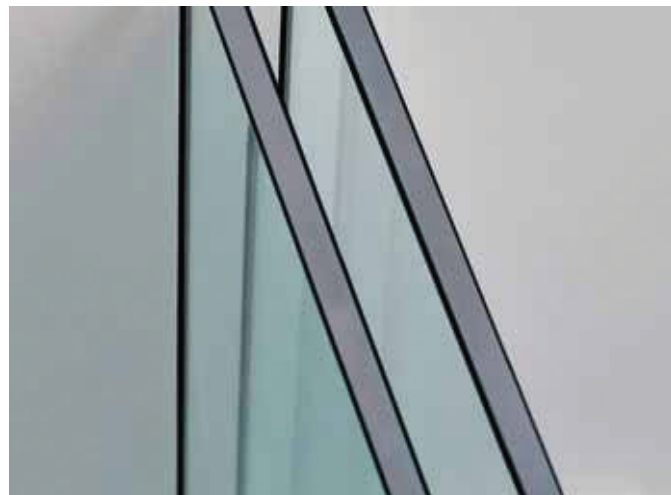
- Toughened
- Laminated
- Toughened and laminated
- Fire rated
- Acoustic
- Electric privacy glass

Door Integration

Our 58mm Double Glazed system provides a range of standard and full height door options including:

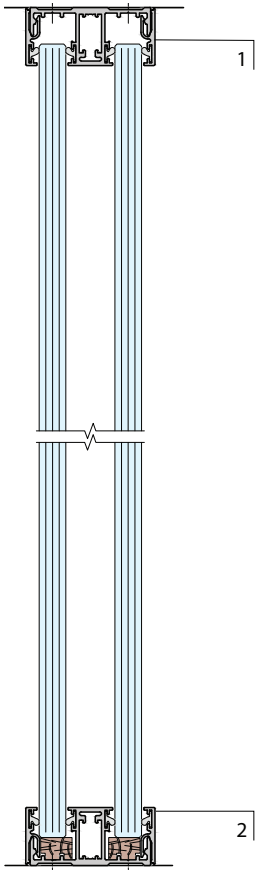
- Frameless glass doors
- Framed glass doors
- Sliding glass doors
- Flush glazed doors
- Wood flush doors

Further information on door integration can be found on page 29.

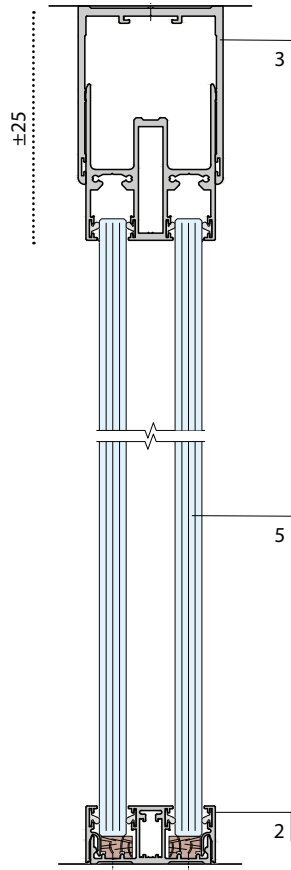


System 8000 NG technical summary

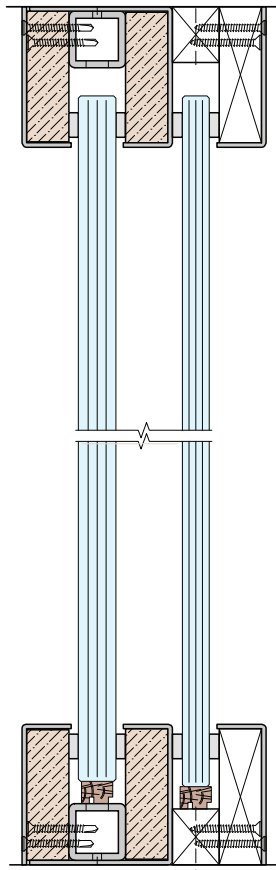
Standard 2-part
Head and base track



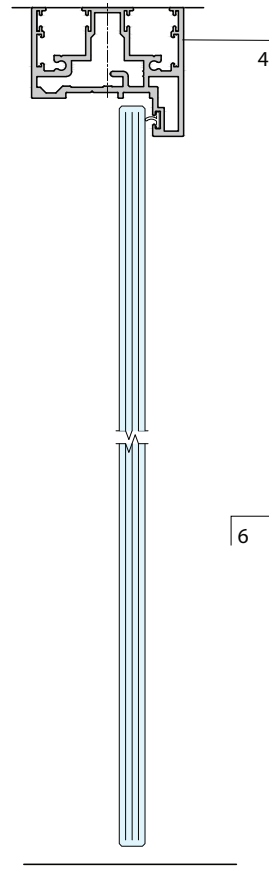
Head and base track
± 25mm deflection



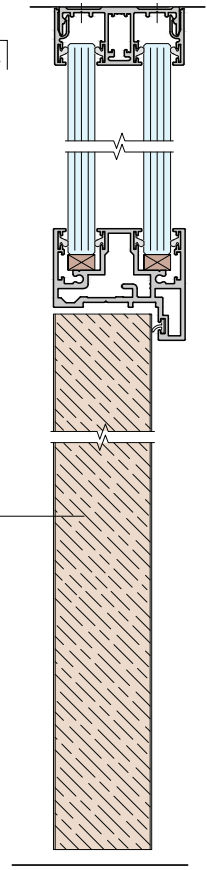
Head and base track
with 60/60 fire rating



Full height
Glass door



Halo door frame
with timber door



- 1) Two part 58mm double glazed head channel to suit 10–12mm glass
- 2) Two-part 58mm double glazed base channel to suit 10–12mm glass
- 3) Two part deflection head channel with ± 25 mm deflection suit 10–12mm glass
- 4) Slimline door frame
- 5) Glass
- 6) Timber door

Performance Summary

	Deflection	Acoustic Performance	Fire Performance	Structural Performance
System 8000 NG	 up to ± 25	up to 45dB	up to 60/60	up to 'severe' duty

MFE Glass Partitioning are able to offer fire performance partitioning up to FD 60/60 (60 minute integrity and 60 minute insulation). A range of construction materials and builds can provide different fire performance levels, including 30/0, 30/30, 60/0, 60/30 and 60/60. The information and sections shown within this brochure are indicative of standard non-performance systems and all glass measurements are nominal. A further range of sections manufactured from timber and steel is available, depending on performance requirements. For further information, please contact a member of the technical team.

System 8000 NG deflection and integration

System 8000 NG Integration

System 8000 has been designed to integrate with MFE Glass Partitioning Metal Ceiling Systems and plasterboard applications including drywall and MF ceilings.

Metal Ceiling Integration

Integration to metal ceilings is enhanced by a wide selection of head tracks that provide varying degrees of deflection to suit specification requirements. Head tracks are designed to ensure no damage to the ceiling tiles and grid occurs. This reduces the long-term dilapidation and refurbishment costs to clients and tenants.

Plasterboard / MF Ceiling Integration

System 8000 offers different options for plasterboard ceiling integration. A recessed head track provides a minimalistic design detail and with a tapered edge, provides a flush finish with plasterboard.

Drywall Integration

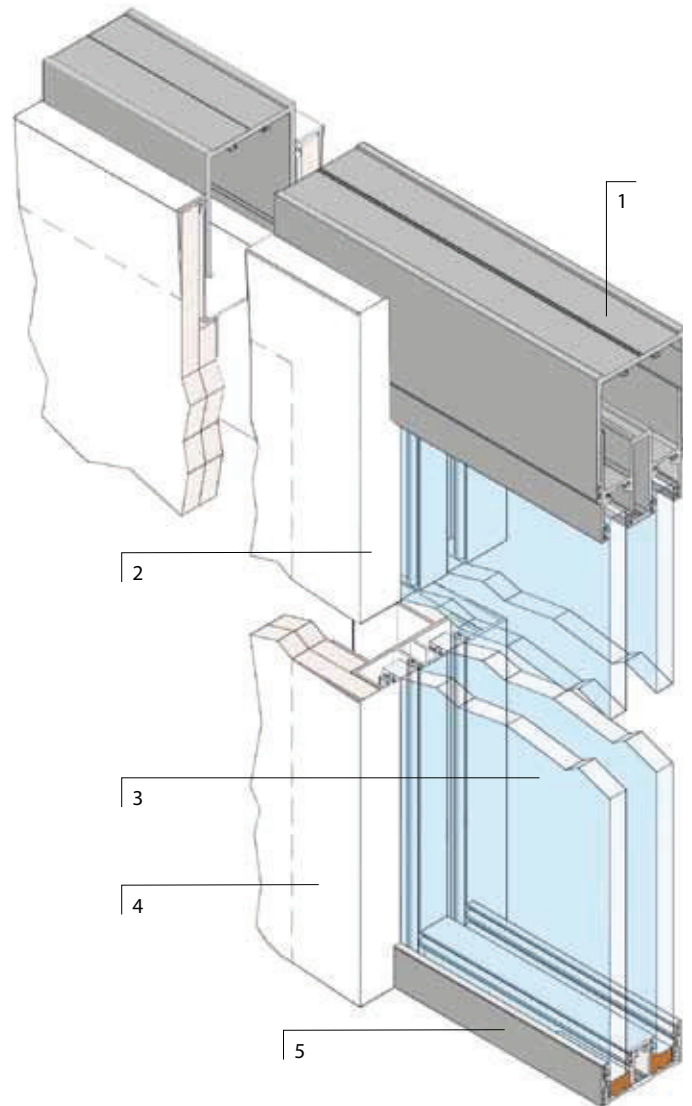
A key feature to System 8000 is the seamless integration from glass to solid, where the glass is fixed and recessed into drywall and MFE Glass Partitioning Drywall + to allow for innovative design layouts.

System 8000 NG Ceiling Deflection

In most new building projects dead and live loads can cause significant movement in some long-span floor systems.

The system is designed to allow for a range of deflection criteria, offering a $\pm 15\text{mm}$ deflection using a single-part head track or $\pm 25\text{mm}$ using a two-part head track. The system can also be designed to provide greater levels of deflection where required.

System 8000 NG deflection detail incorporates a two part deflection head designed around an outer and inner deflection channel.



- 1) Two-part 58mm Double Glazed deflection head channel with $\pm 25\text{mm}$ deflection to suit 10 and 12mm glass
- 2) Glass and drywall adaptor post
- 3) Glass
- 4) Drywall / AJS Glass Interiors Drywall
- 5) Base track for 58mm Double Glazed to suit 10 and 12mm glass





System 8000 DG

105mm Relocatable Double Glazed Partitioning System

System 8000 DG overview

System Description

System 8000 DG is a 105mm double glazed partitioning system that can incorporate differing thicknesses and glass types to meet project criteria.

System 8000 DG offers an aesthetically modern design, either as full glass partitioning system or integrated with drywall, to provide a mixture of drywall and glass.

System Benefits

- Acoustic performance options up to 47dB
- Fire performance options up to FD60/60 (integrity and insulation)
- Choice of glass joints including our revolutionary C-Joint
- Overall width of head and base track 105mm
- Provides a seamless integration into drywall, to create a part glazed, part drywall partitioning system
- Integrates with MFE Glass Partitioning Metal Ceiling Systems
- Fully relocatable
- Offers a variety of head and base tracks to meet specification demands
- Integral blinds and manifestation options available

Finish

System 8000 is finished with a polyester powder coating. Standard colours include RAL 9010 and RAL 9001, but can also be specified in over 200 RAL Colours.

Glass Options

A range of glass types from 10mm and 22mm is available, including:

- Toughened
- Laminated
- Toughened and laminated
- Fire Rated
- Acoustic
- Electric privacy glass

Door Integration

Our Double Glazed system provides a range of standard and full height door options, including:

- Frameless glass doors
- Framed glass doors
- Sliding glass doors
- Flush glazed doors

Further information on door integration can be found on page 29.



System 8000 DG technical summary

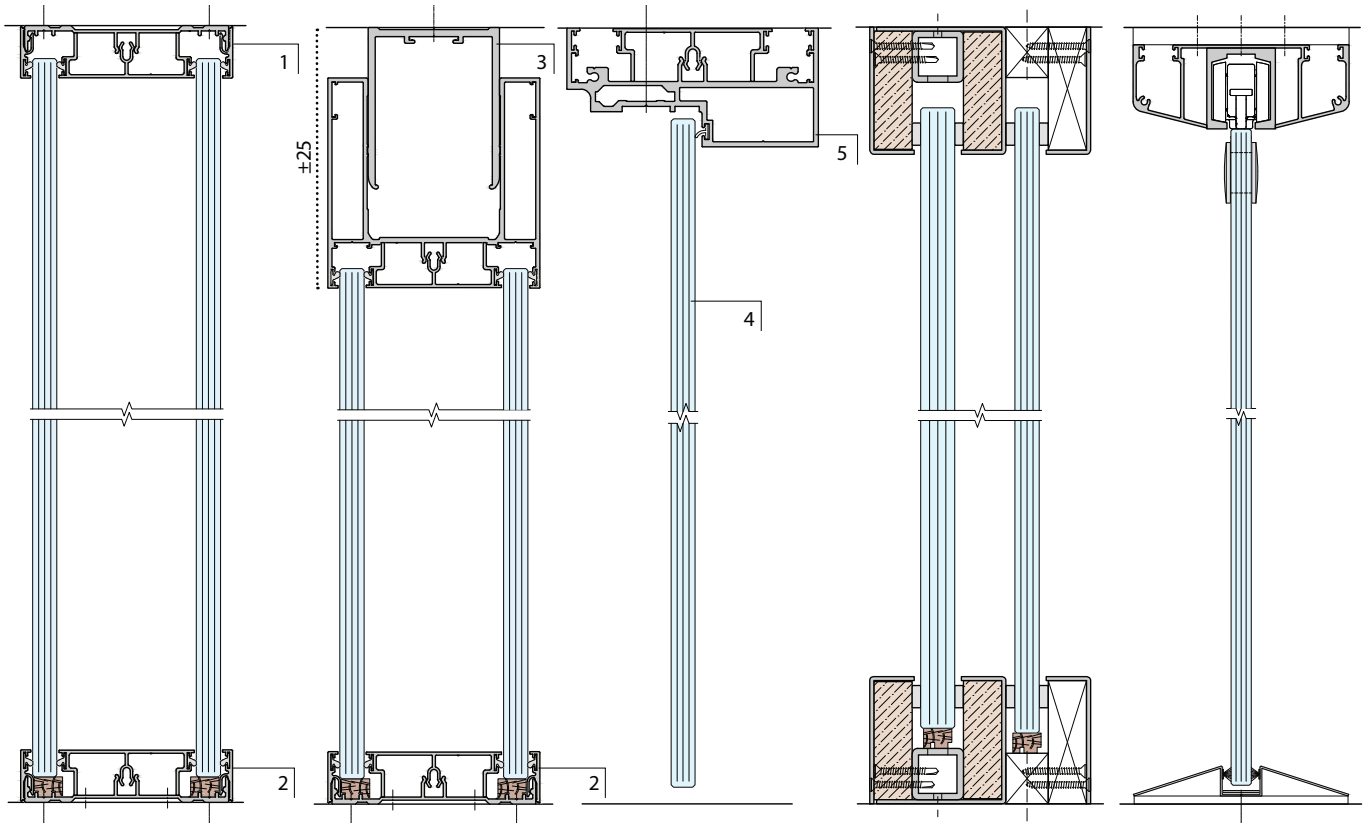
Standard 2-part head and base track

Head and base track ± 25 mm deflection

Full height glass door

Head and base track with 60/60 fire rating

Eclipse pocket sliding door



- 1) Two-part 105mm double glazed head channel to suit 10–22mm glass
- 2) Two-part 105mm double glazed base channel to suit 10–22mm glass
- 3) Two part deflection head channel providing ± 25 mm deflection to suit 10–22mm glass
- 4) Hinged or pivoted glass door
- 5) Slimline door frame

Performance Summary

	Deflection	Acoustic Performance	Fire Performance	Structural Performance
System 8000 DG	<p>up to ± 25</p>	up to 47dB	up to 60/60	up to 'severe' duty

MFE Glass Partitioning are able to offer fire performance partitioning up to FD 60/60 (60 minute integrity and 60 minute insulation). A range of construction materials and builds can provide different fire performance levels, including 30/0, 30/30, 60/0, 60/30 and 60/60. The information and sections shown within this brochure are indicative of standard non-performance systems and all glass measurements are nominal. A further range of sections manufactured from timber and steel is available, depending on performance requirements. For further information, please contact a member of the technical team.

System 8000 DG deflection and integration

System 8000 DG Integration

System 8000 has been designed to integrate with MFE Glass Partitioning Metal Ceiling Systems and plasterboard applications, including drywall and MF ceilings.

Metal Ceiling Integration

The integration to metal ceilings is enhanced by a wide selection of head tracks that provide varying degrees of deflection to suit specification requirements. Head tracks are designed to ensure no damage to the ceiling tiles and grid occurs. This prevents long-term dilapidation and refurbishment costs to clients and tenants.

Plasterboard / MF Ceiling Integration

System 8000 offers different options for plasterboard ceiling integration. A recessed head track provides a minimalistic design detail and with a tapered edge, provides a flush finish with plasterboard.

Drywall Integration

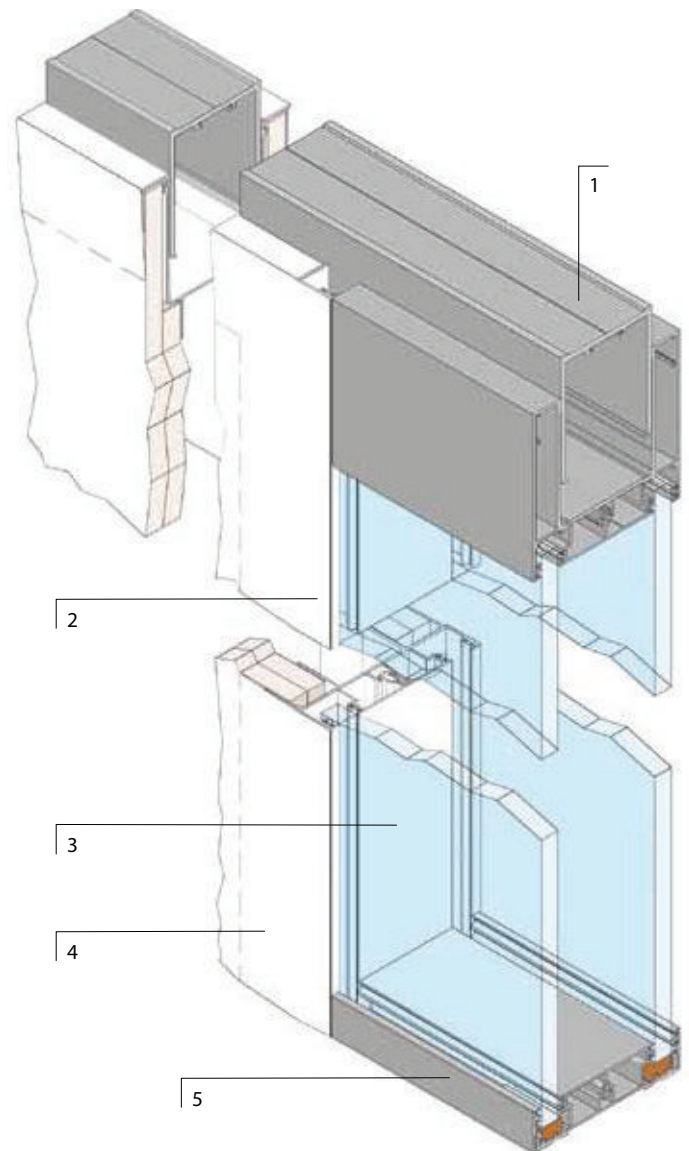
A key feature to System 8000 is the seamless integration from glass to solid, where the glass is fixed and recessed into drywall and MFE Glass Partitioning Drywall + to allow for innovative design layouts.

System 8000 DG Ceiling Deflection

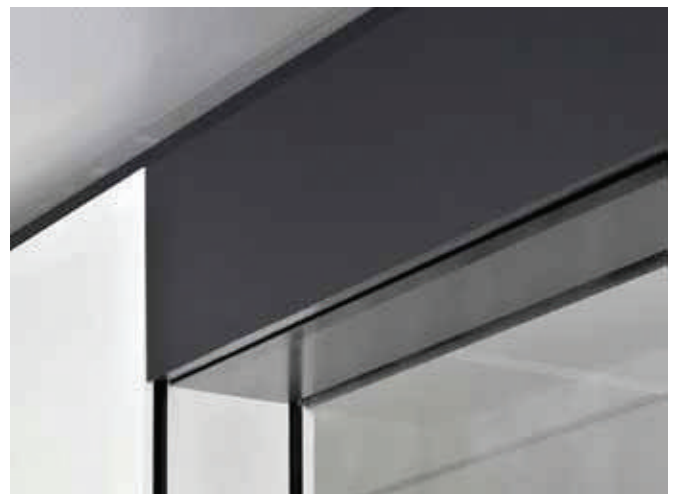
In most new building projects dead and live loads can cause significant movement in some long-span floor systems.

The Double Glazed system is designed to allow for a range of deflection criteria, offering $\pm 15\text{mm}$ deflection using a single-part head track or $\pm 25\text{mm}$ using a two-part head track. The system can also be designed to provide greater levels of deflection where required.

System 8000 Double Glazed deflection detail incorporates a two-part deflection head designed around an outer and inner deflection channel.



- 1) Two-part Double Glazed deflection head channel with $\pm 25\text{mm}$ deflection to suit 10 and 22mm glass
- 2) Glass and drywall adaptor post
- 3) Glass
- 4) Drywall / AJS Glass Interiors Drywall
- 5) Base track for Double Glazed to suit 10 and 22mm glass





Glazing joints

Innovative C-Joint between glass

System 8000 glass joints

Silicone

Traditionally fully glazed systems have used silicone for the glass jointing method. Silicone provides a clean aesthetic finish to glass joints but requires a clean site, to avoid dust settling during the 24 hour curing period. Post installation, to remove a glass pane, to maintain blinds or to relocate the system, any silicone needs to be cut away and time allowed to clean the glass edge.

C-Joint (Concealed Dry Glass Joint)

The innovative C-Joint is a near invisible dry joint that is sandwiched neatly between two profiled glass panels. As a solid extrusion it provides a consistent 1.5mm compression joint between glass modules, to create the appearance of butt-jointed glass, without the use of silicone. The C-Joint can also be used horizontally and vertically.

Saving time on site, it is installed progressively at the same time as the glass. The additional benefit over silicone is that the joints can be utilised with double glazed installations.

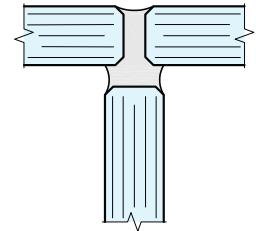
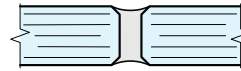
Meeting the requirements for strength and stability, the C-Joint ensures the visual demands of a traditional glass partitioning joint are met, while also fulfilling the demands of a fully relocatable partitioning system. The flexibility of this dry joint allows future office changes to be completed quickly and easily without the need to cut away silicone.

H-Joint (Dry Joint, Clear PET-G)

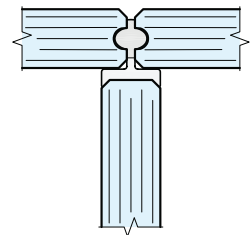
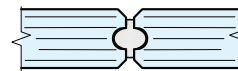
The crystal clear H-Joint is a low profile dry joint which can be used instead of traditional silicone.

The PET-G joint is recyclable and offers the lowest carbon footprint, in comparison to other plastics. For fire performance systems, up to 60/60 at 3m high, an opaque joint is utilised.

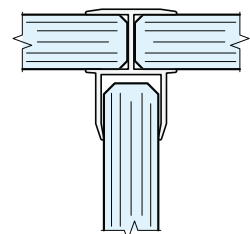
Silicone

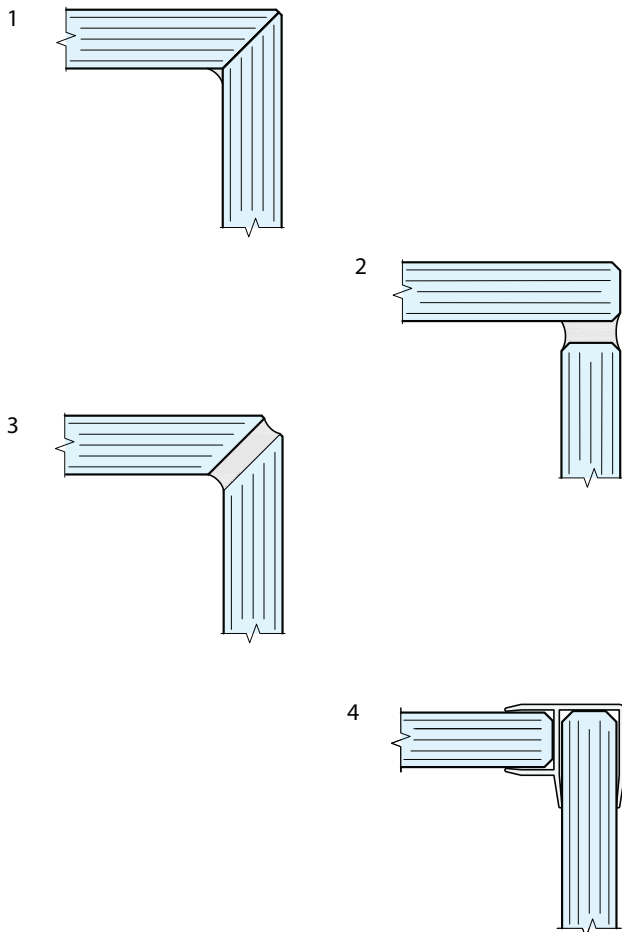


C-Joint (Concealed Dry Glass Joint)



H-Joint (Dry Joint, Clear PET-G)





Corner Joints

A number of different options are available for jointing 90° corners:

1. Minimal joint – mitred glass is joined, using a thin bead of silicone to give the appearance of butt-jointed glass
2. Silicone – glass can be jointed at 90°, to provide a clean end of line finish
3. Silicone – a bead of silicone can be applied between mitred glass
4. H-Joint Corner section – a low profile clear dry joint which is designed to work with the H-Joint

We would recommend that a silicone or taped joint is used where corner joints are less than or greater than 90°. For acute angles of less than 70° we would recommend that the glass edges are mitred.

Glass Installation

To provide the system's high standards, our own dedicated glass team install all glass for System 8000.

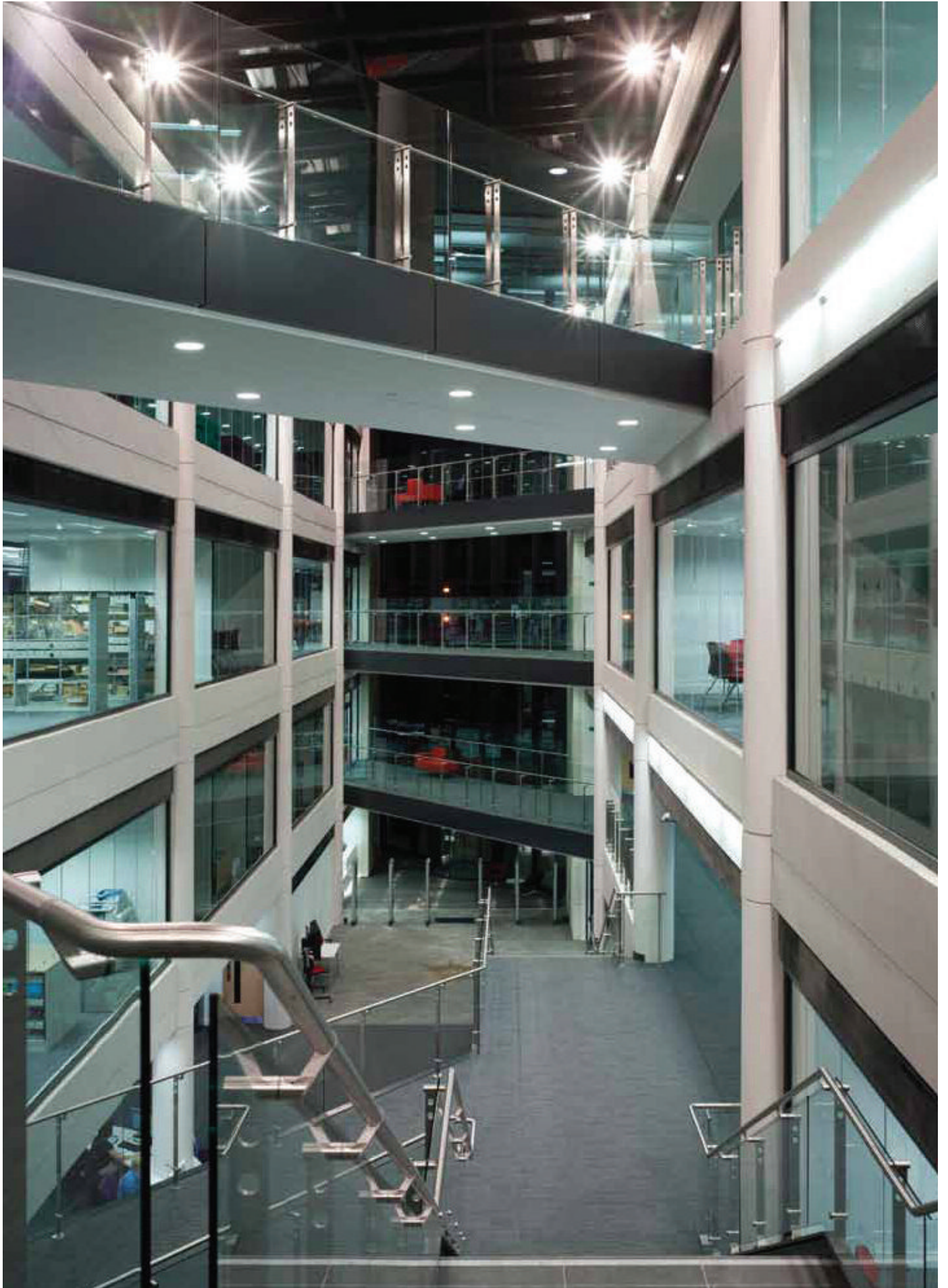
Once System 8000 aluminium head and base tracks are fitted on-site, a glass surveyor visits the project and ensures accurate measurements are taken for both glass and any integral blinds.

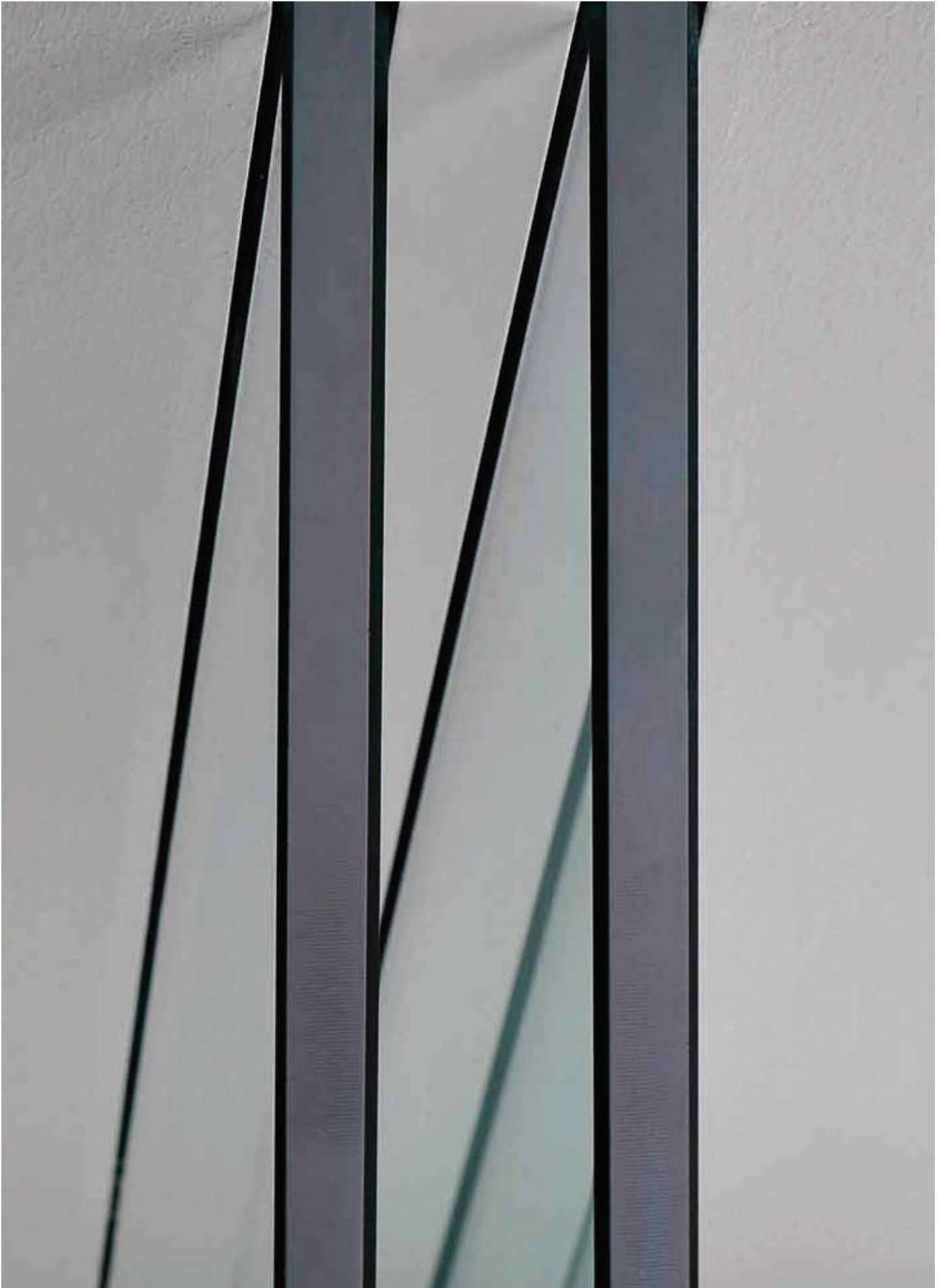
Standard glass (toughened / laminated) is installed within 5 working days. Fire glass / specialist glass can take up to 4 weeks, subject to specification.

The glass team are also able to offer a range of bespoke glass services, to meet project requirements.











Door integration

Saudi Armaco, Centre Point, London

Door integration

Manifestations

System 8000 offers specifiers a wide range of integrating door options to meet varying aesthetic and specification criteria.

A range of aluminium, steel and timber door frames is available including a reduced height aluminium door channel. For further details please refer to our technical manual or contact a member of our technical team.

A comprehensive range of framed and frameless single and double leaf doors is available to integrate with System 8000 including:

Framed Glass Doors

Available in a range of aluminium and natural wood door frames, manufactured in full height or with glass over panels. Single and double leaf door frames are available to suit Single Glazed, 58mm Double Glazed and 105mm Double Glazed installations and are available as:

- Hinged – supplied with patch hinges
- Pivoted – supplied with offset pivots

Performance glass doors, up to FD60/60 (60 minutes integrity and insulation), can be supplied either full height or with overpanels.

Drop door seals are available to enhance acoustic performance. The innovative new drop door seal on a glass partitioning door will significantly increase sound attenuation from 23dB to 32dB, resulting in a significant reduction of unwanted noise.

Frameless Glass Doors

System 8000 can also be specified with frameless glass doors, either single or double leaf doors are available to suit Single Glazed, 58mm Double Glazed and 105mm Double Glazed installations and can be supplied as:

- Hinged – supplied with patch hinges
- Pivoted – supplied with pivots

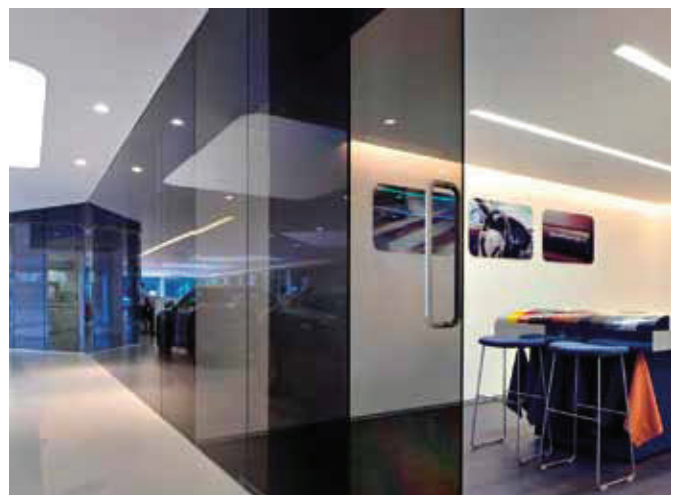
Sliding Glass Doors

A range of sliding glass doors is available and can be installed either supported on surface mounted ironmongery or by top track supported rollers. For double glazed installations, the sliding glass door frame enables the door to open within the glass cavity.

Flush Double Glazed Doors

Complementing the system, flush double glazed doors are manufactured by MFE Glass Partitioning using a sandwich construction of 6mm glass either side of an aluminium frame, providing a finished overall thickness of 45mm.

Flush glazed doors are hung on offset pivots and floor springs, and can also be fitted with pull handles, locks and latches.





Wood Flush Doors

MFE Glass Partitioning International offers a range of architectural specification grade doors of up to 3000 x 1200mm and can be specified fully finished with a 3-coat UV stable clear lacquer, which is applied during manufacture. This enhances the natural features of the veneer.

MFE Glass Partitioning also offers a wide range of door facings, including FSC / PEFC approved natural wood veneers, CPLs (Continuous Pressure Laminate), paint grade veneers and high pressure laminates.

MFE Glass Partitioning wood flush doors with reduced head door frames can offer a further design aesthetic. Rebated wood flush doors are also available, which allow the door face to sit flush with the glass.



Door Specification standard vision panels to comply with Approved Document M

- Fitting automatic threshold seals
- Pre-mortising for locks and hinges
- Full compliance with DDA regulations
- Range of speciality veneer species and cuts
- Range of veneers with inlays
- Range of laminate finishes, including Formica

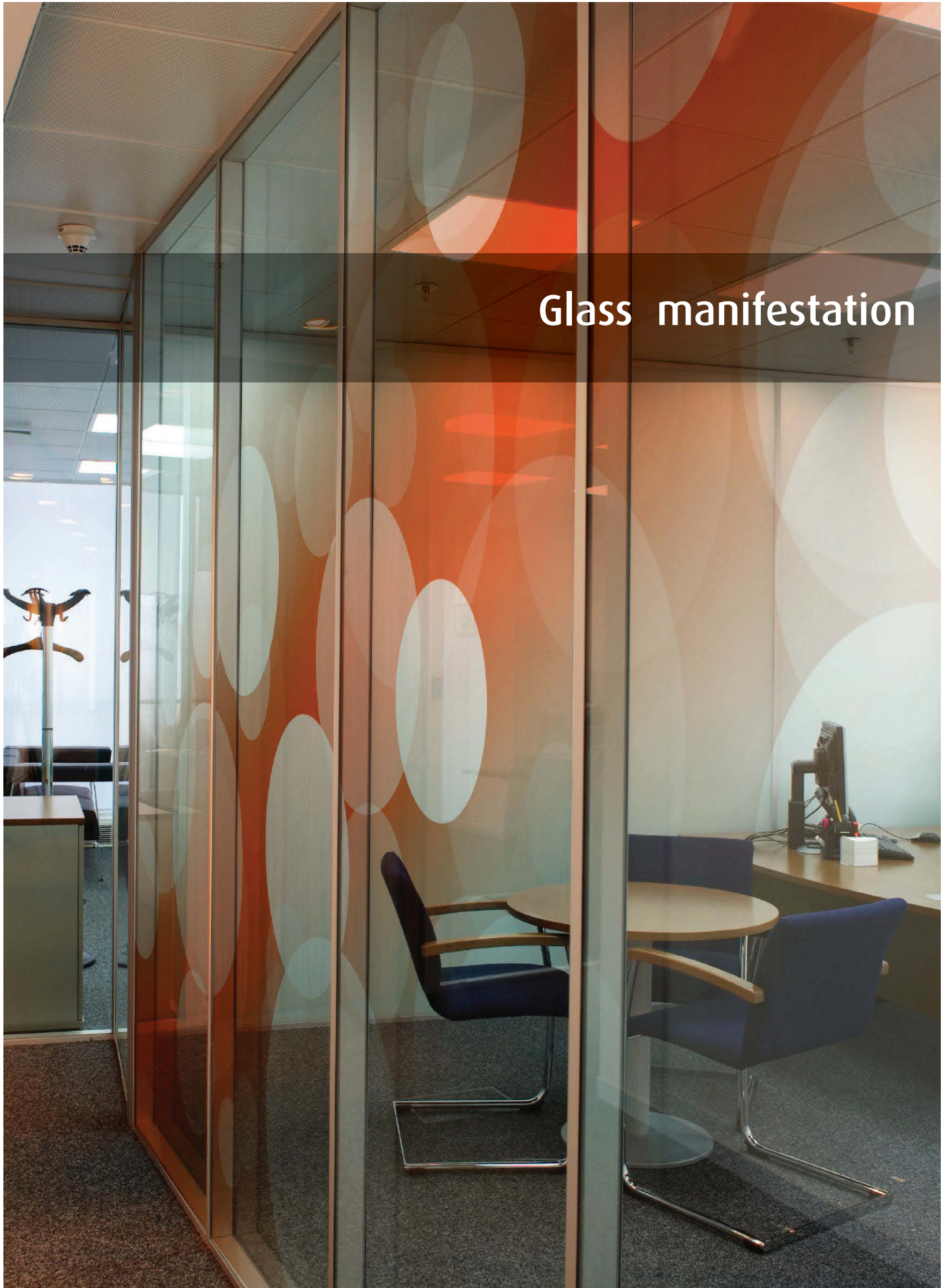
Fire Resistance for Wood Flush Doors

Doors are available as non fire rated or 30 minutes fire rated.

Acoustic Performance for Wood Flush Doors

Acoustic attenuation can be achieved to meet the requirements of Approved Document E of the Building Regulations 2003. A sound reduction index of up to Rw 33dB can be achieved.





Glass manifestation



Manifestations

DDA (Disability Discrimination Act) / Approved Document M sets out minimum requirements for glass manifestations.

Manifestations must be clearly defined at two levels 850–1000mm and 1400mm–1600mm. They must contrast with the background in all lighting conditions.

The manifestations can take a number of forms; a single logo 150mm high repeated on each glass panel or 50mm high decorative bands. The manifestations are not limited to the single band areas and can also be located anywhere on the partitioning, as long as the two areas are included.

Manifestations are typically installed on-site using a vinyl graphic. These specialist vinyl graphic products generically known as 'Manifestation Graphics' offer a flexible low cost alternative to the traditional acid etching or sand blasting of glass.

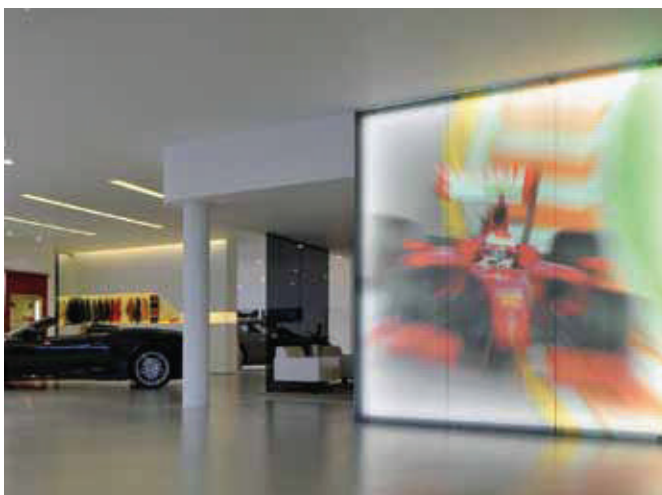


Manifestations can be installed on the face or the reverse of the glass. It is recommended that in some sectors, including education, the vinyl is installed on the reverse face / inside face of double glazing to ensure that the vinyl is protected against any accidental damage. For installations where a duty of care is evident, or environments where the manifestation may change, it is recommended to install the graphic on the outside face.

Blinds

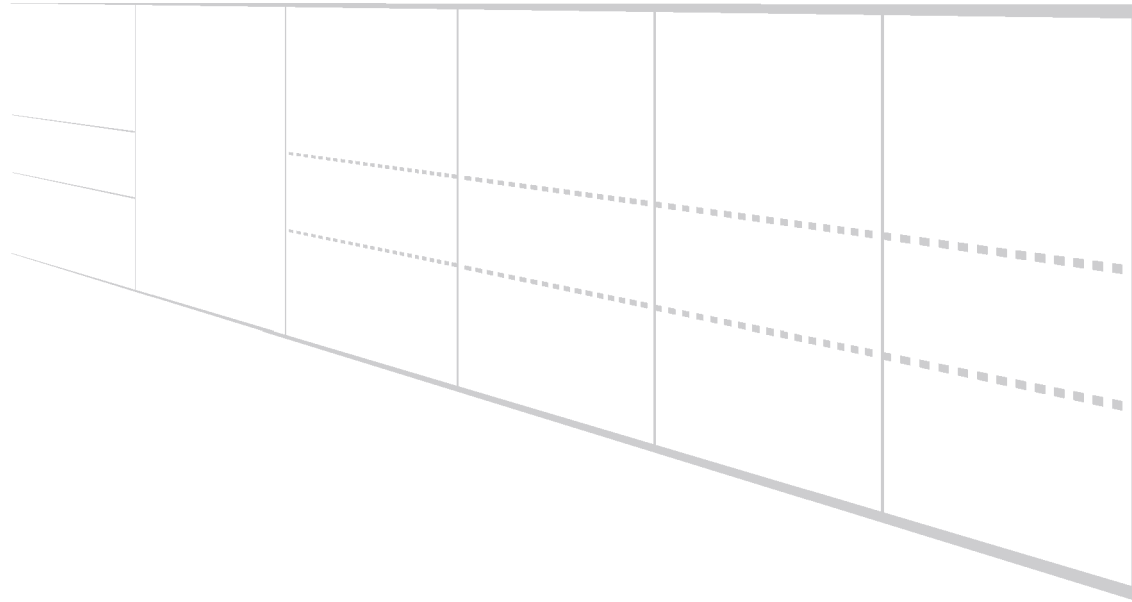
In lieu of manifestations and where specified, integral venetian blinds can be fitted within the double glazed system.

Blinds can offer high levels of privacy to meeting rooms and are either controlled by remote control or integrated into the building management system.



Privacy Glass

Privacy glass can allow total privacy or unobstructed viewing. In the scattering (opaque) state, privacy glass diffuses direct sunlight and eliminates 99% of the UV light transmission rays that can fade carpets and furniture. With the flick of a switch, the glass instantly changes from clear to obscure.



For more information please contact us on
01206 760111

info@glasspartitioning-mfe.co.uk
www.glasspartitioning-mfe.co.uk

