



C Frame Double Crank Power Presses - Model C2

Raybould Machine Tools Ltd

web: [www.raybould.com](http://www.raybould.com) e-mail: [slr@raybould.com](mailto:slr@raybould.com)

tel: 01384 565997

---

# THE BOXIN C2 RANGE



The Boxin C2 double crank range of presses feature a large bed and ram area to accommodate a wide variety of tools making this line of presses the perfect choice for a long list of applications

The C2 double crank range are a robust mono block construction power press with stress-relieved welded steel frames and a heavy duty drive gear that run in a self contained oil bath thus reducing wear. The crankshafts are manufactured from a forging, machined, ground and rated at 150% overload to provide a higher energy rating.

The C2 design is such that extra steel is built in the 'C' section of the frames to reduce angular deflection together with a cast slide body featuring 6 & 8-point full length machined guides providing outstanding position repeat-ability allowing for a longer tool life.

Counter-rotating double crankshafts direct the tonnage towards the centre of the slide and bolster to minimise side loading.

The OMPI Hi Torque low noise combination dry clutch & brake operates in conjunction with a Ross dual safety solenoid valve together with a Mitsubishi plc control, PILZ safety monitoring and user friendly touchscreen operator HMI.

With hydraulic overload protection, variable speed drive, automatic lubrication systems and a centralised maintenance centre built into the main operator panel, the C2 is a highly versatile and productive range of power presses.

---



# STANDARD FEATURES



CE Approved

Robust mono-block fabricated steel frame

Frames are stress relieved after welding

Drive gears run in self-contained oil bath

Forged & machined crankshafts are rated for 150% capacity

Counter-rotating double cranks direct the tonnage towards the centre of the slide and bolster

reducing side loads and improving tool life

Motorised slide adjustment with die height readout

Adjustable six & eight-point full length machined slide guides

T-Slotted bolster & slide for die clamping

Inverter variable speed drive

Ross DM Series dual safety solenoid valve

Hi Torque low noise OMPI combination dry clutch & brake (Wet clutch available as an option)

Mitsubishi PLC Control with HMI

PILZ safety monitoring

Rotary encoder with spare channels

Brake monitor

User friendly operator controls

Pendant or Floor mounted main operator panel

Additional Space in the MOP

Mobile T-Stand twin push button operator station

Automatic lubrication system

Hydraulic Overload Protection System (H.O.L.P.)

Air balanced slide

Adjustable safety die block electrically interlocked

Flywheel brake for quick stopping of the flywheel

allowing safe and quick entry to the tool area

Automatic lubrication system

Electrically monitored lubrication distribution blocks

Bijur automatic air-counter balance oiling system

Air ejector

Air receptacle

Air pressure switch monitored at control

Air counter balance cylinders for upper die weight

Pre-cut counter

Pre-set counter

Die light

Anti vibration press mounts

---

# BUILD QUALITY

**BUILT TO JIS1 STANDARD**



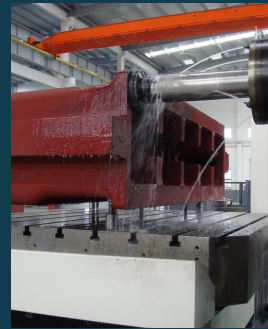
**MONOBLOCK  
FRAME**



**FORGED,  
MACHINED &  
GROUND  
CRANKSHAFT**



**HYDRAULIC  
OVERLOAD  
PROTECTION**



**IN-HOUSE  
MACHINING**

Every Boxin Press is built to meet or exceed JIS 1st Class standards. JIS 1st Class represents the most exacting and demanding industrial manufacturing standard in the world. Machines that meet these strict guidelines must pass a rigorous inspection with hundreds of designated benchmarks for materials and operation. The adherence to JIS 1st Class represents a commitment to building the best metal forming presses in the world; constantly seeking new ways in the development of ever higher standards of reliability and quality.

---

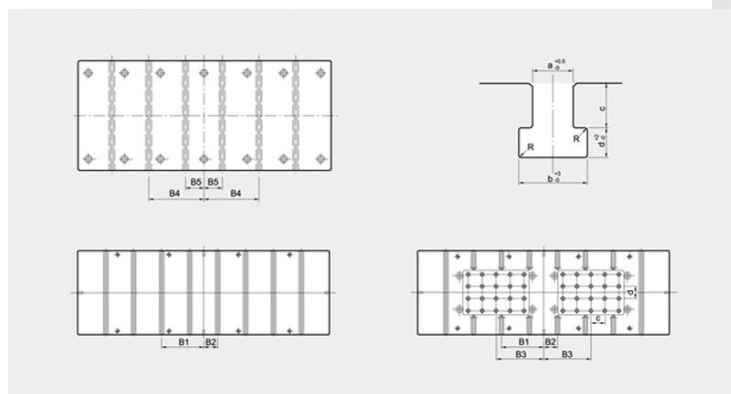


# C2 SPECIFICATION

AVAILABLE FROM 110 TO 250 TONS

C2-250

机种 Machine type		C2-110		C2-160		C2-200		C2-250	
型式 MODEL		V	H	V	H	V	H	V	H
公称压力 Capacity	tons	110		160		200		250	
能力发生点 Rated tonnage point	mm	5	3	6	3	6	3	7	3.5
行程长 Stroke Length	mm	180	110	200	130	250	150	280	170
行程数 Stroke Per Minute	S.P.M	35-65	50-100	30-55	40-85	25-45	35-70	20-35	30-60
最大模高 Die height(S.D.A.U)	mm	400		450		500		550 605	
滑块调整量 Slide adjustment	mm	100		100		120		120	
台盘面积 Bolster area(LR×FB)	mm	1800×650		2000×760		2400×840		2700×900	
台盘厚度 Bolster thickness	mm	130		150		170 185		170 185	
滑块板面积 Slide area(LR×FB)	mm	1400×500		1600×550		1850×650		2100×700	
滑块板厚度 Slide thickness	mm	70		70		95		95	
滑块板孔径 Hole of Slide	mm	Ø50×3×Pitch320		Ø50×3×Pitch350		Ø50×3×Pitch375		Ø50×3×Pitch450	
主马达 Main Motor	kw×P	7.5×4	7.5×4	11×4	11×4	15×4	15×4	18.5×4	18.5×4
滑块调整马达 Sliding adjusting motor	HP×P	1×4		1×4		2×4		2×4	
供给气压 The pressure of air supply	Kg/cm <sup>2</sup>	5~6		5~6		5~6		5~6	
精度 Precision		GB(JIS)1级		GB(JIS)1级		GB(JIS)1级		GB(JIS)1级	
重量 Weight	Tons	14.5		21.5		27		42	
外形尺寸 Outline dimension		2000×1745×3059		2200×1940×3709		2620×2235×3849		3000×2545×4304	
模垫形式 Die cushion model		双顶板双汽缸 2-Pad-2-Cylinder							
模垫能力 Die cushion capacity	Tons	3.6×2		6.3×2		10×2		14×2	
空气压力 Air pressure	Kg/cm <sup>2</sup>	6.5		7.2		6.75		9	
行程 Stroke Length	mm	70		70		80		100	
模垫顶板面积 The area of the top tray of die cushion		350×235×2组		410×260×2组		540×350×2组		640×470×2组	



机种 Machine Type	C2-110	C2-160	C2-200	C2-250	尺寸 dimension	A	B
滑块板面积(左右×前后) Slide area (left right × front rear)	1400×500	1600×550	1850×650	2100×700	a	22	28
T型槽形式 T Mould	A	A	B	B	b	37	48
T型槽条数 T-slots number	4	6	6	6	c	24	28
B4	375	375	375	450	d	16	20
B5	125	125	125	150	R	1	1

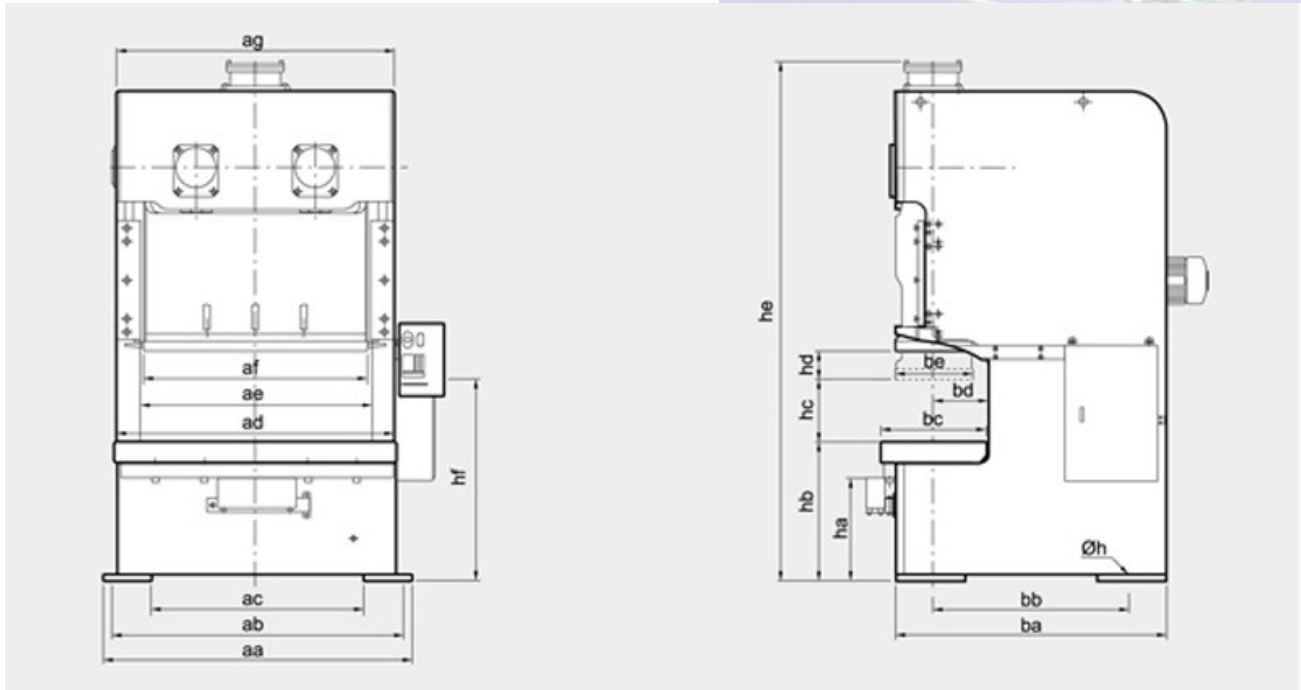
机种 Machine Type	C2-110	C2-160	C2-200	C2-250
台盘面积(左右×前后) Bolster area (left right × front rear)	1800×650	2000×760	2400×840	2700×900
T型槽形式 T Mould	A	A	B	B
T型槽条数 T-slots number	6	8	8	8
B1	375	375	375	450
B2	125	125	125	150
B3	255	415	455	510

图二 模垫销孔数目×孔径  
Fig.2 The number of the die cushion pin holes × Hole diameter

销孔间距 c×d Pitch of pin holes	75×100	75×75	100×100	100×100
-----------------------------	--------	-------	---------	---------

# DATA SHEETS

AVAILABLE FROM 110 TO 250 TONS



机种 Machine type	C2-110		C2-160		C2-200		C2-250	
型式 MODEL	V	H	V	H	V	H	V	H
aa	2000		2200		2620		3000	
ab	1900		2080		2460		2800	
ac	1360		1520		1820		2200	
ad	1800		2000		2400		2700	
ae	1510		1660		1990		2220	
af	1400		1600		1850		2100	
ag	1780		1980		2320		2590	
ba	1745		1940		2235		2545	
bb	1295		1380		1885		2195	
bc	650		760		840		900	
bd	330		385		425		455	
be	500		550		650		700	
ha	(630)		(730)		(790)		(820)	
hb	830	830	990	990	1070	1085	1100	1115
hc	400		450		500		550	
hd	180	110	200	130	250	150	280	170
he	3059		3709		3849		4304	
hf	1240		1440		1570		1680	
Øh	Ø35		Ø47		Ø54		Ø54	

---

# NINGBO BOXIN MACHINERY CO LTD



NingBo Boxin Presses offers a comprehensive range of mechanical presses from 10 tons to 1800 tons capacity:

- C Frame Open Fronted Single Crank Presses 10 to 340 tons
- Semi Closed H Frame Double Sided Presses 80 to 315 tons
- C Frame Open Fronted Double Crank Presses 110 to 250 tons
  - Straight Sided Single Crank Presses 200 to 600 tons
  - Straight Sided Double Crank Presses 110 to 600 tons
- Straight Sided Double Crank Power Presses 300 to 1800 tons
  - Straight Sided Eccentric Gear Presses 400 to 1800 tons

NingBo Boxin Machinery Co. Ltd is a Hong Kong owned enterprise specialised in the manufacture of high precision presses since 2006. Their manufacturing facility is located near the beautiful port of Beilun Ningbo, China

Boxin utilise the latest technology and advanced design and are a leading manufacturer and supplier of innovative, CE approved, high quality and cost effective power presses

---





# BOXIN PRESSES

Boxin build on average 100 presses per month ensuring a continual supply and machines on short delivery timescales.

In 2012 Boxin commenced cooperation with an established leading American power press manufacturer. This collaboration has assisted Boxin with numerous ideas regarding design, accuracy standards, quality and safety. With the support of the American manufacturer Boxin has achieved 40 patents which have led to exports to the areas of Europe and North America.

Some of their major customers are TOYOTA, PANASONIC, CHNT, MAZDA, AUX, GEELY, BYD and MIDEA.

Boxin strives to continually improve their range of machines with the latest concepts, service and world-class facilities for manufacturing the highest quality machines.

---

# ANY QUESTIONS?

TEL: 01384 565997

MAIL: [SLR@RAYBOULD.COM](mailto:SLR@RAYBOULD.COM)

RAYBOULD MACHINE TOOLS LTD  
MACARTHUR ROAD  
CRADLEY HEATH  
WEST MIDLANDS  
B64 7RP  
ENGLAND  
[WWW.RAYBOULD.COM](http://WWW.RAYBOULD.COM)

