

SWA-EE Series Aluminium Line Shafts

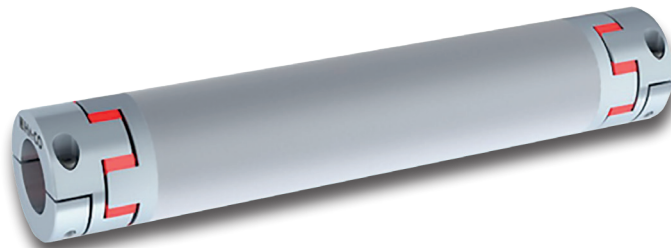
SWA-EE Series Characteristics

- Aluminium construction
- Very low mass inertia torque
- Backlash-free
- High torsional stiffness
- Equipped with two elastomer spiders
- Allows for large misalignment

Easy to mount
with divided
clamping hub



SWA-EE Series Aluminium Type With Double Ended Elastomer Connections

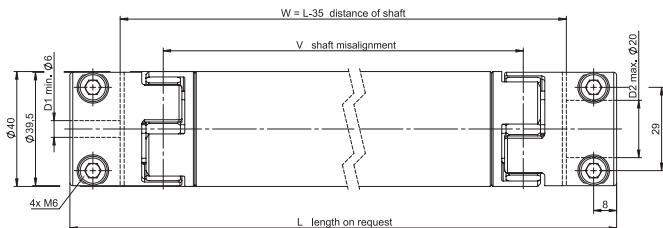


SWA-EE Series Order Example

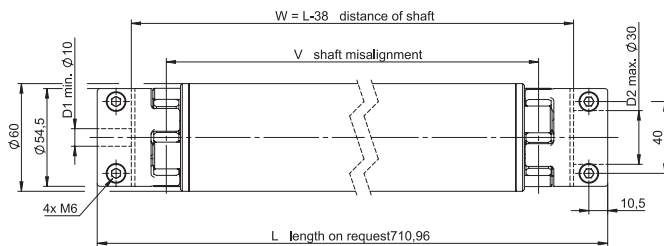
Code: **SWA-EE - 325 - 40H7 - 42H7 - 850mm**
 Options: 1 2 3 4 5

Options	Coupling Specifications
1	Coupling Series
2	Size
3	Bore D1
4	Bore D2
5	Total Length (mm)

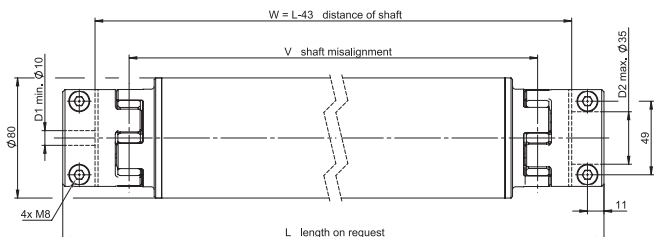
SWA-EE-17



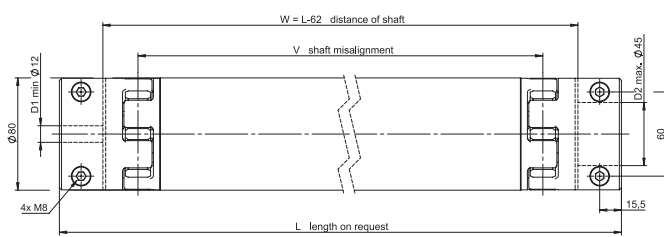
SWA-EE-60



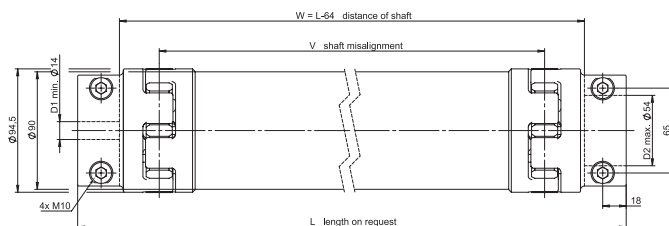
SWA-EE-160



SWA-EE-325



SWA-EE-450



Model No.	Nominal torque	Max. length	Max. axial shaft misalignment	Max. lateral shaft misalignment V	Mass (pipe/m) / Mass of the couplings	Torsional stiffness (pipe/m)	Torsional stiffness of the couplings	Lateral spring stiffness	Tightening torque of screws
	(Nm)	(mm)	(mm)	(mm)	(ca. kg)	(Nm/rad)	(Nm/rad)	(N/mm)	M _A (Nm)
SWA-EE-17	17	3000	1.8	L x tan 0.9	0.95 / 0.26	3360	1425	1005	17.5
SWA-EE-60	60	4000	2.1	L x tan 0.9	1.90 / 0.53	15500	3050	1280	17.5
SWA-EE-160	160	4000	2.2	L x tan 0.9	2.20 / 1.00	46600	10734	2200	42.0
SWA-EE-325	325	4000	2.7	L x tan 0.9	2.20 / 1.80	46600	24000	2785	42.0
SWA-EE-450	450	4000	3.0	L x tan 0.9	3.60 / 2.50	78600	27700	3360	85.0

Belt Driven Actuators
Series
MTB
Series
MTE
Series
MTS
Series
MTZ
Series
MTF
Series
CTJ
Series
Ball screw Actuators
Series
MTV
Series
CTV
Series
PNCE
Series
Automation Components