

SWE-EE Series Stainless Steel Line Shafts

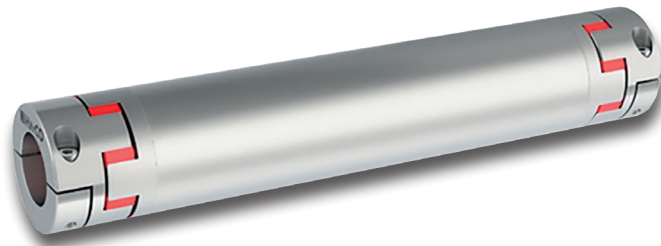
SWE-EE Series Characteristics

- Stainless Steel construction
- Very low mass inertia torque
- Backlash-free
- High torsional stiffness
- Equipped with two elastomer spiders
- Allows for large misalignment

Easy to mount
with divided
clamping hub



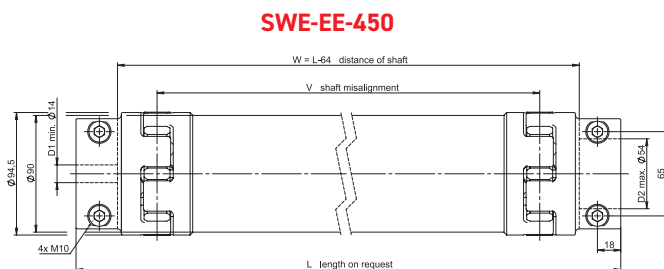
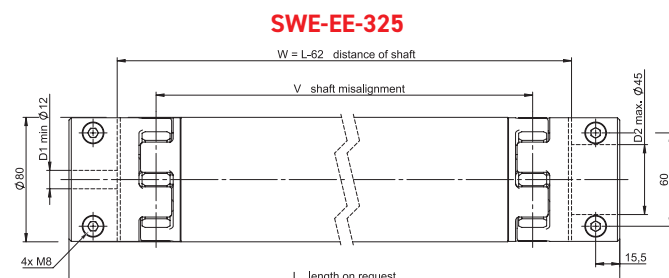
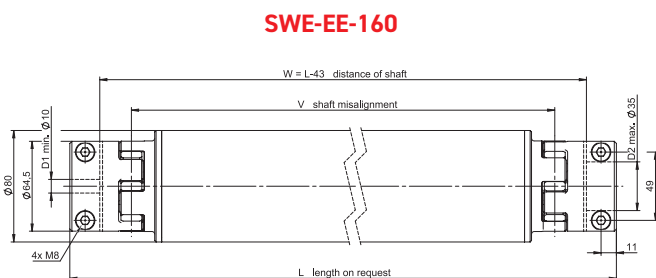
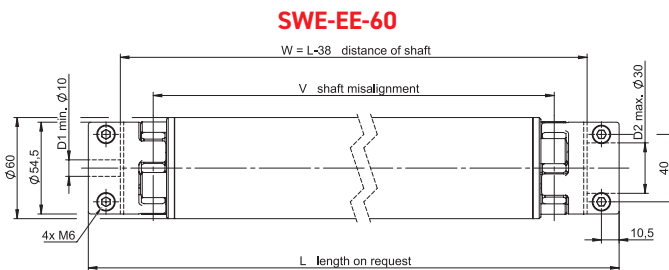
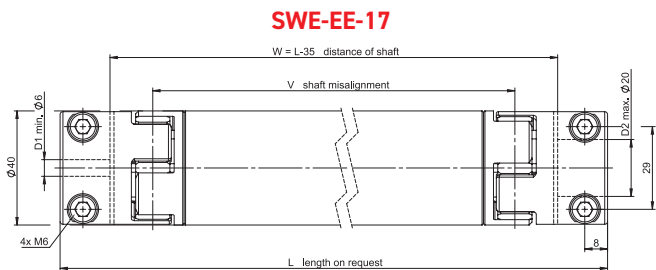
SWE-EE Series Stainless Steel Type With Double Ended Elastomer Connections



SWE-EE Series Order Example

Code: **SWE-EE - 325 - 40H7 - 42H7 - 850mm**
Options: 1 2 3 4 5

Options	Coupling Specifications
1	Coupling Series
2	Size
3	Bore D1
4	Bore D2
5	Total Length (mm)



Model No.	Nominal torque	Max. length	Max. axial shaft misalignment	Max. lateral shaft misalignment V	Mass (pipe/m) / Mass of the couplings	Torsional stiffness (pipe/m)	Torsional stiffness of the couplings	Lateral spring stiffness	Tightening torque of screws
	(Nm)	(mm)	(mm)	(mm)	(ca. kg)	(Nm/rad)	(Nm/rad)	(N/mm)	M _A (Nm)
SWE-EE-17	17	3000	1.8	L x tan 0.9	2.30 / 0.74	8320	1425	1005	10.0
SWE-EE-60	60	4000	2.1	L x tan 0.9	4.20 / 1.52	35000	3050	1280	10.0
SWE-EE-160	160	4000	2.2	L x tan 0.9	5.70 / 2.90	86190	10724	2200	24.0
SWE-EE-325	325	4000	2.7	L x tan 0.9	5.70 / 5.20	86190	24000	2785	24.0
SWE-EE-450	450	4000	3.0	L x tan 0.9	8.50 / 7.20	160200	27700	3360	48.0

- Belt Driven Actuators
- MTB Series
- MTE Series
- MTS Series
- MTZ Series
- MTF Series
- CTJ Series
- Ballscrew Actuators
- MTV Series
- CTV Series
- PNCE Series
- Automation Components