



KEY TRACKER.com

The Power of Traceability

Contents

Why Keytracker	3
Mechanical Peg System	4 - 5
Security Cabinets	6 - 7
Single Unit & Equipment Management	8 - 9
Key Hook Panels	10
Magnetic Block System	11
Security Seals	12
Access & Retention Pegs	13
Accessories	14 - 15

This brochure includes mechanical solutions used across various industries. For more information about Keytracker's [electronic key cabinets](#), [equipment lockers](#) or to discuss your specific control issues, please call 0121 559 9000, or visit www.Keytracker.com for details on all our products, or e-mail sales@Keytracker.com with your requirements and one of our friendly staff will be pleased to help.



Why Keytracker?

Keytracker have been providing secure key management solutions since 1996. The original “peg in-peg out” mechanical board, provides a quick and simple way to store, track and secure large quantities of regularly used keys & equipment. Over the years the mechanical system has been tailored to meet the varied requirements highlighted within different sectors.

The requirements from all business sectors continue to pioneer the ongoing development of our range of key and equipment management solutions, such as the increasingly popular electronic key cabinets and cloud based software.

Introducing a Keytracker system will provide an efficient control solution that allows you to do what you do best, without the interruption and cost of lost or misplaced keys or equipment. Some of the other benefits of using a Keytracker system include:

- Complete fool-proof organisation of all keys & equipment
- Increased security for your keys and equipment via the keytracker system with anti-tamper seals and optional self-closing steel push-button cabinet
- Eliminated opportunist theft – via keys sealed together and to a Keytracker board
- Reduced targeted theft – via security cabinet, Keytracker system and security seals
- Faster finding of keys – via numbered properties, vehicles or locks, with matching organised, numbered Keytracker system boards and initialled & coloured user pegs

Some of the reasons why our customers choose us include:

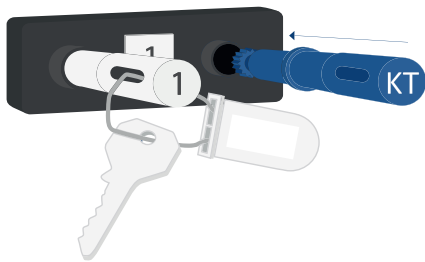
- The world’s largest range of key and equipment management solutions
- Same day despatch - worldwide
- Free system trials are available
- Unique rental options
- All products assembled or made in the UK
- Preferred supplier to many large brands
- ISO 9001:2008 and IIP accredited
- Every customer has a dedicated Account Manager
- Using our expertise; we collaborate with you to create your system, tailored to your requirements and promise to provide the most suitable solution at the best possible value for money
- One stop online shop for all Keytracker products
- We will always beat a competitor quotation

Mechanical Peg System

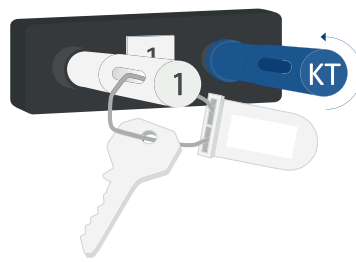


The Keytracker Mechanical Peg System is a simple 'peg-in, peg-out' board, based on the original "tally" system. Keys or equipment are secured to a numbered 'retaining peg' with an 'anti-tamper seal'. The matching number maybe on the paperwork, in the vehicle, or near the lock, for fast finding of the correct keys or equipment . Authorised personnel unlock the required key bunch with their issued 'access peg'. As one of 15 different colours the peg will clearly show which department has the keys. These will typically be engraved with their initials or an allocated number. Multiple pegs can be supplied for employees needing to take more than one set of keys or kit at a time. On return the key bunch will be returned to it's corresponding numbered position on the board and the employee will lock the bunch back in, at the same time unlocking their 'access peg' for use the next time they need a set of keys or equipment. At any time the board will show exactly who has any missing keys or equipment.

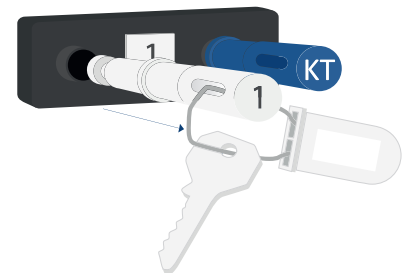
Accessing keys in 3 simple steps...



1. Insert your personal initialled & colour coded access peg



2. Twist anti-clockwise to release the desired key bunch



3. Remove the retention peg with keys attached

Quantities & Sizes

The Mechanical Systems' modular design means the board can be built to manage any quantity of keys. A steel frame houses the tracks, each consisting of 5 positions. Blank spacer tracks are available for large key bunches, ensuring that all the keys are always stored in their correct position and identifiable at a glance.

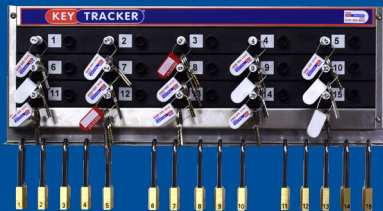
Frame Sizes

- ▶ T1 - Single unit
- ▶ M10/G - up to 10 keys
- ▶ M25/G - up to 25 keys
- ▶ M100/G - up to 100 keys
- ▶ M5/G - up to 5 keys
- ▶ M15/G - up to 15 keys
- ▶ M50/G - up to 50 keys
- ▶ M150/G - up to 150 keys

System Variations

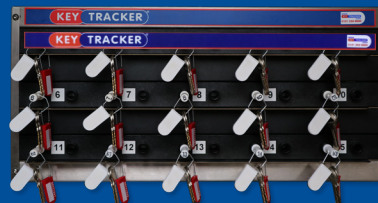
The system can be linked up with other Keytracker products to provide an all round management solution

Locktracker



A Padlock Storage bar can be added - Simply number your padlocks to match their keys and it will be instantly clear from the access peg colour & initials which trades/departments & individuals are working on which machines, improving health & safety, reducing culpability & ensuring padlocks are always returned.

Key Holding



For rarely used keys, Key-Holding Bars allow additional seals that must be removed, recorded & replaced. Proving keys were or were not used in case of an incident.

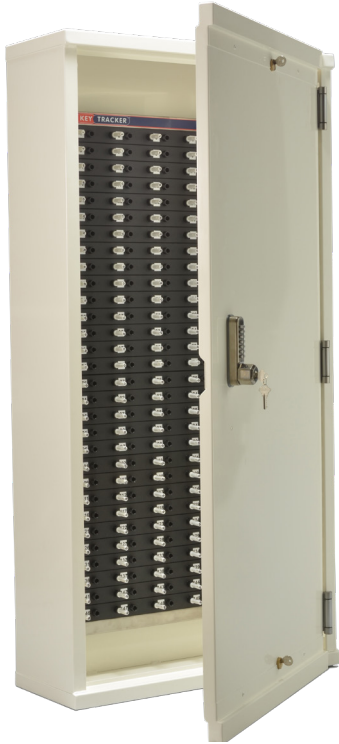
May also be used with Keytracker key Control Software for full audits & reports.

Tool tracker



Ensuring tools, ladders & equipment are always returned.

Security Cabinets



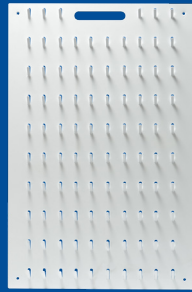
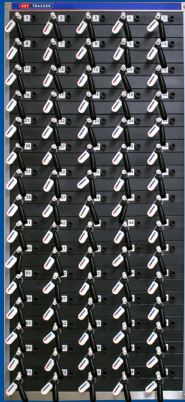
▲ Top internal shute bolts for night locking - self-closing hinge



▲ External key lock for shute bolt

The Secure Cabinets are constructed from 2mm sheet steel with a reinforced door as standard. The cabinet door includes self-closing hinges (Reversible left or right opening) with push button lock and key override. Top & bottom shute bolts for out of hours multi-point locking as standard. All cabinets are powder coated for durability and fitted internally with Keytracker support channels. Optional mirror-finish stainless door front available.

Optional card, pin or fingerprint access available.



All secure cabinets are compatible with the mechanical system and key hook panels. Both systems simply hook into place and may be removable or locked in as required.

Standard cabinets have the option for two systems by utilising the back of the cabinet and rear of the door. Shallow-depth cabinets for single boards also available.

Size 5 (Left)

Can hold a maximum of x2 150 position mechanical systems or x2 156 position key hook panels

CAB5

Size 4 (Middle Left)

Can hold a maximum of x2 100 position mechanical systems or x2 96 position key hook panels

CAB4

Size 3 (Middle Right)

Can hold a maximum of x2 50 position mechanical systems or x2 56 position key hook panels

CAB3

Size 2 (Right)

Can hold a maximum of x2 25 position mechanical systems or x2 36 position key hook panels

CAB2

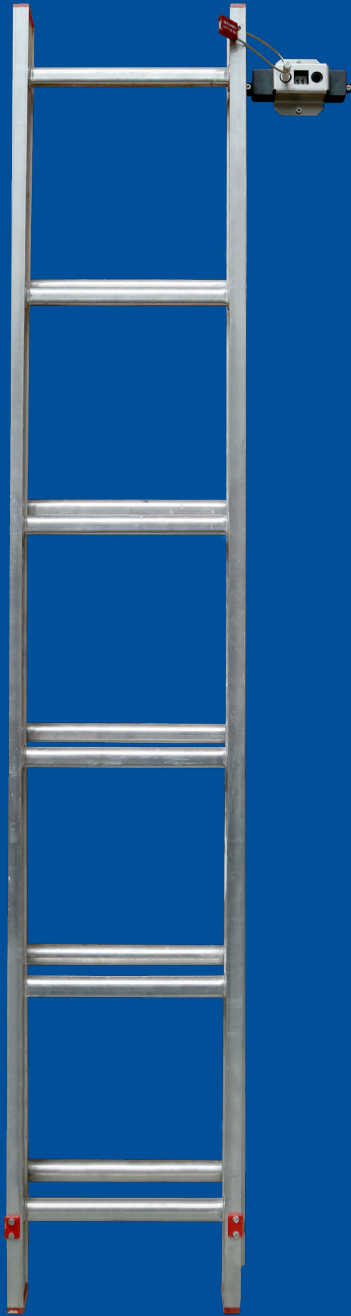


Equipment & Trade Plate Management

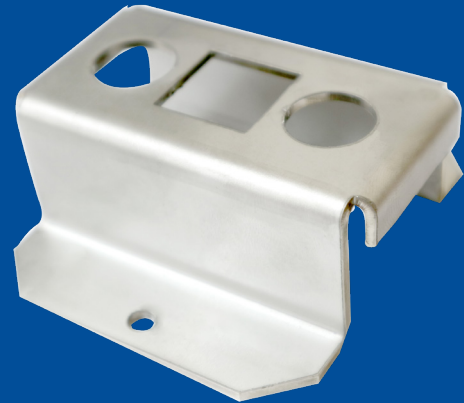


The 5 position Keytracker Mechanical System or single T1 unit offers the perfect solution for storing, securing and tracking tools, equipment & trade plates. The anti-tamper seals or cable seals will ensure that staff must assign their name to the equipment by leaving their access peg. At a glance, management or staff can quickly and easily see which equipment is in use and by whom, whilst ensuring its' speedy returny.



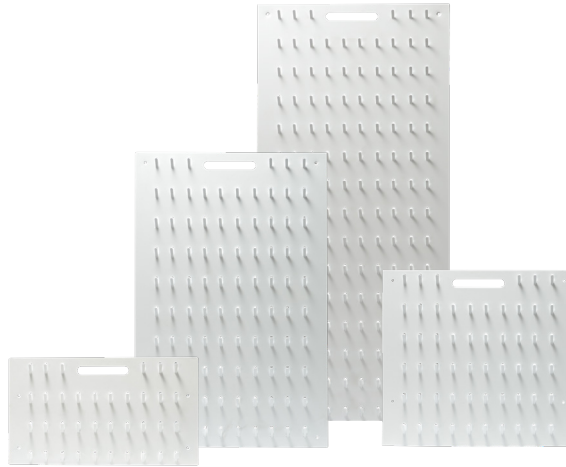


T/1 - For keeping track of a single set of keys, tools or equipment.



T/1c - For additional durability when keeping track of heavy or bulky equipment such as ladders or sack trucks.

Key Hook Panels



The Keytracker Key Hook Panels provide a simple yet effective place to store keys. The steel key hook panels are powder coated and punched out to create 45° angled hooks; pre-drilled holes for wall mounting or slotting into one of our bespoke security cabinets. Four standard sizes available 36, 56, 96 and 156 hooks.



- ▲ Keys hooked using a secure anti-tamper seal
To ensure a single key cannot be removed whilst in use



- ▲ Keys hooked using an optional numbered tag



KEYH

Magnetic Block System



MBCBT

MBCB

Keytracker's Magnetic Block Systems are a simple key storage and vehicle identification solution, ideally suited to vehicle repair outlets, easily identifying the vehicle in a crowded yard or storage area.

The brightly coloured blocks are fitted with powerful magnets and non-scratch rubber base to ensure adhesion to the roof of the vehicle. Bold white or black numbers can be added to each of the three sides and top ensuring 360-degree visibility.

These systems can be used in conjunction with the Mechanical Pegboard or other Keytracker solutions, depending on your specific requirements.



Accessories



◀ Magnetic Blocks

Coloured plastic block with a powerful magnetic non-scratch rubber base. Sold individually or as a set. Available with or without numbered stickers.

MB - *OP* (Orange Plain) *ON* (Orange Numbered)

YP (Yellow Plain) *YN* (Yellow Numbered)

RP (Red Plain) *RN* (Red Numbered)

BP (Blue Plain) *BN* (Blue Numbered)

WP (White Plain) *WN* (White Numbered)

GP (Green Plain) *GN* (Green Numbered)

NB - Keep base clean and clear of swarf



◀ Key Tags

Numbered hooks for storing keys. The key hook board numbers correspond with the magnetic blocks. Please specify colour when ordering. *KEYH*

Security Seals

Easily pushed together by hand, these seals ensure the key bunch is always returned complete.



Anti-Tamper Seals

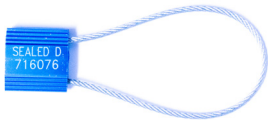
Writeable anti-tamper seals for securing and labelling key bunches or equipment.



Flexible Wire Seals

200mm steel anti-tamper seals for securing key bunches or equipment. Please specify colour when ordering.

Extra Strength Flexible Wire Seals



250mm Seals

250mm Steel anti-tamper seals for securing large key bunches or equipment.

Product Code - A39C



300mm Seals

300mm Steel anti-tamper seals for securing equipment.

Product Code - A39C



600mm Seals

600mm Steel anti-tamper seals for securing equipment.

Product Code - A39C



1000mm Seals

1000mm Steel anti-tamper seals for securing larger equipment.

Product Code - A39C

Very High Security Seals



Hardened Steel Keyring

Steel Ring seal for use in high security areas such as prisons to keep bunches of keys complete. Diameter of seal 55mm. The Steel Ring can only be used with the Closer, Crimper & Cutter.



Closer - CL1
Crimper - CR1
Cutter - CU1

Access & Retention Pegs



Metal Retention Pegs
Also available for heavy equipment



Retention Pegs
(S) Standard



Flat Access Pegs
(M) Management (left)
(S) Standard (right)



Bobbled Access Pegs
(M) Management (left)
(S) Standard (right)



Metal Detectable Access Pegs
Also available for food operations - in light blue only



(S) A03/S A08/S A06D/S A05/S A01/S A06L/S A09/S A10/S A29/S

Retention Pegs

Reinforced plastic pegs with a rounded end for holding keys into the Mechanical or KT Smart System. Keys or equipment are secured to the peg using anti-tamper seals or cable seals. All pegs include number engraving to match their board position.



(S) A23/S A21/S A20/S A14/S A15/S A16/S A18L/S A28/S A26/S A27/S A22/S A24/S A18D/S A19/S A13/S
(M) * A21/C A20/C A14/C A15/C A16/C A18L/C A28/C A26/C A27/C A22/C A24/C * A19/C A13/C

Access Pegs

Reinforced plastic pegs with a cog end for releasing retention pegs - may include engraving for up to 3 letters or digits.



(S) A23/N A21/N A20/N A14/N A15/N A16/N A18L/N A28/N A26/N A27/N A22/N A17/N A18D/N A19/N A13/N
(M) * A21/M A20/M A14/M A15/M A16/M A18L/MA28/M A26/M A27/M A22/M A24/M * A19/M A13/M

Bobbled Access Pegs

Reinforced plastic pegs with a cog end and extended tip for the releasing of retention pegs - may include engraving for up to 3 letters or digits.

Accessories



◀ Blank Spacer Track

For larger key bunches or to allow space for key description labels such as vehicle or building details. NB. Single or double spacers will double or triple your system size.



◀ Key Holding Bar

For additional numbered seals that must be removed, recorded with access reason & time, then replaced with a new numbered seal - for rarely accessed keys - Often used with our Key Control Software.



◀ Padlock Bar

For Lock-out, Tag-out health & safety applications. Simply number existing padlocks to match their key position then issue access pegs to authorised maintenance staff, to quickly identify users & ensure all padlocks are returned after use.



◀ Slide-Off Wall Mounts

Ideal if the board needs to be moved throughout the day from location to location or to be locked in a safe overnight.
Small - WMS Up to 50 keys / Large - WML 51 to 150 keys



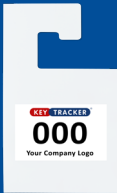
◀ Replacement Digital Lock

Fitted to all new Keytracker Mechanical Cabinets - 14 push button digital code with manual key override. Supplied with simple fitting & code changing instructions.



◀ Mirror Hanger

Plastic rear-view mirror hangers for identifying vehicles. Available in a wide range of colours with or without numbered stickers. Your company branding available.



◀ Large Mirror Hanger

White plastic rear-view mirror hangers for identifying vehicles. Available with or without numbered stickers. Your company branding available.



◀ Quick Release Keyring

Quick Release Keyrings for attaching to staff access pegs



◀ Key Fob Pouches

Leather pouches for the securing of key fobs with no key ring holes. The anti-tamper seal goes through both pouch holes before closing to ensure the key fob cannot be removed.



KEY TRACKER[®]

Keytracker Ltd

Station Road, Birmingham

West Midlands, B65 0JY, UK

Telephone: +44(0)121 559 9000

Fax: +44(0)121 559 9999

Sales@Keytracker.com

www.Keytracker.com



INVESTOR IN PEOPLE

