

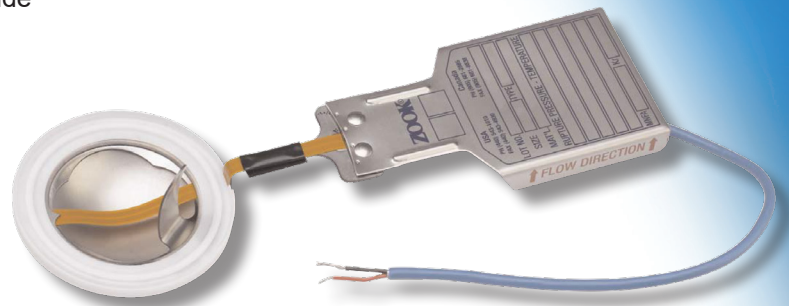
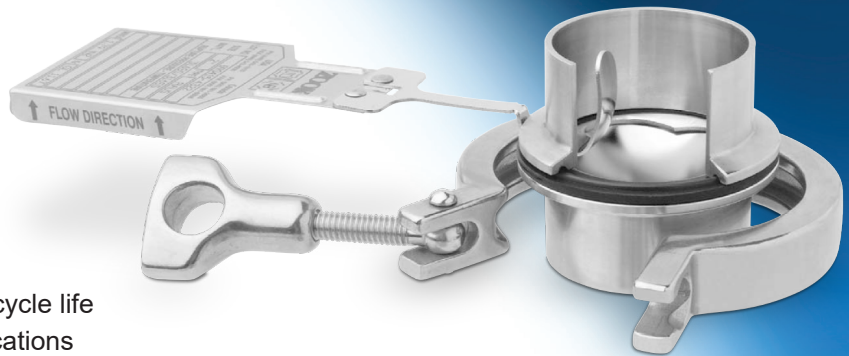


# RAUS Series Sanitary Metal Rupture Disks

The RAUS Sanitary Disk is a Reverse Acting Metal Rupture Disk design. Applications include: food processing, dairy, breweries, pharmaceutical, distilling, baking, canning, cosmetics, biotechnology, and petrochemical industries.

## Features

- Provides over-pressure protection in sanitary piping system
- Ideal for high purity and corrosion resistance service
- Designed for Non-fragmentation
- Rugged, scoreless design offers higher cycle life
- Excels in liquid, gas, or two-phase applications
- 0% manufacturing range is standard
- Operating ratios up to 95% of the low end of burst tolerance
- Self supporting under full vacuum
- Resists product buildup. Only the smooth convex side of the disk is exposed to the process medium
- Installs using industry standard Tri-clamp®/Tri-clover® fittings (NA-Connect mounting also available)
- Standard gasket materials: Black Buna-N, Black Viton, Black EPDM, White PTFE (see chart on reverse page for alternate materials)
- Sizes 1" (25mm) through 4" (100mm)
- ASME UD, CE, KOSHA and TÜV compliance available
- 3-A available for applicable materials and options. Contact ZOOK for more information



Shown with optional BI Burst Indicator and PTFE gaskets

## Options

**RAUS-L\*** A process side **PFA Teflon liner** provides extra protection from corrosion or viscous process build-up (PEEK liner required for 3A compliance).

**RAUS-BI\*** Equipped with ZOOK's Integral **Burst Indicator**.

Note: \*The maximum temperature rating of rupture disks supplied with liners and BI's is lower than the base disk material.

## Torque-Rite Nut Features

- An audible "click" indicating correct torque setting
- Maintains the recommended constant 50 inch/pounds force
- Retrofits all sanitary clamps, 1" to 6"
- No torque wrench or special training required
- Torque-rite® sanitary clamp nut (eliminates the problems associated with over/under tightening)



Optional  
Torque-Rite® Nut



# RAUS Series Specifications

## Minimum and Maximum Pressure Ratings

Size in. (mm)	Burst Pressure – psig (barg)			MNFA in <sup>2</sup> (mm <sup>2</sup> )	Tri-Clover Ferrule Dimensions in (mm)	
	Minimum		Maximum		Ferrule OD	Tube ID
	316*	w/liner				
1"	83	88	300	0.36	1.984	0.856
25 mm	(5.72)	(6.07)	(20.69)	(232)	(50.4)	(21.7)
1-1/2"	27	30	250	0.94	1.984	1.356
40 mm	(1.86)	(2.07)	(17.24)	(606)	(50.4)	(34.4)
2"	24	27	180	1.79	2.516	1.856
50 mm	(1.66)	(1.86)	(12.41)	(1154)	(63.9)	(47.1)
3"	20	22	120	434	3.579	2.865
80 mm	(1.38)	(1.52)	(8.28)	(2799)	(90.9)	(72.5)
4"	18	20	80	7.80	4.682	3.810
100 mm	(1.24)	(1.38)	(5.52)	(5032)	(118.9)	(96.8)

### Notes:

Maximum disk temperature is dependent on gasket material selected

\* Alternate sizes, disk materials, gasket materials and lower burst ratings may be available on request. Contact ZOOK for more information.

## Gaskets

Standard Gasket Materials (Stocked)			Temperature Range	
Materials	Cured	Colour	Min	Max
Viton	Bisphenol	Black	0° F (-18° C)	400° F (204° C)
Buna	Sulfur		-20° F (-29° C)	230° F (110° C)
EPDM	Peroxide		-67° F (-55° C)	347° F (175° C)
PTFE	-	White	-20 F (-29° C)	500° F (260° C)
Other Available Gasket Materials			Temperature Range	
Materials	Cured	Colour	Min	Max
Silicone	Peroxide	Red	-67° F (-55° C)	400° F (204° C)
		White		
		Black		
		Clear		
		Platinum		
Buna	Sulfur	White	0° F (-18° C)	400° F (204° C)
Viton	Bisphenol		-20 F (-29° C)	230° F (110° C)
EPDM	Peroxide		-67° F (-55° C)	347° F (175° C)

## Manufacturing Design Range & Total Performance Tolerance

ASME					PED					
Burst Pressure (psig)		Manufacturing Design Range			Burst Tolerance	Burst Pressure (barg)		Total Performance Tolerance		
Min	Max	Good	Better	Best		Min	Max	Good	Better	Best
1.0	<2.5	-10%	-5%	-0%	±0.33 psig	0.069	<0.172	±50%	-	±0.023 barg
2.5	<5.0	-10%	-5%	-0%	±0.5 psig	0.172	<0.345	±30%	±25%	±0.035 barg
5.0	<7.0	-10%	-5%	-0%	±0.5 psig	0.345	<0.483	±20%	±17.5%	±0.035 barg
7.0	<11.0	-10%	-5%	-0%	±0.8 psig	0.483	<0.759	±20%	±15%	±0.055 barg
11.0	<15	-10%	-5%	-0%	±1.3 psig	0.759	<1.034	±20%	±15%	±0.090 barg
15.0	<26	-10%	-5%	-0%	±2.0 psig	1.034	<1.793	±20%	±15%	±0.138 barg
26.0	<40	-10%	-5%	-0%	±2.0 psig	1.793	<2.758	±15%	±12.5%	±0.138 barg
40.0	Max	-10%	-5%	-0%	±5%	2.758	Max	±10%	±7.5%	±5%

## Certified Flow Resistance Factors

Disk Type	K <sub>fl</sub> (liquid)	K <sub>fg</sub> (Gas)
RAUS	11.67	11.67

Teflon - TM The Chemours Company  
Tri-clamp/Tri-clover – TM Alfa Laval  
Torque-Rite – TM Rubber Fab



RAUS\_062020

Visit us at [www.zookdisk.com](http://www.zookdisk.com)

### SERVING AMERICA, CENTRAL & SOUTH AMERICA

16809 Park Circle Drive  
Chagrin Falls, Ohio 44022  
United States

Toll Free: +1 800 543 1043

Phone: +1 440 543 1010

Fax: +1 440 543 4930

E-mail: [sales@zookdisk.com](mailto:sales@zookdisk.com)

### SERVING EUROPE, MIDDLE EAST & AFRICA

Navigation House, Bridge St.  
Killamarsh, Sheffield, S21 1AL  
United Kingdom

Phone: +44 (0) 1909 560999

Fax: +44 (0) 1909 560860

E-mail: [sales.europe@zookdisk.com](mailto:sales.europe@zookdisk.com)

### SERVING CANADA

4400 South Service Road  
Burlington, Ontario, L7L 5R8  
Canada

Toll Free: +1 800 370 6057

Phone: +1 905 681 2885

Fax: +1 905 681 8838

E-mail: [sales.canada@zookdisk.com](mailto:sales.canada@zookdisk.com)

### SERVING ASIA PACIFIC

Unit No. 23A-05, Menara Landmark  
No.12, Jalan Ngee Heng  
80000 Johor Bahru, Johor,  
Malaysia

Phone: +60 (7) 2910099

Fax: +60 (7) 2910096

E-mail: [sales.asia@zookdisk.com](mailto:sales.asia@zookdisk.com)



Safety through knowledge and performance.