

# sliptech

SPECIALIST CLEANING & ANTI-SLIP SOLUTIONS



Slip-Testing • Anti-Slip Floor Treatments • Floor Maintenance  
Cleaning Products • Specialist Floor Cleaning • Builders' Clean

## Contents

Introducing Sliptech	<b>02</b>	Slip Resistance Testing	<b>11</b>
Our Clients	<b>03</b>	Anti-Slip Treatments	<b>12</b>
Pool Surround, Changing Room Maintenance and Restoration	<b>05</b>	Decking Restoration, Sealing & Treatment	<b>13</b>
Natural Stone Restoration	<b>07</b>	Sealing	<b>14</b>
Specialist Builders' & Sparkle Cleans	<b>08</b>	Industrial Anti-Slip Floor Paints	<b>15</b>
Vinyl & Rubber Floor Cleaning	<b>09</b>	Tile Specification & Construction Projects	<b>16</b>
Tile Grout Colouring	<b>10</b>	DIY Anti-Slip Kits	<b>17</b>
		Ultraclean Range	<b>18</b>



# Introducing **sliptech**

SPECIALIST CLEANING & ANTI-SLIP SOLUTIONS

Sliptech is a class leader in anti-slip technologies providing slip resistance testing, anti-slip treatments and maintenance programmes for all floors.

With the use of innovative products and procedures, we are able to permanently improve the safety and appearance of most types of floors, ensuring they meet HSE (Health and Safety Executive) guidelines.

We have the knowledge and expertise to provide long term solutions to maintain the aesthetics and performance of your floors.

After treatment, Sliptech will supply a full floor report, a certificate to confirm the facility meets with HSE recommendations and tailored, on-going maintenance advice to ensure floors are kept at their best in terms of aesthetics and safety. We also offer comprehensive guarantees on our work and, as part of the service, additionally we offer cleaning staff training on appropriate cleaning products and their application.

Our professional teams cater for both small and large scale projects and work with the facility to ensure minimum disruption whilst the works are carried out. Offering a fast nationwide service which includes options for working outside normal business hours.

For more information on any of our products and services contact Sliptech now on:

**01206 826788**

**info@sliptech.co.uk**

**www.sliptech.co.uk**





## Our Clients

**Our projects include deep cleaning and anti-slip treatments in a range of areas including:** swimming pool surrounds and changing rooms, hotel foyers & bathrooms, health clubs, spas, schools, universities, restaurants, kitchens, hospitals, shopping centres and many others.

**Our clients in the leisure, service, construction and financial industries include:**

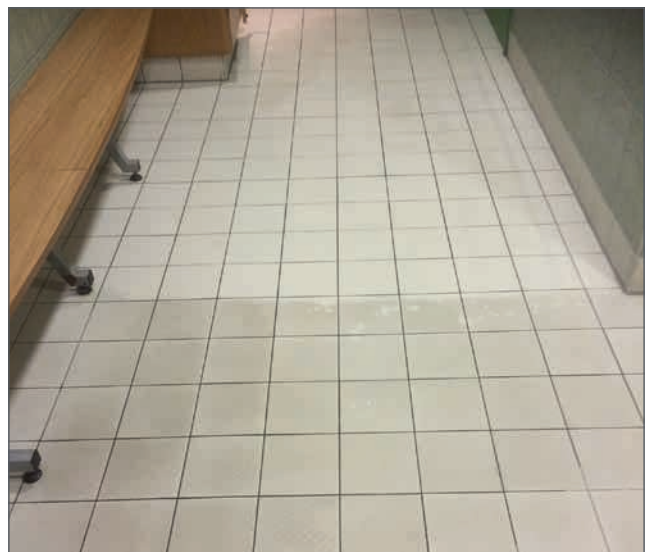
- Arcadia Group
- Bourne Leisure
- Bulgari Hotels and Resorts
- Emirates Stadium
- Gucci
- Harrods
- IKEA
- Kier Group
- Leeds Railway Station
- Marriott Hotel Group
- Napp Pharmaceutical
- Nirvana Spa
- Oundle School
- Signature Flight Support
- Sussex University
- The Berkeley Hotel London
- The Berkeley Group
- The Club Company Group
- Tiffanys
- West Lothian County Council



SlipTech has provided slip tests, deep cleans and anti-slip treatments to Nirvana Spa for several years and I would like to say that I am always impressed by their superior standard of work and the thoroughness and professionalism of their staff. A company definitely committed to excellence!  
**Logistics and Supply/Health and Safety Manager, Nirvana Spa, Berkshire**



▲ Deep clean and re-polish of this tired wooden floor. The results were amazing.



▲ Deep clean to changing room floor removing dirt, calcium and body fats.

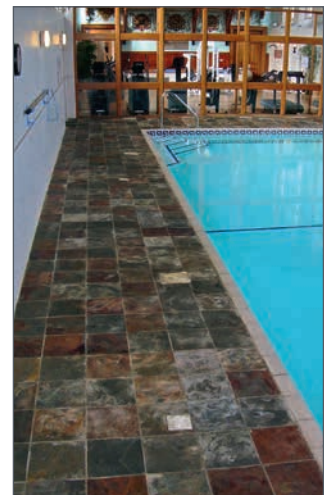
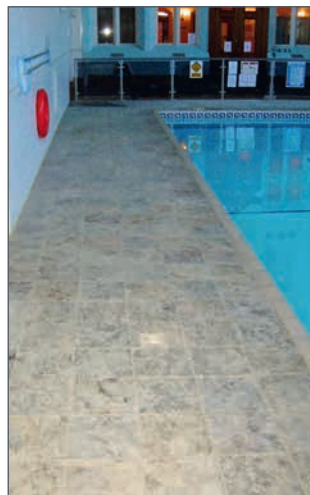
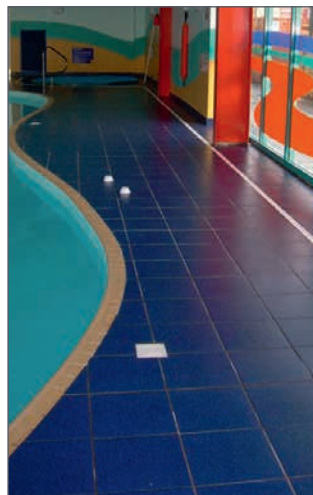


▲ These natural stone tiles were deep-cleaned, enhanced and sealed to restore natural hues also providing protection and ease of onwards maintenance.

“

The treatment and deep cleaning advice we received from Sliptech has eliminated the requirement for mats, reducing cleaning time and manual handling. The provision of a more hygienic and pleasant environment for swimmers. Slips and falls have been significantly reduced. Sliptech have provided a professional friendly service, at the point of booking and whilst working on site.

**Oundle School**



▲ A deep clean on a pool surround removing a calcium build up.

▲ Deep clean removal of dirt, calcium and body fats.

“

We are delighted to provide Sliptech with a well earned testimonial, we would highly recommend them as their execution of the job was of a high quality, their service is very good and we would certainly use them again in the future.

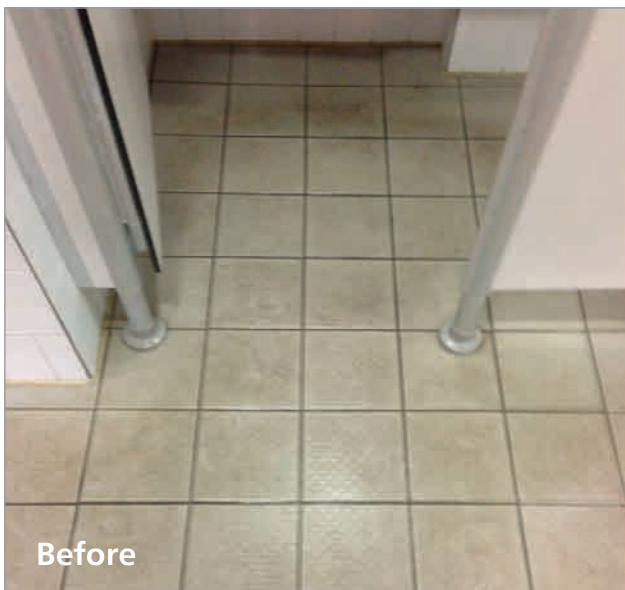
**Pellikaan Construction Ltd**



## Pool Surround, Changing Room Maintenance and Restoration

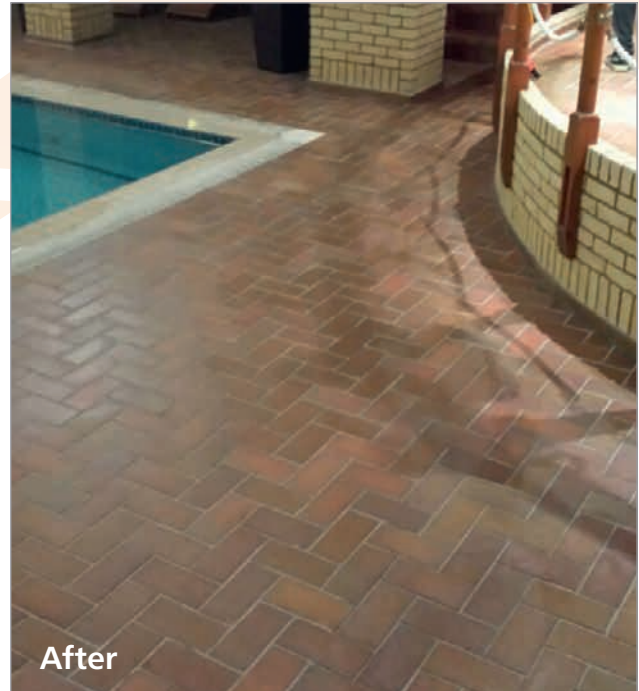
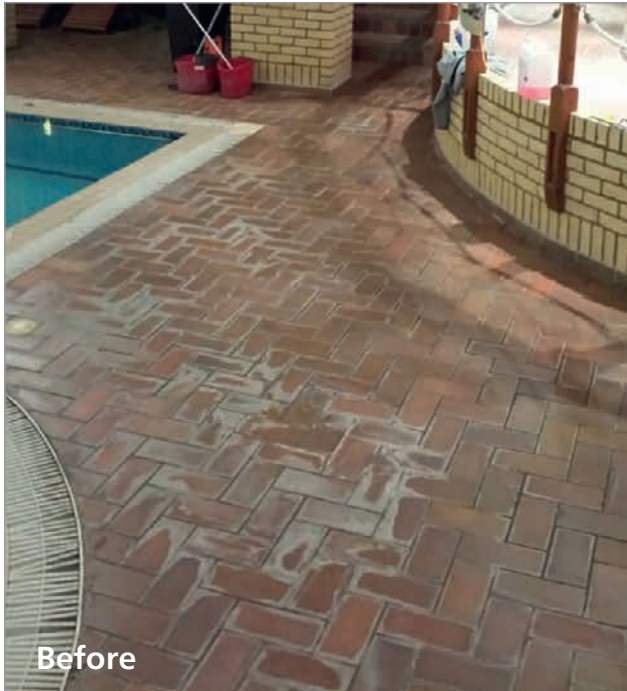
The correct maintenance of a pool surround and changing room is essential in providing your clients with a clean, sanitary and safe environment.

General 'mop and soapy water' cleaning of these areas, generally tends to move dirt around rather than neutralise or remove it from the surface. This can very quickly lead to a film building up which consists of a combination of contaminants that include detergent residues, body fats and calcium. This film once formed, is extremely difficult to remove through general cleaning methods and will leave the floor looking dirty, jaded and, in many cases, slippery.



The vast majority of premises we visit with slip problems are caused by surface contamination and poor maintenance.

We have experience of working with rubber crumb, ceramic, porcelain and natural stone floors. We can offer a thorough deep clean service which will include a full report outlining the current safety conditions, any steps required to resolve issues and the options available to rectify any problems.



Our expert cleaning team are able to carry out a professional deep clean and treatment where necessary, to any problematic areas, with the specific aim of leaving your floor(s) in the best possible aesthetic and safe condition. This can be done out of hours, to avoid disruption and revenue loss, which can be considerable at busy facilities.

A full report and certificate(s) of conformity to HSE and UKSRG slip resistance guidelines will be issued following completion, together with tailored cleaning guidelines. If required, we can arrange to conduct training with your staff to ensure that correct procedures are followed. These measures are intended to enhance the maintenance regime to ensure the floor remains in a safe and sanitary condition.



We supply a range of specialist cleaning products, specifically designed to tackle these build ups in an efficient and cost effective way.

## Natural Stone Restoration

Let us help you restore your floors – back to their best.

Natural stone especially calcite-based stones such as marble, travertine and limestone have a delicate chemical disposition. This may adversely interact with general household detergents, abrasives, acids or alkali solutions which will damage the integrity of any natural stone surface.



For over 15 years, our expertise and quality of work has made us a leading force in the field of natural stone floor polishing, cleaning and restoration.

Using a combination of high standards of craftsmanship and restoration skills we can restore your natural stone surfaces back to their original and beautiful appearance. We are committed to utilising the most suitable products and latest advances in technology sourced both from home and abroad, to ensure that your natural stone is treated and maintained in the most effective and efficient way.

For new build or renovation projects we can offer advice and services to provide long term solutions to maintain the natural beauty of the stone.

For newly laid floors it is essential to establish the correct sealing and cleaning measures as soon as the surface is laid.

**Whether you have marble, travertine or limestone, we can restore your floor back to looking its very best.**





## Specialist Builders' and Sparkle Cleans

As construction projects near the point of completion, the final finish and general look of the premises comes into question.



By its very nature, the building process will always leave behind a lot of dust, grout residue, paint, silicon and general building dirt which needs to be cleaned off, especially from floor surfaces.

These are difficult to remove completely using conventional methods. The general result is that residues are left on the surfaces, which in turn quickly attracts contaminants resulting in areas looking dirty and unsightly.

By using a range of specialist cleaning products, techniques and machinery, we can completely remove these residues ensuring the area is clean and any last minute snagging is highlighted.

Where required, we can provide the client with onward maintenance guidelines as well as slip testing to certify the floors are safe and ready for use.

In addition to this we offer a thorough sparkle clean service as one of the last processes before the area is handed over to the client leaving a clean and maintainable floor which looks amazing.



## Vinyl Floor Cleaning

Vinyl flooring is often viewed as a cheaper and less problematic alternative to tiling in many areas.

If body fats, general contamination or detergent residues are not effectively eliminated, an unsightly surface build-up or film can become ingrained on the surface which is difficult to remove by general cleaning.

Our specialist trained teams have the expertise to remove this stubborn film and return the slip resistance to its original factory condition.



## Rubber Floor Cleaning



Rubber flooring offers a safe and durable surface for many pool surrounds and changing room areas, especially for children and disabled areas. Whilst it offers a lot in terms of safety, due to its cushioned porous nature, it is sometimes difficult to clean.

In pool environments and hard water areas, often calcium starts to build up on the surface and this tends to leave a white film. The calcium deposits can combine with body fats and general surface soiling turning this white film to brown, resulting in unsightly and potentially unhygienic areas.

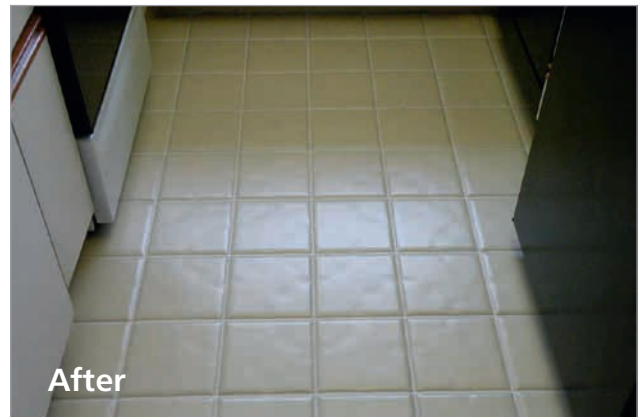
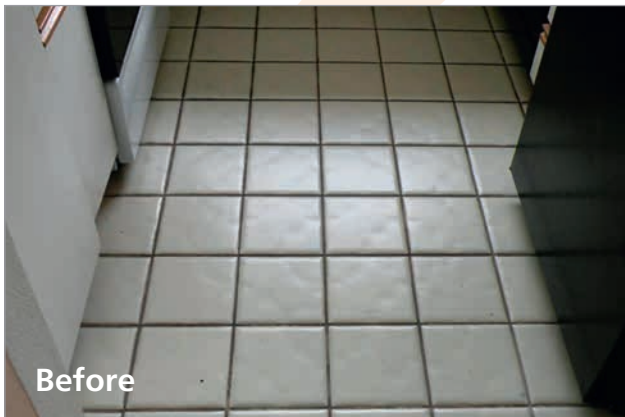


By using specialist products and machinery we can remove this build up thereby restoring the floor close to its original condition and provide advice on how to maintain this appearance.



## Tile Grout Colouring

Porcelain and ceramic tiles are often grouted with pale colours such as ivory creams and off whites to increase the feeling of space. They look stunning initially when the grout is clean, sharp and crisp, but very quickly, with day to day foot traffic, the grout lines begin to discolour. Left long enough the grout will eventually go black.



Our product eliminates variations in grout colour due to staining, uneven colour batches, curing, fading or damage, providing a water tight, stain resistant, durable protection. With its built in mildicides, it ensures sanitation for years.

We can match a wide variety of grout colours. You can maintain the original grout colour from wall to wall or, change the colour of the grout completely. Best of all, colour seal greatly reduces ongoing maintenance – being completely impervious to moisture dirt and grime which cannot penetrate the sealed surface. Harsh chemicals can be replaced by neutral cleaners completely eliminating the need to remove grout from tiled surfaces.

**This is a product that requires professional application – please contact us for a quote.**

“

The help and advice from Sliptech was great in the preparation of the work and putting processes into place to maintain the surfaces. With a good warranty Sliptech offer excellent long term value. I would certainly use Sliptech again.

**Health and Safety Compliance Manager, Xcite Leisure Centres, West Lothian**

## Slip Resistance Testing



### Pendulum Testing Explained:

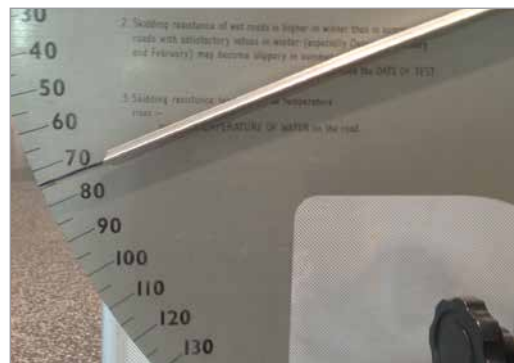
The pendulum slip test has been recognised by the Health and Safety Executive as a reliable and robust test to provide accurate analysis on the slip potential of all types of flooring. This test can be used to portray bare foot and shod foot, dependent on the area the tile is to be used.

The pendulum slip test is the subject of a British Standard, BS 7976: Parts 1-3, 2002.2 and BS – EN14231. Testing is carried out following the UK Slip Resistance Group (UKSRG) and HSE guidelines and more recently under CE Marking introduced in July 2013.

These methods are based on a swinging, imitation heel sweeping over a set area of flooring in a controlled manner. The slipperiness of the flooring has a direct and measurable effect on the pendulum test value (PTV) given. The two test methods differ slightly in the way they are conducted, but the results are interpreted in the same way.

The table below is used to interpret the readings attained from the pendulum tests results and indicate the floors slip potential:

Reading	Slip Potential
24 & below	High potential for slip
25-35	Moderate potential for slip
36 & above	Low potential for slip



Slip resistance is also referred to as the Co-Efficient of Friction (CoF).

If a floor indicates a 'high' or 'moderate' risk of slip – the floor can be treated with an anti-slip treatment to bring the slip risk down to 'low'. The anti-slip treatment is controlled to achieve an appropriate safe level of grip with the minimum impact to the floor's aesthetics.

Different characteristics of floors, (porosity, density etc.) combined with the operational use, requires tailored applications. The treatment is adjusted to meet the standards required for the intended use. The aim of the treatment is to get the surface reading above 36 on the pendulum scale in wet and dry conditions.

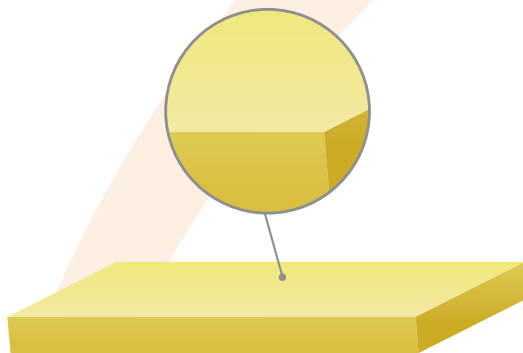


## Anti-Slip Treatment

### The science behind the results.

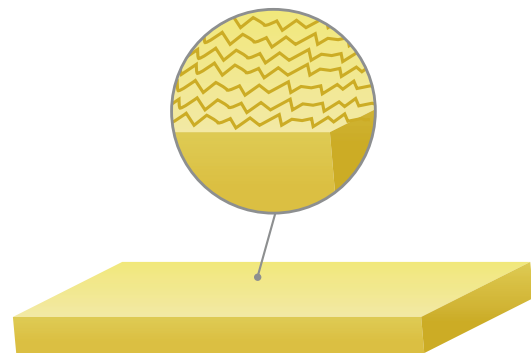
Our anti-slip treatment micro-etches the surface of the tile which works to accentuate the natural peaks and troughs of the stone. The changes to the surface of the stone are invisible to the human eye, but the treatment microscopically roughens the surface increasing the slip resistance and preventing the foot slipping.

**HIGH MAGNIFICATION**



**BEFORE TREATMENT**

**VERY HIGH MAGNIFICATION**



**AFTER TREATMENT**

The aim of the treatment is to achieve the optimum grip with the minimum impact to the aesthetics of the floor. There are many things taken into consideration when evaluating a floor; the material characteristics (porosity, density etc.), operational conditions and whether it is a wet or dry environment. These variables mean that each project demands a unique solution.

We are able to tailor the treatments to meet the required performance standard for the intended use, thus ensuring that the surface meets the individual project specifications.

We have a range of treatments that are effective on almost any surface, including natural stone, vinyl, ceramics, porcelain and wood.

Following each treatment application, we issue a comprehensive maintenance schedule detailing cleaning products and techniques which are designed to work in conjunction with the treatments and sealants applied.



## Decking Restoration, Sealing and Treatment



Whilst being a very popular and attractive outdoor flooring option, wooden decking can become very dangerous after a short period of time. This is often down to the build up of algae and moss on the surface which can make the surface extremely slippery in wet conditions. A thorough deep clean will generally restore the anti-slip qualities, however this build up is often hard to remove without specialist machinery and products.

Sliptech can offer a full deep clean service to restore the surface to its original condition both in terms of aesthetics and safety.



To increase the grip further, and ease the future maintenance, we can then apply our anti-slip sealer to the surface. This fully seals the surface meaning moss and algae can be easily removed and will not build up to the same levels. The grit treatment in the sealer will raise the slip resistance to above the HSE guidelines.

**This is a product that requires professional application – please contact us for a quote.**





## Sealing

Sealing a floor can help protect natural stone and other porous flooring materials from numerous potential contaminants. Once sealed effectively, dirt is less able to adhere to the floors surface making onward maintenance easier and keeping it clean for longer.



Drytreat sealants not only provide great surface stain protection, but also protect against more serious common types of damage caused by water ingress (penetration), including: efflorescence, salt spalling (salt attack), freeze-thaw spalling, picture framing and inhibits mold growth in the pores of the treated material. The sealants are equally effective inside or out, the breathable properties allowing water vapour to pass through and out of the material preventing serious frost damage.

Sliptech are an accredited applicator for Drytreat Products including Stain Proof and Intensifia – we can apply these products to your floors and provide you with product guarantees.

**Contact us for further information.**



# DRYTREAT

EXCLUSIVE DEALER



The advice we received and the workmanship was outstanding. We certainly would have no hesitation to ask for your services in the future.

**Health and Safety Officer, Clarice House Spa**

## Industrial Anti-Slip Floor Paints

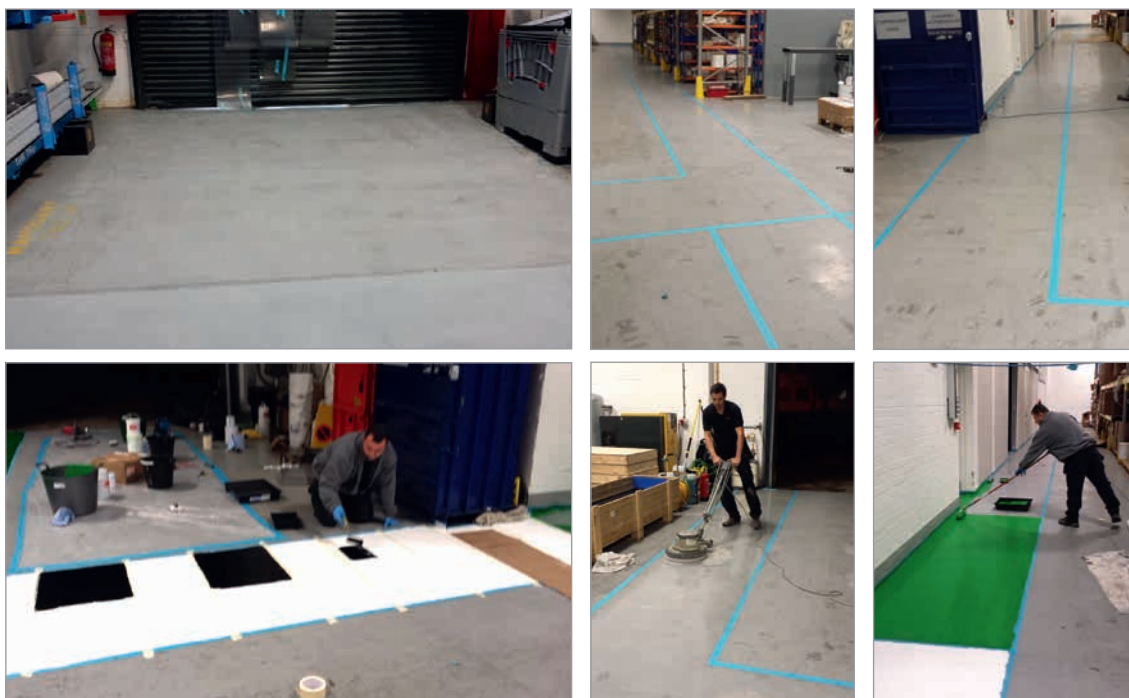
The vast majority of industrial floors, factories and warehouses are constructed from concrete which can become dirty and dusty. These types of floor are often sealed or painted to reduce airborne dust and for demarcation purposes. Many sealants and paints reduce the slip resistance of the floors especially in wet or contaminated conditions.

We are able to apply hard wearing 2-part epoxy paints with anti-slip media which comfortably exceed the HSE and UKSRG slip resistance recommendations.

The service includes full preparation of the existing floor and masking any areas that require protection. The paint can be mixed to almost any colour choice including the full range in the RAL chart.

Walkways, crossings and bespoke requirements can be created subject to limitations with regard to drying times etc.

Projects can be undertaken out of hours to limit business disruption.



### Typical Application:

**Location:** Manufacturing Warehouse

**Aim:** To repaint the floor with a coating with increased slip resistance properties in dry conditions with a subsequent visit to create pedestrian walkways and a crossing

**Result:** The floor was deep cleaned and a 2-part epoxy paint was applied



Good customer service and the job was planned well and completed on time. Sliptech worked around our working periods so our production was not affected. The team at Sliptech deliver what they promise on time and with the least amount of trouble and disruption.

**Origin Frames Ltd**





## Tile Specification and Construction Projects



Ensuring floors are slip safe is now a major requirement on all construction projects. Whilst expectations are still the same in terms of aesthetics and functionality, the increased onus on responsibility for safety at the construction phase makes an anti-slip system an option to meet all requirements when selecting tiles for new floors.

### Current Legislation - CE Marking

On 1st July 2013, the new Construction Products Regulation (305/2011/EU) came into force making it mandatory for construction products in the UK (and the rest of Europe) to be CE marked.

The new Construction Products Regulation (CPR) applies to products or kits which are placed on the market for incorporation in a permanent manner in construction works and the performance of which has an effect on the basic requirements of the works.

### Conformity Requirements

The new regulation is completely different to other CE Marking Legislation and requires the product to be assessed against a harmonised European standard which in the case of flooring, is the pendulum slip test.

The advantage of harmonising across Europe provides architects, designers and specifiers with a clearer understanding of the slip performance of flooring materials by using a universal test method which replaces a number of existing incomparable tests.

**We work with a number of architects, tile manufacturers and suppliers to provide them with slip resistance analysis and results for their products to help their clients to make informed and appropriate flooring choices.**



During the past couple of years, far greater emphasis has been put on slip resistance in commercial applications. We have worked with Sliptech for several years, and the thoroughly professional manner in which the technical information is provided, as well as the quality of service given, is exemplary and has proved crucial in assisting to secure several major projects. Sliptech ensure they are fully up-to-date on current legislation and ensure that this information is passed on to us accordingly, so we can relay it on to our clients. Whether it is for testing purposes, or to overcome issues on a specific site, Reed Harris would have no hesitation in recommending Sliptech.

**Architectural Sales Manager, Reed Harris**

## DIY Anti-Slip Kits

Ideal for ceramic & porcelain floors as well as porcelain baths.

The kit will cover up to 10 square metres and consist of a Pre-treatment, Anti-Slip Activator and a Cleaner/Degreaser for maintenance. Disposable gloves and instructions complete the package.

Totally safe for domestic use – not an acid etching treatment.

- Suitable for kitchens, bathrooms, showers Jacuzzis & wet rooms
- Easily applied by brush or mop
- Will not damage or attack the surface
- Effective for bare feet and a variety of footwear
- Can be used on polished or high gloss tiles
- Surfaces can be walked on immediately following treatment
- Treated surfaces are easily cleaned and maintained
- Minimum 3 year life expectancy
- Unique proven patented system

The kit has been specifically designed around the “end user” for small domestic applications, where our professional service is either not required or not economically viable.





## ULTRACLEAN RANGE

To maintain, enhance and prolong the life of your floors, Sliptech supply a comprehensive specialist range of services and products which includes sealants, cleaning and de-greasing agents, polishes and sanitisers.



Next day delivery on all products ordered before 2pm

[www.sliptech.co.uk](http://www.sliptech.co.uk)

01206 826788

[sales@sliptech.co.uk](mailto:sales@sliptech.co.uk)



Brown Oaks Barns, Alresford Road, Wivenhoe, Essex CO7 9JZ

Tel: +44 (0)1206 826788 • Email: [sales@sliptech.co.uk](mailto:sales@sliptech.co.uk)

[www.sliptech.co.uk](http://www.sliptech.co.uk)

 [sliptechuk](https://www.facebook.com/sliptechuk)  [@SliptechUK](https://twitter.com/SliptechUK)

Registered Company Address: 1 Brewery House, Brook Street, Wivenhoe, Colchester, CO7 9DS • Registered No: 3901420