

# SAFETY BARRIERS

**PRODUCT** Barrier systems designed for the protection of people, warehouse equipment and stock.

- FEATURES**
- Finished in high-visibility Orange (RAL 2011) as standard; Yellow (RAL 1003) finish available on request.
  - Galvanised finish available for external applications.
  - Modular construction enables easy extension or quick replacement of damaged components.
  - Supplied with floor fixings for convenient installation.

- DESIGN**
- Standard heights ranging from 450 to 1100mm.
  - Bespoke barrier lengths to suit customers' individual requirements.
  - Non-standard heights and finishes available on request.

**OPTIONS**      **REP 100 – TWIN CHANNEL BARRIER**

- Height: 750mm or 1100mm.
- Individual barrier length: up to 2500mm.
- Longer barrier runs will have posts located every 1900mm.

**REP 100H – TWIN CHANNEL BARRIER  
WITH PEDESTRIAN HANDRAIL**

- Height: 1100mm.
- Individual barrier length: up to 2500mm.
- Longer barrier runs will have posts located every 1900mm.



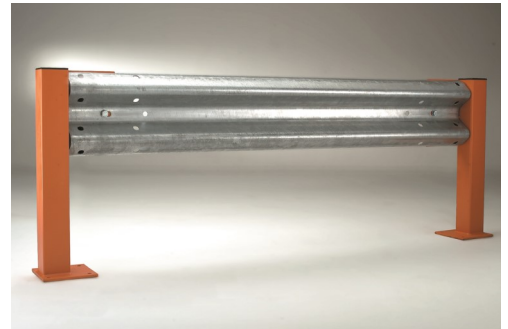
## PEDESTRIAN BARRIER

- Lightweight pedestrian barrier.
- Height: 1100mm.
- Individual barrier length: up to 2500mm.
- Longer barrier runs will have posts located every 1900mm.



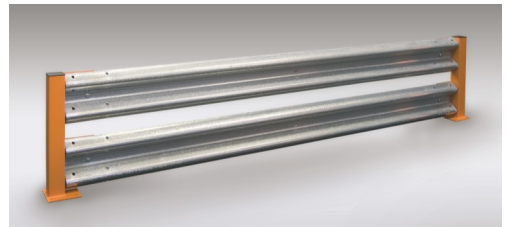
## REP 101 – SINGLE ARMCO BARRIER

- Height: 600mm or 750mm.
- Individual barrier length up to 2500mm.
- Longer barrier runs will have posts located every 1600mm.



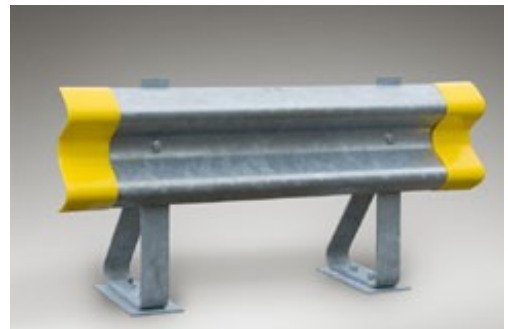
## REP 101D – DOUBLE ARMCO BARRIER

- Height: 750mm or 1100mm.
- Individual barrier length up to 2500mm.
- Longer barrier runs will have posts located every 1600mm.



## REP 101S – SPRUNG POST ARMCO BARRIER

- Height: 610mm.
- Individual barrier length up to 2500mm.
- Longer barrier runs will have posts located every 1600mm.
- Standard finish: Galvanised.



## REP 103 – TUBULAR RACK END BARRIER

- Height: 500mm or 750mm.
- Individual barrier length up to 2400mm.
- Maximum length with centre post is 4000mm.



## REP 104 – LOW LEVEL CHANNEL BARRIER

- Height: 450mm or 750mm.
- Individual barrier length up to 2500mm.
- Longer barrier runs will have posts located every 1900mm.

