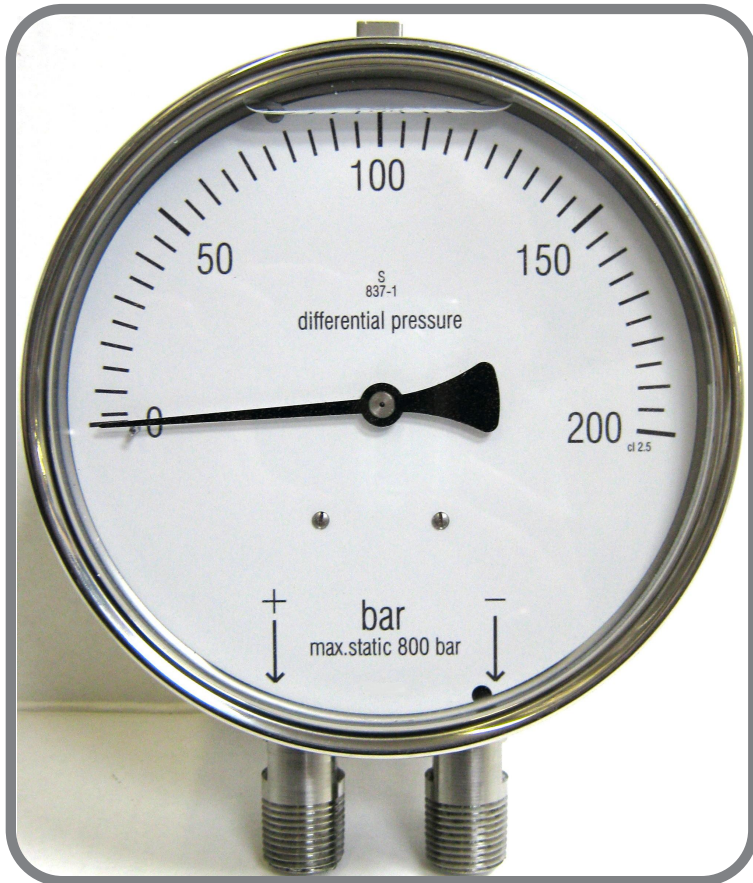


Bourbon Tube Type Differential Pressure Gauge



Bourbon Tube Type - 13T

Application:

For monitoring filter condition, by indicating a rise in differential pressure across the filter would show the filter becoming clogged. Another use is to measure the differential pressure across an orifice, and the resulting dial reading can be shown as a flow.

Nominal Dial Size: 100mm and 160mm

Accuracy:
+/- 2.5% FSD

Range:
All ranges to customer specification

Mounting Styles:
1301T - Direct Bottom
1302T - Surface Bottom
1306T - Front Flange 3 Hole
1308T - Front Flange Clamp.

Specifications

Connection:

Brass or 316 Stainless Steel

Measuring Element:

Beryllium Copper or 316 Stainless Steel

Movement:

Brass

Dial:

White Aluminum with black markings

Pointer:

Black Oxidized Aluminum

Case & Bezel:

304 St. St. Bayonet locking bezel or black coated steel

Window:

Toughened Glass, or Acrylic window

Gasket Seal:

Food Quality Rubber

Ranges:

Ratio: 3.5:1 for 270° scale 5:1 for 180° scale

Maximum Pressure:

1000bar or 1500 lbf/in²

Connections:

3/8", 1/2" bsp other threads to order