

# CLARiSUITE™



## Integrated Coding Software

Networking

Label design



Database

Touchscreen

# CLARiSUITE™

## Integrated Coding Software

CLARiSUITE is a suite of software products that work together for the purpose of designing, managing and distributing data to be printed by the ICE, Videojet and Zebra range of printers.

The CLARiSUITE software components include:

CLARiSOFT™  
Label design software

CLARiNET™  
Networking software

CLARiSOFT DB™  
Database structure to  
manage printer data

CLARiTY™  
Operator touchscreen





# CLARiSOFT

## Label design software

CLARiSOFT is a label design software program. It uses a Windows GUI (graphical user interface) to allow the user to create label design templates which may be printed by the ICE, Videojet and Zebra machines.

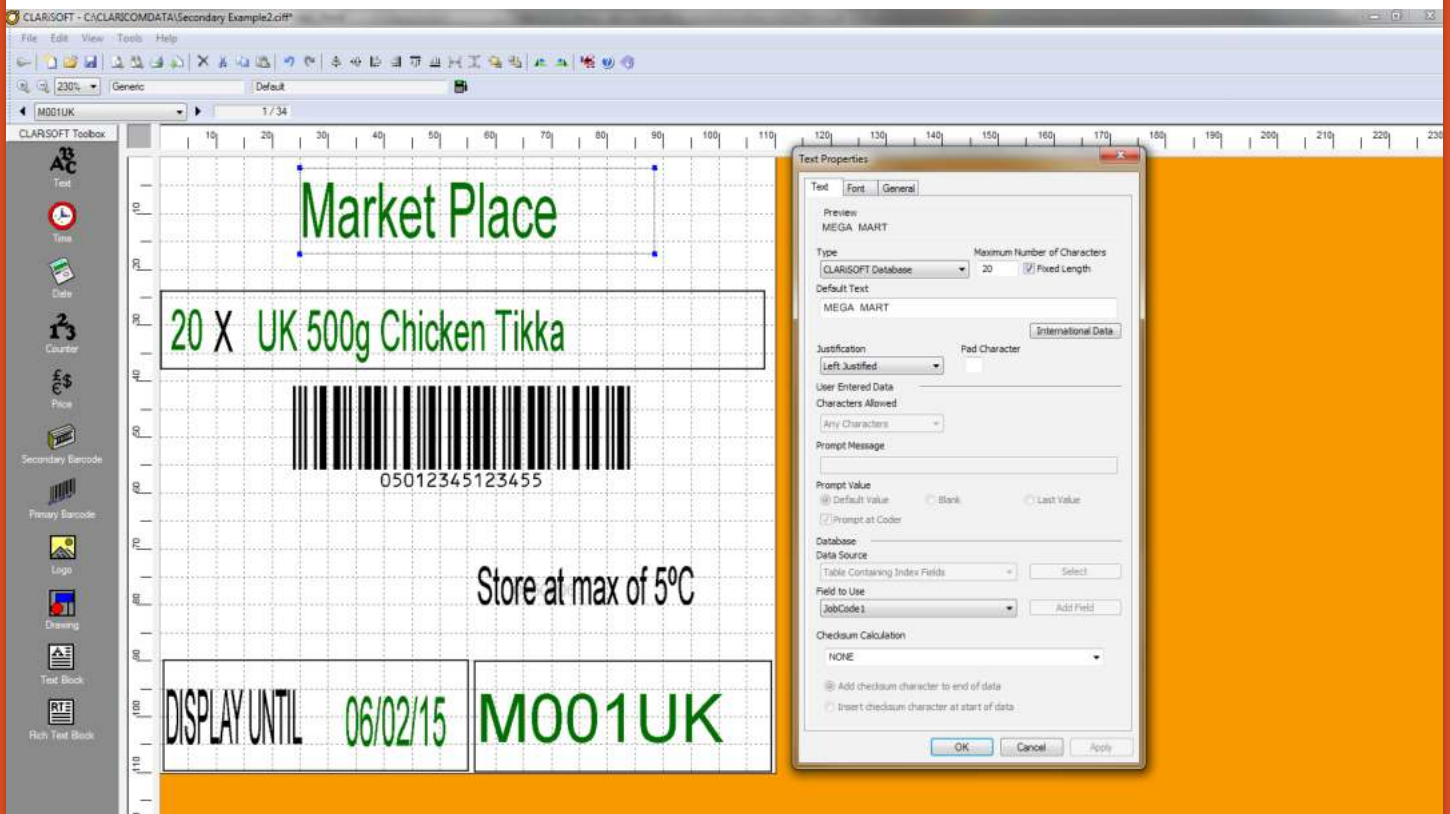
Designing a professional label is straightforward with the design template, which allows the placement of fields on to a defined print area. Using the drag and drop editing tool, the user can insert multiple field types including text, date and time, barcodes, graphics and shapes.

Highlighting allergen information in the ingredients list is simple by selecting bold, underline or italicise to comply with EU allergen labelling regulations. The powerful print preview function allows a final review of the finished design before printing, reducing time and waste.

The information contained within each field type may be fixed, user entered at the CLARiTY interface, merged from another field, calculated from the printer RTC (real time clock), or sourced from outside of CLARiSOFT. This source may be the CLARiSOFT DB database, or another data source provided by the user.

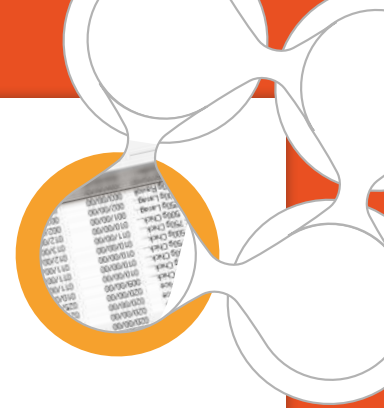
Templates created within CLARiSOFT are saved as a unique file type, known as CIFF (coder independent format file). The CIFF file also contains other information in addition to the printed data, for example date of creation and which version of CLARiSOFT was used to create the file.

The CIFF file may be stored permanently within the printer if desired. Transportation from the PC to the printer may be via serial connection (RS232), Ethernet connection, or via a USB memory device.



# CLARiSOFT DB

## Database structure to manage printer data



CLARiSOFT DB is a database structure provided within the CLARiSUITE product to allow the user to manage printed data in a friendly environment. CLARiSOFT DB presents each CIFF data record in a form view and allows additional fields to be added easily.

The software also provides some data checking facilities, for example check digits on primary and secondary barcodes are calculated and checked.

UniqueJobCode	JobCode1	JobCode2	JobCode3	Description	SelByOffset	UseByOffset	CIFF Ref	PrimaryPackCode
D001UK	Mega Market	Rice	250g	UK 250g Rice	020/00/00	025/00/00	Inner Primary Example1.ciff	0501234678909
D002UK	Mega Market	Rice	500g	UK 500g Rice	020/00/00	025/00/00	Inner Primary Example1.ciff	0504961237894
D003UK	Mega Market	Rice	250g	UK 250g Rice	020/00/00	025/00/00	Inner Primary Example1.ciff	0501234678909
D004UK	Mega Market	Rice	500g	UK 500g Rice	020/00/00	025/00/00	Inner Primary Example1.ciff	0504961237894
M001UK	Market Place	Chicken Tikka	500g	UK 500g Chick...	009/00/00	010/00/00	Inner Primary Example2.ciff	0509976543210
M002UK	Market Place	Chicken Tikka	750g	UK 750g Chick...	010/00/00	011/00/00	Inner Primary Example2.ciff	0501236547890
M003UK	Market Place	Chicken Tikka	500g	UK 500g Chick...	010/00/00	011/00/00	Inner Primary Example2.ciff	0509976543210
M004UK	Market Place	Chicken Tikka	750g	UK 750g Chick...	010/00/00	011/00/00	Inner Primary Example2.ciff	0501236547890
M005UK	Market Place	Chicken Korma	500g	UK 500g Chick...	010/00/00	012/00/00	Inner Primary Example2.ciff	0501236547890
M006UK	Market Place	Chicken Korma	750g	UK 750g Chick...	011/00/00	013/00/00	Inner Primary Example2.ciff	0503124659794
M007UK	Market Place	Chicken Korma	500g	UK 500g Chick...	010/00/00	012/00/00	Inner Primary Example2.ciff	0501236547890
S001UK	Mega Market	Lasagne	250g	UK 250g Lasag...	001/00/00	002/00/00	Inner Primary Example2.ciff	5079898981236
S002UK	Mega Market	Lasagne	500g	UK 500g Lasag...	002/00/00	003/00/00	Inner Primary Example2.ciff	507777771237
S003UK	Mega Market	Ravioli	250g	UK 250g Ravioli	003/00/00	004/00/00	Inner Primary Example2.ciff	507666661236

# CLARiNET

## Networking software

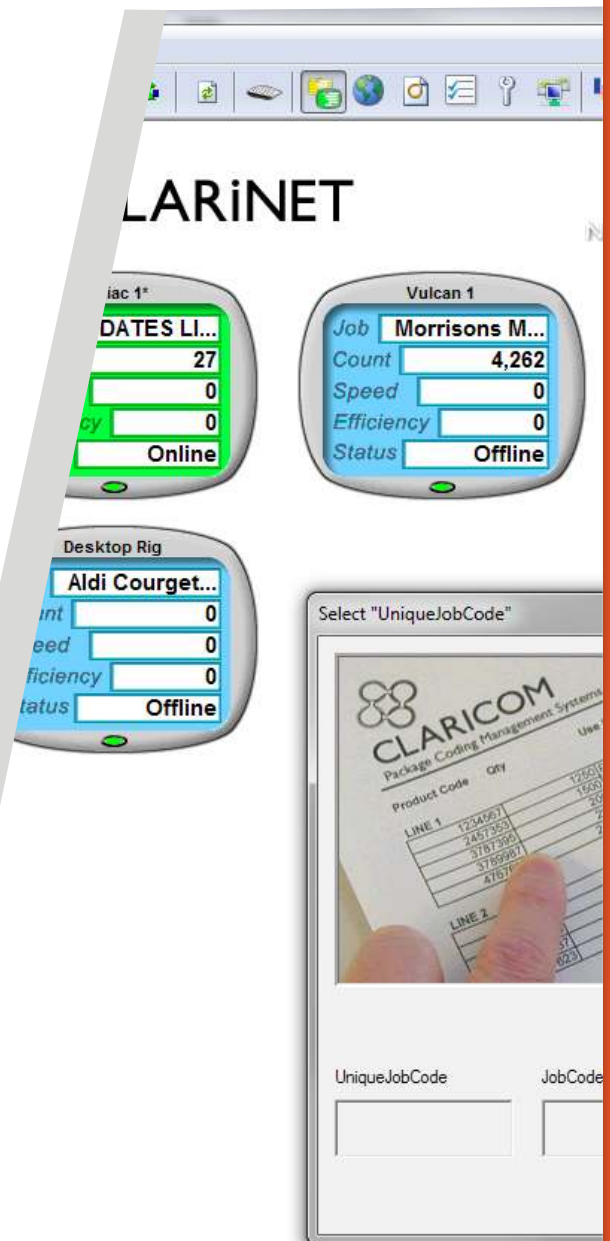
CLARiNET allows a number of ICE, Videojet and Zebra printers to be connected to a central data source via a LAN (local area network). The maximum number of printers which may be connected to a single CLARiNET system is 99.

Connecting the printers in this way enables the printed data to be centralised, providing a single data source for all coding machines in a factory, thereby reducing both the risk of coding errors and simplifying the process of data management.

With CLARiNET, the printers can be placed in to groups, allowing simultaneous data transfer to a number of printers. Typically these printers would exist on the same production line.

CLARiNET permits data to be shared by printers which use different print technologies and have different capabilities, for example print speeds, print resolution and print areas may differ. The templates designed within CLARiSOFT deal with these differences, whilst CLARiNET simply connects the printers to the data source and the CIFFs.

CLARiNET provides a dashboard view of printer efficiency, performance and line stoppages by acquiring data from the printers. This can be recorded into production and audit logs and enable qualitative analysis. An optional intranet view can provide the business with live performance information.



## The key benefits of CLARiSUITE

- › Provides access to all of the unique and useful features of the CLARiTY interface used on all ICE coders and many Videojet and Zebra machines.
- › Has the ability to integrate into existing factory systems and data networks.

# CLARiTY

## Operator touchscreen



CLARiTY refers to the operator controller situated nearby to the printer. The colour touchscreen allows for simple operation and minimal downtime of ICE coders. The operator is able to set up the line quickly and easily with streamlined message selection and a helpful wizard tool.

CLARiTY gives the operator visibility to identify the ribbon usage and the predicted replacement time to assist with planning changeover and reducing downtime. On-board diagnostics can quickly identify faults so you can fix them and get the line back up and running fast.



Simple job selection list



Easily configure date concessions on screen



CIFF job previews

- › Allows the use of an existing database to provide printed data to factory coding machines.
- › Allows factory coders to be connected to a central data source via standard CAT5 cabling.
- › Allows bi-directional data management i.e. printed data may be sent to machines and performance data may be acquired.
- › Requires no unique cabling or IT requirements.

# CLARiSUITE

## FAQs

### Can I connect other software to CLARiSUITE?

Yes, CLARiSUITE has ODBC capability (open database connectivity). This means that data may be sourced from a variety of compatible platforms, including Access, SQL, Excel etc.

The CIFF template is still required, however data for some of the fields may be populated from one or more data sources.

CLARiNET has an API (application programming interface). This allows software developers to interact with CLARiNET from their own application. CLARiNET also has an OPC server (open platform communication), this allows CLARiNET to connect directly to factory automation systems, allowing control of printed data and logged information to be managed directly. The OPC server operates as a service, meaning the CLARiNET application does not need to be running for the server to be effective.

### Can CLARiSUITE be used with non-ICE or Videojet products?

Yes, there are other drivers available, although support for these may be limited since it is dependent on documentation and support from other manufacturers. The Zebra printer is supported as standard since its protocol is widely documented and the Zebra product is in common use.

### What hardware do I need to use CLARiSUITE?

CLARiSUITE only requires a good specification PC, with a mouse and keyboard. For CLARiNET to be used, a NIC (network interface card), and connection to the LAN used by the printers is necessary.

