



GLENTWORTH
Masters in Metal

GLENTWORTH PRECISION ENGINEERING

This presentation has been drafted to give you a brief insight as to the product range, Capabilities and competencies while the website is being updated

- Glentworth Precision part of the Glentworth Group are a small but well established Berkshire based supplier of machined parts and assemblies. Delivering quality products into various sectors of the industry. Predominantly Aerospace actuation, Fuel Systems, Oil, Gas, medical and filtration
- During this period of uncertainty Glentworth are working to ensure that when business is back to some normality they have positioned them selves to offer the service they are renowned for. On time delivery and quality.
- We are currently reorganising and restructuring the working environment, current ongoing work to improve our assembly areas, tooling storage and quality departments.





GLENTWORTH
Masters in Metal

AEROSPACE ASSEMBLIES

- Glentworth have supplied fully tested Aerospace Actuation Universal, Plunging and Articulating joints, steady bearing assemblies and also assemblies that are attached directly to steel and composite shafts.
- Assemblies include.
- Airbus
A220,A330,A340,A350,A380,A400M
- Boeing 787
- Fokker F100
- Casa Cn235, and 295.
- Incorporating Orbital Riveting, Electron Beam welding, peening, wire thread insert, crimping. Laser part marking
- Quality requirements for most assemblies are to check And record for Backlash, End float and articulation.
-





GLENTWORTH
Masters in Metal

MANUFACTURING

Gear cutting,
Conventional and CNC milling,
Conventional Turning,
CNC Turn/ Gear cutting
Honing,
Aerospace and commercial Assembly
Laser part marking
Quality /Inspection
CMM measuring equipment
Mico-Vu optical measurement technology
Standard Gauging and measurement



Lower tier managed Processes and subcontract machining

Coatings and wet processes , Cadmium, Silver, Electroless Nickle, Anodising, Hard Anodising, Aerospace Grade Paint.
Heat Treatment, Hardening of Stainless steels, Plasma Nitride
Metal cutting Deep hole drilling, Crown Spline machining

PLANT LIST

Milling

- 2 x Haas VF-4SS Vertical Milling Machine X- 1270mm Y- 508mm Z -635mm 4th Axis
- 1 x Haas VF-4 Vertical Milling Machine X- 1270mm Y- 508mm Z -635mm 4th Axis
- 1 x Haas VF-2 Vertical Milling Machine X- 762mm Y- 406mm Z -508mm 4th Axis
- 2 x Haas Mini Mills Vertical Milling Machine X- 406mm Y- 305mm Z -254mm Indexers
- 2 x Bridgeport EZ Trak Vertical Milling Machine X- 750mm Y- 300mm Z -130mm

Turning

- 2 x Mazak Nexus 200MY CNC Lathe 8" Chuck Driven Tooling
- 2 x Mazak Nexus 200MS CNC Lathe 8" Chuck Driven Tooling
- 1 x Mazak QT10M CNC Lathe 6" Chuck 1500mm Bar Feed
- 1 x Mazak Nexus 100- II CNC Lathe 6" Chuck 1500mm Bar Feed
- 2 x Haas ST-10 CNC Lathe 6" Chuck
- 1 x Harrison Alpha 400T NC Lathe 10" Chuck

Gear Cutting

- 1 x Sykes V10B Gear Cutting Machine





GLENTWORTH
Masters in Metal

QUALITY ASSURANCE

Certificate GB1285873
Certification Structure: Single Site

The management system of

Glentworth Precision Engineering (UK) Ltd
Central Office: Molly Millars Bridge, Wokingham, RG41 2WY, UK
has been assessed and certified as meeting the requirements of

AS 9100D / ISO 9001:2015

SGS United Kingdom Ltd performed this in accordance with the requirements of BS EN 9100:2018 (technically equivalent to AS9100D) and ISO 9001:2015 and is assessed in accordance with EN 9100-01:2013 and are accredited under the IATF Scheme.

The scope of registration is as follows:
Provision of precision engineering services to the aerospace and other industries.

This certificate is valid from 11 June 2018 until 10 June 2021 and remains valid subject to satisfactory surveillance audits. Re certification audit due a minimum of 90 days before the expiration date. Issue 6. Re-issue Date: 13 May 2019. Certified since 11 June 2012.

Authorized by



H. Clark
Certification and Business Enhancement Business Manager
SGS United Kingdom Ltd
Rosemead Business Park, Ebbw Vale, Gwent, NP23 5SN, UK
t +44 (0)1131 380-0000 f +44 (0)1495 300-6889 www.sgsgroup.com

HC SGS ASD3900 0016

Page 1 of 1



This document is issued by the Company subject to the General Conditions of Certification Services available at www.sgsgroup.com, and conforms the conditions in force by the Institute of Applied, Manufacturing and Professional Surveyors (IAPMS). The authority of this document may be verified at the IAPMS website. This document is the property of SGS and its use is restricted to the client. Any reproduction or distribution of this document without the prior written permission of SGS is prohibited. The IATF logo is the property of IATF.

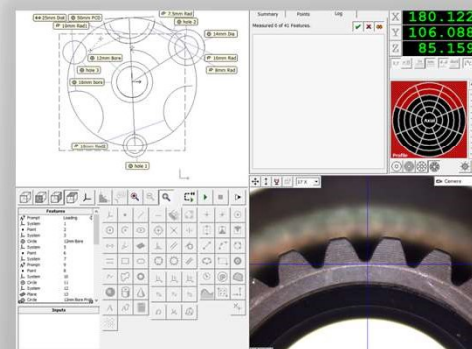
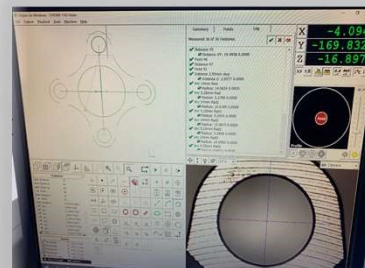


aerospace sector certification scheme



Inspection Equipment

- 1 x Mitutoyo CNC-CMM Crysta Apex S 574
- 1 x Mitutoyo CNC BH 506
- 1 x Micro-Vu Vertex 251 Optical Measuring Machine - With Touch Probe kit (CMM)
- 1 x Micro-Vu Vertex 311 Optical Measuring Machine - With Touch Probe Kit (CMM)
- 1 x Baty Shadowmaster R550 Shadowgraph Machine
- 1 x Mitutoyo Surface Measuring Machine - SJ410
- 1 x Mitutoyo Surface Measuring Machine - SJ201P





GLENTWORTH
Masters in Metal

COMPARISONS OF SCALE AND SCOPE

- Machining Capacity for both CNC Milling and Turning is as shown on slide 3,
- Batch quantities from 1off to 5000off

