

# COMMERCIAL PLATFORM LIFT FROM INVALIDIFTS





Invalifts has recently been acquired by the Aritco Group AB; one of the world's leading manufacturers of platform lifts. For our customers, this means we can offer the backing of a huge group with all our products, it also means improved customer support, and the addition of exciting new products to our range.

One of the most versatile new products added to our range is the 'Commercial Platform Lift.' This platform lift has been designed for schools, restaurants, offices, public and commercial buildings, offering a high quality of finish, including an anodized aluminium platform console, braille and tactile push button, along with an ergonomically designed aluminium or stainless steel handrail on the carriage. The shaft panels and landing doors can be powder coated with a choice of 1625 different RAL colours and the option to include glazing into the shaft enclosure. We can take the level of finishes from the high standard finish to an exceptional level of sophistication to suit every application.

Due to continuous product development, all specifications included in this catalogue are subject to change without prior notice. Reservations are made regarding misprints and articles being out of stock.

## CONTENT

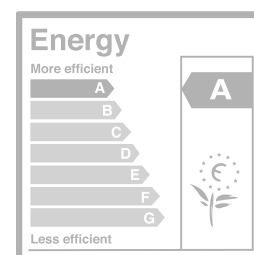
Product summary.....	3
Lift colour .....	4
Carrier .....	6
Floor .....	7
Control panel .....	8
Doors.....	10
Door control .....	12
Door machinery .....	14
Communication .....	15
Drive system .....	16



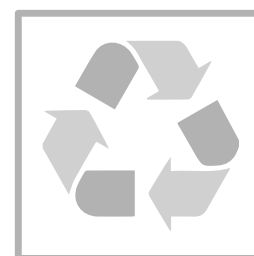
# PRODUCT SUMMARY

The Commercial Platform lift is our bestselling platform lift. The lift is designed to meet all requirements for quality, safety and service life. It is a perfect fit for tough and demanding environments such as schools, shops, commercial and residential buildings.

<b>Type of lift :</b>	Platform lift intended for use in public & commercial environment.
<b>Technical compliance:</b>	European Machine directive 2006/42/ EC European standard EN 81-41
<b>Drive system:</b>	Patented screw/nut system
<b>Rated speed (max):</b>	0.15m/s
<b>Travel height:</b>	250 -13,000* mm
<b>Number of stops:</b>	Max. 6 stops per lift
<b>Number of doors:</b>	Max. 6 doors per lift
<b>Number of doors per floor:</b>	Max. 2 doors per floor
<b>Pit:</b>	50mm or optional ramp (no pit required with ramp)
<b>Entry:</b>	One, two or three sides, excluding drive side
<b>Top height:</b>	Minimum 2240mm (1100-1600mm with half height gate)
<b>Platform control:</b>	"Hold to run", the destination button must be kept pressed down during the whole journey
<b>Landing control (on door):</b>	One-touch call
<b>Environment:</b>	Indoor
<b>Emergency lowering:</b>	Battery operated emergency lowering
<b>Control voltage:</b>	24V
<b>Motor:</b>	2.2kW
<b>Power supply:</b>	1-phase 230V 50 Hz/9A / 16A 3-phase 400V 50 Hz/5.2A / 16A
<b>Rated load:</b>	250, 410 or 500kg (depending on platform size)



Energy Performance Certificate (EPC)



Recycling

\*Travel height when having a half door is maximum 3000 mm

# LIFT COLOUR

Our commercial platform lift can be painted in any RAL colour from standard range.



### Standard:

Whole lift painted in standard colour RAL 9016 (Traffic white) except for the panels under the destination panel which are painted in RAL 7042 (Grey).



### Full colour option:

Whole lift painted in optional colour (Incl. shaft, doors and the panels under the destination panel.)



### Lift partially painted in different colours:

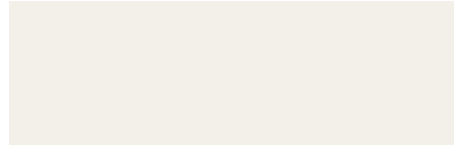
- Lift walls/Shaft in one colour.
- All door blades in one colour.
- All door frames in one colour (Also includes the door faceplate.)
- Panels under the destination panel in one colour.
- One of the above choices or a combination of them.



# COMMON COLOUR CHART



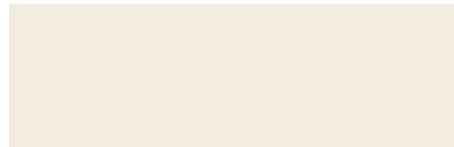
Traffic white - Standard colour  
RAL 9016



Signal white  
RAL 9003



Telegrey4  
RAL 7047



Pure white  
RAL 9010



White aluminium  
RAL 9006



Light ivory  
RAL 1015



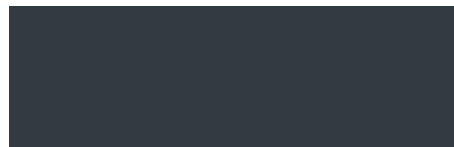
Telegrey 1  
RAL 7045



Traffic red  
RAL 3020



Grey aluminium  
RAL 9007



Anthracite grey  
RAL 7016



Basalt grey  
RAL 7012



Jet black  
RAL 9005

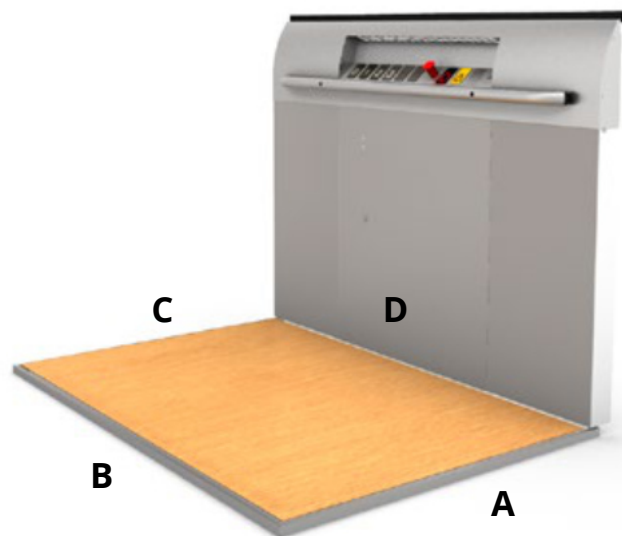
Note that the actual colour of the lift may differ from the colour samples pictured above.

- \* Any RAL colour means in this case any RAL colour from the 213 colour RAL chart K7 classic except the following colours that are not available;  
Luminous colours: RAL 1026, 2005, 2007, 3024, 3026, 6038  
Pearl Colours: RAL 1035, 1036, 2013, 3032, 3033, 4011, 4012, 5025, 5026, 6035, 6036, 7048, 8029, 9022, 9023

# CARRIER

The platform is in its basic execution delivered with a side wall (half height) including the destination panel.

Panels under the control panel are painted in RAL 7042 (grey) as standard, but can be painted in any RAL colour as an option.



A, B, C and D-side of platform.



## FULL HEIGHT WALL

As an option the platform can be delivered with a full height wall (2100mm high) with a mirror. The full height wall is in RAL 7042 (grey) as standard, but can be painted in any RAL colour as an option.

The full height wall is available on the D-side of 1480mm, i.e for platform sizes 900x1480mm, 1000x1480mm and 1100x1480mm.

The full height wall is not available for door heights of less than 2000mm or a half height gate.

## FOLD DOWN SEAT

In solid birch and with chromed brackets. The seat has to be folded back manually after use. Can be ordered as an option.

Size: 320 x 400mm

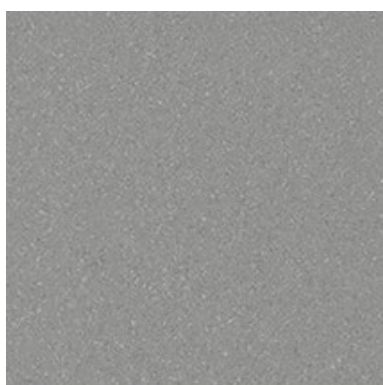


# FLOOR

Choose between the following options for vinyl, rubber and aluminum floorings.

It is also possible to order the lift without a floor covering, which enables you to fit your own floor with a maximum of 3mm thickness.

Note that aluminum flooring is not available for platform size 900 x 1040mm.



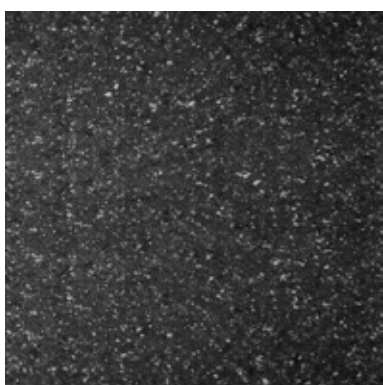
**Beige Vinyl**  
Standard



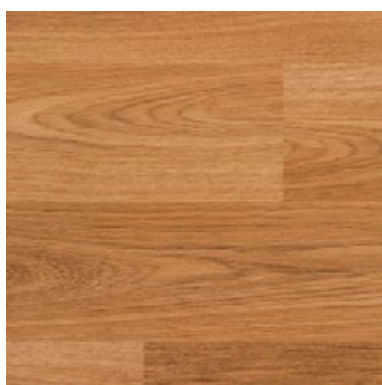
**Blue Vinyl**  
Standard



**Sand Vinyl**  
Standard



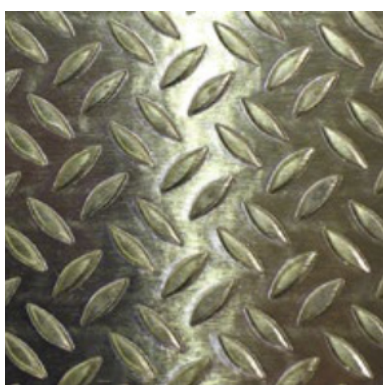
**Grey Vinyl**  
Standard



**European Oak Vinyl**  
Standard



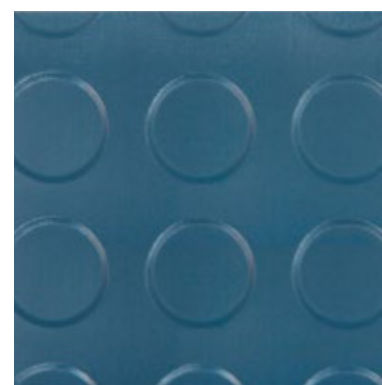
**Classic Beech Vinyl**  
Standard



**Aluminum**  
Optional extra



**Checker Stud Black Rubber**  
Optional extra



**Checker Stud Blue Rubber**  
Optional extra

# CONTROL PANEL

## DESTINATION BUTTONS

Destination buttons are designed according to EN 81-41 regulations. The height between platform floor and the centreline of the buttons is between 900-1100 mm.

Standard buttons are engraved with braille. The buttons are of polycarbonate plastic. Following buttons are available: -2, -1, 0, 1, 2, 3, 4, 5, 6, B, BG, BV, G, K, V, P, U, E. Individual special characters can also be ordered as an option. Maximum 2 characters per button. These buttons will also be engraved.



The destination panel is always placed on the machine side (D-side) of the platform.

It contains the destination buttons, emergency stop, alarm button, autodialer (option), landing indicator (option), max weight and number of persons allowed.

All text and logos are screen printed to ensure good quality. The location of the platform buttons and the handrail are according to E81-41.

- Anodized aluminium - standard
- Stainless steel - option



## KEY SWITCH ON PLATFORM

Key switch placed on destination panel. The key switch locks the platform functions and prohibits unauthorized use. One key switch per platform can be provided. The key switch can be in series to all destination buttons or the key switch is connected to one destination button.



Telemecanique



**FACEPLATE PANEL**

The faceplate panel is painted in grey which has an Aluminum look. To prevent trapping, a safety bar is mounted behind the faceplate panel which isolates the safety circuit when pressed down.

**LIGHT**

LED lights are installed above the destination panel.

**EMERGENCY STOP BUTTON**

Button in "mushroom" type for emergency situations. Is always included as standard.

**ALARM BUTTON**

A standard alarm button is always delivered with the lift. When it is pressed a buzzer sounds. This is only a signal to the user that the button is pressed. The alarm button may be connected to an external alarm sounder or an autodialer.



**LANDING INDICATOR**

Digital display positioned on the destination panel. It shows which floor the lift is on at the moment. The indicator can also be fitted with a voice annunciation (Option) Basement, Ground Floor, Floor 1 – 6. The landing indicator can also show information from the system (Option).

- Warning if the batteries are low.
- A "bell" symbol when the alarm button has been pressed.
- Number of starts and total run time since installation or since last reset.
- A "weight" symbol will appear if the lift is overloaded.
- If connected to the buildings fire alarm a "Fire" symbol will be shown when alarm is activated.

Can be ordered as an option.

**EXTERNAL ALARM SOUNDER**

External alarm sounder mounted outside the lift. It is connected to the alarm button and when the alarm button is pressed the external alarm sounder will give a loud signal outside the lift to attract attention in case of emergency. Can be ordered as an option.

**HANDRAIL**

A handrail is mandatory according to EN81-41 and delivered as a standard. Height of handrail is 875 mm from the platform floor. Handrail diameter is 36 mm. The ends of the handrail are closed and returned towards the platform.

- Anodized aluminum (standard)
- Stainless steel (option)





# DOORS

The lift doors installed at each landing are made of galvanized steel and laminated and toughened glass, 8mm thick.



**Large glass door**



**Half height gate**

All doors are painted in RAL 9016 (Traffic white) but can be painted in any RAL colour as an option. The door frame and door blade can be painted in same colour or the frame in one colour and the blade in another colour. For the same lift all doors must be painted in the same colour.

A glazed area according to EN81-41 is standard for all doors with clear glass (JT0). Optional extras include tinted (JT16), dark tinted (JT5) or frosted glass (JT23).

The profiles around the glass are made of aluminium and can be painted in any RAL colour (Option).

If the door blade is in RAL 9016 (Traffic white) the profiles can be painted in the same colour as an option. If the door blade is painted in another RAL colour, the profiles will be in aluminium as standard, can be painted in the same RAL colour as the door blade as an option. Note that aluminium profiles are standard and painted profiles are an option.

All doors can be left or right hinged. Doors are always delivered with door frame. It is not possible to order the door or the frame separately.

**LARGE GLASS DOOR**

Large glass door with one glass panel.

**Opening widths:** 800, 900, 1000mm

**Opening heights:** 1800, 1900, 2000, 2100mm

The actual height of the door is 40mm higher since a plate that covers the joint between the door and the frame is mounted on the door.

**Glass vision panel:** 612x1472mm (800mm wide door), 712x1472mm (900mm wide door)

**Standard:** Door blade and door frame in RAL 9016 (Traffic white). Glass panel: clear glass (JT0)

**Options:** Door blade and/or door frame in other RAL colour. Glass window: tinted (JT16), dark tinted (JT5), frosted (JT23)

Door opening width	Door opening height	Available on B-side	Available on A/C-side
800	1800 / 1900 2000 / 2300	1040	900
900	1800 / 1900 2000 / 2100 2300 <sup>(2)</sup>	1280 1480	1000 1100
1000 <sup>(1)</sup>	2000 / 2100	1280 / 1480 1580	1100

(mm)

<sup>(2)</sup> 2300mm height doors are available on 1000 and 1100mm sides. Not available on 1280 and 1480 sides.

**HALF HEIGHT GATE WITH GLASS**

Half height gate with one glass panel. If you require an open shaft or if the head space is low, the use of a half height door may be a good solution. According to EN81-41 the half height gate is only allowed for lifts with a travel height up to 3 metres. The half height gate cannot be combined with EI60 fire & smoke proof doors.

Note that when using a half height gate 1100 - 1600mm the shaft and the half height gate will have the same height. It is not possible to have a higher shaft than the half height gate.

**Opening widths:** 800, 900mm

**Opening heights:** 1100 - 1600mm

**Glass window (vision):** 612x670mm (800mm wide door), 712x670mm (900mm wide door)

**Standard:** Gate blade and frame in RAL 9016 (Traffic white). Glass panel: clear glass

**Options:** Gate blade and /or frame in other RAL colour. Glass panel: tinted, dark tinted and frosted.

Gate opening width	Gate opening height	Available for B-side	Available for A/C-side
800	1100-1600 <sup>(1)</sup>	1040	900
900	1100-1600 <sup>(1)</sup>	1280 1480	1000 1100

<sup>(1)</sup> Custom height between 1101-1600

(mm)

Note: For platform size 900x1040mm, the electrical cabinet is placed on top of the mast. The machine side is 200mm higher than the rest of the shaft.

A half height gate can be used in the following cases:

- 1100mm high half height gate: When you have an open shaft and a top height of 1100mm (even shaft).
- 1101-1600mm high half height gate: When you have a low travel height with a standard door on the bottom floor and a custom height half height gate is needed to get an even shaft  
When you have a higher travel height, but a standard door on second top floor and a custom height half gate is needed to get an even shaft.
- It is not possible to have a lower half height gate than the top height of the shaft – this means that you can't have a 1100mm height gate on a lift with a shaft higher than for example 1400 mm.
- Note that it is not possible to have two half height gates on the same lift.

**Clear glass**

JT0

**Tinted glass**

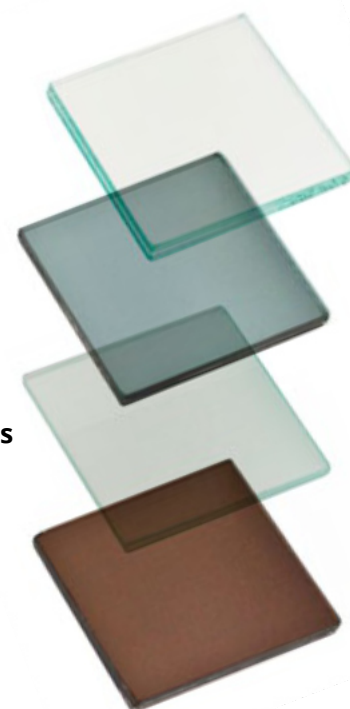
JT16

**Frosted glass**

JT23

**Dark tinted glass**

JT5





# DOOR CONTROL

The door control is either placed on the door frame of each landing door and/or remote from the lift for external control.

## DOOR CONTROL ON DOOR FRAME

Door control placed on the door frame of the lift. For our platform lift there is always a place on the door frame for the faceplate.

## CALL BUTTON

The call button comes with a background lit frame which indicates the status of the lift.

- Green light indicates that the lift is at your floor. Lit only on the floor where the platform is at the moment.
- Red light indicates that the lift is occupied.
- The flashing light indicates that the safety circuit is broken, e.g. that the emergency button is pressed, the door is open on another floor for more than one minute, the door is blocked or the safety bar is pressed down. The flashing light can also be activated by a smoke alarm, more information is then available in the service memory.

The same call button is used when the door control is placed on the door frame, remotely or as a radio controlled call button.





**DOOR FACEPLATE**

The door faceplate can be placed directly on the door frame or remotely in a call station box. The standard door faceplate is painted in grey, anodic color Natura which has an aluminum look. As an option it can be delivered in stainless steel.

The door faceplate can be fitted with:

- Call button
- Key switch with Telemecanique / School locking



**KEY SWITCH (SCHOOL LOCKING)**

Instead of having a standard call button on the door faceplate you can have a key switch. You then need to have the key to be able to call for the lift and to access the lift. Includes school locking function which automatically locks the door 10 seconds after it is closed.

Two brands to choose from:

- EUR, only the housing is provided, we do not provide the locking cylinder.
- Telemecanique



**EXTERNAL DOOR CONTROL - PLACED REMOTELY FROM LIFT**

Door control placed away from the lift in an external call station box connected to the lift via a cable or wireless radio controlled call button.

**EXTERNAL CALL STATION BOX**

The door faceplate can be placed remote from the lift and will then be placed in an external call station box. The colour of the external call station box is RAL 9016 (Traffic white). The box can either be surface mounted on a wall or flush so that you only see the faceplate. The external call station box can be ordered as an option.

The standard length of the cable delivered with the remote call station is 1.5m, as an option it can be extended up to 10m long.

Size flush mount: 82x150x50 mm

Size wall mount: 95x185x50 mm



**RADIO CONTROLLED CALL BUTTON**

The radio controlled call button, housed in a white plastic box, gives the customer the freedom to locate the call button wherever they would like within 10 meters from the lift. The radio controlled call button runs on batteries and provides remote controlled access to the lift.

The radio controlled call button doesn't indicate the status of the lift.

Can be ordered as an option.



# DOOR MACHINERY

The landing doors are always delivered with either a door opener or a door closer.

Depending on the door type you can either have it mounted internally (within the door frame so that it's hidden from the outside) or externally (in a box visible from the outside).

**Door opener:** Opens and closes the door automatically. Door open time and the opening speed are adjustable.

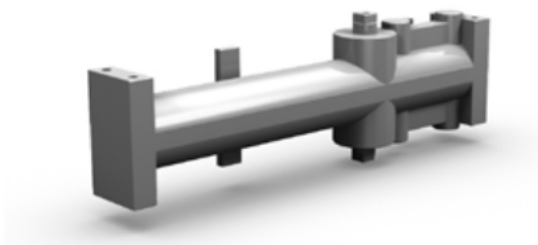
**Door closer:** Door is opened manually. The door is closed automatically after a preset time.

All openers and closers are available for both left and right hinged doors. When having two doors on the same landing, both doors will be opened at the same time when having automatic door openers.

Door type	Internal door closer	External door closer	External door opener
Large glass door Standard	•	•	•
Half height glass door	•		•
EI60 – fire & smoke proof door	•		•

## INTERNAL DOOR CLOSER

Closes the door automatically. It is built into the door frame and is hidden from the outside. Includes function to keep door open until the user manually closes the door. Standard for all doors.



## EXTERNAL DOOR OPENER

Opens and closes the door automatically after a preset time. Can be ordered as option. Cover and sides painted in RAL 9016 (Traffic white) as standard. If the door blade is painted in another color, the cover will be painted in the same color. The sides will still be in RAL 9016 (Traffic white).



## EXTERNAL DOOR CLOSER

Closes the door automatically after a preset time. Can be ordered as an option.



## HOLD OPEN ARM

Keeps the door open until the user manually closes the door. Can be combined with external door closer only. Can be ordered as an option.



# COMMUNICATION

Two way communication is mandatory according to EN81-41. Choose from one of the following options or install your own phone.

## AUTODIALLER

Equipment for emergency calls. Integrated on the destination panel. Dials automatically when the alarm button is pressed. When unanswered after a predefined time, the call is automatically forwarded to the next number.

The autodialler can be equipped with a GSM module (only 2G). Customer to supply SIM card.

## PHONE

The telephone works as a standard telephone but is intended for emergency calls. The phone is mounted on the platform panel. Equipped with redial memory, mute button and a lamp indicator for on/off. Can be equipped with a GSM module. Customer to supply SIM card.



# DRIVE SYSTEM

## BATTERY DISCHARGE PROTECTION

The battery guard protects the batteries from damage and ensures that there is enough power so that you can run the lift in case the power to the lift is cut. It ensures that the lift is turned off when the power of the batteries reaches 22V. This means that even if the power on site is turned off the batteries in the lift will not fully discharge and you can still run the lift. The battery guard can be ordered as an option.

## PHASE SEQUENCE RELAY

Extra protection ensures that the lift does not run in the wrong direction when the phases are connected incorrectly. Option only for 3-phase lifts.

## SOFT START

It provides a smoother start when pressing a destination button. It is not available for 1-phase lifts, as they come with a frequency control as standard which includes both soft start and stop. For 500kg lifts soft start is included as standard.

## BATTERY OPERATED EMERGENCY LOWERING

All lifts have battery operated emergency lowering as standard. You can lower the platform from inside the lift to an exit floor when there is a power failure. Operated by pressing a platform button or can be run externally from the landing call button (hold to run) or service box.



## POWER SUPPLY

For the lift you have the following options:

### 3-phase 400V 5.2A / 16A

- Standard for all lifts (50Hz)
- Frequency 50 or 60Hz
- Frequency converter, with built-in soft start and stop (option).

### 1-phase 230V 9 A / 16 A

- Option when building doesn't support 400V 3-phase
- Frequency 50 or 60 Hz
- Frequency converter, with built in soft start and stop

## LUBRICATION

The screw must be oiled at regular intervals.

**Manual Lubrication:** A brush fixed to the platform oils the screw when using the lift (tray with lubrication oil to the bottom of the shaft).

**Automatic Lubrication:** Oils the driving screw at regular time intervals, even if the lift is not in use (option). The lubrication frequency is adjustable. Standard for lifts with a travel height above 8000mm. Recommended for lifts that are seldom used or not used regularly to travel from ground to top floor.





Read more at [www.invalifts.com](http://www.invalifts.com)

Follow Us!



6 Falcon Park, Claymore, Tame Valley Ind.Est.  
Tamworth, Staffs B77 5DQ  
Tel: 0845 468 2543  
Email: [sales@invalifts.com](mailto:sales@invalifts.com)