

# The Complete Storage Guide



# We are a design led manufacturer of storage solutions and office furniture

Our reputation has been built over many years through listening to our clients, offering unparalleled levels of service and consistently exceeding expectations. Our company ethos is based on having a friendly approach and on placing an equal level of importance to our suppliers, staff and customers alike, so from concept to creation our team will lead the way forward and demonstrate the true meaning of a working partnership. No matter how large or small the project, we approach it with the same level of dedication and professionalism, working with you and understanding your needs to ensure that our products exceed your expectations in every way.

## Our approach

### A passion for design

The entire workforce share a passion for design which is at the heart of every project we undertake.

Our highly skilled design team, who are used to working with specifiers, architects and dealers alike, are the backbone of the company.

It is through their extensive knowledge of available materials and production techniques that we are able to offer our clients the perfect solution.

### Created by craftsmen

Our experienced and highly skilled engineers pride themselves on having the traditional values so essential in ensuring that the highest levels of craftsmanship are continually maintained on each and every item we produce whatever its scale and complexity.

### Unrivalled levels of service

The team here are dedicated to delivering an unrivalled level of service with attention to detail being at the forefront of every department and every project we undertake.





## Contents

Introduction	2
Mobile shelving	4 - 13
Picture racking	14 - 15
Office storage	16 - 25
HTM-71	26
Library shelving	27 - 29
Ask the experts	30
Environmental commitment	30
Finishes	31

**'We pride ourselves on the quality of our workmanship, service and total commitment to the complete satisfaction of our customers'**



# Mobile shelving - the creation of space

## Why mobile shelving?

With property costs accounting for an ever increasing proportion of overheads, it has become increasingly important over recent years to optimise the utilisation of office space.

Mobile shelving systems allow you to either halve the space required for your shelving or double the storage capacity within the same footprint of traditional shelving.



### Traditional shelving

Traditional static shelving providing 120 linear metres of storage.



### Half the space

Reduce your shelf space, freeing up room for more productive uses of space such as additional desking. Providing 120 linear metres of storage.



### Double the capacity

Double your storage capacity within the same footprint as traditional shelving systems. Provide up to 240 linear metres of storage in the same footprint as traditional shelving – a 100% increase...

**Benefit: up to 50% savings on storage costs**

## Endless possibilities

A mobile shelving system can be tailored to your individual requirements to offer the most cost effective and flexible storage solution available today...

...and with our free six step design process it really could not be simpler.

## Ideal for...

- General office filing and archiving
- Surgery and hospital records
- Library and museum archives
- Schools and colleges
- Solicitors practices
- Retail storage

## A minimum of disruption

Mobile shelving is a surface mounted system requiring no additional building works or fixing to the floor. Installation is noise and dust free and quicker than most other systems.

## Relocation, relocation

The system is 100% relocatable. The modular design ensures that if the system needs to be relocated, there is no need for any additional parts and no additional building works. 100% relocatable means the system is cost efficient and minimises environmental impact.



## Single skin shelving system

Single skin shelving is a cost competitive system utilising the latest manufacturing techniques to blend strength, versatility and a pleasing aesthetic.

Form and Function demanded a product which is simple and economical to install, single skin is ideal for most commercial and light industrial applications, but it is not limited to these, and as a result it is a popular choice for a wide variety of public organisations including: libraries, museums & hospitals.

### Accessories

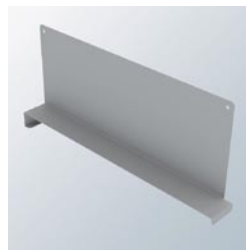
Designed with the customer in mind, a vast range of accessories are available for both single and double skin shelving



Wire divider



Part height divider



Pull out file rail



Tambour door



Full height divider



Fixed file rail



AI hanging drawing storage

## Double skin shelving system

Double skin shelving balances a clean front line, concealed fixings and ease of adjustment to form a premium product. It is ideally suited to the storage of books, valuable documents or files susceptible to damage from protrusions.

It provides clear uninterrupted access to the full width of the shelf and forms a practical storage solution for all types of installations where aesthetics and performance of stored media are important.

### Single and double skin, a system that always makes sense

We manufacture all standard size bays, but can manufacture bays up to a maximum of 3025mm high on all our products. We can also manufacture any depth and width from 125mm upwards.

#### Standard heights

1825 - 2125 - 2425

#### Standard widths

600 - 750 - 900 - 1000  
- 1100 - 1200 - 1250

#### Standard depths

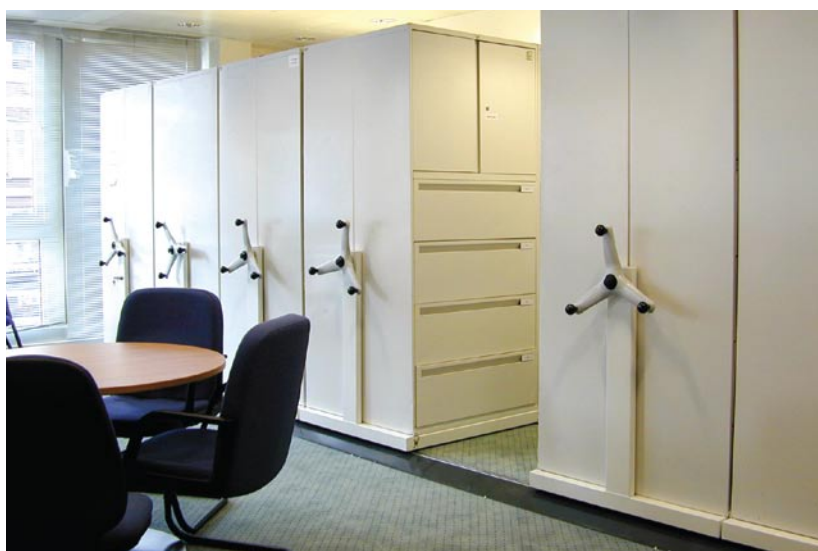
150 - 200 - 250 - 300 - 350  
- 400 - 450 - 500 - 600





## Designed just for you

We will tailor our products to cost effectively meet your specific requirements and maximise your available storage area. All designed to function perfectly in today's complex and demanding office environments.



## The options are endless

We will tailor the mobile shelving system to match your individual storage and space requirements to make a bold statement or blend seamlessly into your existing office décor.



## Better by design

Steel 'C' section track supports the infill floor to provide a level and trip free system.

The mobile shelving system also features anti-tilt devices and safety lock handles to ensure safe operation at all times – complying with all health & safety legislation.



### Hand pull

Up to two bays deep and a total load of no more than 3 tonnes. Pull required is approximately 4.5kg per tonnes of load.



### Mechanically assisted handles

A drive shaft is connected by a chain and sprocket to a manually operated hand wheel.

The standard drive gives a mechanical advantage of 4:1. A force of 0.4kg is required to move each tonne of load.



### Electric motor drive

With a 24vDC motor which can be operated by pressing a key or linked to a computer pc system.





## Chassis mobile shelving system

The Chassis mobile shelving system is a heavy duty mobile storage solution with an active Load Transfer System which enables each bay to easily accommodate up to 500kg.

Ideal for mixed shelving applications, the Chassis mobile storage system is particularly suited to Pallet Racking, Widespan and Cantilever racking.



### Flexibility as standard

The Chassis mobile storage system is ideal for applications where a bespoke storage solution is required.

The wide choice of colours and the unlimited range of interior storage options coupled with a high load bearing capacity, makes the Chassis mobile storage system incredibly flexible and hard wearing.





## Recessed track system

The tracks on the Chassis mobile storage system can be sunk into screed floors for a level surface.

The addition of carpets laid up to the track edges reduces the visual impact of the track system further.

## Providing the perfect solution for you...

The option of bespoke cabinets ensure that whatever your requirement, we will be able to provide you with the perfect solution.

## Versatile

Chassis bases are designed to suit any type of cabinets, shelving or racking system. This enables flexibility in configuration and versatility in design.



## Slide-a-side shelving

Our slide-a-side mobile shelving system maximises the flexibility of the system and has been designed as the ideal solution for corridors and walkways.

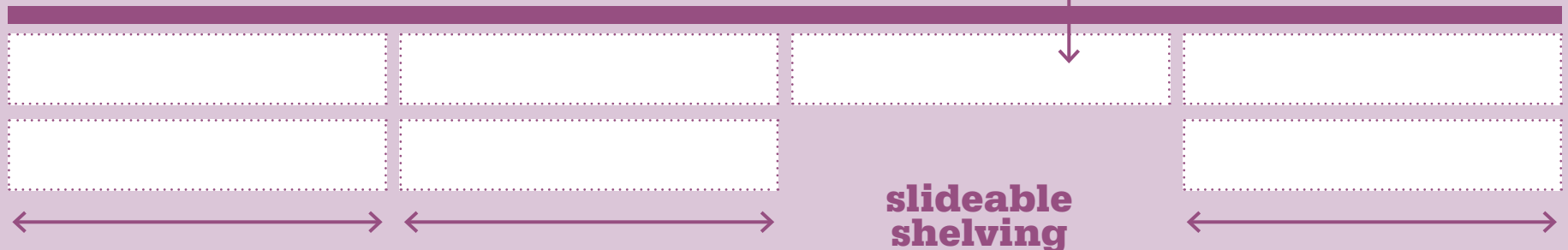
Slide-a-side mobile shelving enables the front bays to be moved from side to side to reveal shelving behind.



**“maximise your storage capabilities by using slide-a-side in walkways and corridors.”**

**Available in a wide range of sizes, finishes and with the option of lockable tambours, slide-a-side can be tailored to your exact specification**

Wall







## Picture racking

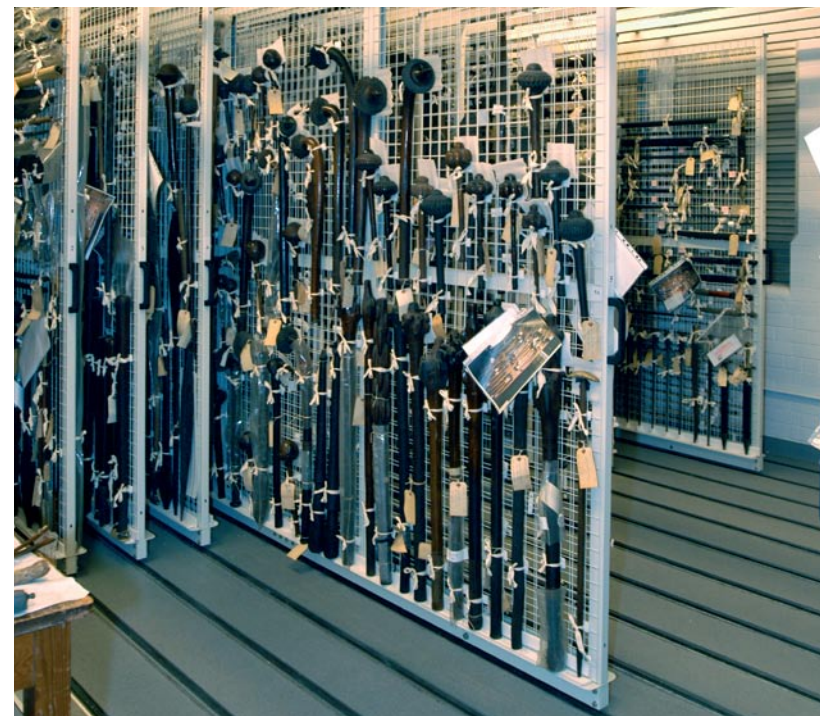
Our range of picture racking is the perfect choice if you wish to store valuable artwork both efficiently and safely.

The high density nature of picture racking ensures that artwork can be stored efficiently, without stacking or touching and yet can be accessed easily and viewed in situ.

### Configured to your exact requirements

We can configure our picture racking to your exact requirements, aiding you to achieve the maximum storage density possible.

We are also able to offer a range of colours for your picture racking so that it can be blended into the existing aesthetics or be used to make a bold statement.







## Suspended from above, or floor mounted... the choice is yours

Our picture racking offers the choice of being either suspended from above or floor mounted.

The option of ceiling suspension racking ensures that your floorspace can be kept clear. A floor mounted system is the perfect choice where there are high ceilings or a lack of suitable structure to affix to.

So whatever your requirement and whatever the volume of pictures you need to store, we can help you to achieve it perfectly...





## Axis rotary storage

Axis has been innovatively designed to meet the needs of office environments today. Offering a higher level of efficiency than traditional filing cabinets, Axis is a high density, fast retrieval rotary filing system.

Halve your retrieval times – the files rotate, the operator stands still.

Rigid steel case, flush fit closure and lockable door for maximum security.

Available in a wide range of colours, with accessories to compliment or replace your existing filing systems.

Installation is faster and dust free and the modular design ensures that the system is 100% relocatable with no need for extra parts or building works.





## Low rotary storage

Axis Low incorporates all of the features and benefits of a rotary storage unit. The low level design is ideal for office environments where higher level storage is inappropriate or undesirable.



## Wave rotary storage

Axis Wave is suitable when a premium storage unit is required.

Axis Wave's design combines all of the great features of the standard unit with a curved front adding contemporary style.



Dealer:

**STORAGE DESIGN LIMITED**

**Primrose Hill**

**Cowbridge**

**South Wales**

**CF71 7DU**

**Tel: 01446 772614**

**Fax: 01446 774770**

**email: [info@storage-design.co.uk](mailto:info@storage-design.co.uk)**

**web 1: [www.storage-design.co.uk](http://www.storage-design.co.uk)**

**web 2: [www.storage-design.ltd.uk](http://www.storage-design.ltd.uk)**