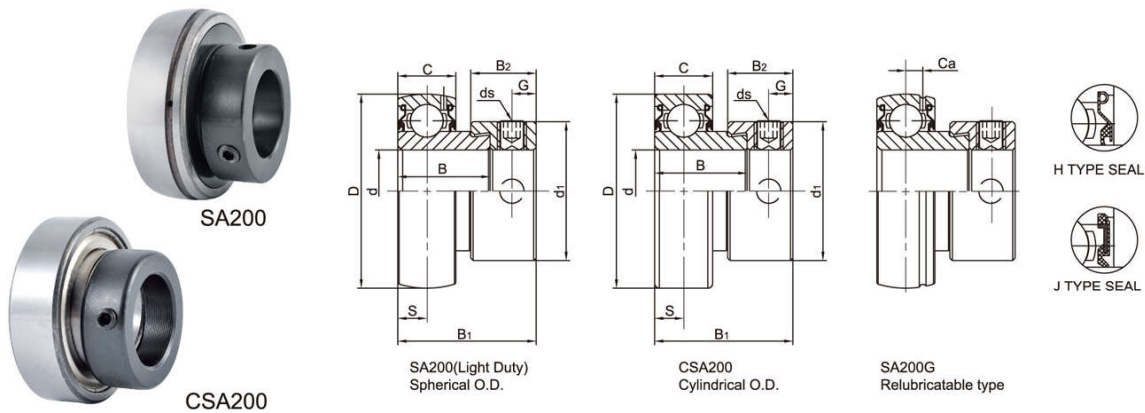


LDK[®] Bearing Inserts

SA/CSA Standard duty, Narrow inner ring, Eccentric locking



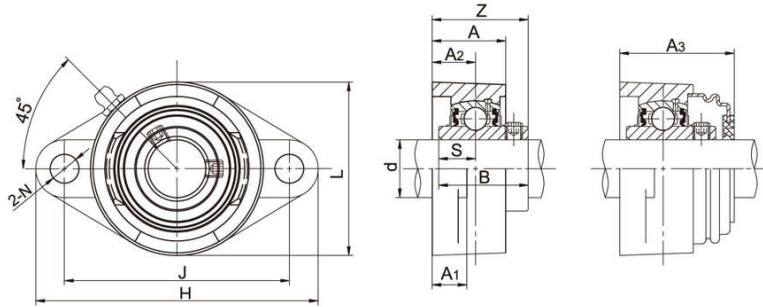
Bearing No.	Shaft Dia		Dimensions(mm)											Basic load ratings (KN)		Weight (kg)
	d (in)	d (mm)	D	B	C	S	B ₁	B ₂	d ₁	G	ds		Ca	Dynamic Cr	Static Cor	
											(mm)	(in.UNF)				
SA 201 201-8	1/2	12	40	19.1	12	6	28.6	13.5	28.6	5	M6x1	1/4-28	3.5	9.55	4.78	0.2
SA 202 202-9 202-10	9/16 5/8	15	40	19.1	12	6	28.6	13.5	28.6	5	M6x1	1/4-28	3.5	9.55	4.78	0.2
SA 203 203-11	11/16	17	40	19.1	12	6	28.6	13.5	28.6	5	M6x1	1/4-28	3.5	9.55	4.78	0.2
SA 204 204-12	3/4	20	47	21.5	14	7	31	13.5	33.3	5	M6x1	1/4-28	4	12.82	6.65	0.21
SA 205 205-13 205-14 205-15 205-16	13/16 7/8 15/16 1	25	52	22	15	7.5	31.5	13.5	38.1	5	M6x1	1/4-28	4.3	14.03	8.05	0.25
SA 206 206-17 206-18 206-19 206-20	1-1/16 1-1/8 1-3/16 1-1/4	30	62	23.8	16	8	35.7	15.9	44.5	6	M6x1	1/4-28	4.9	19.47	11.43	0.39
SA 207 207-20 207-21 207-22 207-23	1-1/4 1-5/16 1-3/8 1-7/16	35	72	25.4	17	8.5	38.9	17.5	55.6	6.5	M8x1	5/16-24	5.5	25.69	15.55	0.6
SA 208 208-24 208-25	1-1/2 1-9/16	40	80	30.2	18	9	43.7	18.3	60.3	6.5	M8x1	5/16-24	6	29.51	18.14	0.77
SA 209 209-26 209-27 209-28	1-5/8 1-11/16 1-3/4	45	85	30.2	19	9.5	43.7	18.3	63.5	6.5	M8x1	5/16-24	6.1	31.85	20.80	0.84
SA 210 210-30 210-31 210-32	1-7/8 1-15/16 2	50	90	30.2	20	10	43.7	18.3	69.9	6.5	M8x1	5/16-24	6.6	34.99	23.70	1.02
SA 211 211-32 211-33 211-34 211-35	2 2-1/16 2-1/8 2-3/16	55	100	32.5	21	10.5	48.4	20.7	76.2	8	M10x1.25	3/8-24	7.2	43.34	29.39	1.37
SA 212 212-36 212-37 212-38 212-39	2-1/4 2-5/16 2-3/8 2-7/16	60	110	37.2	22	11	53.1	22.3	84.2	8	M10x1.25	3/8-24	7.5	47.68	33.43	1.85

1) Suffix G = Lubrication groove and holes on outer rings.

2) Suffix N = Non-lubrication type, without lubrication groove & holes, without anti-rotation pin and holes.

2-Bolt Flange Units **LDK**[®]

UCFL Standard duty,Wider inner ring bearing,Setscrew locking

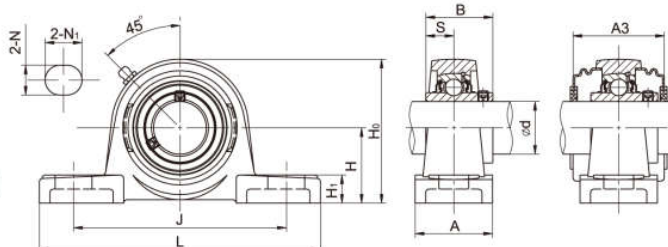


Unit No.	Shaft Dia		Dimensions(mm)										Bolt Size (mm)	Weight (kg)	
	d		H	J	A ₂	A ₁	A	N	L	B	S	Z			A ₃
	(in)	(mm)													
UCWFL201 202 203		12 15 17	97	76.5	15	11	25.5	11.5	55	27.4	11.5	30.9		M10	0.52 0.48 0.37
UCFL201 201-8	1/2	12	113	90	15	11	25.5	12	60	31	12.7	33.3		M10	0.51
UCFL 202 202-9 202-10	9/16 5/8	15	113	90	15	11	25.5	12	60	31	12.7	33.3		M10	0.51
UCFL203 203-11	11/16	17	113	90	15	11	25.5	12	60	31	12.7	33.3		M10	0.51
UCFL204 204-12	3/4	20	113	90	15	11	25.5	12	60	31	12.7	33.3	38.2	M10	0.51
UCFL205 205-14 205-15 205-16	7/8 15/16 1	25	130	99	16	13	27	16	68	34.1	14.3	35.8	40	M14	0.6
UCFL206 206-17 206-18 206-19 206-20	1-1/16 1-1/8 1-3/16 1-1/4	30	148	117	18	13	31	16	80	38.1	15.9	40.2	44	M14	0.9
UCFL207 207-20 207-21 207-22 207-23	1-1/4 1-5/16 1-3/8 1-7/16	35	160	130	19	15	34	16	90	42.9	17.5	44.4	48.5	M14	1.2
UCFL208 208-24 208-25	1-1/2 1-9/16	40	175	144	21	15	36	16	100	49.2	19	51.2	55.1	M14	1.5
UCFL209 209-26 209-27 209-28	1-5/8 1-11/16 1-3/4	45	188	148	22	16	38	19	108	49.2	19	52.2	57	M16	1.9
UCFL210 210-30 210-31 210-32	1-7/8 1-15/16 2	50	197	157	22	16	40	19	115	51.6	19	54.6	60	M16	2.2
UCFL211 211-32 211-34 211-35	2 2-1/8 2-3/16	55	224	184	25	18	43	19	125	55.6	22.2	58.4	63	M16	3.0
UCFL212 212-36 212-38 212-39	2-1/4 2-3/8 2-7/16	60	250	202	29	18	48	23	140	65.1	25.4	68.7	73.5	M20	4.0
UCFL213 213-40	2-1/2	65	258	210	30	22	50	23	155	65.1	25.4	69.7	74.5	M20	5.0
UCFL214 214-44	2-3/4	70	265	216	31	22	54	23	160	74.6	30.2	75.4	80	M20	5.6
UCFL215 215-47 215-48	2-15/16 3	75	275	225	34	22	56	23	165	77.8	33.3	78.5	82.5	M20	6.2
UCFL216		80	290	233	34	22	58	25	180	82.6	33.3	83.3	89	M22	7.8
UCFL217 217-52	3-1/4	85	305	248	36	24	63	25	190	85.7	34.1	87.6	93.1	M22	9.8
UCFL218 218-56	3-1/2	90	320	265	40	24	68	25	205	96	39.7	96.3	102	M22	12.4

Notes:1. Pressed steel covers available at one end.S=Open cap,SM=Close cap. Ordering example:UCFL205+SM.
2. Bearing housing solid base optional,add suffix SB as designation.

Pillow Blocks LDK®

UCP Standard duty,Wider inner ring bearing, Setscrew locking



Unit No.	Shaft Dia		Dimensions(mm)										Bolt Size (mm)	Weight (kg)	
	d		H	L	J	A	N	N ₁	H ₁	H ₀	B	S			A3
	(in)	(mm)													
UCWP201 202 203		12 15 17	30.2	125	95	32	13	18	13	57	27.4	11.5	—	M10	0.72 0.66 0.66
UCP201 201-8	1/2	12	30.2	127	95	38	13	19	14	61	31	12.7	—	M10	0.76
UCP202 202-9 202-10	9/16 5/8	15	30.2	127	95	38	13	19	14	61	31	12.7	—	M10	0.74
UCP203 203-11	11/16	17	30.2	127	95	38	13	19	14	61	31	12.7	—	M10	0.72
UCP204 204-12	3/4	20	33.3	127	95	38	13	19	14	64	31	12.7	46.4	M10	0.70
UCP205 205-14 205-15 205-16	7/8 15/16 1	25	36.5	140	105	38	13	19	15	71	34.1	14.3	48	M10	0.76
UCP206 206-17 206-18 206-19 206-20	1-1/16 1-1/8 1-3/16 1-1/4	30	42.9	160	121	44	17	21	16	82	38.1	15.9	52	M14	1.25
UCP207 207-20 207-21 207-22 207-23	1-1/4 1-5/16 1-3/8 1-7/16	35	47.6	167	126	48	17	21	17	92	42.9	17.5	59	M14	1.55
UCP208 208-24 208-25	1-1/2 1-9/16	40	49.2	180	137	52	17	21	18	99	49.2	19	68.2	M14	1.90
UCP209 209-26 209-27 209-28	1-5/8 1-11/16 1-3/4	45	54	190	146	54	17	21	20	106	49.2	19	70	M14	2.20
UCP210 210-30 210-31 210-32	1-7/8 1-15/16 2	50	57.2	206	159	60	20	25	21	114	51.6	19	76	M16	2.75
UCP211 211-32 211-34 211-35	2 2-1/8 2-3/16	55	63.5	217	172	60	20	25	23	125	55.6	22.2	76	M16	3.30
UCP212 212-36 212-38 212-39	2-1/4 2-3/8 2-7/16	60	69.9	238	186	70	20	25	24	137	65.1	25.4	89	M16	4.70
UCP213 213-40	2-1/2	65	76.2	262	203	70	25	30	26	149	65.1	25.4	89	M20	5.60
UCP214 214-44	2-3/4	70	79.4	266	210	72	25	30	27	155	74.6	30.2	98	M20	6.60
UCP215 215-47 215-48	2-15/16 3	75	82.6	274	217	74	25	30	28	162	77.8	33.3	97	M20	7.30
UCP216		80	88.9	292	232	78	25	30	30	174	82.6	33.3	110	M20	9.00
UCP217 217-52	3-1/4	85	95.2	310	247	83	25	28	32	186	85.7	34.1	114.2	M20	10.80
UCP218 218-56	3-1/2	90	101.6	326	262	88	27	30	33	198	96	39.7	124	M22	13.00
UCP220		100	115	380	305	95	30	36	40	225	108	42	—	M24	16.00

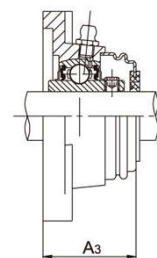
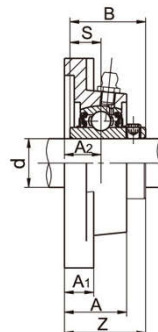
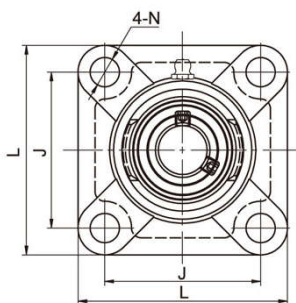
Notes:1.Bearing housing solid base optional,add suffix SB as designation.

2.Upon request,pressed steel covers available at both ends.S=Open cap,SM=Close cap. Ordering example:UCP205+SM.

3.Grease fittings also available at 90° positions.

4-Bolt Flange Units **LDK**[®]

UCF Standard duty,Wider inner ring bearing,Setscrew locking

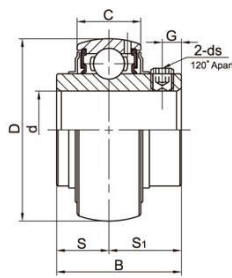


Unit No.	Shaft Dia		Dimensions(mm)									Bolt Size (mm)	Weight (kg)	
	d (in)	d (mm)	L	J	A ₂	A ₁	A	N	B	S	Z			A ₃
UCWF201 202 203		12 15 17	76	54	15	11	25.5	12	27.4	11.5	30.9		M10	0.72 0.62 0.61
UCF201 201-8	1/2	12	86	64	15	12	25.5	12	31	12.7	33.3		M10	0.61
UCF202 202-9 202-10	9/16 5/8	15	86	64	15	12	25.5	12	31	12.7	33.3		M10	0.61
UCF203 203-11	11/16	17	86	64	15	12	25.5	12	31	12.7	33.3		M10	0.61
UCF204 204-12	3/4	20	86	64	15	12	25.5	12	31	12.7	33.3	38.2	M10	0.61
UCF205 205-14 205-15 205-16	7/8 15/16 1	25	95	70	16	14	27	12	34.1	14.3	35.8	40	M10	0.80
UCF206 206-17 206-18 206-19 206-20	1-1/16 1-1/8 1-3/16 1-1/4	30	108	83	18	14	31	12	38.1	15.9	40.2	44	M10	1.00
UCF207 207-20 207-21 207-22 207-23	1-1/4 1-5/16 1-3/8 1-7/16	35	117	92	19	16	34	14	42.9	17.5	44.4	48.5	M12	1.40
UCF208 208-24 208-25	1-1/2 1-9/16	40	130	102	21	16	36	16	49.2	19	51.2	55.1	M14	1.80
UCF209 209-26 209-27 209-28	1-5/8 1-11/16 1-3/4	45	137	105	22	18	38	16	49.2	19	52.2	57	M14	2.20
UCF210 210-30 210-31 210-32	1-7/8 1-15/16 2	50	143	111	22	18	40	16	51.6	19	54.6	60	M14	2.40
UCF211 211-32 211-34 211-35	2 2-1/8 2-3/16	55	162	130	25	20	43	19	55.6	22.2	58.4	63	M16	3.50
UCF212 212-36 212-38 212-39	2-1/4 2-3/8 2-7/16	60	175	143	29	20	48	19	65.1	25.4	68.7	73.5	M16	4.20
UCF213 213-40	2-1/2	65	187	149	30	22	50	19	65.1	25.4	69.7	74.5	M16	5.30
UCF214 214-44	2-3/4	70	193	152	31	22	54	19	74.6	30.2	75.4	80	M16	5.90
UCF215 215-47 215-48	2-15/16 3	75	200	159	34	22	56	19	77.8	33.3	78.5	82.5	M16	6.30
UCF216		80	208	165	34	22	58	23	82.6	33.3	83.3	89	M20	7.30
UCF217 217-52	3-1/4	85	220	175	36	24	63	23	85.7	34.1	87.6	92.1	M20	8.90
UCF218 218-56	3-1/2	90	235	187	40	25	68	23	96	39.7	96.3	102	M20	11.60

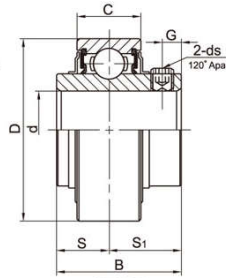
Notes:1. Pressed steel covers available at one end.S=Open cap,SM=Close cap. Ordering example:UCF205+SM.
2. Bearing housing solid base optional,add suffix SB as designation.

LDK[®] Bearing Inserts

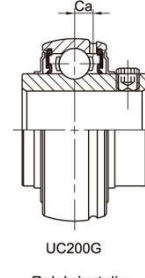
UC/UC..L3/CUC Standard duty, Wider inner ring, Setscrew locking



UC200(Light Duty)
Spherical O.D.



CUC200
Cylindrical O.D.



UC200G
Relubricatable



SL TYPE SEAL



TJ TYPE SEAL

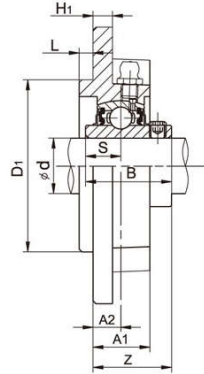
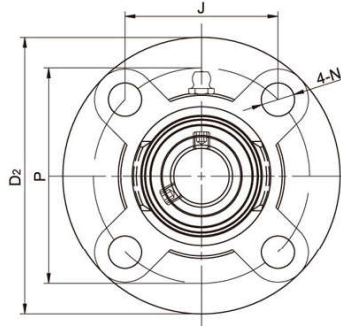


L3 TYPE SEAL

Bearing No.	Shaft Dia		Dimensions(mm)							ds (mm) (in.UNF)	Ca	Basic dynamic Load ratings (KN)	Basic static Load ratings (KN)	Weight (kg)
	d		D	B	C	S	S1	G						
	(in)	(mm)												
UCW201 201-8	1/2	12	40	27.4	14	11.5	15.9	4.2	M5x0.8	10-32	4.1	9.55	4.78	0.12
UCW202 202-9 202-10	9/16 5/8	15	40	27.4	14	11.5	15.9	4.2	M5x0.8	10-32	4.1	9.55	4.78	0.11
UCW203 203-11	11/16	17	40	27.4	14	11.5	15.9	4.2	M5x0.8	10-32	4.1	9.55	4.78	0.10
UC201 201-8	1/2	12	47	31	17	12.7	18.3	5	M6x1	1/4-28	4.3	12.82	6.65	0.21
UC202 202-9 202-10	9/16 5/8	15	47	31	17	12.7	18.3	5	M6x1	1/4-28	4.3	12.82	6.65	0.19
UC203 203-11	11/16	17	47	31	17	12.7	18.3	5	M6x1	1/4-28	4.3	12.82	6.65	0.18 0.19
UC204 204-12	3/4	20	47	31	17	12.7	18.3	5	M6x1	1/4-28	4.3	12.82	6.65	0.17 0.18
UC205 205-13 205-14 205-15 205-16	13/16 7/8 15/16 1	25	52	34.1	17	14.3	19.8	5.4	M6x1	1/4-28	4	14.03	8.05	0.19 0.22 0.21 0.20 0.19
UC206 206-17 206-18 206-19 206-20	1-1/16 1-1/8 1-3/16 1-1/4	30	62	38.1	19	15.9	22.2	5.5	M6x1	1/4-28	5.3	19.47	11.43	0.31 0.34 0.33 0.32 0.30
UC207 207-20 207-21 207-22 207-23	1-1/4 1-5/16 1-3/8 1-7/16	35	72	42.9	20	17.5	25.4	6.9	M8x1	5/16-24	5.8	25.69	15.55	0.46 0.52 0.51 0.48 0.46
UC208 208-24 208-25	1-1/2 1-9/16	40	80	49.2	21	19.0	30.2	8	M8x1	5/16-24	6.2	29.51	18.14	0.63 0.68 0.64
UC209 209-26 209-27 209-28	1-5/8 1-11/16 1-3/4	45	85	49.2	22	19.0	30.2	8	M8x1	5/16-24	6.5	31.85	20.8	0.68 0.78 0.74 0.70
UC210 210-30 210-31 210-32	1-7/8 1-15/16 2	50	90	51.6	24	19.0	32.6	10	M10x1.25	3/8-24	7	34.99	23.7	0.78 0.85 0.80 0.78
UC211 211-32 211-33 211-34 211-35	2 2-1/16 2-1/8 2-3/16	55	100	55.6	25	22.2	33.4	10	M10x1.25	3/8-24	7.4	43.34	29.39	1.07 1.22 1.16 1.10 1.05
UC212 212-36 212-37 212-38 212-39	2-1/4 2-5/16 2-3/8 2-7/16	60	110	65.1	27	25.4	39.7	10	M10x1.25	3/8-24	7.6	47.68	33.43	1.51 1.65 1.59 1.52 1.42
UC213 213-39 213-40	2-7/16 2-1/2	65	120	65.1	28	25.4	39.7	10	M10x1.25	3/8-24	8.5	57.2	40.01	1.86 1.96 1.94
UC214 214-43 214-44	2-11/16 2-3/4	70	125	74.6	29	30.2	44.4	12	M12x1.25	7/16-20	8.9	62.19	43.9	2.18 2.28 2.06
UC215 215-47 215-48	2-15/16 3	75	130	77.8	30	33.3	44.5	12	M12x1.25	7/16-20	9.2	62.08	44.82	2.21 2.30 2.13
UC216	80	140	82.6	33	33.3	49.3	12	M12x1.25		9.5	72.62	53.34	2.79	
UC217 217-52	3-1/4	85	150	85.7	35	34.1	51.6	12	M12x1.25	7/16-20	11.1	83.15	64.54	3.38 3.59
UC218 218-56	3-1/2	90	160	96	37	39.7	56.3	12	M12x1.25	7/16-20	11.8	95.84	72.64	4.46 4.56

LDK[®] Flange Cartridge Units

UCFC Standard duty, Wider inner ring bearing, Setscrew locking



Unit No.	Shaft Dia		Dimensions(mm)											Bolt Size (mm)	Weight (kg)	
	d		D2	P	J	A2	N	L	H1	A1	D1	B	S			Z
	(in)	(mm)														
UCWFC201 201-8	1/2	12	90	70	49.5	10	10	4	5	19	55	27.4	11.5	25.9	M8	0.64
UCWFC202 202-9 202-10	9/16 5/8	15	90	70	49.5	10	10	4	5	19	55	27.4	11.5	25.9	M8	0.60
UCWFC203 203-11	11/16	17	90	70	49.5	10	10	4	5	19	55	27.4	11.5	25.9	M8	0.58
UCFC204 204-12	3/4	20	100	78	55.1	10	12	5	7	20.5	62	31	12.7	28.3	M10	0.75
UCFC 205 205-14 205-15 205-16	7/8 15/16 1	25	115	90	63.6	10	12	6	7	21	70	34.1	14.3	29.8	M10	1.00
UCFC206 206-17 206-18 206-19 206-20	1-1/16 1-1/8 1-3/16 1-1/4	30	125	100	70.7	10	12	8	8	23	80	38.1	15.9	32.2	M10	1.30
UCFC207 207-20 207-21 207-22 207-23	1-1/4 1-5/16 1-3/8 1-7/16	35	135	110	77.8	11	14	8	9	26	90	42.9	17.5	36.4	M12	1.75
UCFC208 208-24 208-25	1-1/2 1-9/16	40	145	120	84.8	11	14	10	9	26	100	49.2	19	41.2	M12	2.00
UCFC209 209-26 209-27 209-28	1-5/8 1-11/16 1-3/4	45	160	132	93.3	10	16	12	14	26	105	49.2	19	40.2	M14	2.50
UCFC210 210-30 210-31 210-32	1-7/8 1-15/16 2	50	165	138	97.6	10	16	12	14	28	110	51.6	19	42.6	M14	2.95
UCFC211 211-32 211-34 211-35	2 2-1/8 2-3/16	55	185	150	106.1	13	19	12	15	30	125	55.6	22.2	46.4	M16	4.00
UCFC212 212-36 212-38 212-39	2-1/4 2-3/8 2-7/16	60	195	160	113.1	17	19	12	15	35	135	65.1	25.4	56.7	M16	4.90
UCFC213 213-40	2-1/2	65	205	170	120.2	16	19	14	15	36	145	65.1	25.4	55.7	M16	5.35
UCFC214 214-44	2-3/4	70	215	177	125.1	17	19	14	18	38	150	74.6	30.2	61.4	M16	6.90
UCFC215 215-47 215-48	2-15/16 3	75	220	184	130.1	18	19	16	18	39	160	77.8	33.3	62.5	M16	7.50
UCFC216		80	240	200	141.4	18	23	16	18	42	170	82.6	33.3	67.3	M20	8.70
UCFC217 217-52	3-1/4	85	250	208	147.1	18	23	18	20	45	180	85.7	34.1	69.6	M20	10.30
UCFC218 218-56	3-1/2	90	265	220	155.5	22	23	18	20	50	190	96	39.7	78.3	M20	13.50