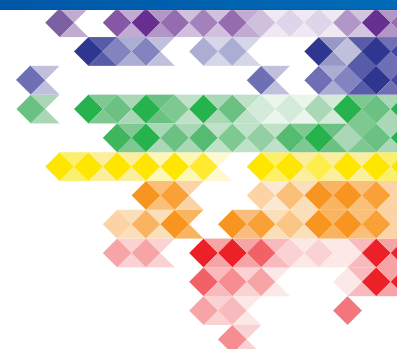


VeriVide



See in Truth



Dimmable CAC 60 Particulate viewing cabinet



VeriVide's DCAC 60 Particulate Light Cabinets meet global Particulate Contamination Standards

VeriVide manufactures the leading range of equipment for the visual assessment of colour. The DCAC 60 Particulate is the first viewing cabinet to comply with three global Pharmacopoeia standards (US, Europe and Japan) for the viewing of particulate contamination during pharmaceutical manufacturing.

VeriVide's Dimmable CAC 60 Particulate viewing cabinet is an indispensable tool for assessment under Pharmacopoeia standards. The Pharmacopoeia standard for visible particles assesses particulate contamination of extraneous undissolved particles, which can be unintentionally present in injections and parenteral infusions.

The stability of VeriVide's light sources gives excellent viewing conditions for reliable colour-critical decisions under standardised lighting. Thus ensuring agreement and consistency through global

supply chains, helping to highlight product quality issues, at the earliest opportunity.

VeriVide Colour Assessment Cabinets are designed specifically for colour matching and evaluation of any material where precise control of colour is critical.

- Backlight LCD control panel with various features: servicing indicator, auto sequence, warm-up, power save and data storage facility.
- Available as a 2-key Dimmable switch panel as standard and fitted with four VeriVide D65 Artificial Daylight lamps. This allows the necessary Lux

level changes to conform to the global Pharmacopoeia standards.

- The cabinet interior consists of a number of black and white non-reflective panels which enable laboratory personnel to identify possible particulate contamination in test samples.

VeriVide's own specially designed daylight simulator is the only fluorescent light source to give accurate colour reproduction across the colour spectrum. The DCAC Particulate cabinet is available in 600mm width.



DCAC60 Particulate

DCAC Particulate Dimensions (mm)

		WIDTH	HEIGHT	DEPTH
DCAC60 Particulate	External Dimensions	710	545	420
	Viewing Area	680	360	380

VeriVide Accessories

Dimmable feature

VeriVide’s electronic dimming control enables the cabinet to meet all existing Pharmacopoeia standards – ranging from below 1,000 lux to meet Japanese standards to full brightness at above 4,000 lux.

Observation tables

Two types of observation table are available at an additional cost.

- Tilting Table -allows variable angles of observation. Ideal for observing surface coatings, metallic and pearlescent materials



- Fixed Angle Table -(image above) with angle of observation fixed at 45° in accordance with ISO105 for the assessment of Colour Fastness.

Benches and Planning Chest

Benches allow the cabinet to be positioned at the optimal observation height. Benches with plan drawers can also be supplied. (Further details on our Accessories Datasheet).

CAC Particulate lamp options



All Particulate cabinets are fitted with D65 Daylight lamps as standard, which are configured to the Pharmacopoeia requirements.

For more detailed information regarding D65 lamps, please refer to our Lamp Options Datasheet or alternatively contact our sales team who will be happy to assist you.

Lamp usage

Lamps should be replaced after 2000 hours of use or annually. The control panel includes a service indicator that displays the number of hours usage for each individual light source.

The standard electrical supply is 220 V / 240 V (50 - 60 Hz). All other voltage supplies must be specified when ordering.

Positioning recommendations

For optimum results, it is important to minimise the amount of stray ambient light or glare interfering with the visual assessments. We recommend windows near the Light Cabinet should be covered with a grey curtain. Direct light entering the field of view must be kept to minimum.

The lighting environment around the cabinet should have a light level of 200-300 Lux and the walls near the cabinet should be painted with a neutral grey paint comparable with Munsell Grey N7.

We would be pleased to offer advice regarding your own specific location.

DCAC Particulate interiors

All our DCAC Particulate Light Cabinets are finished with a Ultra Matt Synthetic Coating (UMSC) as standard.

VeriVide is committed to innovation in colour assessment and quality control. From constructing bespoke standardised viewing environments to developing new lighting products to meet industry standards, improving your quality and productivity is always our priority.

VeriVide is BS EN ISO 9001 : 2015 assessed and registered. All our colour assessment and measurement equipment is made in the UK. Design and specification subject to change without notice.



For further technical information visit: www.verivide.com



Scan the QR code on your mobile device to go directly to our website

Tel: +44 (0)116 284 7790
Email: sales@verivide.com

VeriVide Limited,
Quartz Close, Warrens Business Park,
Enderby, Leicester LE19 4SG UK