



# STD

**Straight Side Double Crank  
Power Presses**

**閉式雙曲軸高剛性沖床**



200.250. 300. 350. 400. 500. 600. 800 ton

# STD

Straight Side Double Crank  
Power Presses

閉式雙曲軸高剛性沖床

**多樣化傳動結構**

*Versatile, optimized transmission  
deployment*

**強扭力傳動系統**

*High torque transmission system*

**超高剛性台身**

*Super Rigid Frame*



## 主要規格 MAIN SPECIFICATIONS

型 式 Model		STD-200		STD-250		STD-300		STD-350		STD-400				
		S	H	S	H	S	H	S	H	C				
最大加壓能力 Capacity	TONS	200		250		300		350		400				
能力發生點 Rated Tonnage Point	mm	9	7	9	7	9	7	13	7	7	9	7	9	
行程長 Stroke Length	mm	250	150	300	200	300	250	350	250	300	400	300	400	
行程數(連續) Strokes Per Minute	S.P.M	20-50	50-90	15-40	30-70	15-40	30-60	15-40	30-60	20-40	15-25	20-40	15-25	
最大模高 Die Height (S.D.A.U.)	mm	500		600		600		600		650	700	650	700	
滑塊面積 (左右×前後) Slide Area (L.R. x F.B.)	1	mm	1550x1100		2200x1200		2200x1200		2550x1400		2500x1300		3400x1300	
	2		1850x1100		2500x1200		2500x1200		2800x1400					
	3		2200x1100		2800x1200		2800x1200		3100x1400					
	4		2500x1100		3100x1200		3100x1200		3400x1400					
台盤面積 (左右×前後) Bolster Area (L.R. x F.B.)	1	mm	1550x1100		2200x1200		2200x1200		2550x1400		2500x1400		3400x1400	
	2		1850x1100		2500x1200		2500x1200		2800x1400					
	3		2200x1100		2800x1200		2800x1200		3100x1400					
	4		2500x1100		3100x1200		3100x1200		3400x1400					
滑塊調整量 Slide Adjusting Range	mm	150		150		200		200		150				
台身形式 Frame Type		一體式 One-piece		一體式 One-piece		3 分割 Tie-rod		3 分割 Tie-rod		3 分割 Tie-rod				

金豐直柱型沖床，適用多樣化之金屬成形工業上的各種需求，舉凡連續沖壓與自動移送沖壓，皆可完全依客戶需求量身打造，或選擇已量產化之標準規格機種。金豐沖床操作之便利性可以符合各種操作模式，符合今日世界製造業之種種需要，金豐之專業團隊能夠協助您規劃並選擇適合您產業需要之沖壓設備。

Chin Fong straight side presses deliver high performance for diversified stamping requirements in progressive and transfer die operations. Built to your exact specifications, or available in several standard models, Chin Fong presses can be efficiently operated in various modes to achieve the efficiency and productivity required to compete in today's demanding Chin Fong's manufacturing environment. Chin Fong experienced team can help you make a wise decision in choosing the right stamping equipment for your operation.

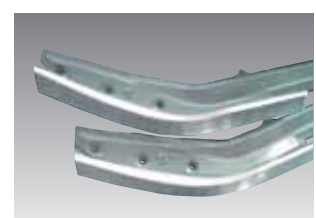
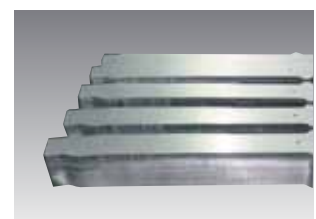
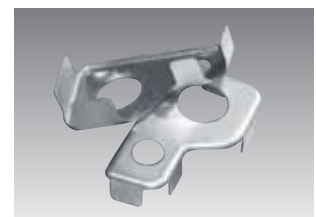
提供多樣化傳動結構選擇方便適用客戶各種沖壓條件  
**Drive Arrangements to Meet Diversified Stamping Needs**

我們的研發單位經過仔細研究評估，設計符合各種不同沖壓工程需求之傳動結構，適用各種工程如下料，引伸，成形，符合各種生產要求。

Chin Fong presses employ a variety of drive arrangements depending on the application requirements and application types such as blanking, drawing or forming, production volumes required, etc.



STD-500				STD-600				STD-800			
C				C				C			
500				600				800			
8	12	8	12	8	12	8	12	8	12	8	12
250	400	250	400	250	350	250	350	250	350	250	350
15-35	15-25	15-35	15-25	20-35	15-25	20-35	15-25	20-35	15-25	20-35	15-25
600	840	600	840	700	900	700	900	800	1000	800	1000
2700x1400		3400x1400		3600x1400		4600x1400		3600x1500		4600x1400	
2700x1500		3400x1500		3600x1500		4600x1500		3600x1600		4600x1500	
150	250	150	250	200	250	200	250	200	250	200	250
3 分割 Tie-rod				3 分割 Tie-rod				3 分割 Tie-rod			





## 超高剛性台身

### Super Rigid Steel Frame

金豐沖床高剛性結構方正，超高強度，低應變鋼材焊接台身，確保在公稱能力範圍下，用戶可進行各種不規則工件之連續沖壓，高剛性結構符合高精密度模具沖壓，可延長模具壽命。台身設計可採補強桿式，台身先行產生預壓減少沖壓時產生的變形，小床面沖床採一體式台身減少搬運與客戶端組立成本。加大側面開口適合自動移送裝置及送料機安裝使用。

Chin Fong rugged press frames are rigid, box type fabricated steel structures designed for exceptional strength and low deflection, assuring continued alignment of components. This rigidity provides greater accuracy and helps extend die life. When required or specified, pre-stressed tie rod construction is employed to assure frame deflection during stamping processes is minimized. In smaller presses the frame components are welded together instead of tie-rod constructed, to form a single-piece unitized frame. Large window openings are provided to permit coil or transfer feeding across most or all of front to back dimension of the bed.



## 強扭力傳動系統

### Robust drive train systems

沖床之齒輪於成形後採研磨，其高精密度，有效減低噪音，延長壽命，曲軸採高碳鋼材質鍛造，精密加工，傳動軸採用高碳鋼材料，經調質熱處理硬化研磨，呈現最高品質。所有傳動組件材料，精選特採剛強，高性能，耐久，耐損特質之材料，保用經年。

The gears on Chin Fong presses are hardened and precision ground for quiet, performance and extended life. Crankshafts are machined and precision ground from high carbon steel forgings, and normalized to eliminate harmful stress concentrations. Main and crankshaft bearing surfaces are manufactured from alloys chosen based on the specific application. All materials used are selected to provide superior strength, performance, and wear resistance characteristics.



沖壓機械專業製造廠

#### 金豐機器工業股份有限公司

#### CHIN FONG MACHINE INDUSTRIAL CO., LTD.

#### HEAD OFFICE & FACTORY:

總公司：台灣省彰化市彰水路186號  
186 Chang Shui Road, Chang Hua, Taiwan

TEL: +886-4-752-4131

FAX: +886-4-761-1920, 761-2814

http://www.chinfong.com.tw

E-mail: sales@chinfong.com.tw

#### 台北營業所 TAIPEI OFFICE

TEL: +886-3-435-5058

FAX: +886-3-463-9648

#### 高雄營業所 KAOHSIUNG OFFICE

TEL: +886-7-238-5689~90

FAX: +886-7-238-5691

#### 金豐(中國)機械工業有限公司

#### CHIN FONG (CHINA) MACHINE INDUSTRIAL CO., LTD.

寧波市鎮海經濟開發區五里牌金豐路3號

(Wu Li Pai) 3 Chin Fong Road, Zhenhai Economic Development Zone, Ningbo, China

TEL: +86-574-8630-1222

FAX: +86-574-8630-3709

http://www.chinfong.com.cn

#### U.S.A.: STAMTEC INC.

4160 Hillsboro Highway Manchester, TN 37355, U.S.A.

TEL: +1-931-393-5050

FAX: +1-931-393-5060

http://www.stamtec.com

#### OVERSEAS BRANCHES

THAILAND: CHIN FONG (THAILAND) CO., LTD.

TEL: +66-2-919-6820~2 FAX: +66-2-919-6823

INDONESIA: PT. CHIN FONG INDONESIA

TEL: +62-21-450-7422 FAX: +62-21-458-44197

MALAYSIA: CHIN FONG MACHINE (M) SDN BHD

TEL: +60-3-3290-6827~9 FAX: +60-3-3290-6830



### 服務·創新·回饋

※以上資料及圖片均屬本公司之產權，不得抄襲仿冒。且本公司得因產品之改良運行設計變更，不另通知。照片內之實物屬選用配備，僅供參考。

1210. CE03. 4000 AC Design / 04-27071159

The contents disclosed in this catalogue, including pictures, data, wordings & drawings, are exclusive property of Chin Fong Machine Industrial Co., Ltd. Unauthorized duplication or use part or whole of this catalogue is prohibited. Chin Fong reserves rights to modify the specifications & features, due to product improvements, without further notification. optional accessories showing on this picture are for reference only.