

WEMICO

EXTERNAL PROFILES

2019 BROCHURE

EXTERNAL WALL INSULATION PROFILES | FACADE PROFILES
RENDER BEADS | ARCHITECTURAL FABRICATION

www.wemico.com

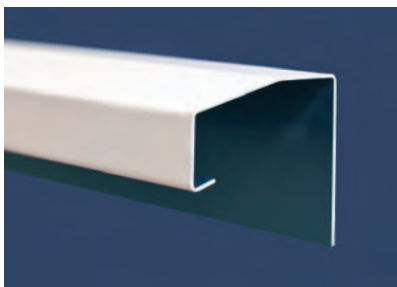
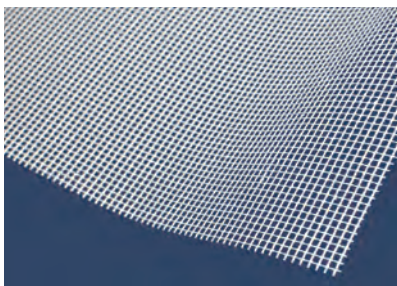
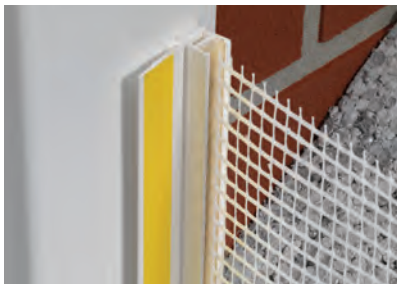
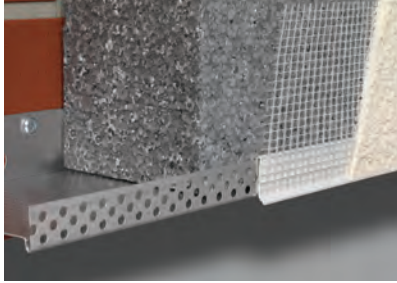


PROFILES
FOR MODERN
BUILDING

WEMICO Product index

| Product Ref No. | Page | Product Ref No. | Page | Product Ref No. | Page | Product Ref No. | Page | Product Ref No. | Page | Product Ref No. | Page | Product Ref No. | Page |
|-----------------|-------|-----------------|------|-----------------|---------|-----------------|------|-----------------|------|-----------------|------|-----------------|-------|
| 1151 | 16 | 9046 | 29 | 93309 | 9 | EC-R771/210 | 34 | TPF/230 | 34 | WE65N | 7 | WE89/89 | 11 |
| 1152 | 16 | 90604 | 4 | 9331 | 29 | EC-R771/220 | 34 | TPF/240 | 34 | WE65SS | 7 | WE89/89SS | 11 |
| 1156 | 16 | 90605 | 4 | 93310 | 9 | EC-R771/230 | 34 | TPR/50 | 35 | WE65NNS | 7 | WE9181-80 | 10 |
| 1157 | 16 | 90606 | 4 | 93311 | 9 | EC-R771/240 | 34 | TPR/60 | 35 | WE66 | 7 | WE9181-90 | 10 |
| 1225 | 24 | 90607 | 4 | 93312 | 9 | INT91203 | 6 | TPR/70 | 35 | WE66N | 7 | WE9181-100 | 10 |
| 1240 | 24 | 90608 | 4 | 9332 | 29 | INT91204 | 6 | TPR/80 | 35 | WE66SS | 7 | WE9181-110 | 10 |
| 2112 | 4 | 90609 | 4 | 9333 | 29 | INT91205 | 6 | TPR/90 | 35 | WE66NNS | 7 | WE9181-120 | 10 |
| 2113 | 4 | 9071 | 29 | 9334 | 29 | INT91206 | 6 | TPR/100 | 35 | WE67 | 7 | WE9181-130 | 10 |
| 2114 | 4 | 9072 | 29 | 9335 | 29 | INT91207 | 6 | TPR/110 | 35 | WE67N | 7 | WEC721/50 | 30 |
| 2130 | 5 | 9073 | 29 | 9407 | 27 | INT91208 | 6 | TPR/120 | 35 | WE67SS | 7 | WEC721/60 | 30 |
| 2132 | 5 | 90810 | 4 | 9408 | 27 | INT91209 | 6 | TPR/130 | 35 | WE67NNS | 7 | WEC721/70 | 30 |
| 2134 | 5 | 90811 | 4 | 9409 | 27 | INT91210 | 6 | TPR/140 | 35 | WE68 | 7 | WEC721/80 | 30 |
| 2144 | 4 | 90812 | 4 | 95503 | 6 | INT91211 | 6 | TPR/150 | 35 | WE68N | 7 | WEC721/90 | 30 |
| 2145 | 4 | 90813 | 4 | 95504 | 6 | INT91212 | 6 | TPR/160 | 35 | WE68SS | 7 | WEC721/100 | 30 |
| 2146 | 4 | 90814 | 4 | 95505 | 6 | INT91213 | 6 | TPR/170 | 35 | WE68NNS | 7 | WEC721/110 | 30 |
| 2147 | 4 | 90815 | 4 | 95506 | 6 | INT91214 | 6 | TPR/180 | 35 | WE69 | 7 | WEC721/120 | 30 |
| 2148 | 4 | 90816 | 4 | 95507 | 6 | INT91215 | 6 | TPR/190 | 35 | WE69N | 7 | WEC721/130 | 30 |
| 2149 | 4 | 90817 | 4 | 95508 | 6 | M10 | 23 | TPR/200 | 35 | WE69SS | 7 | WEC731/25 | 30 |
| 2150 | 4 | 90818 | 4 | 95509 | 6 | M13 | 23 | WE10 | 18 | WE69NNS | 7 | WEC731/35 | 30 |
| 2154 | 25 | 90819 | 4 | 95510 | 6 | M15 | 23 | WE10N | 18 | WE79 | 18 | WEC731/45 | 30 |
| 3035 | 11 | 90820 | 4 | 95511 | 6 | M20 | 23 | WE10SS | 18 | WE79SS | 18 | WEC731/55 | 30 |
| 3036 | 11 | 9095 | 28 | 95512 | 6 | M4 | 23 | WE10NNS | 18 | WE79/79 | 22 | WEC731/65 | 30 |
| 3502 | 27 | 9096 | 28 | 9603 | 29 | M6 | 23 | WE10/10 | 22 | WE79/79SS | 22 | WEC731/75 | 30 |
| 3518 | 27 | 90904 STEEL | 4 | 9604 | 29 | Mesh | 26 | WE10/10SS | 22 | WE80 | 18 | WEC731/85 | 30 |
| 3519 | 27 | 90905 STEEL | 4 | 9605 | 29 | P4 | 19 | WE13 | 18 | WE80N | 18 | WEC731/95 | 30 |
| 3520 | 27 | 90906 STEEL | 4 | 9606 | 29 | P6 | 19 | WE13N | 18 | WE80SS | 18 | WEC731/105 | 30 |
| 3524 | 27 | 90907 STEEL | 4 | 9607 | 29 | PRE-93304 | 9 | WE13SS | 18 | WE80NNS | 18 | WEC741/50 | 31 |
| 3525 | 27 | 90908 STEEL | 4 | 9608 | 29 | PRE-93305 | 9 | WE13NNS | 18 | WE80/80 | 22 | WEC741/60 | 31 |
| 3527 | 27 | 90909 STEEL | 4 | 9609 | 29 | PRE-93306 | 9 | WE13/13 | 22 | WE80/80SS | 22 | WEC741/70 | 31 |
| 3528 | 27 | 90910 STEEL | 4 | 9610 | 29 | PRE-93307 | 9 | WE13/13SS | 22 | WE806 | 18 | WEC741/80 | 31 |
| 3540 | 27 | 90911 STEEL | 4 | 9612 | 29 | PRE-93308 | 9 | WE16 | 18 | WE806N | 18 | WEC741/90 | 31 |
| 3563 | 27 | 90912 STEEL | 4 | 9625 | 28 | PRE-93309 | 9 | WE16N | 18 | WE806SS | 18 | WEC741/100 | 31 |
| 3578 | 27 | 90913 STEEL | 4 | 9626 | 28 | PRE-93310 | 9 | WE16SS | 18 | WE806NNS | 18 | WEC741/110 | 31 |
| 3610 | 29 | 90914 STEEL | 4 | 9627 | 28 | PRE-93311 | 9 | WE16NNS | 18 | WE806/806 | 22 | WEC741/120 | 31 |
| 3611 | 29 | 90915 STEEL | 4 | 9628 | 28 | PRE-93312 | 9 | WE16/16 | 22 | WE806/806SS | 22 | WEC741/130 | 31 |
| 3612 | 29 | 90916 STEEL | 4 | 9629 | 28 | R10 | 19 | WE16/16SS | 22 | WE81 | 18 | WEC741/140 | 31 |
| 3613 | 29 | 90917 STEEL | 4 | 9630 | 28 | R13 | 19 | WE17 | 16 | WE81N | 18 | WEC751/25 | 31 |
| 3614 | 29 | 90918 STEEL | 4 | 9632 | 28 | R15 | 19 | WE17N | 16 | WE81SS | 18 | WEC751/35 | 31 |
| 3617 | 29 | 90919 STEEL | 4 | APEX 200 | 33 | R20 | 19 | WE17SS | 16 | WE81NNS | 18 | WEC751/45 | 31 |
| 3677 | 28 | 90920 STEEL | 4 | APEX 771/200 | 33 | R4 | 19 | WE17NNS | 16 | WE81/81 | 22 | WEC751/55 | 31 |
| 3678 | 28 | 90904 TIMBER | 4 | APEX TB 771/100 | 33 | R6 | 19 | WE18 | 16 | WE81/81SS | 22 | WEC751/65 | 31 |
| 3679 | 28 | 90905 TIMBER | 4 | APEX TB 771/110 | 33 | RCJ/B10mm | 24 | WE18N | 16 | WE810 | 9 | WEC751/75 | 31 |
| 3681 | 28 | 90906 TIMBER | 4 | APEX TB 771/120 | 33 | RCJ/B6mm | 24 | WE18SS | 16 | WE810N | 9 | WEC751/85 | 31 |
| 3682 | 28 | 90907 TIMBER | 4 | APEX TB 771/130 | 33 | RCJ/T10mm | 24 | WE18NNS | 16 | WE810SS | 9 | WEC751/95 | 31 |
| 3683 | 28 | 90908 TIMBER | 4 | APEX TB 771/140 | 33 | RCJ/T6mm | 24 | WE22 | 18 | WE810NNS | 9 | WEC751/105 | 31 |
| 3685 | 28 | 90909 TIMBER | 4 | APEX TB 771/150 | 33 | TPF-EXT/100 | 34 | WE22N | 18 | WE810/810 | 11 | WEC751/115 | 31 |
| 3686 | 28 | 90910 TIMBER | 4 | APEX TB 771/160 | 33 | TPF-EXT/110 | 34 | WE22SS | 18 | WE810/810SS | 11 | WEC751/125 | 31 |
| 37103 | 17 | 90911 TIMBER | 4 | APEX TB 771/170 | 33 | TPF-EXT/120 | 34 | WE22NNS | 18 | WE811 | 9 | WEC761/30 | 31 |
| 37104 | 17 | 90912 TIMBER | 4 | APEX TB 771/180 | 33 | TPF-EXT/130 | 34 | WE22/22 | 22 | WE811N | 9 | WEC761/40 | 31 |
| 3712 | 17 | 90913 TIMBER | 4 | APEX TB 771/190 | 33 | TPF-EXT/140 | 34 | WE22/22SS | 22 | WE811SS | 9 | WEC761/50 | 31 |
| 3726 | 17 | 90914 TIMBER | 4 | APEX TB 771/200 | 33 | TPF-EXT/150 | 34 | WE28 | 20 | WE811NNS | 9 | WEC761/60 | 31 |
| 3727 | 17 | 90915 TIMBER | 4 | APEX TB 771/160 | 33 | TPF-EXT/160 | 34 | WE28N | 20 | WE812 | 9 | WEC761/70 | 31 |
| 3738 | 27 | 90916 TIMBER | 4 | APEX TB 771/170 | 33 | TPF-EXT/170 | 34 | WE28SS | 20 | WE812N | 9 | WEC761/80 | 31 |
| 37401 | 5 | 90917 TIMBER | 4 | APEX TB 771/180 | 33 | TPF-EXT/180 | 34 | WE28NNS | 20 | WE812SS | 9 | WEC761/90 | 31 |
| 37402 | 5 | 90918 TIMBER | 4 | APEX TB 771/190 | 33 | TPF-EXT/190 | 34 | WE29 | 20 | WE812NNS | 9 | WEC761/100 | 31 |
| 37404 | 5 | 90919 TIMBER | 4 | Brickslip30 | 7 | TPF-EXT/200 | 34 | WE29N | 20 | WE82 | 18 | WEC761/110 | 31 |
| 3741 | 27 | 90920 TIMBER | 4 | Brickslip40 | 7 | TPF-EXT/210 | 34 | WE29SS | 20 | WE82N | 18 | WEC761/120 | 31 |
| 3747 | 27 | 91003 | 24 | Brickslip50 | 7 | TPF-EXT/220 | 34 | WE29NNS | 20 | WE82SS | 18 | WEC761/130 | 31 |
| 3749 | 24/27 | 91004 | 4 | Brickslip60 | 7 | TPF-EXT/230 | 34 | WE410 | 20 | WE82NNS | 18 | WEC761/140 | 31 |
| 37500 | 8 | 91005 | 4 | Brickslip70 | 7 | TPF-EXT/240 | 34 | WE410N | 20 | WE82/82 | 22 | WEC761/150 | 31 |
| 37501 | 8 | 91006 | 4 | Brickslip80 | 7 | TPF-INT/100 | 34 | WE410SS | 20 | WE82/82SS | 22 | WEC771/30 | 31 |
| 37502 | 8 | 91007 | 4 | Brickslip90 | 7 | TPF-INT/110 | 34 | WE410NNS | 20 | WE825 | 9 | WEC771/40 | 31 |
| 37510 | 8 | 91008 | 4 | Brickslip100 | 7 | TPF-INT/120 | 34 | WE413 | 20 | WE825N | 9 | WEC771/50 | 31/32 |
| 37510A | 8 | 91009 | 4 | Brickslip110 | 7 | TPF-INT/130 | 34 | WE413N | 20 | WE825SS | 9 | WEC771/60 | 31/32 |
| 37513 | 27 | 91010 | 4 | Brickslip120 | 7 | TPF-INT/140 | 34 | WE413SS | 20 | WE825NNS | 9 | WEC771/70 | 31/32 |
| 37515 | 8 | 91011 | 4 | C10 | 15 | TPF-INT/150 | 34 | WE413NNS | 20 | WE83 | 9 | WEC771/80 | 31/32 |
| 37517 | 27 | 91012 | 4 | C13 | 15 | TPF-INT/160 | 34 | WE416 | 20 | WE83N | 9 | WEC771/90 | 31/32 |
| 37518 | 8 | 91013 | 4 | C15 | 15 | TPF-INT/170 | 34 | WE416N | 20 | WE83SS | 9 | WEC771/100 | 31/32 |
| 3752 | 14 | 91014 | 4 | C17N | 15 + 16 | TPF-INT/180 | 34 | WE416SS | 20 | WE83NNS | 9 | WEC771/110 | 31/32 |
| 37521 | 14 | 91015 | 4 | C2 | 15 | TPF-INT/190 | 34 | WE416SS | 20 | WE84 | 9 | WEC771/120 | 31/32 |
| 37522 | 8 | 91016 | 4 | C4 | 15 | TPF-INT/200 | 34 | WE61 | 20 | WE84N | 9 | WEC771/130 | 31/32 |
| 37523 | 14 | 91017 | 4 | C6 | 15 | TPF-INT/210 | 34 | WE61N | 20 | WE84SS | 9 | WEC771/140 | 32 |
| 37524 | 14 | 91018 | 4 | C8 | 15 | TPF-INT/220 | 34 | WE61SS | 20 | WE84NNS | 9 | WEC771/150 | 32 |
| 37525 | 14 | 91019 | 4 | D10 | 21 | TPF-INT/230 | 34 | WE61NNS | 20 | WE84/84 | 11 | WEC771/160 | 32 |
| 37526 | 14 | 91020 | 4 | D15 | 21 | TPF-INT/240 | 34 | WE610 | 7 | WE84/84SS | 11 | WEC771/170 | 32 |
| 37531 | 23 | 9115 | 12 | D20 | 21 | TPF-J/100 | 34 | WE610N | 7 | WE85 | 9 | WEC771/180 | 32 |
| 3756 | 4 | 9116 | 12 | DP/50 | 35 | TPF-J/110 | 34 | WE610SS | 7 | WE85N | 9 | WEC771/190 | 32 |
| 3760 | 12 | 9121 | 5 | DP/60 | 35 | TPF-J/120 | 34 | WE610NNS | 7 | WE85SS | 9 | WEC771/200 | 32 |
| 3761 | 12 | 9122 | 5 | DP/70 | 35 | TPF-J/130 | 34 | WE611 | 7 | WE85NNS | 9 | WEC781/25 | 31 |
| 37806 | 17 | 9124 | 5 | DP/80 | 35 | TPF-J/140 | 34 | WE611N | 7 | WE85/85 | 11 | WEC781/35 | 31 |
| 37909 | 17 | 9181 | 10 | DP/90 | 35 | TPF-J/150 | 34 | WE611SS | 7 | WE85/85SS | 11 | WEC781/45 | 31 |
| 3791 | 19 | 9182 | 10 | DP/100 | 35 | TPF-J/160 | 34 | WE611NNS | 7 | WE86 | 9 | WEC781/55 | 31 |
| 37914 | 19 | 9300 | 29 | DP/110 | 35 | TPF-J/170 | 34 | WE612 | 7 | WE86N | 9 | WEC781/65 | 31 |
| 3793 | 19 | 9301 | 29 | DP/120 | 35 | TPF-J/180 | 34 | WE612N | 7 | WE86SS | 9 | WEC781/75 | 31 |
| 3794 | 25 | 9302 | 29 | DP/130 | 35 | TPF-J/190 | 34 | WE612SS | 7 | WE86NNS | 9 | WEC781/85 | 31 |
| 37941 | 25 | 9303 | 29 | DP/140 | 35 | TPF-J/200 | 34 | WE612NNS | 7 | WE86/86 | 11 | WEC781/95 | 31 |
| 37942 | 25 | 9306 | 29 | DP/150 | 35 | TPF-J/210 | 34 | WE62 | 20 | WE86/86SS | 11 | WEC781/105 | 31 |
| 3796 | 19 | 9309 | 29 | DP/160 | 35 | TPF-J/220 | 34 | WE62N | 20 | WE87 | 9 | WEC781/115 | 31 |
| 3797 | 14 | 9312 | 29 | DP/170 | 35 | TPF-J/230 | 34 | WE62SS | 20 | WE87N | 9 | WEC781/125 | 31 |
| 3799 | 14 | 9313 | 29 | DP/180 | 35 | TPF-J/240 | 34 | WE62NNS | 20 | WE87SS | 9 | WEC791/30 | 31 |
| 3830 | 29 | 9314 | 29 | DP/190 | 35 | TPF/100 | 34 | WE625 | 7 | WE87NNS | 9 | WEC791/40 | 31 |
| 3832 | 29 | 9320 | 28 | DP/200 | 35 | TPF/110 | 34 | WE625N | 7 | WE87/87 | 11 | WEC791/50 | 31 |
| 3833 | 29 | 9321 | 28 | EC-R771/100 | 34 | TPF/120 | 34 | WE625SS | 7 | WE87/87SS | 11 | WEC791/60 | 31 |
| 3834 | 29 | 9322 | 28 | EC-R771/110 | 34 | TPF/130 | 34 | WE625NNS | 7 | WE88 | 9 | WEC791/70 | 31 |
| 3836 | 29 | 9323 | 28 | EC-R771/120 | 34 | TPF/140 | 34 | WE63 | 7 | WE88N | 9 | WEC791/80 | 31 |
| 38909 | 17 | 9324 | 28 | EC-R771/130 | 34 | TPF/150 | 34 | WE63N | 7 | WE88SS | 9 | WEC791/90 | 31 |
| 5009 | 13 | 9325 | | | | | | | | | | | |

WEMICO RANGE OF PROFILES



PROFILES FOR INSULATION SYSTEMS

| | |
|--|----|
| SYSTEM STARTER TRACK PROFILES | 4 |
| SYSTEM STARTER TRACK CLIPS | 5 |
| SYSTEM STARTER TRACK PROFILES FOR CURVED WALLS | 6 |
| INTEGRATED DRIP BASE PROFILES | 6 |
| BRICK SLIP PROFILES | 7 |
| HEAVY DUTY 6 SERIES BASE PROFILES | 7 |
| TWO PART ADJUSTABLE PVC BASE PROFILES | 8 |
| PVC ANGLE BRACKET | 8 |
| PVC BASE PROFILE | 8 |
| SYSTEM STOP PROFILES | 9 |
| FULL SYSTEM HORIZONTAL MOVEMENT JOINTS | 10 |
| MOVEMENT PROFILES FOR INSULATION SYSTEMS | 11 |
| RAIL SYSTEM | 12 |
| TOP HAT PROFILES | 13 |

RENDER ONLY BEADS

| | |
|--|-------|
| MESH WING CORNER BEADS | 14 |
| MESH WING CORNER BEADS WITH EXTENDED ARRIS | 14 |
| CORNER BEADS | 15-16 |
| PVC WINDOW FRAMESEAL BEADS | 17 |
| RENDER STOP BEADS | 18-19 |
| RENDER BELLCAST / DRIP BEADS | 20-21 |
| MOVEMENT BEADS | 22-23 |
| RENDER ONLY HORIZONTAL COMPRESSION JOINT | 24 |
| WINDOW HEAD / BALCONY DRIP PROFILES | 25 |

FIBRE MESH & INSECT MESH

| | |
|-----------------------------|----|
| ALKALI RESISTANT FIBRE MESH | 26 |
| INSECT MESH | 26 |

FACADE & VENTILATION PROFILES

| | |
|------------------------|---------|
| FACADE & EDGE PROFILES | 27 |
| VENTILATION PROFILES | 28 - 29 |

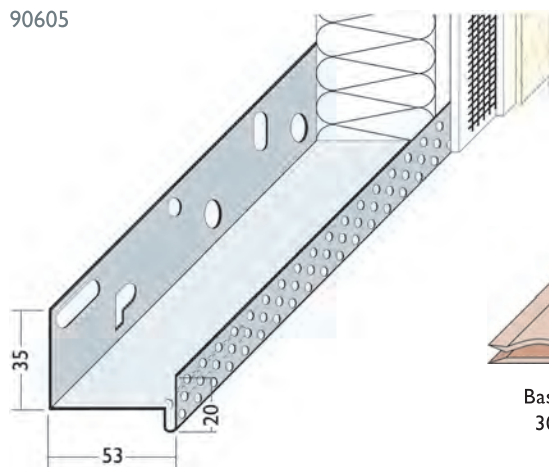
TRIMS, FLASHINGS & CUSTOM FABRICATION

| | |
|---|---------|
| STANDARD TRIMS & FLASHINGS | 30 - 31 |
| APEX SYSTEM | 32 - 33 |
| THERMO-PRO FASCIA | 34 |
| THERMO-PRO RAINWATER BOX | 35 |
| ALUMINIUM COPINGS | 36 |
| ALUMINIUM FASCIAS / SOFFITS & FAÇADE PANELS | 37 |
| BESPOKE SILLS, FLASHINGS AND WINDOW PODS | 38 |
| OUR FACILITIES | 39 |

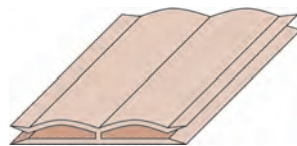


System Starter Track Profiles

90605



3756



Base profile connector
30cm, 100 per pack.

Ventilated Profiles for steel
and timber framed buildings



Wemico box shaped base profiles for insulation systems, designed for various thicknesses of insulation boards.

Aluminium and Stainless Steel - according to recommendations of system manufacturers.

Aluminium can be powder coated to any standard RAL colour. Corner profiles are also available to suit.

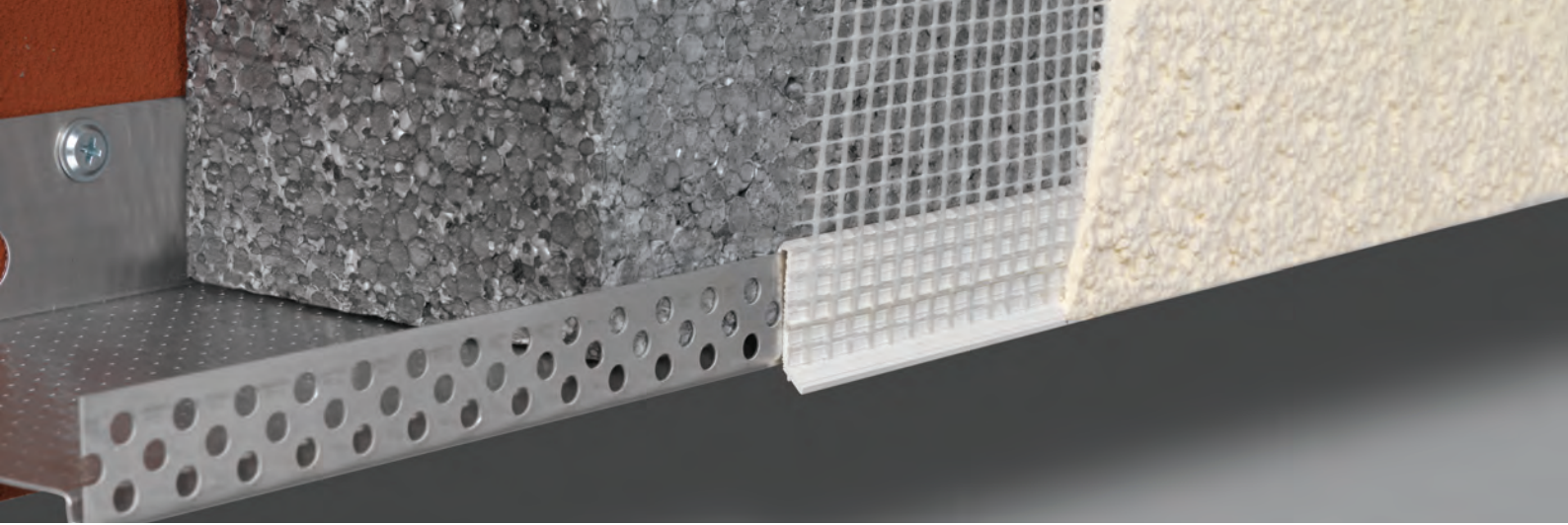
Two new product ranges have been introduced with the addition of slots at the rear of the sections at different centres to facilitate the different airflow rates that are required within the cavities of timber and steel frame structures.

| Insulation size mm | Clear width mm | Standard Aluminium | Premier 1mm Aluminium | Vented for Timber Frame 735.07mm ² Vent Rate | Vented for Steel Frame 153.14mm ² Vent Rate | Stainless Steel | Length m | Quantity per box |
|--------------------|----------------|--------------------|-----------------------|---|--|-----------------|----------|------------------|
| 40 | 43 | 90604 | 91004 | 90904 TIMBER | 90904 STEEL | 2144 | 2.5 | 10 |
| 50 | 53 | 90605 | 91005 | 90905 TIMBER | 90905 STEEL | 2145 | 2.5 | 10 |
| 60 | 63 | 90606 | 91006 | 90906 TIMBER | 90906 STEEL | 2146 | 2.5 | 10 |
| 70 | 73 | 90607 | 91007 | 90907 TIMBER | 90907 STEEL | 2147 | 2.5 | 10 |
| 80 | 83 | 90608 | 91008 | 90908 TIMBER | 90908 STEEL | 2148 | 2.5 | 10 |
| 90 | 93 | 90609 | 91009 | 90909 TIMBER | 90909 STEEL | 2149 | 2.5 | 10 |
| 100 | 103 | 90810 | 91010 | 90910 TIMBER | 90910 STEEL | 2150 | 2.5 | 10 |
| 110 | 113 | 90811 | 91011 | 90911 TIMBER | 90911 STEEL | | 2.5 | 6 |
| 120 | 123 | 90812 | 91012 | 90912 TIMBER | 90912 STEEL | 2112 | 2.5 | 6 |
| 130 | 133 | 90813 | 91013 | 90913 TIMBER | 90913 STEEL | | 2.5 | 6 |
| 140 | 143 | 90814 | 91014 | 90914 TIMBER | 90914 STEEL | 2113 | 2.5 | 6 |
| 150 | 153 | 90815 | 91015 | 90915 TIMBER | 90915 STEEL | | 2.5 | 6 |
| 160 | 163 | 90816 | 91016 | 90916 TIMBER | 90916 STEEL | 2114 | 2.5 | 6 |
| 170 | 173 | 90817 | 91017 | 90917 TIMBER | 90917 STEEL | | 2.5 | 6 |
| 180 | 183 | 90818 | 91018 | 90918 TIMBER | 90918 STEEL | | 2.5 | 6 |
| 190 | 193 | 90819 | 91019 | 90919 TIMBER | 90919 STEEL | | 2.5 | 6 |
| 200 | 203 | 90820 | 91020 | 90920 TIMBER | 90920 STEEL | | 2.5 | 6 |

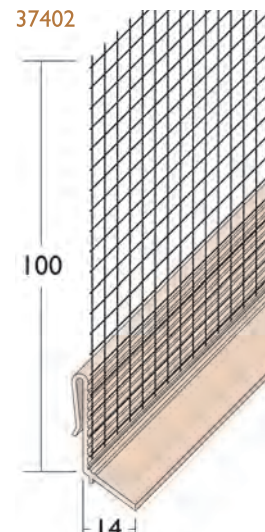
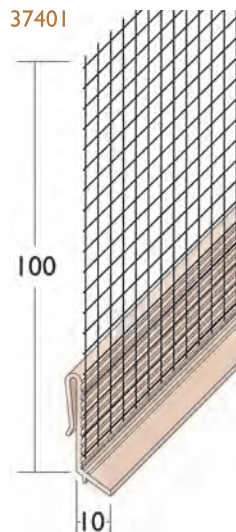
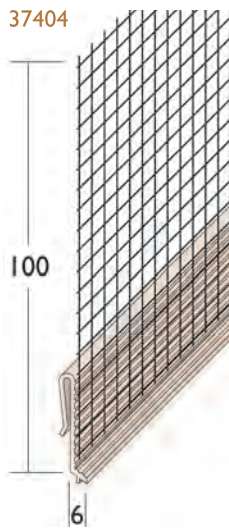
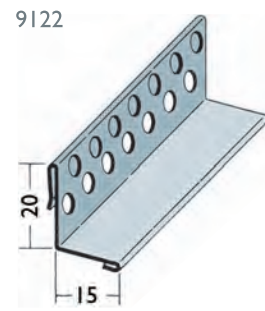
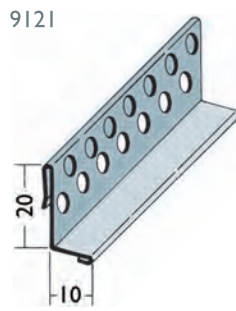
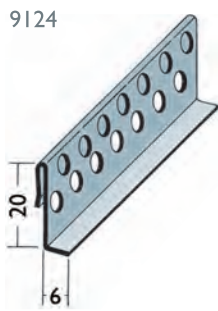
Available to order in other sizes.

WEMICO

T: 01562 820123



System Starter Track Clips



Wemico render clips to suit base profiles in a range of render thicknesses.
Available in Stainless Steel, Aluminium and PVC with mesh.

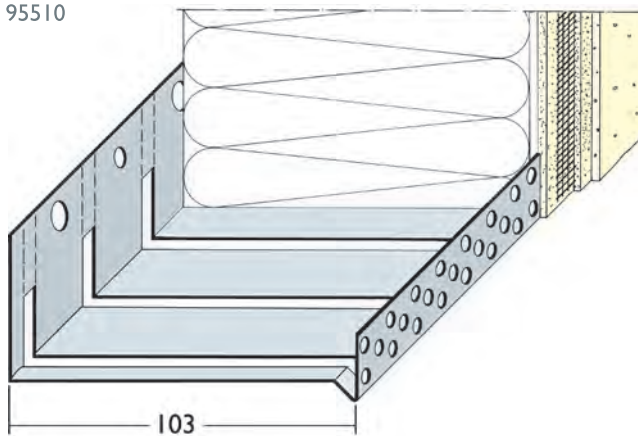
| Render depth mm | Aluminium Ref. number | Stainless Steel Ref. number | PVC Ref. number | Length m | Quantity per box |
|-----------------|-----------------------|-----------------------------|-----------------|----------|------------------|
| 6 | 9124 | 2134 | | 2.5 | 20 |
| 10 | 9121 | 2130 | | 2.5 | 20 |
| 15 | 9122 | 2132 | | 2.5 | 20 |
| 6 | | | 37404 | 2.5 | 15 |
| 10 | | | 37401 | 2.5 | 15 |
| 14 | | | 37402 | 2.5 | 14 |



System Starter Track Profiles for Curved Walls

Wemico Starter Track profiles for curved walls. (Slit the back fixing leg and then bend profile around the curve of the wall.)
Observe recommendations of systems manufacturers.

95510



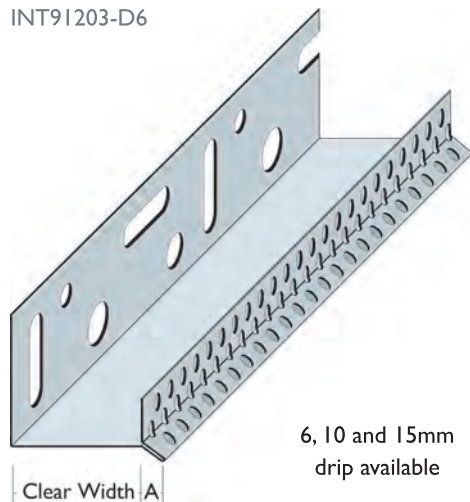
| Insulation size mm | Clear width mm | Aluminium Ref. number | Length m | Quantity per box |
|--------------------|----------------|-----------------------|----------|------------------|
| 30 | 33 | 95503 | 2.5 | 5 |
| 40 | 43 | 95504 | 2.5 | 5 |
| 50 | 53 | 95505 | 2.5 | 5 |
| 60 | 63 | 95506 | 2.5 | 5 |
| 70 | 73 | 95507 | 2.5 | 5 |
| 80 | 83 | 95508 | 2.5 | 5 |
| 90 | 93 | 95509 | 2.5 | 5 |
| 100 | 103 | 95510 | 2.5 | 5 |
| 110 | 113 | 95511 | 2.5 | 5 |
| 120 | 123 | 95512 | 2.5 | 4 |

Available to order in sizes up to 400mm.

Integrated Drip Base Profiles

Wemico integrated drip base profiles for insulated systems, designed for various thicknesses of insulation boards and available with a built-in 6, 10 or 15mm drip and in various thicknesses. The profiles are supplied in mill finish aluminium.

INT91203-D6



6, 10 and 15mm
drip available

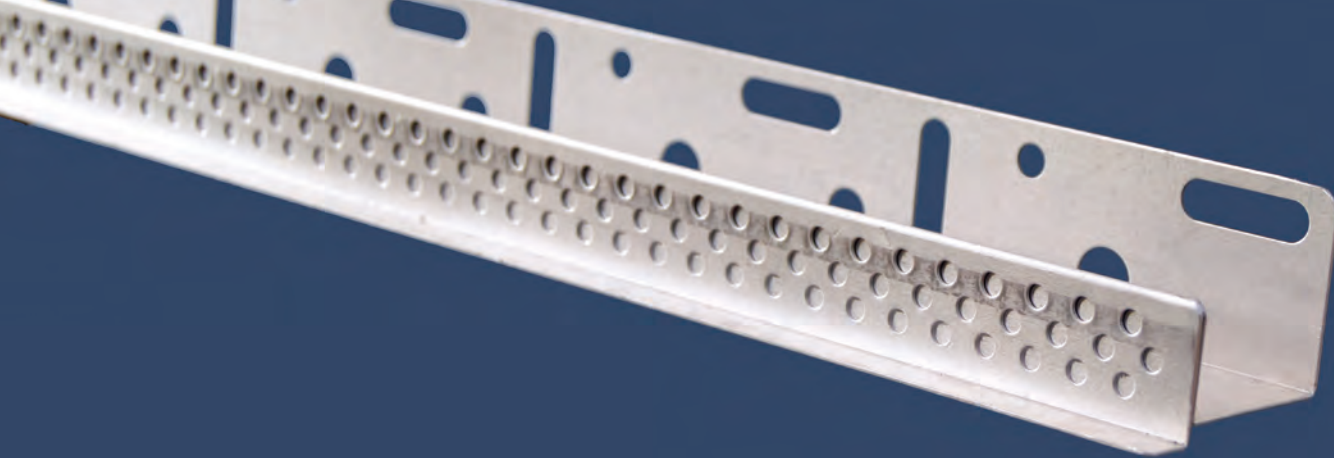
| Insulation size | Clear width mm | 6mm Drip (Dim A) | 10mm Drip (Dim A) | 15mm Drip (Dim A) | Length m | Qty per pack |
|-----------------|----------------|------------------|-------------------|-------------------|----------|--------------|
| 30 | 33 | INT91203-D6 | INT91203-D10 | INT91203-D15 | 2.5 | 10 |
| 40 | 43 | INT91204-D6 | INT91204-D10 | INT91204-D15 | 2.5 | 10 |
| 50 | 53 | INT91205-D6 | INT91205-D10 | INT91205-D15 | 2.5 | 10 |
| 60 | 63 | INT91206-D6 | INT91206-D10 | INT91206-D15 | 2.5 | 10 |
| 70 | 73 | INT91207-D6 | INT91207-D10 | INT91207-D15 | 2.5 | 10 |
| 80 | 83 | INT91208-D6 | INT91208-D10 | INT91208-D15 | 2.5 | 10 |
| 90 | 93 | INT91209-D6 | INT91209-D10 | INT91209-D15 | 2.5 | 10 |
| 100 | 103 | INT91210-D6 | INT91210-D10 | INT91210-D15 | 2.5 | 10 |
| 110 | 113 | INT91211-D6 | INT91211-D10 | INT91211-D15 | 2.5 | 10 |
| 120 | 123 | INT91212-D6 | INT91212-D10 | INT91212-D15 | 2.5 | 10 |
| 130 | 133 | INT91213-D6 | INT91213-D10 | INT91213-D15 | 2.5 | 10 |
| 140 | 143 | INT91214-D6 | INT91214-D10 | INT91214-D15 | 2.5 | 10 |
| 150 | 153 | INT91215-D6 | INT91215-D10 | INT91215-D15 | 2.5 | 10 |

Codes show 1.2mm thick material.

These profiles are also available in 0.8mm and 1.0mm material thickness.

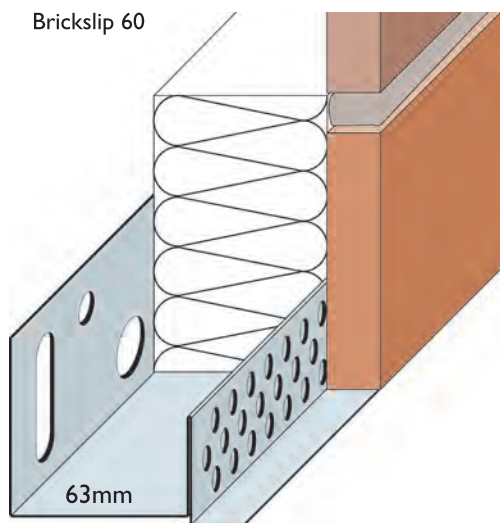
WEMICO

T: 01562 820123



Brick Slip Profiles

Brickslip 60



Wemico aluminium brickslip profiles for use in insulation systems finished with a brick slip detail.

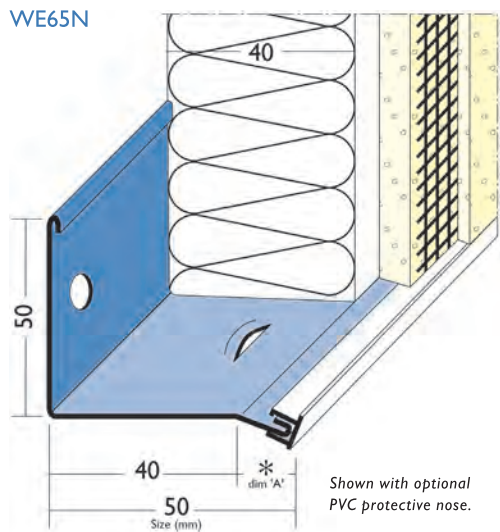
These profiles can be powder coated to any standard RAL colour.

| Insulation size mm | Clear width mm | Aluminium Ref. number | Length m |
|--------------------|----------------|-----------------------|----------|
| 30 | 33 | Brickslip30 | 2.5 |
| 40 | 43 | Brickslip40 | 2.5 |
| 50 | 53 | Brickslip50 | 2.5 |
| 60 | 63 | Brickslip60 | 2.5 |
| 70 | 73 | Brickslip70 | 2.5 |
| 80 | 83 | Brickslip80 | 2.5 |
| 90 | 93 | Brickslip90 | 2.5 |
| 100 | 103 | Brickslip100 | 2.5 |
| 110 | 113 | Brickslip110 | 2.5 |
| 120 | 123 | Brickslip120 | 2.5 |

Available in larger sizes to order.

Heavy Duty 6 Series Base Profiles

WE65N



* - The drip section increases from 10mm to 30mm on any Base Profiles over 70mm deep

Wemico heavy duty 6 series base profiles for insulated systems made from powder coated Galvanised Steel or Stainless Steel with optional PVC nosing which will provide additional protection against abrasion and corrosion.

External and internal corners and additional sizes made to order.

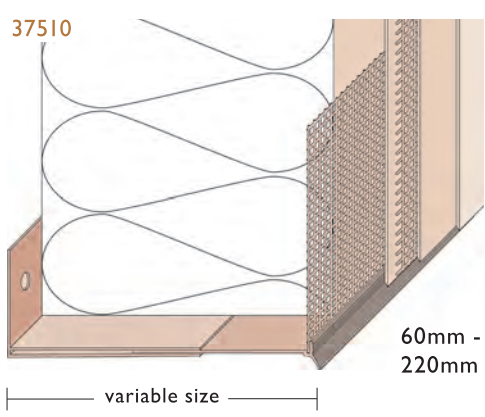
| Overall system size mm | Polyester Powder Coated Galv. Steel Ref. number | Polyester Powder Coated Galv. Steel with PVC Nosing Ref. number | Stainless Steel Ref. number | Stainless Steel w/ PVC Nosing Ref. number | Length m | Dim mm |
|------------------------|---|---|-----------------------------|---|----------|--------|
| 25 | WE625 | WE625N | WE625SS | WE625NSS | 2.5 | 10 |
| 30 | WE63 | WE63N | WE63SS | WE63NSS | 2.5 | 10 |
| 40 | WE64 | WE64N | WE64SS | WE64NSS | 2.5 | 10 |
| 50 | WE65 | WE65N | WE65SS | WE65NSS | 2.5 | 10 |
| 60 | WE66 | WE66N | WE66SS | WE66NSS | 2.5 | 10 |
| 70 | WE67 | WE67N | WE67SS | WE67NSS | 2.5 | 10 |
| 80 | WE68 | WE68N | WE68SS | WE68NSS | 2.5 | 30 |
| 90 | WE69 | WE69N | WE69SS | WE69NSS | 2.5 | 30 |
| 100 | WE610 | WE610N | WE610SS | WE610NSS | 2.5 | 30 |
| 110 | WE611 | WE611N | WE611SS | WE611NSS | 2.5 | 30 |
| 120 | WE612 | WE612N | WE612SS | WE612NSS | 2.5 | 30 |

Available in larger sizes to order.

**CUT
THERMAL
BRIDGING!**



Two part adjustable PVC Base Profiles



Wemico's range of PVC base rail profiles have been designed to cut thermal bridging and are adjustable to suit insulation thicknesses from 60mm to 220mm.

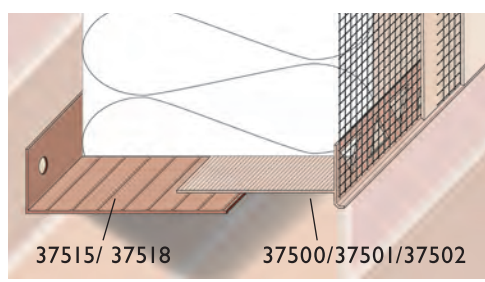
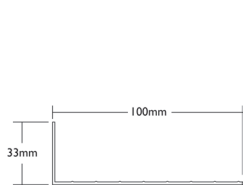
Adjustable to suit various insulation sizes.
Helps to avoid thermal bridging.
Attached mesh aids render adhesion.

Stocking advantage.
Robust and shock resistant.
Maintenance free and rustproof.
Easy to cut and safer to handle.

| Width mm | Render depth mm | PVC Ref. number | Length m | Quantity per box |
|-----------|-----------------|-----------------|----------|------------------|
| 60 - 90 | 6 | 37510A | 2.0 | 10 |
| 100 - 160 | 6 | 37510 | 2.0 | 10 |
| 180 - 220 | 6 | 37522 | 2.0 | 10 |

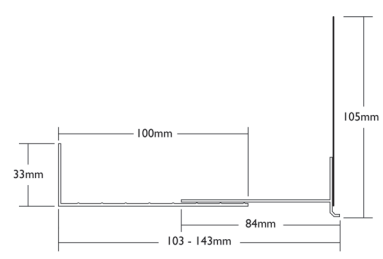
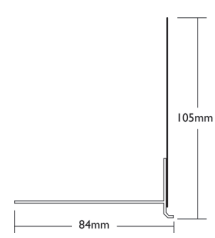
PVC Angle Bracket

For use in conjunction with the 37500 range, to provide support in the absence of any base insulation.



PVC Base Profile

For use between facade and base insulations. Available in a range of render thicknesses.



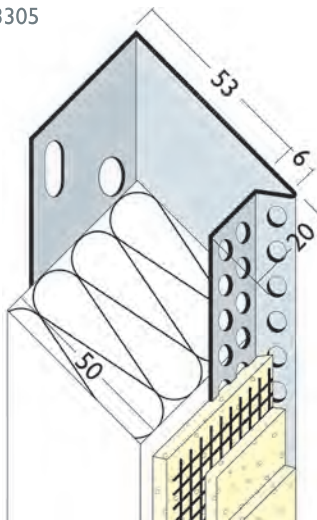
| PVC Ref. number | Length m | Quantity per box | Dim A |
|-----------------|----------|------------------|-------|
| 37515 | 2.0 | 15 | 100 |
| 37518 | 2.0 | 15 | 160 |

| Render depth mm | PVC Ref. number | Length m | Quantity per box |
|-----------------|-----------------|----------|------------------|
| 6 | 37500 | 2.0 | 15 |
| 10 | 37501 | 2.0 | 15 |
| 14 | 37502 | 2.0 | 15 |



System Stop Profiles

93305

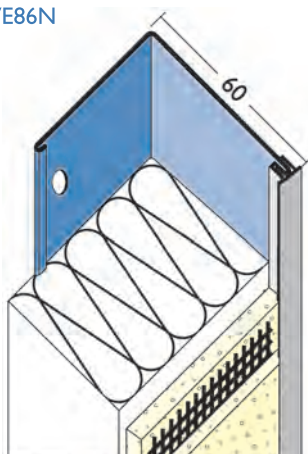


| Insulation size mm | Clear width mm | Aluminium Ref. number | Pre-coated Aluminium Ref. number | Length m | Quantity per box |
|--------------------|----------------|-----------------------|----------------------------------|----------|------------------|
| 40 | 43 | 93304 | PRE-93304 | 2.5 | 10 |
| 50 | 53 | 93305 | PRE-93305 | 2.5 | 10 |
| 60 | 63 | 93306 | PRE-93306 | 2.5 | 10 |
| 70 | 73 | 93307 | PRE-93307 | 2.5 | 10 |
| 80 | 83 | 93308 | PRE-93308 | 2.5 | 10 |
| 90 | 93 | 93309 | PRE-93309 | 2.5 | 10 |
| 100 | 103 | 93310 | PRE-93310 | 2.5 | 10 |
| 110 | 113 | 93311 | PRE-93311 | 2.5 | 10 |
| 120 | 123 | 93312 | PRE-93312 | 2.5 | 10 |

Available to order in sizes of up to 400mm.

Wemico aluminium stop track profiles for insulation systems, designed for various thicknesses of insulation boards. These profiles can be powder coated to any standard RAL colour.

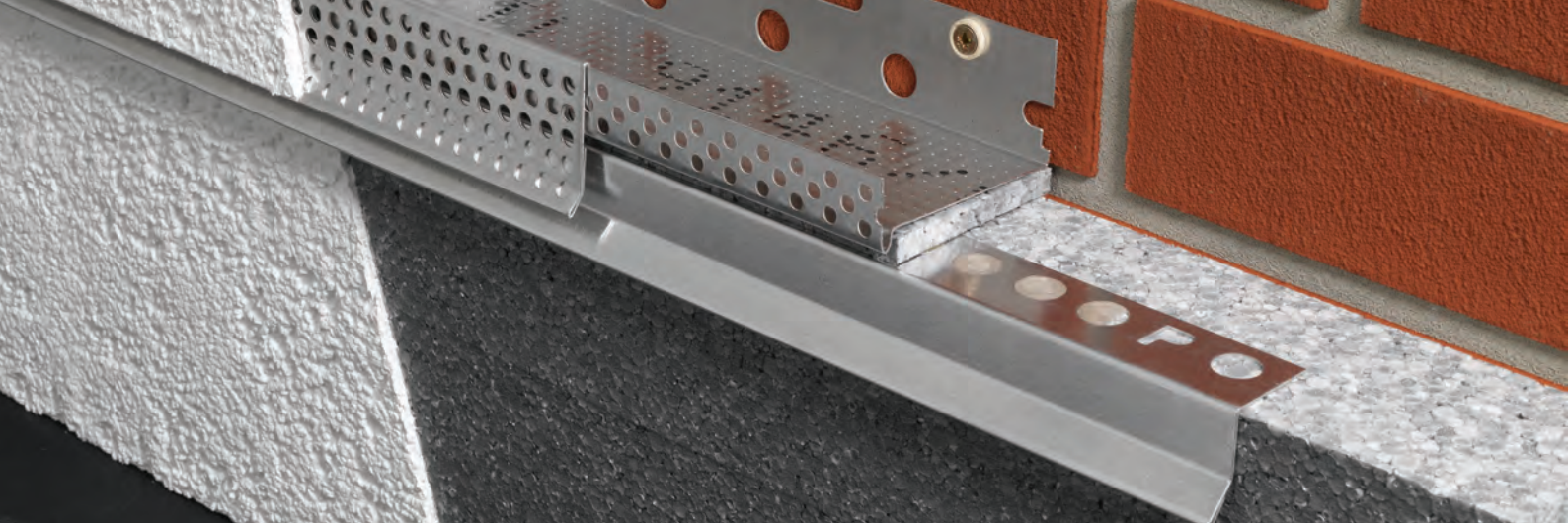
WE86N



| Overall system size mm | Polyester Powder Coated Galvanised Steel Ref. number | Polyester Powder Coated Galv. Steel with PVC Nosing Ref. number | Length m | Stainless Steel Ref. number | Stainless Steel with PVC Nosing Ref. number | Length m |
|------------------------|--|---|----------|-----------------------------|---|----------|
| 25 | WE825 | WE825N | 2.5 | WE825SS | WE825NSS | 2.5 |
| 30 | WE83 | WE83N | 2.5 | WE83SS | WE83NSS | 2.5 |
| 40 | WE84 | WE84N | 2.5 | WE84SS | WE84NSS | 2.5 |
| 50 | WE85 | WE85N | 2.5 | WE85SS | WE85NSS | 2.5 |
| 60 | WE86 | WE86N | 2.5 | WE86SS | WE86NSS | 2.5 |
| 70 | WE87 | WE87N | 2.5 | WE87SS | WE87NSS | 2.5 |
| 80 | WE88 | WE88N | 2.5 | WE88SS | WE88NSS | 2.5 |
| 90 | WE89 | WE89N | 2.5 | WE89SS | WE89NSS | 2.5 |
| 100 | WE810 | WE810N | 2.5 | WE810SS | WE810NSS | 2.5 |
| 110 | WE811 | WE811N | 2.5 | WE811SS | WE811NSS | 2.5 |
| 120 | WE812 | WE812N | 2.5 | WE812SS | WE812NSS | 2.5 |

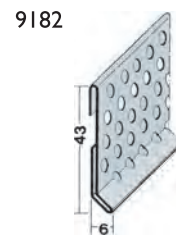
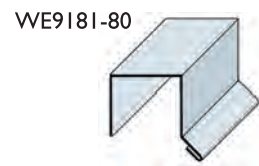
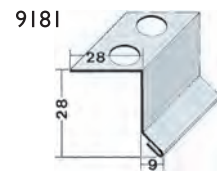
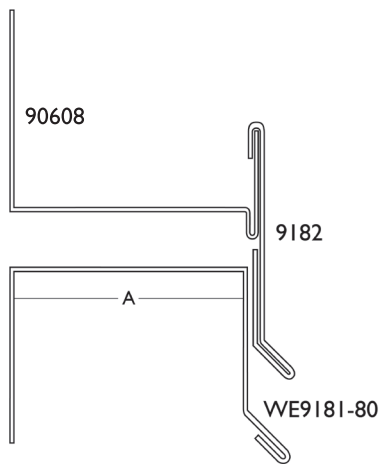
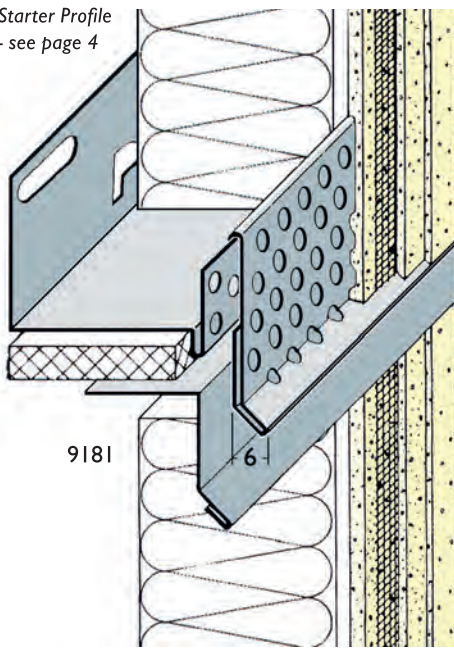
Available to order in sizes of up to 400mm.

Wemico heavy duty 8 Series stop profiles made from powder coated Galvanised Steel or Stainless Steel with optional PVC nosing, which will provide additional protection against abrasion and corrosion.



Full System Horizontal Movement Joints

Starter Profile
- see page 4



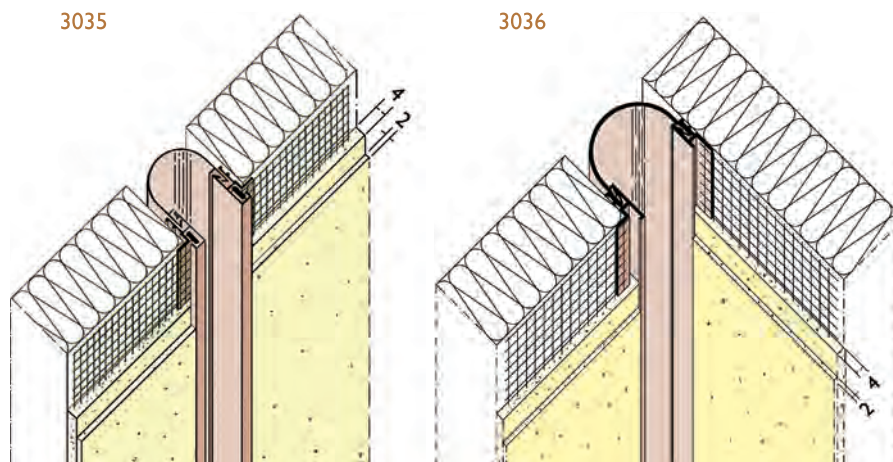
Three part horizontal movement joint to suit insulation systems, incorporating system starter track profiles with a clip and angle section for various insulation and render thicknesses. Aluminium profiles can be powder coated to any standard RAL colour.

| Render depth mm | Insulation depth mm | Aluminium Ref. number | Pre-coated White Aluminium Ref. number | Length m | Quantity per box |
|-----------------|---------------------|-----------------------|--|----------|------------------|
| 6 | | 9181 | | 2.5 | 20 |
| 6 | | 9182 | | 2.5 | 10 |
| 6 | 80 | | WE9181-80 | 2.5 | 20 |
| 6 | 90 | | WE9181-90 | 2.5 | 10 |
| 6 | 100 | | WE9181-100 | 2.5 | 10 |
| 6 | 110 | | WE9181-110 | 2.5 | 10 |
| 6 | 120 | | WE9181-120 | 2.5 | 10 |
| 6 | 130 | | WE9181-130 | 2.5 | 10 |

Also available in larger sizes, and can be powder coated in any standard RAL colour.

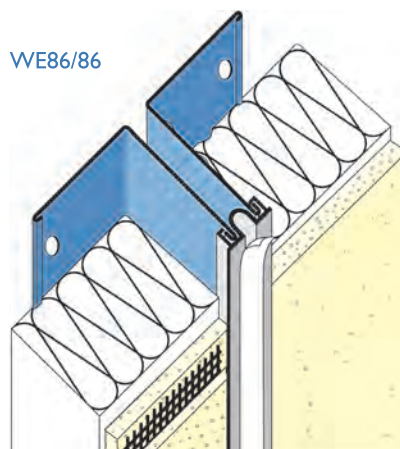


Movement Profiles for Insulation Systems



Wemico expansion joint profiles with soft PVC centre section for insulation systems, with alkali-resistant glassfibre mesh. Movement: +/-5mm. This profile is recommended for vertical use only.

| Render depth mm | PVC Ref. number | Length m | Quantity per box |
|-----------------|-----------------|----------|------------------|
| 6 | 3035 | 2.5 | 25 |
| 6 | 3036 | 2.5 | 25 |

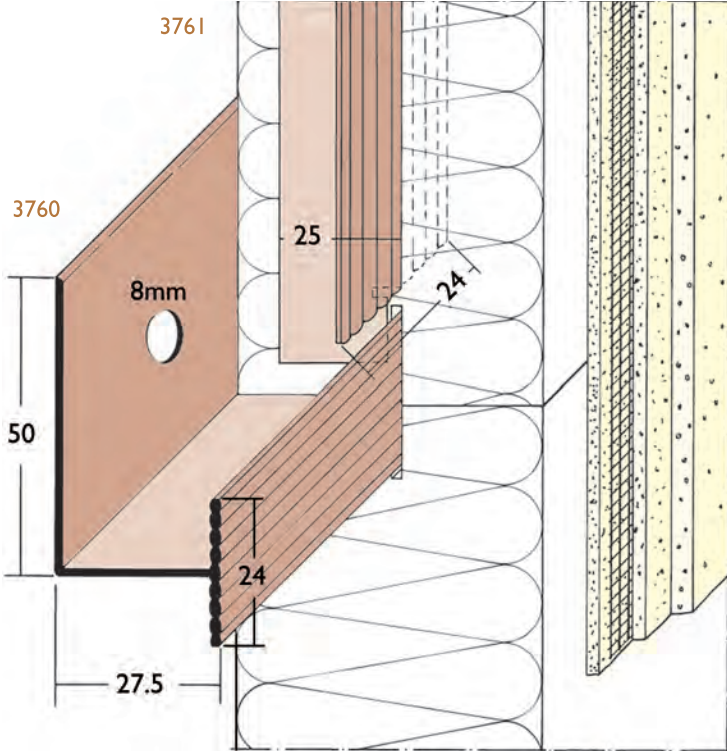


| Overall system size mm | Polyester Powder Coated Galvanised Steel Ref. number | Stainless Steel Ref. number | Length m | Mesh type |
|------------------------|--|-----------------------------|----------|-----------------|
| 40 | WE84/84 | WE84/84SS | 2.5 | Perforated wing |
| 50 | WE85/85 | WE85/85SS | 2.5 | Perforated wing |
| 60 | WE86/86 | WE86/86SS | 2.5 | Perforated wing |
| 70 | WE87/87 | WE87/87SS | 2.5 | Perforated wing |
| 80 | WE88/88 | WE88/88SS | 2.5 | Perforated wing |
| 90 | WE89/89 | WE89/89SS | 2.5 | Perforated wing |
| 100 | WE810/810 | WE810/810SS | 2.5 | Perforated wing |

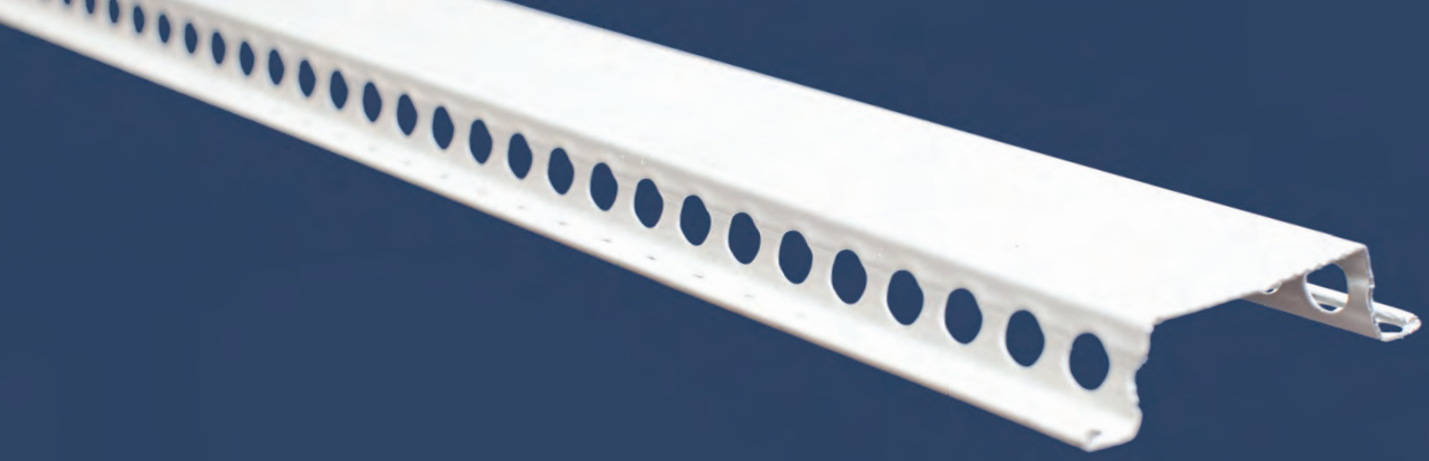
Available to order in sizes of up to 400mm.



Rail System

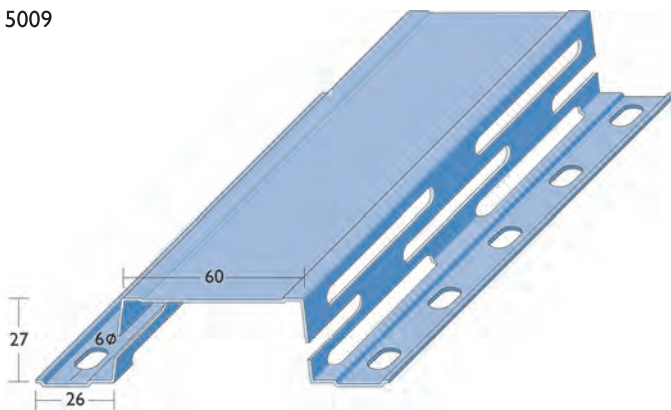


| PVC Ref. number | Aluminium Ref. number | Length m | Quantity per box |
|-----------------|-----------------------|-------------------|------------------|
| 3760 | | 2.5 | 25 |
| 3761 | | 49.5 = board 50cm | 100 |
| | 9115 | 47 = board 50cm | 100 |
| | 9116 | 2.0 | 25 |



Top Hat Profiles

5009

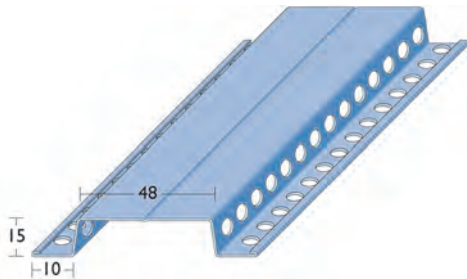


| Galvanised Steel Ref. number | Thickness mm | Length m |
|------------------------------|--------------|----------|
| 5009 | 0.9 | 3.0 |

Galvanised Steel - available powder coated if required.

Other sizes and corner options are available on request.

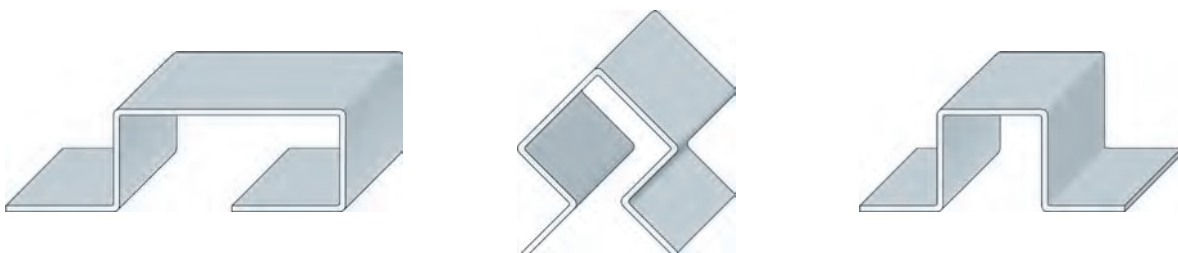
5112

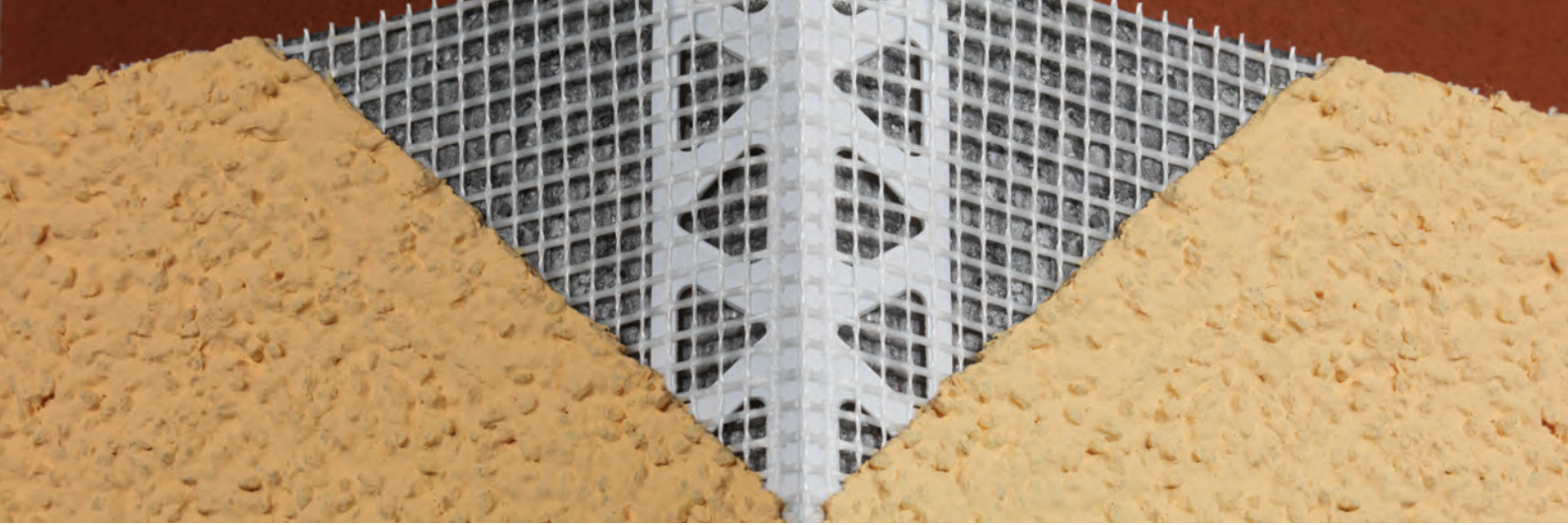


| Galvanised Steel Ref. number | Thickness mm | Length m |
|------------------------------|--------------|----------|
| 5112 | 0.6 | 3.0 |

Galvanised Steel - available powder coated if required.

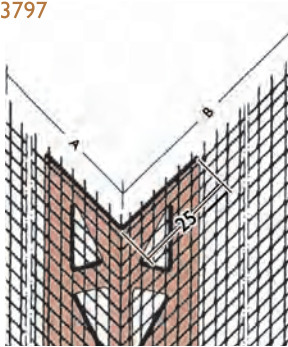
Bespoke Top Hat variants available





Mesh Wing Corner Beads

3797



3797 PVC Corner profile with alkali-resistant glassfibre mesh wings.

3752 PVC Corner profile is supplied on a 50m roll, which allows it to be cut to the required length and reduces waste. The "fold" enables a range of angles.



3752

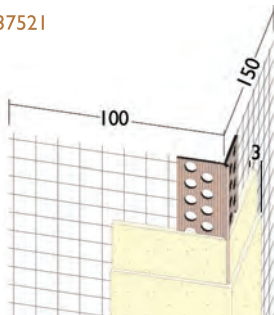
| Dimension A mm | Dimension B mm | PVC Ref. number | Length m | Quantity per box |
|----------------|----------------|-----------------|----------|------------------|
| 80 | 120 | 3799 | 2.5 | 100 |
| 100 | 150 | 3797 | 2.5 | 100 |
| 90 | 110 | 3752 | 50 roll | 1 roll |

Mesh Wing Corner Beads with Extended Arris

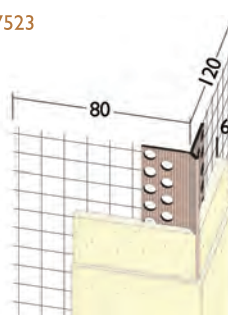
37521/37523/37524 PVC mesh wing corner profile range with extended arris to accommodate a variety of render thicknesses.

37525/37526 The perforated arris aids the adhesion of the render.

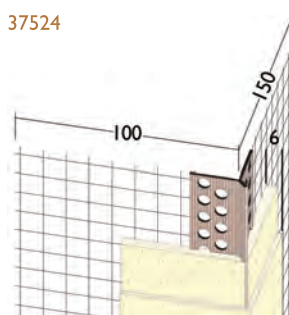
37521



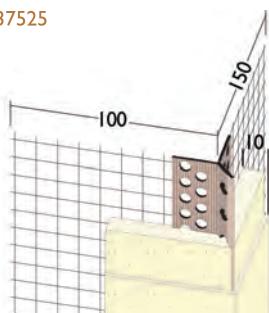
37523



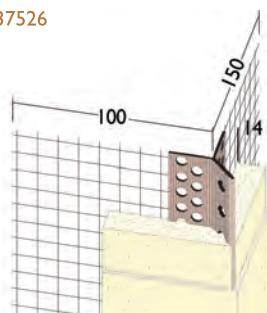
37524



37525



37526

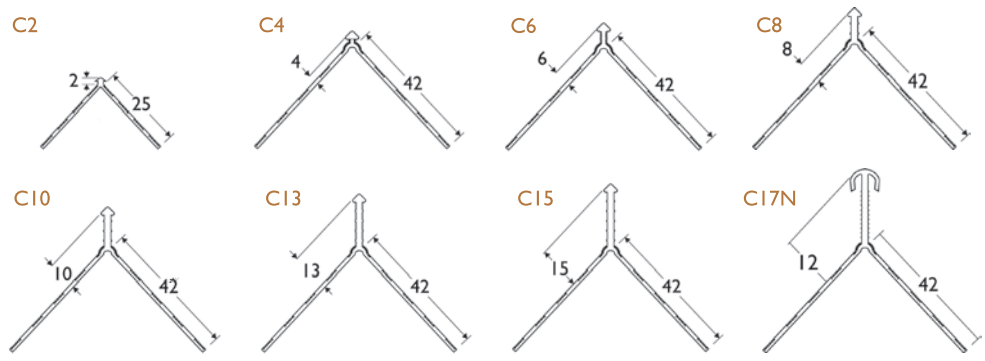


| PVC Ref. number | Render depth mm | Glass fibre mesh mm | Length m | Quantity per box |
|-----------------|-----------------|---------------------|----------|------------------|
| 37521 | 3 | 100/150 | 2.5 | 50 |
| 37523 | 6 | 80/120 | 2.5 | 50 |
| 37524 | 6 | 100/150 | 2.5 | 50 |
| 37525 | 10 | 100/150 | 2.5 | 25 |
| 37526 | 14 | 100/150 | 2.5 | 25 |



**NOW
AVAILABLE
IN 3 METRE
LENGTHS**

PVC Corner Beads



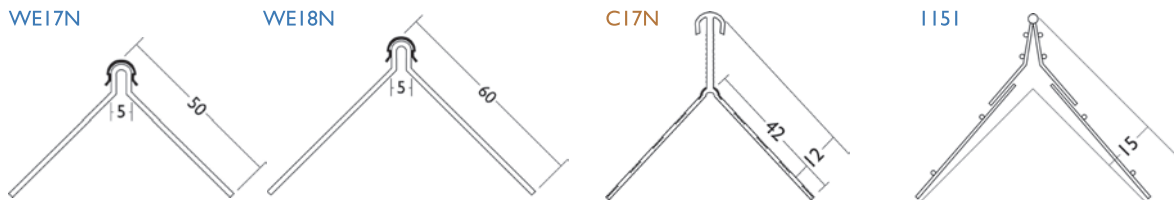
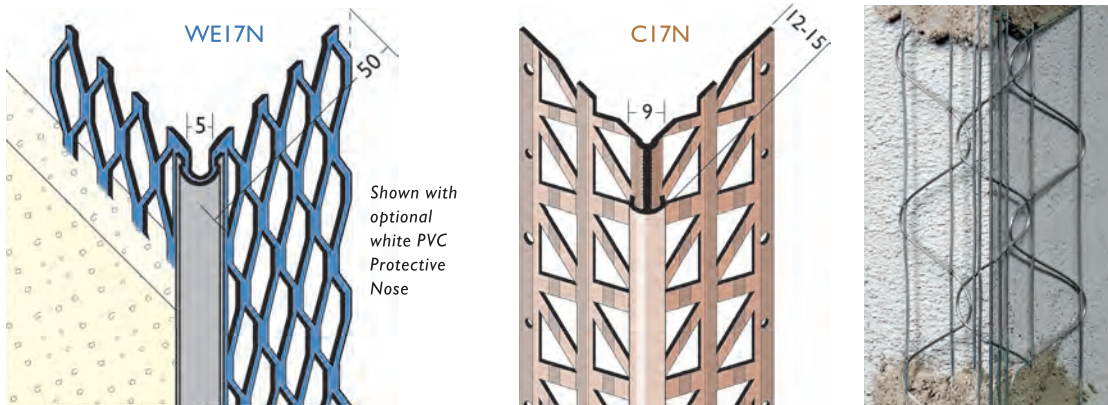
| Render depth mm | PVC Ref. number | WHITE Length m | IVORY Length m | LIGHT GREY Length m | DARK GREY Length m | TERRACOTTA Length m | Qty per box |
|-----------------|-----------------|----------------|----------------|---------------------|--------------------|---------------------|-------------|
| 2-3 | C2 | 2.5 | | | | | 25 |
| 4-6 | C4 | 2.5 | | | | | 25 |
| 6-8 | C6 | 2.5/3.0 | 2.5 | | | | 25 |
| 8-10 | C8 | 2.5 | 2.5 | | | | 25 |
| 10-12 | C10 | 2.5/3.0 | 2.5/3.0 | 2.5 | 2.5 | 2.5 | 25 |
| 13-15 | C13 | 2.5/3.0 | 2.5/3.0 | 2.5 | 2.5 | | 25 |
| 15-17 | C15 | 2.5/3.0 | 2.5/3.0 | 2.5 | 2.5 | 2.5 | 25 |
| 12-15 | C17N | 2.5 | | | | | 25 |

The perforation arris on the C8, C10, C13 and C15 aids the adhesion of the render.





Corner Beads

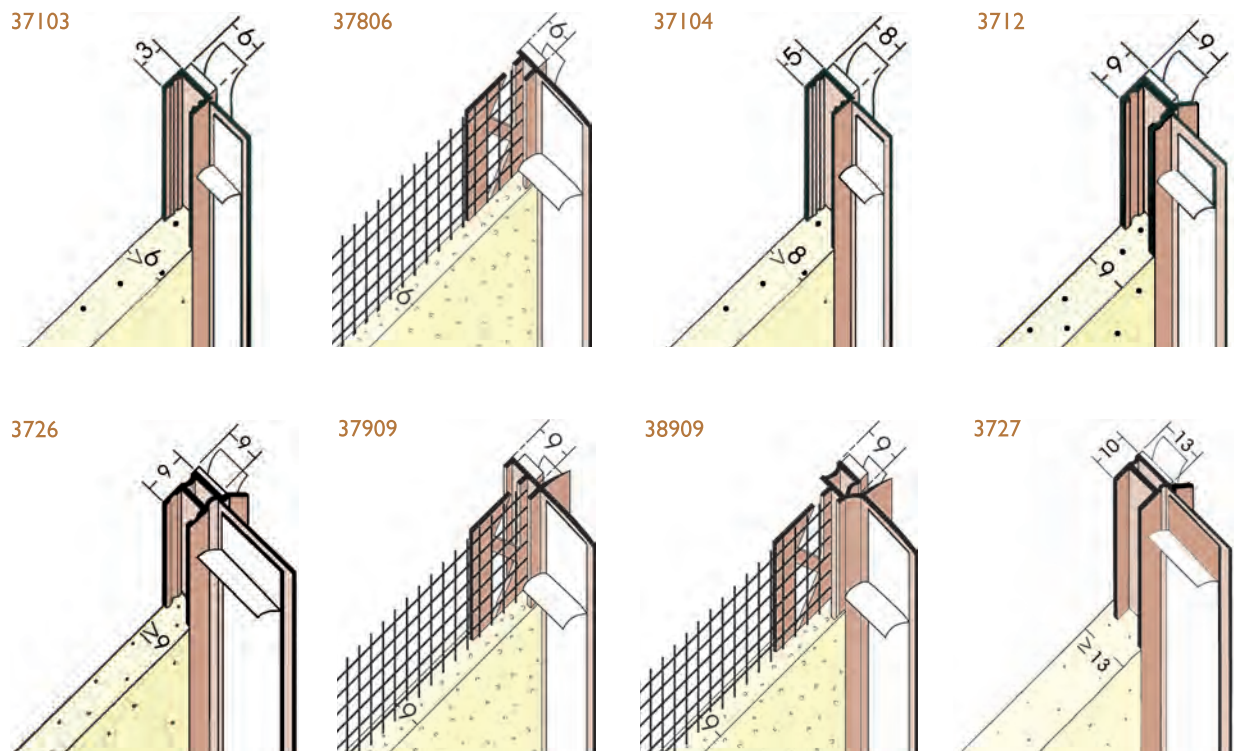


A wide range of corner beads are available. In PVC, powder coated Galvanised Steel, Aluminium or Stainless Steel with optional PVC nosing available on certain profiles, which will provide additional protection against abrasion and corrosion.

| Render depth mm | Galvanised Steel | Polyester Powder Coated Galvanised Steel | Polyester Powder Coated Galv. Steel with PVC Nosing | Stainless Steel Ref. number | Stainless Steel with PVC Nosing | PVC | Length m |
|-----------------|------------------|--|---|-----------------------------|---------------------------------|------|------------|
| 10 | I156 | | | | | | 2.5 / 2.95 |
| 15 | I151 | I157 | | I152 | | | 2.6 / 2.95 |
| 10-20 | | WE17 | WE17N | WE17SS | WE17NSS | | 3.0 |
| 10-25 | | WE18 | WE18N | WE18SS | WE18NSS | | 3.0 |
| 12-15 | | | | | | C17N | 2.5 |



PVC Window Frameseal Beads



Wemico self adhesive PVC profile for use on window reveals or door frames.

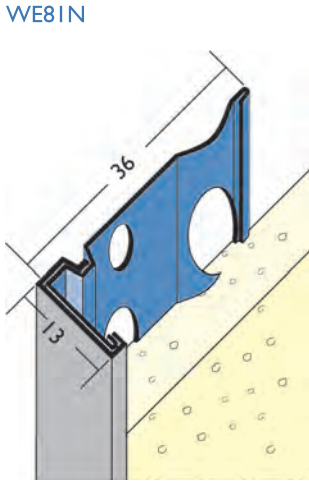
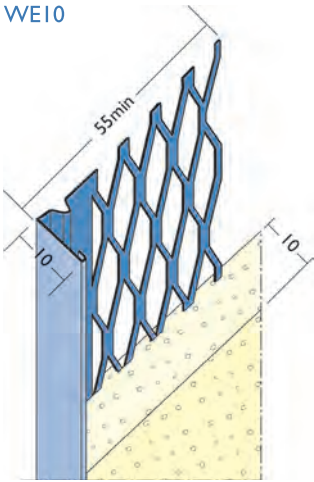
Attached to the frame with a foam tape, the frameseal has an adhesive strip to enable use of a protective film to be applied during the rendering process, which is snapped off on completion.

| Render thickness mm | PVC Ref. number | Length m | Quantity per box |
|---------------------|-----------------|----------|------------------|
| 6 | 37103 | 2.6 | 50 |
| 6 | 37806 | 2.6 | 50 |
| 8 | 37104 | 2.6 | 60 |
| 9 | 3712 | 2.6 | 60 |
| 9 | 3726 | 2.6 | 50 |
| 9 | 37909 | 2.6 | 50 |
| 9 | 38909 | 2.6 | 50 |
| 13 | 3727 | 2.6 | 40 |





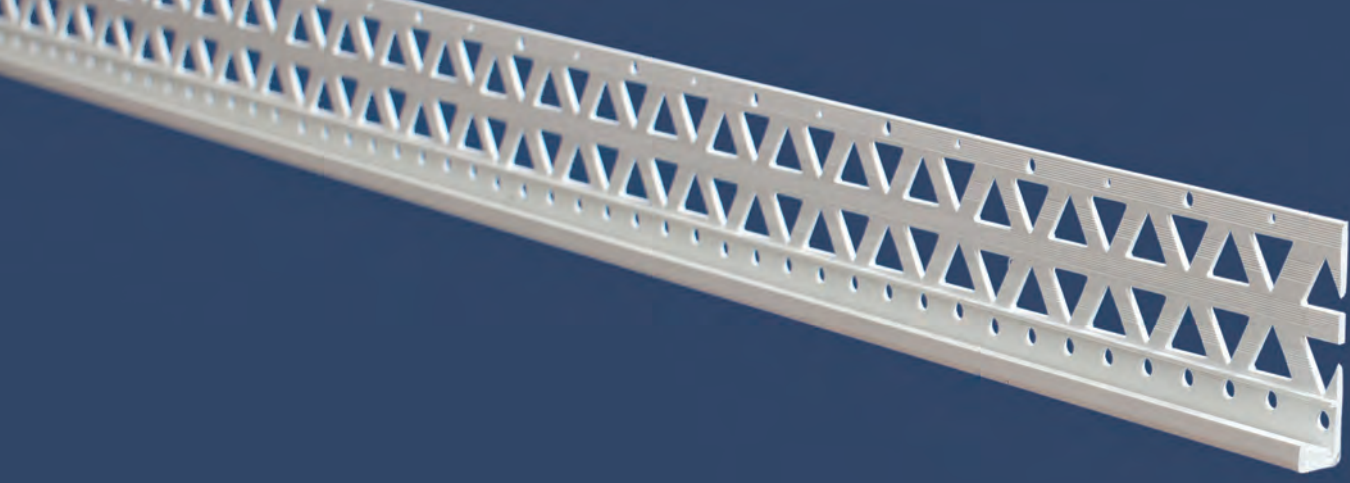
Render Stop Beads



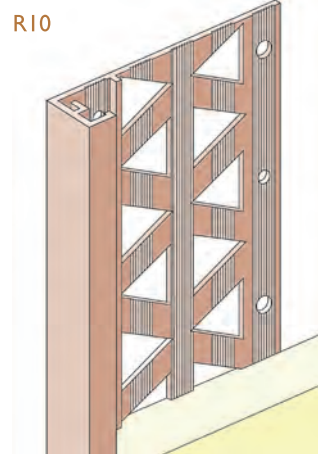
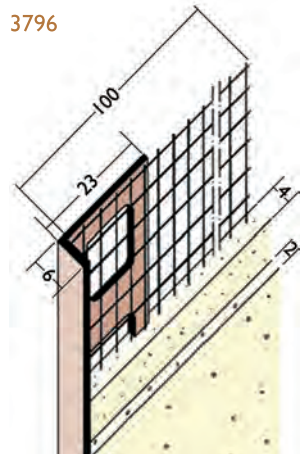
Shown with optional PVC Protective Nosing

Wemico stop beads made from powder coated Galvanised Steel or Stainless Steel, in a choice of mesh or perforated wing, with optional PVC nosing which will provide additional protection against abrasion and corrosion.

| Render depth mm | Polyester Powder Coated Galvanised Steel | Polyester Powder Coated Galv. Steel with PVC Nosing | Stainless Steel Ref. number | Stainless Steel with PVC Nosing | Length m | Wing type |
|-----------------|--|---|-----------------------------|---------------------------------|----------|-----------------|
| 10 | WE10 | WE10N | WE10SS | WE10NSS | 3.0 | Mesh wing |
| 13 | WE13 | WE13N | WE13SS | WE13NSS | 3.0 | Mesh wing |
| 16 | WE16 | WE16N | WE16SS | WE16NSS | 3.0 | Mesh wing |
| 20 | WE22 | WE22N | WE22SS | WE22NSS | 3.0 | Mesh wing |
| 6 | WE79 | | WE79SS | | 3.0 | Perforated wing |
| 10 | WE80 | WE80N | WE80SS | WE80NSS | 3.0 | Perforated wing |
| 13 | WE81 | WE81N | WE81SS | WE81NSS | 3.0 | Perforated wing |
| 16 | WE806 | WE806N | WE806SS | WE806NSS | 3.0 | Perforated wing |
| 20 | WE82 | WE82N | WE82SS | WE82NSS | 3.0 | Perforated wing |



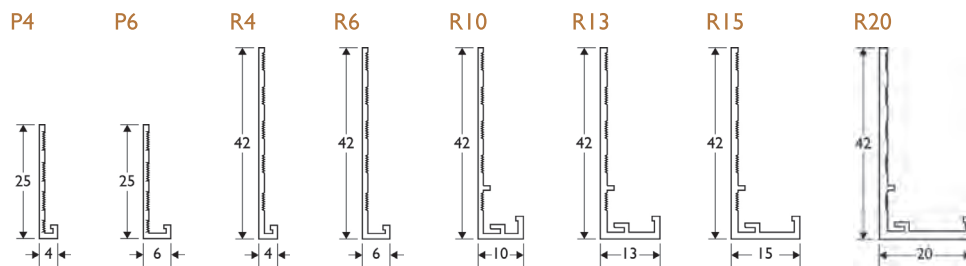
PVC Stop Beads

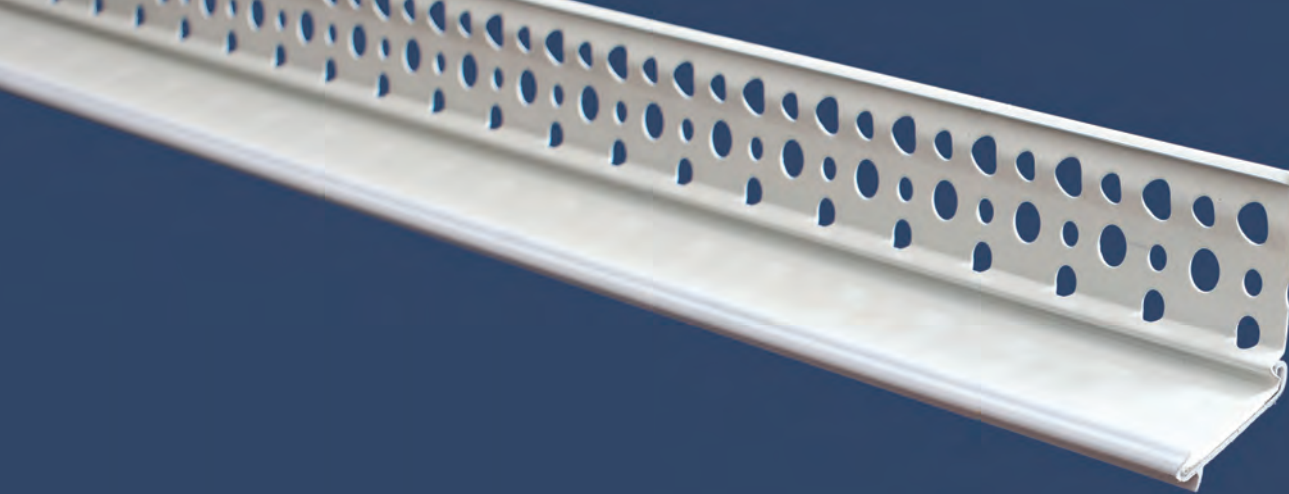


Wemico PVC render stop bead with alkali-resistant glassfibre mesh available in 4 different sizes.

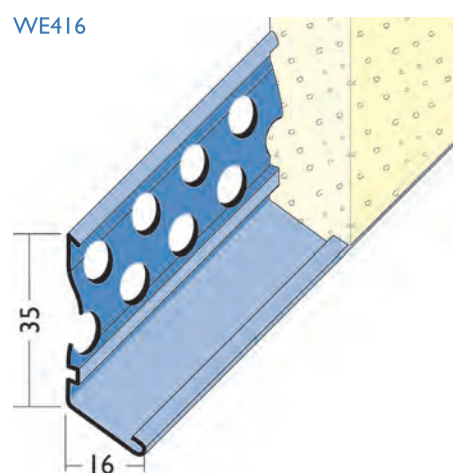
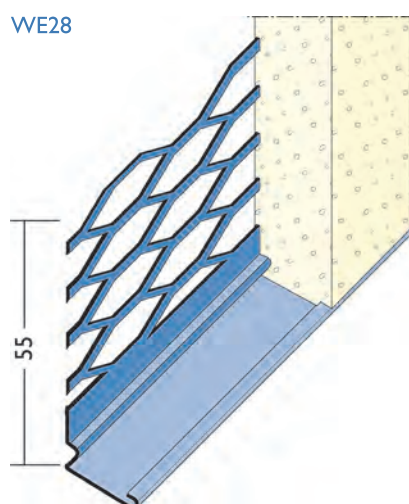
| Render depth mm | PVC Ref. number | Length m | Quantity per box |
|-----------------|-----------------|----------|------------------|
| 3 | 3793 | 2.5 | 50 |
| 6 | 3796 | 2.5 | 50 |
| 11 | 3791 | 2.5 | 40 |
| 14 | 37914 | 2.5 | 40 |

| Render depth mm | PVC Ref. number | WHITE Length m | IVORY Length m | LIGHT GREY Length m | DARK GREY Length m | TERRA-COTTA Length m | Qty per box |
|-----------------|-----------------|----------------|----------------|---------------------|--------------------|----------------------|-------------|
| 4 | P4 | 2.5 | 2.5 | | | | 25 |
| 6-8 | P6 | 2.5 | 2.5 | | | | 25 |
| 4 | R4 | 2.5 | 2.5 | | | | 25 |
| 6-8 | R6 | 2.5 / 3.0 | 2.5 / 3.0 | | 2.5 | | 25 |
| 10-12 | R10 | 2.5 / 3.0 | 2.5 / 3.0 | 2.5 | 2.5 | 2.5 | 25 |
| 13-15 | R13 | 2.5 / 3.0 | 2.5 / 3.0 | 2.5 | 2.5 | | 25 |
| 15-17 | R15 | 2.5 / 3.0 | 2.5 / 3.0 | 2.5 | 2.5 | 2.5 | 25 |
| 20-22 | R20 | 2.5 | 2.5 | | | | 25 |



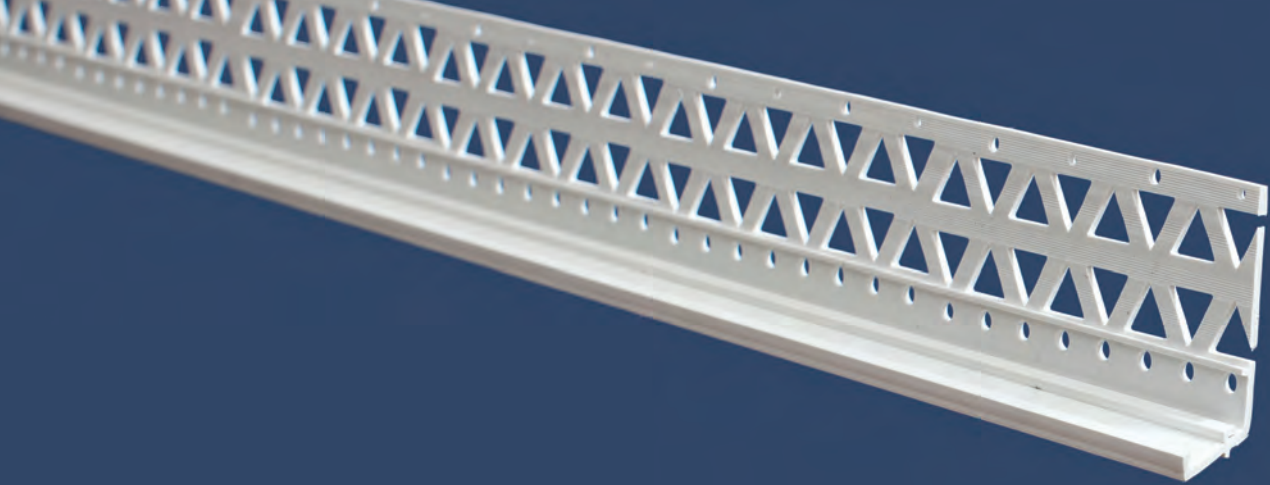


Render Bellcast / Drip Beads

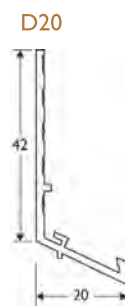
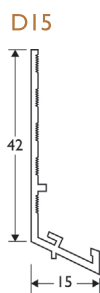
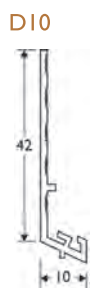
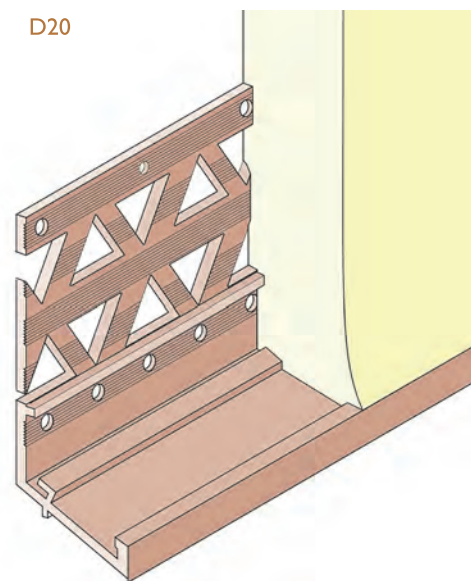


Wemico bellcast beads made from powder coated Galvanised Steel or Stainless Steel, in a choice of mesh or perforated wing, with optional PVC nosing which will provide additional protection against abrasion and corrosion.

| Render depth mm | Polyester Powder Coated Galvanised Steel | Polyester Powder Coated Galv. Steel with PVC Nosing | Stainless Steel Ref. number | Stainless Steel with PVC Nosing | Length m | Wing type |
|-----------------|--|---|-----------------------------|---------------------------------|----------|-----------------|
| 16 | WE28 | WE28N | WE28SS | WE28NSS | 3.0 | Mesh wing |
| 16-20 | WE29 | WE29N | WE29SS | WE29NSS | 3.0 | Mesh wing |
| 10-13 | WE61 | WE61N | WE61SS | WE61NSS | 3.0 | Perforated wing |
| 16-20 | WE62 | WE62N | WE62SS | WE62NSS | 3.0 | Perforated wing |
| 10 | WE410 | WE410N | WE410SS | WE410NSS | 3.0 | Perforated wing |
| 13 | WE413 | WE413N | WE413SS | WE413NSS | 3.0 | Perforated wing |
| 16 | WE416 | WE416N | WE416SS | WE416NSS | 3.0 | Perforated wing |

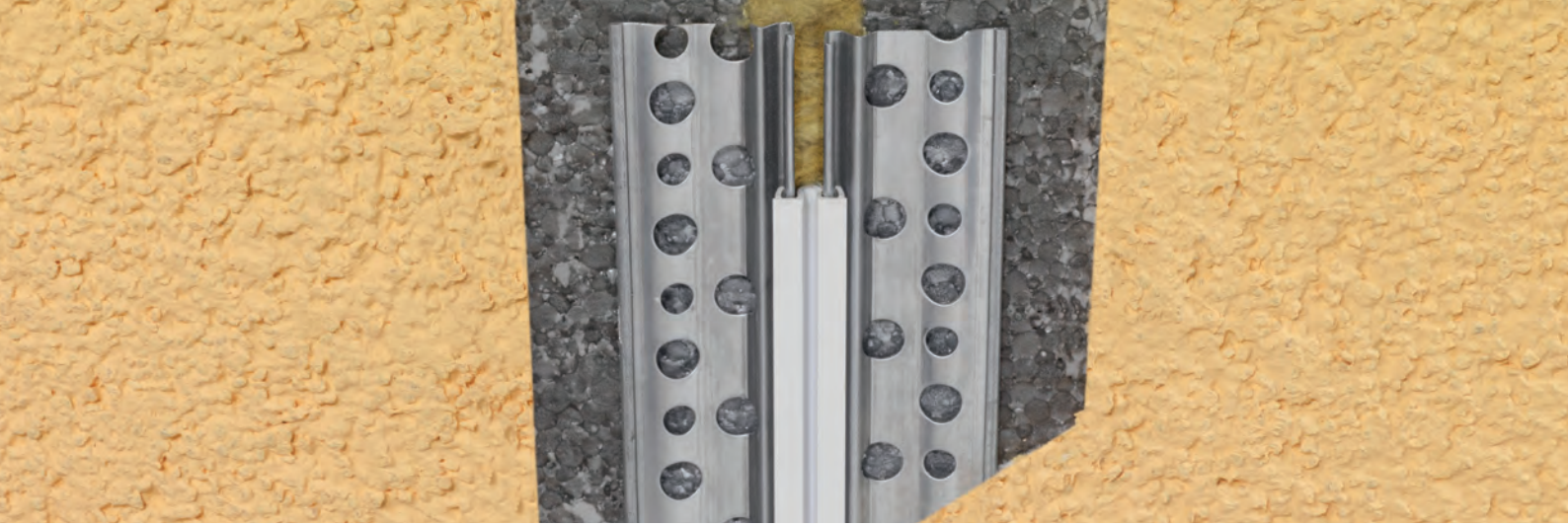


PVC Bellcast Beads



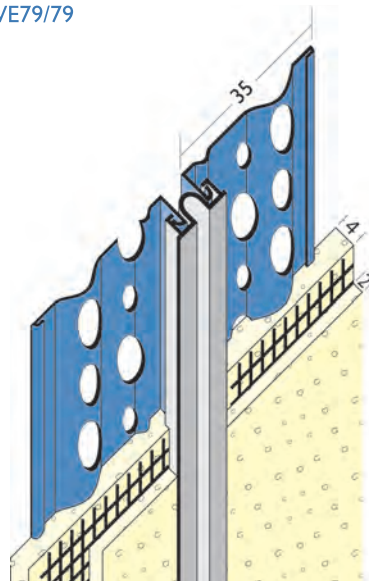
| Render depth mm | PVC Ref. number | WHITE Length m | IVORY Length m | LIGHT GREY Length m | DARK GREY Length m | TERRA-COTTA Length m | Qty per box |
|-----------------|-----------------|----------------|----------------|---------------------|--------------------|----------------------|-------------|
| 6-12 | D10 | 2.5 | 2.5 | | | | 25 |
| 10-17 | D15 | 2.5 | 2.5 | 2.5 | 2.5 | 2.5 | 25 |
| 13-22 | D20 | 2.5 | 2.5 | 2.5 | 2.5 | 2.5 | 25 |





Movement Beads

WE79/79



WE10/10



WE80/80



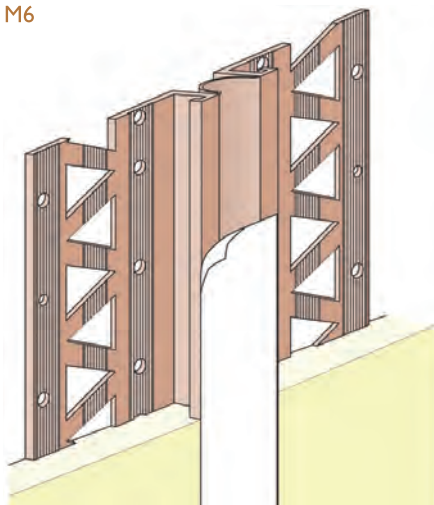
Designed to handle thermal movements, Wemico movement beads are made from powder coated Galvanised Steel or Stainless Steel, in a choice of mesh or perforated wing. For vertical use only.

| Render depth mm | Polyester Powder Coated Galv. Steel Ref. number | Length m | Stainless Steel Ref. number | Length m | Mesh type |
|-----------------|---|----------|-----------------------------|----------|-----------------|
| 6 | WE79/79 | 3.0 | WE79/79SS | 3.0 | Perforated wing |
| 10 | WE80/80 | 3.0 | WE80/80SS | 3.0 | Perforated wing |
| 13 | WE81/81 | 3.0 | WE81/81SS | 3.0 | Perforated wing |
| 16 | WE806/806 | 3.0 | WE806/806SS | 3.0 | Perforated wing |
| 20 | WE82/82 | 3.0 | WE82/82SS | 3.0 | Perforated wing |
| 10 | WE10/10 | 3.0 | WE10/10SS | 3.0 | Mesh wing |
| 13 | WE13/13 | 3.0 | WE13/13SS | 3.0 | Mesh wing |
| 16 | WE16/16 | 3.0 | WE16/16SS | 3.0 | Mesh wing |
| 20 | WE22/22 | 3.0 | WE22/22SS | 3.0 | Mesh wing |

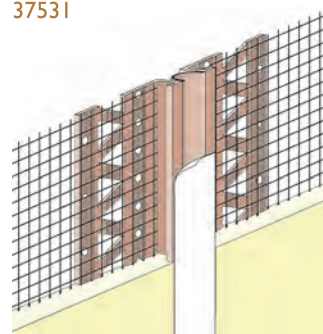


PVC Movement Beads

M6



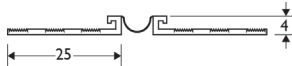
37531



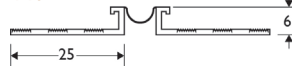
6mm available with Mesh - white only

Wemico PVC Movement Beads are designed to handle thermal movements. For vertical use only.

M4



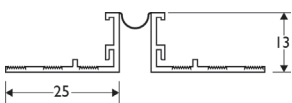
M6



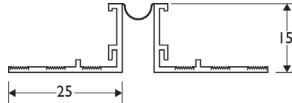
M10



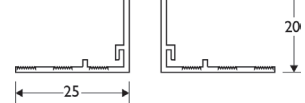
M13



M15



M20

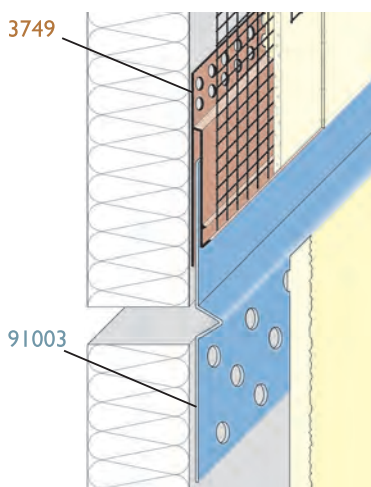


| Render depth mm | PVC Ref. number | WHITE Length m | IVORY Length m | LIGHT GREY Length m | DARK GREY Length m | TERRA-COTTA Length m | Qty per box |
|-----------------|-----------------|----------------|----------------|---------------------|--------------------|----------------------|-------------|
| 4-6 | M4 | 2.5 | | | | | 25 |
| 6-8 | M6 | 2.5 | 2.5 | | | | 25 |
| 10-12 | M10 | 2.5 | 2.5 | 2.5 | 2.5 | 2.5 | 25 |
| 13-15 | M13 | 2.5 | 2.5 | | | | 25 |
| 15-17 | M15 | 2.5 | 2.5 | 2.5 | 2.5 | 2.5 | 25 |
| 20-22 | M20 | 2.5 | 2.5 | | | | 25 |
| 6 | 37531 | 2.5 | | | | | 25 |

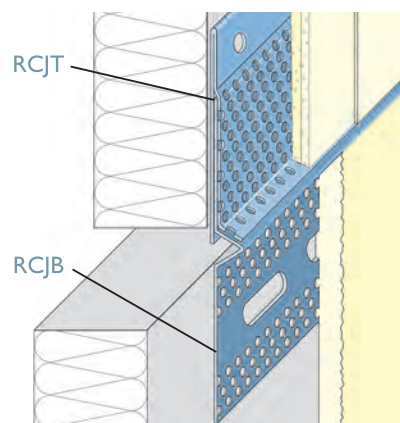




Render only Horizontal Compression Joint



Wemico render only compression joint for thin coat render. Ideally suited to timber framed buildings. The aluminium base section is supplied pre-coated white, but can be powder coated to any colour if required. Corner and Joint products are available on request.



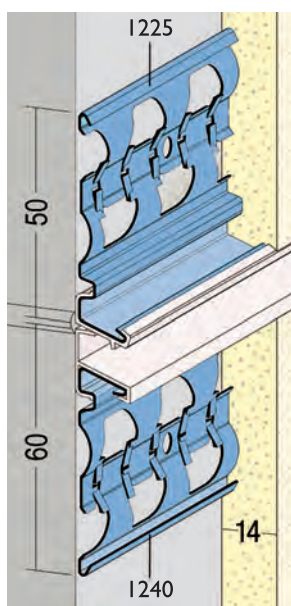
| | Render depth mm | PVC with Mesh Ref. number | Powder Coated Aluminium Ref. number | Length m | Qty per box |
|--------------|-----------------|---------------------------|-------------------------------------|----------|-------------|
| Top Section | 8 - 10 | 3749 | | 2.5 | 10 |
| Base Section | 8 - 10 | | 91003 | 2.5 | 10 |

| | Render depth mm | Powder Coated Aluminium Ref. number | Length m | Qty per box |
|--------------|-----------------|-------------------------------------|----------|-------------|
| Top Section | 6 | RCJT6mm | 2.5 | 10 |
| Base Section | 6 | RCJB6mm | 2.5 | 10 |
| Top Section | 10 | RCJT10mm | 2.5 | 10 |
| Base Section | 10 | RCJB10mm | 2.5 | 10 |

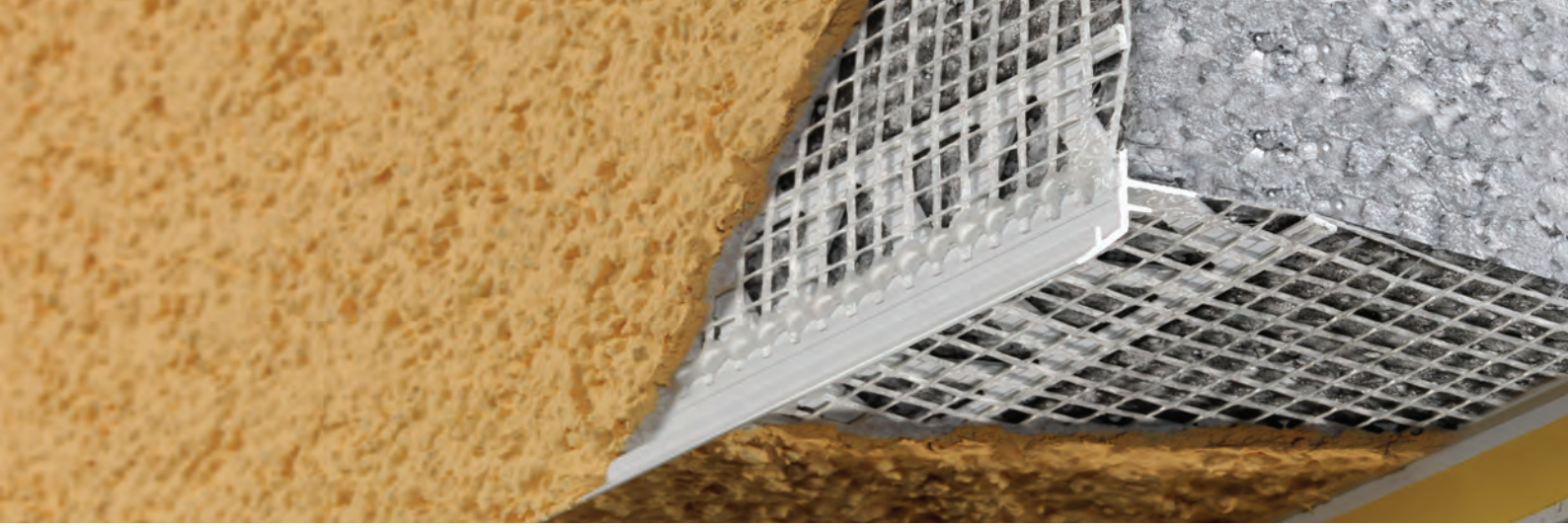
Other sizes made to order.

Horizontal Joint

Sliding joint profile made of galvanised steel with PVC nosing for interior and exterior plaster of 14 mm and thicker. The sliding joint profile is comprised of lower component 1240 and the upper base profile 1225.

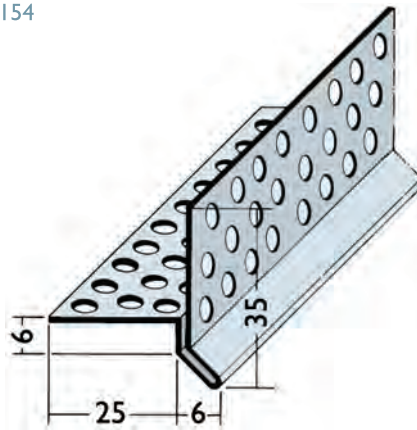


| Render depth mm | Galv. Steel Ref. number | Length m | Quantity per box |
|-----------------|-------------------------|----------|------------------|
| 14 | 1225 | 3.0 | 25 |
| 14 | 1240 | 3.0 | 25 |

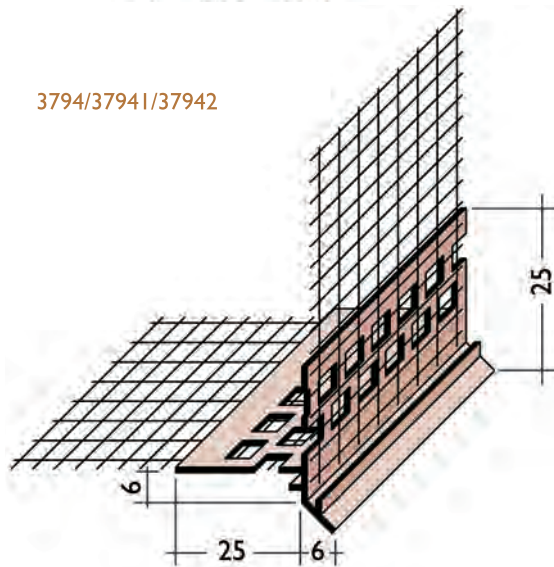


Window Head / Balcony Drip Profiles

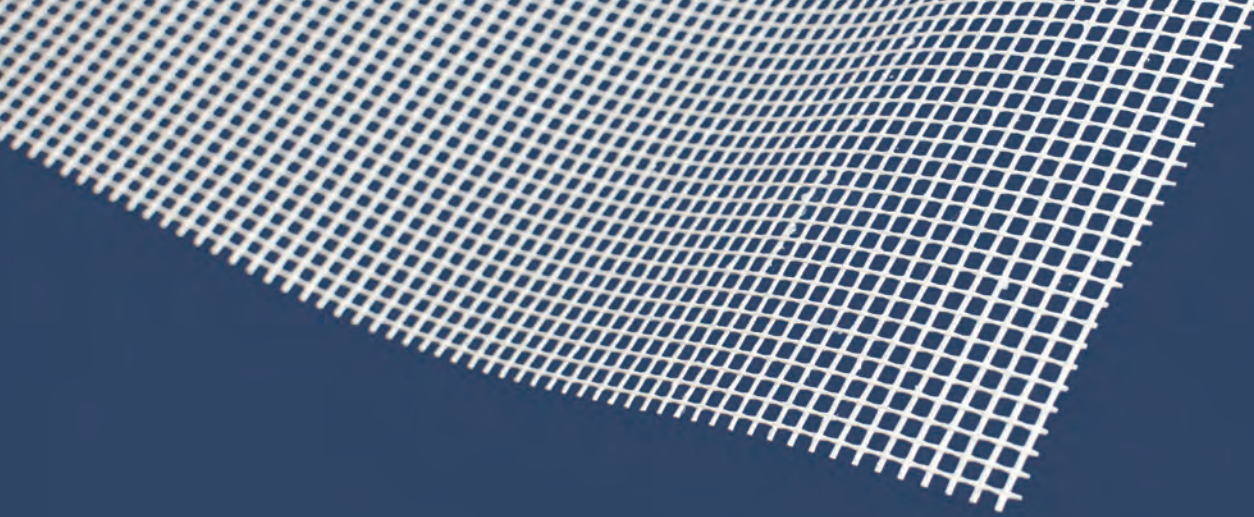
9011/2154



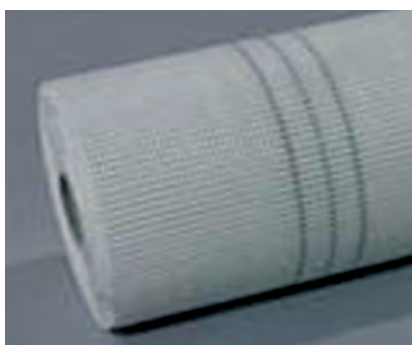
3794/37941/37942



| Render depth mm | Aluminium Ref. number | Stainless Steel Ref. number | PVC Ref. number | Length m | Quantity per box |
|-----------------|-----------------------|-----------------------------|-----------------|----------|------------------|
| 6 | 9011 | 2154 | | 2.5 | 20 |
| 6 | | | 3794 | 2.5 | 10 |
| 10 | | | 37941 | 2.5 | 10 |
| 14 | | | 37942 | 2.5 | 10 |



Alkali Resistant Fibre Mesh

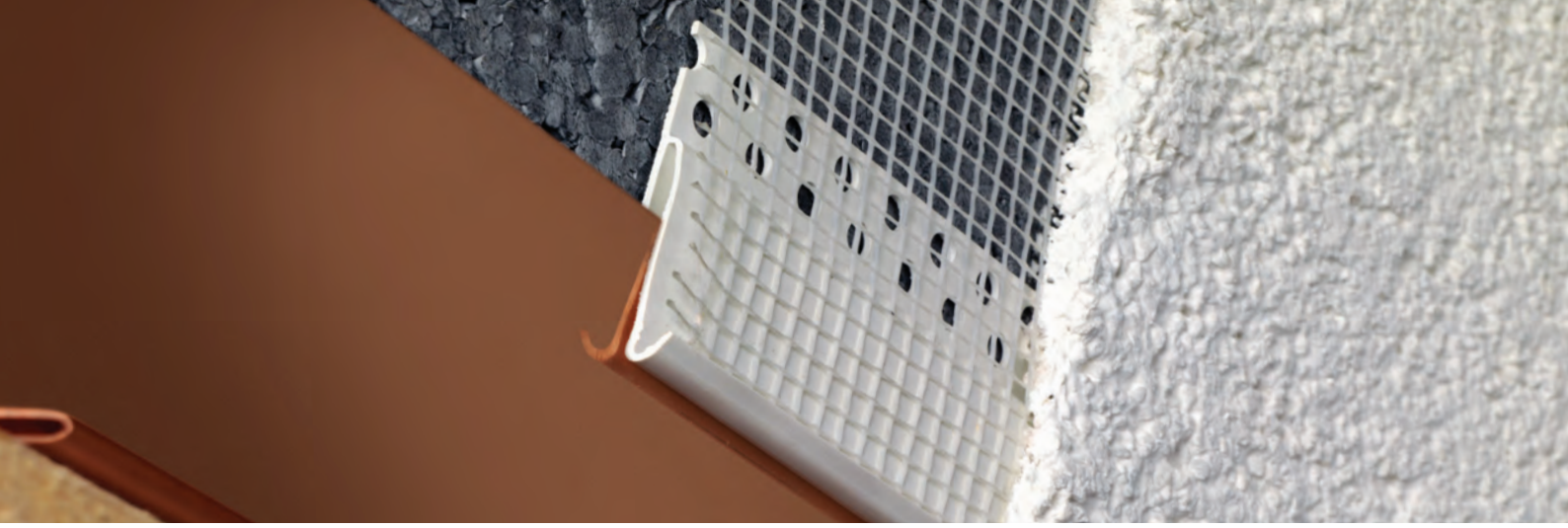


| | Mesh aperture mm | Weight | Roll size m |
|-----------------------------|------------------|---------------------|-------------|
| Alkali resistant fibre mesh | 4 x 4 | 160g/m ² | 50 x 1 |

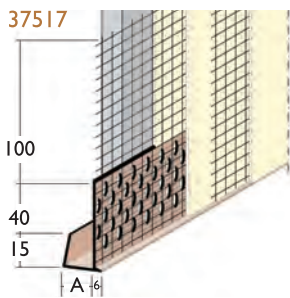
Insect Mesh



| | Mesh count per inch | Weight | Wire diameter mm | Roll size m |
|------------------------------------|---------------------|---------------------|------------------|-------------|
| 200mm Black fibreglass insect mesh | 18 x 16 | 120g/m ² | | 30 x 0.2 |
| Black fibreglass insect mesh | 18 x 16 | 120g/m ² | | 30 x 1.2 |
| Black fibreglass insect mesh | 18 x 16 | 120g/m ² | | 30 x 2.0 |
| Aluminium insect mesh | 18 x 16 | | 0.28 | 30 x 1.2 |
| Stainless insect mesh | 18 x 14 | | 0.22 | 30 x 1.2 |

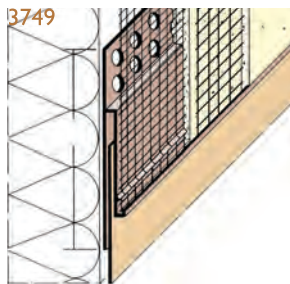


Facade & Edge Profiles

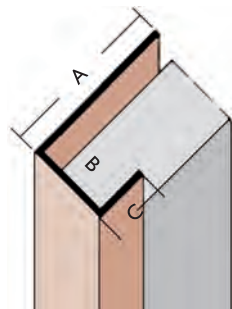


| PVC Ref. number | Dim A mm | Length m | No. per bundle |
|-----------------|----------|----------|----------------|
| 37513 | 9 | 2.5 | 25 |
| 37517 | 12.5 | 2.5 | 25 |

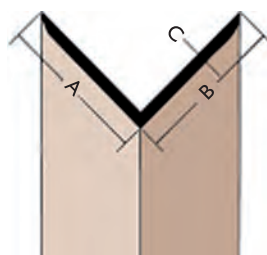
For our full range of Facade Profiles, please contact us



| PVC Ref. number | Length m | No. per bundle |
|-----------------|----------|----------------|
| 3749 | 2.5 | 20 |



| Dim A | Dim B | Dim C | Colour | PVC Ref. number | Mill finished Aluminium Ref. number | Length m | No. per bundle |
|-------|-------|-------|-------------------|-----------------|-------------------------------------|----------|----------------|
| 42 | 13 | 15 | Black or white | 3563 | | 2.5 | 10 |
| 42 | 20 | 15 | Black or white | 3502 | | 2.5 | 10 |
| 42 | 27 | 15 | Black or white | 3527 | | 2.5 | 10 |
| 40 | 13 | 13 | Mill finish alum. | | 9407 | 2.5 | 10 |
| 40 | 16 | 15 | Mill finish alum. | | 9408 | 2.5 | 10 |
| 40 | 20 | 15 | Mill finish alum. | | 9409 | 2.5 | 10 |
| 20 | 9.5 | 10 | Black or white | 3738 | | 2.5 | 50 |
| 20 | 12.5 | 10 | Black or white | 3741 | | 2.5 | 50 |
| 20 | 15 | 10 | Black or white | 3747 | | 2.5 | 50 |



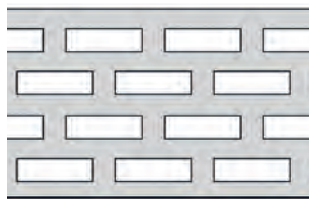
| Dim A | Dim B | Dim C | Colour | PVC Ref. number | Length m | No. per bundle |
|-------|-------|-------|----------------|-----------------|----------|----------------|
| 15 | 20 | 1.5 | Black or white | 3578 | 2.5 | 20 |
| 25 | 25 | 2.0 | Black or white | 3520 | 2.5 | 20 |
| 30 | 30 | 2.5 | Black or white | 3524 | 2.5 | 20 |
| 35 | 35 | 2.5 | Black or white | 3519 | 2.5 | 20 |
| 35 | 35 | 1.5 | Black or white | 3528 | 2.5 | 20 |
| 30 | 60 | 2.0 | Black or white | 3525 | 2.5 | 10 |
| 30 | 90 | 2.5 | Black or white | 3518 | 2.5 | 10 |
| 65 | 65 | 1.5 | Black or white | 3540 | 2.5 | 10 |



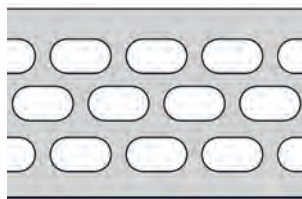
Ventilation Profiles

Scale: 1:1

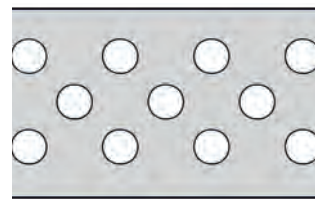
Square Perforation



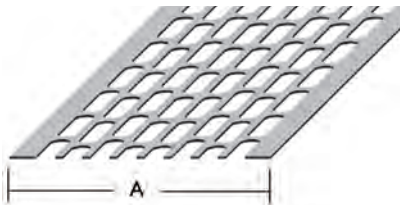
Oval Perforation



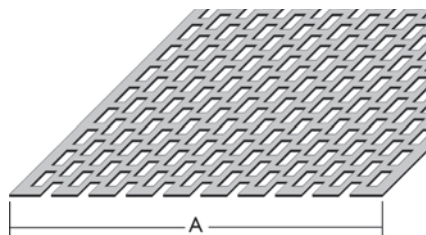
Round Perforation



| | | | |
|-------------------------|-----------------------------------|--------------------------------------|--------------------------|
| Hole Geometry | PVC 3 x 6mm Aluminium 3 x 10mm | PVC 4.5 x 8mm Aluminium 4.5 x 8mm | Aluminium 4.15 Ø |
| Small animal protection | yes | yes | yes |
| Insect protection | yes, up to small insects | yes, up to small insects | yes, up to small insects |



| Dim A | Aluminium Ref. number | Length m | No. per bundle | Free Ventilation cross-section | Dim A | Aluminium Ref. number | Length m | No. per bundle | Free Ventilation cross-section |
|-------|-----------------------|----------|----------------|--------------------------------|-------|-----------------------|----------|----------------|--------------------------------|
| 50 | 9625 | 2.5 | 20 | 221cm ² /lm | 90 | 9629 | 2.5 | 20 | 410cm ² /lm |
| 60 | 9626 | 2.5 | 20 | 284cm ² /lm | 100 | 9630 | 2.5 | 20 | 473cm ² /lm |
| 70 | 9627 | 2.5 | 20 | 315cm ² /lm | 120 | 9632 | 2.5 | 20 | 567cm ² /lm |
| 80 | 9628 | 2.5 | 20 | 378cm ² /lm | | | | | |



| Dim A | Mill finished Aluminium Ref. number | Black Coated Aluminium Ref. number | Length m | No. per bundle | Free Ventilation cross-section |
|-------|-------------------------------------|------------------------------------|----------|----------------|--------------------------------|
| 50 | 9320 | 9321 | 2.5 | 20 | 185cm ² /lm |
| 70 | 9040 | 9041 | 2.5 | 20 | 254cm ² /lm |
| 80 | 9322 | 9323 | 2.5 | 20 | 300cm ² /lm |
| 100 | 9324 | 9325 | 2.5 | 20 | 393cm ² /lm |
| 120 | 9095 | 9096 | 2.5 | 20 | 462cm ² /lm |

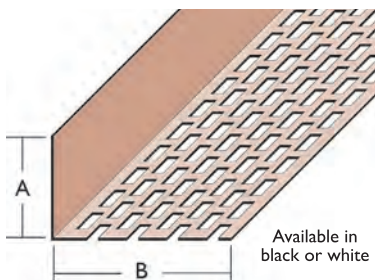
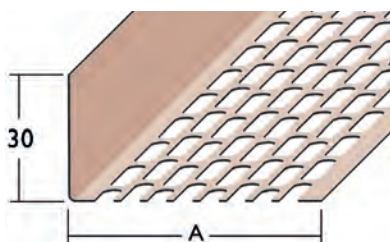
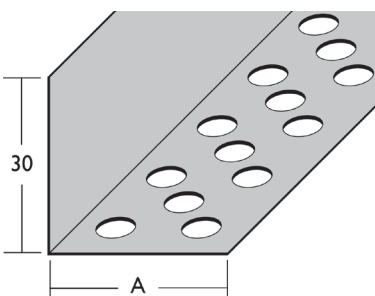
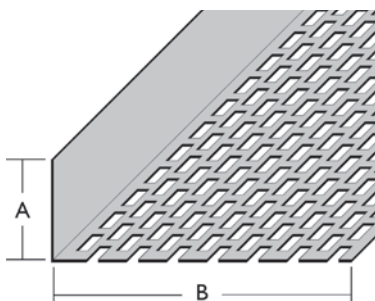
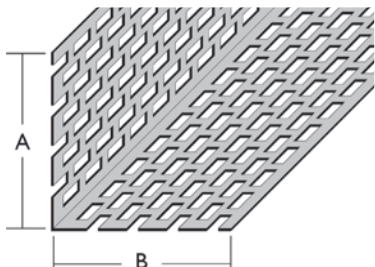
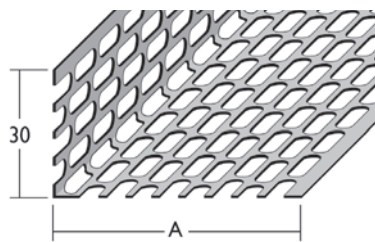


| Dim A | PVC Ref. number | Length m | Free Ventilation cross-section | Dim A | PVC Ref. number | Length m | Free Ventilation cross-section |
|-------|-----------------|----------|--------------------------------|-------|-----------------|----------|--------------------------------|
| 50 | 3686 | 5 | 269cm ² /lm | 50 | 3677 | 60 | 269cm ² /lm |
| 80 | 3685 | 5 | 426cm ² /lm | 80 | 3678 | 60 | 426cm ² /lm |
| 100 | 3681 | 5 | 538cm ² /lm | 100 | 3679 | 60 | 538cm ² /lm |
| 150 | 3682 | 5 | 648cm ² /lm | | | | |
| 180 | 3683 | 5 | 792cm ² /lm | | | | |

WEMICO

T: 01562 820123

Ventilation Profiles



| Dim A | Alum Ref. number | Length m | No. per bundle | Free Ventilation cross-section | Dim A | Alum Ref. number | Length m | No. per bundle | Free Ventilation cross-section |
|-------|------------------|----------|----------------|--------------------------------|-------|------------------|----------|----------------|--------------------------------|
| 30 | 9603 | 2.5 | 20 | 142/142cm ² /lm | 80 | 9608 | 2.5 | 20 | 126/378cm ² /lm |
| 40 | 9604 | 2.5 | 20 | 126/189cm ² /lm | 90 | 9609 | 2.5 | 20 | 126/441cm ² /lm |
| 50 | 9605 | 2.5 | 20 | 126/252cm ² /lm | 100 | 9610 | 2.5 | 20 | 126/504cm ² /lm |
| 60 | 9606 | 2.5 | 20 | 126/284cm ² /lm | 120 | 9612 | 2.5 | 20 | 126/599cm ² /lm |
| 70 | 9607 | 2.5 | 20 | 126/347cm ² /lm | | | | | |

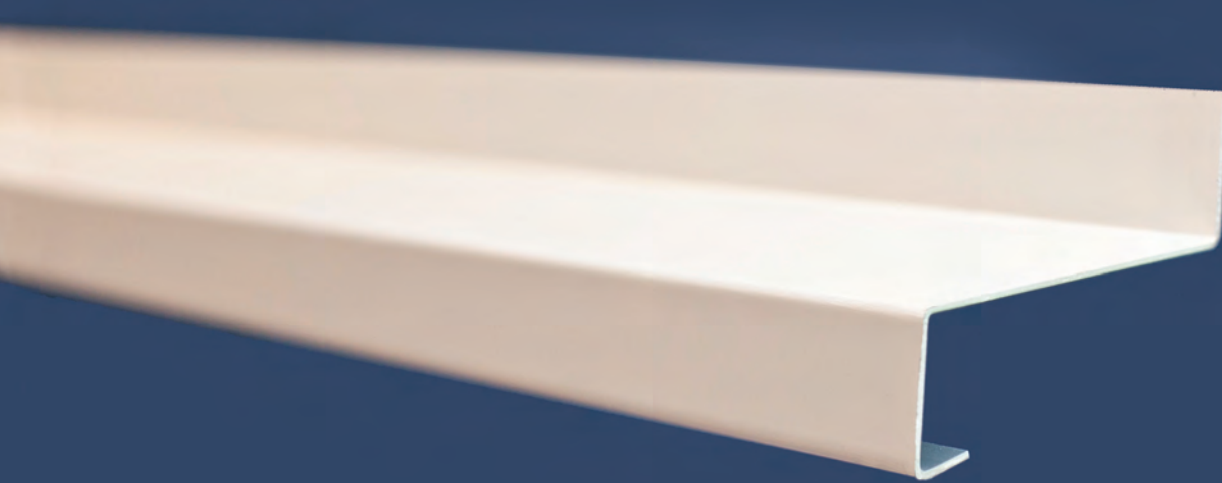
| Dim A | Dim B | Mill finished Aluminium Ref. number | Black coated Aluminium Ref. number | Length m | No. per bundle | Free Ventilation cross-section |
|-------|-------|-------------------------------------|------------------------------------|----------|----------------|--------------------------------|
| 30 | 30 | 9309 | | 2.5 | 20 | 92/92cm ² /lm |
| 30 | 40 | 9301 | 9300 | 2.5 | 20 | 92/139cm ² /lm |
| 30 | 50 | 9071 | 9043 | 2.5 | 20 | 92/185cm ² /lm |
| 50 | 50 | 9073 | 9046 | 2.5 | 20 | 185/185cm ² /lm |
| 50 | 70 | 9302 | 9303 | 2.5 | 20 | 185/255cm ² /lm |

| Dim A | Dim B | Mill finished Aluminium Ref. number | Black coated Aluminium Ref. number | Length m | No. per bundle | Free Ventilation cross-section |
|-------|-------|-------------------------------------|------------------------------------|----------|----------------|--------------------------------|
| 30 | 60 | 9330 | 9331 | 2.5 | 10 | 208cm ² /lm |
| 30 | 70 | 9072 | 9044 | 2.5 | 20 | 254cm ² /lm |
| 30 | 90 | 9306 | | 2.5 | 20 | 346cm ² /lm |
| 30 | 100 | 9332 | 9333 | 2.5 | 10 | 393cm ² /lm |
| 30 | 120 | 9334 | 9335 | 2.5 | 10 | 462cm ² /lm |
| 10 | 50 | 9312 | | 2.5 | 20 | 185cm ² /lm |
| 10 | 70 | 9313 | | 2.5 | 20 | 254cm ² /lm |
| 10 | 90 | 9314 | | 2.5 | 20 | 346cm ² /lm |

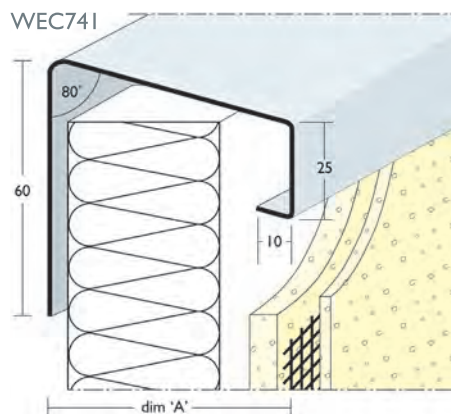
| Dim A | Mill finished Aluminium Ref. number | Length m | No. per bundle | Free Ventilation cross-section |
|-------|-------------------------------------|----------|----------------|--------------------------------|
| 25 | WEM9325 | 2.5 | 10 | 446.37cm ² L/M |
| 38 | WEM9338 | 2.5 | 10 | 446.37cm ² L/M |

| Dim A | PVC Ref. number | Length m | No. per bundle | Free Ventilation cross-section |
|-------|-----------------|----------|----------------|--------------------------------|
| 30 | 3830 | 2.5 | 20 | 94cm ² /lm |
| 50 | 3832 | 2.5 | 20 | 220cm ² /lm |
| 60 | 3833 | 2.5 | 20 | 252cm ² /lm |
| 70 | 3834 | 2.5 | 20 | 310cm ² /lm |
| 90 | 3836 | 2.5 | 20 | 410cm ² /lm |

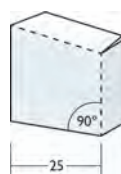
| Dim A | Dim B | PVC Ref. number | Length m | No. per bundle | Free Ventilation cross-section |
|-------|-------|-----------------|----------|----------------|--------------------------------|
| 25 | 25 | 3614 | 2.5 | 20 | 112cm ² /lm |
| 30 | 30 | 3612 | 2.5 | 20 | 134cm ² /lm |
| 30 | 50 | 3610 | 2.5 | 20 | 246cm ² /lm |
| 30 | 60 | 3611 | 2.5 | 10 | 291cm ² /lm |
| 30 | 70 | 3613 | 2.5 | 10 | 358cm ² /lm |
| 30 | 90 | 3617 | 2.5 | 10 | 470cm ² /lm |



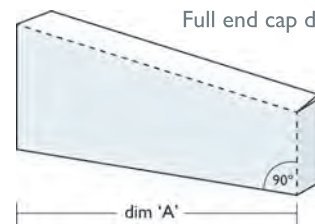
Standard Trims & Flashings



Push fit end cap detail



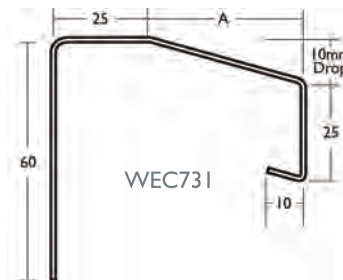
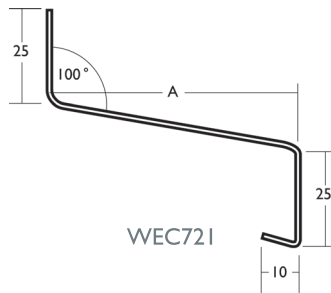
Full end cap detail



Suitable for most conditions requiring the weathering of external wall insulation systems and rendering. Aluminium white coated with peel-off low tack film to protect the section during transportation and fixing on-site.

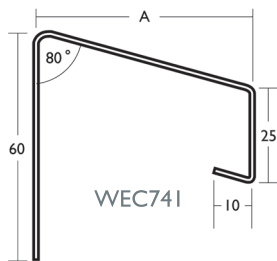
Pre-cut lengths, push-fit or welded end caps are available on request. Joining pieces to suit any section can be supplied where continuous lengths of flashings are installed. Clips can be supplied to retain the projecting nose of the section if required.

Larger sizes, increased thickness or variations on any of these profiles can be manufactured to your specification, and powder coated to any standard RAL colour.

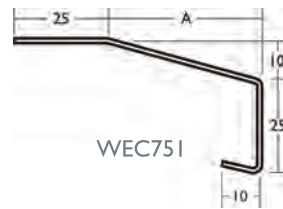


| 'A' mm | White Coated 1.2mm Aluminium | Length m |
|--------|------------------------------|----------|
| 50 | WEC721/50 | 2.5 |
| 60 | WEC721/60 | 2.5 |
| 70 | WEC721/70 | 2.5 |
| 80 | WEC721/80 | 2.5 |
| 90 | WEC721/90 | 2.5 |
| 100 | WEC721/100 | 2.5 |
| 110 | WEC721/110 | 2.5 |
| 120 | WEC721/120 | 2.5 |
| 130 | WEC721/130 | 2.5 |

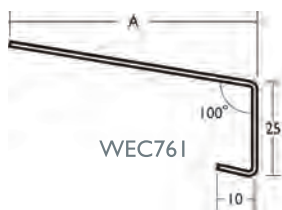
| 'A' mm | Overall width | White Coated 1.2mm Aluminium | Length m |
|--------|---------------|------------------------------|----------|
| 25 | 50 | WEC731/25 | 2.5 |
| 35 | 60 | WEC731/35 | 2.5 |
| 45 | 70 | WEC731/45 | 2.5 |
| 55 | 80 | WEC731/55 | 2.5 |
| 65 | 90 | WEC731/65 | 2.5 |
| 75 | 100 | WEC731/75 | 2.5 |
| 85 | 110 | WEC731/85 | 2.5 |
| 95 | 120 | WEC731/95 | 2.5 |
| 105 | 130 | WEC731/105 | 2.5 |



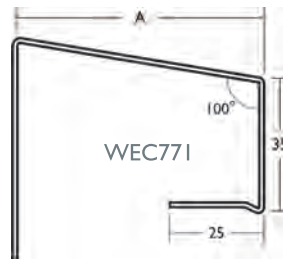
| 'A' mm | White Coated 1.2mm Aluminium | Length m |
|--------|------------------------------|----------|
| 50 | WEC741/50 | 2.5 |
| 60 | WEC741/60 | 2.5 |
| 70 | WEC741/70 | 2.5 |
| 80 | WEC741/80 | 2.5 |
| 90 | WEC741/90 | 2.5 |
| 100 | WEC741/100 | 2.5 |
| 110 | WEC741/110 | 2.5 |
| 120 | WEC741/120 | 2.5 |
| 130 | WEC741/130 | 2.5 |



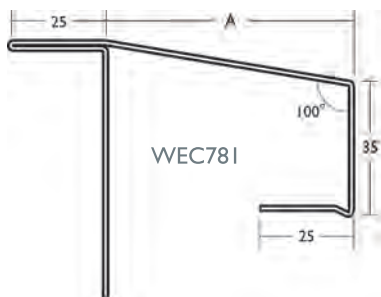
| 'A' mm | Overall width | White Coated 1.2mm Aluminium | Length m |
|--------|---------------|------------------------------|----------|
| 25 | 50 | WEC751/25 | 2.5 |
| 35 | 60 | WEC751/35 | 2.5 |
| 45 | 70 | WEC751/45 | 2.5 |
| 55 | 80 | WEC751/55 | 2.5 |
| 65 | 90 | WEC751/65 | 2.5 |
| 75 | 100 | WEC751/75 | 2.5 |
| 85 | 110 | WEC751/85 | 2.5 |
| 95 | 120 | WEC751/95 | 2.5 |
| 105 | 130 | WEC751/105 | 2.5 |
| 115 | 140 | WEC751/115 | 2.5 |
| 125 | 150 | WEC751/125 | 2.5 |



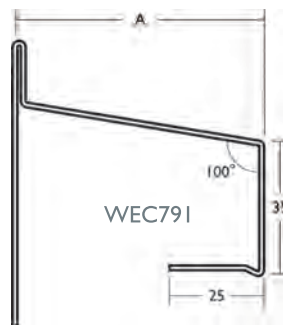
| 'A' mm | White Coated 1.2mm Aluminium | Length m |
|--------|------------------------------|----------|
| 30 | WEC761/30 | 2.5 |
| 40 | WEC761/40 | 2.5 |
| 50 | WEC761/50 | 2.5 |
| 60 | WEC761/60 | 2.5 |
| 70 | WEC761/70 | 2.5 |
| 80 | WEC761/80 | 2.5 |
| 90 | WEC761/90 | 2.5 |
| 100 | WEC761/100 | 2.5 |
| 110 | WEC761/110 | 2.5 |
| 120 | WEC761/120 | 2.5 |
| 130 | WEC761/130 | 2.5 |



| 'A' mm | White Coated 1.2mm Aluminium | Length m |
|--------|------------------------------|----------|
| 30 | WEC771/30 | 2.5 |
| 40 | WEC771/40 | 2.5 |
| 50 | WEC771/50 | 2.5 |
| 60 | WEC771/60 | 2.5 |
| 70 | WEC771/70 | 2.5 |
| 80 | WEC771/80 | 2.5 |
| 90 | WEC771/90 | 2.5 |
| 100 | WEC771/100 | 2.5 |
| 110 | WEC771/110 | 2.5 |
| 120 | WEC771/120 | 2.5 |
| 130 | WEC771/130 | 2.5 |



| 'A' mm | Overall width | White Coated 1.2mm Aluminium | Length m |
|--------|---------------|------------------------------|----------|
| 25 | 50 | WEC781/25 | 2.5 |
| 35 | 60 | WEC781/35 | 2.5 |
| 45 | 70 | WEC781/45 | 2.5 |
| 55 | 80 | WEC781/55 | 2.5 |
| 65 | 90 | WEC781/65 | 2.5 |
| 75 | 100 | WEC781/75 | 2.5 |
| 85 | 110 | WEC781/85 | 2.5 |
| 95 | 120 | WEC781/95 | 2.5 |
| 105 | 130 | WEC781/105 | 2.5 |
| 115 | 140 | WEC781/115 | 2.5 |
| 125 | 150 | WEC781/125 | 2.5 |



| 'A' mm | White Coated 1.2mm Aluminium | Length m |
|--------|------------------------------|----------|
| 30 | WEC791/30 | 2.5 |
| 40 | WEC791/40 | 2.5 |
| 50 | WEC791/50 | 2.5 |
| 60 | WEC791/60 | 2.5 |
| 70 | WEC791/70 | 2.5 |
| 80 | WEC791/80 | 2.5 |
| 90 | WEC791/90 | 2.5 |
| 100 | WEC791/100 | 2.5 |
| 110 | WEC791/110 | 2.5 |
| 120 | WEC791/120 | 2.5 |
| 130 | WEC791/130 | 2.5 |

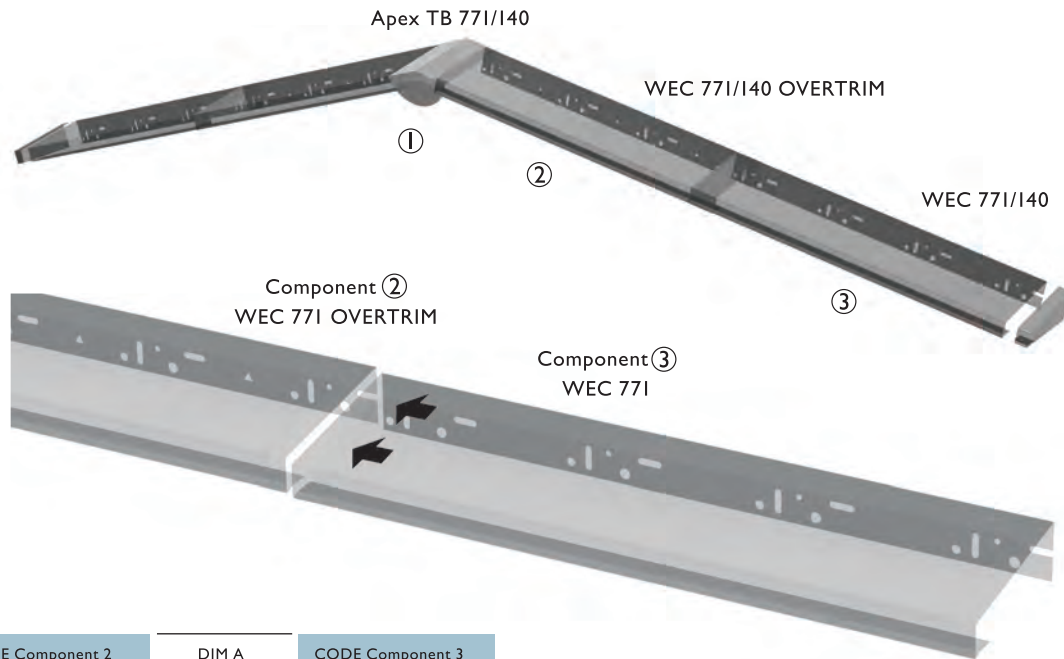


Apex System

The WEC 771 range of verge trims and apices are designed to improve the weather tightness of the system and reduce the use of sealants and future maintenance issues. The system consists of 3 basic components:

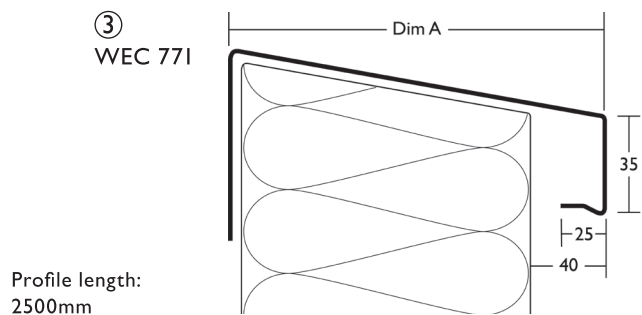
- ① Apex profile (APEX TB) (APEX771/200)
- ② Over trim (WEC 771 OVERTRIM)
- ③ Verge trim (WEC 771)

The 3 components slide inside one another to create overlaps. All of the profiles are manufactured in 1.2mm pre-coated white aluminium, and can be manufactured to any standard RAL colour as required. Apex profiles are partly bent, and can be adjusted by bending them by hand to obtain the required angle to suit the application.



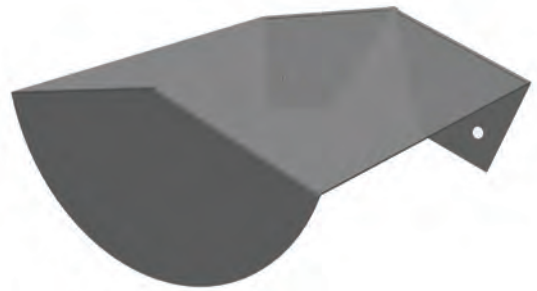
| CODE Component 2 | DIM A | CODE Component 3 |
|----------------------|-------|------------------|
| WEC 771/50 OVERTRIM | 50mm | WEC 771/50 |
| WEC 771/60 OVERTRIM | 60mm | WEC 771/60 |
| WEC 771/70 OVERTRIM | 70mm | WEC 771/70 |
| WEC 771/80 OVERTRIM | 80mm | WEC 771/80 |
| WEC 771/90 OVERTRIM | 90mm | WEC 771/90 |
| WEC 771/100 OVERTRIM | 100mm | WEC 771/100 |
| WEC 771/110 OVERTRIM | 110mm | WEC 771/110 |
| WEC 771/120 OVERTRIM | 120mm | WEC 771/120 |
| WEC 771/130 OVERTRIM | 130mm | WEC 771/130 |
| WEC 771/140 OVERTRIM | 140mm | WEC 771/140 |
| WEC 771/150 OVERTRIM | 150mm | WEC 771/150 |
| WEC 771/160 OVERTRIM | 160mm | WEC 771/160 |
| WEC 771/170 OVERTRIM | 170mm | WEC 771/170 |
| WEC 771/180 OVERTRIM | 180mm | WEC 771/180 |
| WEC 771/190 OVERTRIM | 190mm | WEC 771/190 |
| WEC 771/200 OVERTRIM | 200mm | WEC 771/200 |

WEC 771 Profile slides into the WEC 771 OVERTRIM
Sealant must be applied to the inside edge of the WEC 771 OVERTRIM.



Adjustable Apex - 771 with Fixing Lugs

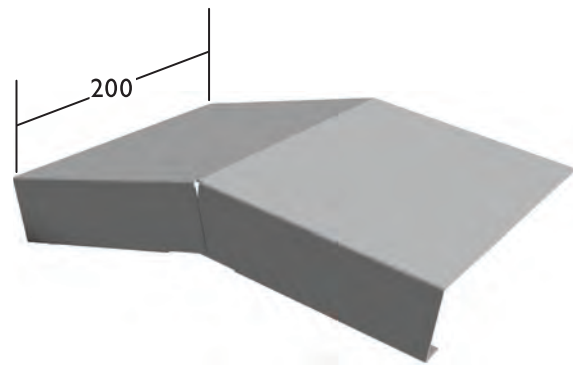
| CODE | PRODUCT TO SUIT |
|-----------------|----------------------|
| APEX TB 771/60 | WEC 771/60 OVERTRIM |
| APEX TB 771/70 | WEC 771/70 OVERTRIM |
| APEX TB 771/80 | WEC 771/780 OVERTRIM |
| APEX TB 771/90 | WEC 771/90 OVERTRIM |
| APEX TB 771/100 | WEC 771/100 OVERTRIM |
| APEX TB 771/110 | WEC 771/110 OVERTRIM |
| APEX TB 771/120 | WEC 771/120 OVERTRIM |
| APEX TB 771/130 | WEC 771/130 OVERTRIM |
| APEX TB 771/140 | WEC 771/140 OVERTRIM |
| APEX TB 771/150 | WEC 771/150 OVERTRIM |
| APEX TB 771/160 | WEC 771/160 OVERTRIM |
| APEX TB 771/170 | WEC 771/170 OVERTRIM |
| APEX TB 771/180 | WEC 771/180 OVERTRIM |
| APEX TB 771/190 | WEC 771/190 OVERTRIM |
| APEX TB 771/200 | WEC 771/200 OVERTRIM |



Adjustable Apex - 771/200

| APEX CODE | PRODUCT TO SUIT |
|--------------|------------------|
| APEX 771/200 | WEC 771 OVERTRIM |

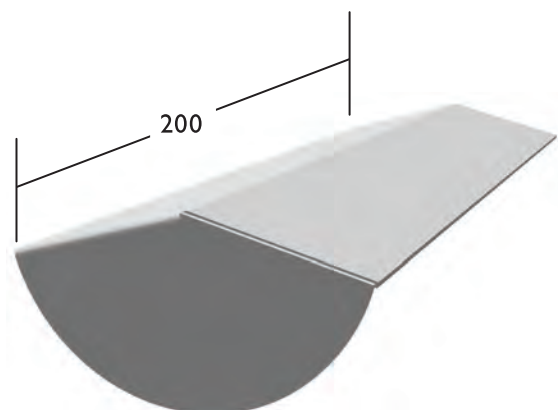
This profile can be used with any WEC 771/ OVERTRIM up to 200mm.
 The back of this profile will need to be cut on site to the required length and bent by hand to the required angle.



Apex 200 Curved

| APEX CODE | PRODUCT TO SUIT |
|-----------|---------------------------|
| APEX 200 | WEC 721/30 TO WEC 721/200 |
| | WEC 741/30 TO WEC 741/200 |
| | WEC 761/30 TO WEC 761/200 |
| | WEC 771/30 TO WEC 771/200 |
| | WEC 781/30 TO WEC 781/200 |
| | WEC 791/30 TO WEC 791/200 |

The back of this profile will need to be cut on site to the required length and bent by hand to the required angle.





Thermo-Pro[®] Fascia

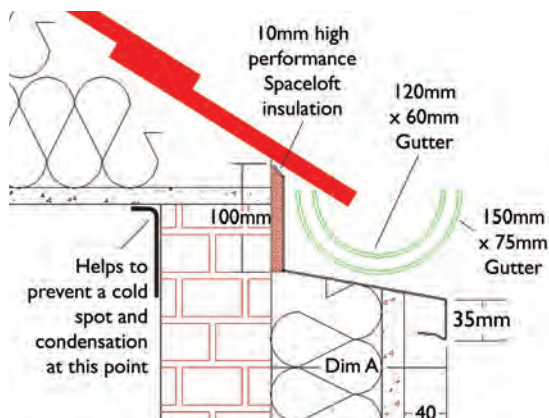
Thermo-Pro Fascia is an insulated gutter trim, used to insulate at roof level in the absence of a soffit on the property.

The existing gutter will need to be removed temporarily to allow the flashing to be installed.

If the gutter is in poor condition we would recommend replacing it to protect the new system.

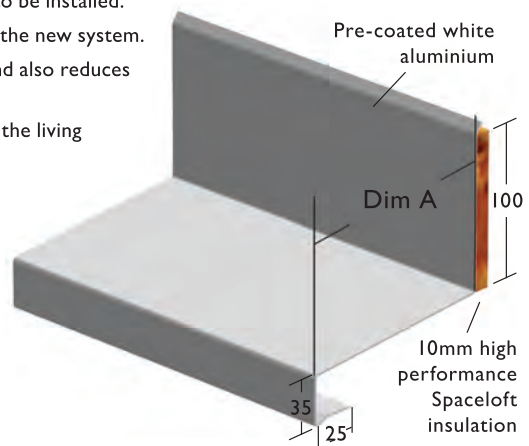
Installing this insulated profile dramatically reduces any risk of condensation and also reduces the linear thermal transmittance.

The interior temperature at this location is increased and will help to improve the living conditions and create a healthier indoor environment.



Made from 1.2mm pre-coated white aluminium.

Also available in different gauge materials and RAL colours.



Calculated ψ -Values for Thermo-Pro Fascia

| | EWIS Insulation between 90 - 160mm | | EWIS Insulation between 161 - 230mm | | EWIS Insulation between 231 - 300mm | |
|----------------------|--|--------------|--|--------------|--|--------------|
| | ψ - Value (W/m ² K ⁻¹) | Temp. Factor | ψ - Value (W/m ² K ⁻¹) | Temp. Factor | ψ - Value (W/m ² K ⁻¹) | Temp. Factor |
| No Thermo-Pro Fascia | 1.033 | 0.67 | 1.055 | 0.68 | 1.067 | 0.68 |
| Thermo-Pro Fascia | 0.419 | 0.85 | 0.435 | 0.87 | 0.444 | 0.88 |

Note: All values are in W/m²K⁻¹

STRAIGHT SECTION

| Pre-coated White Alum | Dim A | Complete System Size | Length |
|-----------------------|-------|----------------------|--------|
| TPF/100 | 100mm | 60mm | 2500mm |
| TPF/110 | 110mm | 70mm | 2500mm |
| TPF/120 | 120mm | 80mm | 2500mm |
| TPF/130 | 130mm | 90mm | 2500mm |
| TPF/140 | 140mm | 100mm | 2500mm |
| TPF/150 | 150mm | 110mm | 2500mm |
| TPF/160 | 160mm | 120mm | 2500mm |
| TPF/170 | 170mm | 130mm | 2500mm |
| TPF/180 | 180mm | 140mm | 2500mm |
| TPF/190 | 190mm | 150mm | 2500mm |
| TPF/200 | 200mm | 160mm | 2500mm |
| TPF/210 | 210mm | 170mm | 2500mm |
| TPF/220 | 220mm | 180mm | 2500mm |
| TPF/230 | 230mm | 190mm | 2500mm |
| TPF/240 | 240mm | 200mm | 2500mm |

EXTERNAL CORNER 90 DEGREE

| Pre-coated White Alum | Dim A |
|-----------------------|-------|
| TPF-EXT/100 | 100mm |
| TPF-EXT/110 | 110mm |
| TPF-EXT/120 | 120mm |
| TPF-EXT/130 | 130mm |
| TPF-EXT/140 | 140mm |
| TPF-EXT/150 | 150mm |
| TPF-EXT/160 | 160mm |
| TPF-EXT/170 | 170mm |
| TPF-EXT/180 | 180mm |
| TPF-EXT/190 | 190mm |
| TPF-EXT/200 | 200mm |
| TPF-EXT/210 | 210mm |
| TPF-EXT/220 | 220mm |
| TPF-EXT/230 | 230mm |
| TPF-EXT/240 | 240mm |

INTERNAL CORNER 90 DEGREE

| Pre-coated White Alum | Dim A |
|-----------------------|-------|
| TPF-INT/100 | 100mm |
| TPF-INT/110 | 110mm |
| TPF-INT/120 | 120mm |
| TPF-INT/130 | 130mm |
| TPF-INT/140 | 140mm |
| TPF-INT/150 | 150mm |
| TPF-INT/160 | 160mm |
| TPF-INT/170 | 170mm |
| TPF-INT/180 | 180mm |
| TPF-INT/190 | 190mm |
| TPF-INT/200 | 200mm |
| TPF-INT/210 | 210mm |
| TPF-INT/220 | 220mm |
| TPF-INT/230 | 230mm |
| TPF-INT/240 | 240mm |

JOINTS

| Pre-coated White Alum | Dim A |
|-----------------------|-------|
| TPF-J/100 | 100mm |
| TPF-J/110 | 110mm |
| TPF-J/120 | 120mm |
| TPF-J/130 | 130mm |
| TPF-J/140 | 140mm |
| TPF-J/150 | 150mm |
| TPF-J/160 | 160mm |
| TPF-J/170 | 170mm |
| TPF-J/180 | 180mm |
| TPF-J/190 | 190mm |
| TPF-J/200 | 200mm |
| TPF-J/210 | 210mm |
| TPF-J/220 | 220mm |
| TPF-J/230 | 230mm |
| TPF-J/240 | 240mm |

END CAPS

| Pre-coated White Alum | Dim A |
|-----------------------|-------|
| EC-R771/100 | 100mm |
| EC-R771/110 | 110mm |
| EC-R771/120 | 120mm |
| EC-R771/130 | 130mm |
| EC-R771/140 | 140mm |
| EC-R771/150 | 150mm |
| EC-R771/160 | 160mm |
| EC-R771/170 | 170mm |
| EC-R771/180 | 180mm |
| EC-R771/190 | 190mm |
| EC-R771/200 | 200mm |
| EC-R771/210 | 210mm |
| EC-R771/220 | 220mm |
| EC-R771/230 | 230mm |
| EC-R771/240 | 240mm |



Thermo-Pro[®] Rainwater Box

The new Thermo-Pro Rainwater Box utilises the existing guttering and drainage system.

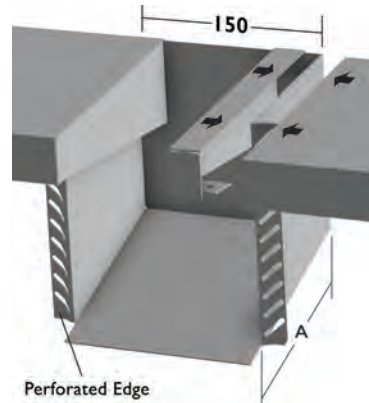
By adding a swan neck junction, the downpipe can be moved to the front of the insulation system.

This product can be used with the Thermo-Pro Fascia (TPF) and verge trims.

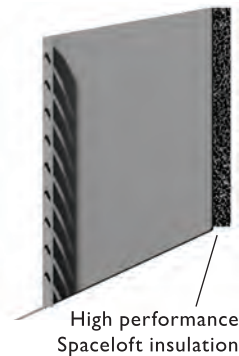
The back of the box is insulated with a 10mm high performance Spaceloft insulation backing pad. This prevents cold spots and improves the thermal efficiency of the insulation system.

This product is also available without the 10mm aerogel backing pad. A drainage box is also available.

Made from 1.2mm powder-coated aluminium.



Rain water drain boxes also available



High performance Spaceloft insulation

European Patent No.: 2703574

INSULATED DOWN PIPE BOX

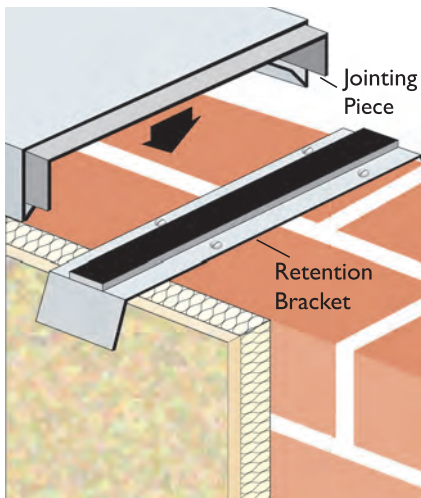
| CODE | Dim A | CODE | Dim A |
|---------|-------|---------|-------|
| TPR/50 | 50mm | TPR/130 | 130mm |
| TPR/60 | 60mm | TPR/140 | 140mm |
| TPR/70 | 70mm | TPR/150 | 150mm |
| TPR/80 | 80mm | TPR/160 | 160mm |
| TPR/90 | 90mm | TPR/170 | 170mm |
| TPR/100 | 100mm | TPR/180 | 180mm |
| TPR/110 | 110mm | TPR/190 | 190mm |
| TPR/120 | 120mm | TPR/200 | 200mm |

UN-INSULATED DOWN PIPE BOX

| CODE | Dim A | CODE | Dim A |
|--------|-------|--------|-------|
| DP/50 | 50mm | DP/130 | 130mm |
| DP/60 | 60mm | DP/140 | 140mm |
| DP/70 | 70mm | DP/150 | 150mm |
| DP/80 | 80mm | DP/160 | 160mm |
| DP/90 | 90mm | DP/170 | 170mm |
| DP/100 | 100mm | DP/180 | 180mm |
| DP/110 | 110mm | DP/190 | 190mm |
| DP/120 | 120mm | DP/200 | 200mm |

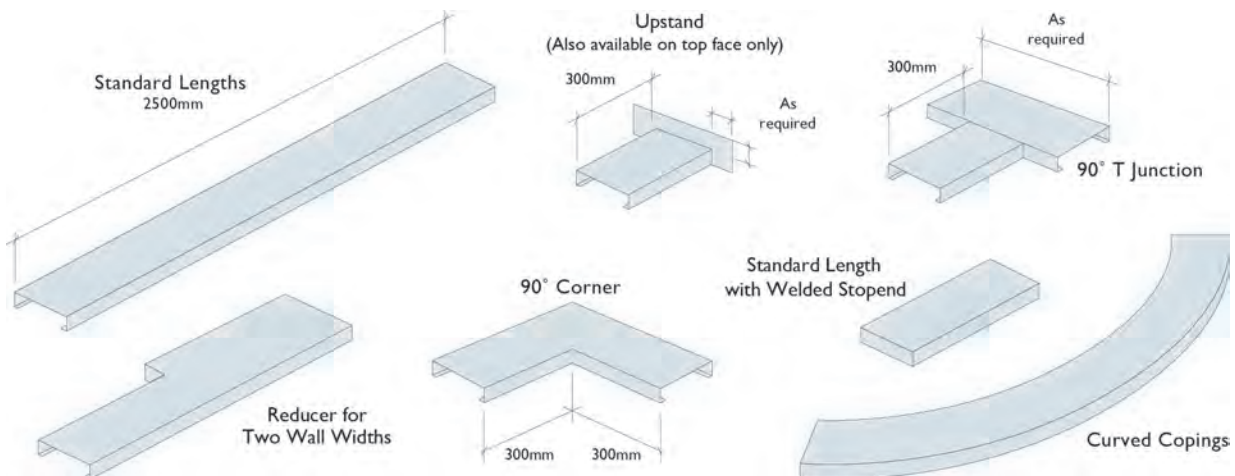


Aluminium Copings



Made to measure aluminium copings.
 Economical, weatherproof and easy to install.
 Maintenance free.
 No visible fixings.
 Can be supplied mill finish or polyester powder coated to qualicoat standards in a wide range of RAL colours.
 Flat/Once weathered/ Twice weathered.
 Corners can be manufactured to any angle.

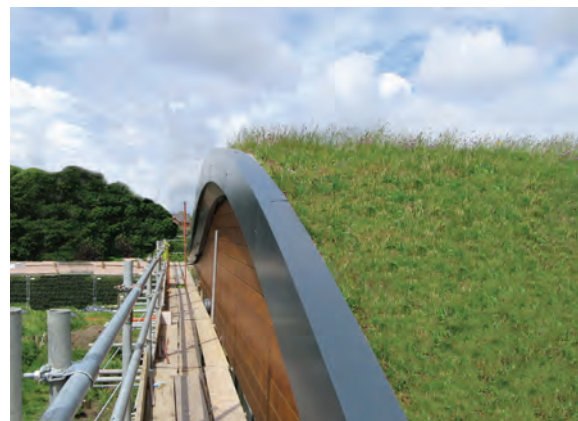
T Sections/Stop Ends/Upstands/Joining pieces all made to your requirements.
 Curved/Radius copings available.
 Wind-tested to withstand extreme weather conditions and exposed applications.
 To see Wemico copings being installed visit www.wemico-fabrication.co.uk/gallery.html
 Site measuring service and technical support available.





Aluminium Fascias / Soffits & Façade Panels

Made to measure Aluminium Fascias / Soffits / Cladding.
 Curved or straight sections.
 Pre-formed corners.
 Powder coated to Qualicoat and BS specifications.
 Suitable for a wide range of domestic and commercial applications.
 Easy to install.





Bespoke Sills, Flashings and Window Pods

In addition to our standard range of sills and flashings, Wemico offer a full range of bespoke, manufactured to order flashings, sills and window pods; suitable for a wide range of applications. Made to any size. Pre-formed corners and welded stop ends available.

Loose or internal welded joints available. Push fit or fully welded end caps available. Polyester powder coated to Qualicoat standards in any standard RAL colour. Supplied with protective film.





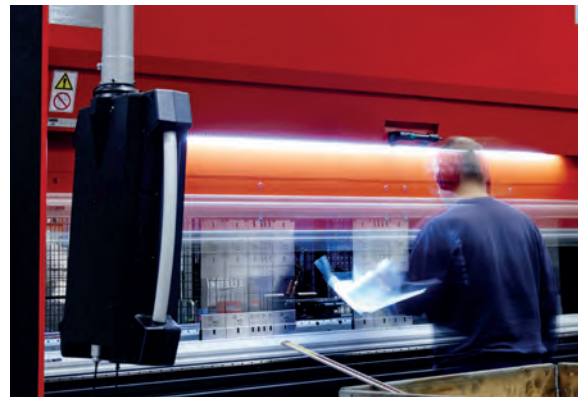
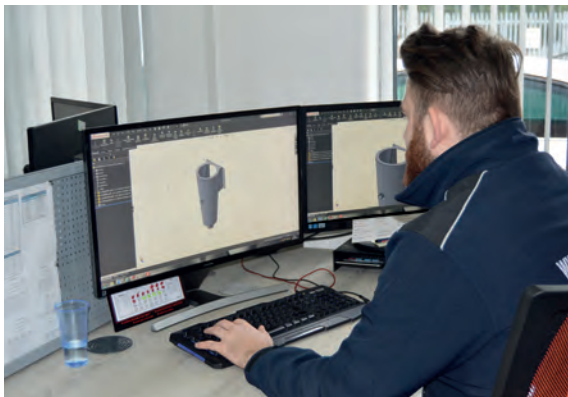
Our facilities

Wemico is a market leader in the manufacture and supply of beads, profiles and bespoke fabrication for the construction industry specialising in trims for external wall insulation, render, roofing and cladding systems.

Established in 1980 and part of the Protektor group, Wemico offers the highest standards of knowledge and service combined with the most comprehensive range of products and is unrivalled in its field.

Wemico hold extensive stock levels enabling an excellent level of service, whilst also maintaining uncompromising quality. Our specialist fabrication facility is available for unique specifications requiring made-to-measure details.

A professional sales and technical team are on hand to offer advice.



WEMICO

T: 01562 820123

WEMICO

WESTERN EXPANDED METAL
INDUSTRIES COMPANY LIMITED

Matthew Lane, Hoo Farm Industrial Estate
Kidderminster, Worcs. DY11 7RA

T: 01562 820123 F: 01562 822012
E: sales@wemico.co.uk



EXTERNAL WALL INSULATION PROFILES | FACADE PROFILES
RENDER BEADS | ARCHITECTURAL FABRICATION

www.wemico.com



PROFILES
FOR MODERN
BUILDING