

Double-locking security
as standard



BUILDING CHECKLIST

	XPandachem™	Standard Store
Flat-packed	✓	X
Man-portable	✓	X
Flexible	✓	X
Simple Assembly	✓	X
Modular	✓	X
Galvanized	✓	X

XPANDACHEM



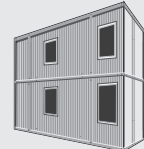
FLAT-PACKED, MAN-PORTABLE, MODULAR BUILDINGS

XPANDACABIN



office or workshop

XPANDACOM



manportable 20ft office

XPANDASTORE



storage building

Ideal for siting in locations with limited access. Light enough to be man handled and with components that are small enough to fit through small passageways.

CONTACT INFO:



www.pandabuildings.com

01795 810 249

info@pandabuildings.com

brochure design by OB Studio



FLAT-PACKED, MAN-PORTABLE, MODULAR BUILDINGS



**XPANDA
CHEM**

the sumped materials store

...flexible and extendable!



the XPandaChem™ can be lifted and moved by crane or forklift, with a load onboard



smart external appearance



sumped base for contained spillage with suspended floor grate

XPANDACHEM

The flat-pack, man-portable and modular storage building, designed for the storage and containment of liquids

All components are totally man-portable and can be carried into locations with restricted access for the simple assembly

The only tools required are a socket set and screw driver

The strong profiled steel building is manufactured in galvanized steel for long life and features double locks on the doors for added security

Units can be linked together to form larger areas of storage space, side to side or end to end

If not in use the XPandaChem™ can be returned to its flat-packed form for transportation or easy stackable storage

All parts of an XPandaChem™ can be replaced

Protective powder coated finish on the doors and sumped base:



Red
RAL3000



the XPandaChem™ has double doors for easy access



arrives flat-packed



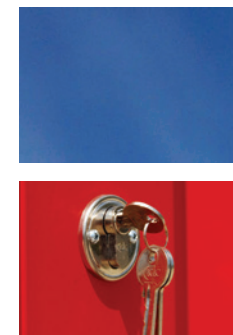
man-portable



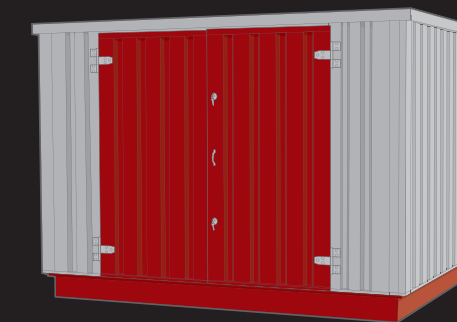
simple to assemble



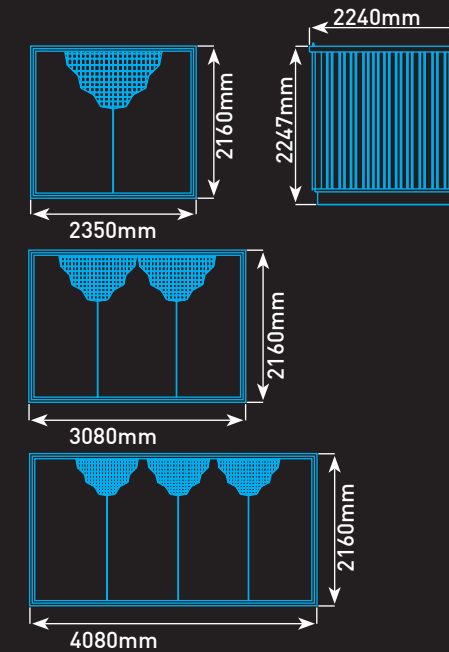
ready for use



Basic sizes (all expandable)



Length: 2.3m or 3m or 4m
Width: 2.1m
Height: 2.2m



Technical specification

DIMENSIONS

2160mm (L) x 2305 (W). Weight: 520kg
Sump capacity: 680 litres
2160mm (L) x 3080 (W). Weight: 633kg
Sump capacity: 904 litres
2160mm (L) x 4080 (W). Weight: 781kg
Sump capacity: 1212 litres
External height: 2247mm
Door width: 1900mm.

CONSTRUCTION COMPONENTS

The main construction elements of the store are as follows:

1. Sump
2. Floor grate – loading = 250 kg m2 (upgradable to 1000 kg m2)
3. Side wall panels
4. Roof panel
5. Double-door panels featuring the newly improved double locking system
6. Fastening elements
7. Numerous optional extras

SIDE WALLS & ROOF PANEL

0,73 mm box profile galvanized steel panels. The panels are strengthened with spot welded galvanized steel frame sections at the edges of each panel. The roof section has two integral gutters for effective rainwater dispersal to all four corners of the container.

FASTENING COMPONENTS

Four 12 mm diameter rods are used to connect the lifting eyes to the chassis. The wall panels are fixed to the chassis with 13mm bolts into captive nuts. Additional roof security bolts are supplied to prevent external access.

FLOOR

Sumped chassis base, with suspended floor grate.

DOOR PANELS

0,73 mm box profile galvanized steel panel, with powder coated finish. The door panels are spot welded, and mounted into the frame with galvanized hinges. Complete with two 64mm Euro deadlocks with replaceable cylinders and a central roller catch. Double door width: 1900mm, hinged on the right and left, outward opening.

PACKING

All components of the XPandaChem™ are specially packed to ensure that they are not damaged during transportation, loading and unloading under normal circumstances. The smallest transportation cube is achieved in this packing process.

POWDER COATING

The doors and sump chassis are powder coated in RAL3000 (Red).

EXPANDABLE

Units can be enlarged by the addition of further units. A special linking kit is available to extend side to side or end to end.

FIRE RATING

XPandaChem is not fire rated and should not be sited within another building. If you are in any doubt as to what you are able to store, consult your HSE officer.

XPandaChem™ accessories

EASY-FIT SHELVING



TOOL BINS



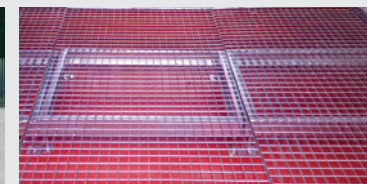
DOOR CLOSER



LINKING KIT



1 TONNE UPGRADE KIT



WALL HOOK

