



***Choose only the best between you and the sun***



- ✓ Award-Winning Awnings
- ✓ Huge Selection of Fabric Designs
- ✓ Automation, Accessories & Addons
- ✓ Pergolas & Modular Shading Systems

Book Your Free Survey  
**0800 716 569**

Proud members of  
**Checkatrade.com**  
Where reputation matters



**Retractable Awnings** | Explore our range of open, semi and fully cassetted patio and balcony awnings  
Find the right awning that suits your taste, needs and budget on **pages 4-11**



**Free Standing Awnings**  
No need for wall fixtures - **pages 12-13**

**Pergolas** | Exceptional weather protection for large areas  
Create a generous shade for areas up to 30m<sup>2</sup> with a single unit - **p.14**

**Markilux Markant** | Modular shading systems  
A perfect freestanding shading to complement your open space - **p.15**

**Fabrics & Options**  
Make your awning truly unique - **pages 16-19**



Talk to the Experts  
0800 716 569

**ACCESS**  
AWNINGS

ESTABLISHED  
SINCE  
1976

### Head Office

No Showroom  
at the Head Office

1

Genesis House  
Priestley Way  
Crawley  
West Sussex RH10 9PR  
T: **01293 652 472**  
E: [Crawley@accessawnings.com](mailto:Crawley@accessawnings.com)

### Croydon Showroom

2

416 Brighton Road  
South Croydon  
Surrey CR2 6AN  
T: **020 8681 7989**  
E: [Croydon@accessawnings.com](mailto:Croydon@accessawnings.com)

### New Malden Showroom

3

320 West Barnes Lane  
Motspur Park  
New Malden  
Surrey KT3 6NB  
T: **020 8942 3186**  
E: [NewMalden@accessawnings.com](mailto:NewMalden@accessawnings.com)

### Sidcup Showroom

4

9 Elm Parade  
Main Road  
Sidcup  
Kent DA14 6NF  
T: **020 8302 6627**  
E: [Sidcup@accessawnings.com](mailto:Sidcup@accessawnings.com)

### Watford Showroom

5

Unit 26, Orbital 25 Business Park  
Dwight Road  
Watford  
Hertfordshire WD18 9DA  
T: **01923 815 450**  
E: [Watford@accessawnings.com](mailto:Watford@accessawnings.com)

### Upminster Showroom

6

Unit 1, Upminster Trading Park  
Warley Street  
Upminster  
Essex RM14 3PJ  
T: **01708 227 042**  
E: [Upminster@accessawnings.com](mailto:Upminster@accessawnings.com)

Choose only the best between you and the sun

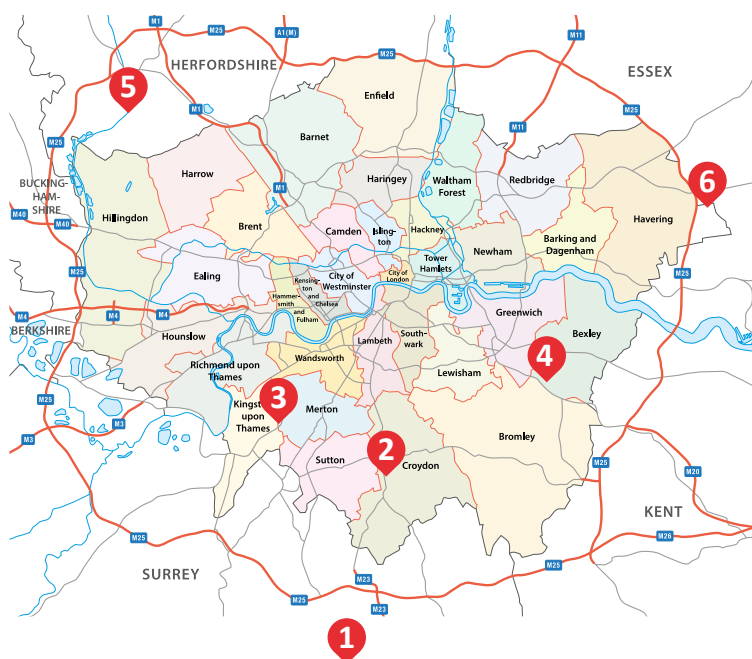
We are the South East's specialists in residential and commercial awning solutions. Providing professional installations of shading systems and retractable awnings from award winning German manufacturer, Markilux.

markilux



Our extensive range of top quality awnings, beautiful fabric designs and options for customisation provide new open space for you to enjoy in most seasons as well as add value to your property. Let us inspire you to get the most out of your home and garden. Explore our range of retractable and freestanding awnings, modular shading systems and pergolas or find out how would you benefit from having an awning at your property.

If you want more information or to see our range of products, then head over to a showroom near you or visit [www.accessawnings.com](http://www.accessawnings.com)



### Showroom Opening Hours

**Monday:** 7.30am – 5.00pm  
**Tuesday:** 7.30am – 5.00pm  
**Wednesday:** 7.30am – 5.00pm  
**Thursday:** 7.30am – 5.00pm  
**Friday:** 7.30am – 4.00pm  
**Saturday:** 9.00am – 12.30pm  
**Sunday:** Closed

[www.accessawnings.com/showrooms](http://www.accessawnings.com/showrooms)

#### ✓ Free Surveys & Estimates

We'll help you find the best solution at the comfort of your home

#### ✓ Great Range of Award-Winning Awnings

Find the solution that suits your style, needs and budget

#### ✓ Over 45 Years in Business

Take advantage of our vast experience gained since 1976

#### ✓ Branches & Showrooms across the South East

Visit us, meet the experts and see the products live in action

# Markilux 6000

Markilux 6000 Awning in Metallic Aluminium, Polished Chrome Trims and Stainless Steel Mesh End Caps with Sunvas Fabric

A designer cassette awning that is individually modifiable in both colour and specification. The enormous variety of combinations of the visual and technical aspects makes this awning truly unique.

With a wide variety of frame colours, decorative elements and accessories available, the Markilux 6000 awning allows for creation of a unique and very personal model that leaves a lasting impression. In addition to hundreds of colours and patterns of the fabric and a range of frame colours, you can also choose stainless steel mesh end caps or polished chrome trims.

Bionic tendon arm technology as a standard. Great options such as LED spotlights in the front profile or the shade plus drop valance are available to make the awning even more personable. The Markilux 6000 can span 7 metres wide and project up to 4 metres. Greater widths can be achieved by coupling few of these awnings together to cover large patios or outdoor restaurant seating areas.

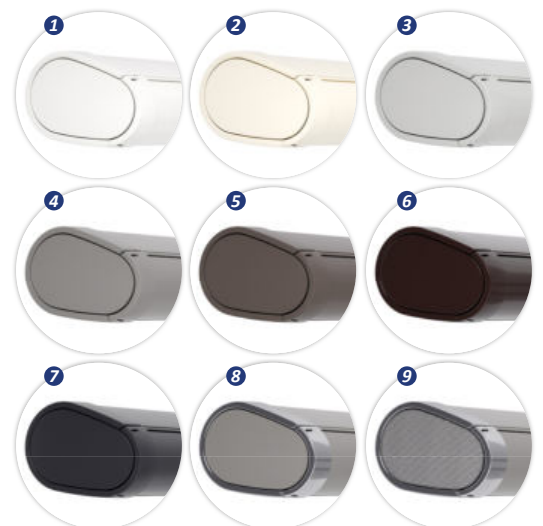


Markilux 6000 Awning - Anthracite Metallic Frame Finish with Polished Chrome Trim & Stainless Steel Mesh End Cap Inserts

## Characteristics & Specifications

- ✂ Up to **7m\* wide x 4m projection** (can be coupled)  
*\*Markilux 6000 Awnings can be coupled to cover larger areas*
- 🏠 **Design - Full Cassette**  
*Semicircular front profile with integrated gutter*
- ✂ **Fixtures - Face, Top or Eaves**  
*Custom brackets available for difficult installation situations (p.19)*
- ⚙ **Operation - Manual or Automatic**  
*Manual, Servo Manual, Hard-Wired or Radio-Controlled or Silentec Motor*
- 🦋 **Folding Arms - Bionic Tendon**  
*Power transference via the innovative bionic tendon at the elbow joint*
- ✓ **Adjustable Pitch 5° - 35° or 36° - 70°**
- ✓ **Wind Resistance Class 2 - Beaufort 5 (17-23mph)**

## Standard Frame Colours & Options



1. Traffic White | 2. Off-White Textured | 3. Metallic Aluminium  
4. Stone Grey Metallic | 5. Havana Brown | 6. Grey Brown  
7. Anthracite Metallic | 8. Optional Trim in Polished Chrome  
9. Optional Stainless Steel Mesh End Cap with Polished Chrome trim



Markilux 6000 Awning with Drop Valance, feat. 'Leaves Grey' printed Cover Fabric from the New Smart Art Collection



Markilux 6000 Awning with LED Spotlights in Front Profile

## Features, Options & Extras



### Integrated Gutter

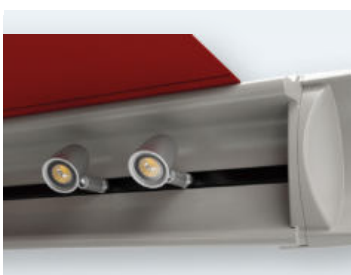
Concealed gutter with water drainage holes to the side.

\*Optional Features



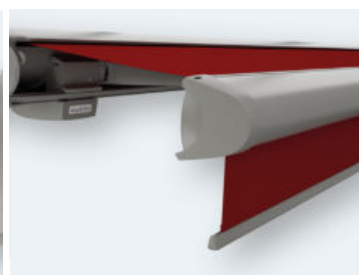
### Wall Sealing profile\*

Slim aluminium profile closes the gap between the awning and the wall, allowing rain to be discreetly drained off the front of the awning.



### LED Spotlights in Front Profile\*

Option of adjustable LED spotlights in the front profile, creating a pleasant atmosphere.



### Shadeplus / Drop Valance\*

Vertical protection against low-lying sun, wind and inquisitive glances integrated into the front profile.

**Explore the Range of Cover Fabrics**  
on pages 16 - 17



Markilux 6000 Awning with 'Chain Grey' printed Cover Fabric from the New Smart Art Collection



Markilux 6000 Awning featuring Polished Chrome Trim, Stainless Steel Mesh Cap Inserts and Pattern 32802 Sunsilk Cover Fabric



# Markilux MX-3

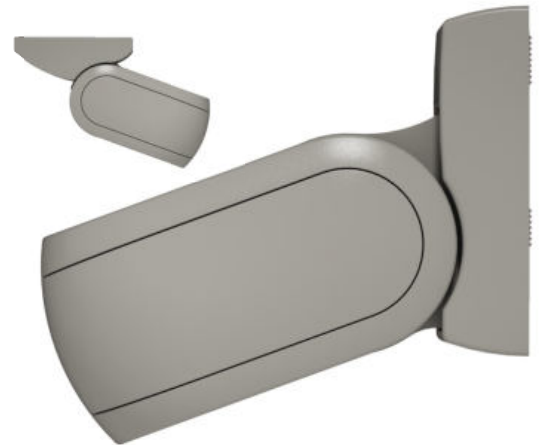
Markilux MX-3 Awning in Stone Grey Metallic with Yellow Green Styling Panel featuring LED Line in the Cassette and Pattern 31406 Sunvas Cover Fabric

*The sturdy cassette awning with a slender figure and contrasting visual features from round to square.*

Shapely curves, clean lines and an enchanting colour spectrum – these are the main features of the new Markilux MX-3.









The colour choice of the all-round styling panel offers a unique customisation option and excites both patio and balcony owners. When closed, the awning enhances the appeal of the property with its smooth curves, and when opened it fully reveals its dominance.

The innovative designer awning Markilux MX-3 makes an outstanding impression with its very attractive price to performance ratio. This awning also allows you to enjoy the outdoors even after the sun has gone down with the optional LED Line within the cassette, ideal for those warmer evenings.



Markilux MX-3 Awning Profile  
Top Fixture (top left), Face Fixture (main image)

## Characteristics & Specifications

-  **Up to 6m wide x 3m\* projection**  
*\*or maximum width 500cm at the largest projection of 350cm*
-  **Design - Full Cassette**  
*Front profile with integrated gutter*
-  **Fixtures - Face, Top or Eaves**  
*Custom brackets available for difficult installation situations (p.19)*
-  **Operation - Manual or Automatic**  
*Manual, Servo Manual, Hard-Wired or Radio-Controlled Motor*
-  **Folding Arms - Bionic Tendon**  
*Power transference via the innovative bionic tendon at the elbow joint*
-  **Variable Pitch 5° - 35° (face fixture) or 5° - 70° (top fixture)**
-  **Wind Resistance Class 2 - Beaufort 5 (17-23mph)**
-  **Various Screen Profile and Awning Colours can be combined**

## Standard Frame Colours & Options



1. Traffic White | 2. Off-White Textured | 3. Metallic Aluminium  
4. Stone Grey Metallic | 5. Havana Brown Textured | 6. Anthracite Metallic  
7-9. Examples of Combination Possibilities (All standard styling panel colours can be combined at will with the standard frame colours)

Bespoke frame colours - matt, metallic, finely textured and pearl finishes and other colour ranges available on request (with surcharge).



Markilux MX-3 Awning in Traffic Red from the Special Architecture Edition 2019, featuring LED Line in the Cassette

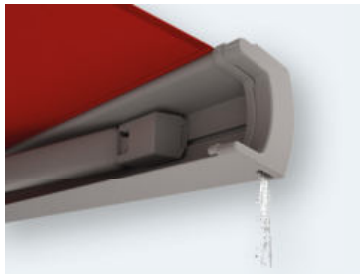


Various Colour Combinations of Markilux MX-3 Awnings



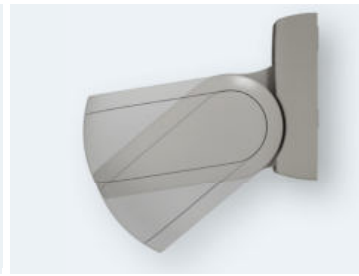
Retracted MX-3 Awning in Stone Grey Metallic with Yellow Green Styling Panels, feat. Wall Sealing Profile

## Features - Options - Extras



### Integrated Gutter

Harmoniously rounded front profile with integrated water drainage system.



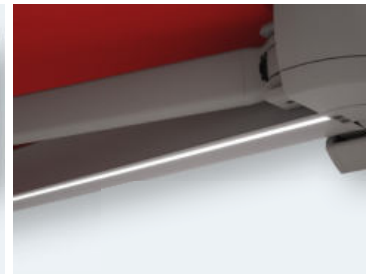
### Variable Pitch

Infinitely variable pitch range 5° - 35° with face fixture or 5° - 70° with top or eaves fixture.



### Wall Sealing profile\*

Slim aluminium profile closes the gap between the awning and the wall, allowing rain to be discreetly drained off the front of the awning.



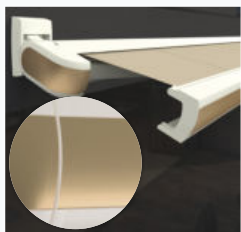
### LED Line in the Cassette\*

LED Line fitted to the underside of the cassette provides an appealing atmosphere in the evening.

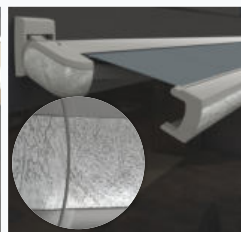
\*Optional features

## Special Editions

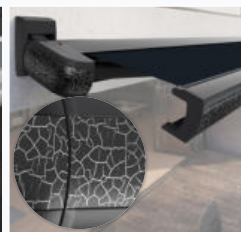
A small selection of colour-coordinated combinations using innovative surface coating from the **Selection MX Edition**. (also available for MX-1 Compact model)



Pebble Beige Metallic Matt  
5233 | SMX-08 | 314 87\*



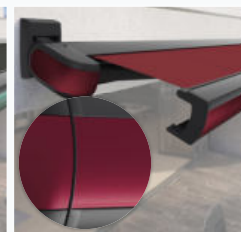
Silver Grey Effect Paint  
5215 | SMX-06 | 310 18\*



Matt Black/Silver Effect Paint  
5204 | SMX-04 | 310 28\*



Copper Green Patinated  
5204 | SMX-01 | 310 58\*



Ruby Red Metallic Matt  
5204 | SMX-09 | 325 13\*



The **Special Architecture Edition 2019** offers a selection of personalised colour-coordinated combinations. (available without surcharges)



Pearl White  
RAL1013 | 5233 | 309 37\*



Agate Grey  
RAL7038 | 5215 | 315 92\*



Pearl Mouse Grey  
RAL7048 | 5229 | 314 87\*



Yellow Green  
RAL6018 | 5204 | 325 06\*



Traffic Red  
RAL3020 | 5204 | 310 03\*



Red Orange  
RAL2001 | 5229 | 309 12\*

\*Styling Panel Colour | Awning Colour | Cover Pattern



# Markilux 990

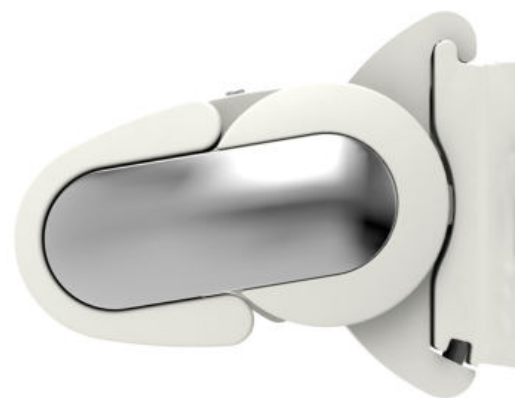
Markilux 990 Awning in Anthracite Metallic with Chrome End Cap Inserts, 30926 Sunvas Fabric Cover, featuring LED Spotline fitted below the Awning

*The most compact Markilux awning with folding arms – svelte, attractive and functional.*

The Markilux 990 is a fully cassetted awning that can spread 5 metres wide with 3 metres projection. Only a 125mm high cassette is packed with sophisticated technologies. Compact construction and an impressive angle of pitch of 70 degrees makes this awning a top choice for balconies or smaller patios.









Comes with twin round steel link chain folding arms and a U shaped front profile which beautifully integrates with the cassette when retracted. The arms can be upgraded to bionic tendon technology instead of the chain link if required.

As an option, the end cap inserts can be supplied in polished chrome and a valance can be added. We have a huge range of canvas colours and patterns to choose from. The Markilux 990 comes with manual operation as standard but this can be upgraded to servo-assisted manual, hard wired or radio-controlled motor.



Markilux 990 Awning Profile - Off-White Textured Finish with End Cap Inserts in Polished Chrome

## Characteristics & Specifications

-  **Up to 5m wide x 3m projection**  
*Minimum width 179cm at the smallest projection of 150cm*
-  **Design - Full Cassette**  
*Semi-circular front profile with integrated gutter*
-  **Fixtures - Face, Top or Eaves**  
*Custom brackets available for difficult installation situations (p.19)*
-  **Operation - Manual or Automatic**  
*Manual, Servo Manual, Hard-Wired or Radio-Controlled Motor*
-  **Folding Arms - Twin Steel Link Chains**  
*Optional: Bionic Tendon*
-  **Variable Pitch 5° - 35° (face fixture) or 5° - 70° (top/eaves fixture)**
-  **Wind Resistance Class 2 - Beaufort 5 (17-23mph)**
-  **Self-Supporting Cassette Profile Construction**

## Other Standard Frame Colours



1. Traffic White | 2. Off-White Textured | 3. Metallic Aluminium  
4. Stone Grey Metallic | 5. Havana Brown Textured | 6. Grey Brown  
7. Anthracite Metallic | 8\*. Anthracite Metallic + Chrome End Caps  
9\*. Stone Grey Metallic + Chrome End Caps (\*Optional)



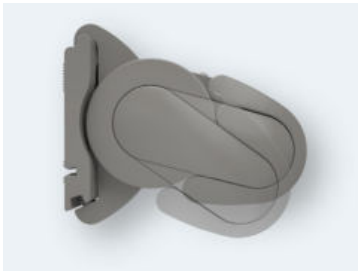


Installation of five Markilux 990 Awnings in White with Pattern 32860 Sunsilks Cover Fabric



Markilux 990 Awning in White with Polished Chrome End Cap Inserts and 30958 Sunvas Cover Fabric

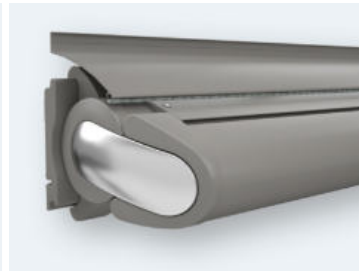
## Features, Options & Extras



### Adjustable Pitch

Adjustable pitch range 5° - 35° with face fixture or 5° - 70° with top or eaves fixture.

\*Optional features



### Wall Sealing profile\*

Slim aluminium profile closes the gap between the awning and the wall, allowing rain to be discreetly drained off the front of the awning.



### Twin Steel Link Chains Arm

Power transference via corrosion-protected twin steel-link chains at the elbow joint.

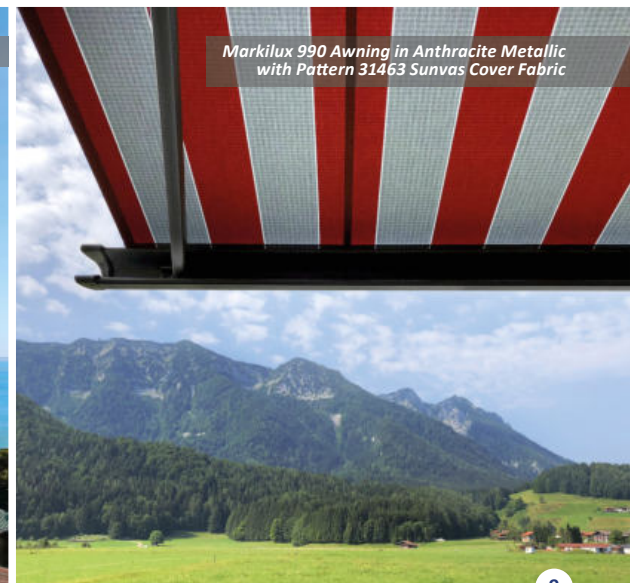


### Bionic Tendon Arm\*

Made of high tensile, high-tech fibre insensitive to corrosion, providing low friction and noiseless operation.



Markilux 990 Awning in White



Markilux 990 Awning in Anthracite Metallic with Pattern 31463 Sunvas Cover Fabric



# Markilux 1600

Markilux 1600 Awning in Anthracite Metallic with 30926 Sunvas Cover Fabric, featuring Polished Chrome End Caps and LED Line in the Folding Arms



Markilux 1600 Awning in Anthracite Metallic with 32516 SunsilK Cover Fabric, fixed to Markilux Syncra Awning Stand



Markilux 1600 Awning featuring Shadeplus/Drop Valance

## Excellent design features & well-thought-out mechanics.

The unique, Markilux 1600 awning with its harmonious, semi-circular design is a winner of the IF product design award. Open at the bottom but when retracted, it closes flush with the front profile and protects the cover from the rain.









The max span of the Markilux 1600 is 7.1 metres and it can project up to 4 metres. As this awning can be coupled, it can effectively stretch to over 14 metres in width which is perfect even for a commercial application.

The Markilux 1600 awning comes with manual operation as standard and can be upgraded to servo-assisted manual operation, hard-wired or remote controlled motor. Other options such as LED Lines in the arms, end caps in polished chrome or drop valance are available.

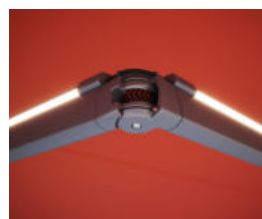


Markilux 1600 Awning Profile in Anthracite Metallic with Polished Chrome End Caps

## Characteristics & Specifications

-  **Up to 7.1m\* wide x 4m projection** (can be coupled)  
*\*Markilux 1600 Awnings can be coupled to cover larger areas*
-  **Design - Semi-Cassette**  
*When retracted, the roller tube is enclosed completely (open underneath)*
-  **Fixtures - Face, Top or Eaves**  
*Custom brackets available for difficult installation situations (p.19)*
-  **Operation - Manual or Automatic**  
*Manual, Servo Manual, Hard-Wired or Radio-Controlled Motor*
-  **Folding Arms - Twin Steel Link Chains**  
*Optional: Bionic Tendon*
-  **Variable Pitch 5°- 35°** (face fixture) or **5°- 70°** (top/eaves fixture)
-  **Wind Resistance Class 2 - Beaufort 5** (17-23mph)
-  **Optional Wall Sealing Profile**  
*Slim aluminium profile closes the gap between the wall and the awning allowing rain to be discreetly drained off the front of the awning.*

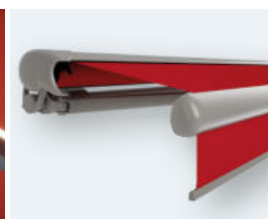
## Features - Options - Extras



### LED Line in Arms\*

LED Lines in the folding arms guarantee evenings full of atmosphere.

*\*Optional features*



### Shadeplus / Valance\*

Vertical blind in the front profile blocks low-laying sun and prying eyes. Up to 3.5m of vertical protection.

## Standard Frame Colours & Options



1. Traffic White | 2. Off-White Textured | 3. Metallic Aluminium  
4. Stone Grey Metallic | 5. Havana Brown Textured | 6. Grey Brown  
7. Anthracite Metallic | 8-10. Optional Chrome End Caps



# Markilux 5010

Markilux 5010 Awning in Metallic Aluminium and Pattern 32802 Sunsilk Cover Fabric



Markilux 5010 Awning used in a Commercial Setting incl. Markilux Format - Wind & Privacy Protection Screens



Markilux 5010 Awning featuring Drop Valance

The sturdy cassette awning with a slender figure and contrasting visual features from round to square.








The Markilux 5010 awning is an all-rounder that encourages relaxed family get-togethers. This awning provides generous shade with its 7 metres span and 4 metres projection. Up to three of the 5010s can be coupled to extend the width of the shade to an amazing 21 metres.

Provided with manual operation as standard, this awning can be upgraded to servo-assisted manual operation or one of the motors including radio controlled motor that enables the owner to control the awning by an app.



Markilux 5010 Awning Profile in Anthracite Metallic

## Characteristics & Specifications

-  **Up to 7m\* wide x 4m projection (can be coupled)**  
\*Markilux 5010 Awnings can be coupled (up to 3x Markilux 5010s)
-  **Design - Full Cassette**  
Semicircular front profile with integrated gutter
-  **Fixtures - Face, Top or Eaves**  
Custom brackets available for difficult installation situations (p.19)
-  **Operation - Manual or Automatic**  
Manual, Servo Manual, Hard-Wired or Radio-Controlled or Silentec Motor
-  **Folding Arms - Twin Steel-Link Chain**  
Optional: Bionic Tendon
-  **Adjustable Pitch 5° - 35° or 36° - 70°**
-  **Wind Resistance Class 2 - Beaufort 5 (17-23mph)**

## Features - Options - Extras



### Wall Sealing Profile\*

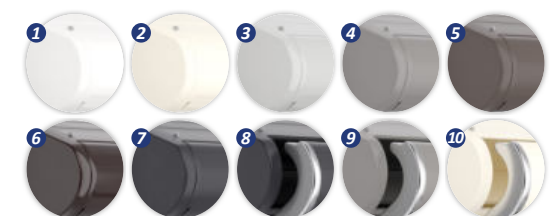
Slim aluminium profile closes the gap between the awning and the wall.

### Shadeplus\*

Vertical blind in the front profile blocks low-laying sun and prying eyes. Up to 3m.

\*Optional features

## Standard Frame Colours & Options



1. Traffic White | 2. Off-White Textured | 3. Metallic Aluminium | 4. Stone Grey Metallic | 5. Havana Brown Textured | 6. Grey Brown | 7. Anthracite Metallic | 8-10. Optional Chrome End Caps



# Markilux Planet

Markilux Planet Flex combined with the Markilux 6000 Awning



Markilux Planet Fix combined with the MX6000 Awning



Markilux Planet Flex combined with the Markilux 5010 Awning

*Freestanding folding-arm awning stand that protects from solar radiation with exceptional reliability. A parasol and awning in one.*

Powder-coated, freestanding, aluminium awning stand system with a round support post and a square cross-beam allowing the fixture of one Markilux folding-arm awning.

It's an eye catcher that provides perfect shading for your outdoor space. This awning-cum-parasol protects from solar radiation with exceptional reliability; it is extremely sturdy, yet flexible in its deployment. With the Easy-Go lever in the flex variant, you can simply rotate it by up to 335° degrees - so you can have shade wherever it is required.



### Shadeplus\*

Vertical blind in the front awning profile to block low-laying sun. Up to 350cm.

### Planet Flex Lever

Easy-Go turn/lever mechanism helps rotating the Planet Flex up to 335°

### Base Plate Cover

Attractive footplate covers, made of powder coated die-cast aluminium.

\*Depending on the awning model used



Markilux Planet Flex Awning Stand in Stone Grey combined with Markilux 6000 Retractable Awning

## Characteristics & Specifications

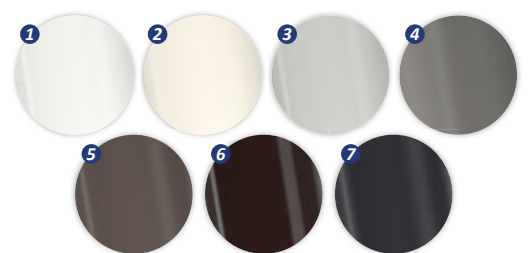
✂ Up to 6/6.1m wide x 4m projection\* (or 5/5.1m x 3.5m)\*  
**Height 2.95m** approx. as standard  
 \*Actual width depends on the awning model and size used

📦 **Possible Awning Combinations**  
 6000, 5010, 990, MX-3, 1600, 1600 Stretch, 1700, 1700 Stretch, 1710, 1710 Stretch

✂ **Fixture - Freestanding on Concrete Foundation**

✓ **Available as Planet Fix (fixed in place) or Planet Flex (can be rotated)**  
 ✓ **Cable passed through ducts in the post and cross-beam (Optional)**

## Standard Frame Colours & Options



1. Traffic White | 2. Off-White Textured | 3. Metallic Aluminium  
 4. Stone Grey Metallic | 5. Havana Brown Textured  
 6. Grey Brown | 7. Anthracite Metallic

**Please note that shading systems may be subject to compulsory planning permission regulations depending on the region.**



# Markilux Syncra

Markilux Syncra Flex Awning Stand with 2x Markilux 6000 Awnings



Markilux Syncra Flex featuring IR Heaters & LED Spotline



Markilux Syncra Uno\* Fix Awning Stand with one Awning  
(\*Two feet, one awning)

## A freestanding double awning stand with generous shading.

The Markilux Syncra freestanding awning can cover the largest of areas with the frame system producing widths of up to 7 metres. As a single unit it will provide shade for up to 60m<sup>2</sup>\*. Depending on the requirements, one or two folding-arm awnings or Markilux pergolas can be attached.

This awning stand can be anchored to the ground (Syncra Fix) or equipped with stabilisation boxes (Syncra Flex), perfect for when shading lawn areas without risking any damage to the turf itself. Excellent for both domestic & commercial uses and in hard to shade areas.



### Maintenance Ducts

Posts with integrated cable ducts and maintenance cover.



### Ballast Boxes (Syncra Flex)

The Ballast Boxes allow installation without concrete foundations on site.



### Syncra Uno

Two feet, one awning. The Markilux Syncra Uno provides stable base even with just one 'wing'.

\*Depending on the awning model used

## Characteristics & Specifications

- ✂ Up to 7m wide\* (up to 60m<sup>2</sup>\*)  
Height 3.2m as standard (max 4.5m on request)  
\*Depending on the awning model used | A coupled system available up to 3 fields
- 📦 Possible Combinations (with Markilux Awnings & Pergolas)  
6000, 5010, 970, 990, 1600, 1600 Stretch, 1710, 1710 Stretch, MX-1 Compact, Pergola
- ✂ Fixture - Freestanding on Concrete Foundations (Syncra Fix) or Ballast Boxes (Syncra Flex)
- ✓ Support posts optionally round or square
- ✓ Aluminium frame system including top cover profile



Markilux Syncra with two Awnings

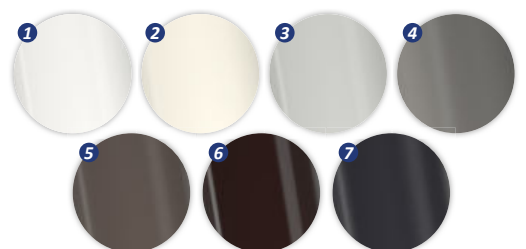


Markilux Syncra with two Awnings, one Foot and fixed to the Wall



Markilux Syncra supporting two Markilux Pergolas

## Standard Frame Colours & Options



1. Traffic White | 2. Off-White Textured | 3. Metallic Aluminium
4. Stone Grey Metallic | 5. Havana Brown Textured
6. Grey Brown | 7. Anthracite Metallic



# Markilux Pergola

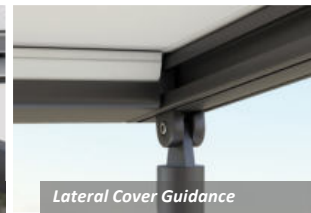
Markilux Pergola Classic with Shadeplus



Freestanding Markilux Pergola Classic supported by Markilux Syncra Awning Stand



Closed Full Cassette System

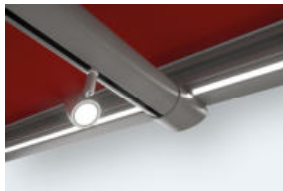


Lateral Cover Guidance

## Exceptional sun and weather protection for large areas.

The Markilux Pergolas rank top when it comes to solar and wet weather protection. You have every opportunity to make your favourite outdoor place your very own with a Markilux Shadeplus as well as with a multitude of lighting and heating options, and different post shapes.

Regardless of whatever style you prefer - in the personal combination of awning cover and technology, you are bound to find precisely the Markilux Pergola that fulfills your requirements perfectly.



### LED Line & Spotlights\*

LED Line in guide tracks or cover support tube + dimmable LED Spotlights.



### Sundrive + Shadeplus\*

Additional vertical blind with integrated motor powered by a solar module.



### Telescopic Post\*

For a better water drainage, the front post can be lowered by 20-40cm

\*Optional features (depending on Pergola model used)



## Pergola Stretch

Markilux Pergola Stretch feat. LED lines and IR Heaters



Retracted Cover



Integrated Gutter

## Characteristics & Specifications

- ✘ Pergola Classic - 6m wide x 4.5m or 5m x 6m (up to 30m<sup>2</sup>/unit)\*
  - ✘ Pergola Compact - 4.5m wide x 4m (up to 18m<sup>2</sup>/unit)\*
  - ✘ Pergola Stretch - 7m wide x 7m (or 25m x 7m using 5 covers)\*
- \*Pergolas can be coupled to cover larger areas

- ✘ Fixture - Fixed to Wall + Concrete Foundation or Ballast Boxes\*\*
- In combination with Markilux Syncra, while providing a freestanding structure, all Pergolas can reach double projections
- \*\*Ballast Boxes cannot be use on Pergola Stretch

- ✓ Wind Resistance Class 3 - Beaufort 6 (25-31mph)
- ✓ Lateral Wind Protection and Privacy Screens available (optional)



## Pergola Compact

Semi-Retracted Markilux Pergola Compact



Optional LED Line in the Cassette



Square Compact Cassette



# Markilux Markant

Markilux Markant integrated into the existing architecture, featuring Vertical Cassette Roller Blind



Freestanding Markilux Markant, featuring IR Heaters & LED Lines

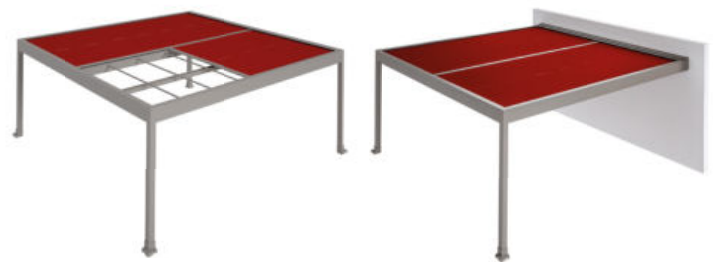


Markilux Markant with multiple fields individually retracted

## An impressive take on sun and wet weather protection.

The freestanding awning system Markilux Markant is a protection against sun, wind and rain, that can be tailored to your precise requirements. The awning, integrated into the frame, lends the system a textile character, its fabrics making it possible to create the pleasant colour ambience you have in mind.

The Markilux Markant offers protection, security, freedom, outstanding looks and comfort in a purist design. As a stand-alone unit or integrated into the existing architecture it makes a big impression in any situation.



Markilux Markant as a stand-alone unit (left) or integrated into the existing architecture (right)



### Infrared Heaters\*

Frame-mounted IR Heaters, 2500W, dimmable in 3 stages.

\*Optional features



### LED Line\*

LED Line in the frame and/or in the gutter.



### LED Spotlights\*

LED Spotlights attached to the gutter.



### Markilux Format Lift 700\*

Integrated height adjustable privacy & wind protection screens.

## Characteristics & Specifications

- ✂ Maximum post separation up to **6m x 6m** with two independently functioning awnings or Up to **3m x 6m** (as a 1-field unit)

**Overall Height 2.6m** (Other heights are possible)

- ✂ **Fixture** - Freestanding or with Wall Fixture to one side

- ⚙ **Operation** - Radio-Controlled Motor in io Technology as standard

- ✓ **Wind Resistance** Class 3 - Beaufort 6 (25-31mph)
- ✓ **Water Drainage** through the centre of the fabric into the gutter
- ✓ **Lateral Wind Protection** and **Privacy Screens** available (optional)



Several units of Markilux Markant used in a Commercial Setting feat. IR Heaters & LED Lines

# Awning Covers

*Innovative technology, high grade materials, comprehensive quality management and close to 100 years of experience in designing and developing top quality awning covers.*

As a leading manufacturer, Markilux currently offers a range of fabrics with over 250 patterns in coordinated colour groups as well as extremely broad colour palette that allows your new awning to match your imagination and property style.

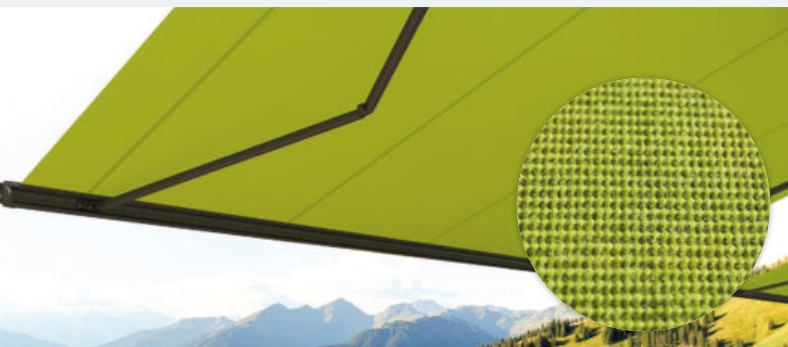
Made in Germany in accordance with strict quality standards using the most modern weaving technology and offer the highest degree of UV protection of UPF 50+.

In addition all fabrics are finished with a special snc coating, developed by Markilux, that creates a self-cleaning effect, providing amazing longevity and resistance against rain, light and temperature fluctuations. Oeko-Tex standard 100 certificate guarantees that they are free from chemicals and harmful dyes.



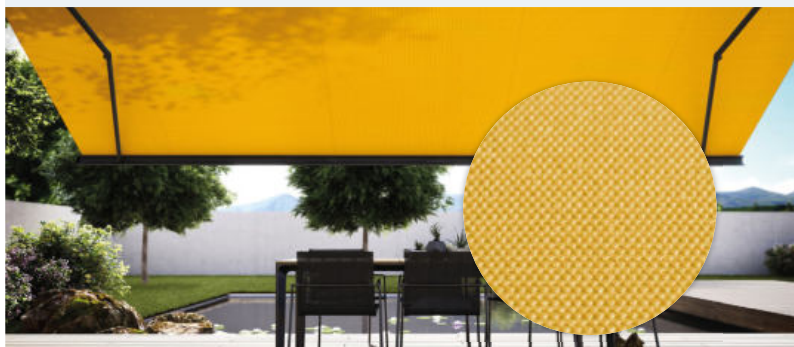
## Sunvas | Soft Glow, Textile-like to Touch

*The Sunvas awning cover will provide a textile character and more of a traditional feel due to the natural appearance and more fibrous texture. The fabric itself is man made polyester from Germany with a UV protection factor of 50+ along with a self cleaning effect and fade resistance ensures a high quality awning for many years to come.*

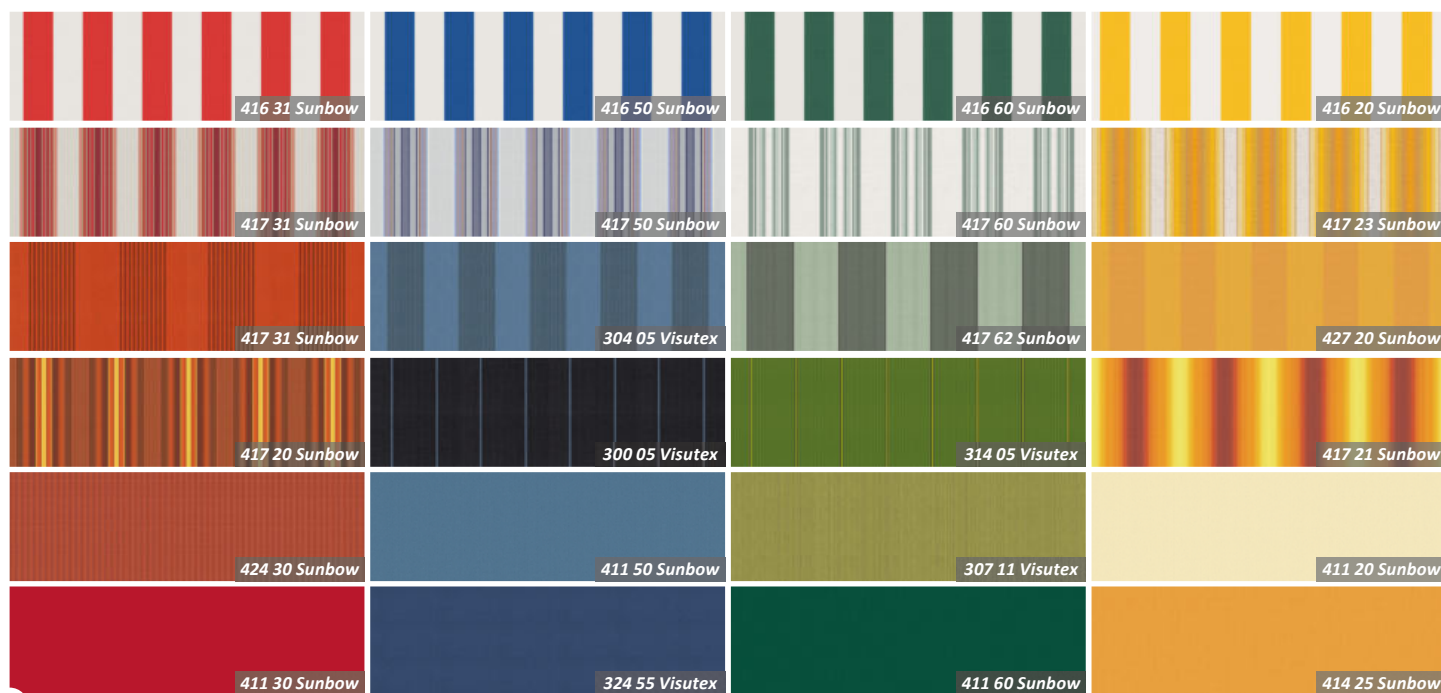


## Sunsilk | Brilliant Luminosity, Silky Smooth Finish

*High grade silky smooth fabric made from refined high tech polyester. The Sunsilk allows the sunshine to pass through the fibre better than other fabrics on the market. UV protection factor (UPF) of 50+ , resistant to fading, self-cleaning effect (any dirt that accumulates on this fabric is collected & washed away by rain or a little water as long as the pitch of the awning is at least 14 degrees).*



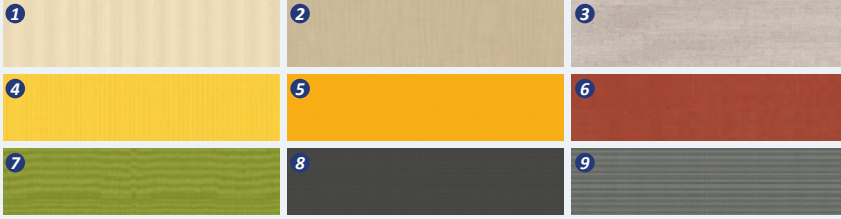
*A small selection of available patterns and colours from Markilux's Visutex & Sunbow range of fabrics*



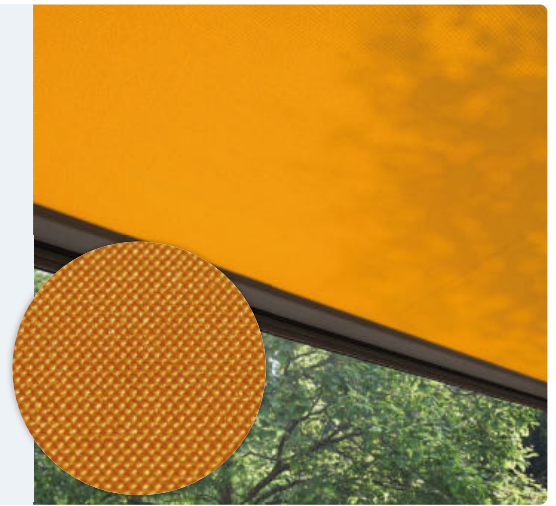


## Perla FR | Brilliant Luminosity, Silky Smooth Finish

Perla FR comes with a **transparent waterproof coating** ensuring a uniformed look on both sides of the cover as well as an excellent protection against both sun and rain. The Markilux Perla FR fabric cover is **highly fire retardant** and can be used in places where fire safety regulations are in place. UV protection factor of 50+.

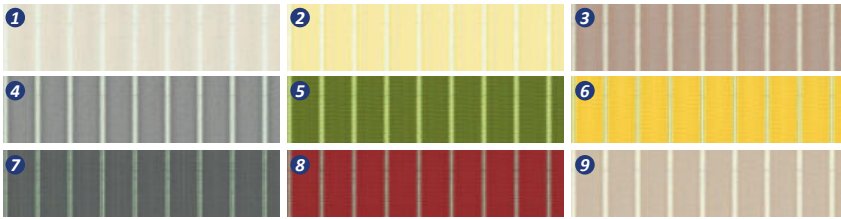


1. 372 37 | 2. 372 07 | 3. 372 50 | 4. 372 01 | 5. 371 31 | 6. 372 30 | 7. 372 86 | 8. 372 97 | 9. 372 83



## Perfotex | Ideal for Conservatories

Gaps in the warp, woven into the fabric, make the material **permeable to both air and water**. The risk of the formation of water troughs in rain showers and the **build-up of excessive heat between cover and glass** is reduced. The **aluminium coating** applied to the series 332\* .. reduces solar gain as well. The weather fast finish also **inhibits the accumulation of dirt** and offers excellent water repellency.

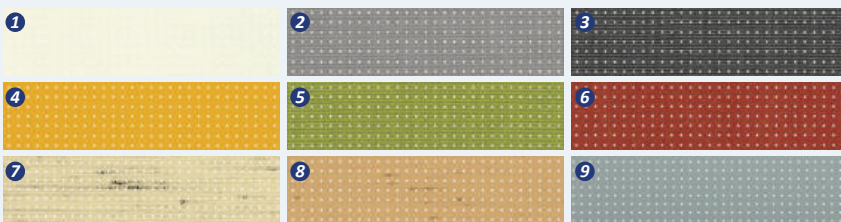


1. \*332 07 | 2. \*332 01 | 3. \*332 27 | 4. \*332 18 | 5. 331 06 | 6. 331 01 | 7. 331 08 | 8. 331 03 | 9. \*332 17

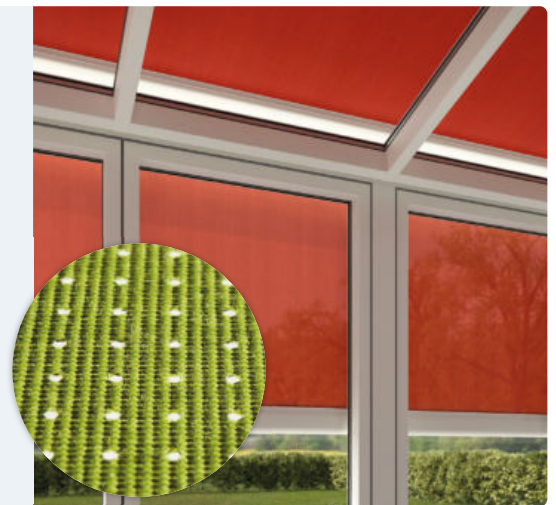


## Transolair | Solar Protection with a View

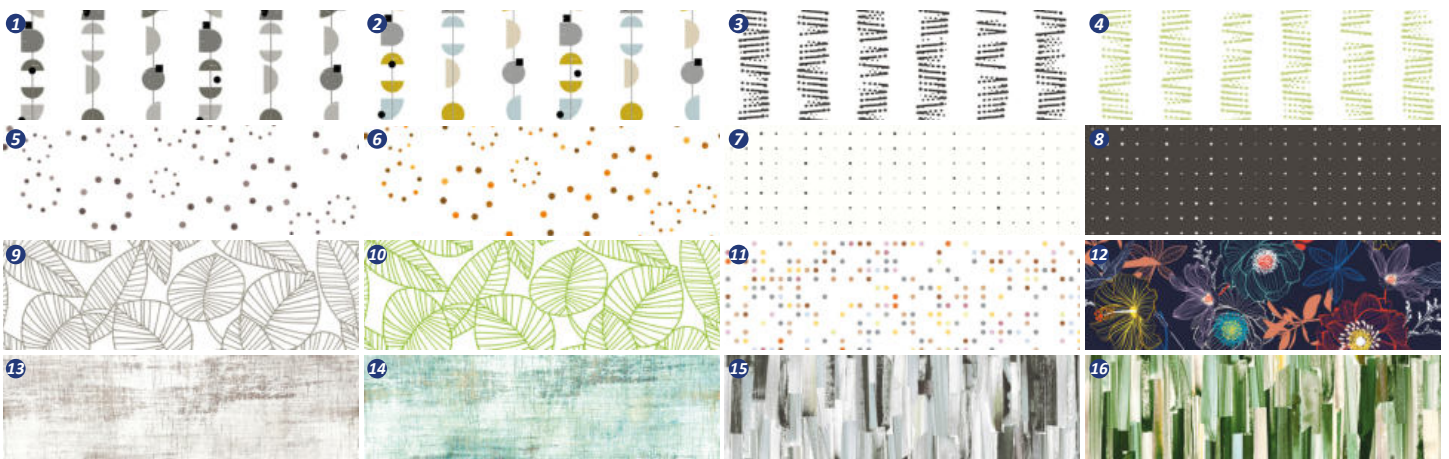
The Markilux Transolair is a high tech polyester fabric with special perforations, enabling transparency to the user whilst having light, air & wind permeability. The breathable nature of the fabric ensures any build up of warm air is dispersed allowing you to keep rooms cool and is especially recommended for vertical blinds, shadeplus/drop valance.



1. 338 09 | 2. 339 95 | 3. 339 97 | 4. 338 31 | 5. 339 96 | 6. 339 30 | 7. 338 47 | 8. 339 37 | 9. 338 08



## The NEW Smart Art Collection | Inspired by Art, Printed - as if Painted



1. Chain Grey | 2. Chain Green | 3. Stripe Grey | 4. Stripe Green | 5. Circles Grey | 6. Circles Orange | 7. Glow Bright | 8. Glow Dark  
9. Leaves Grey | 10. Leaves Green | 11. Dots Rose | 12. Blossom | 13. Layers Grey | 14. Layers Green | 15. Painting Grey | 16. Painting Green

# Optional Accessories

*Manual, touch-button or automatic. Ease of operation that meets the highest demands and any weather conditions.*

The choice is yours: manual operation (spring-assisted on request), hard wired motor or radio controlled motor with remote control, are all possible on most models. You can even operate the system while you are away via smartphone or tablet. Better yet, why not put your feet up and add light, wind and rain sensors to provide automatic intelligent control of your Markilux designer awning?



## Light & Wind Sensor



*Depending on the current weather situation, this intelligent control system will extend and retract your awning automatically.*

## Light & Rain Sensors



*Intelligent control of your awning depending on the ambient solar light intensity (Light Sensor). To protect the awning cover, the awning retracts automatically in the case of precipitation (Rain Sensor).*

## Markilux Vibrabox



*Intelligent, sensitive and independent of the mains. The vibrabox is an inertia sensor and depending on wind load, an awning driven by radio-controlled motor will be retracted automatically to protect it.*

## Spotlights



*Under the cassette or in the front profile, LED Spotlights can be pivoted and dimmed to create a lovely atmosphere on your patio in the evening.*

## LED Spotline



*The elegant light bar in a powder-coated aluminium housing, that can be fitted almost anywhere. The LED spotlights can be swiveled and dimmed. Available in two sizes: 180cm with 3 spotlights and 300cm with 5 spotlights.*

## LED Lines in Arms



*LED Lines in the folding arms guarantee a lovely evening outside on the patio or balcony with friends.*

*(Only available on models 1300, 1600, 1700 & 1710)*

## Infrared Heaters



*Feel the warmth in an instant and enjoy the evening outside for even longer. Either as a stand-alone unit (1400W) or installed under your awning (2500W), the latter optionally dimmable in three stages.*

## Remote Control



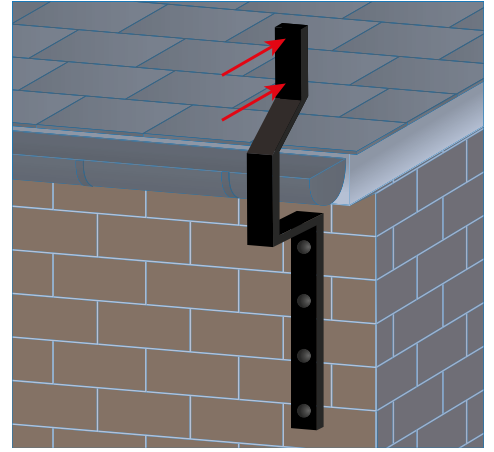
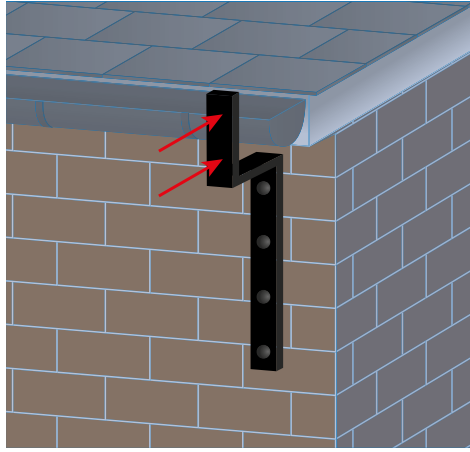
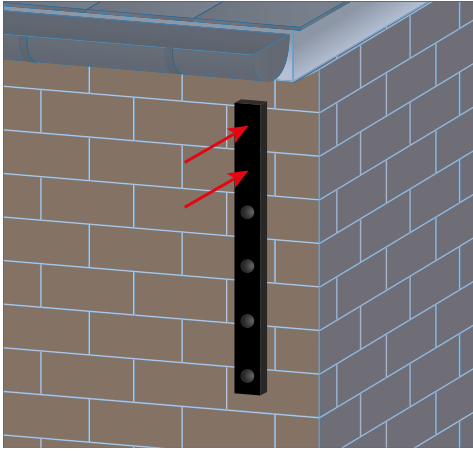
*Comfort can be so easy. Awning, Shadeplus, light and warmth at the touch of a button using remote handset or a wall switch. Control also available via smartphone app thanks to io technology.*

## Arm Technology



*Bionic Tendon (left) Inspired by nature, made from high-tech textile fibres, provides friction free and virtually silent flexion of the arms. Twin Steel-Link Chain (right) Protected by the arm covering itself from any weathering and corrosion whilst also offering a more discreet profile and look.*

## Custom Brackets for those Difficult Installation Situations



## Other Retractable Awnings from the Markilux Range



**NEW for 2022**  
**Markilux MX-2**

Up to **W 600 x P 300** cm ( or 500 x 350 cm )  
Full Cassette Design  
Fixture - Face, Top or Eaves  
Operation - Automatic  
Options - LED Line in the Cassette,  
LED Spotlights under the Cassette



**Markilux 970**

Up to **W 600 x P 300** cm ( or 500 x 350 cm )  
Full Cassette Design  
Fixture - Face, Top or Eaves, (Reveal)  
Operation - Manual or Automatic  
Options - LED Line in the Cassette,  
LED Spotlights under the Cassette, Anodised  
Front Panels, Shadeplus, Colour Combinations



**Markilux MX-1 Compact**

Up to **W 700 x P 415** cm  
Full Cassette Design  
Fixture - Face  
Operation - Automatic  
Options - LED Line/Spotlights in Front Profile,  
LED Ambient Lighting, Colour Combinations,  
Valance, Shadeplus



**Markilux 3300**

Up to **W 700 x P 400** cm (can be coupled)  
Full Cassette Design  
Fixture - Face, Top or Eaves (In Wall or Recess)  
Operation - Manual or Automatic  
Options - Valance



**Markilux 1710**

Up to **W 700 x P 350** cm (can be coupled)  
Full Cassette Design  
Fixture - Face, Top or Eaves  
Operation - Manual or Automatic  
Options - Wall Sealing Profile, Polished  
Chrome End Caps, Valance, Stretch Version



**Markilux 930**

Up to **W 500 x P 300** cm  
Open Design  
Fixture - Face or Top  
Operation - Manual or Automatic



**Markilux 1700**

Up to **W 700 x P 400** cm (can be coupled)  
Open Design  
Fixture - Face, Top or Eaves  
Operation - Manual or Automatic  
Options - Polished Chrome End Caps, Valance,  
LED Line in Folding Arms, Stretch Version,



**Markilux 1300**

Up to **W 700 x P 400** cm (can be coupled)  
Open Design  
Fixture - Face, Top or Eaves  
Operation - Manual or Automatic  
Options - Pitch Adjustment Gear, Shadeplus,  
LED Line in Folding Arms



**Talk to the Experts**  
**0800 716 569**



### What our customers say?

*"From the initial telephone conversation, site survey, written quotation right up to the actual installation the level of service was excellent."*



Customer in Harrow, March 2022

*"I used Access to supply and install a Markilux pergola awning. Excellent service from a company I would highly recommend."*



Customer in Romford, March 2022

*"The quote was very competitive. The work was carried out to a very high standard. Highly recommended in every respect."*



Customer in Watford, March 2022

Proud members of



Access Awnings is a trading name of Access Garage Doors Ltd. | Company No. 1255479 Registered in England and Wales

[www.accessawnings.com](http://www.accessawnings.com)