

***dacoma***  
**SPILLEXCEL**

***SPILL CONTROL SPECIALISTS***

[www.commercialspillsolutions.co.uk](http://www.commercialspillsolutions.co.uk)

# Commercial Fuel Solutions Ltd

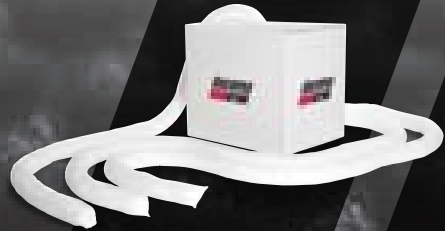
*With over 25 years experience, we are a leading supplier of spill control products incorporating absorbents, spill kit systems, drain protection and spill containment.*

*We are a flexible, friendly and accommodating supplier with a national network of field based professionals ready to offer support and guidance to help you choose the right products for your particular situation. In addition, we have a team of highly trained internal account managers who are always on hand to offer full technical support, guidance, quotations, order facilitation and any other after sales support that may be required.*

*Within this brochure we have listed our range of tried and tested products specifically designed to help you protect both your staff and the working environment. Absorbents and spill kits are supplied in distinct product categories; oil only, general maintenance and chemical to help you choose the right product for the required application. Marine, drain protection and spill containment are key areas where we are able to provide excellent value for money.*

*With an emphasis on quality, customer care and reliability, we pride ourselves on providing the best service in the business.*

**OIL ONLY**  
ABSORBENTS & SPILL KITS



PAGE 2-11



**MARINE**  
ABSORBENTS



PAGE 12-15



**MAINTAINENCE**  
ABSORBENTS & SPILL KITS



PAGE 16-25



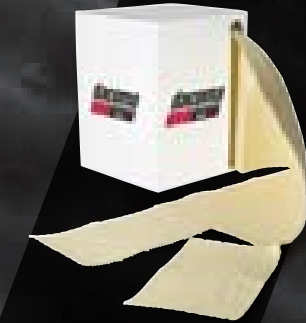
**CHEMICAL**  
ABSORBENTS & SPILL KITS



PAGE 34-35



**DRAIN PROTECTION**



PAGE 26-33



PAGE 36-41



**SPILL CONTAINMENT**

**DACOMA SPILLEXCEL**  
**OIL-ONLY**

*Dacoma SpillExcel Oil Only products have been created for use with all types of oil management. Designed to absorb oil and fuel, our range of Oil Only products are the best in the business and will provide peace of mind both for day-to-day maintenance and also in the event of a large spill.*

*All our Oil Only products utilise our advanced Hydrophobic technology which means that they are completely water repellent and will only absorb oils and fuel.*

*As well as helping you conform with current legislation, our Oil Only products will enable you to provide complete protection of your work environment.*

**CLASSIC****EXCEL****ELITE****ELITE-GRANDE**



# CLASSIC

PLAIN NON DIMPLED & UNPERFORATED RANGE

- PROVEN TRACK RECORD
- WORKHORSE OF THE FAMILY
- EXCELLENT ECONOMY
- FASTER ABSORPTION RATES

## CLASSIC '300 SERIES'

PLAIN OIL-ONLY PADS



/// PRODUCT CODE	CL-1300
/// DIMENSIONS	40CM X 50CM
/// CAPACITY	1.0 LITRE PER PAD
/// PACK QUANTITY	100

## CLASSIC '200 SERIES'

PLAIN OIL-ONLY PADS



/// PRODUCT CODE	CL-1200
/// DIMENSIONS	40CM X 50CM
/// CAPACITY	0.5 LITRES PER PAD
/// PACK QUANTITY	200

# EXCEL

DIMPLED RANGE

- EXCELLENT ABSORBENCY RATES
- EASY TO USE
- SUITABLE FOR ALL APPLICATIONS
- BONDED FOR INCREASED FLUID RETENTION



**EXCEL '200 SERIES'**  
DIMPLED OIL-ONLY PADS

/// PRODUCT CODE	XL-1200
/// DIMENSIONS	40CM X 50CM
/// CAPACITY	0.5 LITRES PER PAD
/// PACK QUANTITY	200



**EXCEL '300 SERIES'**  
DIMPLED OIL-ONLY PADS

/// PRODUCT CODE	XL-1300
/// DIMENSIONS	40CM X 50CM
/// CAPACITY	1.0 LITRES PER PAD
/// PACK QUANTITY	100



**EXCEL '300 SERIES'**  
DIMPLED OIL-ONLY PADS

/// PRODUCT CODE	XL-1330
/// DIMENSIONS	30CM X 40CM
/// CAPACITY	0.6 LITRES PER PAD
/// PACK QUANTITY	100

/// PRODUCT CODE	XL-1301
/// DIMENSIONS	38CM X 46M
/// CAPACITY	86.0 LITRES PER ROLL
/// PACK QUANTITY	1



**EXCEL '300 SERIES'**  
DIMPLED OIL-ONLY ROLL



**EXCEL '300 SERIES'**  
DIMPLED OIL-ONLY ROLL - NON PERFORATED

/// PRODUCT CODE	XL-1306
/// DIMENSIONS	48CM X 44M
/// CAPACITY	106.0 LITRES PER ROLL
/// PACK QUANTITY	1



**EXCEL '300 SERIES'**  
DIMPLED OIL-ONLY ROLL



/// PRODUCT CODE	XL-1302
/// DIMENSIONS	76CM X 46M
/// CAPACITY	170.0 LITRES PER ROLL
/// PACK QUANTITY	1

# EXCEL

DIMPLED RANGE

- EXCELLENT ABSORBENCY RATES
- EASY TO USE
- SUITABLE FOR ALL APPLICATIONS
- BONDED FOR INCREASED FLUID RETENTION



## EXCEL OIL-ONLY CUSHION



/// PRODUCT CODE	XL-1016
/// DIMENSIONS	23CM X 38CM
/// CAPACITY	3.0 LITRES PER CUSHION
/// PACK QUANTITY	16

## EXCEL '300 SERIES'

DIMPLED OIL-ONLY ROLL - NON PERFORATED

/// PRODUCT CODE	XL-1307
/// DIMENSIONS	96CM X 44M
/// CAPACITY	211.0 LITRES PER ROLL
/// PACK QUANTITY	1



## EXCEL '300 SERIES'

DIMPLED OIL-ONLY DRUM TOP COVER

/// PRODUCT CODE	XL-1305
/// DIMENSIONS	56CM DIAMETER
/// CAPACITY	1.0 LITRE PER PAD
/// PACK QUANTITY	50



**15LTR EXCEL 'CLIP-TOP BAG'**

OIL-ONLY SPILL KIT

/// PRODUCT CODE	XL-4015
/// CONTENTS	5X ELITE '300 SERIES' PADS 12X ELITE '200 SERIES' PADS 1X ELITE 1.2M SOCK 1X WASTE BAG C/W CABLE TIE
/// PACK QUANTITY	1

ADDITIONAL SPILL KITS ARE ALSO AVAILABLE IN THE FOLLOWING CAPACITIES:  
20, 25, 40, 80, 360, 500, 750, 1000 LITRES

/// PRODUCT CODE	XL-4030
/// CONTENTS	8X ELITE '300 SERIES' PADS 18X ELITE '200 SERIES' PADS 3X ELITE 1.2M SOCKS 3X WASTE BAG C/W CABLE TIE
/// PACK QUANTITY	1

ADDITIONAL SPILL KITS ARE ALSO AVAILABLE IN THE FOLLOWING CAPACITIES:  
20, 25, 40, 80, 360, 500, 750, 1000 LITRES



**30LTR EXCEL 'CLIP-TOP BAG'**

OIL-ONLY SPILL KIT

# ELITE

SINGLE SIDED COVERSTOCK RANGE

- INCREASED TENSILE STRENGTH
- LOW LINT
- WORKSHOP FRIENDLY
- IDEAL FOR WALKWAY COVERAGE

## ELITE '300 SERIES'

SINGLE-SIDED OIL-ONLY PADS



/// PRODUCT CODE	EL-1300
/// DIMENSIONS	40CM X 50CM
/// CAPACITY	1.0 LITRE PER PAD
/// PACK QUANTITY	100

## ELITE '200 SERIES'

SINGLE-SIDED OIL-ONLY PADS



/// PRODUCT CODE	EL-1200
/// DIMENSIONS	40CM X 50CM
/// CAPACITY	0.5 LITRES PER PAD
/// PACK QUANTITY	200

## ELITE '300 SERIES'

SINGLE-SIDED OIL-ONLY ROLL



/// PRODUCT CODE	EL-1301
/// DIMENSIONS	50CM X 40M
/// CAPACITY	100.0 LITRES PER ROLL
/// PACK QUANTITY	1



**ELITE '300 SERIES'**  
SINGLE-SIDED OIL-ONLY ROLL



/// PRODUCT CODE	EL-1302
/// DIMENSIONS	90CM X 40M
/// CAPACITY	180.0 LITRES PER ROLL
/// PACK QUANTITY	1

/// PRODUCT CODE	EL-1001
/// DIMENSIONS	3.0M X 7.0CM
/// CAPACITY	10.0 LITRES PER SOCK
/// PACK QUANTITY	8

**ELITE OIL-ONLY SOCK**



**ELITE OIL-ONLY SOCK**



/// PRODUCT CODE	EL-1000
/// DIMENSIONS	1.2M X 7.0CM
/// CAPACITY	4.0 LITRES PER SOCK
/// PACK QUANTITY	20

# ELITE-GRANDE

DOUBLE SIDED COVERSTOCK RANGE

- MAXIMUM STRENGTH
- LINT FREE
- SOFTER FOR DELICATE APPLICATIONS
- EXTREMELY VERSATILE

## ELITE-GRANDE '300 SERIES'

DOUBLE-SIDED OIL-ONLY PADS



/// PRODUCT CODE	ELG-1300
/// DIMENSIONS	40CM X 50CM
/// CAPACITY	1.0 LITRE PER PAD
/// PACK QUANTITY	100

## ELITE-GRANDE '200 SERIES'

DOUBLE-SIDED OIL-ONLY PADS

/// PRODUCT CODE	ELG-1200	ELG-1210	ELG-1250
/// DIMENSIONS	40CM X 50CM	40CM X 50CM	40CM X 50CM
/// CAPACITY	0.5 LITRES PER PAD	0.5 LITRES PER PAD	0.5 LITRES PER PAD
/// PACK QUANTITY	200	100	50





**50LTR ELITE-GRANDE 'SHOULDER BAG'**

OIL-ONLY SPILL KIT

/// <b>PRODUCT CODE</b>	ELG-4050
/// <b>CONTENTS</b>	15X ELITE '300 SERIES' PADS 30X ELITE '200 SERIES' PADS 4X ELITE 1.2M SOCKS 4X EXCEL CUSHIONS 4X WASTE BAG C/W CABLE TIE
/// <b>PACK QUANTITY</b>	1

ADDITIONAL SPILL KITS ARE ALSO AVAILABLE IN THE FOLLOWING CAPACITIES:  
20, 25, 40, 80, 360, 500, 750, 1000 LITRES

**120 & 240LTR ELITE-GRANDE 'WHEELED BIN'**

OIL-ONLY SPILL KIT

/// <b>PRODUCT CODE</b>	ELG-4120 (120LTR BIN)	ELG-4240 (240LTR BIN)
/// <b>CONTENTS</b>	25X ELITE '300 SERIES' PADS 50X ELITE '200 SERIES' PADS 8X ELITE 1.2M SOCKS 5X EXCEL CUSHIONS 1X 0.5KG LEAK BLOCK GRANULES 8X WASTE BAG C/W CABLE TIE	50X ELITE '300 SERIES' PADS 1000X ELITE '200 SERIES' PADS 16X ELITE 1.2M SOCKS 10X EXCEL CUSHIONS 2X 0.5KG LEAK BLOCK GRANULES 16X WASTE BAG C/W CABLE TIE
/// <b>PACK QUANTITY</b>	1	1

ADDITIONAL SPILL KITS ARE ALSO AVAILABLE IN THE FOLLOWING CAPACITIES:  
20, 25, 40, 80, 360, 500, 750, 1000 LITRES



**DACOMA SPILLEXCEL  
MARINE**

*Marine spills can have very serious consequences, especially on the marine ecosystem. Dacoma SpillExcel have developed a range of products designed to aid with the clear-up process of 'off-shore' oil and fuel spills. Our market leading open-net boom demonstrates our commitment to product development.*

**EXCEL****ELITE-GRANDE**

# EXCEL

BOOM RANGE

- EXCELLENT ABSORBENCY
- EASY TO CONNECT
- HIGH TENSILE DRAW CORD
- PERMANENTLY BUOYANT

/// PRODUCT CODE	XL-1008
/// DIMENSIONS	3M X 20CM
/// CAPACITY	79.0 LITRES PER BOOM
/// PACK QUANTITY	4

## EXCEL OIL-ONLY MARINE BOOM



## EXCEL OIL-ONLY MARINE BOOM

/// PRODUCT CODE	XL-1005
/// DIMENSIONS	3M X 13CM
/// CAPACITY	30.0 LITRES PER BOOM
/// PACK QUANTITY	4



# EXCEL

SWEEPS

- PERFECT CLEANUP SOLUTION
- LARGE COVERAGE FOR EFFICIENCY
- FULLY BUOYANT
- MULTIPLE APPLICATIONS

/// PRODUCT CODE	XL-1007
/// DIMENSIONS	48CM X 30.5M
/// CAPACITY	94.0 LITRES PER SWEEP
/// PACK QUANTITY	1



## EXCEL OIL-ONLY MARINE SWEEP

# ELITE-GRANDE

OPEN NET BOOM

- DESIGNED FOR OPEN SEA APPLICATION
- PROVEN HYDROPHOBIC TECHNOLOGY
- PERFECT FOR CRUDE OIL SPILLS
- SUITABLE FOR ALL SPILL SIZES

## ELITE-GRANDE OIL-ONLY 'OPEN-NET' MARINE BOOM



/// PRODUCT CODE	ELG-1005
/// DIMENSIONS	3M X 13CM
/// CAPACITY	30.0 LITRES PER BOOM
/// PACK QUANTITY	4



The flagship Dacoma SpillExcel marine product is the Elite-Grande Open Net Boom and represents the best available solution for open sea applications.

Suitable for crude oil spills, they are designed to withstand heavy seas and incorporate the very latest Hydrophobic Technology resulting in a boom that only absorbs oil and not water. The added benefit of this technology means that even when the boom is saturated with oil, it will not sink.

Dacoma SpillExcel booms are manufactured using strands of meltblown polypropelene encapsulated within marine compatible nylon netting coupled to high-tensile draw cords with marine grade stainless steel carabina linking clips. The angular nature of the fill product provides natural voids for the maximum absorption of viscous oils

With our overlapping linkage system, the Elite-Grande booms have the added advantage of being easily joined together to provide a continuous boom to capture the entire spill.



## **DACOMA SPILLEXCEL** **MAINTENANCE**

*Made of the very best materials available, the Dacoma SpillExcel Maintenance range of pads, socks and spill kits can be used across a wide variety of situations and have been designed to absorb most fluids and hazardous chemicals. From small drips to larger spills, we have the right solution for you.*

*The maintenance range of products are coloured grey to aid recognition when a quick response is required thereby ensuring you get the right product for the job.*

**CLASSIC**

**EXCEL**

**ELITE**

**ELITE-GRANDE**

## CLASSIC

PLAIN NON DIMPLED & UNPERFORATED RANGE

- PROVEN TRACK RECORD
- WORKHORSE OF THE FAMILY
- EXCELLENT ECONOMY
- FASTER ABSORPTION RATES

### CLASSIC '300 SERIES'

PLAIN MAINTENANCE PADS



/// PRODUCT CODE	CL-2300
/// DIMENSIONS	40CM X 50CM
/// CAPACITY	1.0 LITRE PER PAD
/// PACK QUANTITY	100

/// PRODUCT CODE	CL-2200
/// DIMENSIONS	40CM X 50CM
/// CAPACITY	0.5 LITRES PER PAD
/// PACK QUANTITY	200

### CLASSIC '200 SERIES'

PLAIN MAINTENANCE PADS



## EXCEL

DIMPLED RANGE

- EXCELLENT ABSORBENCY RATES
- EASY TO USE
- SUITABLE FOR ALL APPLICATIONS
- BONDED FOR INCREASED FLUID RETENTION

### EXCEL '300 SERIES'

DIMPLED MAINTENANCE PADS



/// PRODUCT CODE	XL-2300
/// DIMENSIONS	40CM X 50CM
/// CAPACITY	1.0 LITRES PER PAD
/// PACK QUANTITY	100

/// PRODUCT CODE	XL-2200
/// DIMENSIONS	40CM X 50CM
/// CAPACITY	0.5 LITRES PER PAD
/// PACK QUANTITY	200

### EXCEL '200 SERIES'

DIMPLED MAINTENANCE PADS



### EXCEL '300 SERIES'

DIMPLED MAINTENANCE PADS



/// PRODUCT CODE	XL-2330
/// DIMENSIONS	30CM X 40CM
/// CAPACITY	0.6 LITRES PER PAD
/// PACK QUANTITY	100

## EXCEL '300 SERIES'

DIMPLED MAINTENANCE ROLL

/// PRODUCT CODE	XL-2301
/// DIMENSIONS	38CM X 46M
/// CAPACITY	86.0 LITRES PER ROLL
/// PACK QUANTITY	1



## EXCEL '300 SERIES'

DIMPLED MAINTENANCE ROLL

/// PRODUCT CODE	XL-2302
/// DIMENSIONS	76CM X 46M
/// CAPACITY	170.0 LITRES PER ROLL
/// PACK QUANTITY	1



## EXCEL '300 SERIES'

DIMPLED MAINTENANCE ROLL

/// PRODUCT CODE	XL-2303
/// DIMENSIONS	38CM X 24M
/// CAPACITY	44.0 LITRES PER ROLL
/// PACK QUANTITY	1





## EXCEL

DIMPLED RANGE

- EXCELLENT ABSORBENCY RATES
- EASY TO USE
- SUITABLE FOR ALL APPLICATIONS
- BONDED FOR INCREASED FLUID RETENTION

### EXCEL MAINTENANCE CUSHION

/// PRODUCT CODE	XL-2016
/// DIMENSIONS	23CM X 38CM
/// CAPACITY	4.0 LITRES PER CUSHION
/// PACK QUANTITY	16



### EXCEL '300 SERIES'

DIMPLED MAINTENANCE ROLL

/// PRODUCT CODE	XL-2304
/// DIMENSIONS	30CM X 40M
/// CAPACITY	59.0 LITRES PER ROLL
/// PACK QUANTITY	1



/// PRODUCT CODE	XL-2305
/// DIMENSIONS	56CM DIAMETER
/// CAPACITY	1.0 LITRE PER PAD
/// PACK QUANTITY	50

### EXCEL '300 SERIES'

DIMPLED MAINTENANCE DRUM TOP COVER





## EXCEL MAINTENANCE BOOM

/// PRODUCT CODE	XL-2005
/// DIMENSIONS	13CM X 3M
/// CAPACITY	30.0 LITRES PER BOOM
/// PACK QUANTITY	4



## 15LTR EXCEL 'CLIP-TOP BAG' MAINTENANCE SPILL KIT

/// PRODUCT CODE	XL-5015
/// CONTENTS	5X ELITE '300 SERIES' PADS 12X ELITE '200 SERIES' PADS 1X ELITE 1.2M SOCK 1X WASTE BAG C/W CABLE TIE
/// PACK QUANTITY	1

ADDITIONAL SPILL KITS ARE ALSO AVAILABLE IN THE FOLLOWING CAPACITIES:  
20, 25, 40, 80, 360, 500, 750, 1000 LITRES



## 30LTR EXCEL 'CLIP-TOP BAG' MAINTENANCE SPILL KIT

/// PRODUCT CODE	XL-5030
/// CONTENTS	8X ELITE '300 SERIES' PADS 18X ELITE '200 SERIES' PADS 3X ELITE 1.2M SOCKS 3X WASTE BAG C/W CABLE TIE
/// PACK QUANTITY	1

ADDITIONAL SPILL KITS ARE ALSO AVAILABLE IN THE FOLLOWING CAPACITIES:  
20, 25, 40, 80, 360, 500, 750, 1000 LITRES



## ELITE

SINGLE SIDED COVERSTOCK RANGE

- INCREASED TENSILE STRENGTH
- LOW LINT
- WORKSHOP FRIENDLY
- IDEAL FOR WALKWAY COVERAGE

### ELITE '300 SERIES'

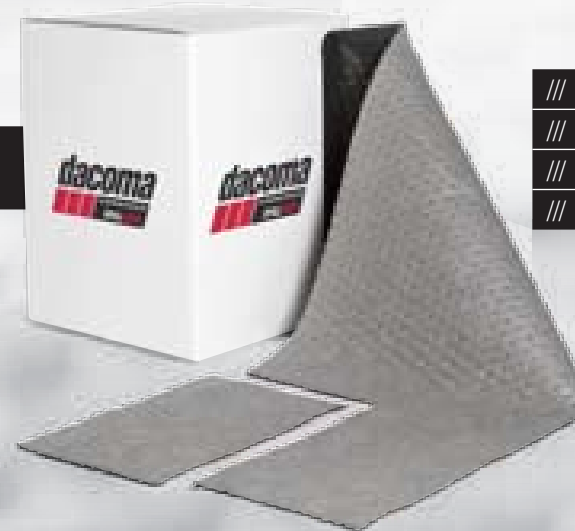
SINGLE-SIDED MAINTENANCE PADS



/// PRODUCT CODE	EL-2300
/// DIMENSIONS	40CM X 50CM
/// CAPACITY	1.0 LITRE PER PAD
/// PACK QUANTITY	100

### ELITE '300 SERIES'

SINGLE-SIDED MAINTENANCE ROLL



/// PRODUCT CODE	EL-2301
/// DIMENSIONS	50CM X 40M
/// CAPACITY	100.0 LITRES PER ROLL
/// PACK QUANTITY	1

### ELITE '200 SERIES'

SINGLE-SIDED MAINTENANCE PADS



/// PRODUCT CODE	EL-2200
/// DIMENSIONS	40CM X 50CM
/// CAPACITY	0.5 LITRES PER PAD
/// PACK QUANTITY	200

## ELITE '300 SERIES' SINGLE-SIDED MAINTENANCE ROLL

/// PRODUCT CODE	EL-2002
/// DIMENSIONS	90CM X 40M
/// CAPACITY	180.0 LITRES PER ROLL
/// PACK QUANTITY	1



## ELITE MAINTENANCE SOCK

/// PRODUCT CODE	EL-2000
/// DIMENSIONS	1.2M X 7.0CM
/// CAPACITY	5.0 LITRES PER SOCK
/// PACK QUANTITY	20



## ELITE MAINTENANCE SOCK

/// PRODUCT CODE	EL-2001
/// DIMENSIONS	3.0M X 7.0CM
/// CAPACITY	12.5 LITRES PER SOCK
/// PACK QUANTITY	8



## ELITE-GRANDE

DOUBLE SIDED COVERSTOCK RANGE

- MAXIMUM STRENGTH
- LINT FREE
- SOFTER FOR DELICATE APPLICATIONS
- IMPROVED FLUID RETENTION

### ELITE-GRANDE '300 SERIES'

DOUBLE-SIDED MAINTENANCE PADS



/// PRODUCT CODE	ELG-2300
/// DIMENSIONS	40CM X 50CM
/// CAPACITY	1.0 LITRE PER PAD
/// PACK QUANTITY	100

### ELITE-GRANDE '200 SERIES'

DOUBLE-SIDED MAINTENANCE PADS

/// PRODUCT CODE	ELG-2200	ELG-2210	ELG-2250
/// DIMENSIONS	40CM X 50CM	40CM X 50CM	40CM X 50CM
/// CAPACITY	0.5 LITRES PER PAD	0.5 LITRES PER PAD	0.5 LITRES PER PAD
/// PACK QUANTITY	200	100	50



## 50LTR ELITE-GRANDE 'SHOULDER BAG'

MAINTENANCE SPILL KIT



/// PRODUCT CODE	ELG-5050
/// CONTENTS	15X ELITE-GRANDE '300 SERIES' PADS 30X ELITE-GRANDE '200 SERIES' PADS 4X ELITE 1.2M SOCKS 4X EXCEL CUSHIONS 4X WASTE BAG C/W CABLE TIE
/// PACK QUANTITY	1

ADDITIONAL SPILL KITS ARE ALSO AVAILABLE IN THE FOLLOWING CAPACITIES:  
20, 25, 40, 80, 360, 500, 750, 1000 LITRES

## 120 & 240LTR ELITE-GRANDE 'WHEELED BIN'

MAINTENANCE SPILL KIT

/// PRODUCT CODE	ELG-5120 (120LTR BIN)	ELG-5240 (240LTR BIN)
/// CONTENTS	25X ELITE-GRANDE '300 SERIES' PADS 50X ELITE-GRANDE '200 SERIES' PADS 8X ELITE 1.2M SOCKS 5X EXCEL CUSHIONS 1X 0.5KG LEAK BLOCK GRANULES 8X WASTE BAG C/W CABLE TIE	50X ELITE-GRANDE '300 SERIES' PADS 1000X ELITE-GRANDE '200 SERIES' PADS 16X ELITE 1.2M SOCKS 10X EXCEL CUSHIONS 2X 0.5KG LEAK BLOCK GRANULES 16X WASTE BAG C/W CABLE TIE
/// PACK QUANTITY	1	1

ADDITIONAL SPILL KITS ARE ALSO AVAILABLE IN THE FOLLOWING CAPACITIES:  
20, 25, 40, 80, 360, 500, 750, 1000 LITRES



**DACOMA SPILLEXCEL  
CHEMICAL**

*The Dacoma SpillExcel Chemical range of pads, socks and spill kits tick all the boxes. Whether you are in a laboratory simply trying to protect a work surface from a few drips or working in a factory with larger volumes of fluid, our Chemical spill control pads and socks come in a variety of sizes enabling you to choose exactly the right product for your situation. To help conform with the industry standard and for easy recognition, the Chemical range of products is all coloured yellow.*

*Whichever products you choose, you can be confident in the knowledge that you are using the very best products on the market to protect your environment.*

**CLASSIC****EXCEL****ELITE****ELITE-GRANDE**



## CLASSIC

PLAIN NON DIMPLED & UNPERFORATED RANGE

- PROVEN TRACK RECORD
- WORKHORSE OF THE FAMILY
- EXCELLENT ECONOMY
- FASTER ABSORPTION RATES

### CLASSIC '300 SERIES'

PLAIN CHEMICAL PADS



/// PRODUCT CODE	CL-3300
/// DIMENSIONS	40CM X 50CM
/// CAPACITY	1.0 LITRE PER PAD
/// PACK QUANTITY	100



/// PRODUCT CODE	CL-3200
/// DIMENSIONS	40CM X 50CM
/// CAPACITY	0.5 LITRES PER PAD
/// PACK QUANTITY	200



### CLASSIC '200 SERIES'

PLAIN CHEMICAL PADS



## EXCEL

DIMPLED RANGE

- EXCELLENT ABSORBENCY RATES
- EASY TO USE
- SUITABLE FOR ALL APPLICATIONS
- BONDED FOR INCREASED FLUID RETENTION

/// PRODUCT CODE	XL-3300
/// DIMENSIONS	40CM X 50CM
/// CAPACITY	1.0 LITRE PER PAD
/// PACK QUANTITY	100



### EXCEL '300 SERIES'

DIMPLED CHEMICAL PADS



### EXCEL '200 SERIES'

DIMPLED CHEMICAL PADS

/// PRODUCT CODE	XL-3200
/// DIMENSIONS	40CM X 50CM
/// CAPACITY	0.5 LITRES PER PAD
/// PACK QUANTITY	200



### EXCEL '300 SERIES'

DIMPLED CHEMICAL ROLL

/// PRODUCT CODE	XL-3301
/// DIMENSIONS	38CM X 46M
/// CAPACITY	86.0 LITRES PER
/// PACK QUANTITY	1



## EXCEL CHEMICAL CUSHION

/// PRODUCT CODE	XL-3016
/// DIMENSIONS	23CM X 38CM
/// CAPACITY	4.0 LITRES PER CUSHION
/// PACK QUANTITY	16



## EXCEL '300 SERIES' DIMPLED CHEMICAL ROLL

/// PRODUCT CODE	XL-3302
/// DIMENSIONS	76CM X 46M
/// CAPACITY	172.0 LITRES PER ROLL
/// PACK QUANTITY	1



## 15LTR EXCEL 'CLIP-TOP BAG' CHEMICAL SPILL KIT

/// PRODUCT CODE	XL-6015
/// CONTENTS	5X ELITE '300 SERIES' PADS 12X ELITE '200 SERIES' PADS 1X ELITE 1.2M SOCK 1X WASTE BAG C/W CABLE TIE
/// PACK QUANTITY	1

ADDITIONAL SPILL KITS ARE ALSO AVAILABLE IN THE FOLLOWING CAPACITIES:  
20, 25, 40, 80, 360, 500, 750, 1000 LITRES



## 30LTR EXCEL 'CLIP-TOP BAG' CHEMICAL SPILL KIT

/// PRODUCT CODE	XL-6030
/// CONTENTS	8X ELITE '300 SERIES' PADS 18X ELITE '200 SERIES' PADS 3X ELITE 1.2M SOCKS 3X WASTE BAG C/W CABLE TIE
/// PACK QUANTITY	1

ADDITIONAL SPILL KITS ARE ALSO AVAILABLE IN THE FOLLOWING CAPACITIES:  
20, 25, 40, 80, 360, 500, 750, 1000 LITRES



## ELITE

SINGLE SIDED COVERSTOCK RANGE

- INCREASED TENSILE STRENGTH
- LOW LINT
- WORKSHOP FRIENDLY
- IDEAL FOR WALKWAY COVERAGE

### ELITE '300 SERIES'

SINGLE-SIDED CHEMICAL PADS

/// PRODUCT CODE	EL-3300
/// DIMENSIONS	40CM X 50CM
/// CAPACITY	1.0 LITRES PER PAD
/// PACK QUANTITY	100



### ELITE '200 SERIES'

SINGLE-SIDED CHEMICAL PADS

/// PRODUCT CODE	EL-3200
/// DIMENSIONS	40CM X 50CM
/// CAPACITY	0.5 LITRES PER PAD
/// PACK QUANTITY	200



### ELITE '300 SERIES'

SINGLE-SIDED CHEMICAL ROLL

/// PRODUCT CODE	EL-3301
/// DIMENSIONS	50CM X 40M
/// CAPACITY	100 LITRES PER ROLL
/// PACK QUANTITY	1





## ELITE '300 SERIES'

SINGLE-SIDED CHEMICAL ROLL

/// PRODUCT CODE	EL-3302
/// DIMENSIONS	90CM X 40M
/// CAPACITY	180.0 LITRES PER ROLL
/// PACK QUANTITY	1

## ELITE CHEMICAL SOCK

/// PRODUCT CODE	EL-3000
/// DIMENSIONS	1.2M X 7.0CM
/// CAPACITY	4.0 LITRES PER SOCK
/// PACK QUANTITY	20



## ELITE CHEMICAL SOCK

/// PRODUCT CODE	EL-3001
/// DIMENSIONS	3.0M X 7.0CM
/// CAPACITY	10.0 LITRES PER SOCK
/// PACK QUANTITY	8

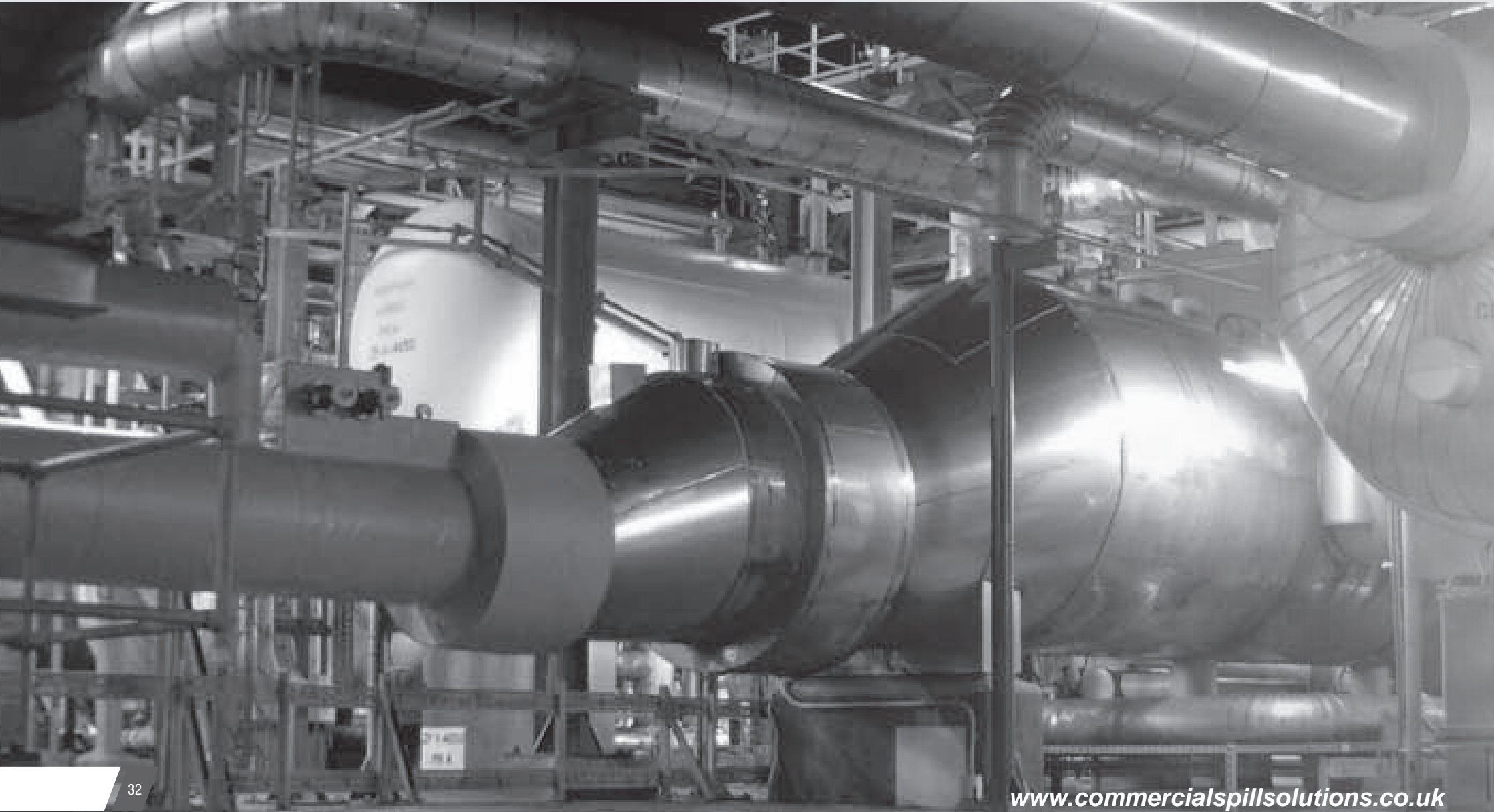




# **ELITE-GRANDE**

DOUBLE SIDED COVERSTOCK RANGE

- **MAXIMUM STRENGTH**
- **LINT FREE**
- **SOFTER FOR DELICATE APPLICATIONS**
- **IMPROVED FLUID RETENTION**







## 50LTR ELITE-GRANDE 'SHOULDER BAG'

CHEMICAL SPILL KIT

/// PRODUCT CODE	ELG-6050
/// CONTENTS	15X ELITE-GRANDE '300 SERIES' PADS 30X ELITE-GRANDE '200 SERIES' PADS 4X ELITE 1.2M SOCKS 4X EXCEL CUSHIONS 4X WASTE BAG C/W CABLE TIE
/// PACK QUANTITY	1

ADDITIONAL SPILL KITS ARE ALSO AVAILABLE IN THE FOLLOWING CAPACITIES:  
20, 25, 40, 80, 360, 500, 750, 1000 LITRES

## 120 & 240LTR ELITE-GRANDE 'WHEELED BIN'

CHEMICAL SPILL KIT



/// PRODUCT CODE	ELG-6120 (120LTR BIN)	ELG-6240 (240LTR BIN)
/// CONTENTS	25X ELITE-GRANDE '300 SERIES' PADS 50X ELITE-GRANDE '200 SERIES' PADS 8X ELITE 1.2M SOCKS 5X EXCEL CUSHIONS 1X 0.5KG LEAK BLOCK GRANULES 8X WASTE BAG C/W CABLE TIE	50X ELITE-GRANDE '300 SERIES' PADS 1000X ELITE-GRANDE '200 SERIES' PADS 16X ELITE 1.2M SOCKS 10X EXCEL CUSHIONS 2X 0.5KG LEAK BLOCK GRANULES 16X WASTE BAG C/W CABLE TIE
/// PACK QUANTITY	1	1

ADDITIONAL SPILL KITS ARE ALSO AVAILABLE IN THE FOLLOWING CAPACITIES:  
20, 25, 40, 80, 360, 500, 750, 1000 LITRES

## **DACOMA SPILLEXCEL** **DRAIN PROTECTION**

*Dacoma SpillExcel offers a concise selection of drain protection products satisfying the requirements of most industrial site applications. The range includes 'once-only' Bentonite clay and reusable Neoprene or Polyurethane drain covers.*

**CLASSIC**

**EXCEL**

**ELITE**

# DRAIN PROTECTION

## CLASSIC LEAK BLOCK DRAIN RUG

## CLASSIC

/// PRODUCT CODE	CL-8000	CL-8001
/// DIMENSIONS	45CM X 45CM	45CM X 65CM
/// PACK QUANTITY	2	2



## EXCEL NEOPRENE DRAIN PROTECTION KIT

## EXCEL

/// PRODUCT CODE	XL-8000
/// DIMENSIONS	90CM X 90CM
/// CONTENTS	1X 90CM X 90CM NEOPRENE DRAIN MAT 2X 0.5KG LEAK BLOCK GRANULES
/// PACK QUANTITY	1



## ELITE POLYURETHANE DRAIN MAT

## ELITE POLYURETHANE DRAIN MAT

COMPLETE WITH CARRY HOLDALL

## ELITE



/// PRODUCT CODE	EL-8000	EL-8001
/// DIMENSIONS	61CM X 61CM	91CM X 91CM
/// PACK QUANTITY	1	1

/// PRODUCT CODE	EL-8002	EL-8003
/// DIMENSIONS	61CM X 61CM	91CM X 91CM
/// PACK QUANTITY	1	1

## DACOMA SPILLEXCEL SPILL CONTAINMENT

*All sites storing 200 litres or more of oil or fuel above ground in one or more containers require some form of Spill Containment.*

*In England & Wales the regulations only apply to outdoor storage, whilst in Scotland the regulations apply indoor and outdoor.*

*Dacoma SpillExcel offers a comprehensive range of fluid bunds constructed using industrial grade polyethylene, designed for the safe storage of fluid containers, including; IBC's and drums in a range of sizes from 5 to 205 litres.*

## ENDURO

### STORAGE REGULATIONS:

*All containers storing oil or fuel, whether a drum, an IBC or a tank, must be sufficiently banded within themselves or stood on a spill pallet or drip tray that provides sufficient containment. The bund must have sufficient capacity to: Contain 110% of the contents of the largest container: or 25% of the total capacity stored, whichever is the greater. In the case of single drums, a drip tray with a capacity of 25% of the contents is normally acceptable, apart from drums sited in high-risk areas.*

## ENDURO

IBC STORAGE SYSTEMS

- DESIGNED FOR INDUSTRIAL USE
- MADE FROM RECYCLABLE POLYETHYLENE
- REGULATION COMPLIANT
- 'SAFETY FIRST' DESIGNS



### ENDURO SINGLE IBC POLYETHYLENE SPILL PALLET

/// PRODUCT CODE	EN-7000
/// DIMENSIONS	1450 X 1450 X 1000MM
/// CAPACITY	1100 LITRES
/// SWL*	2000 KG
/// PACK QUANTITY	1

\* SAFE WORKING LOAD



### ENDURO SINGLE IBC POLYETHYLENE SPILL PALLET C/W INTEGRATED DISPENSING WELL

/// PRODUCT CODE	EN-7001
/// DIMENSIONS	2000 X 1490 X 765MM
/// CAPACITY	1100 LITRES
/// SWL*	2000 KG
/// PACK QUANTITY	1

\* SAFE WORKING LOAD



### ENDURO DOUBLE IBC POLYETHYLENE SPILL PALLET

/// PRODUCT CODE	EN-7002
/// DIMENSIONS	2450 X 1450 X 575MM
/// CAPACITY	1100 LITRES
/// SWL*	4000 KG
/// PACK QUANTITY	1

\* SAFE WORKING LOAD



## ENDURO

DRUM STORAGE SOLUTIONS

- DURABLE CONSTRUCTION
- MADE FROM RECYCLABLE POLYETHYLENE
- INNOVATIVE DESIGN
- REGULATION COMPLIANT



### ENDURO 2-DRUM POLYETHYLENE SPILL PALLET

/// PRODUCT CODE	EN-7022
/// DIMENSIONS	1300 X 750 X 440MM
/// CAPACITY	250 LITRES
/// SWL*	1350 KG
/// PACK QUANTITY	1

\* SAFE WORKING LOAD



### ENDURO POLYETHYLENE DRUM TRAY

/// PRODUCT CODE	EN-7030
/// DIMENSIONS	870DIA X 190MM
/// CAPACITY	50 LITRES
/// PACK QUANTITY	1



### ENDURO 4-DRUM POLYETHYLENE SPILL PALLET

/// PRODUCT CODE	EN-7023
/// DIMENSIONS	1380 X 1290 X 280MM
/// CAPACITY	250 LITRES
/// SWL*	2700 KG
/// PACK QUANTITY	1

\* SAFE WORKING LOAD



## ENDURO 2-DRUM POLYETHYLENE WORKFLOOR

/// PRODUCT CODE	EN-7022
/// DIMENSIONS	1600 X 800 X 150MM
/// CAPACITY	120 LITRES
/// SWL*	1350 KG
/// PACK QUANTITY	1

\* SAFE WORKING LOAD



## ENDURO POLYETHYLENE WORKFLOOR RAMP

/// PRODUCT CODE	EN-7033
/// DIMENSIONS	1290 X 810 X 180MM
/// SWL*	300 KG
/// PACK QUANTITY	1

\* SAFE WORKING LOAD



## ENDURO 4-DRUM POLYETHYLENE WORKFLOOR

/// PRODUCT CODE	EN-7032
/// DIMENSIONS	1600 X 1600 X 150MM
/// CAPACITY	240 LITRES
/// SWL*	2700 KG
/// PACK QUANTITY	1

\* SAFE WORKING LOAD



## ENDURO

SPILL TRAY RANGE

- MODULAR SYSTEM
- REGULATION COMPLIANT
- MADE OF RECYCLABLE POLYETHYLENE
- MANY APPLICATIONS

### ENDURO 1 X 25LTR DRUM TRAY



/// PRODUCT CODE	EN-7040
/// DIMENSIONS	600 X 400 X 155MM
/// CAPACITY	20 LITRES
/// PACK QUANTITY	1

### ENDURO 1 X 25LTR DRUM TRAY C/W GRATE

/// PRODUCT CODE	EN-7041
/// DIMENSIONS	600 X 400 X 155MM
/// CAPACITY	20 LITRES
/// SWL*	50 KG
/// PACK QUANTITY	1

\* SAFE WORKING LOAD



### ENDURO 2 X 25LTR DRUM TRAY



/// PRODUCT CODE	EN-7042
/// DIMENSIONS	800 X 400 X 155MM
/// CAPACITY	30 LITRES
/// PACK QUANTITY	1



## ENDURO 2 X 25LTR DRUM TRAY C/W GRATE

/// PRODUCT CODE	EN-7043
/// DIMENSIONS	800 X 400 X 155MM
/// CAPACITY	30 LITRES
/// SWL*	50 KG
/// PACK QUANTITY	1

\* SAFE WORKING LOAD

## ENDURO 4 X 25LTR DRUM TRAY



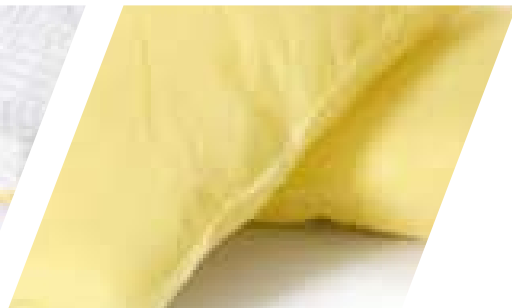
/// PRODUCT CODE	EN-7044
/// DIMENSIONS	1000 X 600 X 155MM
/// CAPACITY	60 LITRES
/// PACK QUANTITY	1

## ENDURO 4 X 25LTR DRUM TRAY C/W GRATE

/// PRODUCT CODE	EN-7045
/// DIMENSIONS	1000 X 600 X 155MM
/// CAPACITY	60 LITRES
/// SWL*	110 KG
/// PACK QUANTITY	1

\* SAFE WORKING LOAD





***DACOMA SPILLEXCEL***  
**Commercial Fuel Solutions Ltd**

Unit 6 City West  
Millbrook Road East  
Southampton SO15 1AH

Tel: 0845 688 9755

Fax: 0845 688 9744

[sales@commercialfuelsolutions.com](mailto:sales@commercialfuelsolutions.com)