



**PROTECTION
SOLUTIONS**
FOR HOTELS

HOTELS REFERENCES WORLDWIDE



WORLDWIDE REFERENCES



FAIRMONT LA MARINA HOTEL



Salé, Morocco
2018

9.000 m²

Sopralène® Flam Jardin, Elastophène® Flam 180-25, Elastophène® Flam 25 bituminous waterproofing system.
Rooflex V 150 geotextile and **XPS SL** thermal insulation.



ROYAL ATLANTIS RESORT HOTEL

 Dubai, United Arab Emirates

250.000 m²

Colphène® BSW H, Colphène® BSW V, Colphène® BSW Protect'R, tanking works bituminous waterproofing systems.

Sopraboard, protection panels.

Alsan® Flashing liquid waterproofing system for details.

WORLDWIDE REFERENCES



ESMERALDA PRAIA HOTEL

 Natal, Brazil
2015

Flagpool NG, synthetic waterproofing system for swimming pool.

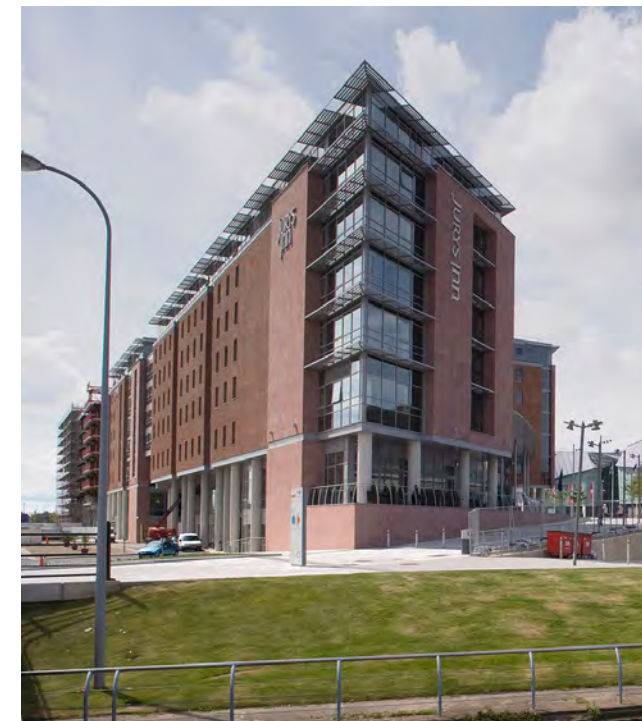


ZINA BEACH RESORT HOTEL & SPA

 Mostaganem, Algeria
2019

1200 m²

Aquadère[®], Sopralène[®] Flam 180, Sopralène[®] Flam 180 ARC, bituminous waterproofing system.



KINGS WATERFONT HOTEL

 Liverpool, England

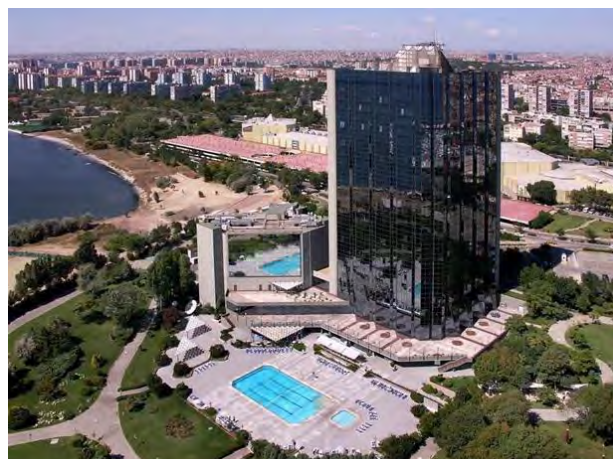
20.000 m²

Flagon[®] SR PVC membrane waterproofing layer.

WORLDWIDE REFERENCES



6



SHERATON HOTEL

 Istanbul, Turkey

500 m²

Flagon® AT, watertank PVC synthetic waterproofing systems.

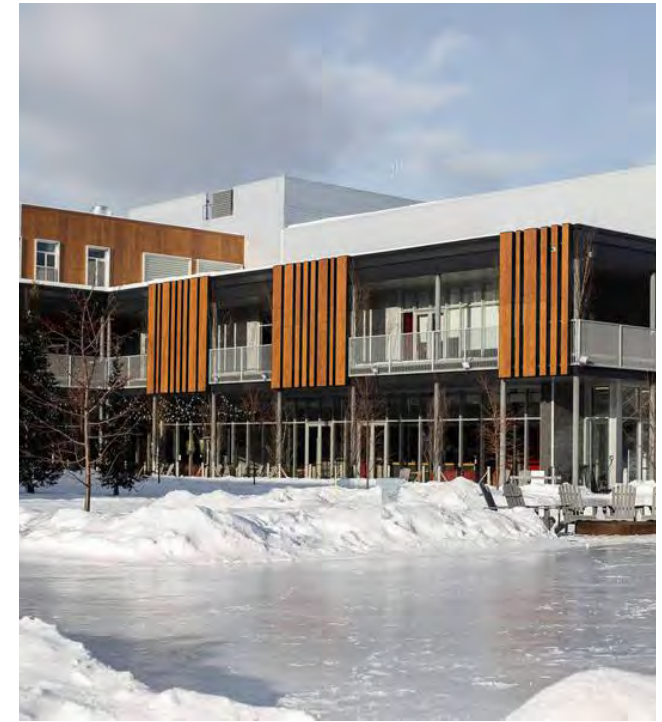


HOTEL RITZ

 Madrid, Spain
2018

2.000 m²

Inverted waterproofing system under gravel ballast with XPS thermal insulation.



LE GERMAIN HOTEL AND SPA

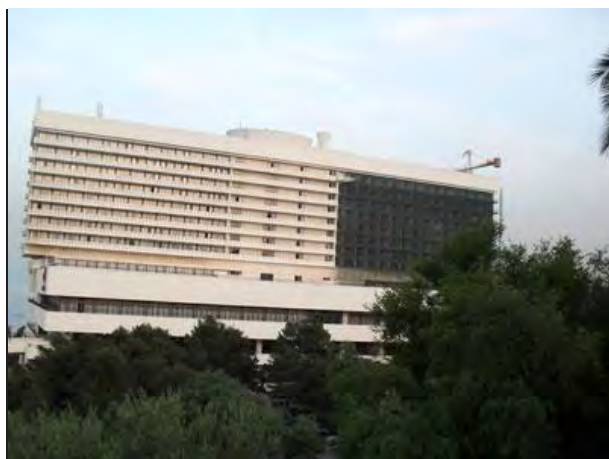
 Charlevoix, Canada

Soprasedal XPRESS G , air and vapour barrier membrane for walls.

WORLDWIDE REFERENCES



8



EL AURASSI HOTEL

 Alger, Algeria
2011

17.000 m²

Sopravoile, Elastophène® Flam 25, Elastophène® Flam 180-25, bituminous waterproofing system.

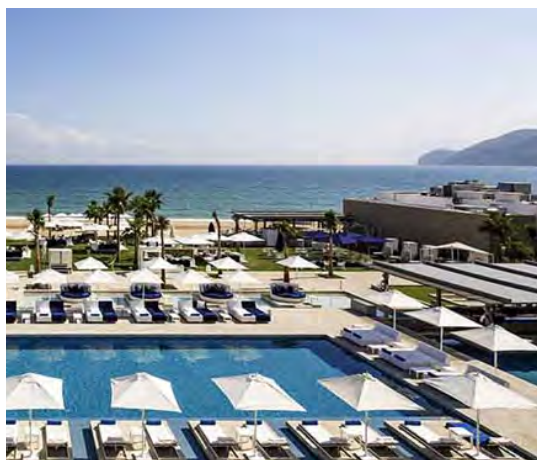


SOFITEL TAMUDA BAY BEACH HOTEL & SPA

 M'Diq, Tangier, Morocco
2016

100 ml

Bande LM, Soprajoint® Expansion joint bituminous waterproofing system.



AL RAHA BEACH HOTEL

 Abu Dhabi, United Arab Emirates
2012

60 Exubaies

Leaf ventilator for façade natural smoke extraction.

WORLDWIDE REFERENCES



IBIS AND NOVOTEL DAKAR HOTELS

 Dakar, Senegal
2018

2.300 m²

Aquadère®, **Efigreen® Alu+**, **Soprastick® SI**, **Sopralène® Flam 180 AR**, thermal insulation and bituminous waterproofing system.
Alsan® Flashing liquid waterproofing system for upstands and details.



HARD ROCK HOTEL, UNIVERSAL STUDIO


 Orlando, Florida, United States of America
2000

21.300 m²

Insulation, Sopralène® Flam 180 Sanded, Sopralène® 250 FR GR, thermal insulation and bituminous waterproofing system.



HILTON HOTEL

 Bursa, Turkey

12.000 m²

Sopralène® S Flam 180-40, bituminous waterproofing systems for foundations.

9.000 m²

Sopralène® Flam Jardin, bituminous waterproofing systems for green roof.

WORLDWIDE REFERENCES



CARESSE HOTEL

 Mugla, Turkey
2014

2.500 m²

Velaphone® Fibre 22 soundproofing system for floors.



RADISSON BLU HOTEL KAYSERI

 Kayseri, Turkey
2012

7.000 m²

Sopralène® S Flam 180-40, bituminous waterproofing systems for foundation walls

7.000 m²

Sopralène® Flam 180, bituminous waterproofing systems for terraces.



ROSAMAR HOTEL

 St Antoni Calonge, Spain
2019

2.000 m²

Tecsound® soundproofing system for buildings.



STRELYSIA HOTEL

 Casablanca, Morocco
2017

3.500 m²

Elastophène® Flam 180-25, **Elastophène**® Flam 25,
Vélaphone® Fibre 22, bituminous waterproofing and soundproofing system.

600 m²

Alsan® 310 liquid waterproofing system.

WORLDWIDE REFERENCES



HOLIDAY INN HOTEL

 Kandoomaafushi Island, Maldives

160 m²

Flagpool® NG, synthetic waterproofing system for swimming pool.



MARINA BAY SAND HOTEL

 Singapore, Singapore

12.000 m²

Colphène® self-adhesive, bituminous waterproofing system.

20.000 m²

Tecsound®, soundproofing insulation.

WORLDWIDE REFERENCES



HOLIDAY INN EXPRESS HOTEL

 Medina, Ohio, United States of America
2000

Sopraseal® Stick VP, self-adhered vapor-permeable air barrier membrane.
Sopraseal® Stick 1100T was installed as a transition flashing membrane at doors, windows and penetrations.

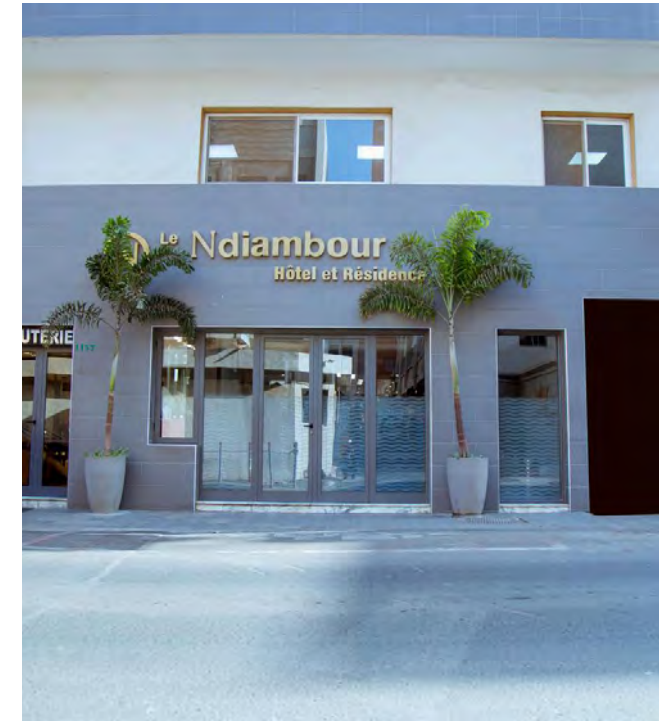


CORPERA HOTEL

 Istanbul, Turkey
2015

20.000 m²

Stickson® soundproofing system for buildings.



NDIAMBOUR HOTEL

 Dakar, Senegal
2018

300 m²

Aquadère®, Elastophène® Flam 180-25, Elastophène® Flam 25
bituminous waterproofing system.

**WORLDWIDE
REFERENCES**



MAJESTIC HOTEL

 Hô Chi Minh city, Vietnam

Mammouth® membrane, bitumious waterproofing system.



DANAIDE RESORT HOTEL

 Scanzano Jonico, Italy

4.000 m²

Flagpool® NG, synthetic waterproofing system for swimming pool.



FOUR SEASON HOTEL

 Bangkok, Thailand
2019

14.000 m²

Flagon® TPO, synthetic waterproofing system.

**WORLDWIDE
REFERENCES**



ONOMO HOTEL

 Conakry, Guinea Conakry
2016

2.650 m²

Aquadère[®], Efigreen[®] Duo+, Sopravoile 100, Elastophène[®] Flam 25, Sopralène[®] Flam jardin CAP, thermal insulation and bitumious waterproofing system for green roofs.

Aquadère[®], Efigreen[®] Alu+, Soprastick[®] Si, Sopralène[®] Flam 180 AR, thermal insulation and bitumious waterproofing system.

300 m²

Alsan[®] 400, liquid waterproofing system.



SHERATON HOTEL

 Annaba, Algeria
2018

12.000 m²

Aquadère®, **Elastophène® 25**, insulation, **Elastophène® Flam 180-25**, **Protecdrain**, bituminous waterproofing system.



LEAMY LAKE HOTEL

 Gatineau, Canada

7.400 m²

Elastophène® 180 PS, **Sopralène® Flam 250 GR**, bituminous waterproofing system.

20.800 m²

Antirock® P, bituminous waterproofing system for car park.

WORLDWIDE REFERENCES



PHENIX HOTEL

 Somone, Senegal
2018

530 m²

Sopracolle 300 N, Elastophène® Flam S180-25, Elastophène® Flam 25, XPS SL 40, thermal insulation and bitumious waterproofing system.



FEHIM AND HATICE SULTAN LUXURY HOTEL

 Istanbul, Turkey
2019

1.800 m²

New guest rooms

Tecsound® 100 soundproofing insulation.



THE KURHAUS HOTEL

 Scheveningen, Netherlands

3.000 m²

Flagon® SR Copper Art®, synthetic and aesthetic waterproofing system.

WORLDWIDE REFERENCES



HEART OF EUROPE RESORT HOTEL

 Dubai, United Arab Emirates

50.000 m²

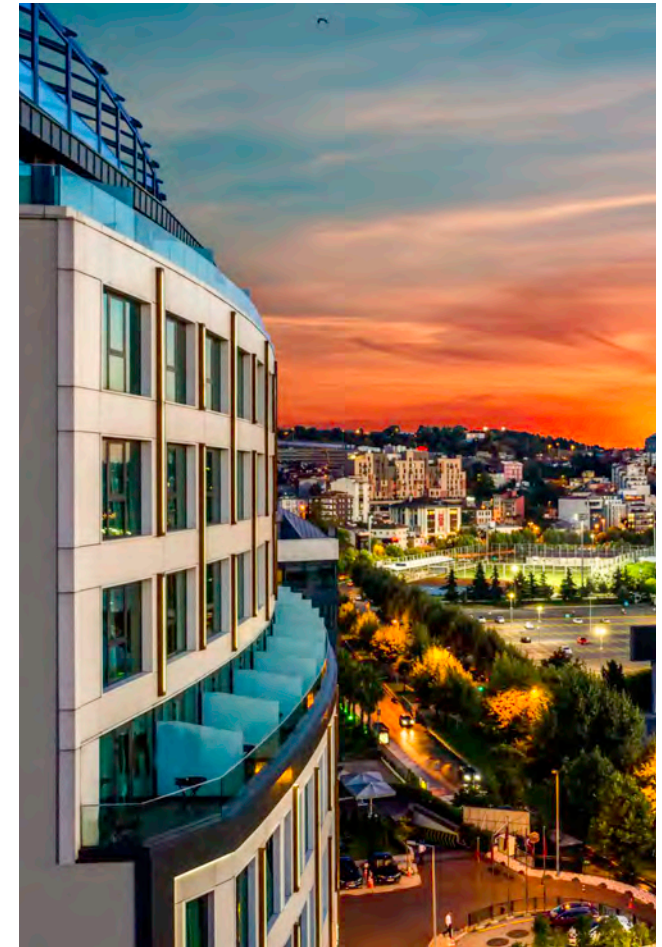
Colphène® BSW, tanking works bituminous waterproofing systems.



IMPERIAL HOTEL, TARRACO

 Tarragona, Spain
2019

1.200 m²
Texxam 1500 geotextile.



CLARION HOTEL GOLDEN HORN

 Istanbul, Turkey
2015

3.000 m²
Stickson® soundproofing system.

WORLDWIDE REFERENCES



ROYAL PALM HOTEL

 Marrakech, Morocco
2015

13.000 m²

Elastophène® Flam 180-25, Elastophène® Flam 25,
XPS, thermal insulation and bituminous waterproofing system.



WYNDHAM GRAND KALAMIS HOTEL

 Istanbul, Turkey
2011

13.000 m²

Sopralène® Flam 180, bituminous waterproofing system for terraces.

13.000 m²

Sopralène® Flam S 180-40, bituminous waterproofing system for foundation walls.



RIU PLAZA HOTEL



Sopraiso tapered, thermal insulation.

Sopraboard, **Sopralène® Flam 180 GR**, bitumious waterproofing system.

Alsan® Flashing, liquid waterproofing system for upstands and details.



FORES DE LA PLAYA HOTEL



Elastophène® SP 3.0, **Sopralène® 180 PS 3.0**,
Sopralène® Flam 180 FR GR, **Colply® EF Ribbon**, bitumious
waterproofing system.



WORLDWIDE REFERENCES



HYATT REGENCY AIRPORT HOTEL



Alger, Algeria
2019

30.000 m²

Aquadère®, **Sopralène® S Flam 180 - 40**, **Sopralène® Flam Jardin cap**, tanking and buried walls waterproofing systems.
Aquadère®, **Sopralène® Flam 180**, **Sopralène® Flam 180 AR**, bituminous waterproofing system.



PESTANA CR7 HOTEL

 Marrakech, Morocco
2019

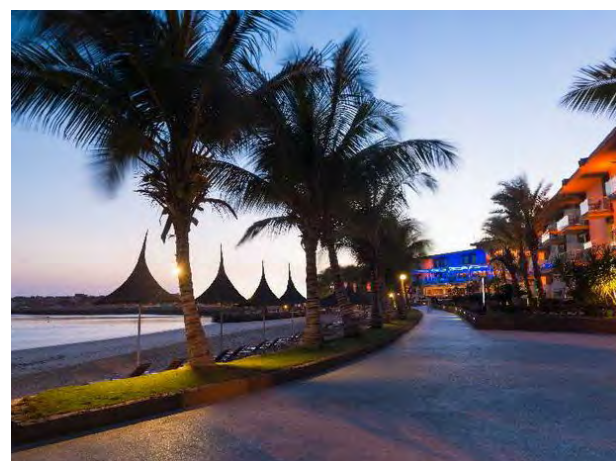
10.000 m²

Emufal Solid, Elastophene® 25, Efigreen® Duo+, Sopravoile 100, Elastophene® Flam 180-25 and Elastophene® Flam 25, Rooftex V, bituminous waterproofing system.

Emufal Solid, Sopralene® Flam Jardin Cap, Sopradrain® and Soprafiltr®, bituminous waterproofing system.

Emufal Solid, Elastophene® Flam S 70-25 and Elastophene® Flam 25 AR, bituminous waterproofing system.

WORLDWIDE REFERENCES



TERROU BI HOTEL

 Dakar, Senegal
2015

3.000 m²

Aquadère[®], Efigreen[®] Alu+, Soprastick[®] SI, Sopralène[®] Flam 180 AR, thermal insulation and bitumious waterproofing system.



AGARO HOTEL

 Chipiona, Spain
2017

3.000 m²

Inverted waterproofing system under gravel ballast with XPS thermal insulation.



ROCKS HOTEL

 Kyrenia, Cyprus
2017

6.000 m²

Colphène® BSW waterproofing system for foundations.

WORLDWIDE REFERENCES



SAADIYAT ISLAND RESORT HOTEL

 Dubai, United Arab Emirates
2015

100.000 m²

Colphène® BSW, tanking works bituminous waterproofing systems.

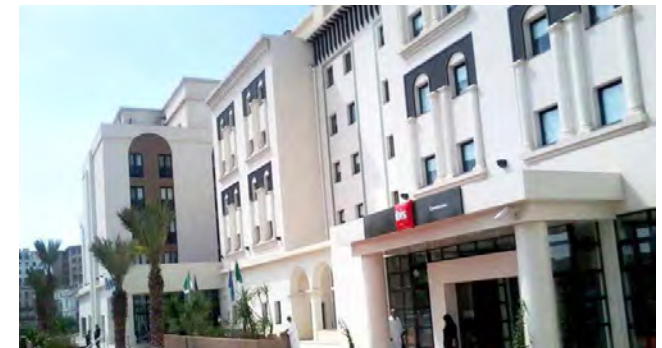


RAMADA HOTEL

 Yalova, Turkey

3.000 m²

Vinitex MP / Flagon[®] SR, PVC synthetic waterproofing system.



IBIS AND NOVOTEL HOTELS

 Constantine, Algeria
2010

4.000 m²

Aquadère[®], Elastophène[®] 25, insulation, Elastophène[®] Flam 180-25, Sopralène[®] Flam 180, bituminous waterproofing system.

WORLDWIDE
REFERENCES

— 34



PULLMAN HOTEL


 Dakar, Senegal
2016

900 m²

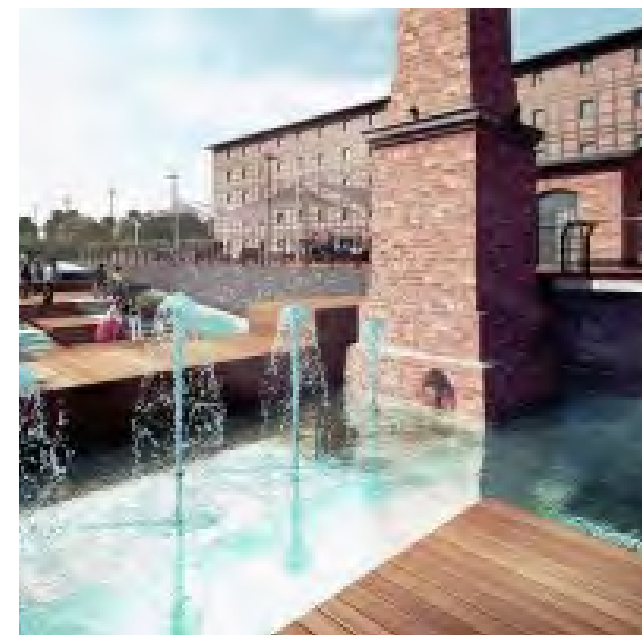
Aquadère[®], Efigreen[®] Duo+, Sopravoile 100, Elastophene[®] Flam 180-25, Elastophene[®] Flam25 waterproofing system.



PACIFIC CENTRE

 Panama city, Panama
2019

Sopracellulose AB, partition walls and ceiling insulation.



MLYNY ROTHERA HOTEL

 Bydgoszcz, Poland
2020

4.000 m²

Colphène® BSW H, waterproofing system for foundation and foundation walls.

WORLDWIDE REFERENCES



PARIS HOTEL & CASINO

 Las Vegas, Nevada, United States of America
1999

Elastophène® range, bituminus waterproofing system.



TANGER CITY CENTER

 Tanger, Morocco
2013-2016

15.000 m²

Elastophène® Flam 180-25, Elastophène® Flam 25, XPS, thermal insulation and bituminous waterproofing system.

500 m²

Elastophène® Flam 25, Sopralène® Flam Jardin Cap waterproofing system for planters and **Sopralène® Flam S 180-35, Sopralène® Flam Jardin Cap** for the upstands.



CAP NEGRET HOTEL

 Altea, Spain

7.000 m²

Tecsound® 70 soundproofing system.

WORLDWIDE REFERENCES



FOUR POINTS HOTEL-LES FALAISES ORAN

 Oran, Algeria
2014

8.000 m²
Aquadère[®], Elastohène[®] 25, insulation, Elastohène[®] Flam 25,
Elastophène[®] Flam 180-25,
Sopralène[®] Flam Jardin, bituminous waterproofing system.



HILTON GARDEN INN

 Dubai, United Arab Emirates

12.000 m²
Colphène[®] BSW, tanking works bituminous waterproofing systems.



KING FAHD PALACE HOTEL

 Dakar, Senegal
2016

6.000 m²
Aquadère®, Elastophène® Flam 25, Sopralène® Flan 180 AR, waterproofing system.



ROYAL MANSOUR HOTEL

 Casablanca, Morocco

8.800 m²
Flagon® BT and Vacuum, synthetic waterproofing system for tanking works.

WORLDWIDE REFERENCES



MARRIOTT HOTEL



Constantine, Algeria
2014

20.000 m²

Aquadère®, **Elastophène® 25**, insulation, **Elastophène® Flam 25**, **Elastophène® Flam 180-25**, bituminous waterproofing system.
Alsan® 310, liquid waterproofing system.



BANYAN TREE TAMOUDA BAY HOTEL

 Fnideq, Morocco
2016

400 m²

Sopravap® Stick Alu and **Sopravap® Stick Alu S16** bituminous vapor barrier.

2.500 m²

Alsan® 500 and **Alsan® 310** liquid waterproofing systems.

WORLDWIDE REFERENCES



MARRIOT HOTEL CAPPADOCIA

 Nevsehir, Turkey
2019

2.500 m²

Sopralène® Flam Antirock P waterproofing membrane for terraces.

1.750 m²

Elastocol® 500 primer, **Texself® AL 1,5 mm** waterproofing system for terraces.

3.400 m²

Soprafix® Unilay AR waterproofing system for roofs.



DOLLINGER HOTEL

 Bad Peterstal-Griesbach, Germany
2011

2.000 m²

AL V60S4, insulation, **Sopralène® Stick 30**, **Klewaplan AS 5**, bitumious waterproofing system.

Glacivap®, **Sopralène® Flam 30**, **Sopralène® Flam Jardin S5**, bitumious waterproofing system for green roof.



VICEROY HOTELS RESORTS

 The Palm, Jumeirah, Dubai , United Arab Emirates

70.000 m²

Colphène® BSW, waterproofing system for foundation and foundations walls..

**WORLDWIDE
REFERENCES**



MARRIOT HOTEL

■ ■ Lagos, Nigeria
2018

585 m²

Aquadère®, and two layers of **Elastophène® Flam 180-25** waterproofing membrane for ramps.

3.000 m²

Aquadère®, **Elastophène® 25**, **Efigreen® Duo+** insulation, **Sopravoile 100**, **Elastophène® Flam 180-25**, **Elastophène® 25** waterproofing system for terraces.

Aquadère®, **Elastophène® Flam 180-25**, **Elastophène® 25**, **XPS 500** insulation waterproofing system for terraces.

2.200 m²

Aquadère®, **Elastophène® Flam 180-25**, **Elastophène® 25** waterproofing system for terraces.



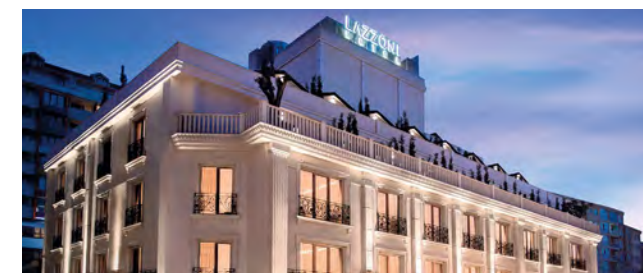


SHERATON HOTEL

 Bamako, Mali
2016

4.500 m²

Soprastick® SI, Elastophène® Flam 180-25 bitumious waterproofing system.



LAZZONI HOTEL

 Istanbul, Turkey
2019

313 m²

Tecsound® 50, Tecsound® 100 new guest rooms insulation.

WORLDWIDE
REFERENCES



RADISSON BLU HOTEL

 Abidjan, Ivory Coast
2015

13.100 m²

Elastophène® 25, Elastophène® Flam 180-25, Elastophène® 25 waterproofing system for terraces.

3.000 m²

Sopralène® S Flam 180-40 waterproofing system for terraces.

3.300 m²

Velaphone® Fibre 22 underfloor soundproofing.



FOUR SEASON RESORT BODRUM

 Mugla, Turkey
2018

50.000 m²

Colphène® BSW waterproofing system for foundations and foundation walls.



SANTO TOMAS HOTEL

 Es Migjorn, Minorca Island
2017

7000 m²

Flagon® SV, Texxam 1000 synthetic system for roof.



SOPREMA at your service

Looking for a sales contact in order to discuss a future project or a project that is under way? Any questions about the installation of our product range?

Contact SOPREMA Export department!

Tel.: **+33 (0)3 88 79 84 84**

Email: **export@soprema.com**

Find all the information on www.soprema.com

