

**SOPREMA**  
GROUP

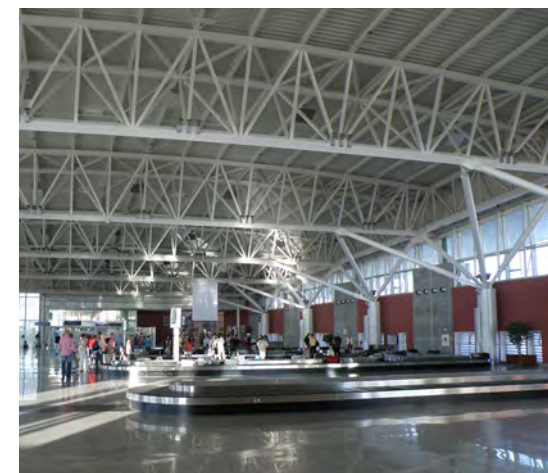


**PROTECTION  
SOLUTIONS**  
FOR AIRPORTS

# AIRPORTS REFERENCES WORLDWIDE



## WORLDWIDE REFERENCES



### OUJDA INTERNATIONAL AIRPORT

 Oujda, Morocco  
2008

**170 Certilux according to CE norm EN 12101-2 are directly integrated into the façade.**

The blades are in glass «green parsol» 64.2mm and equipped electrically 24V. Therefore, units can be controlled for smoke ventilation as well as for daily ventilation.



## CHARLES DE GAULLE AIRPORT

 Paris, France

**350 pcs Acoustic Certiciel** (concealed mechanism) were installed



## EUROAIRPORT BASEL MULHOUSE

 Mulhouse, France  
2013

**Mindful of its impact on the environment and energy bills, Basel-Mulhouse Airport was equipped with new continuous rooflights in 2013: the Bluevoûte PCA Fix.** These are ideal for bringing in overhead natural lighting, from which the airport now benefits.

**350 pcs Acoustic Certiciel** (concealed mechanism) were installed

## WORLDWIDE REFERENCES



### QUEEN ALIA INTERNATIONAL AIRPORT

 Amman, Jordan  
2009-2014

**Synthetic waterproofing system: 100.000 m<sup>2</sup>**

The waterproofing of the whole system on a total surface of about 70.000 m<sup>2</sup>, is guaranteed by the 1.8mm PVC membrane with glass fibre reinforcement **Flagon® SV**.



## MACEDONIA AIRPORT

 Thessaloniki, Greece  
2008

**Mechanical fixing system: 6.000 m<sup>2</sup>**

Waterproof synthetic membranes of the **Flagon® TPO** range are successfully employed in all sectors of roofing and civil engineering. The roofing business area uses membranes with inner reinforcement made of polyester mesh for mechanically fastened visible coverings and membranes with glass veil reinforcement for roofing with fixed or movable ballasting.



## BANGALORE INTERNATIONAL AIRPORT

 Bangalore, India  
2007

**Mechanical fixing system: 60.000 m<sup>2</sup>**

Waterproof synthetic membranes of the **Flagon® TPO** range are successfully employed in all sectors of roofing and civil engineering. The roofing business area uses membranes with inner reinforcement made of polyester mesh for mechanically fastened visible coverings and membranes with glass veil reinforcement for roofing with fixed or movable ballasting.

## WORLDWIDE REFERENCES



### BLAISE DIAGNE INTERNATIONAL AIRPORT

 Dakar, Senegal  
2016

**Self-protected non-accessible roof: 10.000 m<sup>2</sup>**

Solvent-free primer **Aquadère®** + **Sopracolle® 300 N** + **Efigreen® Alu+ 40 mm** + **Soprastick® SI** + **Elastophène® Flam 25 AR Grey**

High performance polyisocyanurate (PIR) thermal insulation is used to obtain 1.80 W/m<sup>2</sup>.°C with only 40mm thickness to reduce transport costs. Bitumen waterproofing system is used for making installation fast, easy, and reliable and composed with 1<sup>st</sup> self-adhesive membrane and a 2<sup>nd</sup> self-protected membrane covered with coloured slate chippings. The great advantage of bituminous coverings is that they can be regenerated with adding new membranes of the same nature reducing the costs of demolition and waste disposal, over time.



## NEW ANTALYA AIRPORT

 Antalya, Turkey  
2014

**Bituminous waterproofing system: 45.000 m<sup>2</sup>**  
**APP mineral 4.2 mm bitumen material - white surface.**



## AIRBUS

 Hamburg, Germany  
2004

**Bituminous waterproofing system: 28.000 m<sup>2</sup>**  
**APP mineral 4.2 mm bitumen material - white surface.**

## WORLDWIDE REFERENCES



### TERMINAL CENTER KINGSTON



Kingston, Jamaica  
2007

**Bituminous waterproofing system: 12.000 m<sup>2</sup> Elastocol® 500 TP + Antirock® P** under hot rolled asphalt to resist to high bus traffic, thanks to **Antirock®** products designed for roads and bridges with very high characteristics such as concrete adhesion as example.

**Alsan® Flashing**, ready-to-use waterproofing bitumen-polyurethane resin used for upstands and details.

**Alsan® 400** is a single-component, ready-to-use watertight polyurethane resin used to waterproof all stairways of the building.

**Sopralène® Flam Stick + Sopralène® Flam 180 AR** are used as waterproofing system for making installation fast, easy, and reliable and composed with 1<sup>st</sup> self-adhesive membrane and a 2<sup>nd</sup> self-protected membrane covered with coloured slate chippings.





## AL MASSIRA INTERNATIONAL AIRPORT

 Agadir, Morocco  
2015-2016

**Accessible roof under protection: 4.000 m<sup>2</sup>**  
**Soprakote® + Elastophène® 25 + Sopracolle® 300 N + Efigreen® Duo+ 40 mm + Sopravoile® 100 + Elastophène® Flam 180-25 + Elastophène® Flam 25 + protection «slab»**

The chosen built-up roofing system includes the best thermal insulation because of the ratio between thickness and thermal resistance. Due to the thermal conductivity of Efigreen® Duo (being of 0.022 W/mK) and a thickness of 40 mm, we obtain a thermal resistance of 1.80 W/m<sup>2</sup>K. This can reduce thicknesses and the weight on roofs, and allows to save on transportation fees. The good compressive strength (class C) allows this insulation a great waterproofing support for, non-accessible, technical or pedestrian access roofs and green roofs.



## MOHAMMED V AIRPORT

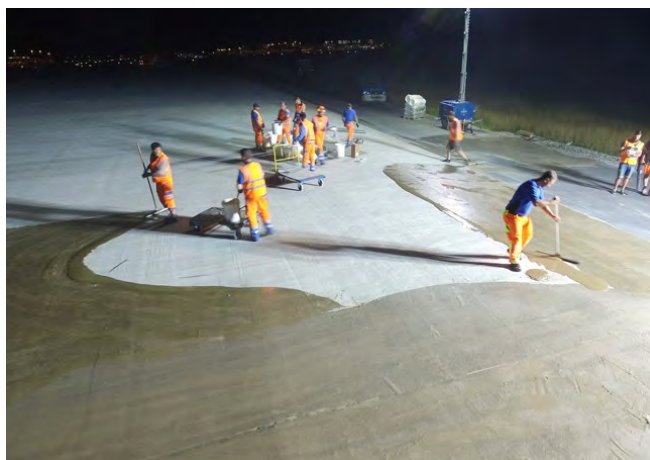
 Casablanca, Morocco  
2016

**Bituminous waterproofing system: 20.900 m<sup>2</sup>**  
**Bitumen surfaced mineral wool + Elastophène® Flam 25 + Elastophène® Flam 25 AR**


This SBS multi layered waterproofing system is self-protected with colored slate chippings that protects the membrane from UV rays and external aggressions. The waterproofing is adhered and fully welded on the bitumen-surfaced insulation.

The SBS membrane allows an excellent flexibility and a good aging and heat resistance. Its elasticity is resistant to extreme deformations (memory effect) and is sufficiently adapted to movements of the flexible support such as the steel deck of the airport.

## WORLDWIDE REFERENCES

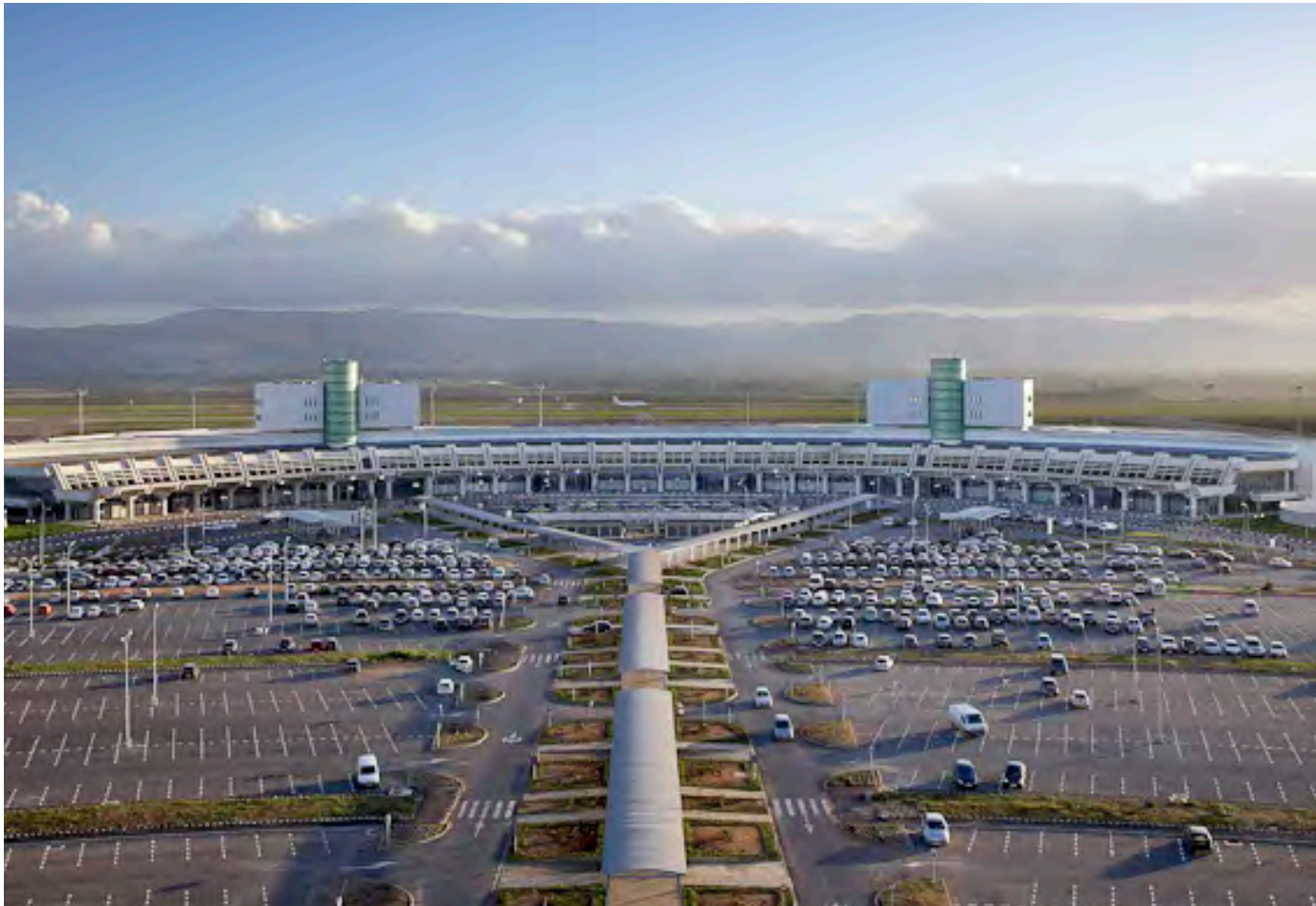


### INTERNATIONAL AIRPORT OF ZURICH

 Zurich, Switzerland  
2016

**Liquid waterproofing system: 11.000 m<sup>2</sup>**  
**Alsan® Reku P 70 + Alsan® 870 RS + Alsan® 970 F**

The products of the **Alsan®** range were the most suitable for this purpose, firstly because of their ease of implementation and secondly because it dry very quickly and thus contributed to reducing the time of construction.



## BAMAKO SENOU INTERNATIONAL AIRPORT

 Bamako, Mali  
2011

**Waterproofing system under protection: 12.000 m<sup>2</sup>**  
Solvent-free primer **Aquadère® + Elastophène® 25 + Sopracolle® 300 N + Efigreen® Duo 40 mm or 70 mm + Tapered IR + Styrbase® Stick + Sopralène® Flam 180 AR + Protecdrain® Filtre + concrete pavers**

High performance polyisocyanurate (PIR) thermal insulation is used to reduce transport costs. Tapered insulation was used to make slope on the steel deck.

Bitumen waterproofing system is used for making installation fast, easy, and reliable and composed with 1st self-adhesive overlaps membrane and a 2nd self-protected membrane covered with coloured slate chippings, we used a drainage PEHD sheet under concrete pavers for a technical access roof.



## ALGER INTERNATIONAL AIRPORT

 Alger, Algeria  
2000-2001

**Self-protected technical roof: 35.000 m<sup>2</sup>**  
Solvent-free primer **Aquadère® + Sopracolle® 300 N + PSE (EPS) 40 mm + Soprastick® + Sopralène® Flam 180 AR**

## WORLDWIDE REFERENCES

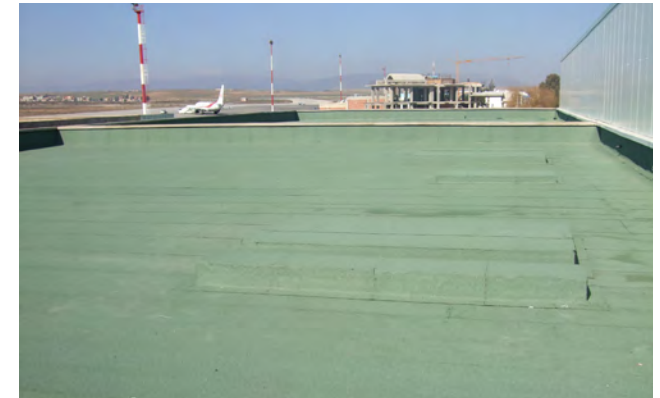


### ORAN INTERNATIONAL AIRPORT

 Oran, Algeria  
2005-2006

**Rehabilitation of terraces: 6.000 m<sup>2</sup>**

Solvent-free primer **Aquadère®** + **Elastophène® 25** + **Soprastick®** + **Sopralène® Flam 180 AR**



## CONSTANTINE AIRPORT

 Constantine, Algeria  
2007

**Waterproofing system: 6.000 m<sup>2</sup>**  
Solvent-free primer **Aquadère® + Elastophène® 25 +**  
**Soprastick® + Sopralène® Flam 180 AR**



## NEW TERMINAL OF ORAN

 Oran, Algeria  
2017

**Waterproofing system: 18.000 m<sup>2</sup>**  
Solvent-free primer **Aquadère® + Sopralène® S Flam 180-40** (two layers)

## WORLDWIDE REFERENCES



### MOHAMMED V INTERNATIONAL AIRPORT

 Casablanca, Morocco  
2016

**Bituminous waterproofing system: 20.900 m<sup>2</sup>**

Bitumen surfaced mineral wool + **Elastophène® Flam 25** + **Elastophène® Flam 25 AR**

This SBS multi layered waterproofing system is self-protected with colored slate chippings that protects the membrane from UV rays and external aggressions. The waterproofing is adhered and fully welded on the bitumen-surfaced insulation.



## ERBIL INTERNATIONAL AIRPORT

 Erbil, Irak  
 2018

**Buried walls and synthetic roofing: 35.000 m<sup>2</sup>**

**15.000 m<sup>2</sup> of Colphène® 1500** self-adhesive flexible SBS elastomeric bitumen waterproofing membrane with anti-root properties and flame-free application.

**20 000 m<sup>2</sup> of Flagon® EP/PR Energy Plus** special synthetic Cool Roofing membrane white upper surface (addition of titanium) highly reflective and extremely resistant to aging, UV rays and chemical agents.



## SAINT PIERRE AND MIQUELON OLD AIRPORT

 Saint Pierre and Miquelon,  
2019

**Waterproofing system mechanically fastened: 800 m<sup>2</sup>**

**Soprafix® HP + Sopralène® Flam 180 ARD grey**

Renovation of the existing roofing system on wood substrate.

## WORLDWIDE REFERENCES



### GUARULHOS AIRPORT

 Sao Paulo, Brazil  
2013

**229 Certilight vents were installed on the glass roof of this international airport at Sao Paulo.** These daily air and smoke vents comprise two leaves for letting smoke and heat out whilst remaining discreet in design and look, fitting perfectly into the environment of this airport covering more than 1400 hectares.

Watertank works were also made for terminal T3 with **Alsan® Flashing** liquid system and **Flagon® AT** synthetic waterproofing.





## CHANGI AIRPORT

 Singapore, Singapore  
2017

**97 pcs Exubaie** with themally broken profile and double glazed laminated both side.

**Bituminous waterproofing system: 88,000 m<sup>2</sup>**

**Colphene (1.5mm)** self-adhesive flexible SBS elastomeric bitumen waterproofing membrane.



## ARTES BRUGGE CRUISES TOWER

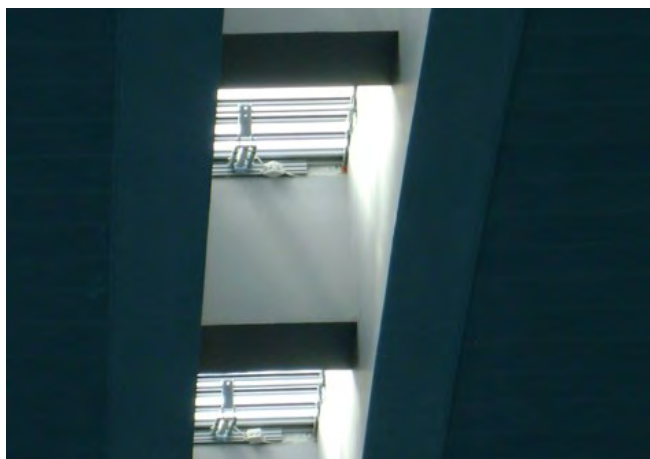
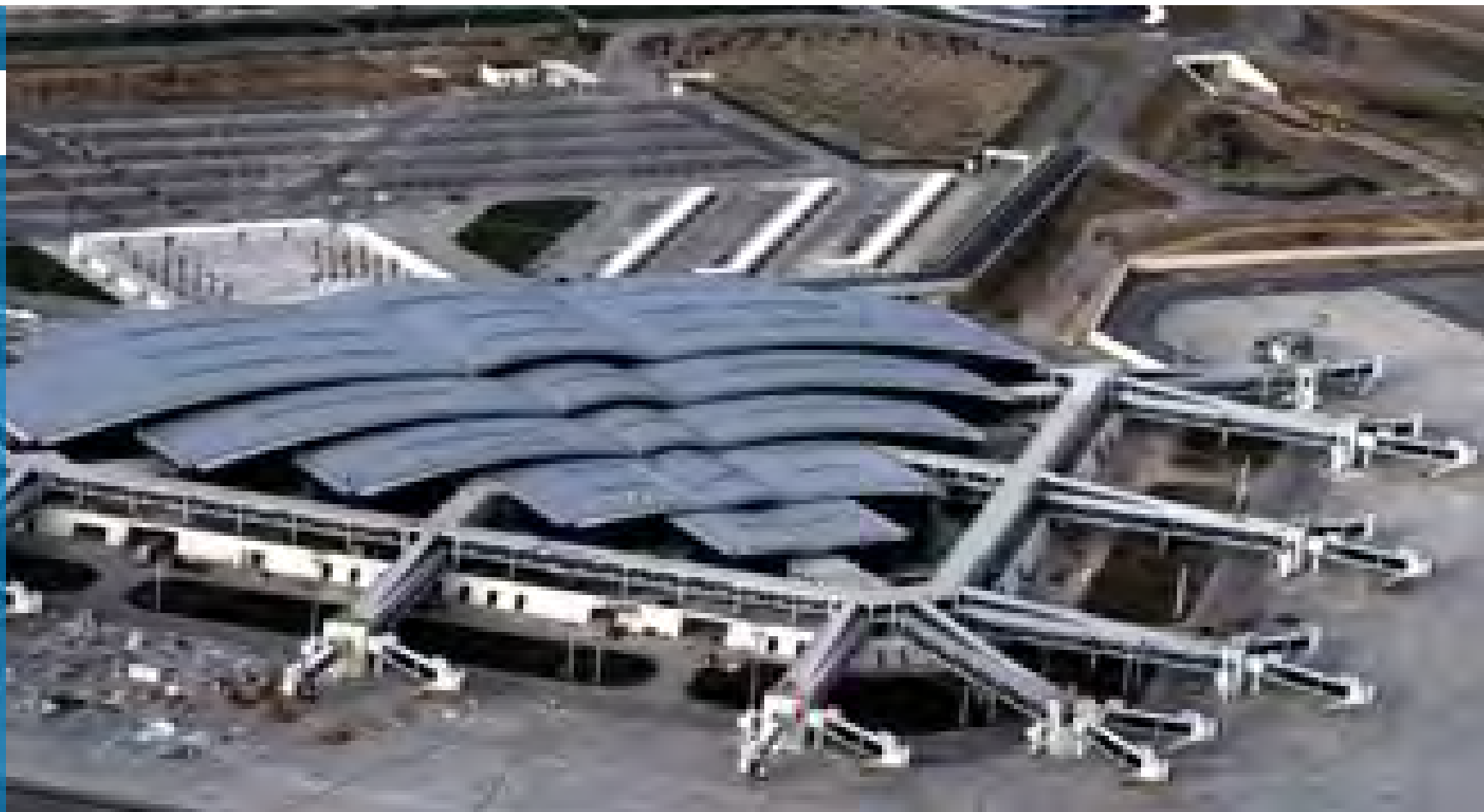
 Zeebrugge, Belgium  
2019

**Bituminous waterproofing system: 3.500 m<sup>2</sup>**

Solvent-free primer **Aquadère® + Soprarock® PB P3 TF + Sopralène® Techno 4 AF C1 FR** (roof) and **Sopralène® Techno Garden 4 AF C1 FR** (roof terrace).

The biggest challenge was to choose materials able of withstanding strong winds. Given its height, its location in a clear area on the coast and the large number of windows, the ABC tower was very demanding on this point.

## WORLDWIDE REFERENCES



### HAMMAMET INTERNATIONAL AIRPORT

 Hammamet, Tunisia  
2013

232 pcs **Certilam** insulated blades and frame.



## CONSTANTINE AIRPORT

 Constantine, Algeria  
2007

**Bituminous waterproofing system: 6.000 m<sup>2</sup>**  
Solvent-free primer **Aquadère®** + **Elastophène® 25** + thermal insulation +  
**Soprastick®** + **Sopralène® Flam 180 AR**



## CANCUN INTERNATIONAL AIRPORT

 Cancun, Mexico

**Bituminous waterproofing system:**  
**Sopralène® Flam 180 + Sopralène® Flam 180 GR White,**  
Cool Roofing membrane white upper surface highly reflective and  
extremely resistant to aging and UV rays.

## WORLDWIDE REFERENCES



### CONTROL TOWER TOCUMEN AIRPORT

 Tocumen, Panama  
2019

**Flashing skylights roofing : 500 m<sup>2</sup>**

**Soprasolin<sup>®</sup>** self adhesive waterproofing tape easily applied on most materials : wood, concrete, metal, fibre-cement, zinc, PVC. It is excellent for waterproofing details such as penetrations, ventilation, vents, sky lights, eaves, chimney stacks, insulation protection.

**PMMA liquid waterproofing system : 50 m<sup>2</sup>**

**ALSAN<sup>®</sup> 770** high-grade, PMMA-based resins with low-temperature flexibility and are used to create durable and reliable roof waterproofing membranes



## ALANYA DIS HATLAR TERMINAL

 Antalya, Turkey  
2007

**Synthetic waterproofing system: 6.500 m<sup>2</sup>**

**Flagon® EP/PR** synthetic membrane manufactured in TPO modified polyolefin.



## EDMONTON INTERNATIONAL AIRPORT

 Edmonton, Canada

**Bituminous waterproofing membranes:**

**Duotack®** adhesive, **Sopravap® 'R'**, **Sopralène® 180 SP**, **Soprabase® 520**, **Sopraflash® Flam Stick**, **Soprastar® Flam WF**, **Soprastar® Flam HF GR** and **Sopraseal® Stick 1100 T** for walls.

## WORLDWIDE REFERENCES



### PALMA DE MALLORCA AIRPORT

 Palma de Mallorca, Spain

252 pcs CERTILUX with laminated glass



## MENORCA AIRPORT

 Menorca, Spain

**86 Exubaie** with standard profile and double glazed and **32 Certilux** with PC blades.



## SUVARNABHUMI AIRPORT SATELLITE TERMINAL

 Bangkok, Thailand  
2019

**Bituminous waterproofing membranes: 180.000 m<sup>2</sup>**  
Mineral wool thermal insulation + **Colphène® (3 mm)**  
self-adhesive flexible SBS elastomeric bitumen waterproofing membrane.

## WORLDWIDE REFERENCES



### NANJING INTERNATIONAL AIRPORT

 Nanjing, China


**Synthetic waterproofing system: 100.000 m<sup>2</sup>**

**Flagon® SR** synthetic membrane of plasticised PVC with signal layer.



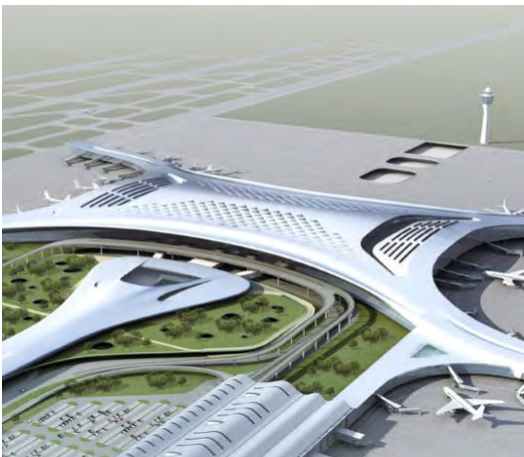


## ZHENGZHOU INTERNATIONAL AIRPORT

 Zhengzhou, China

**Synthetic waterproofing system: 180.000 m<sup>2</sup>**

**Flagon® SR** synthetic membrane of plasticised PVC with signal layer.



## IBIZA AIRPORT

 Ibiza, Spain

**48 pcs Certilux** with polycarbonate 6mm blades

# WORLDWIDE REFERENCES



photos credit Vidal + Asociados arquitectos



## SARAGOSSA AIRPORT

 Saragossa, Spain

**Tecsound® Soundproofing system: 25.000 m<sup>2</sup>**  
**Tecsound® 50.**

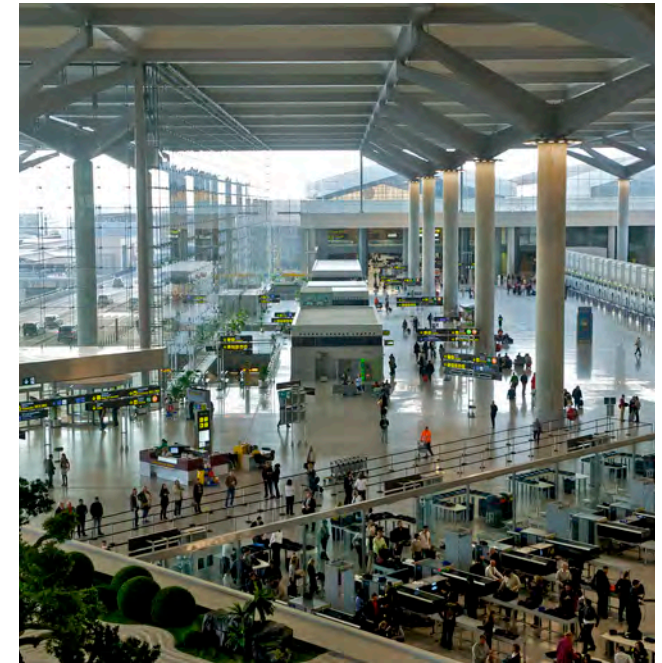


### NORTH TERMINAL, GRAN CANARIA AIRPORT

 Gran Canaria, Spain

**Tecsound® Soundproofing system: 10.000 m<sup>2</sup>**  
**Tecsound® 50.**

photos credit Arquitectos estudio lamela



### T3 MALAGA AIRPORT

 Malaga, Spain

**Tecsound® Soundproofing system: 30.000 m<sup>2</sup>**  
**Tecsound® 100.**

# WORLDWIDE REFERENCES



## TERMINAL T-1 - BARCELONA

 Barcelona, Spain

Tecsound® Soundproofing system: 140.000 m<sup>2</sup>  
Tecsound® 100.



## SANTIAGO DE COMPOSTELA AIRPORT

 Santiago de Compostela, Spain

**Tecsound® Soundproofing system: 10.000 m<sup>2</sup>**  
**Tecsound® 100.**



## LEON AIRPORT

 Leon, Spain

**Tecsound® Soundproofing system: 1.000 m<sup>2</sup>**  
**Tecsound® 100.**

## WORLDWIDE REFERENCES



### ARTURO MERINO BENÍTEZ INTERNATIONAL AIRPORT

 Santiago de Chile, Chile

Tecsound® Soundproofing system: 115.000 m<sup>2</sup>  
Tecsound® 70.



photos credit flickr.com (Gregouill)

## PALMA DE MALLORCA AIRPORT

 Palma de mallorca, Spain

**Tecsound® Soundproofing system: 40.000 m<sup>2</sup>**  
**Tecsound® 100.**

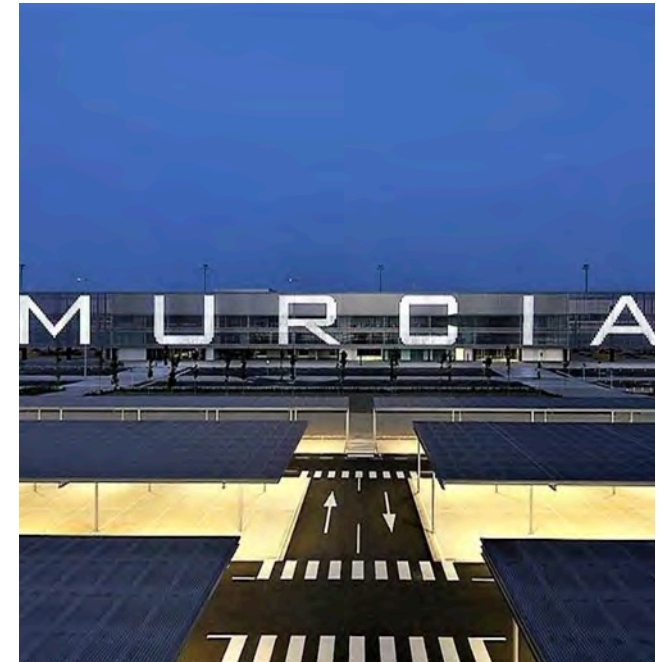


## NINYO AQUINO AIRPORT

 Manila, Philippines

**Tecsound® Soundproofing system: 30.000 m<sup>2</sup>**  
**Tecsound® 50.**

photos credit CNN Philippines Staff



## MURCIA AIRPORT

 Murcia, Spain

**Tecsound® Soundproofing system: 15.000 m<sup>2</sup>**  
**Tecsound® 100.**



### **SOPREMA at your service**

Looking for a sales contact in order to discuss a future project or a project that is under way?  
Any questions about the installation of our product range?

Contact SOPREMA Export department:

Tel.: **+33 (0)3 88 79 84 84**

E-mail: **[export@soprema.com](mailto:export@soprema.com)**

Further informations on **[www.soprema.com](http://www.soprema.com)**

