



**PROTECTION
SOLUTIONS**
FOR SCHOOLS

SCHOOLS REFERENCES WORLDWIDE



WORLDWIDE REFERENCES



ESHRA - HOTEL AND CATERING HIGH SCHOOL

 Algiers, Algeria
2017

15.000 m²

Aquadère[®], Sopralène[®] Flam 180, Sopralène[®] Flam 180 AR, bituminous waterproofing system for roofs, terraces and wet rooms.



GYMNASIUM OF WUHAN UNIVERSITY OF TECHNOLOGY

 Wuhan, China
2013

13.000 m²
Flagon® SR, PVC synthetic waterproofing system for roofs.



MEDICAL COLLEGE AND MULTI SPECIALITY HOSPITAL

 Rourkela, Odisha, India

12.000 m²
Colphène® BSW, waterproofing system for foundation and foundation walls.

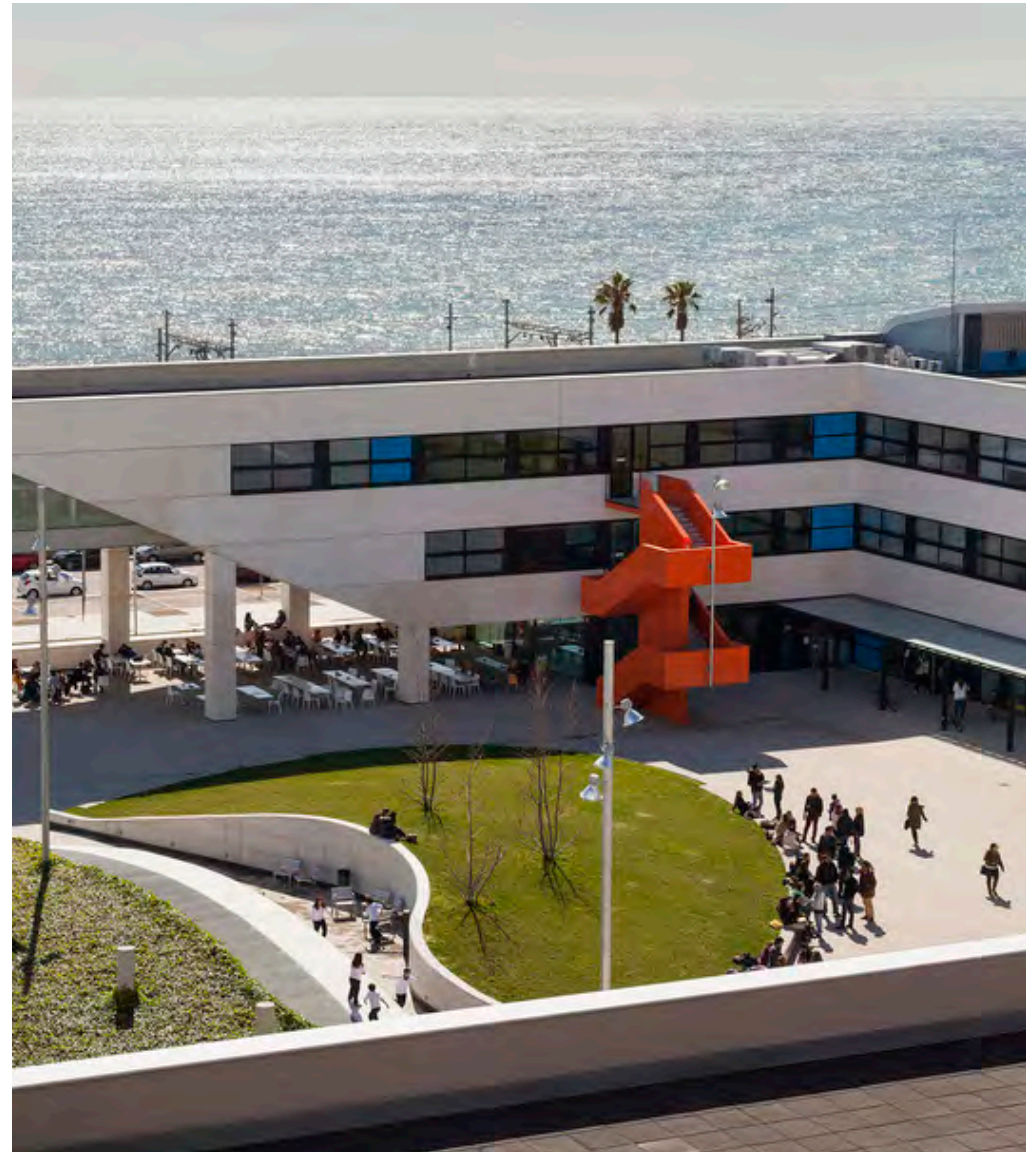


EUREKA TRAINAING AND REHABILITATION CENTRE

 Sopot, Poland
 2017

2.000 m²

Colphène® BSW, waterproofing system for foundations.



TECNO CAMPUS

 Mataró, Barcelona, Spain
2009-2010

3.500 m²

Tecsound® S LAM 100, soundproofing insulation membrane.



KINGSDALE SCHOOL

 London, United Kingdom

2 layers of PUR insulation, **Flagon® EP/PR-F**, TPO synthetic waterproofing system for roofs.



CHÂLUS SCHOOL

 Châlus, France

Isolair®, woodfibre insulation boards for facade.

WORLDWIDE REFERENCES



6

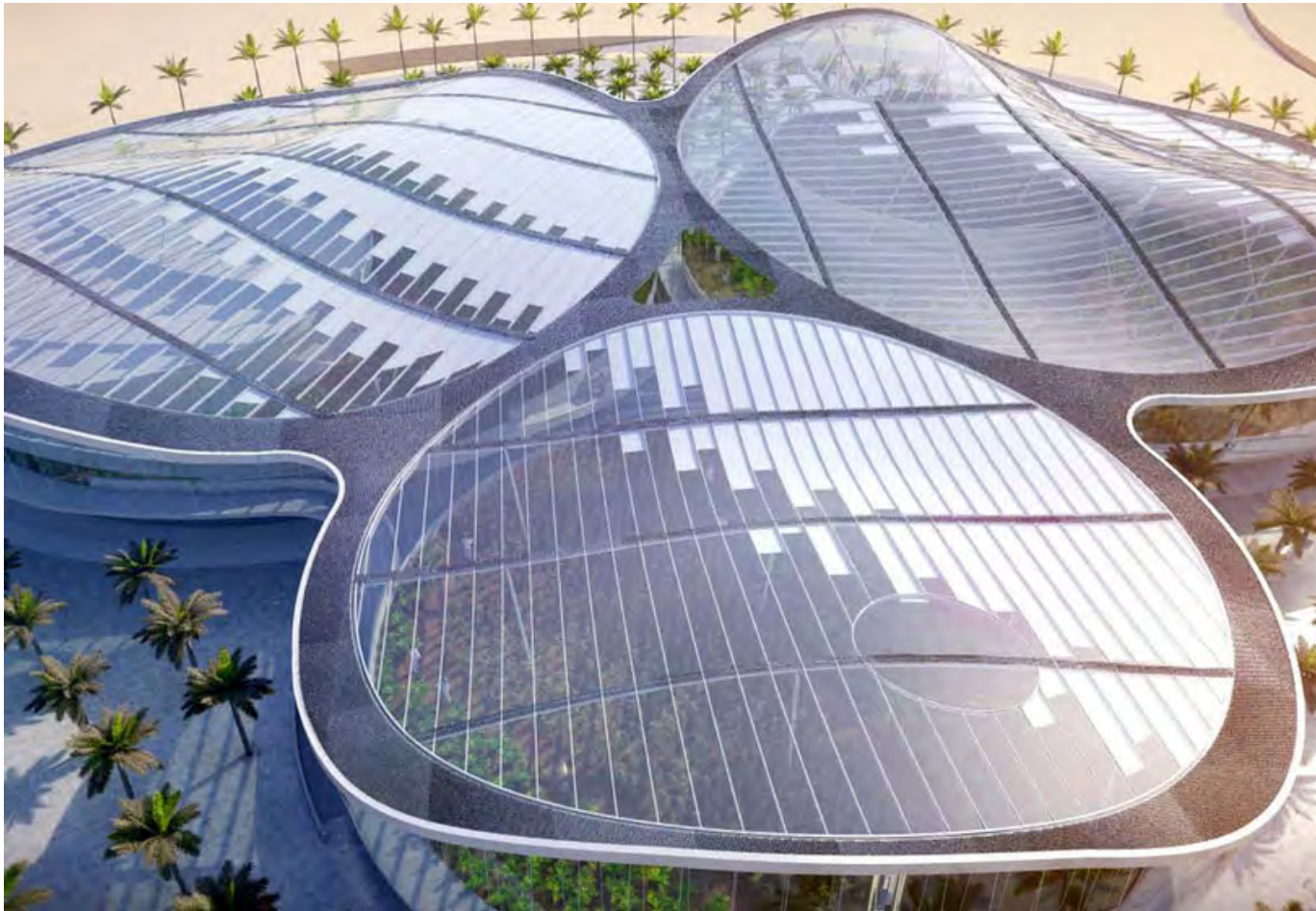


LANGARA COLLEGE, SCIENCE AND TECHNOLOGY BUILDING


 Vancouver, Canada
2019

2.500 m²

Sopraseal® Stick 1100 T, bituminous self-adhesive air/vapour barrier membrane for walls.



ICONIC GREENHOUSE EDUCATIONAL AND SCIENCE CENTER

 Abu Dhabi, United Arab Emirates

25.000 m²

Colphène® BSW, waterproofing system for foundation and foundation walls.



ALMENDRALEJO NEW HIGH SCHOOL

 Almendralejo, Badajoz, Spain
2020

2.400 m²

Rooftex V 150, Flagon® SV 12, Rooftex V 150, PVC synthetic waterproofing system for roofs under **Textlosa slab**.



MACKENZIE UNIVERSITY

 Sau Paulo, Brazil

945 m²

Flagon® SR, PVC synthetic waterproofing system for roofs.



TIANJIN URBAN CONSTRUCTION UNIVERSITY STADIUM

 Tianjin, China
2016

6.100 m²

Flagon® EP/PR, TPO synthetic waterproofing system for roofs.



CARRICK HIGH SCHOOL

 Pittsburg, Pennsylvania, USA
2017

Sopra-Iso® PIR insulation, **Sopraboard**®, **Sopralène**® Flam Stick, **Sopralène**® Flam 180 FR GR, bituminous waterproofing system for roofs.

Alsan® RS 276 Primer, **Alsan**® RS 230, **Alsan**® RS 289, PMMA fluid-applied waterproofing system for the logo on the roof.



TEC CAMPUS CHIAPAS - ITSEM

 Tuxtla Gutiérrez, Mexico

Sopralène® Flam 180, **Sopralène**® Flam 180 GR, bituminous waterproofing system for roofs.

WORLDWIDE REFERENCES



DIPLOMATIC AND INTERNATIONAL RELATIONS INSTITUTE

 Algiers, Algeria
2015-2017

5.000 m²

Aquadère®, **Elastophène® 25**, **Efigreen® Duo+** PIR insulation, **Sopralène® Flam 180**, **Sopralène® Flam 180 AR**, bituminous waterproofing for roofs, terraces, wet rooms.
Flagon® Silver Art, PVC synthetic and aesthetic waterproofing system for domes.



SAIGON UNIVERSITY THEATER

 Ho Chi Minh city, Vietnam
2019

4.800 m²

Tecsound® 70, soundproofing system.



SKEMA BUSINESS SCHOOL

 Lille, France
2018

Bluesteel Therm DV Elec XL 180/180 smoke ventilation and daily ventilation with PCA Pearl Inside infills.

WORLDWIDE REFERENCES



STUDENT SOCIAL CENTRE, SULEYMAN DEMIREL UNIVERSITY

 Isparta, Turkey
2018

16.500 m²

Sopralène® Flam Antirock P, bituminous waterproofing system for terraces.



AMERICAN SCHOOL

 Yaounde, Cameroon
2016

1.670 m²

Resiproof Primer, Resiproof (2 layers), **Resiproof Top**, liquid waterproofing system for roofs.



NOAH'S ARK KINDERGARTEN

 Erfurt, Germany
2011

1.122 m²

Primer **Glacivap**, **Sopralène® Flam 30**, **Sopralène® Flam Jardin S5**, bituminous waterproofing system for roofs.



ALFAJARÍN HIGH SCHOOL


 Alfajarín, Spain
2020

1.500 m²

Morterplas FV 3 kg, Morterplas FP 3 kg, bituminous waterproofing system for roofs.



FOURTH AVENUE JUNIOR HIGH SCHOOL

 Yuma, Arizona, USA

Sopraboard®, **Elastophène® Ultra-Stick**, **Elastophène® Ultra-Stick FR GR**, self-adhered bituminous waterproofing system for roofs.



MOHAMED VI POLYTECHNIC UNIVERSITY

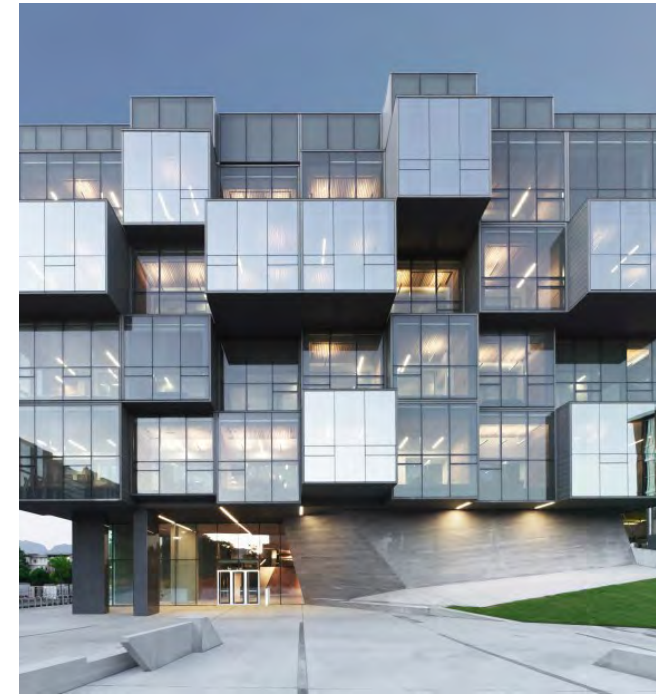
 Ben Guerir, Morocco
2019

600 m²

Alsan® 410, liquid waterproofing system under protection for balconies.

12.000 m²

Sopralène® Flam Unilay, XPS SL insulation, inverted bituminous waterproofing system for roofs.



UBC FACULTY OF PHARMACEUTICAL SCIENCES

 Vancouver, Canada

Waterproofing systems for buildings.

WORLDWIDE REFERENCES



PINGHU YIJIN CARDIFF SCHOOL

 Jiaxing, China
2019

800 m²

Flagon® SR, PVC synthetic waterproofing system for roofs.



JEAN MERMOZ HIGH SCHOOL



Dakar, Senegal
2020

450 m²

Primer **Aquadère®**, **Sopracolle 300N** cold applied adhesive, **Efigreen® Alu+** PIR insulation, **Soprastick® SI**, **Sopralène® Flam 180 ARD Grey**, bituminous waterproofing system for roofs.

205 m²

Sopracolle 300N, **Sopralène® Unlay ARD grey**, unilayer bituminous waterproofing system for roofs.

345 ml

Equerre de renfort Sopralène®, **Chape Atlas® AR**, bituminous waterproofing system for upstands.



BALANGIR MEDICAL COLLEGE



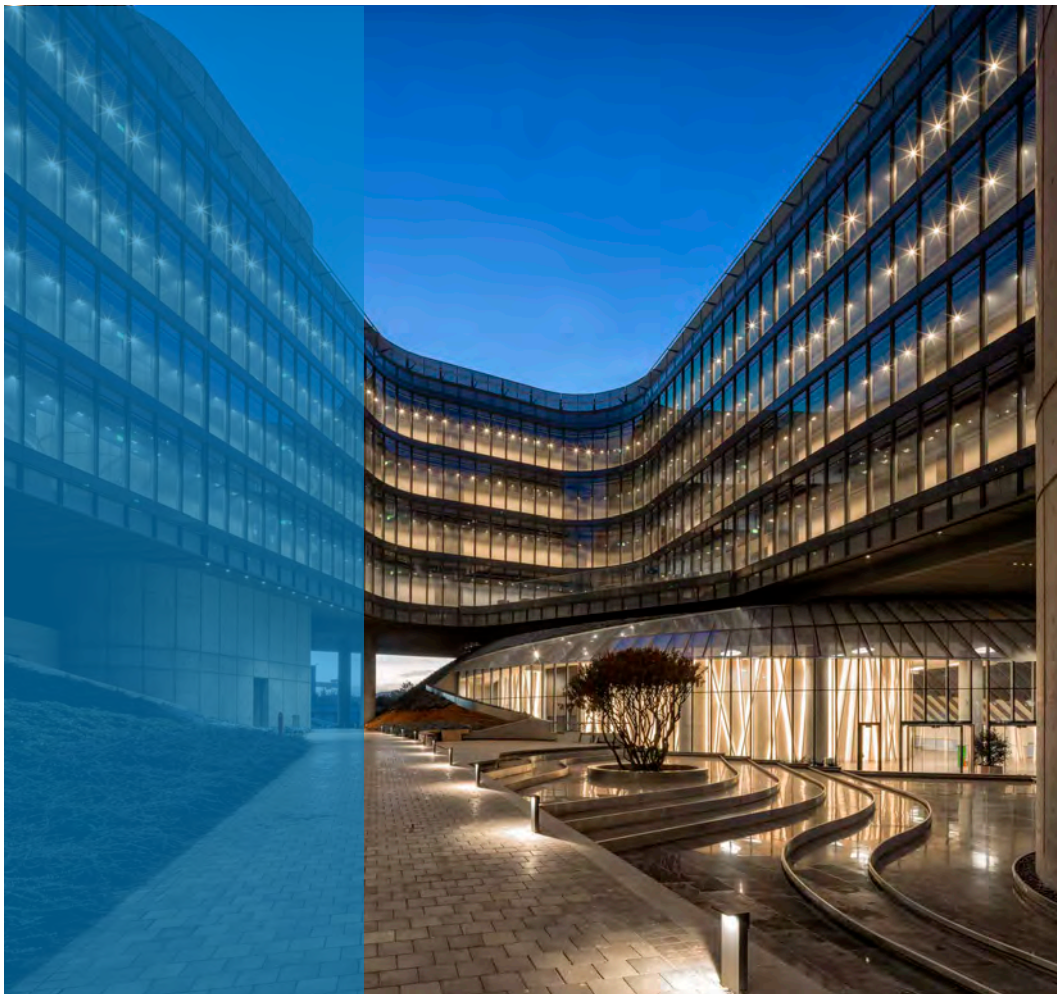
Gandhrel, Odisha, India

5.200 m²

Flagon® EP/PR, TPO synthetic waterproofing system for roofs.

400 ml

Flagon® walkway, TPO synthetic waterproofing system for roof walk path.



GARANTI TECHNOLOGY CAMPUS

 Istanbul, Turkey
2013

70.000 m²

Sopralène® Flam Jardin Cap, waterproofing system for green roofs.

70.000 m²

Sopralène® Flam 180, waterproofing system for terraces.

70.000 m²

Sopralène® S Flam 180-40, waterproofing system for terraces.



CHAUSSIN MIDDLE SCHOOL

 Chaussin, France
2016

Pavatherm® Plus 60 mm, woodfibre insulation for facade.



ATADES NEW HIGH SCHOOL

 Zaragoza, Spain
2020

3.000 m²

Morterpas SBS FV 4 kg, Morterpas SBS FP 4 kg, bituminous waterproofing system for roofs.



SHANGHAI ENVIRONMENTAL SCHOOL

 Shanghai, China
2015

Sopralène® Flam Jardin Cap, bituminous waterproofing system for green roofs.

**WORLDWIDE
REFERENCES**



SINAV COLLEGE

 Ankara, Turkey
2019

4.000 m²

Sopralène® Flam Antirock P, bituminous waterproofing for terraces.

1.850 m²

Sopralène® Flam Jardin Cap, bituminous waterproofing for green roofs.



HEILONGJIANG WATER CONSERVANCY RESEARCH INSTITUTE

 Harbin, China
2009

19.000 m²

Sopralène® Flam 180, bituminous waterproofing system for roofs and terraces.



COLUMBIA UNIVERSITY MEDICAL CENTER

 Northern Manhattan, New York, USA

Below grade waterproofing system and two-ply bituminous system under intensive vegetated roof system. **Alsant® PMMA**, fluid-applied flashing system.

WORLDWIDE REFERENCES



UTEC UNIVERSITY



Lima, Peru

3.000 m²

Elastophène® Flam 180-25, Sopralène® Flam Jardin Cap, Sopradrain, Soprafiltre bituminous waterproofing system for green roofs.

Alsan® Flashing Jardin, Alsan® RS renfort, liquid waterproofing system for upstands.



**CULTURAL FACTORY COMA CROS:
UNIVERSITY SCHOOL ERAM (UDG) AND TECHNICAL
SCHOOL ETECAM**

 Salt, Girona, Spain
2011

2.000 m²
Tecsound® FT75, Tecsound® SY70, soundproofing insulation.



**SPORTS AND RECREATION CENTRE,
NANYANG TECHNOLOGICAL UNIVERSITY**

 Singapore, Singapore

7.000 m²
Self-adhesive membrane 1.5 mm, waterproofing system for roofs.



ESHRA - HOTEL AND CATERING HIGH SCHOOL

 Oran, Algeria
2016-2018

8.000 m²

Primer **Aquadère®**, **Elastophène® 25**, **Sopralène® Flam 180**, **Sopralène® Flam 180 AR**, **Sopralène® Flam Jardin Cap**, bituminous waterproofing system for roofs, terraces, wet rooms, buried walls and green roofs.



LA CRECHE EN PAPIER, CHILDREN DAY NURSERY

 Paris, France
2014

900 m²

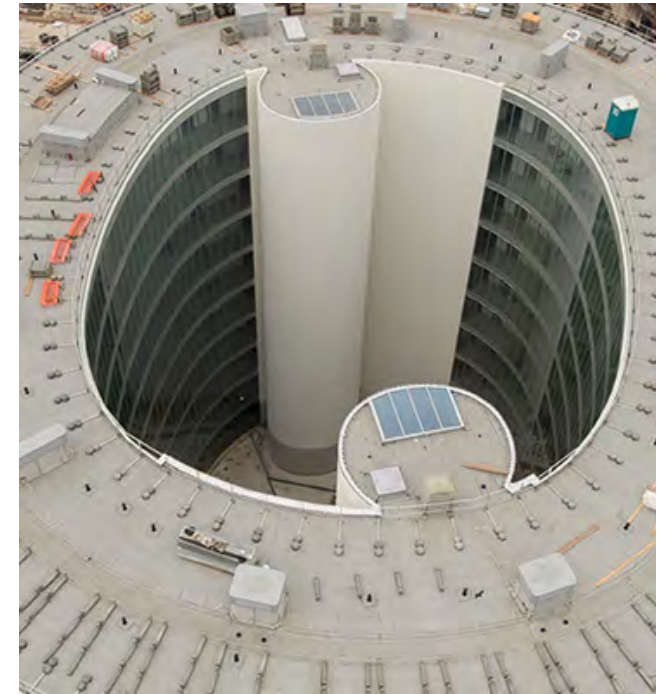
Precultivated Sopranature® Tundra rolls, vegetated overburden for green roofs.



DEER MEADOW PRIMARY SCHOOL

 Greencastle, Indiana, USA

Sentinel® Copper Art P150 HFB, PVC synthetic and aesthetic waterproofing system for roofs.



BOCCONI UNIVERSITY

 Milan, Italia

Nova E30, plastomeric waterproofing system for roofs.

**WORLDWIDE
REFERENCES**



DENIS SASSOU NGUESSO UNIVERSITY

 Kintele, Brazzaville, Republic of the Congo
2019

Primer **Elastocol®**, **Soprastick® SI**, **Elastophène Flam 25 AR**, bituminous waterproofing system for roofs.
Alsan® Flashing, liquid waterproofing system for upstands.
Texsalastic, ready-to-use, flexible, two-component waterproofing system for wet rooms.



BEIJING GEELY BUSINESS COLLEGE

 Beijing, China
2018

25.000 m²

Flagon® SR, PVC synthetic waterproofing system for roofs.



LANZAROTE, SPAIN

 Lanzarote, Spain
2020

300 m²

Emufal Primer, Morterplas APP FV 3 kg, Morterplas APP FP 4 kg Garden, Rooftex V 300, Drentex Protect Eco Garden Plus, bituminous waterproofing system for extensive green roofs.



KATIP CELEBI UNIVERSITY FACULTY OF DENTISTRY

 Izmir, Turkey
2019

13.000 m²

Colphène® BSW, foundation and foundation walls.



NAN HUA HIGH SCHOOL

 Singapore, Singapore
2019

1.200 m²

Colphène® 2500 NG, bituminous waterproofing system for roofs and/or foundation walls.

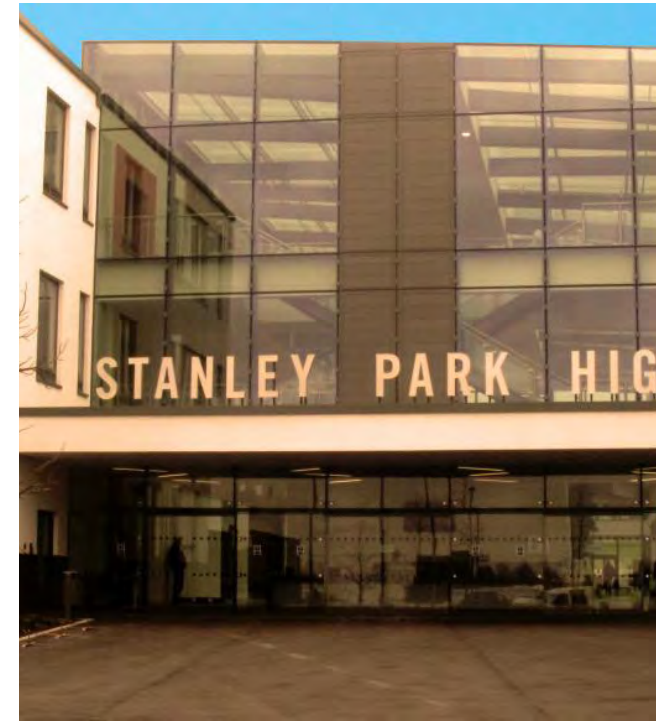


ZIANIA NEW FACULTY OF MEDICINE


 Algiers, Algeria
2018-2012

22.000 m²

Primer **Aquadère®**, **Sopralène® Flam 180**, **Sopralène® Flam Jardin Cap**, **Protecdrain**, bituminous waterproofing system for buried walls.



STANLEY PARK HIGH SCHOOL

 Carshalton, Surrey, United Kingdom
2015

Luxlame, smoke evacuation system with single or double glazed glass slats or opaque filling.

WORLDWIDE REFERENCES



DUKE KUNSHAN UNIVERSITY


 Kunshan, China
2019

15.000 m²

Flagon® EP/PR, TPO synthetic waterproofing system for roofs.



MICHIGAN STATE UNIVERSITY

 East Lansing, Michigan, USA

15.000 m²

Sopralène® 180 sanded, Sentinel® Copper Art P150 HFB, bituminous and TPO synthetic for aesthetic hybrid waterproofing system for roofs.



SCHOOL GROUP GABARRET

 Gabarret, France
2014

1.400 m²


Sopranature® Tundra boxes, vegetated overburden for green roofs.

Groupe Scolai

WORLDWIDE REFERENCES



ITU MASLAK CAMPUS

 Istanbul, Turquie

17.000 m²

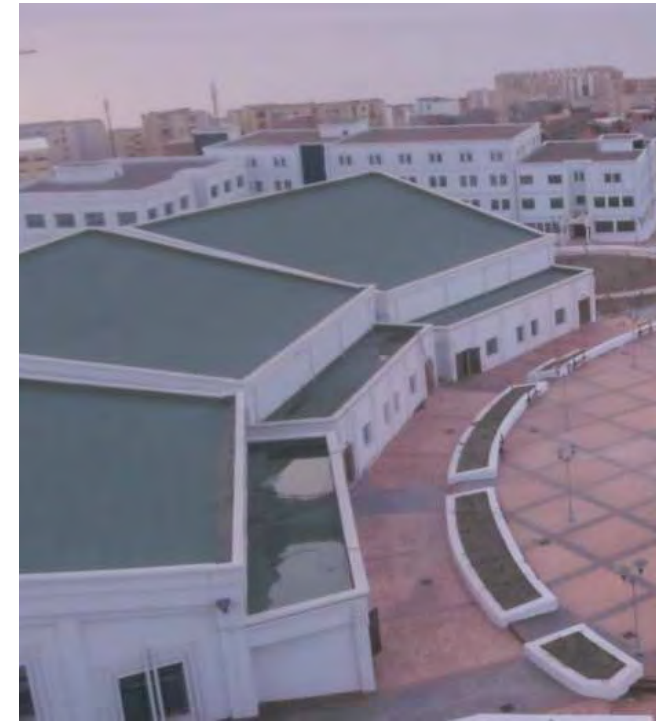
Sopralène® Flam S 180-40, Sopralène® Flam Jardin Cap, bituminous waterproofing system for green roofs/terraces.



STUDENT CULTURAL HOUSE

 Ho Chi Minh City, Vietnam
2019

2.800 m²
Tecsound® 70, soundproofing system.



NEW FACULTY OF MEDICINE

 Mostaganem, Algeria

6.000 m²
Primer Aquadère®, Sopralène® Flam 180, Sopralène® Flam 180 AR, bituminous waterproofing system for roofs.



PABELLON DE GOBIERNO, MALAGA UNIVERSITY

 Malaga, Spain
2020

3.000 m²

Emufal Primer, Morterplas SBS FP 4,8 kg, Drentex Protect Plus,
bituminous waterproofing system for buried walls.

30.000 m²

Emufal Primer, Rooftex V 200, Morterplas SBS FP 4,8 kg,
XPS SL 100 insulation, **XPS SL 50** insulation, inverted bituminous
waterproofing system under gravel for roofs.



METROPOLITAN SCHOOL

 Panama City, Panama

10.000 m²

Tecsound® FY 35, soundproofing system.



HARBIN HUADE UNIVERSITY



Harbin, China
2019

Flagon® SR, PVC synthetic waterproofing system for roofs.



UNIVERSITY OF OREGON



Eugene, Oregon, USA

Sopraseal® Stick VP, Soprasolin® HD, bituminous self-adhesive air/vapour barrier membrane for walls.

**WORLDWIDE
REFERENCES**



GRANDE TERRE NORTHERN HIGH SCHOOL

 Port Louis, Guadeloupe
2009

1.576 m²

Soprafix[®] HP or Soprafix[®] Stick, Sopralène[®] Flam 180 AR, bituminous waterproofing system for roofs.

7.510 m²

Soprastick[®] SI, Sopralène[®] Flam 180 AR, bituminous waterproofing system for roofs.

1.772 m²

Soprastick[®], Sopralène[®] Flam 180 AR, bituminous waterproofing system for roofs.

1.920 m²

Alsan[®] H80 primer, Alsan[®] 400, liquid waterproofing system for terraces and wet rooms.



XIANYANG CLOTHING ENGINEERING COLLEGE

 Xianyang, China
2019

6.000 m²

Flagon® SR, PVC synthetic waterproofing system for roofs.



JEAN MOULIN PRESCHOOL

 Cuers, France
2015

628 m²

Sopranature®, vegetated overburden for green roofs.



PEI CHUN PUBLIC SCHOOL


 Singapore, Singapore
2019

7.800 m²

Soprarock M, mineral wool insulation.



ECO CFA OF CHARENTE (WORK-STUDY TRAINING CENTER)

 Chasseneuil-sur-Bonnieure, France
2017

56 Lighttubes natural light pipes.



YEW CHUNG INTERNATIONAL SCHOOL OF CHONGQING

 Chongqing, china
2018

3.000 m²

Flagon® SR, PVC synthetic waterproofing system for roofs.



MAHMUD HUDAYI FOUNDATION CAMLICA

 Istanbul, Turkey
2012

2.500 m²

Sopralène® Flam Antirock P, bituminous waterproofing system for parking areas.

WORLDWIDE REFERENCES



DEUSTO UNIVERSITY

 Bilbao, Spain
2020

2.400 m²

Emufal Primer, Morterplas SBS FM 3 kg, Morterplas SBS FV 4 kg MIN, bituminous waterproofing system for roofs.



LIBERTY FRENCH HIGH SCHOOL

 Bamako, Mali
2018

500 m²

Soprastick® SI, Elastophène® Flam 25 AR, bituminous waterproofing system for roofs.



MEV COLLEGE

 Izmir, Turkey
2019

8.000 m²

Sopralène® Flam Bond, bituminous waterproofing system under protection for terraces.



TOURISM HOSPITALITY AND RESTAURANTS TRAINING CENTRE

 Diamniadio, Senegal
2019

1.915 m²

Sopracolle 300 N cold applied adhesive, **Sopralène® Unilay ARD grey**, unilayer bituminous waterproofing system for roofs.

Elastophène® Flam 180-25, Elastophène® Flam 25, NTS 170, bituminous waterproofing system for accessible terraces.

697 ml

Corner reinforcement Sopralène®, Chape® Atlas AR or Sopralène® Flam S 180-35, bituminous waterproofing system for upstands.



TECHNOLOGY UNIVERSITY OF PANAMA

 Panama City, Panama
2019

5.500 m²

Soprakote, Sopralène® Flam Unilay AR, wbituminous waterproofing system for roofs.

Alsan® Flashing, liquid waterproofing system for upstands and details.





ENVIRONMENTAL SCIENCE AND CHEMISTRY BUILDING AT UNIVERSITY OF TORONTO SCARBOROUGH

 Toronto Scarborough, Canada

1.700 m²

Elastophène® 180 sanded, Sopralène® Flam 250 GR, Elastophène® 180 PS, Sopralène® FL 250 GR, bituminous waterproofing system for roofs and/or terraces.



BEDOK GREEN SCHOOL

 Singapore, Singapore
2019

2.440 m²

Colphène® 2500 NG, bituminous waterproofing system for roofs and/or foundation walls.

WORLDWIDE REFERENCES



PELEFORO GON COULIBALY UNIVERSITY

  Korhogo, Ivory Coast
2015

12.000 m²

Elastophène® Flam 25, Elastophène® Flam 25 AR or Sopralène® Flam 180 AR, bituminous waterproofing system for roofs.



FROEHLICHER MIDDLE SCHOOL

 Sissonnes, France
2017

4.000 m²

Precultivated Sopranature® Tundra rolls, vegetated overburden for green roofs.



PROVINCIAL TECHNICAL SCHOOL

 Boom, Belgium
2017

Sopralène® Optima, bituminous waterproofing system for roofs.
Alsan® Flashing, liquid waterproofing system for upstands and details.



SOPREMA at your service

Looking for a sales contact in order to discuss a future project or a project that is under way? Any questions about the installation of our product range?

Contact SOPREMA Export department!

Tel.: **+33 (0)3 88 79 84 84**

Email: **export@soprema.com**

Find all the information on **www.soprema.com**

