

SOPREMA
GROUP



**PROTECTION
SOLUTIONS**
FOR HOSPITALS

HOSPITALS REFERENCES WORLDWIDE



WORLDWIDE REFERENCES



CHU - UNIVERSITY HOSPITAL CENTER



Tangier, Morocco
2017-2020

10.000 m²

Primer, **Elastophène® Flam 180-25, Elastophène® Flam 25**, bituminous waterproofing system under protection.

6.000 m²

Primer, **Elastovap, Efigreen® Duo + 40 mm** thermal insulation, **Sopravoile 100, Elastophène® Flam 180-25, Elastophène® Flam 25**, bituminous waterproofing system under protection.

128 m²

Primer, **Elastophène® Flam 25, Sopralène® Flam Jardin Cap**, bituminous waterproofing system for planters.

3.500 ml

Primer, **Sopralène® Flam S 180-35, Sopralène® Flam 180 AR**, bituminous waterproofing system for upstands.

600 m²

Primer, **Elastophène® 180-25, Elastophène® Flam 25 AR, XPS 500** insulation, **NTS 170, Gravel, NTS 170**, bituminous waterproofing system for vehicles.

3.000 m²

Elastocol® 500, Antirock® P, bituminous waterproofing system under asphalt for parkings.



CHU - UNIVERSITY HOSPITAL CENTER

 Owendo, Gabon
2013

11.640 m²

Aquadère®, **Aerisol® Flam**, **Elastophène® Flam 25**, **Elastophène® Flam 25 ARC**, self-protected bituminous waterproofing system.

3.720 ml

Aquadère®, **Equerre Sopralène®**, **Sopralène® Flam 180 ARC**, bituminous waterproofing system for upstands.

120 m²

Soprajoint®, **Bande LM Soprajoint®**, bituminous waterproofing system for expansion joints.



MOTHERS AND CHILDREN HOSPITAL

 Conakry, Conakry Guinea
2016

9.740 m²

Aquadère®, **Elastophène® Flam 180-25**, **Elastophène® Flam 25**,
bituminous waterproofing system under protection.

1.560 ml

Aquadère®, **Sopralène® Flam S 180-35**, (in two layers),
bituminous waterproofing system for upstands.



CITY HOSPITAL


 Taipei, Taiwan
2016

340 m²

Flagon® PVC, synthetic waterproofing systems.



QUEEN SILVIA'S CHILD- AND YOUTH HOSPITAL

 Gothenburg, Sweden
2018-2020

4.000 m²

Soprarock YEP 3600® provisionally waterproofing.

Sloped Foamglas insulation, **Soprarock YEP 3600**, **Sopralène**® MF 5500.



LE VIGE RESIDENTIAL ACCOMMODATION FOR DEPENDENT ELDERLY PEOPLE

 Soubisse, France

Diffutherm 60 mm, external woodfibre insulation boards for render.

WORLDWIDE REFERENCES



6



PAITILLA HOSPITAL

 Panama City, Panama
2019

5.500 m²

Elastocol® 500, Sopralène® Flam 180 GR bituminous waterproofing system for roofs.

Alsan® Flashing, Alsan® Fleece, coloured granules, liquid waterproofing system for upstands.



AYACUCHO HOSPITAL

 Ayacucho, Peru

6.500 m²

Soprafix® HD, Sopralène® Flam 40 AR bituminous waterproofing system for roofs.

Alsan® Flashing, Alsan® RS reinforcement, liquid waterproofing system for upstands.



NEW MILITARY HOSPITAL AIN NAADJA

 Alger, Algeria
2019

2.000 m²

Aquadère®, Sopralène® Flam 180, Sopralène® Flam Jardin Cap bituminous waterproofing system for green roofs.



HOPE CENTRE

 Vancouver, Canada
2014

Colphène® Torch'n Stick, bituminous waterproofing system for foundations.

Sopralène® Flam 180, bituminous waterproofing system for roof.



ISPAT GENERAL HOSPITAL

 Rourkela, Odisha, India

12.000 m²

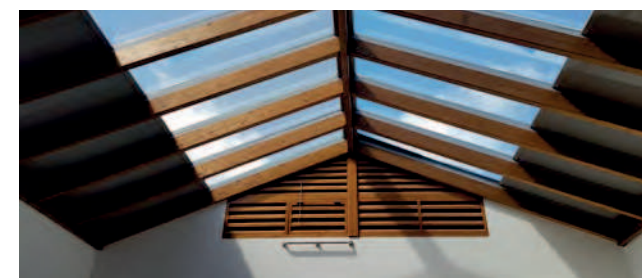
Colphène® BSW, waterproofing system for foundation and foundation walls.



NHS ROYAL NATIONAL ORTHOPAEDIC HOSPITAL

 London, United Kingdom

Sopradère® Quick Primer, **EVA 35**, **130 mm Sopratherm** Insulation, **Ventirock SBS 3 TF**, **Sopralène® Flam 180 TF**, **Sopralène® Flam 180 AF**, bituminous waterproofing system for roofs.
Alsan 770 TX, PMMA waterproofing system for details.



PSYCHIATRIC HOSPITAL OF SAINT MARTIN

 Marigot, Saint Martin

490 m²

PUR insulation, **Soprastick® SI**, **Sopralène® Flam 180 AR**, bituminous waterproofing system for roofs.

Corner reinforcement Sopralène®, **Sopralast® 50 TV Alu**, waterproofing system for upstands.

WORLDWIDE REFERENCES



photo credit : heinlewiecherpartner

REGIONAL CARE STRUCTURE IN TAMANRASSET



Tamanrasset, Algeria
2013-2016

20.000 m²

Aquadère®, **Sopralène® Flam 180**, **Sopralène® Flam Jardin Cap**, **Soprafiltre**, bituminous waterproofing system for green roofs.

Primer, **Elastophène® 25**, insulation, **Elastophène® Flam 25**, **Elastophène® Flam 180-25**, **Sopravoile 100**, **Ecran NTS 170**, bituminous waterproofing system under protection.



WEST GUYANESE HOSPITAL CENTER



Saint Laurent du Maroni, Guyana
2017

17.000 m²

Primer, PSE insulation, **Soprastick®**, **Sopralène® Flam 180 AR**, self-protected bituminous waterproofing system.
Alsan® Flashing, **Alsan® Fleece**, **coloured granules**, liquid waterproofing system for upstands.



photo credit : Noticias Galicia

CHUAC - UNIVERSITY HOSPITAL


 A Coruna, Spain
2018

1.500 m²

Flagon® SV, synthetic waterproofing systems.



US MEMORIAL HERMANN HOSPITAL

 Houston, Texas, USA
2017

1/4" Sopraboard™, Colply™, Duotack®, SG granules waterproofing system for roofs.



ALTUNIZADE ACIBADEM HOSPITAL



Istanbul, Turkey
2016

25.000 m²

Colphène® BSW waterproofing system for foundation and foundation walls.

20.000 m²

Sopralène® S Flam 180-40 waterproofing system for terraces.



IMSS CLINIC 52

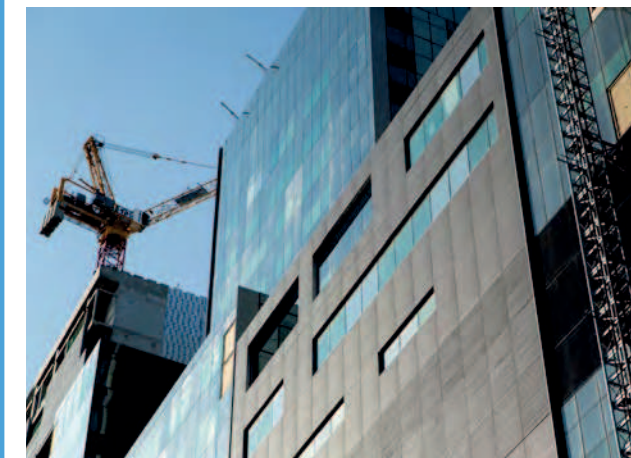


Guadalajara, Mexico

5.000 m²

Waterproofing system for green roofs.

**WORLDWIDE
REFERENCES**

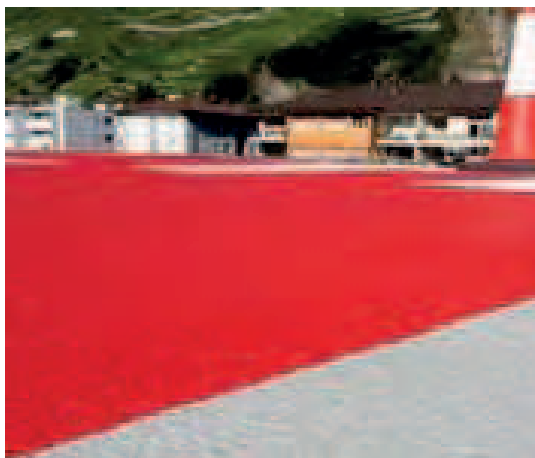


CHUM -HOSPITAL RESEARCH CENTRE

 Montréal, Canada
2013

5.000 m²

Sopra-Iso insulation, **Elastophène® 180 PS**, **Soprastar® Flam HDGR**, bituminous reflective waterproofing system for roofs.

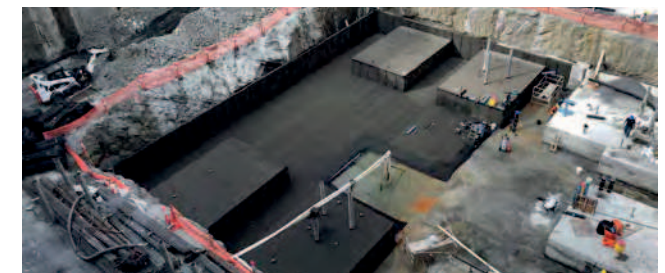


MARTIGNY HOSPITAL

 Martigny, Switzerland
2016

270 m²

Alsan® 770, PMMA liquid waterproofing system with **Alsan® 870 RS** as wearing layer and **Alsan® 971F** as finishing layer.



HOSPITAL PACIFICA SALUD

 Panama City, Panama
2019

3.500 m²

Colphène® BSW H, **Colphène® 3000**, **Elastocol® Stick H20**, **Elastocol® 500**, waterproofing system for foundation and foundation walls.

Alsan® Flashing, liquid waterproofing system for details.

WORLDWIDE REFERENCES



MOSCATI HOSPITAL

 Abidjan, Ivory Coast
2013

420 m²

Aquadère®, **Sopracolle 300 N**, PSE thermal insulation, **Soprastick®**, **Sopralène® Flam 180 AR**, self-protected bituminous waterproofing system for roofs.

15.100 m²

Aquadère®, **Aerisol Flam**, **Elastophène® Flam 25**, **Elastophène® Flam 25 AR**, self-protected bituminous waterproofing system for roofs.

1.490 m²

Sopralène® Flam 180 AR s/ galon, bituminous membrane for roof walkways.

1.020 m²

Aquadère®, **Elastophène® Flam 25**, **Sopralène® Flam Jardin Cap**, **Sopradrain**, **Soprafiltre**, bituminous waterproofing system for green roofs.

3.600 ml

Aquadère®, **Sopralène® Flam S 180-35** or **Corner reinforcement Sopralène®**, **Sopralène® Flam 180 AR**, bituminous waterproofing system for upstands.

1.120 m²

H80 primer, **Alsan® 400** liquid waterproofing system under protection.



JAEN HOSPITAL



Lima, Peru

4.500 m²

Elastophène® Flam 180-25, Sopralène® Flam 40 AR, bituminous waterproofing system for roofs.

Alsan® Flashing, Alsan® RS reinforcement, liquid waterproofing system for upstands.



CHU - UNIVERSITY HOSPITAL CENTRE

 Orléans, France
2013

40.000 m²

Efigreen® Duo +, PIR thermal insulation for buildings.



LES LILAS DIAGNOSTIC CLINIC

 Oran, Algeria
2016

3.000 m²

Aquadère®, Sopralène® Flam 180, Sopralène® Flam 180 AR, bituminous waterproofing system for roofs.



photo credit : gaceta de Salamanca


SALAMANCA HOSPITAL

 Salamanca, Spain
2017

500 m²
Aisladeck VV60 +, PIR thermal insulation for buildings.



THE CHINESE HOSPITAL

 San Francisco, California, USA
2015

1.400 m²
Sentinel® G150, Sentinel® H20 bonding adhesive, Sentinel® VCM, Sentinel® prefabricated corners and pipe flashing, PVC synthetic waterproofing system for roofs.
Sentinel® walkway pad.



WORLDWIDE
REFERENCES



TAKSIM FIRST AID HOSPITAL

 Istanbul, Turkey
2016

3.000 m²

Colphène® BSW waterproofing system for foundation and foundation walls.



CAPESTERRE-BELLE-EAU HOSPITAL


 Capesterre-Belle-Eau, Guadeloupe
2008

3.880 m²

Sopralène® Flam Stick, Sopralène® Flam 180 AR, bituminous waterproofing system.



MIDDLESEX HOSPITAL

 Middlesex, United Kingdom
2018

Duoflex®, inverted hot fluid applied waterproofing system.

WORLDWIDE REFERENCES



CHU - UNIVERSITY HOSPITAL CENTRE

 Agadir, Morocco
2019-2020

32.000 m²

Vélaphone® Fibre 22, impact soundproofing for floor.

39.000 ml

Vélaphone® 145 resilient strip.



CHU - GUADELOUPE NEW UNIVERSITY HOSPITAL CENTRE

 Dothemar, Abymes, Guadeloupe

5.280 m²

Sopralène® Flam Jardin Cap, Protecdrain, bituminous waterproofing system for buried walls.

Alsan® Flashing Jardin, Curfer, liquid waterproofing system for walls top.



BELLEVUE HOSPITAL

 New York, New York, USA
2008

1.800 m²

ALSAN® RS 260 LO, PMMA liquid waterproofing system for terraces balconies and rooftop basket ball court.



BOSHAN CHINESE MEDICINE HOSPITAL

 Shandong Province, China
2016

7.000 m²

Colphène® BSW waterproofing system for foundation and foundation walls.



SANTA BARBARA HOSPITAL

 Soria, Spain
2017

4.200 m²

Emufal Primer, Morterplas SBS FV 4kg, Morterplas SBS FP 4 kg, Rooftex V geotextile, **XPS SL** insulation, **Rooftex V** geotextile, inverted waterproofing system under protection.

photo credit : imperior Asbitra



EMSEY HOSPITAL

 Istanbul, Turkey
2019

51 m²

Tecsound® 50, soundproofing for floor.

WORLDWIDE REFERENCES



CIFCO - COVID HOSPITAL

 San Salvador, El Salvador

 2020

2.500 m²

Emufal Primer, Morterplis FPV 5Kg GRIS, waterproofing system for roofs.



AL QODS CLINIC



Fez, Morocco
2017

580 m²

Soprapote, Elastophène® Flam 180-25, Elastophène® Flam 25, Rooftex 150 geotextile, **XPS SL 40** insulation, inverted waterproofing system under protection.

100 ml

Soprapote, Sopralène® Flam S 180-35 (2 layers), bituminous waterproofing system for upstands.



N'DJAMENA MODERN HOSPITAL



N'Djamena, Chad
2014

500 kg

Alsan®410, liquid waterproofing system under tiles for wet rooms.

WORLDWIDE REFERENCES



INTERNATIONAL UNIVERSITY HOSPITAL CHEIKH KHALIFA ZAID

 Casablanca, Morocco
2012-2013

25.000 m²

Primer, **Elastophène® Flam S70-25**, **Elastophène® Flam 25**, geotextile, **XPS** insulation, geotextile, inverted waterproofing system under protection.

Primer, **Elastophène® Flam 25**, **Sopralène® Flam Jardin Cap**, waterproofing system for planters.



TAAONE HOSPITAL

 Piraé, Tahiti
2006

12.000 m²

Sopradère®, **Coltack®** adhesive, PSE insulation, **Soprastick® SI**, **Sopralène® Flam 180 AR**, bituminous waterproofing system for roofs.



TXAGORRITXU UNIVERSITY HOSPITAL CENTRE

 Vitoria, Spain
2019

8.000 m²

Morterpas SBS FV 4kg, Morterpas SBS FP 4,8 kg, XPS SL 40
insulation, inverted waterproofing system under protection.




NURSING SCHOOL OF THE SAN JOSÉ HOSPITAL

 Monterrey Nuevo León, Mexico

Sopralène® Flam 180 GR green, bituminous waterproofing system for green roofs.



ACIBADEM HOSPITAL

 Istanbul, Turkey
2015


25.000 m²

Colphène® BSW waterproofing system for foundation and foundation walls.

photo credit : imperior Asbitra



PARKLAND MEMORIAL HOSPITAL

 Dallas, Texas, USA

Vapor barrier, **Sopraboard®**, **Sopralène® Flam 180**, **Soprastar™ Flam**, bituminous reflective waterproofing system for roofs.

WORLDWIDE REFERENCES



SUNAT CENTRAL LABORATORY

 Lima, Peru

3.055 m²

Elastophène® Flam 180-25, Sopralène® Flam 40 AR, Soprastar® Flam bituminous reflective waterproofing system for roofs.
Alsan® Flashing, Alsan® RS reinforcement, liquid waterproofing system for upstands.



photo credit : Alcalá hoy

QUIRON HOSPITAL

 Torrejón de Ardoz, Spain
2019

700 m²
Stratec® II, roof underlayer.



photo credit : Isanidad



TAIBA CLINIC

 Fez, Morocco
2017

750 m²
Soprapote, Elastophène® Flam 180-25, Elastophène® Flam 25, Rooftex 200 geotextile, **XPS SL 40** insulation, inverted waterproofing system under protection.

160 ml
Soprapote, Sopralène® Flam S 180-35 (2 layers), bituminous waterproofing system for upstands.



WORLDWIDE REFERENCES



ALIBOURI HOSPITAL

 Parakou, Benin
2020

3.900 m²

Soprastick® SI Unilay AR, bituminous waterproofing system for roofs.



35

YANTAI YUHUANGDING HOSPITAL



Shandong Province, China,
2012

7.000 m²

Sopralène® Flam Jardin Cap, bituminous waterproofing membrane for green roofs.



JOHN R. OISHEI CHILDREN'S HOSPITAL

 Buffalo, New York, USA
2017

Sopraseal® Xpress G boards air and vapor barrier, **Sopraseal® Xpress G Screws**, **Sopraseal® Stick 1100T** self-adhesive tape for board joints.



ATASEHIR ACIBADEM HOSPITAL

 Istanbul, Turkey
2017

25.000 m²

Colphène® BSW waterproofing system for foundation and foundation walls.

20.000 m²

Sopralène® Flam Bond, bituminous waterproofing system for terraces.





RHENA CLINIC

 Strasbourg, France
2017

6.100 m²

Bituminous waterproofing system under gravel and 200 mm PUR insulation.

3.400 m²

Sopranature® Toundra pre-cultivated rolls.



QUIRON HOSPITAL

 Pozuelo de Alarcón, Spain
2018

750 m²

Emufal primer, **Texself M**, **Drentex Impact 100**, bituminous waterproofing system.



SOPREMA at your service

Looking for a sales contact in order to discuss a future project or a project that is under way? Any questions about the installation of our product range?

Contact SOPREMA Export department!

Tel.: **+33 (0)3 88 79 84 84**

Email: **export@soprema.com**

Find all the information on www.soprema.com

