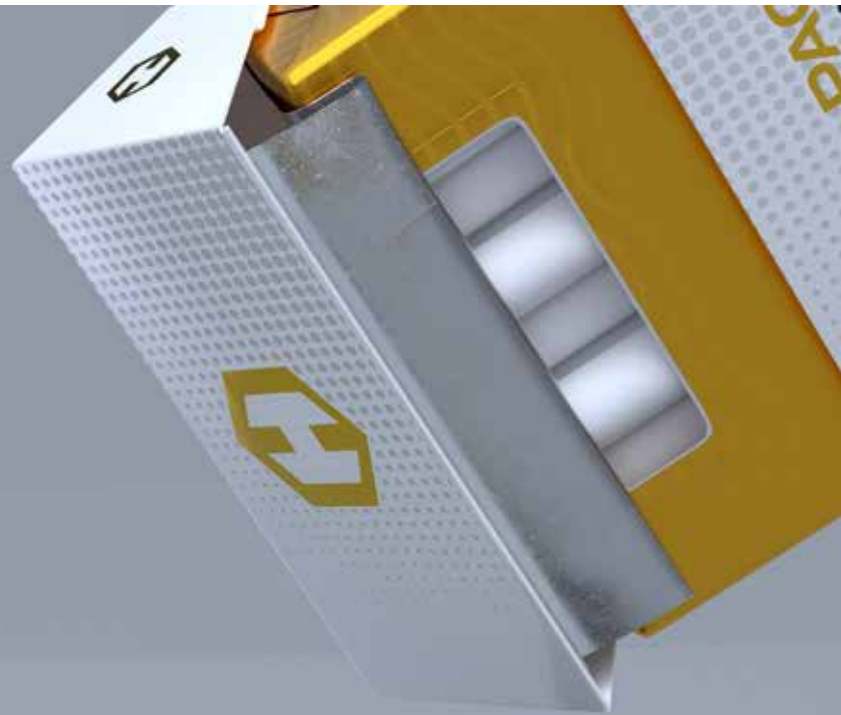


# Inner Liners

## Recloseable Inner Liners



- Cigarettes taste fresher for longer
- New point of communication with the consumer



use our imagination...

# Inner Liners

## Recloseable Inner Liners

### Manual Opening



The consumer is able to open and reclose the pack manually. Options for brand communication on the label and inner liner.

### Automatic Opening



The Label is attached to the hinge lid and opens with the pack providing smart pack opening. This is in line with regional Tobacco Product legislation.

### CCL Label Capabilities

Labels allow controlled and smooth opening	Label adhesive and inner liner film surface designed for perfect interaction
No deterioration of pack opening due to ageing	No adhesive residue on pack/inner liner

## Overwrapper

- Wide-Sealable Films for very high speed performance
- Extensive application experience
- Integrated working partnerships

## Flow Wrapper

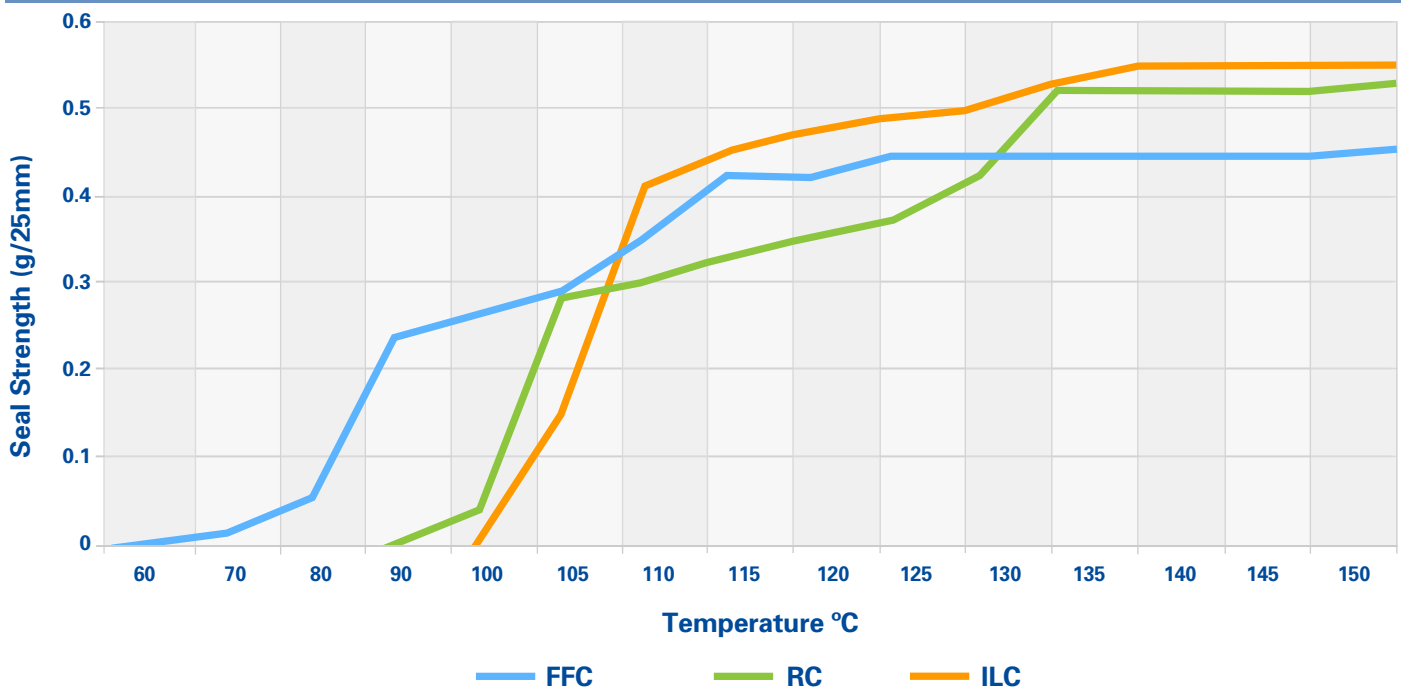
- Global technical support
- Extensive R&D capabilities and in-house testing

## Film Options

Grade	Micron	Uncoated	Coated	Metallised Possible	Induction Sealing (if AL in Laminate on GD XW)	Heat Sealing	Printable	Label Adhesion Tested	Machine
ILC	15, 20	✓		✓	✓	✓	✓	✓	All/OW
RC	20, 25		✓	✓	✓	✓	✓	✓	OW
FFC	20		✓		✓	✓	✓	N/A	B/B

OW – Overwrap B/B - Flow wrapper

## Typical Heat Sealing Performance





**Disclaimer:** Innovia Films or any of its affiliated companies (hereinafter 'Innovia Films') declines any liability with respect to the use made by any third party of the information contained herein. The information contained herein represents Innovia Films' best knowledge thereon without constituting any express or implied guarantee or warranty of any kind (including, but not limited to, the accuracy, the completeness or relevance of the data set out herein). Innovia Films is the sole owner or authorised user of the intellectual property rights relating to the information communicated. The information relating to the use of the products is given for information purposes only. No guarantee or warranty is provided that the product is adapted to the client's specific use. The client should perform his own tests to determine the suitability for a particular purpose. The final choice of use of a product remains the sole responsibility of the client.

**Regional Offices:**

Europe (UK) Tel +44 16973 42281  
 Americas (USA) Tel +1 877 822 3456  
 Asia-Pacific (Aus) Tel +61 3 9303 0600

[www.innoviafilms.com](http://www.innoviafilms.com)  
 email: [tobacco@innoviafilms.com](mailto:tobacco@innoviafilms.com)  
 ™ Trademark of Innovia Films



use our imagination...

