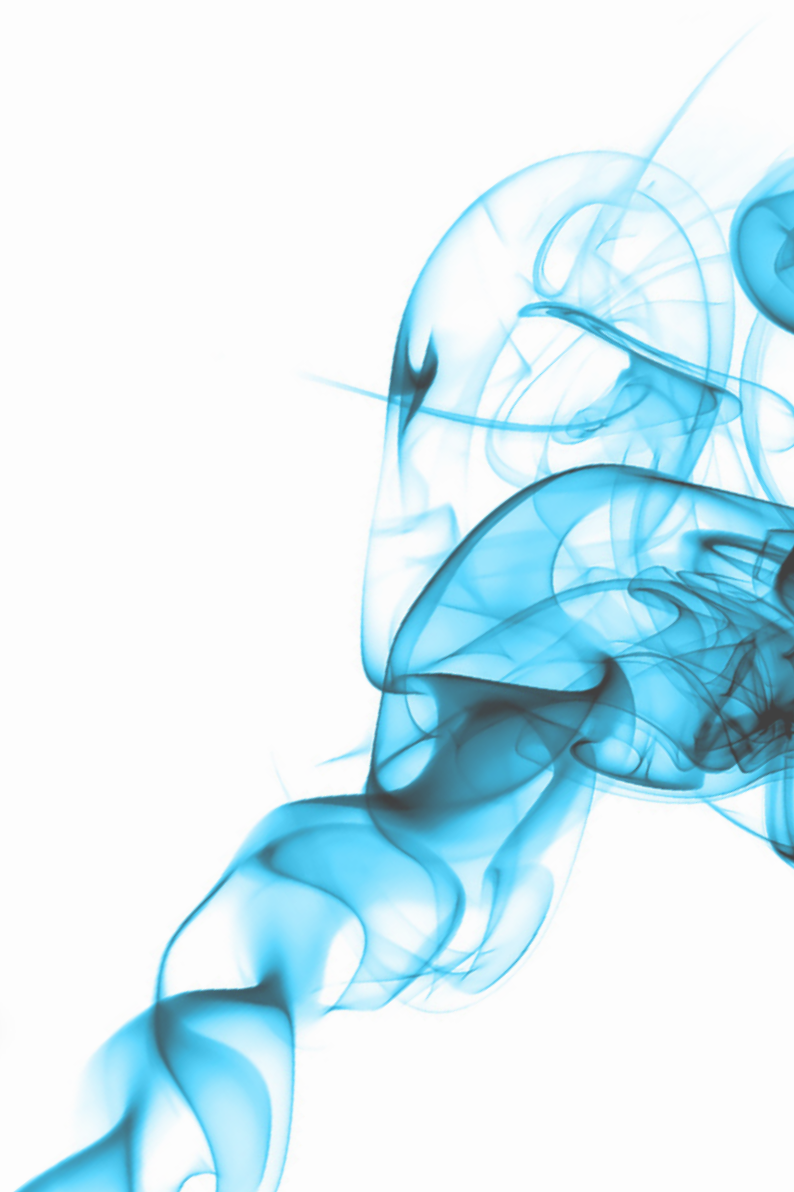


## CC22 ex Transmitter

# For flammable gases and vapours in Ex zone 2



# CC22 ex Transmitter

For flammable gases and vapors in Ex zone 2



Offering the CC22 ex, GfG provides a cost-effective solution with explosion protection for monitoring flammable gases and vapors that nevertheless meets the highest requirements.

## Innovative and functional

The CC22 ex operates on the principle of catalytic combustion, a proven measurement method for monitoring combustible gases. It is also suitable for use in Zone 2 hazardous areas.

A smart electronic system handles the processing of the measured value output as well as voltage stabilization and temperature compensation. The long service life of the sensors reduces operating costs.

## Communicates digitally using Modbus protocol

The measured values are transmitted digitally via an RS-485 Modbus interface. Especially in combination with the GMA22-M controller, the CC22 ex meets the latest legal requirements and forms a space-

saving, high-performance solution for a wide range of requirement profiles.

## Smart measured value processing

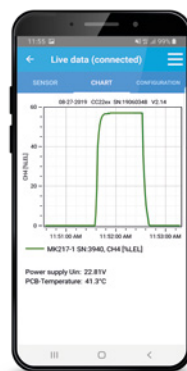
Industry-wide, the trend is towards smart units, such as the CC22 ex, whose integrated electronics process the data already at the measuring point. The detection of malfunctions and information on the next service or maintenance appointment are just some of the benefits that result.

If a CC22 ex is used in an area where it is not possible to take smartphones with you, adjustment and calibration can alternatively be carried out using a magnetic pen or via the GMA22 controller without having to open the transmitter.

GfG's smart, plug&play sensors are equally service-friendly. They can be easily replaced and are automatically recognized by the transmitter. Thanks in part to the stack effect of the sensor housing, the CC22 ex has one of the fastest response times on the market.

## Remote calibration adapter

To facilitate regular function checks, there is a special remote calibration adapter. It ensures a safe and constant supply of test gas at all times.



Convenient service via app

## Easy to service thanks to app\* and smart sensors

Configuration, adjustment and calibration of the CC22 ex are conveniently performed via app using the infrared interface. This way, the service technician always has all information about the transmitter at hand and the adjustment of settings is done with one click.

\* Use only by service technicians



CC22 ex and GMA22-M controller

## CC22 ex Technical Data:

<b>Gases:</b>	Combustible gases/vapors such as H <sub>2</sub> , CH <sub>4</sub> , C <sub>3</sub> H <sub>8</sub> , C <sub>9</sub> H <sub>20</sub> , C <sub>2</sub> H <sub>6</sub> O, ... and ammonia	<b>Lifetime of the sensor:</b>	> 5 years <sup>2</sup>	<b>Housing:</b>	Plastic
<b>Measuring principle:</b>	Catalytic combustion (CC)	<b>Response time:</b>	t <sub>90</sub> ≤ 9 s <sup>3</sup>	<b>Protection class:</b>	IP65
<b>Measuring ranges:</b>	0 to 100 % LEL 0 to 4 vol% <sup>1</sup>	<b>Temperature:</b>	-20 to +55 °C <sup>4</sup>	<b>Weight:</b>	298 g
<b>Gas supply:</b>	Diffusion or gassing per calibration adapter	<b>Humidity:</b>	5 to 90 % r. h. <sup>4</sup>	<b>Dimensions:</b>	103 x 147 x 52 mm (W x H x D)
		<b>Air pressure:</b>	80 to 120 kPa <sup>4</sup>	<b>Approvals / Certifications:</b>	
		<b>Output signal:</b>	RS-485 (Modbus)	Type of protection:	Ⓜ II 3G Ex nA db IIC T4 Gc
		<b>Power supply:</b>	12 to 30 V DC		-20 °C ≤ Ta ≤ +55 °C

<sup>1</sup> For ammonia only, <sup>2</sup> Depending on operating conditions, <sup>3</sup> Depending on the gas type, <sup>4</sup> Sensor dependent



GfG Gas Detection UK Ltd

Unit 8 | Griggs Business Centre | Tel.: +44 (0) 1376 561463  
West Street | Coggeshall | Fax: +44 (0) 1376 561704  
CO6 1NT | Essex | UK

[www.gfggasdetection.co.uk](http://www.gfggasdetection.co.uk)  
[sales@gfggas.co.uk](mailto:sales@gfggas.co.uk)