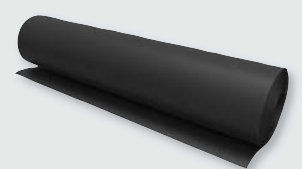
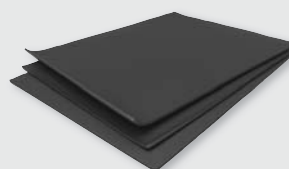
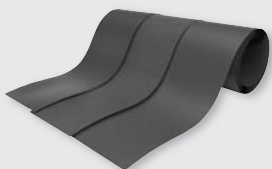




Rubber Strip Cutting Machine

Fully automated cutting system for use with rolls and sheets of rubber



...a lifetime of reliability and support

Rubber Strip Cutting Machine

The Barwell Strip Cutter is a compact and durable, low investment and automated machine for processors needing to produce small batches of rubber strips on a regular basis.

- A quick and automated method of cutting rubber strips from rolls or sheets
- Ideal for small production requirements
- It has significant cost, time and quality advantages over manual methods of cutting
- Easy to operate and maintain

barwell Strip Cutter

Rubber roll and sheet cutting

FEATURES

- Includes a user-friendly PLC with touch screen interface and programmable counter function
- Incorporates the proven Barwell scales-loop feedback system for automatic weight adjustment, helping to reduce material wastage and produce accurate strips with minimal operator intervention
- The machine will cut strips up to a maximum width of 535mm (21") and a maximum thickness of 20mm (0.8") (depending on material type)
- Continuous strips are cut up to lengths of 100mm/4" (50 Hz) or 80mm/3.1" (60 Hz). For lengths above this, the system will default into pulse cut mode, where the length is determined by the servo-drive controlling the feed roller speed

OPTIONS

- Available with extra-long conveyor



ENHANCED SAFETY

Health and safety is a primary concern for those responsible for machine maintenance and operator safety.

Barwell machines are manufactured with safety in mind and are supplied with a number of features to ensure safe operation.

The Strip Cutter includes safety interlocks and a monitoring relay.



APPLICATIONS

The Barwell Strip Cutter is primarily used for loading into multi-cavity moulds and is commonly used to produce blanks to make moulds for the production of:

- O rings
- Washers
- Grommets
- Medical bottle stoppers
- Rubber bushes
- Small anti-vibration mounts
- Rubber bellows
- And many more

SUPPORT

Barwell is committed to providing a lifetime of reliability and support through superior machine quality and expert service.

Due to our many years of experience of understanding rubber production, we are ideally positioned to assist customers to get the best out of their machine.

Our aim is to improve your production quality and increase machine life.

- Technical assistance
- Commissioning and installation
- Preventative maintenance and emergency repair

- Supply of genuine Barwell spares and consumables to ensure optimum performance

barwellSupport 
Advice | Spares | Service



Technical Data Barwell Strip Cutter

barwell Strip Cutter

Rubber roll and sheet cutting



Machine Information	
Strip Cutter	Specification
Dimensions	Length: 1800mm (71") • Width: 1330mm (52") • Height: 1260mm (50")
Weight	805 kg (1775 lbs)
Power Supply	380V 50 Hz 3 Phase and Neutral (transformer available for 220/480V)
Power Consumption	2.2 kW
Air Supply	1/4" BSP Maximum permissible pressure of 70 psi (5 bar)
Cutting Speed	70cm/27.55" (50 Hz) • 84cm/33" (60 Hz)
Cutting System	Single knife • Maximum strip width 535mm (21") • Maximum strip thickness 20mm (0.8")
Control System	Omron PLC with Leadshine servo controller and motor • Weintek HMI 7" touch screen colour operator display
Conveyor	Variable speed take-off conveyor

All data is calculated with the machine being run under recommended operating conditions. It is recommended that tests are conducted during the machine specification stage to ensure that the machine will meet your requirements. Barwell recommends that as much information as possible is given before any purchase to ensure that the most appropriate machine is specified.



Barwell Global Ltd.

Unit 1, 9 Burrel Road, St. Ives,
Cambridgeshire, PE27 3LE United Kingdom

✉ info@barwell.com
☎ +44 (0) 1480 832 860
🌐 www.barwell.com

Barwell Global USA

2868 Westway Drive, Unit E,
Brunswick, Ohio 44212-5661 USA

✉ info@barwellusa.com
☎ +1 330 225 9557
🌐 www.barwellusa.com

barwell

...a lifetime of reliability and support