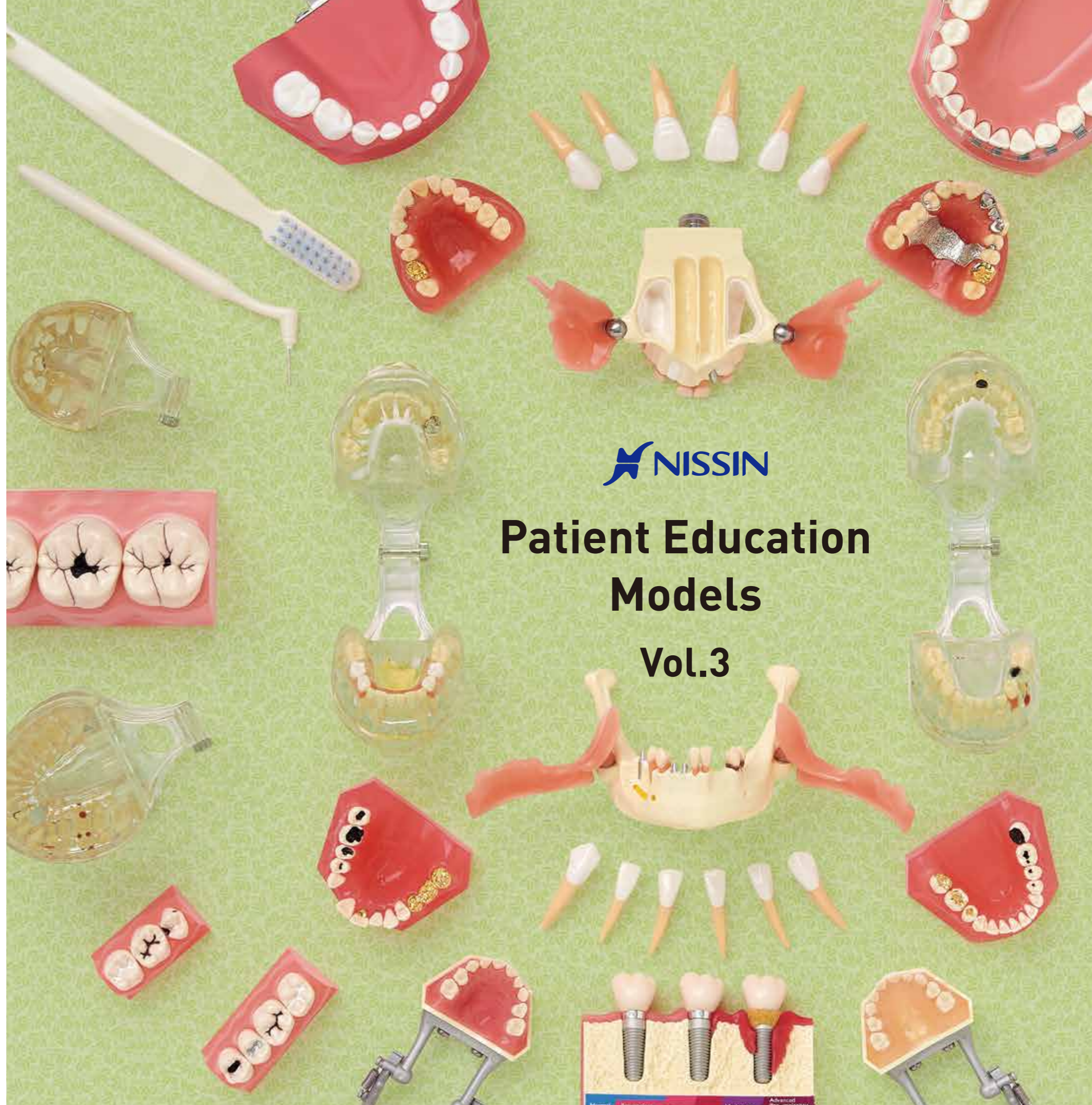


Distributor Contact Information



Patient Education Models

Vol.3



NISSIN DENTAL PRODUCTS INC.
KYOTO JAPAN.

e-mail : info@nissin-dental.net

Kyoto Office / Overseas Division
Kyoto Daiichiseimei Izumiya Bldg. 8F,
513 Akinono-cho, Nakagyo-ku, Kyoto, 604-0847, JAPAN
Tel : +81-75-257-7860
Fax : +81-75-257-7256



YouTube
NISSIN Channel

ONE BY ONE

HANDCRAFTED JAPANESE PRIDE

TABLE OF CONTENTS

● Tooth Disease (TDS) -----	5
● Prosthodontics (PRO) -----	8
● Endodontics (END) -----	10
● Implants (IMP) -----	12
● Periodontics (PER) -----	15
● Orthodontics (ORT) -----	17
● Pediatric Dentistry (PDI) -----	18
● Prevention (STP) -----	19
● Tooth Anatomy (ANA) -----	21
● INDEX -----	22



Each NISSIN model-maker is a Craftsman,
...and an Artist.

Pure Craftsmanship - this is the source of the "Global NISSIN" we take pride in.
Each NISSIN product is created with the "living body" as the ultimate model to follow,
while meticulously shaping customer orders into reality,
making recommendations, and perfecting them one by one.

What is required? - Experience, Instincts, Technique
...Commitment, Insight, Originality and Ingenuity.

Our models are nothing like an industrial product.

Rather, one can say they are closer to an artifact, a work of art created by `genius hands`
...representing the true soul of Japanese Craftsmanship.

■ Dental Notation System

Permanent Teeth (adult teeth)

upper right									upper left								
ADA	1	2	3	4	5	6	7	8	9	10	11	12	13	14	15	16	ADA
FDI	18	17	16	15	14	13	12	11	21	22	23	24	25	26	27	28	FDI
FDI	48	47	46	45	44	43	42	41	31	32	33	34	35	36	37	38	FDI
ADA	32	31	30	29	28	27	26	25	24	23	22	21	20	19	18	17	ADA
lower right									lower left								

Primary Teeth (baby teeth)

upper right						upper left					
ADA	A	B	C	D	E	F	G	H	I	J	ADA
FDI	55	54	53	52	51	61	62	63	64	65	FDI
FDI	85	84	83	82	81	71	72	73	74	75	FDI
ADA	T	S	R	Q	P	O	N	M	L	K	ADA
lower right						lower left					

※Tooth numbers in this catalog are indicated by the FDI (World Dental Federation) dental notation system.

■ How to read NISSIN's Patient Education Model Number

PE - TDS 001

① Training Areas ② Model Category ③ Sequence No.

① Training Areas	
PE-	Patient Education

② Model Category	
TDS	Tooth Disease
PRO	Prosthodontics
END	Endodontics
IMP	Implants
PER	Periodontics
ORT	Orthodontics
PDI	Pediatric Dentistry
STP	Prevention
ANA	Tooth Anatomy

③ Sequence No.	
	000
	~
	999

Disclaimer

- Due to product improvements, product specifications and design may change without prior notice.
- Products in this catalog may be discontinued without prior notice.
- Colors of products shown in the catalog may differ from the actual product due to printing quality.
- Products in this catalog are sold through distributors in each country. For information on a distributor in your country please contact NISSIN DENTAL PRODUCTS, INC.
- Unauthorized reprinting and/or duplicating of any text, photographs and illustrations shown in this catalog are strictly prohibited.

TOOTH DISEASE (TDS)

TRANSPARENT DISEASE MODEL



PE-TDS001

Features

- Transparent acrylic resin model
- Demonstrates caries, fractured root, and pathologies of apical periodontium

Purpose

- Allows easy comparison of diseased side with the healthy side
- Ideal for education with the use of x-ray pictures

TRANSPARENT DISEASE MODEL (PRIMARY)



PE-TDS002

Features

- Transparent acrylic resin model simulating a 6-year-old dentition
- Demonstrates ectopic eruption at the growing process of mixed dentition

Purpose

- For explaining permanent and primary teeth relationship at the mixed dentition stage
- For explaining apical lesion
- Ideal for education with the use of x-ray pictures

CARIES STUDY MODEL



PE-TDS003

Features

- Left quadrant demonstrates 4 stages of caries conditions
- Right quadrant shows a healthy condition

Purpose

- For comparing and explaining healthy condition and caries condition
- Brushing demonstration

TOOTH DISEASE (TDS)

PROSTHODONTIC PROCEDURE MODEL



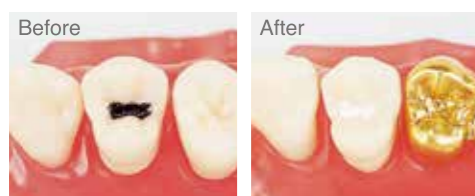
PE-TDS004

Features

- The left quadrant shows pre-treatment condition
- The right quadrant shows post-treatment condition with restorations
- Demonstrates prosthesis case on the upper jaw and filling on the lower jaw

Purpose

- For explaining various treatment methods depending on different caries conditions
- For demonstration of cleaning missing teeth, brushing and flossing



Resin Filling



Bridge



Inlay



Implant

CARIES PROGRESSION MODEL



PE-TDS005

Features

- Caries illustration model showing CO ~ C4 progression stages
- Each tooth represents each stage to allow easy comparison of stages
- Wedge-shaped defect, secondary caries and root caries conditions are represented
- Pulpitis and apical lesion conditions are represented to illustrate the damaging impact of dental caries

Purpose

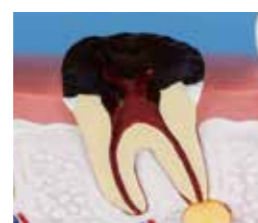
- To explain various stages of caries progression and conditions
- Can be used in conjunction with patient's x-ray images and pictures to explain the situation and offer treatment methods



CO (wedge-shaped defect)



C2 (to dentin)



C4 (to nerve)



Secondary Caries

4x SIZE CARIES STUDY MODEL



PE-TDS006

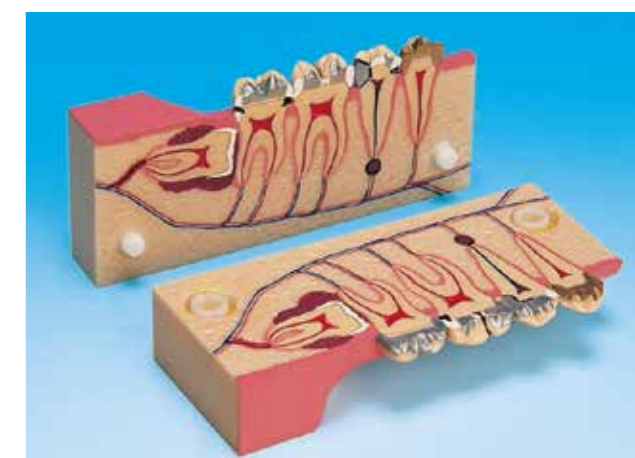
Features

- 4x size model
- Demonstrates 3 stages of caries progression (C1 to C3)
- #16 molar is vertically dividable to show internal caries condition

Purpose

- For explaining the impact of C1 to C3 caries on the dental pulp
- Can be used in conjunction with patient's x-ray images and pictures to explain the situation

MOLAR CROSS SECTION STUDY MODEL



PE-TDS007

Features

- 2.5x size model
- Vertically divided cross-section model of the lower right molar region
- Allows occlusal, buccal and inside view of the molars showing caries and apical lesion conditions

Purpose

- For explaining impacted 3rd molar condition
- For explaining secondary caries after fitting prosthetic restoration

MANDIBULAR STUDY MODEL



PE-TDS008

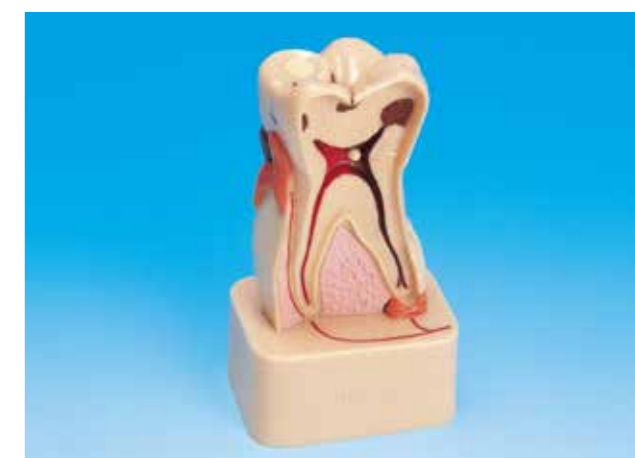
Features

- Mandibular quadrant model with hinged buccal plate
- Demonstrates impaction, abscess and caries conditions

Purpose

- For explaining caries condition and apical lesion on lower teeth
- Ideal with the use of x-ray pictures

4x SIZE PATHOLOGICAL STUDY MODEL



PE-TDS009

Features

- Vertically divided cross-section tooth model (#46)
- Demonstrates various pathologies (caries, dental calculus, dental attrition, etc.)

Purpose

- For explaining the impact of caries on the dental pulp, stages of caries progression in the dentin, and dental attrition condition

PROSTHODONTICS (PRO)

DENTAL RESTORATION/PROSTHESIS STUDY MODEL



PE-PRO001

Features

- Porcelain Inlay (#17), Full Gold Crown (#16), PFM Crown (#15), PFM 3-unit Bridge (#11~#13), Post and Core (#11), Porcelain Veneer (#21), Implant Restoration (#22), Targis All-ceramic Bridge (#23~#25), All-ceramic Crown (#26), Porcelain Onlay (#27)
- All restorations are fully removable
- Transparent window in #22 gingival area to show implant structure

Purpose

- Explain and suggest various types of crown & bridge restorations as well as implant restoration to patients



INLAY/CROWN COMPARISON MODEL



PE-PRO012

Features

- Transparent base, flexible silicone root and pulp
- Cross-sectioned molar with fractures and infection in the pulp horn underneath the inlay
- Cross-sectioned prepared molar with porcelain crown

Purpose

- Show and explain to patients the connection between inlay restorations and tooth fracture, and the possible formation of pulpitis underneath the inlay as a result of the fracture
- Show and explain to patients the alternative of choosing a full porcelain crown instead of an inlay, depending on the circumstance, to avoid the risk of tooth fracture



DENTAL RESTORATION/PROSTHESIS STUDY MODEL



PE-PRO002

Features

- PFM Crown with Ceka Connecting Unit (#17), PFM 3-unit Bridge (#11~#13), Post and Core (#11), Porcelain Veneer (#21), Maryland Bridge (#21~#23), Metal Connecting Unit for Partial Denture (#24), Semi-precision Keyway for Partial Denture (#26), Cast Gold Crown (#26), Porcelain Inlay (#27), Partial Denture

Purpose

- Explain and suggest various types of crown & bridge restorations as well as partial denture to patients.



ENDODONTICS (END)

ENDODONTIC PROCEDURE MODEL



PE-END001

■ Features

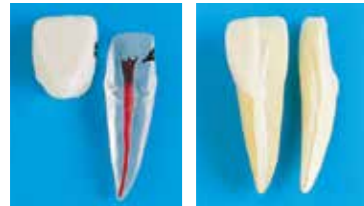
- 5-stage model for visual demonstration of endodontic treatment steps
- Sagittally sectioned teeth with removable parts
- The teeth shows the following conditions: normal condition, caries and pulpitis, pulp extirpation, canal enlargement, canal preparation, canal filling, post & core PFM restoration
- Transparent base and root allows view of the pulp cavity condition

● Purpose

- To help patients visualize the steps and procedures for root canal treatment
- Can be used in conjunction with patient's x-ray images and pictures to explain the situation

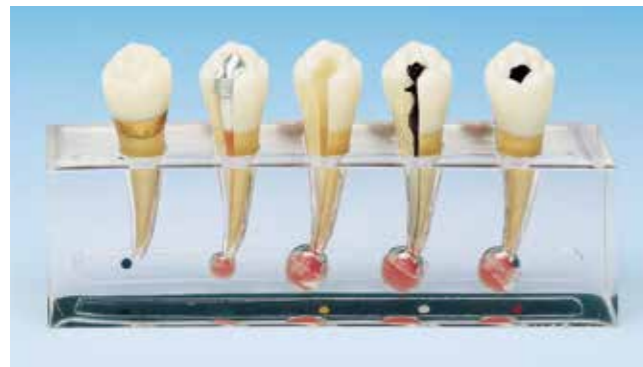


Crown Restoration Root Canal Filling Root Canal Treatment



Caries & Pulpitis Healthy Tooth

ENDODONTIC PROCEDURE MODEL



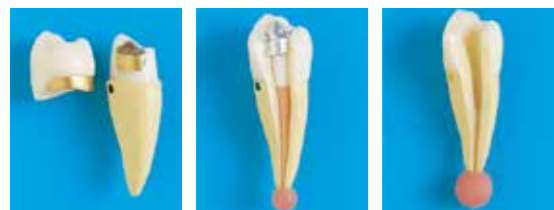
PE-END002

■ Features

- 5-stage model for visual demonstration of endodontic treatment steps
- Teeth with removable parts
- Transparent base and root allows view of the pulp cavity and apical lesion condition

● Purpose

- To help patients visualize the steps and procedures for root canal treatment as well as the healing process of apical disease
- Can be used in conjunction with patient's x-ray images and pictures to explain the situation



Crown Restoration Root Canal Filling Root Canal Treatment



Contamination of root canal Apical Lesion

ENDODONTIC PROCEDURE MODEL



PE-END003

■ Features

- 4-stage model showing caries/lesion up to the final endodontic treatment and restoration
- Transparent base shows gradually diminishing apical lesion
- 4th stage molar and crown are removable

● Purpose

- To help patients visualize the steps and procedures for root canal treatment
- Can be used in conjunction with patient's x-ray images and pictures to explain the situation



IMPLANTS (IMP)

IMPLANT MODEL

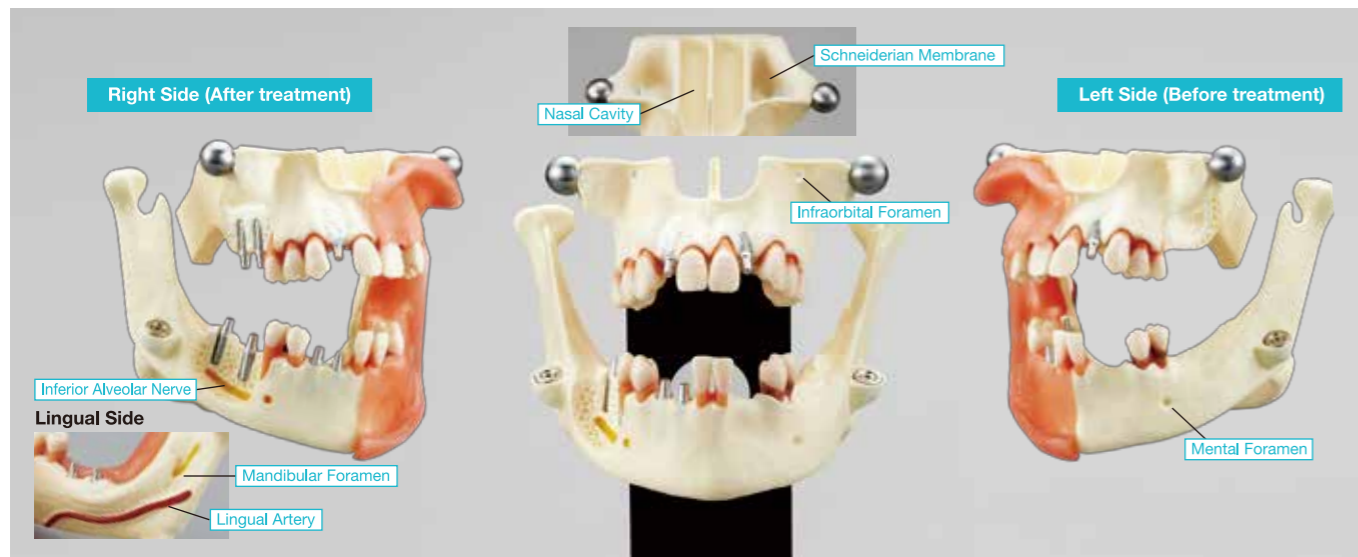
PE-IMP007

Features

- When providing implant counseling as part of the treatment planning, this model helps explain to patients the procedures related to and risks associated with implant treatment
- Condition underneath the removable gingiva on the left side of the model reveals the pre-treatment condition, while the right side shows the treated condition associated with implant placement such as GBR, sinus lift and ridge expansion
- The model includes various anatomical features such as the inferior alveolar nerve, mental foramen, lingual artery and Schneiderian membrane



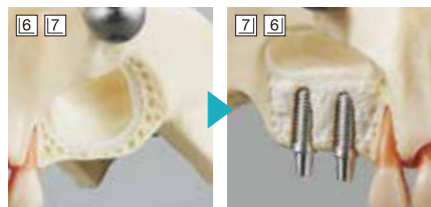
Description of Main Parts



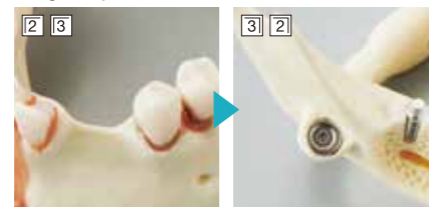
GBR



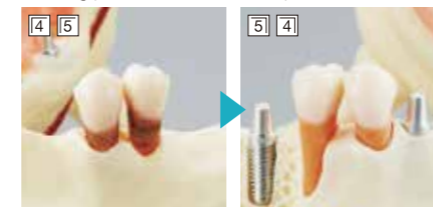
Sinus Lift



Ridge Expansion



Scaling(Periodontal disease)



IMPLANT MODEL

PE-IMP001

Features

- 2.5x size enlarged lower posterior region
- Removable gingiva to expose the roots and implant fixture
- Both natural teeth (premolar and molar) are removable (crown and root)
- Removable bridge
- Removable implant crown and abutment

Purpose

- Explain the risks and problems of neglecting missing tooth to patients
- Compare and explain the features, advantages and disadvantages of implants vs. bridge
- Recommend implant or bridge treatment options to patients



IMPLANT MODEL

PE-IMP002

Features

- Dental prosthesis (partial denture) on the lower right molar region
- Implants on the lower left molar region
- Transparent jaw allows view of the anatomical roots

Purpose

- For explaining the difference between dental prosthesis and implants
- For explaining the maintenance and cleaning methods for dental prosthesis and implants



IMPLANTS (IMP)

IMPLANT MODEL



PE-IMP003

Features

- Transparent base to show implant fixtures and bridge abutment
- Implant on tooth #41 and #46
- 3-unit bridge on #35~#37

Purpose

- Show and explain the various features of implants and bridges, and compare the difference (advantages and disadvantages) between the two options
- To offer the appropriate treatment to patients



Implant

Implant

3-unit bridge

PERI-IMPLANT DISEASE MODEL



PE-IMP004

Features

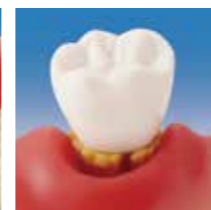
- Cross-sectioned model showing peri-implant mucositis and peri-implantitis from early to advance

Purpose

- Before the implant placement: To help patient understand the risks of peri-implant disease and the importance of maintenance after the placement
- After the placement: To demonstrate/explain how to maintain (brushing or flossing) the implant to achieve the longer life of implant
- After the placement: Showing the inflammation of subgingival area by removing crown encourages patients to come for routine check-up at the clinic
- For peri-implantitis patients: To explain that the treatment intervention in earlier stage increases the possibility for full recovery



Mobility



Normal

Peri-implant Mucositis / Early Peri-implantitis

Moderate Peri-implantitis / Advanced Peri-implantitis

PERIODONTICS (PER)

PERIODONTAL DISEASE MODEL



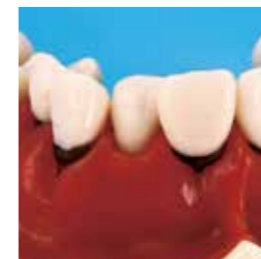
PE-PER001

Features

- Peelable buccal/lingual gingiva and transparent jaw allows excellent view of recessed alveolar bone condition, exposed roots and subgingival calculus
- Anatomically rooted teeth with calculus

Purpose

- For explaining periodontal disease condition to patients
- Brushing demonstration for gingivitis and periodontitis
- Explain subgingival calculus condition
- Allows effective patient education by comparing with x-ray pictures



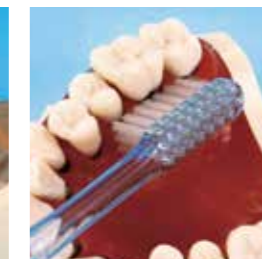
Periodontal pockets & clefts



Inflamed gingiva & gingival recession



Alveolar bone resorption & subgingival calculus



Brushing demonstration

PERIODONTAL DISEASE MODEL



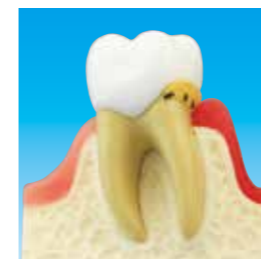
PE-PER010

Features

- Cross-sectioned model showing normal periodontal condition → advanced periodontitis and bone resorption in a series of 5 stages
- Model also shows a tooth with occlusal trauma on the far right

Purpose

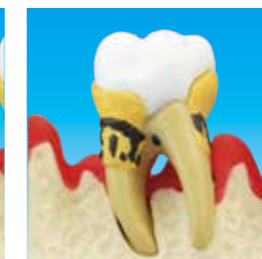
- Explains early → severe stages of periodontal disease
- Buccal side: shows the gradual worsening of the actual periodontal condition going on inside
- Lingual side: shows the outward appearance of the oral cavity, and explain that detection is only possible with pocket probing and x-rays



Comparison of healthy condition and gingivitis



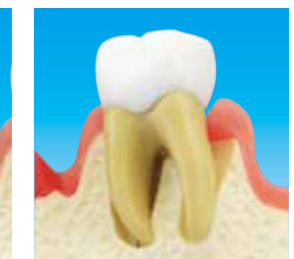
Early periodontitis



Moderate periodontitis



Advanced periodontitis



Occlusal Trauma

PERIODONTICS (PER)

PERIODONTAL DISEASE MODEL



PE-PER003

■ Features

- Peelable recessed gingiva allows view of calculus, exposed roots and bone resorption
- Anatomically rooted teeth with calculus
- Missing lower left 1st molar area causing supereruption of upper left 1st molar resulting in elongated tooth condition

● Purpose

- Explain severe periodontal disease and subgingival calculus to patients
- Brushing demonstration for periodontitis

PERIODONTAL DISEASE MODEL



PE-PER004

■ Features

- Transparent jaw and gingiva to show the roots and impacted tooth
- Missing tooth condition on lower right premolar (#44)
- Horizontally impacted 3rd molar (#38) on lower left posterior region
- Gingival recession condition exposing dental calculus and roots
- Soft and flexible gingiva can be peeled back to see the periodontal condition

● Purpose

- To show and explain periodontal disease conditions (gingival recession, bone resorption, calculus deposit) to patients
- To show and explain the adverse effects of horizontally impacted wisdom tooth as well as missing tooth

PATHOLOGICAL STUDY MODEL



PE-PER005

■ Features

- Inflamed gingiva with recession and tooth brushing abrasion on right quadrant shows view of dental calculus and exposed roots
- Normal condition with healthy gingiva shown on left quadrant

● Purpose

- For explaining dental root exposure as a result of gingival retraction
- Allows easy comparison of diseased side with healthy side

PERIODONTAL DISEASE MODEL



PE-PER006

■ Features

- Inflamed gingiva with calculus and calculus deposit

● Purpose

- For educating brushing for gingivitis and periodontitis conditions
- Explain calculus deposit condition

TOOTH BRUSHING DEMONSTRATION MODEL



PE-ORT002

■ Features

- Adult tooth brushing instruction model with permanently affixed orthodontic brackets and arch wire
- Left side shows conventional metal brackets
- Right side comes with clear brackets with colored elastic bands (upper) and clear elastic bands (lower)
- Assorted interchangeable spare elastic bands (colored and clear) allow different color combinations
- 2 times the natural size
- Lightweight construction and easy to hold

● Purpose

- Proper brushing demonstration to patients that have orthodontic restorations
- Compare and explain the features of each bracket and ligature type
- Ideal for group education

TOOTH BRUSHING DEMONSTRATION MODEL



PE-STP004 (Toothbrush)

■ Description

- Toothbrush for PE-ORT001

PE-STP005 (Interdental brush)

■ Description

- Interdental brush for PE-ORT001



PEDIATRIC DENTISTRY (PDI)

DEVELOPMENTAL STUDY MODEL



PE-PDI001 (Age 3)

Features

- Transparent model demonstrating primary and permanent dentition in a correct eruption pattern
- Simulates a 3-year-old dentition
- Growth condition is easily visible from any direction/angle

Purpose

- Demonstration with x-ray pictures enables effective education of brushing for primary dentition.

DEVELOPMENTAL STUDY MODEL



PE-PDI002 (Age 9)

Features

- Transparent model demonstrating permanent and primary dentition in a correct eruption pattern
- Simulates a 9-year-old dentition
- Growth condition is easily visible from any direction/angle

Purpose

- Brushing education for mixed dentition
- Ideal for education with the combined use of x-ray pictures

DEVELOPMENTAL STUDY MODEL



PE-PDI003 (Age 12)

Features

- 12-year-old dentition model demonstrating pre-eruption permanent teeth condition
- Crown & loop and pedo denture are attached for space maintenance to prevent premature tooth loss

Purpose

- For explaining procedures taken after early loss of deciduous molar tooth
- Demonstration with x-ray pictures enables effective brushing education for mixed dentition

DEVELOPMENTAL STUDY MODEL



PE-PDI004 (Age 3&6)

Features

- Demonstrates a 6-year-old dentition on the right quadrant and a 3-year-old dentition on the left quadrant
- Removable pink silicone gingiva exposes the normal teeth development condition underneath

Purpose

- Brushing education for 6-year-old molars
- Demonstration with x-ray pictures enables effective brushing education for mixed dentition

DEVELOPMENTAL STUDY MODEL



PE-PDI005 (Age 5&9)

Features

- Demonstrates a 9-year-old dentition on the right quadrant and a 5-year-old dentition on the left quadrant
- Removable pink silicone gingiva exposes the normal teeth development condition underneath

Purpose

- Brushing education for 9-year-old molars
- Demonstration with x-ray pictures enables effective brushing education for mixed dentition

DEVELOPMENTAL STUDY MODEL



PE-PDI006 (Age 9&12)

Features

- Demonstrates a 12-year-old dentition on the right quadrant and a 9-year-old dentition on the left quadrant
- Removable pink silicone gingiva exposes the normal teeth development condition underneath

Purpose

- Demonstration with x-ray pictures enables effective brushing education for mixed dentition

PREVENTION (STP)

TOOTH BRUSHING DEMONSTRATION MODEL



PE-STP001

Features

- Tooth brushing model for individual education and training
- Half-erupted tooth and crowded teeth conditions are represented
- Implant and bridge restorations on the lower right posterior region

Purpose

- To demonstrate and instruct brushing techniques for various abnormal teeth alignment conditions
- Teach proper brushing techniques for bridges and implants

TOOTH BRUSHING DEMONSTRATION MODEL



PE-STP002 (Permanent dentition)

Features

- Adult tooth brushing instruction model with removable teeth (#14 & #16)
- 2 times the natural size
- Lightweight construction
- Dental floss included

Purpose

- To demonstrate normal tooth brushing, interdental brushing and dental flossing
- Ideal for group education

- Tooth numbers indicated above follow the FDI Tooth Numbering System.
- Toothbrush sold separately.



Dental floss



Interdental brushing



Brushing



#14 and #16 teeth are removable.

TOOTH BRUSHING DEMONSTRATION MODEL



PE-STP004

Description

- Toothbrush for PE-STP002, PE-STP003

PE-STP005

Description

- Interdental brush for PE-STP002, PE-STP003

PREVENTION (STP)

TOOTH BRUSHING DEMONSTRATION MODEL



PE-STP003

Features

- Pediatric tooth brushing instruction model with primary dentition
- 2.5 times the natural size
- Lightweight construction

Purpose

- To demonstrate normal tooth brushing, interdental brushing and dental flossing
- Ideal for group education

** Toothbrush sold separately.*

PROSTHESIS CARE AND BRUSHING MODEL



PE-STP011

Features

- Removable partial denture and 3-unit implant bridge
- 2 times the natural size with tongue
- Lightweight construction

Purpose

- Proper brushing demonstration to patients that have partial dentures and implant restorations

CARIES PREVENTION MODEL



PE-STP007

Features

- 2x size model
- Upper posterior teeth show caries metal inlay restoration as well as sealant for caries prevention

Purpose

- For explaining sealant application to developmental groove areas for the purpose of caries prevention
- For explaining progressed caries and treatment by metal inlay restoration

CARIES PREVENTION MODEL



PE-STP008

Features

- Various caries conditions shown on the upper right premolar and molar
- Sealant treatment demonstrated on the healthy second molar

Purpose

- Explain the use and effectiveness of sealants for caries treatment and prevention

TOOTH ANATOMY (ANA)

STUDY MODEL WITH REMOVABLE TEETH



PE-ANA001 (Transparent pink silicone gingiva)

PE-ANA002 (Pink silicone gingiva)

Features

- Full upper and lower jaws with 28 anatomically rooted teeth (transparent gingiva on PE-ANA001 allows view of roots)
- Soft silicone gingiva allows easy removal and replacement of teeth

Purpose

- Personal tooth brushing training
- To show and explain tooth form

STUDY MODEL WITH REMOVABLE TEETH (PRIMARY)



PE-ANA003 (Transparent pink silicone gingiva)

PE-ANA004 (Pink silicone gingiva)

Features

- Full upper and lower jaws with naturally colored anatomically rooted primary teeth (transparent gingiva on PE-ANA003 allows view of roots)
- Soft silicone gingiva allows easy removal and replacement of teeth

Purpose

- Tooth brushing education for pediatric dentistry
- To show and explain tooth form

TRANSPARENT JAW MODEL WITH TEETH



PE-ANA005

Features

- Transparent model demonstrating mixed dentition
- Allows patient education for treatment and brushing
- Effective with x-ray pictures

Purpose

- For self brushing education
- For explaining how the occlusal pressure affects the tooth root

WHITEBOARD FOR PATIENT EDUCATION



PE-ANA007 (Posterior)

Features

- Writable whiteboard describing teeth and parodontium of the posterior region
- Blue and red markers included

PE-ANA008 (Anterior)

Features

- Writable whiteboard describing teeth and parodontium of the anterior region
- Blue and red markers included

Purpose

- Ideal for suggesting treatment planning to patients during visits

INDEX

PE-ANA001 [i21D-400G]	21	PE-PER003 [P15D-TRM.653]	16
PE-ANA002 [i2D-400G]	21	PE-PER004 [P15D-TRM.205]	16
PE-ANA003 [i31D-400D]	21	PE-PER005 [P2D-001]	16
PE-ANA004 [i3D-400D]	21	PE-PER006 [P15D-004B]	16
PE-ANA005 [P12P-SB1]	21	PE-PRO001 [P9-TRM.348]	8
PE-ANA007 [P13-TR200]	21	PE-PRO002 [P22-TRM.98]	8
PE-ANA008 [P13-TR200A]	21	PE-PRO012 [P13-TRM.447A(PC)]	9
PE-END001 [P23-END.1]	10	PE-STP001 [P3D-801]	19
PE-END002 [P23-END.2]	10	PE-STP002 [P3B-705]	19
PE-END003 [P23-END.4]	11	PE-STP003 [P3B-703]	20
PE-IMP001 [P9-TRM.592]	13	PE-STP004 [P3-TB]	17, 19
PE-IMP002 [P9-3100]	13	PE-STP005 [P3-IDB]	17, 19
PE-IMP003 [P9-TRM.548]	14	PE-STP007 [P23-TR203]	20
PE-IMP004	14	PE-STP008 [F8-TRM.126]	20
PE-IMP007	12	PE-STP011	20
PE-ORT002	17	PE-TDS001 [P12P-100M]	5
PE-PDI001 [P12P-100B]	18	PE-TDS002 [P12P-100R]	5
PE-PDI002 [P12P-100A]	18	PE-TDS003 [P8D-508]	5
PE-PDI003 [P12P-100C]	18	PE-TDS004 [i21-400i]	6
PE-PDI004 [P1-600A]	18	PE-TDS005 [P23-CA.1]	6
PE-PDI005 [P1-600B]	18	PE-TDS006 [P13-TR7]	7
PE-PDI006 [P1-600C]	18	PE-TDS007 [P13-TR9]	7
PE-PER001 [P15D-008]	15	PE-TDS008 [P13-TR10]	7
PE-PER010	15	PE-TDS009 [P13-TR8]	7

※The model number inside the brackets [] represents the old model number. Please use this index when you need to compare the new model number to the old number.



YouTube NISSIN Channel
<https://www.youtube.com/user/nissin1103>