



**BIO WASTE DECONTAMINATION,  
CLEANING IN PLACE, GMP WASHERS,  
GMP PROCESS SKIDS & UTILITY PANELS**

DELIVERED WITH INTEGRITY SINCE 1961

# COMPANY FORMATION



# TEAM

FAMILY OWNED SINCE 1961



STEVE AND DAVE OVERTON  
OWNERS/DIRECTORS

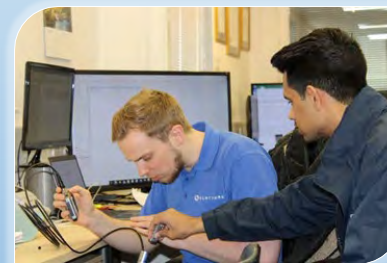
- EXPERIENCED
- SKILLED
- DEDICATED
- PROFESSIONAL
- HONEST



DESIGN



FABRICATE



TEST



COMMISSION

# GLOBAL CUSTOMERS



# GMP MANUFACTURING INTERNATIONAL STANDARDS



# EFFLUENT DECONTAMINATION SYSTEMS (EDS)

ENABLING SCIENTIFIC ADVANCES | PROTECTING OUR ENVIRONMENT

- BIOTECH / VACCINE MANUFACTURE
- UNIVERSITY / R&D CENTRES
- VIROLOGY LABORATORIES
- ANIMAL LABORATORIES



# EFFLUENT DECONTAMINATION SYSTEMS (EDS)

BIOSAFETY LEVELS (BSL)



UNDER SINK



WHOLE FACILITY



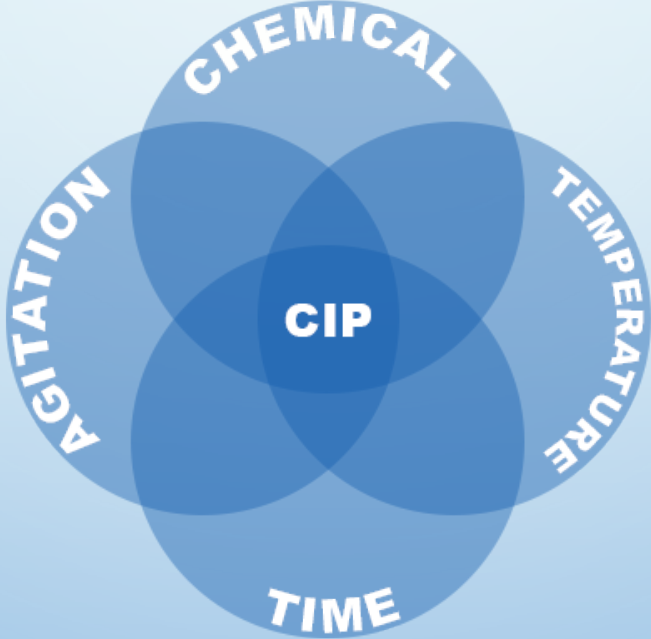
COMPACT



# CLEANING IN PLACE CIP



MOBILE



FIXED



# CLEANING IN PLACE CIP

FLEXIBLE SOLUTIONS



ATEX



NO VESSEL



HIGH CAPACITY



# STERILISATION IN PLACE (SIP)



MOBILE



FIXED

# GMP WASHERS



- SMALL PARTS
- DRUMS
- PALLETS
  
- SINGLE DOOR
- PASS-THROUGH
- ULTRASONIC



# GMP WASH BOOTHS



- IBC WASHING
- SINGLE DOOR
- PASS THROUGH
- AUTO LOADING
- ATEX RATED



# GMP PROCESS, CUSTOM SKIDS, UTILITY PANELS



- GMP SKIDS
- PURIFIED WATER & WFI
- SOLUTION, BUFFER & MEDIA PREPARATION
- MIXING AND BLENDING SKIDS
- DOSING SKIDS
- UTILITY PANELS
- TRANSFER PANELS
- SERVICE PANELS



# TANKS, VESSELS, MIXERS



- MOBILE VESSELS
- PRESSURE VESSELS
- JACKETED MIXING VESSELS
- VESSEL SKIDS
- SOLUTION PREPARATION

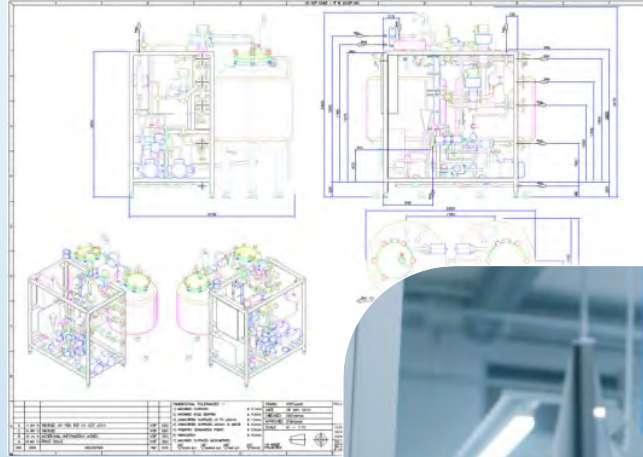
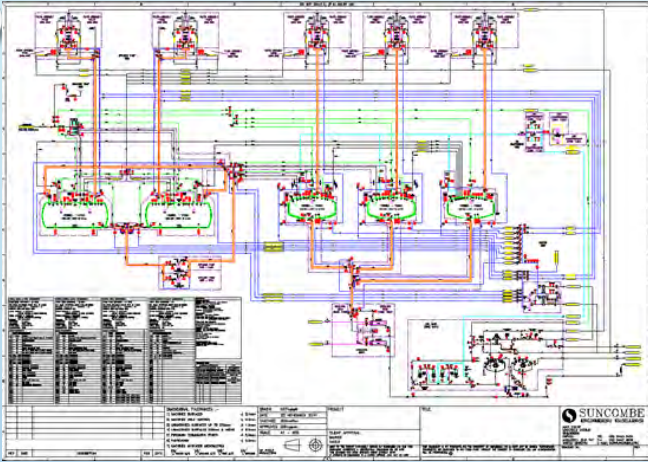


# CONTAINERISED SYSTEMS

- MODULAR
- PLUG & PLAY
- FULLY ASSEMBLED
- WEATHERPROOF



# DESIGN – 2D



- GENERAL ARRANGEMENTS
- PROCESS FLOW DIAGRAMS
- P&I DIAGRAMS
- SCHEMATICS
- CIRCUIT DIAGRAMS





# DESIGN – 3D MODELLING



- VISUALISATION
- LAYOUT OPTIMISATION
- CONFIGURATION PLANNING



 **SOLIDWORKS**



**INVENTOR**

# HYGIENIC DESIGN & CONSTRUCTION



# CERTIFICATION



- ✓ CE MARK
- ✓ PRESSURE EQUIPMENT DIRECTIVE (PED) (2014 / 68 / EU)



- ✓ EN 13445



- ✓ PD 5500:2018



- ✓ ASME VIII

- ✓ ASTM A-269

- ✓ 3A DAIRY

...AND MORE

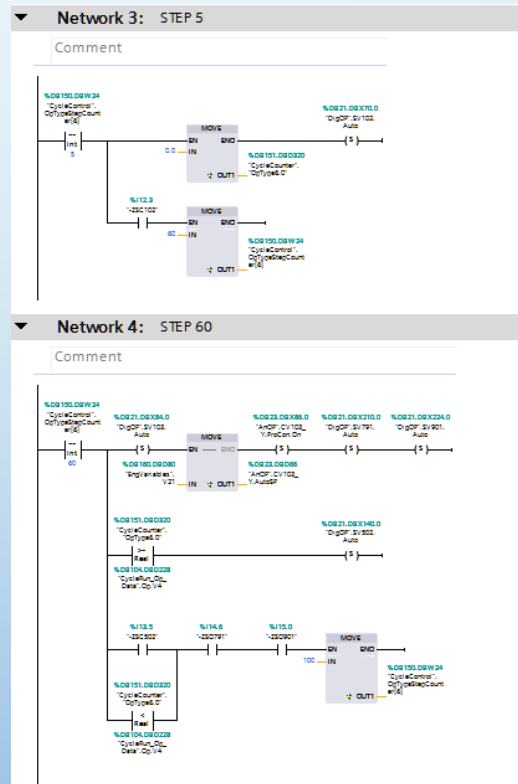
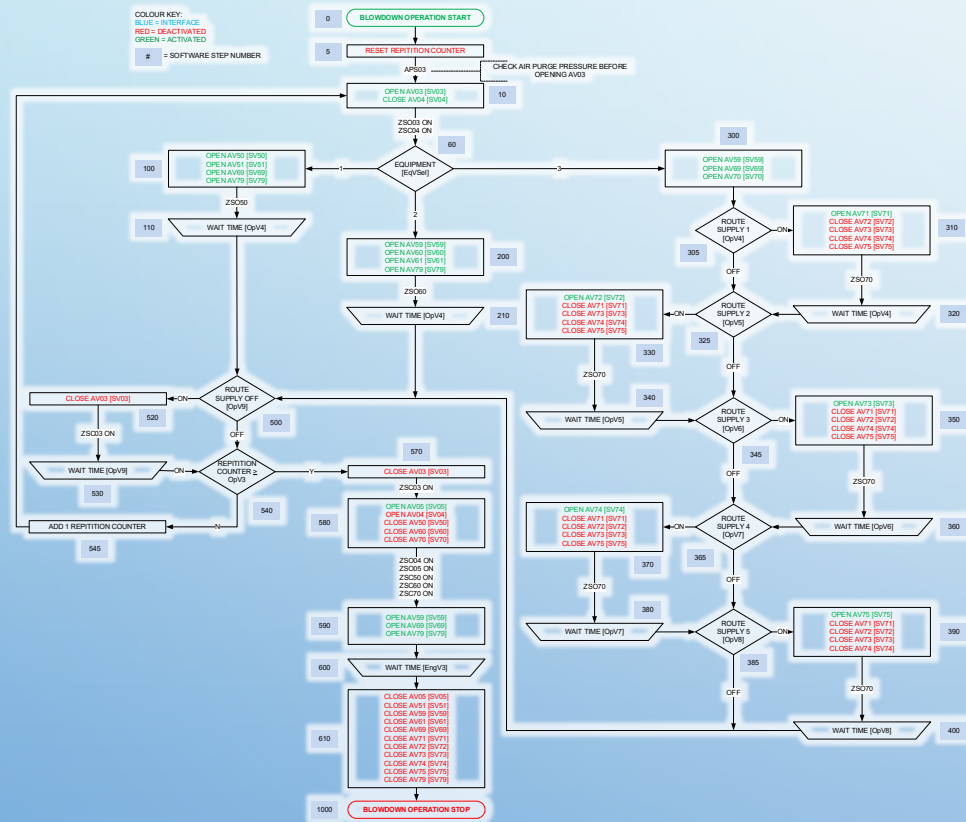
# RISK ASSESSMENT



		Impact →				
		Negligible	Minor	Moderate	Significant	Severe
Likelihood ↑	Very Likely	Low Med	Medium	Med Hi	High	High
	Likely	Low	Low Med	Medium	Med Hi	High
	Possible	Low	Low Med	Medium	Med Hi	Med Hi
	Unlikely	Low	Low Med	Low Med	Medium	Med Hi
	Very Unlikely	Low	Low	Low Med	Medium	Medium

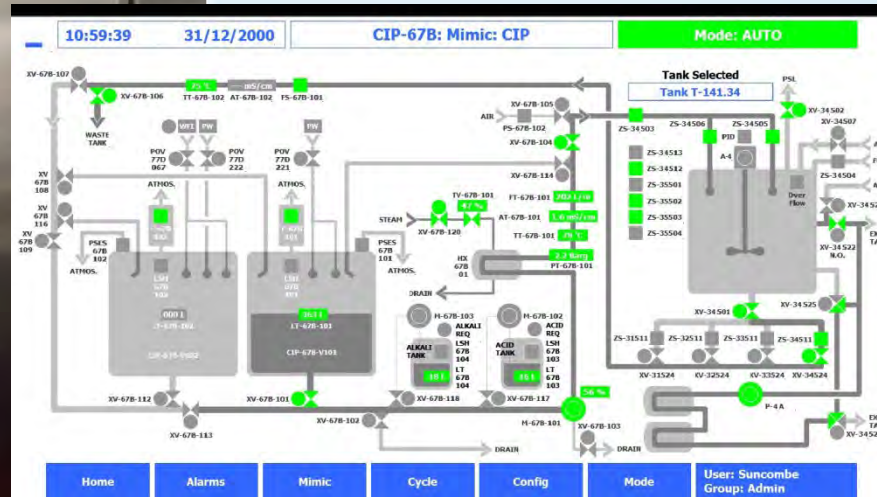
- FAULT AND FAILURE ANALYSIS
- HAZID (HAZARD IDENTIFICATION STUDY)
- HAZOP (HAZARD AND OPERABILITY STUDY)
- LOPA (LAYERS OF PROTECTION ANALYSIS)
- SIL (SAFETY INTEGRITY LEVEL)

# AUTOMATION DESIGN



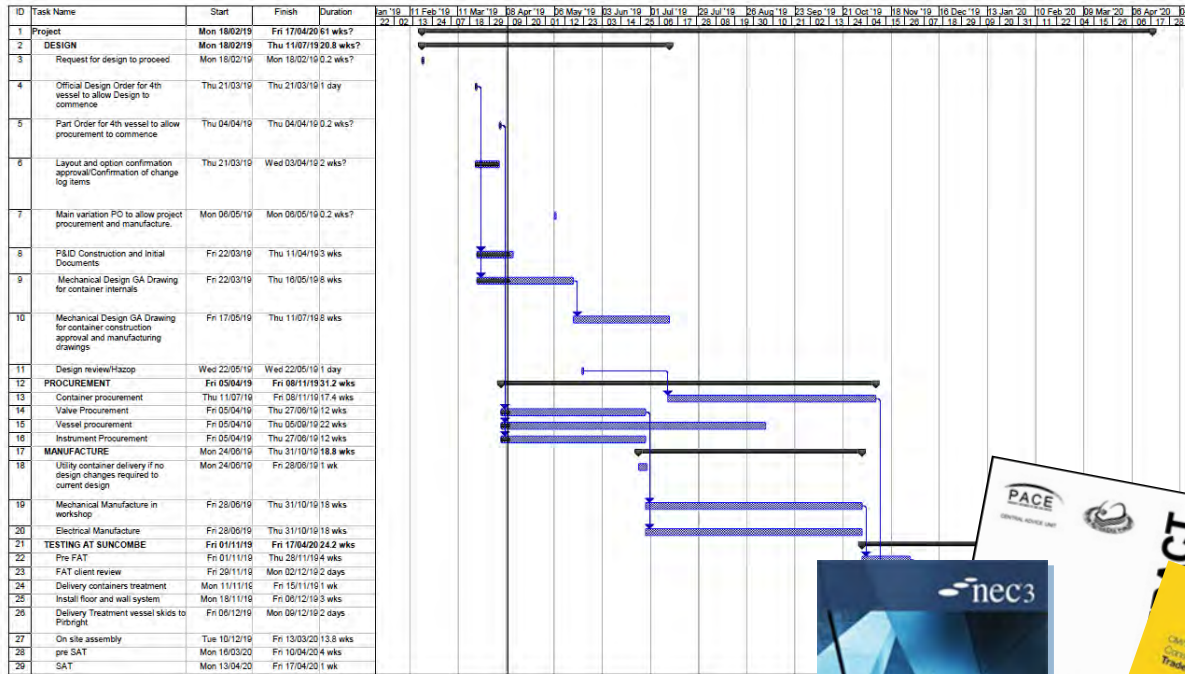
**SIEMENS**

# AUTOMATION BUILD



- LARGE HMI
- ROBUST
- INTUITIVE VISUALISATION
- 21CFR COMPLIANT
- REMOTE ACCESS CONTROL

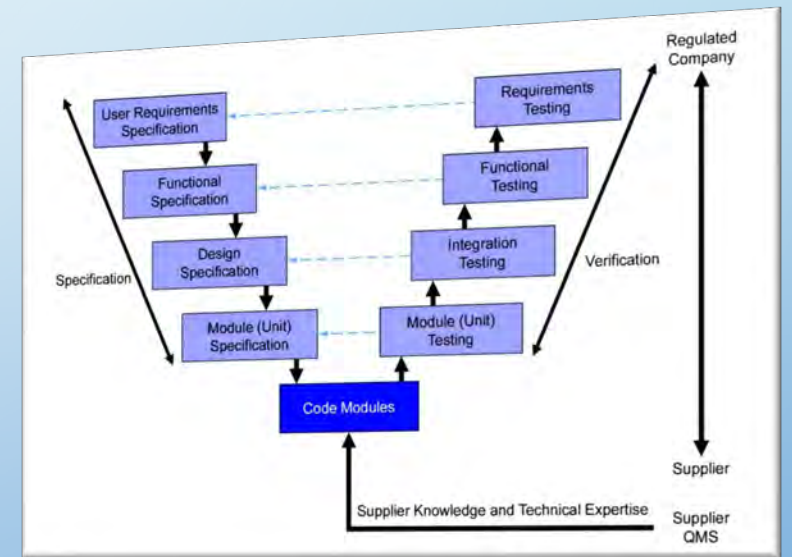
# PROJECT & QUALITY MANAGEMENT



- QUALITY SYSTEMS
- PROGRAM CONTROL
- DOCUMENTATION CONTROL
- VALIDATION & COMPLIANCE
- CONTRACT MANAGEMENT



# VALIDATION





# TESTING & TRAINING




- ✓ FACTORY ACCEPTANCE
- ✓ SITE ACCEPTANCE
- ✓ INSTALLATION QUALIFICATION
- ✓ OPERATION QUALIFICATION
- ✓ OPERATOR, ENGINEER & SERVICE TRAINING



# DOCUMENTATION

- ✓ MECHANICAL, ELECTRICAL, PROCESS DESIGN DRAWINGS
- ✓ FUNCTIONAL, HARDWARE, SOFTWARE SPECIFICATIONS
- ✓ FACTORY & SITE ACCEPTANCE PROTOCOLS AND REPORTS
- ✓ CERTIFICATION AND CALIBRATION
- ✓ OPERATION & MAINTENANCE MANUALS
- ✓ ...AND MORE





WHEN QUALITY MATTERS  
YOU CAN TRUST

**SUNCOMBE**

[www.suncombe.com](http://www.suncombe.com)