

# **CABLENET**

*Quality Through Every Connection*



**Patch Leads**  
**Structured Cabling**  
**Cabinets**  
**Power**  
**Network Hardware**  
**Management**  
**AV Hardware**  
**AV & Computer Cables**  
**Optical Transceivers**

# Patch Leads

## CAT5e Patch Leads:

- UTP & STP
- 11 colours, lengths from 0.3mtr up to 30mtr
- Annealed copper – No aluminium content
- PVC & LSZH
- Flush booted and snagless available
- CAT5e Channel test compliant
- Suitable for 10 Base T, 100 Base TX & 1000 Base T Gigabit Ethernet
- Verified to ISO11801 and ANSI/TIA/EIA



**VELOCITY**  
WARRANTED STRUCTURED CABLING SYSTEM

## CAT6 Patch Leads:

- UTP & STP
- 11 colours, lengths from 0.3mtr up to 30mtr
- Annealed copper – No aluminium content
- PVC & LSZH
- Flush booted and snagless available
- CAT6 Channel test compliant
- Suitable for 10 Base T, 100 Base TX & 1000 Base T Gigabit Ethernet
- Verified to ISO/IEC11801 Class E and ANSI/TIA/EIA 568-B.2-1



**VELOCITY**  
WARRANTED STRUCTURED CABLING SYSTEM

## Cat6a Patch Leads:

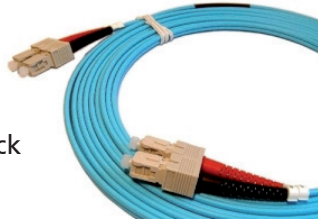
- SSTP PIMF (Pairs Individually Metal Foiled)
- 7 Different colours
- Snagless HD design
- Conforms to ISO/IEC 11801 ED.2
- Suitable for 10 Base T, 100 Base TX & 1000 Base T Gigabit & 10G Ethernet
- LSZH jacket
- Channel test compliant



**VELOCITY**  
WARRANTED STRUCTURED CABLING SYSTEM

## Multimode Fibre Optic Patch Leads:

- OM1, OM2, OM3 & OM4 leads available
- Economy and premium grades
- All common connector types available from stock
- Coloured leads available



**VELOCITY**  
WARRANTED STRUCTURED CABLING SYSTEM

## Singlemode Fibre Optic Patch Leads:

- OS1 and OS2 leads available
- Economy and premium grades including Telcordia standards
- All common connector types available from stock
- Coloured leads available



**VELOCITY**  
WARRANTED STRUCTURED CABLING SYSTEM

## Bespoke Manufacturing



*Bespoke pin outs & lengths  
Copper & fibre  
Labelling & designation  
Bundles & pre-terms*

## Don't compromise your network with Copper Clad Aluminium



- ✗ Not CAT5e or CAT6 compliant
- ✗ More data collisions
- ✗ Dangerous attenuation for PoE

## HD Snagless Leads

*The best of both worlds*



*Snag free design suitable for high density patching*

**VELOCITY**  
WARRANTED STRUCTURED CABLING SYSTEM

## CWDM from ProLabs



Increase bandwidth on rented fibre links by x16  
Minimal Cost - Rapid ROI



## Lockable RJ45 Plugs



- Prevent tampering
- Secure outlets
- Protect your network

# Structured Cabling

## Outlets:

- Cat5e and CAT6 shuttered low profile modules
- Single and double gang face plates and back boxes
- LJ6C modules for floor boxes available
- Channel test compliant



VELOCITY  
WARRANTED STRUCTURED CABLING SYSTEM

## Bulk Cable:

- CAT5e, CAT6 and CAT6a
- UTP, FTP, SSTP and PIMF
- PVC and LSZH
- 305mtr and 500mtr drums available



VELOCITY  
WARRANTED STRUCTURED CABLING SYSTEM

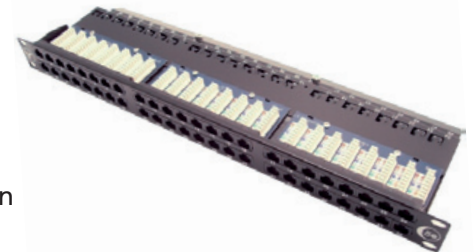
## Telco Leads:

- CAT3 and CAT5
- AMP and Avaya components
- Manufactured in-house to customer specifications
- LSZH and PVC cable available
- 180°, 110° and 90° connector hoods available
- Suitable for use with the CISCO voice gateway family of products



## Copper Patch Panels:

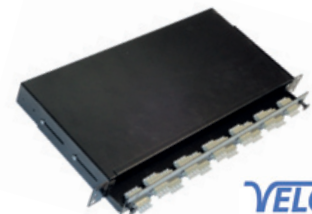
- Cat5e and CAT6
- UTP and FTP
- Built-in cable management
- Phosphor bronze contacts
- Vertical and horizontal punch down
- RJ21/RJ45 panels available
- Channel test compliant



VELOCITY  
WARRANTED STRUCTURED CABLING SYSTEM

## Fibre Optic Patch Panels:

- 2-48 port panels
- Multimode and singlemode
- All common connector types available
- Built in cable management



VELOCITY  
WARRANTED STRUCTURED CABLING SYSTEM

## High Density Optical Connectivity System:

- Up to 48 fibres in a single cable
- MPO connector containing 12 fibres
- Cassette systems breaks out to standard duplex connectors
- Available in OM1, OM2, OM3, OS1 & OS2



VELOCITY  
WARRANTED STRUCTURED CABLING SYSTEM



# Cabinets

## Uospace 6210 Server Cabinet:

- 30U, 42U & 48U heights available
- 600mm & 800mm widths, 1000mm & 1200mm depths
- Agnostic to hardware vendor
- >65% vented door perforation
- 1200kg weight loading



## Uospace 6210 Server Plus Cabinet:

- 42U & 48U heights available
- 600mm & 800mm widths, 1000mm & 1200mm depths
- Agnostic to hardware vendor
- >85% vented door perforation
- 1200kg weight loading



## Uospace 6210 Co-locate Server Cabinet:

- Same sizes as 6210 Server cabinet available
- 2 or 4 Separated hardware compartments
- Dedicated and separated cabling channels
- Key over ride locks on all doors as standard
- 1200kg weight loading



## ColdLogik High Density Server Cabinet:

- Available in 42U & 48U
- 600mm & 800mm widths, 1000mm & 1200mm depths
- Suitable for all major vendors blade servers
- Heat removal of 45kW
- Up to 90% energy savings on existing cooling



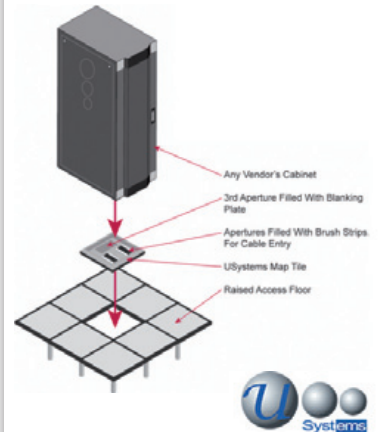
## Ucoustic Soundproof Server Cabinet:

- 12U, 24U & 42U models available
- Capable of 28.5dBa noise attenuation
- 7.2kW heat dissipation on active models
- Compatible with all major vendor's servers
- Wall mounted cabinets also available



## Multi Application Plinth Tile

- Increase cooling efficiency
- Remove the need to cut tiles
- Reduce installation costs



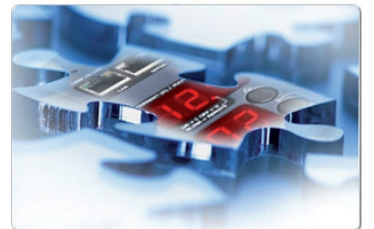
## Cabinet Fire Suppression



Protect hardware & data

**WAGNER**

## Managed Power Distribution



- Remote power metering
- Remote switching
- Sequential start up
- Alerts and alarms

## Environmental Monitoring



### IP based monitoring

- Temperature & Humidity
- Water
- Smoke
- Cabinet door

**Jakarta**

### Uspace 6210 Data Cabinet:

- 24U, 30U, 36U, 42U & 48U heights available
- 600mm & 800mm widths, 600mm & 800mm depths
- Glass, steel or vented doors available
- 1000kg weight loading
- Supports multiple depths of hardware



### Velocity Economy Data Cabinet:

- 30U, 42U & 47U heights available
- 600mm & 800mm widths, 600mm & 800mm depths
- Glass, steel or vented doors available
- 1000kg weight loading



### Uspace 7210 Midi Cabinet:

- 12U & 18U server cabinets
- 600mm, 800mm & 1000mm depths available
- Designed to fit under a desk
- Glass and vented steel doors available



### Uspace 6250 Wall Cabinet:

- 6U, 10U, 14U & 18U heights available
- 550mm depth 2 part wall cabinet
- Double hinge allows access to rear of hardware
- Removable side panels



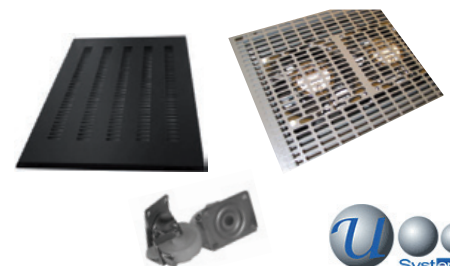
### Uspace 7250 Wall Cabinet:

- 12U & 18U heights available
- 600mm depth
- Glass or steel door
- Removable side panels



### Racking Accessories:

- Wide range of shelving, depth support and mounting fixtures
- Fan trays & airflow management products
- Plinths, castors and feet



# Power

## Eaton Single Phase UPS:

- Units from 350VA up to 20kVA
- Offline, line interactive and online UPS available
- Tower, rack mountable and scalable units
- Industry leading efficiency



**EATON**  
Powering Business Worldwide

## Eaton Three Phase UPS:

- Units from 8kVA up to 1.1MVA
- Advanced Battery Management (ABM) maximises battery life
- HotSync parallel technology increases resilience
- Industry leading efficiency



**EATON**  
Powering Business Worldwide

## Eaton ePDU - Basic Power Distribution Units:

- 10A, 13A, 16A, 32A and 63A inputs
- C13, C19, BS1613 and shuko outlets
- Single and 3 phase units available
- 19" and zero U form factors
- Aluminium chassis
- Universal mounting system



**EATON**  
Powering Business Worldwide

## Eaton ePDU - Intelligent Power Distribution Units:

- Same physical properties as basic PDU's
- PDU and outlet current metering
- Configurable thresholds, alerts & alarms
- Sequential start up
- Temperature sensor ready



**EATON**  
Powering Business Worldwide

## Eaton ePDU - Retro Fittable Inline Meters:

- 10A, 16A and 32A inputs and outlets
- Fits between supply socket and PDU
- Single and dual feed units
- IP based current metering
- Configurable thresholds, alerts & alarms
- Dual feed unit enables installation without disruption



**EATON**  
Powering Business Worldwide

## Eaton BladeUPS

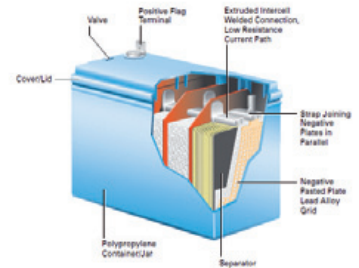


*Modular UPS 12kW up to 60kW*

- Rack mountable 12kW modules
- Pay as you grow solution
- Low cost N+1 upgrade

**EATON**

## Advanced Battery Management



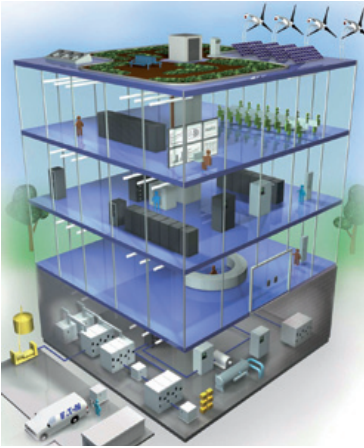
*Advanced charging algorithm:*

- Significantly extends battery life
- Increases resilience
- Reduces disposal costs
- Protects the environment

**EATON**



## Sustainable Building Solutions



- Reduce Op-Ex
- Manage risk
- Enhance reliability
- Protect the environment



## Eaton Source Transfer Switches:

- Provisions dual power feeds to single PSU devices
- C13, C19, 16A & 32A commando inputs/outlets
- Industry leading change over time
- Selectable primary and secondary feed
- Optional attachable PDU
- 19" 1U or zero U form factor



## Eaton DC Rectifiers:

- 48V DC distribution systems
- Suitable for networking and telecommunications equipment
- Built in battery back up
- Modular circuit breakers



## Raritan PX Intelligent Power Distribution Units:

- 10A, 13A, 16A, 32A and 63A inputs
- C13, C19, BS1613 and shuko outlets
- Single and 3 phase units available
- 19" and zero U form factors
- PDU & outlet metering
- Reads voltage, current and kWh
- Capable of ISO/IEC +/- 1% billing-grade accuracy
- Temperature sensor ready



## Raritan Power IQ Management Software:

- Monitor multiple PDU's through a single dashboard
- Logically group PDU's and PDU outlets
- Consolidate data from multiple PDU's
- View real time data for proactive monitoring
- View retrospective data for trending & capacity planning
- Distribute management policies across multiple racks & DC's
- Schedule time based switching



## Power Cords:

- UK, Shuko, US, Swiss, C13, C19, C5 & C7 outlets available
- 0.5mtr up to 5mtr
- Extension blocks available
- UL approved



## Advanced Power Analysis with Power Xpert Meter



- Identify power quality problems
- Detect & record high speed transients
- Monitor circuit loading
- Manage energy utilisation



# Network Hardware

## Unmanaged Switches:

- 10/100 & 10/100/1000 ports
- 16 & 24 port units available
- 8k MAC addresses
- Auto detection of straight through & x-over cables



## Managed Switches:

- Layer 2 & Layer 3 switches available
- 10/100, 10/100/1000 and 10Gb switching
- Copper & fibre ports
- VLAN & VLAN tagging
- Spanning Tree Protocol
- Port based QoS
- Supports IP based and MAC Address based access control lists
- IPv4 & IPv6 management



## Desktop/SOHO Switches:

- 5, 8 & 16 port switches available
- 10/100 & 10/100/1000 ports
- 2k MAC addresses
- Auto detection of straight through or x-over connections



## Power Over Ethernet Switches:

- Managed & unmanaged units available
- IEEE802.3af PoE & IEEE802.3at high power PoE
- Suitable for IP phones, WLAN AP's & IP cameras
- 4-24 port options available



## Power Over Ethernet Injector Hubs:

- 4-24 port options available
- IEEE802.3af PoE & IEEE802.3at high power PoE
- Managed & Unmanaged options
- Allows PoE to be added without replacing network switch



## Planet Ethernet Copper to Fibre Media Converters:

- Stand alone and chassis mounted solutions
- Solutions for singlemode and multimode fibre
- 10/100 and 1Gb products available



## Reduce Power Consumption with Planet FNSW Switches



- Switch detects connecting cable length
- Adjusts transmission power accordingly
- Can reduce power consumption by 22%



## Power Over Ethernet



- Reduce requirements for power outlets
- Avoid H&S regulations in public places
- Enable provision of centralized UPS to dispersed devices







## Transition Media Converters:

- DS3-T3/E3 Coax to fibre
- Singlemode to Multimode – Ethernet, token ring & ATM/SONET
- Serial to fibre V.35/X.21/RS449/RS530/RS232
- POTS, T1/E1 copper to fibre
- PoE Ethernet media converters
- Analogue CCTV: NTSC/PAL/SECAM copper to fibre
- Fixed port and SFP slots
- Chassis based and stand alone options
- Remote management available
- Redundant power



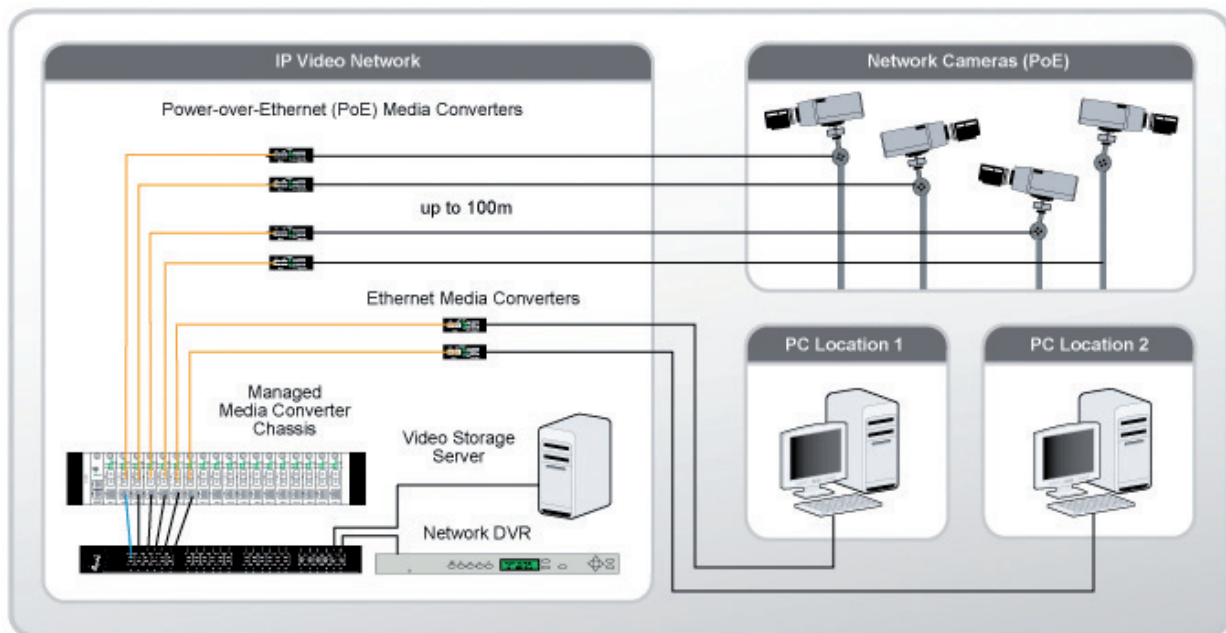
## ProLabs GBIC's and SFP's:

- Compatible units for all major switch vendors
- 1Gb, 4Gb, 10Gb, 40Gb, 80Gb
- SX, LX and ZX
- CWDM and DWDM



# Fibre Optic Networks for Video Surveillance with Transition

- Reduced noise & interference
- Increased transmission distances
- Increased security



# Management

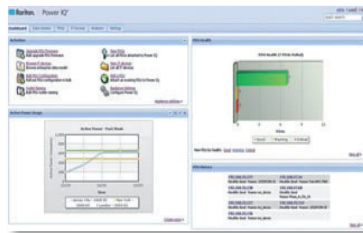
## Raritan KVM Switches:

- Analogue and IP based KVM switches
- Dongles allow devices to be connected via structured cabling
- Built in RADIUS, LDAP & AD security
- FIPS 140-2 certified encryption
- BIOS level access and desktop control
- Combined KVM and serial consol servers
- Industry leading mouse synchronization
- 1-64 port units available Supports virtual media



## Raritan Command Centre Infrastructure Management Server:

- Centralized dashboard for KVM switches, consol servers & PDU's
- Bios level access to Servers via KVM switches
- Bios level access to virtual servers via VMware viewer
- Bios level access to blade servers
- Interoperable with Raritan Power IQ
- LDAP, AD, RADIUS & TACAS security options
- Available as hardware or virtual server
- In band and out of band management



## Raritan TFT Drawers:

- 17" & 19" displays available
- Supports Sun, Unix, Windows & Linux
- 1280 x 1024 resolution
- Compatible with any KVM switch for out of band access
- Available with built in analogue KVM switch



## Raritan dc Track Data Centre Management:

- Log and monitor all elements of data centre
- Manage adds moves and changes
- Create work orders
- Monitor power consumption
- Monitor environmental conditions
- Manage all DC assets



## Raritan Dongles RJ45 to KVM



- Connect KVM switches to servers via structured cabling
- Minimize cabling within cabinets
- Easily patch locally dispersed servers to a central KVM switch



## \*\* Newsflash \*\*



Raritan power management products interoperate with Cisco EnergyWise platform to help businesses reduce energy costs and protect the environment



## Jakarta Environmental Monitoring:

- IP based monitoring of multiple sensors
- T&H, Smoke, water, vibration & cabinet door
- Sensors connected via structured cabling
- User configurable thresholds, alerts and alarms
- Aggregate data from multiple cabinets
- Real time and retrospective monitoring
- 1-24 port units available



**Jakarta**

## Rack Mounted Fire Protection:

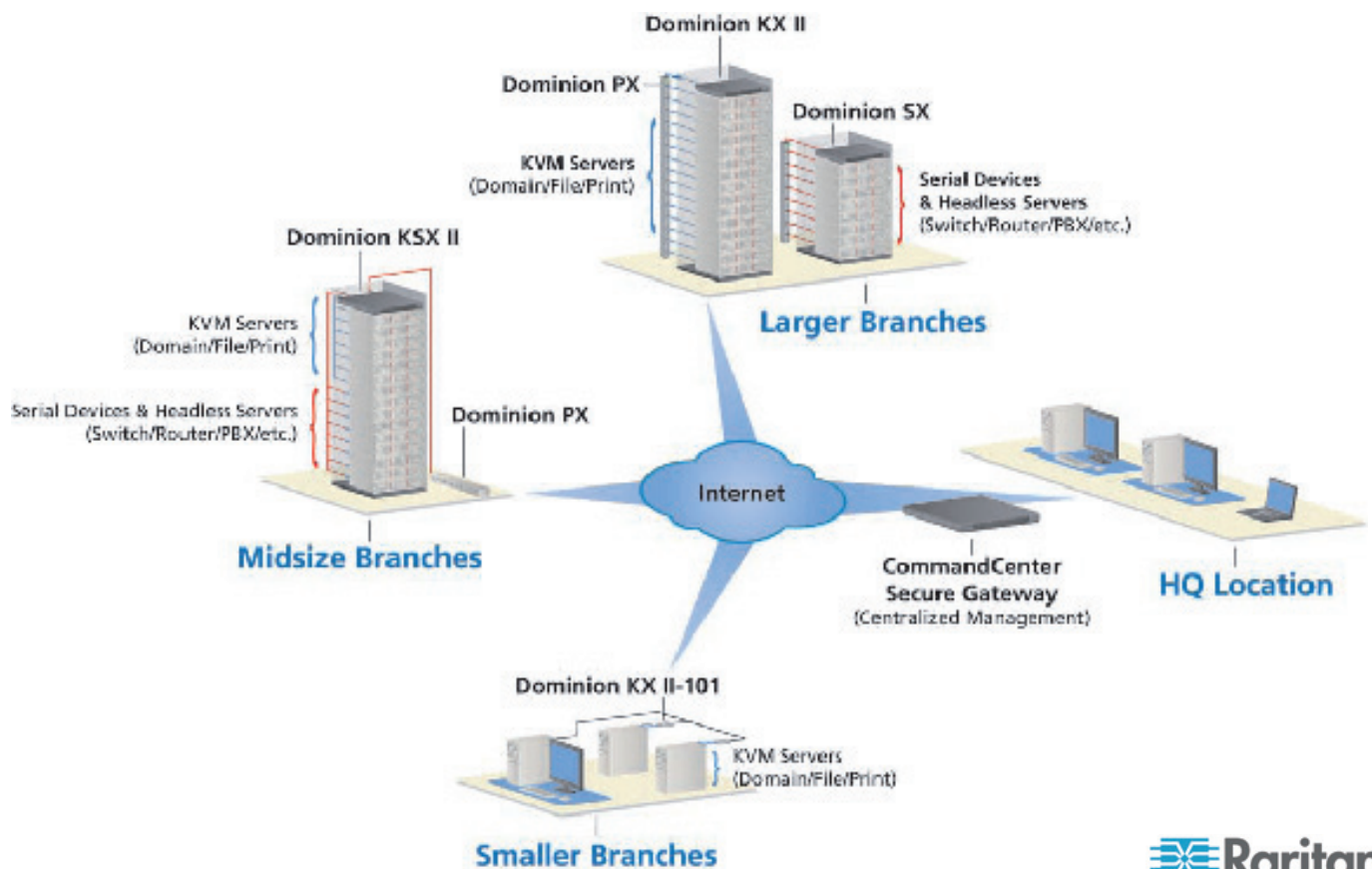
- VESDA detection system located inside cabinet
- NOVEC 1230 extinguishing agent discharged into cabinet
- Emergency power isolation
- User configurable delays and responses
- Interoperable with room systems & BMS
- SNMP alerts



**WAGNER®**



## Remote Office Management Solutions from Raritan

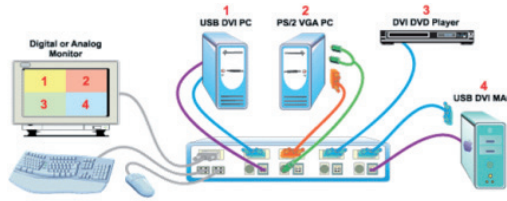


**Raritan.**  
Know more. Manage smarter.™

# AV Hardware

## NTI DVI/VGA Quad Screen Multiviewer:

- Video from multiple devices on 1 screen simultaneously
- Cascadable up to 16 devices
- Supports touch screen via USB connection
- Supports PC's, Macs, Suns & DVD players
- 1600 x 1200 on VGA & 1900 x 1200 on DVI
- Accepts simultaneous analogue and digital inputs



# NTI



Best of breed digital signage solutions for:

- Banking
- Education
- Transport



## NTI CAT5 Video Matrix Switch:

- Route audio & video from multiple sources to multiple displays
- Supports 32 up to sources & 16 displays
- Single source can be routed to 1 or more displays
- Uses CAT5 cable supporting distances up to 600ft
- Supports VGA, S-Video & HDTV



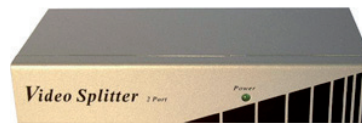
## NTI Video Extenders:

- VGA extender via CAT5/6 up to 1000ft
- DVI extender via 2 x CAT5/6 up to 300ft
- DVI extender via multimode/singlemode fibre up to 4900ft
- HDMI extender over CAT5/6
- HDMI extender over fibre
- S-Video extender over CAT5/6



## SVGA Video Splitters:

- 2, 4 & 8 way splitters available
- Supports distance of up to 65mtr
- Daisy chain up to 24 monitors
- Plug & play



## Planet IP Cameras:

- Cabled & wireless cameras available
- Fixed and PTZ
- Indoor and outdoor cameras
- MPEG & M-JPEG compression
- 1280 x 1024 & 1920 x 1080 resolution at 30fps
- Night vision cameras available



# AV & Computer Cables

## SVGA Cables:

- 1mtr, 2mtr, 3mtr, 5mtr, 10mtr & 15mtr lengths available
- Male to male and male to female leads available
- DDC2 compliant optimizes resolution
- Triple shielded for optimal image quality



**VELOCITY**  
WARRANTED STRUCTURED CABLING SYSTEM

## DVI Cables:

- 2mtr, 3mtr, 5mtr & 10mtr lengths available
- Single & dual link DVI leads
- Supports 1900 x 1080 resolution
- DVI to SVGA leads available



**VELOCITY**  
WARRANTED STRUCTURED CABLING SYSTEM

## HDMI Cables:

- 2mtr, 3mtr, 5mtr, 10mtr, 15mtr & 20mtr available
- HDMI v1.4
- Gold plated contacts
- Right angle & straight connectors
- HDMI to DVI & Display port Adaptors
- HDMI splitters



**VELOCITY**  
WARRANTED STRUCTURED CABLING SYSTEM

## Display Port Cables:

- 2mtr & 3mtr cables available
- Display port to DVI & SVGA adaptors



**VELOCITY**  
WARRANTED STRUCTURED CABLING SYSTEM

## USB Cables:

- 2mtr, 3mtr & 5mtr available
- USB.1, USB.2 USB.3, Mini USB & Micro USB
- USB-Serial & USB-PS2
- Active extensions
- USB hubs



**VELOCITY**  
WARRANTED STRUCTURED CABLING SYSTEM

## SATA Cables:

- Point-to-point architecture
- Reduced cable-bulk and cost
- Faster data transfer through higher signaling rates
- Efficient transfer through an (optional) I/O queuing protocol



**VELOCITY**  
WARRANTED STRUCTURED CABLING SYSTEM



# Optical Transceivers

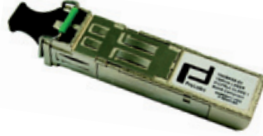
## FE Transceivers:

- SFP and GBIC Standards
- SX/FX Multimode and LX, EX, ZX Singlemode
- Distances up to 80km



## 1GigE Transceivers:

- SFP and GBIC standards
- SX Multimode and LX, EX, ZX, EZX Singlemode
- Distances up to 200km



## 10GigE Transceivers:

- XENPAK, X2, XFP and SFP+ standards
- SR Multimode and LR, ER, ZR Singlemode
- Distances up to 80km



## 2, 4 and 8Gig FC Transceivers:

- SFP & SFP+ standard
- Distances up to 100km



## Bi Directional and WDM Transceivers:

- BiDi, CWDM and DWDM Transceivers
- GBIC, SFP, XENPAK, X2, XFP and SFP+
- Distances up to 120km
- Full Multiplexer solutions available on request



## Additional Transceiver Options:

- 2Km Multimode GBIC and SFP
- 40Km 1310nm Singlemode SFP
- 40 & 70km 1310nm Singlemode SFP+



## OCx Transceivers:

- OC3, OC12 and OC48 SFP standards
- Distances up to 2km Multimode, up to 80km Singlemode



# About Cablenet

Cablenet Trackmaster Ltd is an importer and distributor of networking, cabling and power products. As well as a wide range of imported copper and fibre optic cabling products and computer cables Cablenet also distributes for a number of best of breed vendors, see our website [www.cablenet.co.uk](http://www.cablenet.co.uk) for the full list.

## Why buy from Cablenet?

- Large stock holding; Cablenet has over 60000 sq ft of warehouse space in the UK to house our extensive stocks and provide our customers with fast lead times.
- Massive discounts off RRP for trade customers; As a reseller buying from Cablenet our prices will enable you to increase margins and remain competitive.
- Stock continuity; unlike many cable importers Cablenet takes very seriously the consistency in products we supply, you can always be sure that from one month to the next the style, colour and design of our cables do not change enabling you the offer continuity to your customers.
- Blank shipping; with over 24 years experience in distribution Cablenet understands that you don't want your customers knowing who your suppliers are. As such Cablenet can ship orders either without identifying paperwork or with your own delivery notes.
- Cablenet is an engineering based company and technical presales support is available to all of our customers; when you call Cablenet with an enquiry you will receive friendly and knowledgeable advice, we can recommend products for specific applications, advise on compatibility and if necessary help your sales people with respect to winning orders.
- Cablenet has one of the UK's widest range of copper patch cables in stock with cables available in 11 different colours and lengths from 0.3mtr up to 30mtr.
- Stay up to date; as a distributor it is our responsibility to keep our customers informed of new products and technologies available to the channel - keeping you one step ahead of your competition.
- Bespoke products; as well as stocking a wide range of products Cablenet also has in house a manufacturing facility to produce cables to your own specifications, call our sales team for more info on this.





**VELOCITY**  
WARRANTED STRUCTURED CABLING SYSTEM

 **PLANET**  
Networking & Communication

  
ProLabs

 **Raritan.**  
Know more. Manage smarter.™

**TRANSITION**  
NETWORKS®

  
Systems

**EAT•N**  
Powering Business Worldwide

**NTI**® NETWORK  
TECHNOLOGIES  
INCORPORATED

**Jakarta**

**WAGNER**® 

**CABLENET**

**Cablenet Trackmaster Ltd**  
Cablenet House, 2A Albany Park  
Frimley Road, Camberley, Surrey GU16 7PL

**Tel:** 01276 405 300 **Fax:** 01276 405 309 **Email:** sales@cablenet.co.uk

**www.cablenet.co.uk**