

WELLINGTON LABORATORIES



...AN ADDED MEASURE OF CONFIDENCE

WELLINGTON LABORATORIES



Wellington Laboratories Inc. has provided high quality reference standards, primarily for environmental contaminants, since its inception in 1980. By utilizing the combined expertise of skilled synthetic and analytical chemists, we have been able to design, prepare, and offer both native and mass-labelled compounds of interest in an efficient and timely manner. A great deal of effort has been put into the planning and execution of our procedures and methods, from synthesis to shipping, to ensure that our customers receive the products that they require with the quality that they expect.

Over the years, a Quality Management System has developed that reflects the commitment of all of the employees at Wellington to the distribution of quality products as well as the maintenance of excellent customer service. In fact, we now have three ISO certifications: ISO 9001:2008, ISO/IEC 17025:2005, and ISO Guide 34:2009. These certifications cover all aspects of planning, production, testing, distribution, and post-distribution service. They allow us to continuously monitor and maintain a high level of quality and service and moreover, allow our customers to satisfy the requirements of their own ISO certifications.

In short, we are committed to providing you, our customers, with quality certified reference standards of existing and potential environmental contaminants as well as other chemicals that could pose a threat to the environment and/or human health. Our current product line includes a variety of individual (native and mass-labelled) solutions, solution mixtures, and calibration solutions of well-known environmental pollutants such as PCDDs, PCDFs, PCBs, PFCs, BFRs, and PAHs.

We monitor the scientific literature, conference proceedings, as well as other relevant publications for compounds of potential environmental and/or human health concern. In addition, we routinely survey domestic and international government agencies for information on regulatory limits and required analytical methods. From this, we hope to provide you with standards that meet your needs.

The purpose of this pamphlet is to provide an overview of our registrations and accreditations. However, we are fully aware of the fact that ISO (International Organization of Standardization), ILAC (International Laboratory Accreditation Corporation) and our registrars do not guarantee the quality of our products. This is our responsibility.

Our Quality Policy

The fundamental priorities of our company are:

- The safety, health and comfort of our employees
- Protection, preservation, and enhancement of the environment
- Customer satisfaction and loyalty through the quality of our products and services

The primary objective of the Reference Standards Division is to provide our clients, through catalogue sales and custom syntheses, products of a known and documented quality.

It is our goal that, where logistically and scientifically feasible, our products, service and support will meet or exceed our clients' expectations.

The highest level of quality and service shall be achieved through the application and continuous improvement of our ISO 9001:2008 certified quality management system.

The education, commitment, and participation of all personnel in the Reference Standards Division, along with the support of the Analytical Division and Office Management at Wellington Laboratories Inc., are essential for the achievement of our quality objectives.

B.Chittim



President

N. Riddell

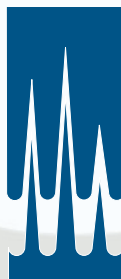


Quality Manager

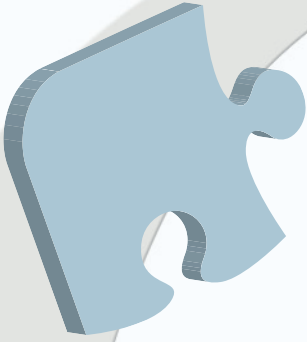
C. Tashiro



Assistant General
Manager



PUTTING THE PIECES TOGETHER



ISO 9001:2008

The implementation of an effective Quality Management System (QMS) is critical to any company for the standardization of methods that are utilized during the production, testing, packaging, shipping, and distribution of its products.

It is also an invaluable way of controlling product quality and documenting aspects of daily operations which are significant contributors to efficiency and customer satisfaction. The ISO 9001:2008 standard outlines the requirements of a QMS which demonstrates an organization's ability to consistently provide a product that meets both customer and applicable regulatory requirements. It focuses on the development and maintenance of detailed procedures which cover management responsibility, resource management, product realization, and the continual improvement of the QMS. These procedures can be divided into three levels originating from the Quality Policy.



The Quality Management System at Wellington has been certified to ISO 9001:2008 by SAI Global. Our commitment to quality has always been strong, but the addition of this certification has provided an added measure of confidence.



CERTIFICATE OF REGISTRATION

This is to certify that

Wellington Laboratories

345 Southgate Drive, Guelph, Ontario N1G 3M5 Canada

operates a

Quality Management System

which complies with the requirements of

ISO 9001:2008

for the following scope of registration

The Registration covers the Quality Management System as it applies to the design and provision of reference standards and chemicals for use in environmental analysis and toxicological research.

Certificate No: CERT-0051698
File No: 1039334
Issue Date: November 11, 2010

Original Certification Date: December 30, 2004
Current Certification Date: December 28, 2010
Certificate Expiry Date: December 27, 2013

Chris Jouppi
President,
QMI-SAI Canada Limited

Alex Ezrakhovich
General Manager,
SAI Global Certification Services Pty Ltd



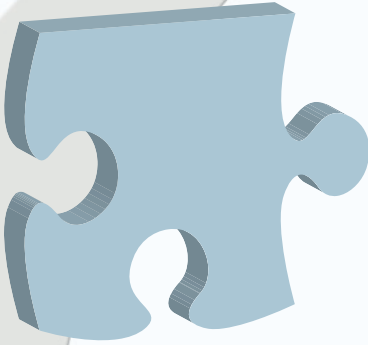
ISO 9001



Registered by:
SAI Global Certification Services Pty Ltd, 588 Sacoos Street, Sydney NSW 2000 Australia with QMI-SAI Canada Limited, 20 Carbon Court, Suite 100,
Toronto, Ontario N6W 7K6 Canada (SAI GLOBAL). This registration is subject to the SAI Global Terms and Conditions for Certification. While all data here
and all are recorded in our system and this document, SAI Global accepts responsibility only for process registration. This certificate remains the property
of SAI Global and must be returned to them upon request.
To verify that this certificate is current, please refer to the SAI Global Civil law Certification Register www.qmi-sai-global.com/qmi-sai-global



ISO/IEC 17025:2005



Having the capability to analyze for the environmental contaminants that we offer as reference standards has always been important to Wellington. Not only does this ability allow us to continually test the stability of our reference matrices, it provides us with a thorough understanding of the regulatory methods. In addition, it allows us to discuss technical issues knowledgeably with our customers.

We viewed obtaining an accreditation to ISO/IEC 17025:2005 (General requirements for the competence of testing and calibration laboratories) as an extension and validation of our existing analytical capabilities.

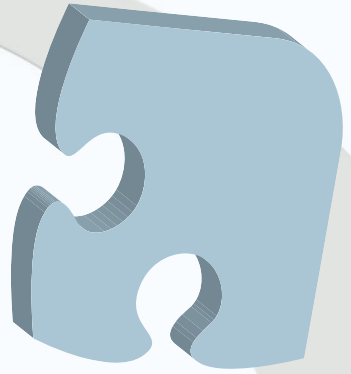
This international standard outlines the requirements that testing and calibration laboratories are required to meet in order to demonstrate that a management system is effectively implemented and the laboratory is technically competent and able to generate valid results. Although this standard was originally intended to facilitate the exchange of accurate information between laboratories and normalize the quality of data generated, it can also be applied to the generation of characterization data for certified reference materials.

Our ISO/IEC 17025:2005 accreditation has been certified by the Canadian Association for Laboratory Accreditation Inc. (CALA) and our scope is available for review on the CALA Directory of Accredited Laboratories (<http://www.cala.ca>).



ISO Guide 34:2009

As a reference material producer, it is our responsibility to demonstrate our scientific and technical competence to our customers. Advances in analytical techniques and instrumentation have resulted in the detection of many, previously unknown, environmental contaminants. With this increase in ability and expertise comes a need for high-quality certified reference standards so that accurate and reliable data can be generated with reduced uncertainty.



ISO Guide 34:2009 sets strict requirements on reference material producers to not only provide information about their products, but also to demonstrate their competence in the production of quality reference materials. Wellington obtained accreditation to this guide as part of our objective to demonstrate our commitment to quality to our customers.

Our ISO Guide 34:2009 certificate and a summary of our scope of accreditation can be found on the ACLASS ANSI-ASQ National Accreditation Board website (<http://www.aiclasscorp.com>) as well as our own website (www.well-labs.com).



Wellington remains committed to providing high quality certified reference materials to our customers. Our ISO certifications are a reflection of this commitment.

A copy of Quality Manual and/or any of our registration certificates are available upon request (info@well-labs.com).



WELLINGTON
LABORATORIES

345 Southgate Drive,
Guelph, Ontario, Canada
N1G 3M5

Phone: (519) **822-2436**
Toll-free: **1-800-578-6985**
Fax: (519) **822-2849**
Email: info@well-labs.com
Internet: www.well-labs.com