

DC Motors - 0.18kw - 11kw

Totally enclosed range

A comprehensive range of standard permanent magnet and shunt wound dc motors manufactured in accordance with IEC standards, and are available in outputs from 0,18kW to 11kW.

The entire range is characterised by a high degree of flexibility with motors being quickly adapted with brakes, tacho generators, and independent forced cooling or with a combination of these items.

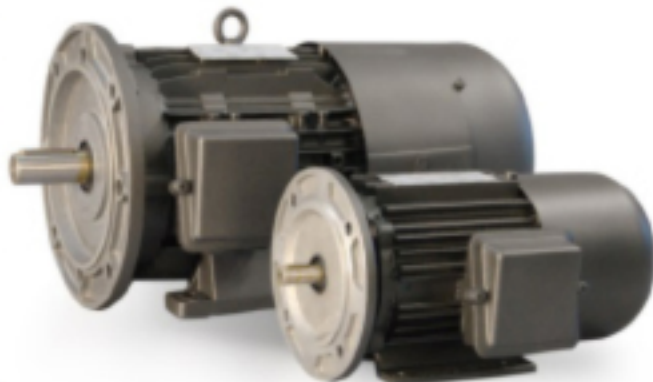
Standard motors are available ex-stock with options having a lead-time of hours.

If required development of completely new motors to customer specifications is possible with small batch sizes and short lead times.

- 0.18kW - 11kW
- 1600 series wound field speed range
-10:1 against constant torque
- 1600 series permanent magnet speed range
-20:1 against constant torque
- 1600 series with independent forced cooling speed range
-50:1 against constant torque
- 1800 series permanent magnet speed range
-100:1 against constant torque
- Low voltage available
12v - 48v or wide range of standard voltages
- Permanent magnet or compound, shunt or series wound
- IP54 as standard IP55 as an option
- Form factor 1.6 or where used with armature choke as specified form factor 1.05
- Option of extended non-drive end allows the stock modification of adding brakes, and tachogenerators.
- Foot flange mounted B35 or foot mounted B3
- Foot and 'C' face B34 available as option details on request

Note - Analogue drives would require tacho feedback for speed ranges greater than 20:1, Digital drives would require encoder feedback for speed ranges greater than 20:1

1600 Series

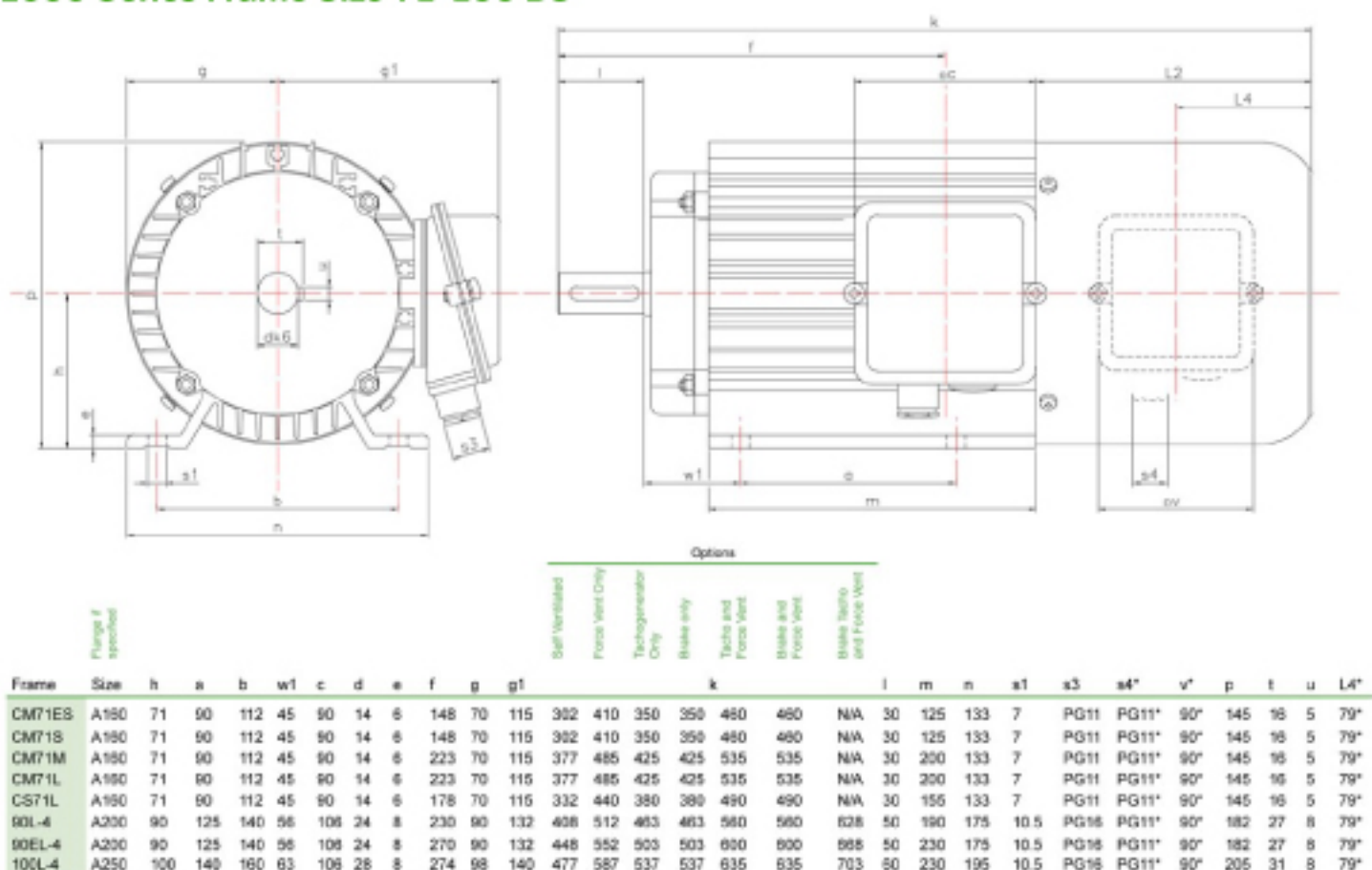


1800 Series



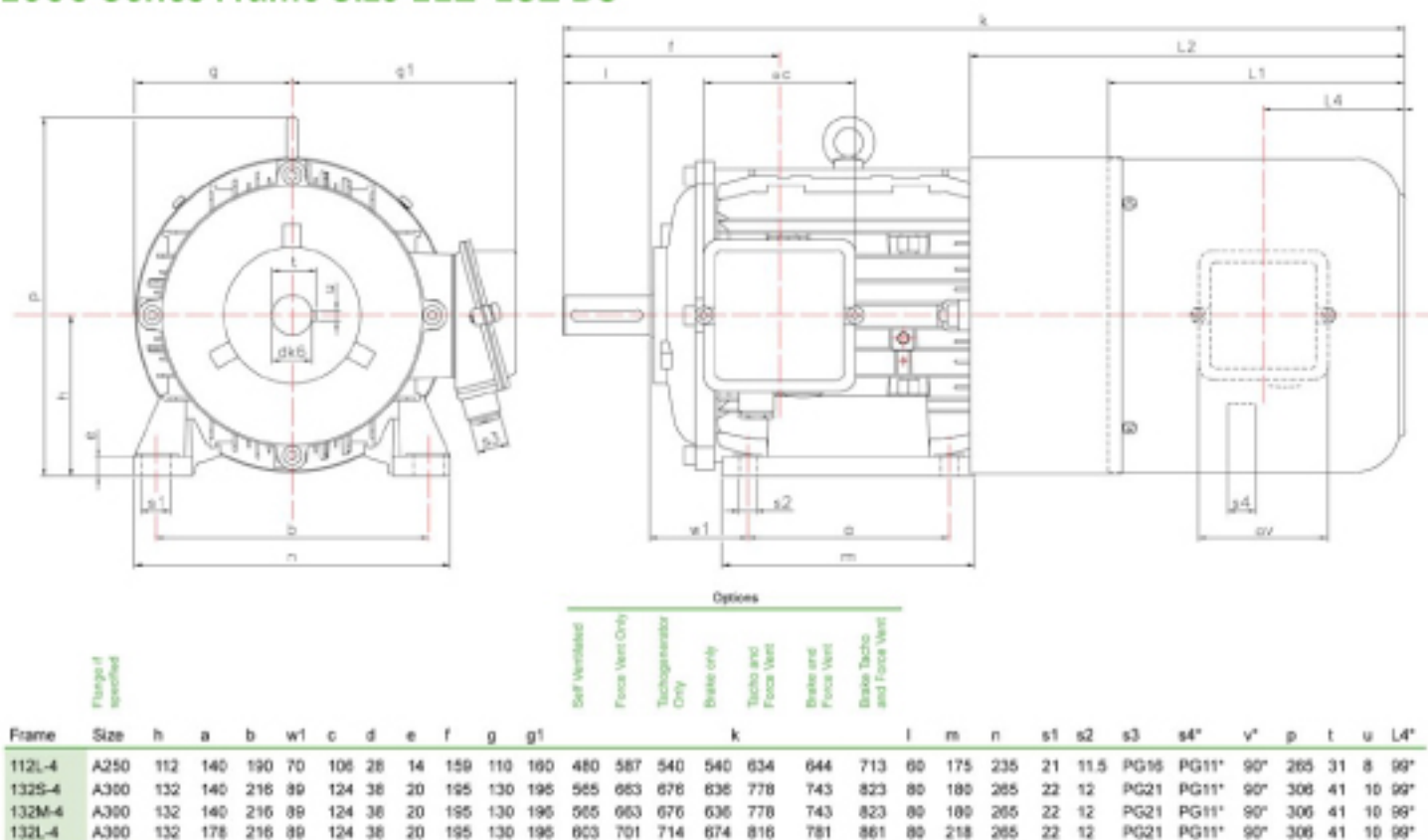
Technodrives Dimensions

1600 Series Frame Size 71-100 B3



*Only if Force Vent is fitted

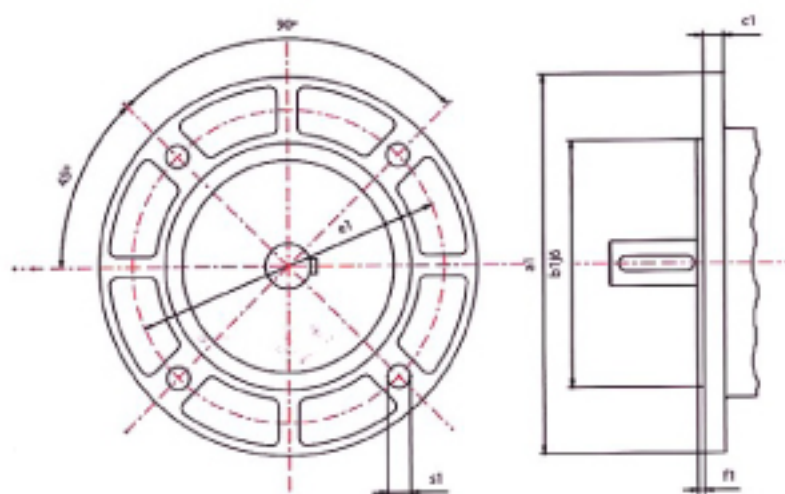
1600 Series Frame Size 112-132 B3



*Only if Force Vent is fitted

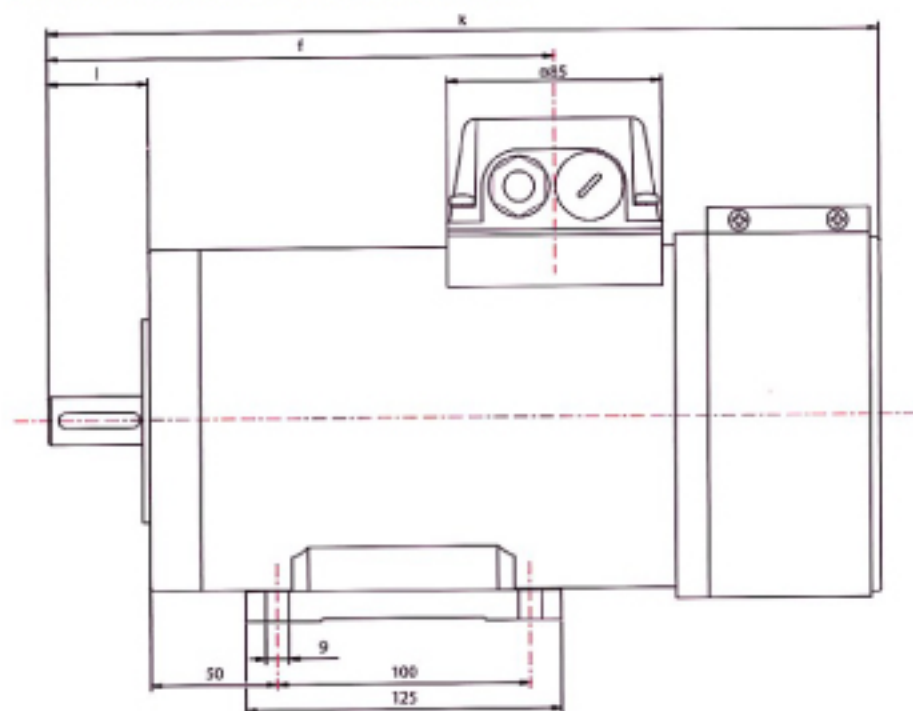
Technodrives Dimensions

1600 Series Flange B5



Frame	a1	b1	c1	e1	f1	s1
A160	160	160	110	130	3.5	10
A200	200	200	130	165	3.5	12
A250	250	250	180	215	4	14
A300	300	300	230	295	4	14

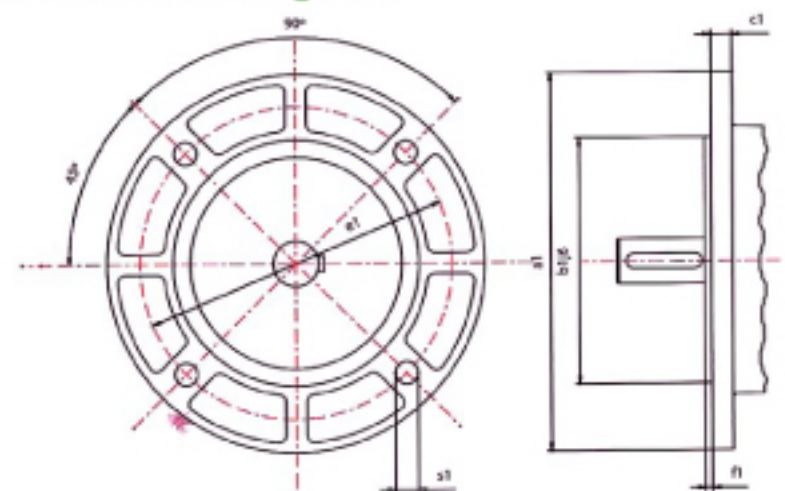
1800 Series Frame Size 80 B3



Extended shaft on non-drive end is an optional extra for fitting of tacho or brake.

Dimension with tacho or brake fitted on request.

1800 Series Flange B5



Frame	Size	Flange f (specify)									
		A1	B1/b	dK6	f	k	l	t	s1 foot	s1 flange	u
80MSH-4	A200	200	130	10K6	200	329	40	21.5	17.5	12	6
80LSH-4	A200	200	130	10K6	250	389	40	21.5	17.5	12	6

Selection Chart
See Over

DC Motors - 0.18kw - 11kw

Selection Chart & Options

Power kW	RPM	Frame	Series No	VA	IA	VF	Choke	Fit Flange and Oil Seal	Extended shaft non-drive end for tachometer or brake mounting	IC06 Forced Ventilation	Protection To IP55	Supply & Fit Brake 205VDC	Supply & Fit 20v/1000rpm DC Tacho	Supply & Fit 30v/1000rpm AC Rectified Tacho
0.18	3000	CM71ES	CR/1612F	180	1.2	PM	●	◆	□	□	□	□	□	□
	2000	CM71ES	CR/1622F	180	1.2	PM	●	◆	□	□	□	□	□	□
	1500	CS71L	CR/1601	180	1.4	210	●	□	□	□	□	□	□	□
0.25	3000	CM71ES	CR/1616F	180	1.7	PM	●	◆	□	□	□	□	□	□
	3000	CS71L	CR/1652	180	1.8	210	●	□	□	□	□	□	□	□
	2000	CM71S	CR/1625F	180	1.7	PM	●	◆	□	□	□	□	□	□
	1500	CS71L	CR/1602	180	1.9	210	●	□	□	□	□	□	□	□
0.37	3000	CM71S	CR/1617F	180	2.4	PM	●	◆	□	□	□	□	□	□
	3000	CS71L	CR/1653	180	2.7	210	LO1*	□	□	□	□	□	□	□
	2000	CM71M	CR/1627F	180	2.5	PM	●	◆	□	□	□	□	□	□
0.55	1500	CM71L	CR/1629F	180	2.5	PM	●	◆	□	□	□	□	□	□
	3000	CM71M	CR/1618F	180	3.4	PM	●	◆	□	□	□	□	□	□
	2000	CM71L	CR/1628F	180	3.6	PM	●	◆	□	□	□	□	□	□
0.75	1500	90L-4	CR/1607	180	4.2	210	●	□	□	□	□	□	□	□
	3000	CM71L	CR/1619F	180	4.8	PM	●	◆	□	□	□	□	□	□
	1500	90L-4	CR/1608	180	5.7	210	LO2*	□	□	□	□	□	□	□
1.1	3000	80MSH-2	CR/1650F	180	7.6	PM	●	◆	□	■	□	□	□	□
	3000	90L-4	CR/1650	180	7.8	210	●	□	□	□	□	□	□	□
	2000	80LSH-2	CR/1651F	180	7.3	PM	●	◆	□	■	□	□	□	□
1.5	1500	100L-4	CR/1610	180	8	210	LO3*	□	□	□	□	□	□	□
	3000	80MSH-2	CR/1660F	180	10.6	PM	LO4*	◆	□	■	□	□	□	□
	3000	90EL-4	CR/1649	180	10.5	210	●	□	□	□	□	□	□	□
	2000	80LSH-2	CR/1661F	180	10	PM	LO4*	◆	□	■	□	□	□	□
2.2	1500	112L-4	CR/1613	180	10.8	210	●	□	□	□	□	□	□	□
	3000	90EL-4	CR/1659	180	15.2	210	LO6*	□	□	□	□	□	□	□
	3000	100L-4	CR/1663	180	15.3	210	LO6*	□	□	□	□	□	□	□
3	1500	112L-4	CR/1614	180	15.8	210	LO5*	□	□	□	□	□	□	□
	3000	112L-4	CR/1666	315	11.6	370	●	□	□	□	□	□	□	□
	1500	132S-4	CR/1670	315	12	370	LO65*	□	□	□	□	□	□	□
4	3000	112L-4	CR/1667	315	15.4	370	LO5*	□	□	□	□	□	□	□
	1500	132M-4	CR/1680	315	15.5	370	●	□	□	□	□	□	□	□
4.5	3000	112L-4	CR/1668	315	17.4	370	LO7*	□	□	□	□	□	□	□
	1500	132M-4	CR/1681	315	17.5	370	LO65*	□	□	□	□	□	□	□
5.5	3000	132M-4	CR/1689	315	23	370	●	□	□	□	□	□	□	□
	1500	132L-4	CR/1690	315	23	370	LO8*	□	□	□	□	□	□	□
7.5	2000	132L-4	CR/1615	315	28	370	LO8*	□	□	□	□	□	□	□
	11	2900	132L-4	CR/3615**	460	28	370	●	□	□	□	□	□	□

The above motors are suitable for use with 1-phase half-controlled thyristor dc controllers with the exception of **CR/3615 that requires a 3-phase fully controlled thyristor bridge.

NB when a brake and tacho are fitted together a force vent must be included.

Brake and tacho together cannot be fitted to frame CM71/CS71/80MSH.

◆ - Standard □ - Option ● - Not required ■ - 1800 series IC06 force ventilation not required. Speed range 100:1 against constant torque

* - The armature choke listed must be used to obtain stated output power.