

LASER ENGRAVING MACHINES

LS 100



GRAVOGRAPH
www.gravograph.com

Innovative solutions for engraving and marking

LS 100

THE COMPACT SOLUTION TO MARKING, ENGRAVING AND CUTTING

- MARKING, ENGRAVING AND CUTTING A WIDE VARIETY OF MATERIALS SUCH AS PLASTICS, WOOD, ACRYLIC, COATED METALS, GLASS, LEATHER.

- IDEAL FOR APPLICATIONS SUCH AS TROPHIES AND AWARDS, THIN MATERIAL CUTTING, PERSONALISATION, SMALL SIGNAGE, GIFT ITEMS, PARTS MARKING, PHOTOGRAPHS, GLASS MARKING.

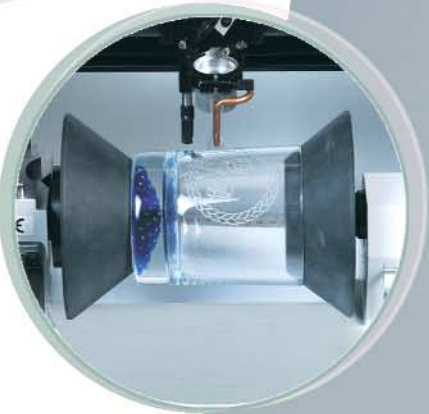
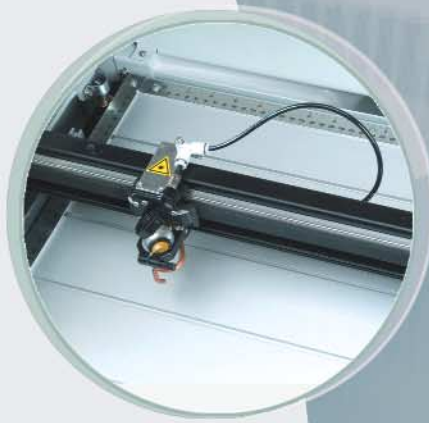
■ A **compact yet versatile and rugged** laser engraver perfect for quick and easy set-up in your retail outlet, office or workshop.

■ **With easy to understand functions, the ergonomically designed** LCD control panel enhances efficiencies and productivity.

■ **Fully equipped** with features such as air assist, auto-focus, and red pointer beam, enabling **quick set-up** for a variety of laser applications.

■ **Optional accessories** including cylindrical attachment, vector cutting table, several exhaust options and integrated air compressor provide the tools to **satisfy your customers' requirements** and **expand your business**.

■ **The GravoStyle software package** makes job creation easier than ever. This user friendly software allows parameters to be saved with the job whilst the advanced functions provide extended capabilities (including barcodes, matrix function, picture, rubber stamp wizards, etc...).



■ **Laser:**

- CO₂ laser source (10,6µm)
- Power range: 30Watts
- Safety: CDRH Class 2 (EN60825)

■ **Size and weight:**

- Dimensions WxHxD
760 x 440 x 725mm (30 x 18 x 29")
- Weight: 43 kg

■ **Engraving capabilities:**

- Engraving area: 460 x 305mm
(18 x 12")
- Z axis travel: 145mm (5.71")

■ **Energy and power supply:**

- 100V-240V AC Supply

■ **Interface:**

- Optional engraving software with integrated driver, GravoStyle 5 Graphic level
- OS: Windows® NT, 2000 or XP

■ **Options and accessories:**

- Integrated and various independent exhaust systems
- Alternate lenses (1.5, 2.5, 3.5, 4" focal length)
- Honeycomb cutting table
- Floating pin table h=30mm (1.18")
- Integrated compressor for air assist
- Rotary device to engrave round parts, maximum diameter 130mm (5.1")



Do not use to process PVC based material - Never leave the machine operating unattended.



Gravograph UK Ltd.
Unit 3 Trojan Business Centre
Tachbrook Park Drive
Leamington Spa
Warcs CV34 6RH
Tel 01926 88 44 33
Fax 01926 88 38 79
Email: info@gravograph.co.uk