



arinc429software

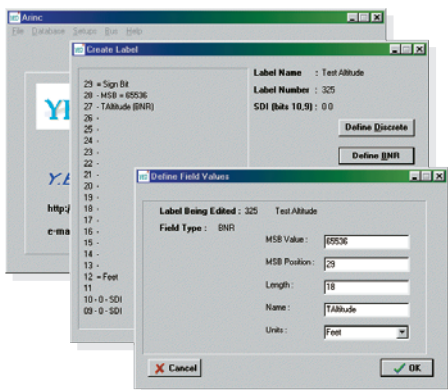
ARINC429 SIMULATION AND DATA ANALYSIS SOFTWARE

When supplied with any of the YED ARINC429 PC cards, this intuitive software package provides the complete solution.

By using the software package you can quickly create and transmit ARINC labels, display labels in real-time and log selected labels to disk for later analysis. The software automatically detects the number of transmitter and receiver channels in the system and configures itself accordingly. The software can control up to a maximum of 8 transmission and 8 reception channels simultaneously.

features

user definable engineering units



- Allows definition of custom Engineering Unit display formats so that data can be viewed and entered in engineering units formats.
- Supported Data conversion formats include: Unsigned Binary, Signed Binary, Two's Compliment Binary, Binary Coded Decimal (BCD) and Discrete data (Flags).
- Standard Equipment Engineering Unit conversions supplied for immediate use.

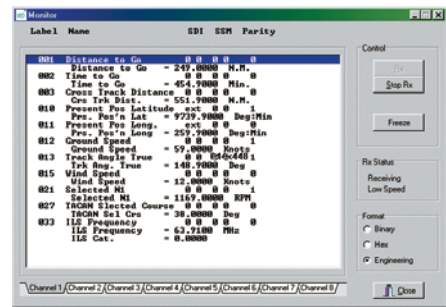


**Windows™ 95/98/NT/
2000/XP compatible**

real time bus activity

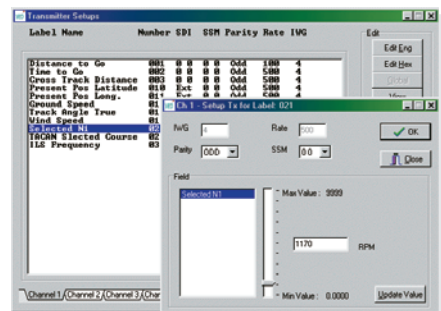
- Displays all ARINC data present on any of the receive channels in Binary and Hexadecimal formats in real time.
- Receive Speed is automatically detected and displayed.

real time monitor - engineering units display



- Displays selected ARINC Labels and their associated data words in either Binary, Hexadecimal and Engineering Units format in real time.
- ARINC Labels (TAGS) selected for display by Channel, Label, SDI and SSM.

real time simulation



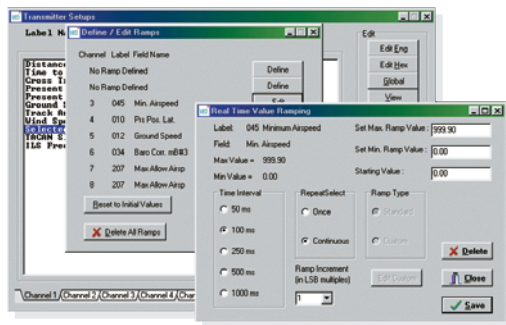
- Real time update of field data in Engineering units or Hexadecimal formats.
- Other programmable features include variable Inter-Word-gaps (IWG - usually set to 4 bit periods), programmable intervals including different embedded rates within a major frame for all labels, programmable Parity, SSM and Data rates.
- Single Shot mode is also supported.



arinc429software

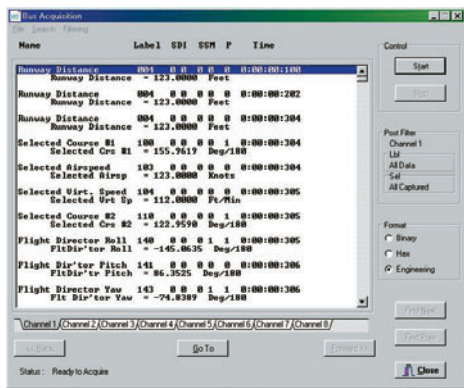
ARINC429 SIMULATION AND DATA ANALYSIS SOFTWARE

ramping



- Selected transmitted label data can be configured so that the field values are automatically ramped up and down during transmission.
- Ideal for running tests where ARINC429 parameters need to be varied between defined limits in order to simulate "live data".

data acquisition to hard disk and review of recorded data

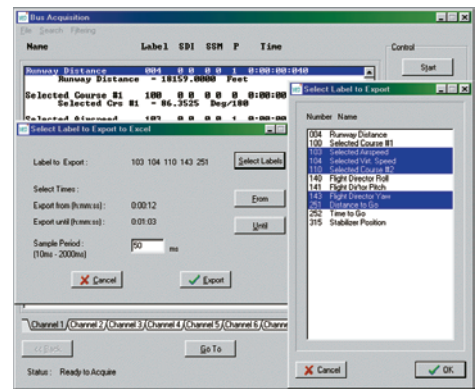


- Enables data to be captured and saved to disk for later redisplay and analysis.
- Post processing allows additional selection criteria to be applied. Additionally only 'Changing Data' can be specified so that only data that has changed in value since the last occurrence is displayed.

- Powerful search function to enable quick location of specific labels. Search is by Label, SDI and SSM. Searches can also be performed where the point of interest can be specified by the occurrence of a data value. The conditions are 'Less than', 'Greater than or Equal to' a given value.

export to spreadsheet

- Captured data can be exported in a file format compatible with Excel™.

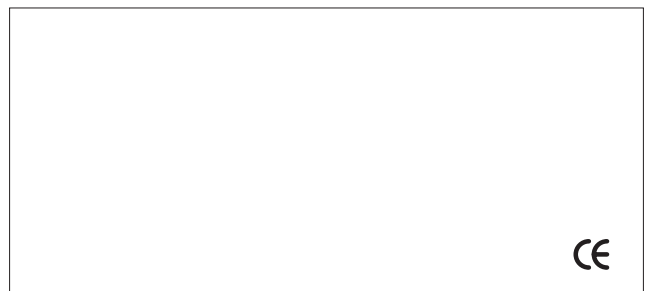


Windows™ 95/98/NT/2000/XP compatible

AVAILABLE for use with the following YED PC cards

- PCI-720 (low cost)
- PCI-MAXI/T2/R2 thru PCI-MAXI/T8/R8
- PC/104/T2/R2

Contact us for a free copy of our demo software!



The information contained in this brochure is subject to change without notice. YED shall not be liable for errors or omissions contained herein. All trademarks are the property of their respective owners.

YED (USA) Limited · Thorne House · Eastville · Yeovil · Somerset BA21 4JD · UK · Tel: +44 (0)1935 411234 · Fax: +44 (0)1935 425036 · E-mail: info@yed.com · Web site: www.yed.com