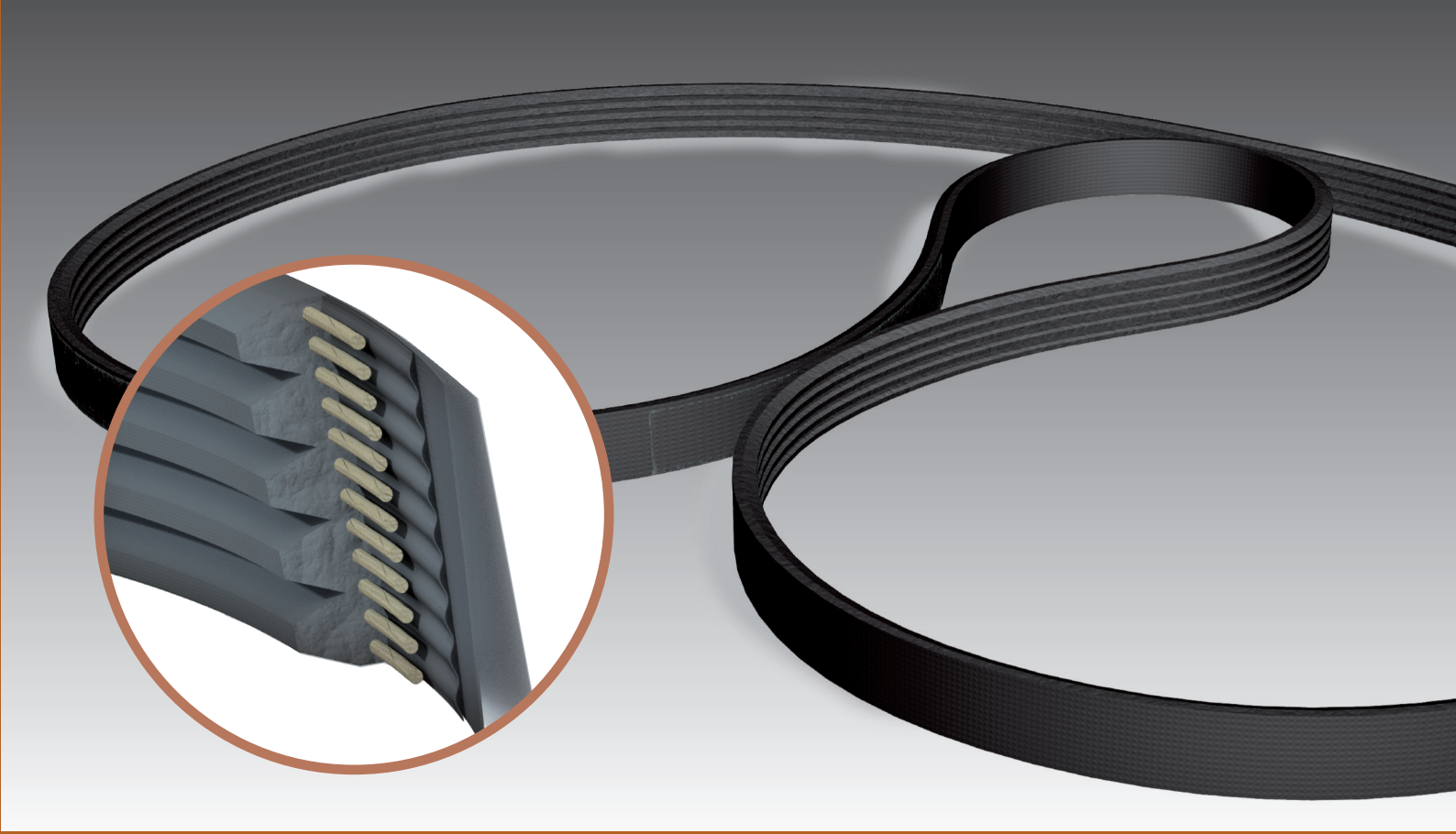


# Megadyne Group:



www.immagine3000.it



## MEGADYNE

## Jason Industrial

### MEGADYNE IS LOCATED IN

- MATHI (ITALY) \*
- TURIN (ITALY)
- VENICE (ITALY)
- MILAN (ITALY) \*
- MINSK (BELARUS)
- PRAGUE (CZECH REPUBLIC)
- PARIS (FRANCE) \*
- ST. JEAN DE MAURIENNE (FRANCE) \*
- LION (FRANCE)
- BORCHEN (GERMANY)
- ULM (GERMANY) \*
- BUDAPEST (HUNGARY)
- BYDGOSZCZ (POLAND)
- BARCELONA (SPAIN) \*
- DUDLEY (UK)
- STOCKHOLM (SWEDEN)
- FOSHAN (CHINA)
- SHANGHAI (CHINA)
- QINGDAO (CHINA) \*
- DUBAI (UAE)
- PINEVILLE-NC (USA) \*
- SAO PAULO (BRASIL)
- NINGBO (CHINA) \*

### JASON IS LOCATED IN

- NEW JERSEY
- ILLINOIS
- CALIFORNIA
- FLORIDA
- TEXAS
- OREGON
- QUEBEC
- ONTARIO
- ALBERTA
- MEXICO
- BRASIL
- SOUTH CAROLINA \*

\* MANUFACTURING FACILITIES

MEGADYNE HEADQUARTER  
Via Trieste 16 - 10075 Mathi (TO) - ITALY  
mail@megadyne.it - www.megadyne.it

# BLACK RIBS

NEW GENERATION POLY-V BELTS





# BLACKRIBS

NEW GENERATION POLY-V BELTS



**Megadyne** is a leading worldwide manufacturer of washing machines belts: Megadyne supplies the main washing machines manufacturers and annually produces several millions belts.

The **manufacturing plant** in Mathi (Italy) has a high production capacity, guaranteeing a continuous supply of high quality products.

## New compound

Completely new polyurethane compound formulation, result of years of continuous improvements and developments of innovative solutions, tested and confirmed in laboratory.

Compound performance dramatically increased with respect previous compound formulation:

- **OUTSTANDING ABRASION LOSS:** - 22 % Respect old formulation (DIN 53516)
- **VERY LOW COMPRESSION SET:** - 35 % Respect old formulation (ASTM D 395 2B)
- **IMPROVED TEAR STRENGTH RESISTANCE:** + 12 % Respect old formulation (ASTM D 624 DieC)
- **INTRINSIC ANTISTATIC FEATURES** (According to ISO 1813)
- **EXCELLENT DYNAMIC PROPERTIES AND FLEX CRACKING RESISTANCE**
- **LOW HEAT BUIL-UP AND LOW HYSTERESIS**
- **EXCELLENT LOW AND HIGH TEMPERATURE PROPERTIES**

## Structure



Our **BLACKRIBS BELTS** are especially suited to washing machines and other domestic appliances.

The **body (1)** of the belt is made from thermoset polyurethane that, due to elastomers, offers a particularly valuable combination of physical and chemicals properties.

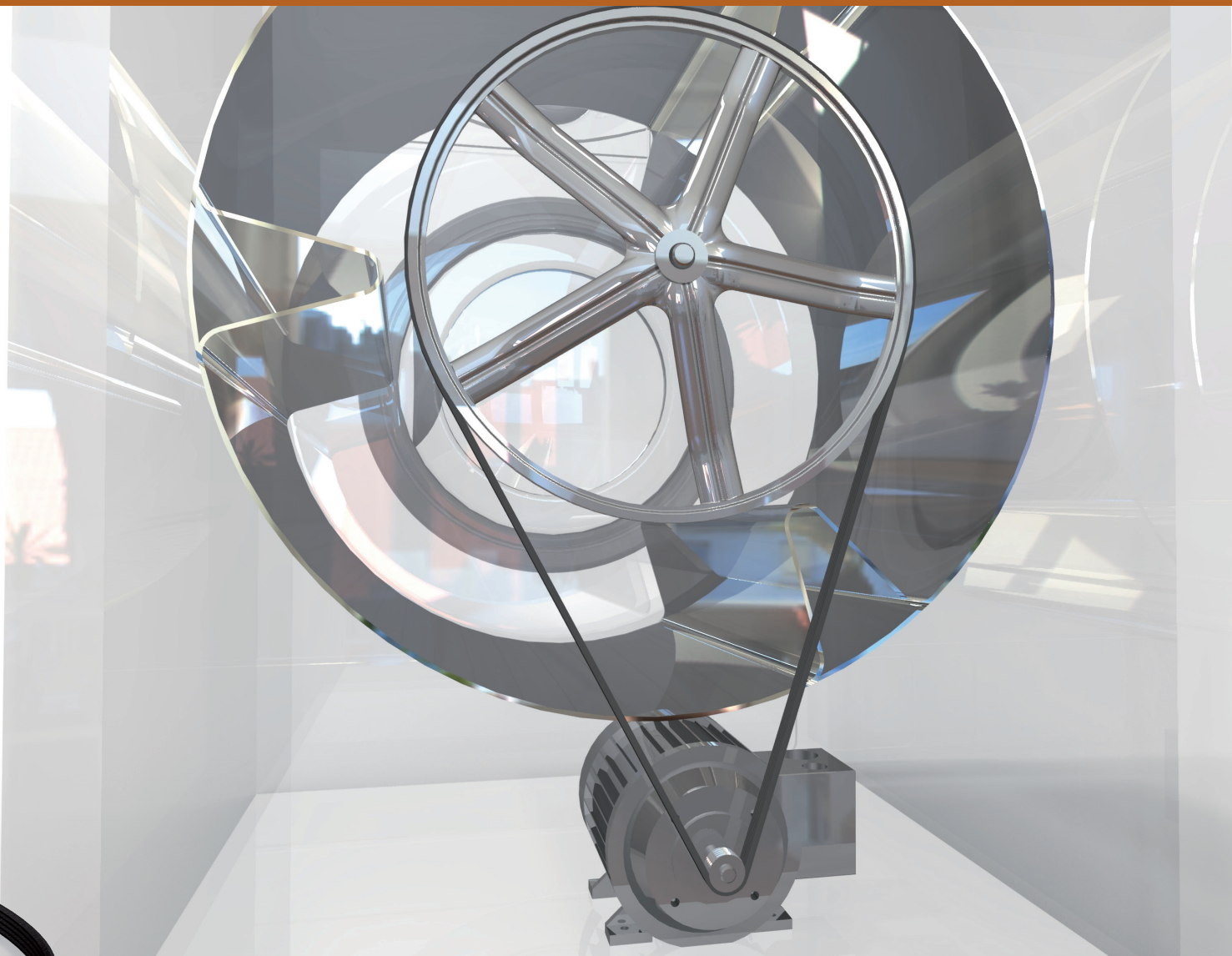
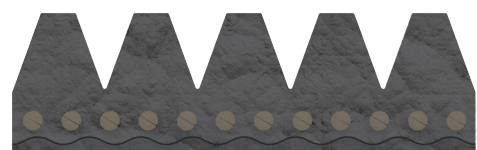
**Cords (2)** are available in two different materials - polyamide (elastic) and polyester (rigid) - giving different properties to **BLACKRIBS BELTS**.

Elastic belts are particularly suitable for washing machines. They can be fitted on fixed centre drives, reducing noise and vibrations.



## Profile

Available profiles for **BLACKRIBS BELTS** are: J - H



## Test on belt

Wide range of test performed on new final product, simulating the most severe working condition and complete lifetime on real application by accelerate endurance test.

### Test 1 - Permanent Deformation

Test performed in order to simulate the machine inactivity under severe condition (24 hrs at 70 °C and 160 N of belt tension). Belt condition checked at the end of the test in a drive pulley flex zone in order to exclude possible ribs permanent deformation and/or excessive thickness variation.

No ribs permanent deformation in the drive pulley flex zone and limited thickness variation due to the very good compression set values of the new compound.

### Test 2 - Dynamic friction on belt

Friction coefficient measured directly on belt in order to define and assure the correct friction value for this new compound.

The **COEFFICIENT OF FRICTION (μ) C.O.F** of new **BLACKRIBS BELTS** has been developed in order to reach a "perfect balance" between:

- Absolute grip
- Long life
- Smooth & silent running
- Wear reduction
- Low heat generation

### Test 3 - Endurance test under extreme working conditions

Extreme severe accelerated life test, in order to evaluate abrasion resistance, wearing resistance, flex fatigue resistance, heat resistance, cord insert flex resistance and adhesion with the PU matrix.

### Test 4 - Endurance test in real application (main test)

Real life test: 2500 no-stop washing cycles on real application, with a complete monitoring of several belt parameters.

#### TEST FEATURES

- 2500 washing cycles
- EL 1200 J5 reference test belt
- E 60 °C washing program
- 1600 rpm centrifuge speed
- 6 Kg maximum load
- Specific load cycles
- 7 test machines
- No stop testing 24hrs\24hrs
- Daily inspection\check

#### BELT IMPROVEMENTS

- Abrasion resistance dramatically increased
- Flex- cracking resistance and flex life enhanced
- Belt life extended
- Improved belt tension retaining
- Silent motion
- Full antistatic body