

SHOPKIT DESIGNS LIMITED
SHOPKIT EXPORT LIMITED
100 Cecil Street · North Watford
Hertfordshire WD24 5AD · England
Tel: +44 (0)1923 818282
Fax: +44 (0)1923 818280
email: sales@shopkit.com
web: www.shopkit.com

SHOPKIT GmbH
Oststr. 36 · 40211 Düsseldorf
Germany
Fon: +49 (0) 211/ 38 69 6-0
Fax: +49 (0) 211/ 38 69 6-24
email: info@shopkit.de
web: www.shopkit.de

B&N INDUSTRIES
1050 Bing Street · San Carlos
California 94070 · U.S.A.
Tel: 001 650 593 4127
Fax: 001 650 593 3112
web: www.bind.com

DAVIES GROUP
Showroom No. 4 · Ground Floor
Garhoud Atrium Building · Garhoud
Dubai · UAE
Tel: +9714 2828528
Fax: +9714 2828328
email: adavies@emirates.net.ae

LOGOGRAFICA INDUSTRIAL, LDA
Rua C – Lote 73-A · Vale do Forno
2675 Odivelas · Portugal
Tel: 0035121 931 2061
Fax: 0035121 931 2045
email: logografica@netc.pt



SHOPKIT
DESIGNS LIMITED



Simply
FURNITURE



Simply
FURNITURE

...to simply furniture

Welcome to the new **Simply Furniture** brochure from Shopkit Designs Limited.

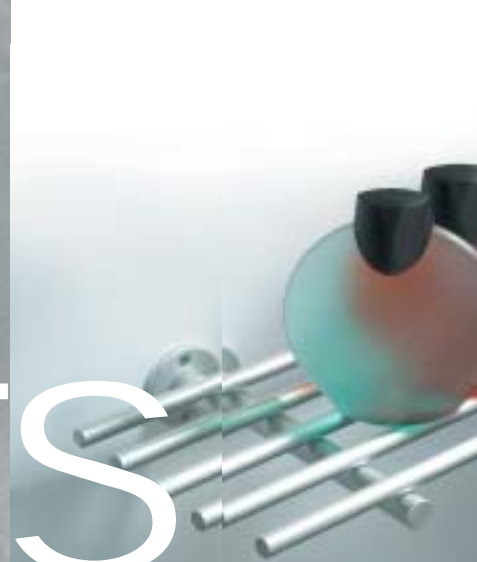
Simply furniture is an exciting new range of fittings and accessories, suitable for domestic, office and commercial use.

Sleek design is combined with superb metal finishes – most products are available in silver satin anodised aluminium and stainless steel, with some items available in coloured aluminium as well.

Included within the range are door knobs and handles, coat hooks and a variety of shelving for kitchen and bathroom. Also available are table legs for glass or wooden tables, curtain on cable and various other bathroom mirror fixings and accessories.

All the products in the range are easy to install and are designed and manufactured by Shopkit Designs.

For further information on any product, including availability and delivery details please contact the Technical Support Department on 01923 818282 or look at our web site: www.simplyfurniture.co.uk



2	Bathrooms
6	Shelving Systems
10	Shelves and Mountings
12	Hooks and Pegs
16	Handles and Knobs
18	Tables and Table Legs
20	Interior Fittings
22	Curtain Cable

BATHROOMS

B . A . c l e a n a n d s i m p l e

A range of bathroom accessories including toilet roll holders, toothbrush holders, soap dishes, towel rails etc. simple to fit. All finished in satin anodised aluminium. Various options can be created by our Technical department.



TR/T720 Twin towel rail (720mm overall)



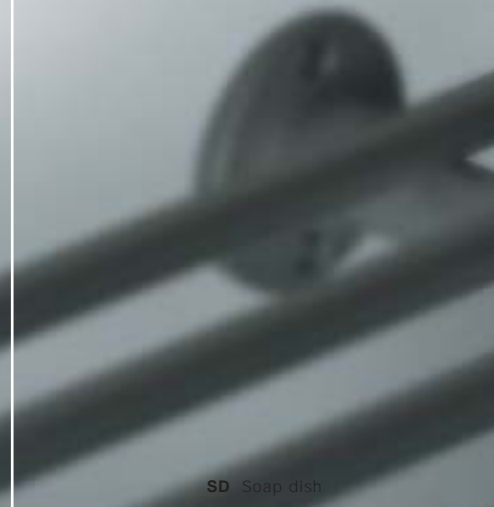
TBH/4 Toothbrush holder



TRH/AA Toilet roll holder - angled arm



RS/5B Rod shelf - 5 bar



SD Soap dish



BRS Bathroom on a stick



CH Cup holder

BATHROOMS



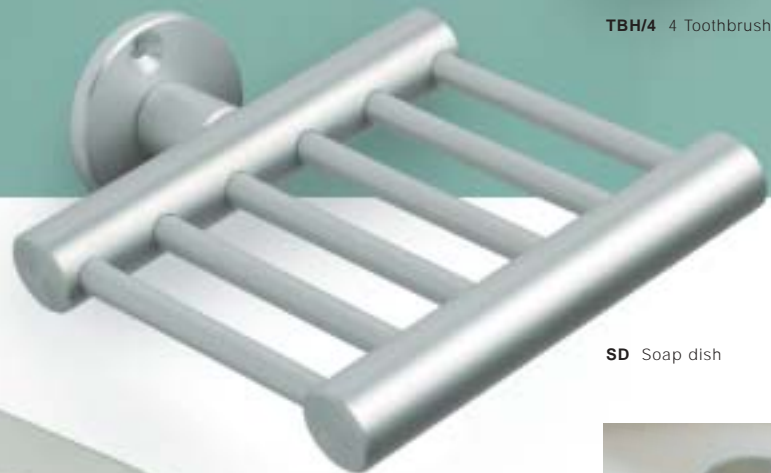
TRH/T Twin toilet roll holder (170mm overall)

TRH/AA Toilet roll holder - angled arm (135mm overall)

TBH/4 4 Toothbrush holder



CH Cup holder



SD Soap dish



TBH/2 2 Toothbrush holder



GSR Glass shelf rail



Typical co-ordinated bathroom installation



TR/S Single towel rail. (available in 720mm or 520mm lengths overall)

TR/T Twin towel rail (available in 720mm or 520mm lengths overall)

BRS Bathroom stick. Several options are available. Comes in satin anodised aluminium as standard. Stainless steel available on certain items only.

We can design and manufacture any components to clients' specification

SHELVING systems

A unique range of shelving systems created for use in either commercial or home interiors.

These systems are available with various shelf materials – wood (solid and slatted), glass, metal or slatted anodised aluminium.

The Mast shelving range can be tailored to your requirements.



SU/WF Wall fixed shelving system. Manufactured from satin anodised aluminium. Standard height option 2200mm high. Maximum glass shelf length 1500mm. The unit shown here incorporates 1000mm x 300mm x 8mm thick glass shelving.

Timber or metal shelves can also be supplied

MM/2/1 Mini Mast shelving system incorporates a unique vertical mast, in silver powder coated finish, with various shelving options (shown on following pages) supported on tensioned cables.

Mast shelving can be tailored to clients' specification – please ask our technical department for help and assistance

SHELVING

s y s t e m s



Twin rig Mast System
Shown in a floor to ceiling installation.

Please refer to our Mast brochure for additional installation options and product information.



SU/FS Free standing stainless steel shelving unit. Unit shown is 1850mm high x 1100mm wide, with cross frame stabiliser, extended and standard length 10mm glass shelves



Detail of cross frame stabiliser



Top section of Single Rig Mast, wall fixed.



SHELVES

and mountings

A range of easy to assemble shelves for individual wall mounted locations, using support brackets shown below or for integrating with wall shelving systems as shown on previous pages.



GSC/CB Chromed brass shelf clamp



GSC/SA Satin anodised aluminium shelf clamp



MA.1 Standard glass shelf



MA.3 Slatted wood shelf



MA.4 Slatted aluminium shelf



GSB/S Glass shelf support bracket - slot style

GSB/G Glass shelf support bracket - grip style



RS/5B Rod shelf - 5 bar

GSB/G Glass shelf support bracket - grip style



GSR Glass shelf rail. Available in satin anodised aluminium or stainless steel

HOOKS and coatstands

A comprehensive range of hooks, pegs and coatstands with an integrated design approach for ease of use in the home or business environments such as hotels, health clubs or any environment where a strong visual identity is required.



TP/P Towel peg prong



CH/4P Coat hook4 peg



CS/SA Coat stand in a spiral configuration with anodised finish

Feature picture:
CS/SSP Coat stand in an 90° axis configuration in a polished stainless steel finish

HOOKS



CH/4P Coat hook 4 peg



GPH General purpose hook



TP/P Towel peg
prong style



CHP Clothes hook
with pin



CHD/135 Clothes hook
with disc



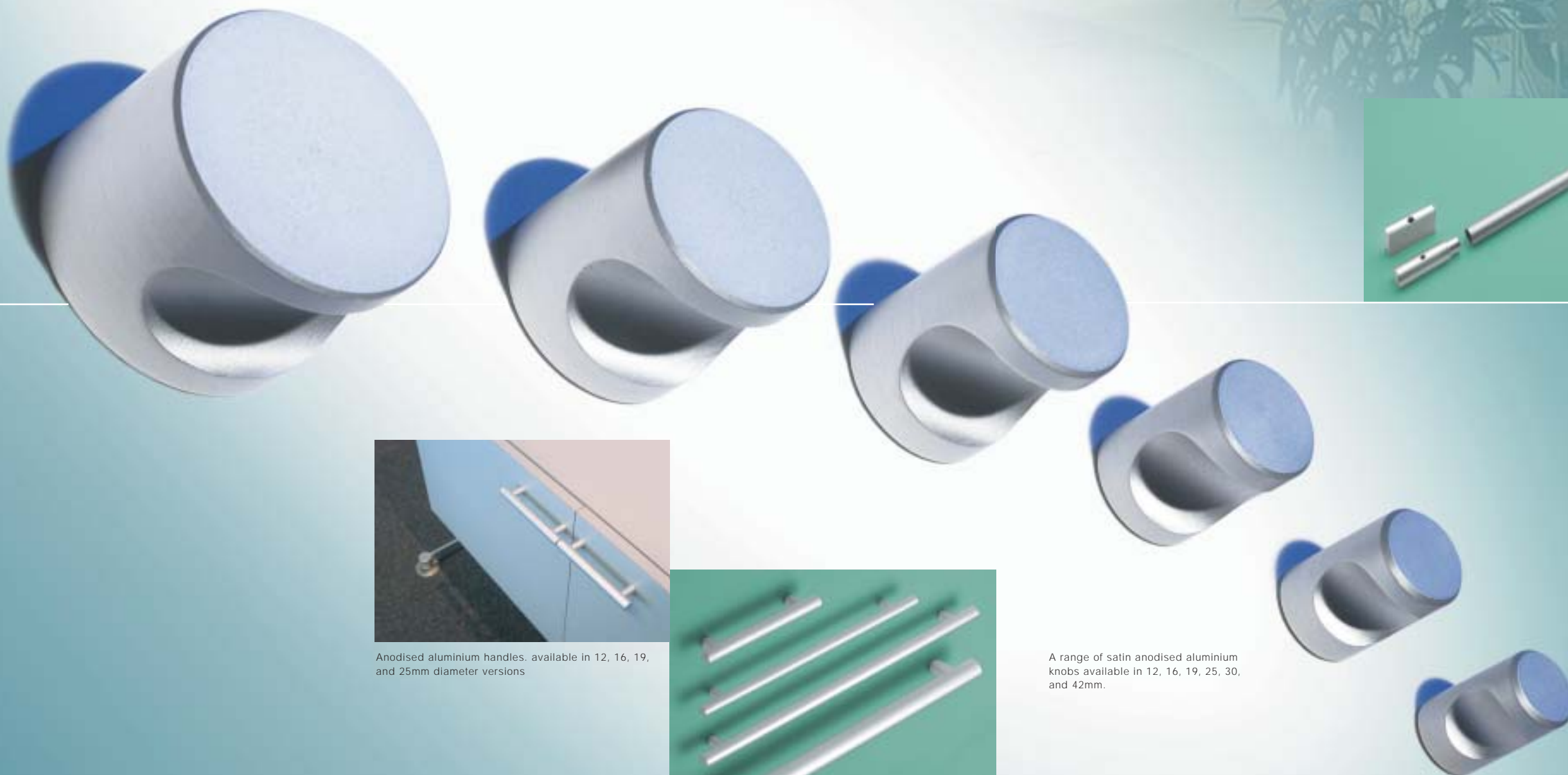
Top and left:
CS/SSP Coat stand in a
90° axis configuration in a
polished stainless steel finish

Above:
CS/SSP Coat stand in a spiral
configuration in a polished
stainless steel finish

HANDLES and knobs

A range of handles and knobs for cupboard doors in domestic, office and commercial use.

All handles are available in 150mm, 200mm, 300mm, 400mm and 600mm lengths. Special lengths are available on request. (Please refer to Simply Furniture Price List for details)



Anodised aluminium handles. available in 12, 16, 19, and 25mm diameter versions



A range of satin anodised aluminium knobs available in 12, 16, 19, 25, 30, and 42mm.



BH/SA Block handle components

Block handles in situs



TABLES and legs

A range of table legs constructed from stainless steel with adjustable foot and designed in two versions to suit either glass or solid top tables.

All legs come in a variety of lengths and diameters. (Please refer to Simply Furniture Price List for details).



CT Glass coffee table - 900mm x 900mm stainless steel frame with stainless steel cross frame stabilizer and 1200mm x 1200mm safety glass top.

Simply Furniture will make tables and reception desks to your specifications. Please contact our Technical Department for help and advise.



Legs mounted to a circular glass top table



Custom made bars and reception desks



Legs mounted to a rectangular glass top table



Table legs for either glass or solid timber/laminate tops

INTERIOR f i t t i n g s a n d a c c e s s o r i e s

A range of mirror fixings in three sizes and two styles. Either edge fixed (see main picture) suitable for holding material up to 10mm in thickness or fixed through the panel/glass. This method requires the panel to be drilled. These fixings can also clamp 2 sheets of glass to mount pictures.



SF/3/26 Wall fixed panel/mirror support in satin anodised aluminium finish – 30mm diameter

SF/15/27 Wall fixed panel/mirror support in polished stainless steel finish – 19mm diameter



SF/3/29 Wall fixed panel/mirror support in satin anodised aluminium finish – 30mm diameter. Will hold picture/panels/mirrors up to 10mm in thickness. No drilling of panel required



C/G Glass wall clock approximately 400mm diameter. Hand made glass surround. Battery operated



SF/15/27 Wall fixed panel support, disc diameter 19mm, will hold picture or panels up to 10mm in thickness. Requires 13mm hole drilling in panels



PF Desk top picture frame. A free standing picture frame made from two 5mm sheets of acrylic with satin anodised aluminium or polished stainless steel fittings. All sizes – made to order. Please contact our Technical Department



CURTAIN cable

Easy to fix curtain cable system. Maximum length without support approximately 900mm. Our Technical Department will design a curtain support system in cable or rod to suit any site installation, if required.



CCK Curtain on cable kit



HRK Stainless steel hanging rail. 1200mm long supported on 3mm stainless steel cable system – can be fixed floor to ceiling. Other options to suit your requirements can be made to order. Please contact our Technical Department for help and advice

Special cutters for 3mm cable will be required and are available from our Sales Department





Cable & Rod Components



Mast 1, 2, 3 and Track Systems



Mast Screen System



Fin System



TZ Low Voltage Lighting System



Glass Cabinet Components



SignKit Signage Systems



Tensioned Support Structures



Panel fixings



Website

Brochures detailing other ranges from **Shopkit Designs Ltd.**

For further information

phone: 01923 818282

fax: 01923 818280

email: info@shopkit.com

website: www.shopkit.com