

TECHNICAL DESCRIPTION
AL.SK190 & AL.SK350 LIFTING MACHINES

ALE 
SMARTER, SAFER, STRONGER



3	Introduction
3	Specification of AL.SK190, AL.SK350 & AL.SK350 with Fixed Jib
4	Mobilization, Relocation, Ballast, Ground Bearing Pressures & Rigging
5	Operational Detail & View of AL.SK190, AL.SK350 & AL.SK350 with Fixed Jib
6	AL.SK190 Graphical Illustration
7	AL.SK190 General Arrangement
8-9	AL.SK190 Duty Charts, 22.8m Ballast to Mast Foot
10-11	AL.SK190 Duty Charts, 32.1m Ballast to Mast Foot
12	AL.SK190 Duty Chart, 22.8m Quick Winch System
13	AL.SK190 Duty Chart, 32.1m Quick Winch System
14	AL.SK350 Graphical Illustration
15	AL.SK350 General Arrangement
16-17	AL.SK350 Duty Charts, 30.7m Ballast to Mast Foot
18-19	AL.SK350 Duty Charts, 40.0m Ballast to Mast Foot
20-21	AL.SK350 Duty Charts, 49.2m Ballast to Mast Foot
22	AL.SK350 Duty Chart, 40.0m Quick Winch System
23	AL.SK350 Duty Chart, 49.2m Quick Winch System
24	AL.SK350 with Jib Graphical Illustration
25	AL.SK350 with Jib General Arrangement
26-27	AL.SK350 with Jib Duty Charts, 30.7m Ballast to Mast Foot
28-29	AL.SK350 with Jib Duty Charts, 40.0m Ballast to Mast Foot
30-31	AL.SK350 with Jib Duty Charts, 49.2m Ballast to Mast Foot

The AL.SK190 and AL.SK350 lifting machines are devices that have been designed for the lifting and installation of ultra heavy loads. They can be equipped with a standard quick winch system for weights of up to 600t and a strand jack lifting system for loads of up to 5000t.

AL.SK190

Lifting Capacity	>4300t strand lift system
Lifting Capacity	600t quick winch system
Load Moment	190,000tm
Ballast to Mast Foot*	22.8m, 32.1m
Main Mast*	61.2m, 72.7m, 84.2m, 95.6m, 107.0m, 118.5m, 129.9m, 141.3m

AL.SK350

Lifting Capacity	5000t strand lift system
Lifting Capacity	600t quick winch system
Load Moment	354,000tm
Ballast to Mast Foot*	30.7m, 40.0m, 49.2m
Main Mast*	60.8m, 72.4m, 84.0m, 95.4m, 106.9m, 118.3m, 129.8m, 141.2m

AL.SK350 with Fixed Jib

Lifting Capacity	5000t strand lift system
Lifting Capacity	600t quick winch system
Load Moment	354,000tm
Ballast to Mast Foot*	30.7m, 40.0m, 49.2m
Main Mast*	52.1m, 63.7m, 75.3m, 86.7m, 98.2m, 109.6m, 121.1m, 132.5m
Fixed Jib*	41m long @ 10° or 15° to main mast

* These are primary configurations. Intermediate and extended configurations are also available.



Mobilization

The AL.SK190 & AL.SK350 are transported mainly in standard ISO 20' and 40' shipping containers with maximum weight of 36t.

Relocation

The AL.SK machines can be relocated on site fully assembled and rigged, by skidding or by self-propelled modular transporters (SPMTs).

Ballast

The AL.SK machines are based on utilisation of locally available ballast material. This is intended to be readily available material depending upon location, for example sand, gravel or other suitable weights or mass.

Special reinforced 40' open-topped containers are used for the ballast material, filled by standard mechanical shovel. Weight of each filled container is 100t.

Ground Bearing Pressures

With specialist load-spreading systems and hydraulics beneath the AL.SK machines, ground bearing pressures are kept to a minimum.

For AL.SK190 and AL.SK350, maximum ground bearing pressures beneath the ballast are as follows:

- 2000t ballast = 10.9t/m², 2500t ballast = 13.3t/m²,
- 3000t ballast = 15.7t/m², 3500t ballast = 18.1t/m²,
- 4000t ballast = 20.4t/m²

Average ground bearing pressure beneath mast foot = circa 25t/m²
Ground bearing pressures are dependant upon load.

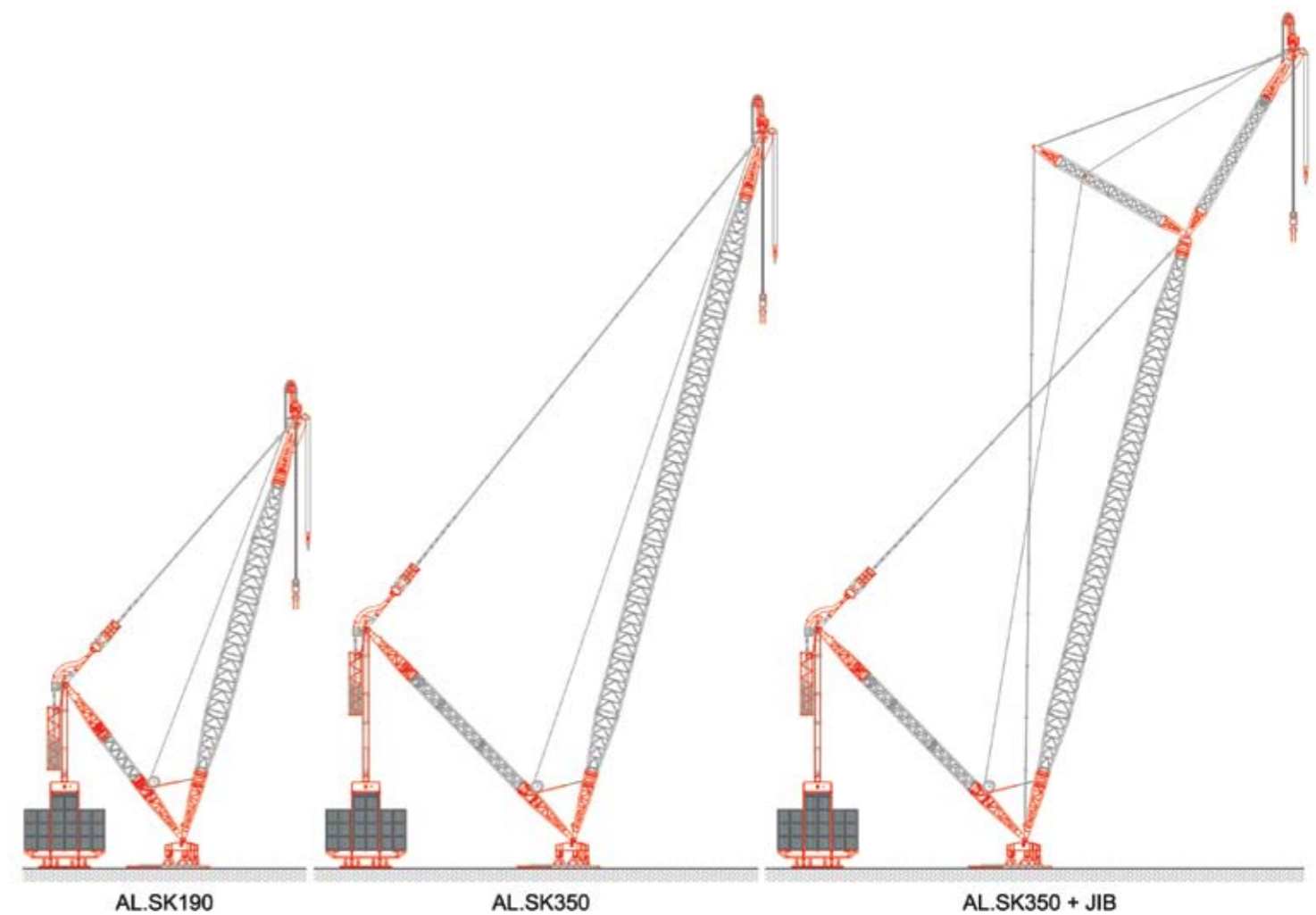
Rigging

The AL.SK machines come with a standard set of lifting tackle for erection. ALE has standard lifting rigging available for weights up to 1000t. For weights over 1000t, ALE will provide rigging engineering and support.

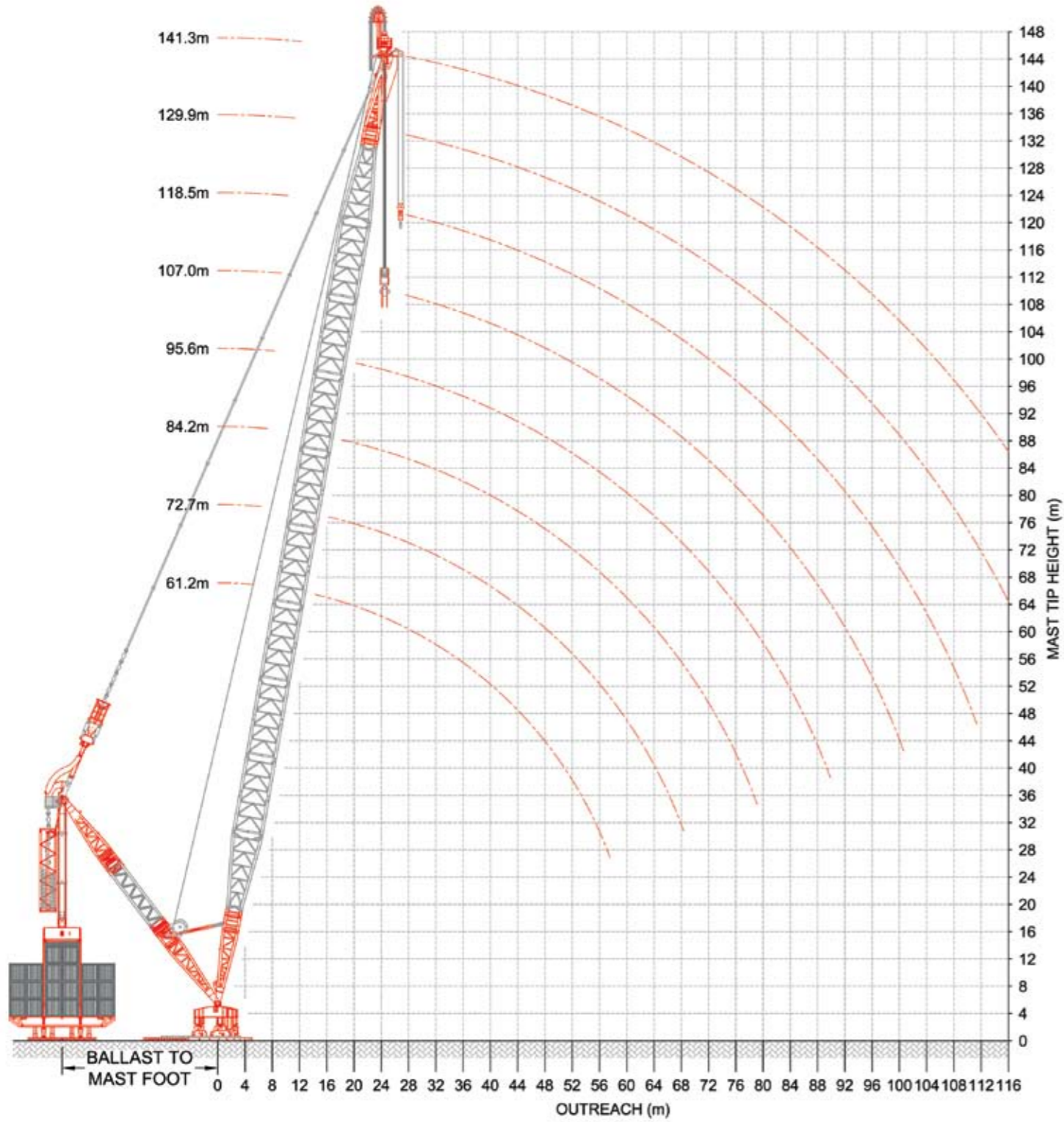
Operational Speeds

- Lifting Speed – Strand Lift System = 10m per hour
- Lifting Speed – Quick Winch System = 150m per hour
- Slewing Speed = 28m per hour loaded, 50m unloaded

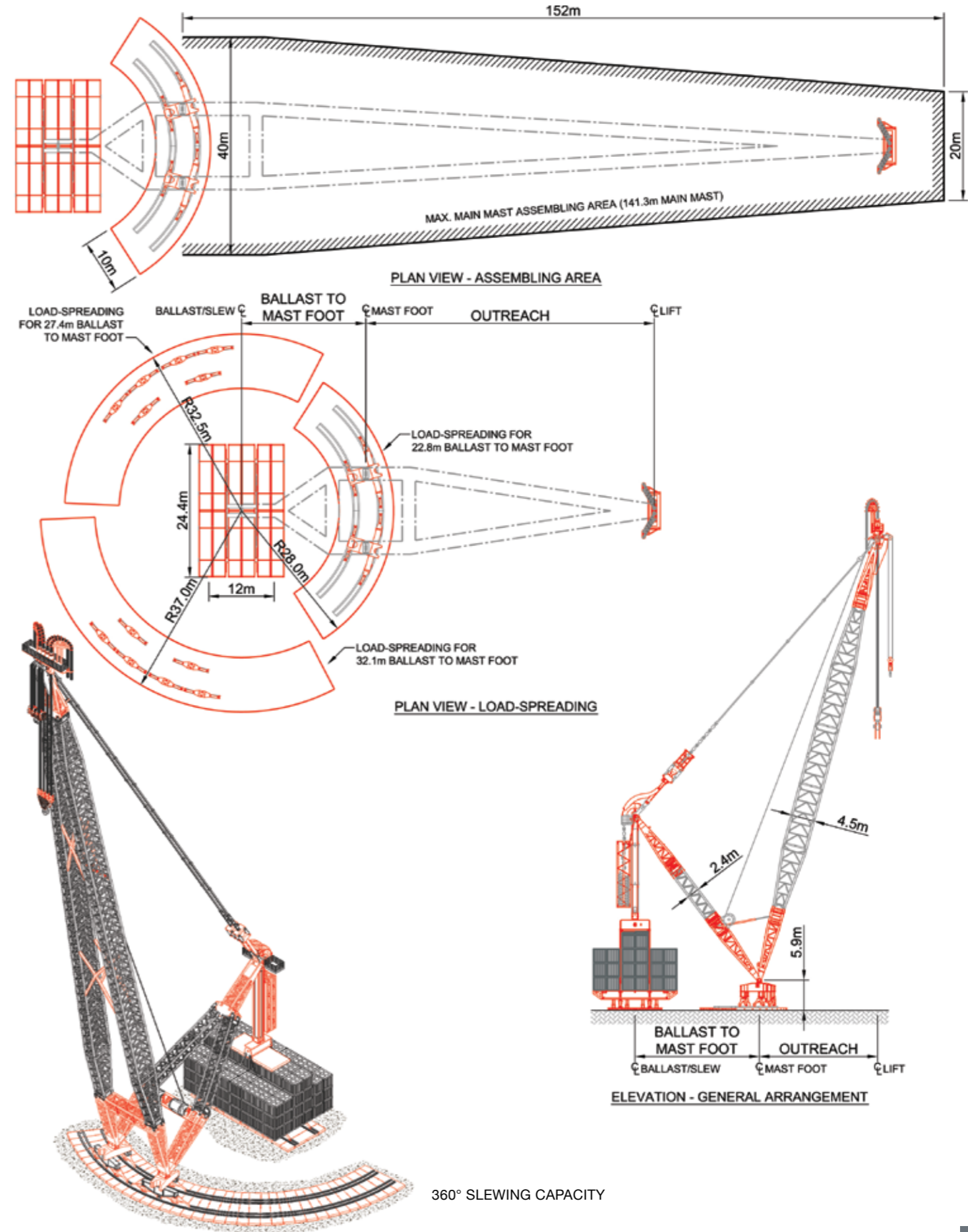
AL.SK190 & AL.SK350 GENERAL ARRANGEMENTS



AL.SK190



AL.SK190



AL.SK190	61.2m Main Mast				
	22.8m Ballast to Mast Foot				
	Outreach (m)	2000t Ballast	2500t Ballast	3000t Ballast	3500t Ballast
12	2999	3666	3903	3903	3903
14	2541	3133	3682	3682	3682
16	2197	2715	3210	3483	3483
18	1930	2390	2851	3288	3303
20	1716	2130	2545	2959	3170
22	1556	1918	2294	2671	3020
24	1410	1740	2086	2431	2776
26	1286	1595	1909	2227	2546
28	1180	1476	1757	2053	2349
30	1088	1364	1626	1902	2178
32	1008	1267	1526	1770	2029
34	936	1180	1424	1653	1897
36	873	1103	1334	1564	1779
38	816	1034	1253	1471	1674
40	765	972	1180	1387	1580
42	719	916	1114	1311	1452
44	677	865	1053	1242	1335
46	638	818	999	1179	1227
48	603	775	948	1121	1127
50	570	736	902	1033	1033
52	540	699	859	944	944
54	512	665	819	859	859
56	485	633	774	774	774
58	-	-	-	-	-
60	-	-	-	-	-
64	-	-	-	-	-
68	-	-	-	-	-
72	-	-	-	-	-
76	-	-	-	-	-
80	-	-	-	-	-
84	-	-	-	-	-
88	-	-	-	-	-

AL.SK190	72.7m Main Mast				
	22.8m Ballast to Mast Foot				
	Outreach (m)	2000t Ballast	2500t Ballast	3000t Ballast	3500t Ballast
12	-	-	-	-	-
14	2534	3126	3620	3620	3620
16	2189	2707	3199	3423	3423
18	1921	2381	2842	3245	3245
20	1706	2121	2535	2949	3118
22	1546	1907	2284	2660	2970
24	1400	1729	2074	2420	2765
26	1276	1595	1897	2216	2535
28	1169	1465	1745	2041	2337
30	1077	1353	1614	1890	2166
32	996	1255	1514	1757	2016
34	925	1169	1413	1640	1884
36	862	1092	1322	1552	1766
38	805	1023	1241	1459	1661
40	754	961	1168	1375	1582
42	707	905	1102	1299	1497
44	665	853	1042	1230	1418
46	627	807	987	1167	1347
48	591	764	936	1109	1282
50	558	724	890	1056	1221
52	528	688	847	1006	1147
54	500	654	807	961	1063
56	474	622	770	918	984
58	450	593	736	879	911
60	427	565	703	840	840
64	386	515	645	709	709
68	349	471	580	580	580
72	-	-	-	-	-
76	-	-	-	-	-
80	-	-	-	-	-
84	-	-	-	-	-
88	-	-	-	-	-

AL.SK190	84.2m Main Mast				
	22.8m Ballast to Mast Foot				
	Outreach (m)	2000t Ballast	2500t Ballast	3000t Ballast	3500t Ballast
12	-	-	-	-	-
14	-	-	-	-	-
16	2178	2696	3195	3363	3363
18	1909	2370	2830	3195	3195
20	1694	2108	2523	2937	3065
22	1535	1894	2271	2648	2920
24	1388	1716	2061	2407	2752
26	1263	1582	1884	2202	2521
28	1157	1453	1732	2028	2323
30	1064	1340	1600	1876	2152
32	983	1242	1501	1743	2002
34	912	1155	1399	1626	1870
36	848	1078	1309	1539	1752
38	791	1009	1227	1445	1647
40	740	947	1154	1361	1569
42	694	891	1088	1285	1483
44	651	840	1028	1216	1405
46	613	793	973	1153	1333
48	577	750	923	1095	1268
50	545	710	876	1042	1208
52	515	674	833	993	1152
54	487	640	793	947	1100
56	461	609	757	905	1052
58	436	579	722	865	1008
60	414	552	690	828	966
64	372	502	631	761	857
68	336	458	580	702	740
72	303	418	533	633	633
76	274	383	492	532	532
80	-	-	-	-	-
84	-	-	-	-	-
88	-	-	-	-	-

AL.SK190	95.6m Main Mast				
	22.8m Ballast to Mast Foot				
	Outreach (m)	2000t Ballast	2500t Ballast	3000t Ballast	3500t Ballast
12	-	-	-	-	-
14	-	-	-	-	-
16	-	-	-	-	-
18	1897	2357	2817	3170	3170
20	1681	2095	2509	2924	3013
22	1522	1881	2257	2634	2869
24	1375	1702	2047	2392	2737
26	1250	1569	1869	2188	2507
28	1143	1439	1717	2013	2309
30	1050	1326	1595	1861	2137
32	969	1228	1487	1728	1987
34	897	1141	1385	1611	1854
36	834	1064	1294	1524	1737
38	777	995	1213	1431	1631
40	725	933	1140	1347	1554
42	679	876	1074	1271	1468
44	637	825	1013	1202	1390
46	598	778	958	1138	1319
48	563	735	908	1080	1253
50	530	696	861	1027	1193
52	500	659	818	978	1137
54	472	625	779	932	1086
56	446	594	742	890	1038
58	422	564	707	850	993
60	399	537	675	813	951
64	358	487	617	746	876
68	321	443	565	687	809
72	289	404	519	634	743
76	260	369	478	587	646
80	232	337	440	544	557
84	205	308	406	473	473
88	181	281	375	392	392

AL.SK190	107.0m Main Mast				
	22.8m Ballast to Mast Foot				
	Outreach (m)	2000t Ballast	2500t Ballast	3000t Ballast	3500t Ballast
20	1666	2080	2495	2909	2960
22	1508	1866	2242	2619	2818
24	1360	1687	2032	2377	2687
26	1235	1554	1854	2172	2491
28	1128	1424	1701	1997	2293
30	1035	1312	1588	1845	2121
32	954	1213	1472	1712	1971
34	882	1126	1370	1595	1838
36	818	1049	1279	1509	1720
38	761	979	1197	1415	1614
40	710	917	1124	1331	1538
42	663	861	1058	1255	1452
44	621	809	998	1186	1374
46	582	762	942	1123	1303
48	547	719	892	1065	1237
50	514	680	845	1011	1177
52	484	643	803	962	1121
54	456	609	763	916	1070
56	430	578	726	874	1022
58	406	548	691	834	977
60	383	521	659	797	935
64	342	471	601	730	860
68	306	427	549	671	793
72	273	388	503	618	733
76	242	353	462	571	680
80	213	321	425	529	632
84	187	293	391	490	588
88	163	266	360	455	543
92	141	240	332	412	492
96	120	215	306	375	443
100	101	192	278	338	392
104	-	-	-	-	-
108	-	-	-	-	-
112	-	-	-	-	-
116	-	-	-	-	-
120	-	-	-	-	-
124	-	-	-	-	-
128	-	-	-	-	-

AL.SK190	118.5m Main Mast				
	22.8m Ballast to Mast Foot				
	Outreach (m)	2000t Ballast	2500t Ballast	3000t Ballast	3500t Ballast
20	-	-	-	-	-
22	1494	1850	2227	2604	2767
24	1346	1671	2016	2361	2638
26	1220	1539	1838	2157	2475
28	1113	1409	1685	1981	2277
30	1020	1296	1572	1829	2105
32	939	1197	1456	1695	1954
34	867	1110	1354	1595	1821
36	803	1033	1263	1493	1703
38	745	963	1182	1400	1598
40	694	901	1108	1315	1523
42	647	845	1042	1239	1436
44	605	793	981	1170	1358
46	566	746	926	1106	1287
48	530	703	876	1048	1221
50	498	663	829	995	1161
52	468	627	786	946	1105
54	440	593	746	900	1053
56	413	561	709	857	1005
58	389	532	675	818	961
60	367	505	643	781	919
64	325	455	584	714	843
68	289	411	533	655	777
72	254	372	487	602	717
76	222	337	446	555	664
80	193	305	409	512	616
84	167	276	375	474	572
88	143	247	344	439	533
92	121	220	316	406	497
96	101	196	290	377	462
100	82	173	264	349	421
104	65	152	240	324	387
108	48	133	217	298	353
112	-	-	-	-	-
116	-	-	-	-	-
120	-	-	-	-	-
124	-	-	-	-	-
128	-	-	-	-	-

AL.SK190	129.9m Main Mast				
	22.8m Ballast to Mast Foot				
	Outreach (m)	2000t Ballast	2500t Ballast	3000t Ballast	3500t Ballast
20	-	-	-	-	-
22	-	-	-	-	-
24	-	1652	1997	2342	2395
26	-	1521	1818	2137	2294
28	-	1390	1665	1961	2200
30	-	1277	1554	1809	2085
32	-	1179	1438	1675	1934
34	-	109			

AL.SK190	61.2m Main Mast				
	32.1m Ballast to Mast Foot				
	Outreach (m)	2000t Ballast	2500t Ballast	3000t Ballast	3500t Ballast
12	4235	4318	4318	4318	4318
14	3593	4125	4125	4125	4125
16	3136	3915	3947	3947	3947
18	2762	3451	3783	3783	3783
20	2462	3104	3632	3632	3632
22	2217	2801	3361	3491	3491
24	2013	2548	3083	3361	3361
26	1840	2334	2828	3239	3239
28	1692	2150	2609	3068	3152
30	1587	1991	2420	2848	3045
32	1475	1852	2254	2655	2878
34	1376	1729	2107	2485	2649
36	1288	1620	1977	2334	2442
38	1209	1547	1861	2199	2255
40	1138	1459	1756	2077	2084
42	1074	1380	1661	1926	1926
44	1015	1307	1599	1779	1779
46	962	1241	1521	1641	1641
48	913	1181	1449	1538	1538
50	868	1125	1382	1413	1413
52	827	1074	1292	1292	1292
54	800	1027	1172	1172	1172
56	765	983	1050	1050	1050
58	-	-	-	-	-
60	-	-	-	-	-
64	-	-	-	-	-
68	-	-	-	-	-
72	-	-	-	-	-
76	-	-	-	-	-
80	-	-	-	-	-
84	-	-	-	-	-
88	-	-	-	-	-

AL.SK190	72.7m Main Mast				
	32.1m Ballast to Mast Foot				
	Outreach (m)	2000t Ballast	2500t Ballast	3000t Ballast	3500t Ballast
12	-	-	-	-	-
14	3561	4048	4048	4048	4048
16	3106	3873	3873	3873	3873
18	2732	3418	3712	3712	3712
20	2432	3074	3562	3562	3562
22	2187	2771	3327	3423	3423
24	1982	2518	3053	3294	3294
26	1809	2303	2798	3203	3203
28	1661	2120	2579	3038	3091
30	1560	1961	2389	2817	2985
32	1447	1822	2223	2624	2886
34	1348	1699	2077	2454	2793
36	1260	1601	1946	2303	2657
38	1181	1519	1830	2168	2473
40	1110	1431	1725	2046	2305
42	1046	1352	1630	1936	2152
44	987	1279	1571	1836	2011
46	934	1213	1492	1745	1880
48	885	1153	1420	1661	1757
50	840	1097	1354	1601	1643
52	800	1046	1293	1540	1566
54	774	998	1236	1464	1464
56	738	954	1183	1366	1366
58	705	913	1134	1272	1272
60	674	874	1089	1181	1181
64	618	805	1003	1003	1003
68	568	757	819	819	819
72	-	-	-	-	-
76	-	-	-	-	-
80	-	-	-	-	-
84	-	-	-	-	-
88	-	-	-	-	-

AL.SK190	84.2m Main Mast				
	32.1m Ballast to Mast Foot				
	Outreach (m)	2000t Ballast	2500t Ballast	3000t Ballast	3500t Ballast
12	-	-	-	-	-
14	-	-	-	-	-
16	3080	3800	3800	3800	3800
18	2705	3388	3641	3641	3641
20	2404	3047	3494	3494	3494
22	2159	2743	3297	3357	3357
24	1954	2489	3025	3229	3229
26	1781	2275	2769	3143	3143
28	1633	2091	2550	3009	3032
30	1534	1932	2360	2789	2927
32	1421	1793	2194	2596	2829
34	1322	1670	2048	2426	2737
36	1234	1591	1917	2274	2631
38	1155	1493	1801	2139	2477
40	1084	1405	1696	2017	2338
42	1019	1325	1601	1907	2213
44	961	1253	1545	1807	2099
46	907	1187	1466	1715	1994
48	858	1126	1394	1631	1889
50	813	1070	1327	1584	1780
52	787	1019	1266	1513	1678
54	748	971	1209	1447	1601
56	713	927	1156	1386	1525
58	679	886	1107	1329	1439
60	648	847	1061	1275	1358
64	592	793	978	1179	1204
68	542	731	905	1061	1061
72	498	677	840	924	924
76	459	628	797	800	800
80	-	-	-	-	-
84	-	-	-	-	-
88	-	-	-	-	-

AL.SK190	95.6m Main Mast				
	32.1m Ballast to Mast Foot				
	Outreach (m)	2000t Ballast	2500t Ballast	3000t Ballast	3500t Ballast
12	-	-	-	-	-
14	-	-	-	-	-
16	-	-	-	-	-
18	2679	3360	3571	3571	3571
20	2379	3021	3426	3426	3426
22	2133	2717	3267	3291	3291
24	1928	2463	2998	3201	3201
26	1754	2248	2742	3084	3084
28	1605	2064	2523	2974	2974
30	1510	1905	2333	2761	2870
32	1397	1765	2167	2568	2773
34	1297	1642	2020	2398	2682
36	1209	1566	1890	2246	2596
38	1130	1468	1773	2111	2449
40	1058	1380	1668	1989	2310
42	994	1300	1601	1879	2184
44	935	1227	1519	1778	2070
46	882	1161	1440	1687	1966
48	833	1100	1368	1603	1870
50	800	1045	1302	1558	1782
52	762	993	1240	1487	1701
54	724	945	1183	1421	1626
56	688	901	1130	1360	1589
58	655	860	1081	1303	1524
60	624	821	1035	1249	1450
64	567	768	952	1153	1308
68	517	706	879	1068	1178
72	473	652	813	992	1057
76	434	603	772	924	944
80	398	559	719	835	835
84	366	519	672	747	747
88	337	483	629	637	637

AL.SK190	107.0m Main Mast				
	32.1m Ballast to Mast Foot				
	Outreach (m)	2000t Ballast	2500t Ballast	3000t Ballast	3500t Ballast
20	2354	2996	3360	3360	3360
22	2107	2691	3226	3226	3226
24	1902	2437	2973	3141	3141
26	1728	2222	2716	3025	3025
28	1601	2038	2497	2916	2916
30	1486	1878	2307	2735	2814
32	1373	1739	2140	2542	2718
34	1273	1615	1993	2371	2628
36	1185	1542	1863	2219	2543
38	1105	1444	1746	2084	2422
40	1034	1355	1640	1962	2283
42	969	1275	1581	1851	2157
44	911	1203	1495	1751	2043
46	857	1136	1416	1659	1938
48	808	1076	1343	1601	1843
50	781	1020	1277	1534	1755
52	739	968	1215	1462	1673
54	700	920	1158	1396	1601
56	664	876	1105	1335	1564
58	631	834	1056	1278	1499
60	600	800	1010	1224	1438
64	543	744	927	1127	1328
68	493	682	853	1042	1231
72	449	627	800	966	1125
76	409	578	747	898	1021
80	373	534	695	837	924
84	341	494	647	800	833
88	312	458	604	750	765
92	285	425	564	679	679
96	260	394	528	592	592
100	238	366	495	500	500
104	-	-	-	-	-
108	-	-	-	-	-
112	-	-	-	-	-
116	-	-	-	-	-
120	-	-	-	-	-
124	-	-	-	-	-
128	-	-	-	-	-

AL.SK190	118.5m Main Mast				
	32.1m Ballast to Mast Foot				
	Outreach (m)	2000t Ballast	2500t Ballast	3000t Ballast	3500t Ballast
20	-	-	-	-	-
22	2083	2667	3203	3203	3203
24	1877	2412	2948	3081	3081
26	1703	2197	2691	2967	2967
28	1593	2013	2471	2859	2859
30	1463	1853	2281	2709	2759
32	1350	1713	2114	2516	2664
34	1250	1601	1967	2345	2575
36	1161	1518	1836	2193	2490
38	1082	1420	1719	2057	2395
40	1010	1331	1614	1935	2256
42	946	1251	1557	1824	2130
44	887	1179	1471	1724	2016
46	833	1112	1392	1632	1911
48	800	1051	1319	1587	1815
50	758	995	1252	1509	1727
52	716	944	1191	1438	1646
54	677	896	1134	1372	1601
56	641	851	1081	1310	1539
58	608	810	1031	1253	1474
60	576	791	985	1199	1413
64	520	720	902	1103	1303
68	470	659	828	1017	1206
72	425	604	782	941	1120
76	385	554	723	873	1042
80	350	510	671	812	968
84	317	470	623	776	884
88	288	434	580	726	805
92	261	400	540	680	752
96	236	370	504	638	679
100	213	342	470	599	608
104	192	316	440	537	537
108	173	292	411	465	465
112	-	-	-	-	-
116	-	-	-	-	-
120	-	-	-	-	-
124	-	-	-	-	-
128	-	-	-	-	-

AL.SK190	129.9m Main Mast				
	32.1m Ballast to Mast Foot				
	Outreach (m)	2000t Ballast	2500t Ballast	3000t Ballast	3500t Ballast
20	-	-	-	-	-
22	-	-	-	-	-
24	1853	2388	2686	2686	2686
26	1678	2172	2581	2581	2581
28					

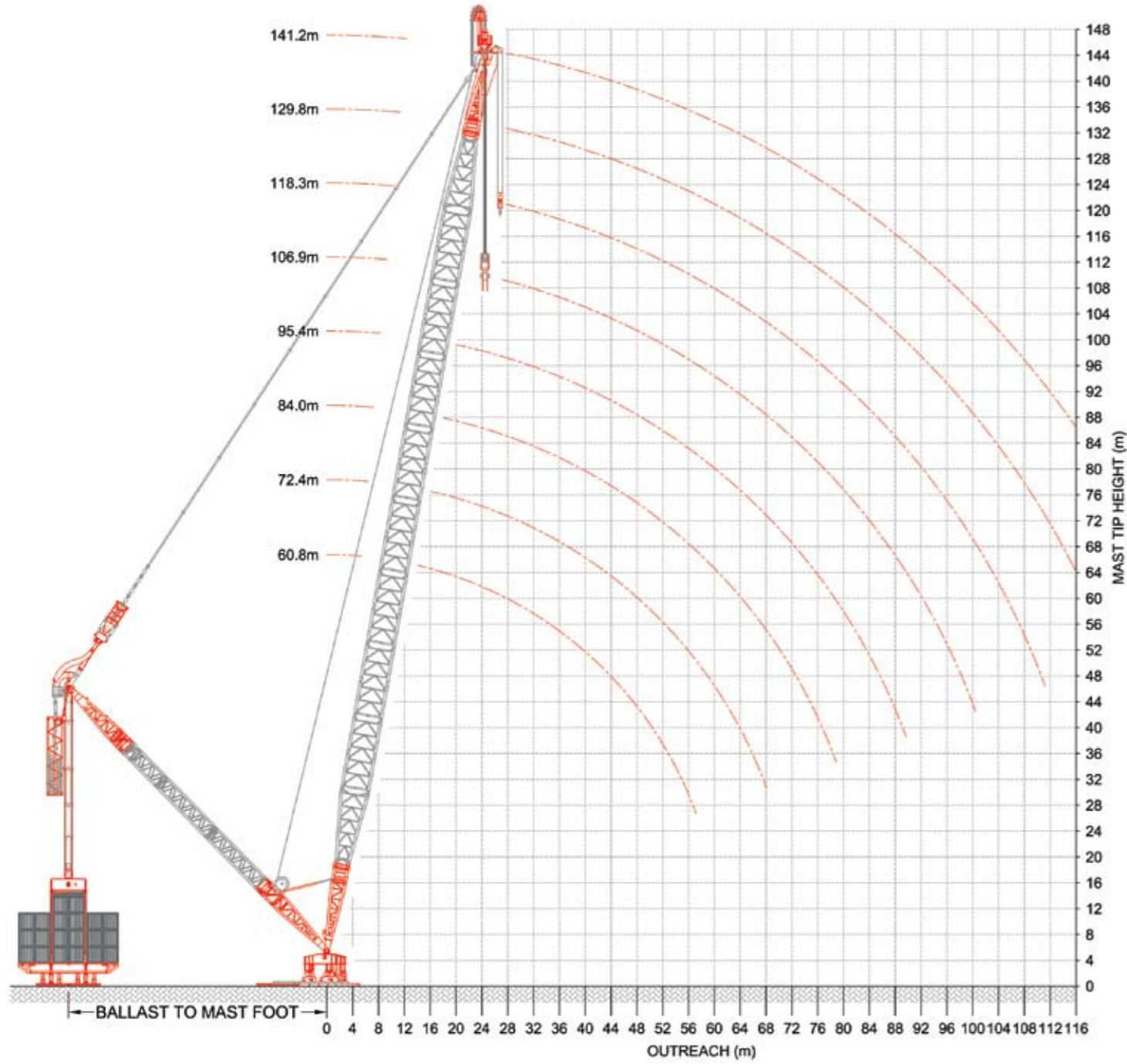
AL.SK190	Main Mast Using Quick Winch System							
	22.8m Ballast to Mast Foot							
	61.2m Main Mast	72.7m Main Mast	84.2m Main Mast	95.6m Main Mast	107.0m Main Mast	118.5m Main Mast	129.9m Main Mast	141.3m Main Mast
10	-	-	-	-	-	-	-	-
12	600	-	-	-	-	-	-	-
14	600	600	-	-	-	-	-	-
16	600	600	600	-	-	-	-	-
18	600	600	600	600	-	-	-	-
20	600	600	600	600	600	-	-	-
22	600	600	600	600	600	600	-	-
24	600	600	600	600	600	600	600	-
26	600	600	600	600	600	600	600	600
28	600	600	600	600	600	600	600	600
30	600	600	600	600	600	600	600	600
32	600	600	600	600	600	600	600	600
34	600	600	600	600	600	600	600	600
36	600	600	600	600	600	600	600	600
38	600	600	600	600	600	600	600	600
40	600	600	600	600	600	600	600	600
42	600	600	600	600	600	600	600	600
44	600	600	600	600	600	600	600	600
46	600	600	600	600	600	600	600	600
48	600	600	600	600	600	600	600	600
50	600	600	600	600	600	600	600	600
52	600	600	600	600	600	600	600	600
54	600	600	600	600	600	600	600	600
56	600	600	600	600	600	600	600	600
58	-	600	600	600	600	600	600	600
60	-	600	600	600	600	600	600	600
64	-	600	600	600	600	600	600	600
68	-	547	600	600	600	600	600	600
72	-	-	600	600	600	600	600	600
76	-	-	500	600	600	600	600	600
80	-	-	-	524	600	585	565	551
84	-	-	-	444	525	544	524	510
88	-	-	-	366	452	506	486	472
92	-	-	-	-	384	447	451	437
96	-	-	-	-	319	384	420	406
100	-	-	-	-	254	325	369	376
104	-	-	-	-	-	269	314	329
108	-	-	-	-	-	215	263	277
112	-	-	-	-	-	-	214	227
116	-	-	-	-	-	-	167	178
120	-	-	-	-	-	-	121	132
124	-	-	-	-	-	-	-	87
128	-	-	-	-	-	-	-	-

All lift capacities are 75% chart capacity in metric tonnes (t)
AL.SK190 with 4000t Ballast

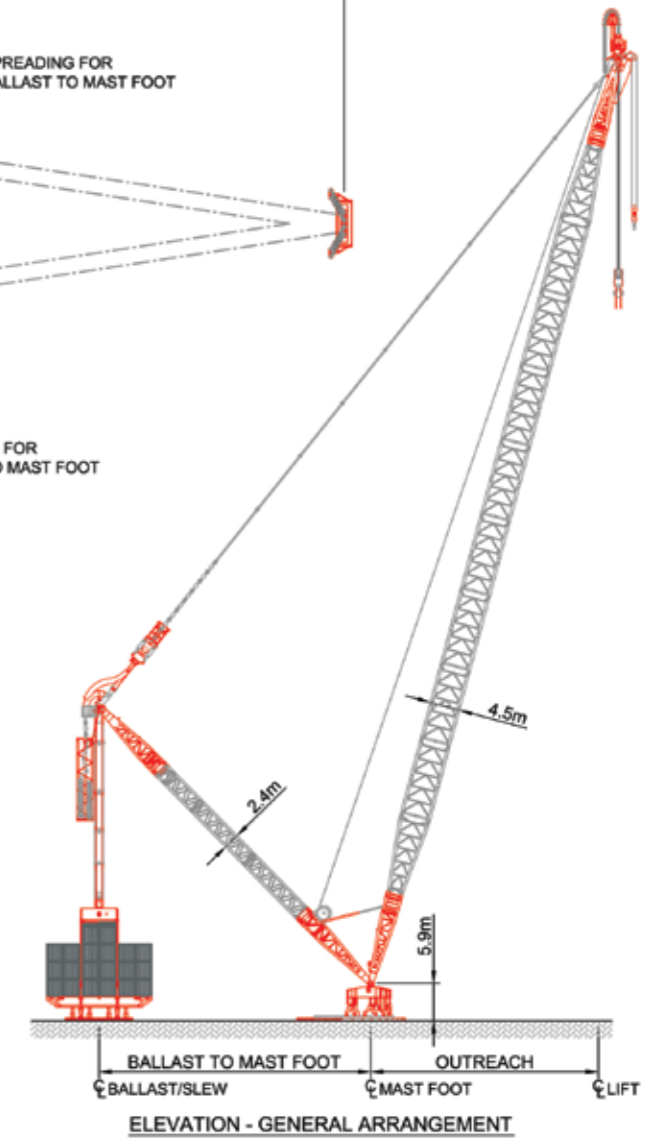
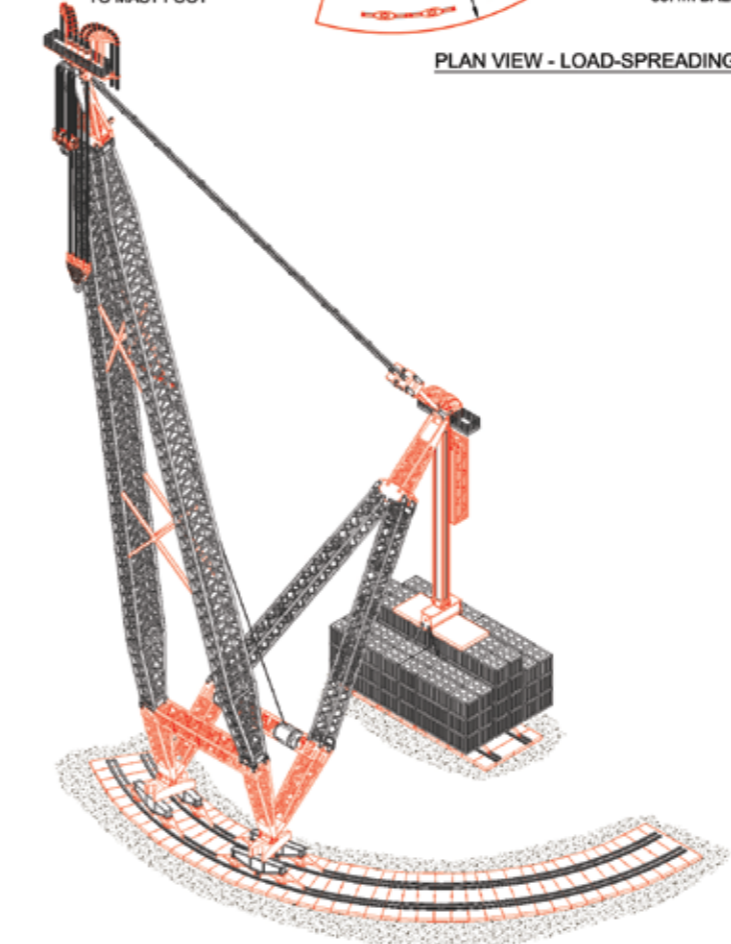
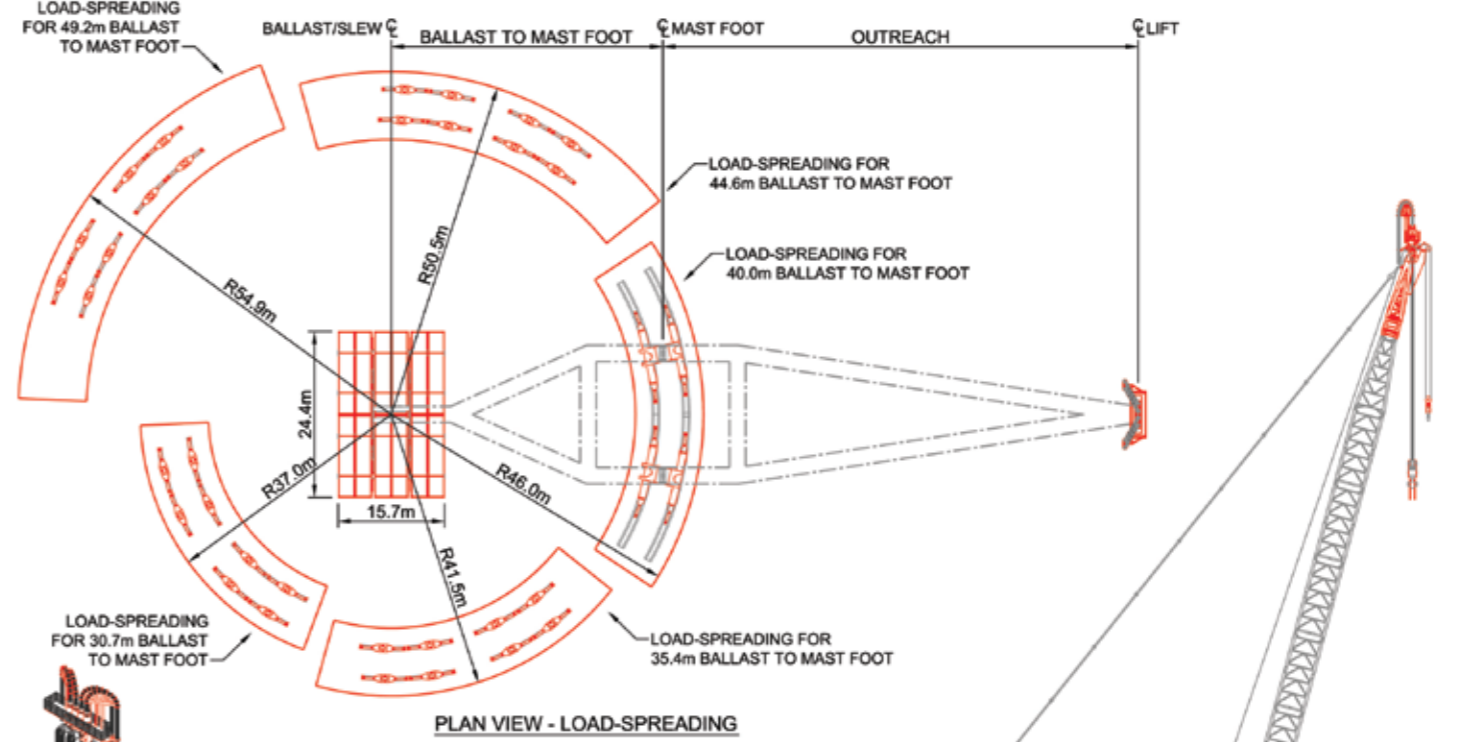
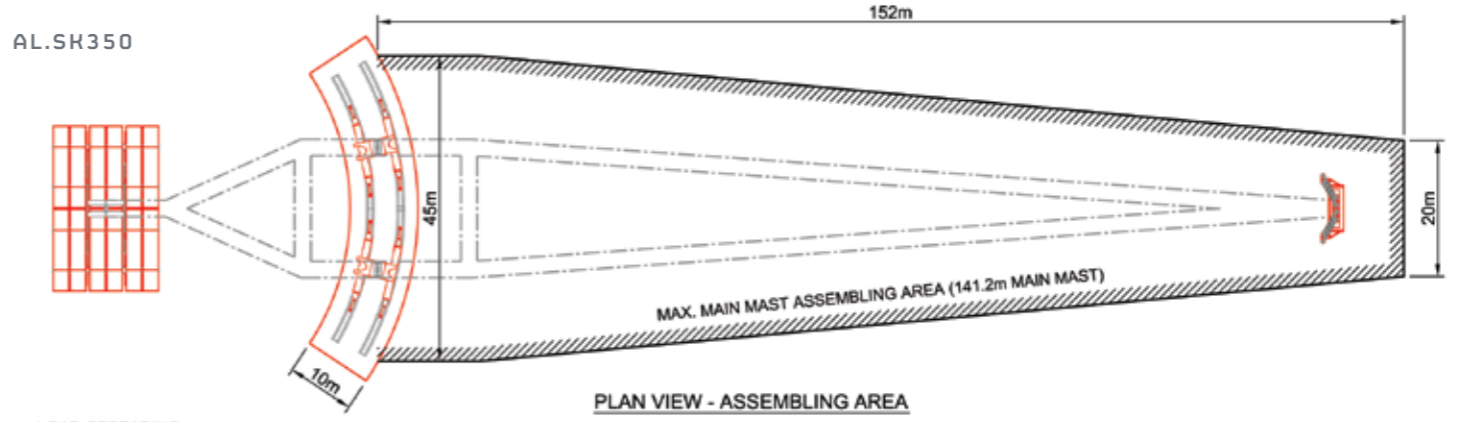
AL.SK190	Main Mast Using Quick Winch System							
	32.1m Ballast to Mast Foot							
	61.2m Main Mast	72.7m Main Mast	84.2m Main Mast	95.6m Main Mast	107.0m Main Mast	118.5m Main Mast	129.9m Main Mast	141.3m Main Mast
10	-	-	-	-	-	-	-	-
12	600	-	-	-	-	-	-	-
14	600	600	-	-	-	-	-	-
16	600	600	600	-	-	-	-	-
18	600	600	600	600	-	-	-	-
20	600	600	600	600	600	-	-	-
22	600	600	600	600	600	600	-	-
24	600	600	600	600	600	600	600	-
26	600	600	600	600	600	600	600	600
28	600	600	600	600	600	600	600	600
30	600	600	600	600	600	600	600	600
32	600	600	600	600	600	600	600	600
34	600	600	600	600	600	600	600	600
36	600	600	600	600	600	600	600	600
38	600	600	600	600	600	600	600	600
40	600	600	600	600	600	600	600	600
42	600	600	600	600	600	600	600	600
44	600	600	600	600	600	600	600	600
46	600	600	600	600	600	600	600	600
48	600	600	600	600	600	600	600	600
50	600	600	600	600	600	600	600	600
52	600	600	600	600	600	600	600	600
54	600	600	600	600	600	600	600	600
56	600	600	600	600	600	600	600	600
58	-	600	600	600	600	600	600	600
60	-	600	600	600	600	600	600	600
64	-	600	600	600	600	600	600	600
68	-	600	600	600	600	600	600	600
72	-	-	600	600	600	600	600	600
76	-	-	600	600	600	600	600	600
80	-	-	-	600	600	600	600	600
84	-	-	-	-	600	600	600	600
88	-	-	-	-	565	600	600	600
92	-	-	-	-	-	600	600	600
96	-	-	-	-	-	520	600	539
100	-	-	-	-	-	430	534	470
104	-	-	-	-	-	-	465	404
108	-	-	-	-	-	-	393	341
112	-	-	-	-	-	-	-	401
116	-	-	-	-	-	-	-	342
120	-	-	-	-	-	-	-	281
124	-	-	-	-	-	-	-	114
128	-	-	-	-	-	-	-	62

All lift capacities are 75% chart capacity in metric tonnes (t)
AL.SK190 with 4000t Ballast

AL.SK350



AL.SK350



360° SLEWING CAPACITY

AL.SK350	60.8m Main Mast				
	30.7m Ballast to Mast Foot				
	Outreach (m)	2000t Ballast	2500t Ballast	3000t Ballast	3500t Ballast
12	4051	5000	5000	5000	5000
14	3435	4312	5000	5000	5000
16	2997	3740	4508	5000	5000
18	2637	3296	3978	4660	4919
20	2350	2964	3554	4168	4782
22	2115	2673	3207	3765	4324
24	1919	2430	2942	3430	3924
26	1753	2225	2698	3170	3618
28	1610	2049	2488	2927	3341
30	1511	1897	2306	2716	3125
32	1404	1763	2147	2531	2915
34	1308	1646	2007	2368	2729
36	1224	1565	1882	2223	2564
38	1148	1471	1771	2094	2417
40	1080	1387	1670	1977	2234
42	1019	1311	1601	1872	2068
44	963	1242	1521	1776	1916
46	912	1179	1446	1688	1775
48	865	1121	1377	1608	1643
50	822	1067	1313	1546	1546
52	-	-	-	-	-
54	-	-	-	-	-
56	-	-	-	-	-
58	-	-	-	-	-
60	-	-	-	-	-
64	-	-	-	-	-
68	-	-	-	-	-
72	-	-	-	-	-
76	-	-	-	-	-
80	-	-	-	-	-
84	-	-	-	-	-
88	-	-	-	-	-
92	-	-	-	-	-
96	-	-	-	-	-
100	-	-	-	-	-
104	-	-	-	-	-
108	-	-	-	-	-

AL.SK350	72.4m Main Mast				
	30.7m Ballast to Mast Foot				
	Outreach (m)	2000t Ballast	2500t Ballast	3000t Ballast	3500t Ballast
12	-	-	-	-	-
14	3400	4277	4868	4868	4868
16	2965	3705	4473	4770	4770
18	2605	3260	3943	4625	4676
20	2318	2932	3519	4133	4587
22	2082	2641	3199	3730	4288
24	1886	2398	2910	3394	3906
26	1720	2193	2665	3138	3583
28	1601	2017	2455	2894	3306
30	1482	1864	2274	2683	3093
32	1374	1731	2115	2499	2882
34	1279	1613	1974	2336	2697
36	1194	1536	1850	2191	2532
38	1119	1442	1738	2061	2384
40	1051	1358	1638	1945	2252
42	989	1281	1574	1839	2132
44	933	1212	1491	1743	2022
46	882	1149	1416	1656	1923
48	835	1091	1347	1601	1831
50	792	1037	1283	1529	1747
52	752	988	1224	1461	1670
54	715	943	1170	1398	1601
56	681	900	1120	1339	1498
58	-	-	-	-	-
60	-	-	-	-	-
64	-	-	-	-	-
68	-	-	-	-	-
72	-	-	-	-	-
76	-	-	-	-	-
80	-	-	-	-	-
84	-	-	-	-	-
88	-	-	-	-	-
92	-	-	-	-	-
96	-	-	-	-	-
100	-	-	-	-	-
104	-	-	-	-	-
108	-	-	-	-	-

AL.SK350	84.0m Main Mast				
	30.7m Ballast to Mast Foot				
	Outreach (m)	2000t Ballast	2500t Ballast	3000t Ballast	3500t Ballast
12	-	-	-	-	-
14	-	-	-	-	-
16	2936	3674	4442	4583	4583
18	2577	3229	3911	4476	4476
20	2289	2903	3487	4101	4332
22	2053	2612	3170	3698	4194
24	1857	2369	2881	3362	3874
26	1691	2163	2636	3108	3551
28	1579	1987	2426	2865	3273
30	1455	1835	2244	2653	3063
32	1347	1701	2085	2469	2853
34	1252	1601	1944	2306	2667
36	1167	1508	1820	2161	2502
38	1091	1415	1708	2031	2354
40	1023	1330	1607	1914	2222
42	962	1254	1546	1809	2101
44	905	1185	1464	1713	1992
46	854	1121	1388	1625	1892
48	807	1063	1319	1575	1801
50	764	1010	1255	1501	1717
52	724	960	1197	1433	1639
54	687	915	1142	1370	1597
56	653	872	1092	1311	1530
58	621	833	1045	1256	1468
60	591	796	1001	1206	1410
64	537	729	921	1113	1305
68	-	-	-	-	-
72	-	-	-	-	-
76	-	-	-	-	-
80	-	-	-	-	-
84	-	-	-	-	-
88	-	-	-	-	-
92	-	-	-	-	-
96	-	-	-	-	-
100	-	-	-	-	-
104	-	-	-	-	-
108	-	-	-	-	-

AL.SK350	95.4m Main Mast				
	30.7m Ballast to Mast Foot				
	Outreach (m)	2000t Ballast	2500t Ballast	3000t Ballast	3500t Ballast
12	-	-	-	-	-
14	-	-	-	-	-
16	-	-	-	-	-
18	2551	3203	3882	4322	4322
20	2262	2876	3458	4072	4180
22	2026	2585	3143	3668	4044
24	1830	2342	2853	3332	3844
26	1663	2136	2608	3081	3520
28	1554	1959	2398	2837	3243
30	1430	1807	2216	2626	3035
32	1322	1673	2057	2441	2824
34	1227	1588	1916	2277	2639
36	1142	1483	1791	2132	2474
38	1066	1389	1679	2003	2326
40	998	1305	1601	1886	2193
42	936	1228	1521	1780	2073
44	879	1159	1438	1684	1963
46	828	1095	1362	1601	1863
48	781	1037	1293	1549	1772
50	738	983	1229	1475	1687
52	698	934	1170	1407	1610
54	661	888	1116	1343	1571
56	627	846	1065	1285	1504
58	595	806	1018	1230	1442
60	565	769	974	1179	1384
64	511	703	894	1086	1278
68	463	644	824	1005	1185
72	420	591	762	932	1103
76	383	544	706	867	1029
80	-	-	-	-	-
84	-	-	-	-	-
88	-	-	-	-	-
92	-	-	-	-	-
96	-	-	-	-	-
100	-	-	-	-	-
104	-	-	-	-	-
108	-	-	-	-	-

AL.SK350	106.9m Main Mast				
	30.7m Ballast to Mast Foot				
	Outreach (m)	2000t Ballast	2500t Ballast	3000t Ballast	3500t Ballast
20	2237	2851	3429	4015	4015
22	2001	2559	3117	3640	3881
24	1804	2315	2827	3303	3753
26	1637	2109	2582	3054	3491
28	1530	1933	2372	2810	3213
30	1406	1780	2189	2599	3008
32	1298	1646	2030	2414	2797
34	1202	1564	1889	2250	2611
36	1117	1458	1764	2105	2446
38	1041	1364	1652	1975	2298
40	973	1280	1587	1858	2165
42	911	1203	1496	1752	2045
44	855	1134	1413	1656	1935
46	803	1070	1337	1601	1835
48	756	1012	1268	1524	1744
50	713	958	1204	1450	1659
52	673	909	1145	1381	1601
54	635	863	1090	1318	1545
56	601	820	1040	1259	1478
58	569	781	993	1204	1416
60	539	744	948	1153	1358
64	485	677	869	1061	1252
68	437	618	798	979	1159
72	394	565	736	906	1077
76	356	518	680	841	1003
80	322	476	629	783	936
84	291	437	584	730	876
88	263	403	542	682	821
92	-	-	-	-	-
96	-	-	-	-	-
100	-	-	-	-	-
104	-	-	-	-	-
108	-	-	-	-	-

AL.SK350	118.3m Main Mast				
	30.7m Ballast to Mast Foot				
	Outreach (m)	2000t Ballast	2500t Ballast	3000t Ballast	3500t Ballast
20	-	-	-	-	-
22	1987	2545	3104	3274	3274
24	1789	2301	2812	3200	3200
26	1621	2094	2566	3039	3090
28	1516	1916	2355	2794	2986
30	1392	1763	2172	2581	2887
32	1283	1628	2012	2396	2780
34	1187	1548	1871	2232	2593
36	1101	1443	1745	2086	2427
38	1025	1348	1633	1956	2279
40	956	1263	1570	1838	2146
42	894	1186	1479	1732	2025
44	837	1116	1395	1636	1915
46	785	1052	1319	1586	1815
48	738	994	1250	1506	1723
50	694	940	1186	1431	1638
52	654	890	1127	1363	1599
54	617	844	1072	1299	1527
56	582	802	1021	1240	1460
58	550	762	974	1185	1397
60	520	725	929	1134	1339
64	465	657	849	1041	1233
68	417	598	779	959	1140
72	375	545	716	886	1057
76	336	498	659	821	963
80	302	455	609	762	916
84	271	417	563	709	856
88	242	382	522	661	801
92	217	350	484	617	751
96	193	321	449	577	705
100	171	294	417	540	662
104	-	-	-	-	-
108	-	-	-	-	-

AL.SK350	129.8m Main Mast				
	30.7m Ballast to Mast Foot				
	Outreach (m)	2000t Ballast	2500t Ballast	3000t Ballast	3500t Ballast
20	-	-	-	-	-
22	-	-	-	-	-
24	1754	2266	2777	3000	3000
2					

AL.SK350	60.8m Main Mast				
	40.0m Ballast to Mast Foot				
	Outreach (m)	2000t Ballast	2500t Ballast	3000t Ballast	3500t Ballast
12	5000	5000	5000	5000	5000
14	4602	5000	5000	5000	5000
16	3995	4995	5000	5000	5000
18	3523	4412	5000	5000	5000
20	3170	3946	4746	4940	4940
22	2861	3564	4291	4856	4856
24	2604	3246	3913	4579	4773
26	2386	3001	3592	4208	4505
28	2199	2770	3318	3889	4103
30	2037	2571	3104	3613	3752
32	1896	2396	2896	3371	3442
34	1771	2241	2712	3182	3194
36	1660	2104	2548	2946	2946
38	1584	1981	2402	2722	2722
40	1495	1871	2271	2516	2516
42	1414	1771	2152	2327	2327
44	1341	1680	2044	2151	2151
46	1273	1601	1945	1987	1987
48	1212	1545	1831	1831	1831
50	1155	1475	1682	1682	1682
52	-	-	-	-	-
54	-	-	-	-	-
56	-	-	-	-	-
58	-	-	-	-	-
60	-	-	-	-	-
64	-	-	-	-	-
68	-	-	-	-	-
72	-	-	-	-	-
76	-	-	-	-	-
80	-	-	-	-	-
84	-	-	-	-	-
88	-	-	-	-	-
92	-	-	-	-	-
96	-	-	-	-	-
100	-	-	-	-	-
104	-	-	-	-	-
108	-	-	-	-	-

AL.SK350	72.4m Main Mast				
	40.0m Ballast to Mast Foot				
	Outreach (m)	2000t Ballast	2500t Ballast	3000t Ballast	3500t Ballast
12	-	-	-	-	-
14	4562	5000	5000	5000	5000
16	3956	4914	4914	4914	4914
18	3484	4373	4824	4824	4824
20	3134	3907	4707	4737	4737
22	2825	3526	4253	4652	4652
24	2568	3208	3874	4541	4569
26	2350	2966	3554	4169	4488
28	2164	2735	3280	3851	4409
30	2002	2535	3069	3575	4108
32	1861	2361	2861	3333	3821
34	1736	2206	2677	3148	3536
36	1625	2069	2514	2958	3280
38	1553	1947	2368	2789	3081
40	1463	1836	2236	2636	2871
42	1382	1736	2117	2498	2680
44	1309	1645	2009	2373	2504
46	1242	1590	1910	2258	2342
48	1180	1514	1820	2153	2190
50	1124	1444	1737	2049	2049
52	1071	1379	1660	1916	1916
54	1023	1319	1601	1790	1790
56	978	1264	1550	1670	1670
58	-	-	-	-	-
60	-	-	-	-	-
64	-	-	-	-	-
68	-	-	-	-	-
72	-	-	-	-	-
76	-	-	-	-	-
80	-	-	-	-	-
84	-	-	-	-	-
88	-	-	-	-	-
92	-	-	-	-	-
96	-	-	-	-	-
100	-	-	-	-	-
104	-	-	-	-	-
108	-	-	-	-	-

AL.SK350	84.0m Main Mast				
	40.0m Ballast to Mast Foot				
	Outreach (m)	2000t Ballast	2500t Ballast	3000t Ballast	3500t Ballast
12	-	-	-	-	-
14	-	-	-	-	-
16	3922	4756	4756	4756	4756
18	3450	4339	4648	4648	4648
20	3103	3873	4505	4505	4505
22	2794	3491	4218	4368	4368
24	2537	3203	3840	4235	4235
26	2319	2934	3520	4107	4107
28	2132	2704	3245	3816	3983
30	1970	2504	3037	3540	3862
32	1829	2329	2829	3299	3745
34	1704	2175	2645	3116	3556
36	1601	2037	2482	2926	3341
38	1524	1915	2336	2757	3178
40	1434	1804	2204	2604	3004
42	1353	1704	2085	2466	2847
44	1280	1613	1977	2341	2704
46	1213	1560	1878	2226	2563
48	1151	1484	1788	2121	2414
50	1094	1414	1704	2024	2275
52	1042	1350	1628	1935	2145
54	994	1290	1586	1853	2023
56	949	1235	1520	1776	1909
58	907	1183	1459	1705	1800
60	868	1135	1401	1638	1697
64	797	1047	1297	1539	1539
68	-	-	-	-	-
72	-	-	-	-	-
76	-	-	-	-	-
80	-	-	-	-	-
84	-	-	-	-	-
88	-	-	-	-	-
92	-	-	-	-	-
96	-	-	-	-	-
100	-	-	-	-	-
104	-	-	-	-	-
108	-	-	-	-	-

AL.SK350	95.4m Main Mast				
	40.0m Ballast to Mast Foot				
	Outreach (m)	2000t Ballast	2500t Ballast	3000t Ballast	3500t Ballast
12	-	-	-	-	-
14	-	-	-	-	-
16	-	-	-	-	-
18	3419	4308	4517	4517	4517
20	3075	3842	4376	4376	4376
22	2765	3460	4187	4241	4241
24	2508	3175	3808	4111	4111
26	2290	2905	3488	3986	3986
28	2103	2674	3213	3784	3865
30	1941	2474	3008	3508	3794
32	1799	2299	2799	3266	3637
34	1674	2145	2616	3086	3524
36	1596	2008	2452	2897	3308
38	1497	1885	2306	2727	3148
40	1407	1774	2174	2574	2974
42	1326	1674	2055	2436	2817
44	1253	1601	1947	2311	2674
46	1185	1533	1848	2196	2544
48	1124	1457	1757	2091	2424
50	1067	1387	1674	1994	2314
52	1015	1322	1601	1905	2213
54	966	1263	1559	1822	2118
56	921	1207	1493	1745	2031
58	879	1155	1431	1674	1948
60	840	1107	1374	1607	1849
64	769	1019	1269	1519	1666
68	707	942	1177	1413	1537
72	651	874	1096	1318	1384
76	602	812	1023	1233	1240
80	-	-	-	-	-
84	-	-	-	-	-
88	-	-	-	-	-
92	-	-	-	-	-
96	-	-	-	-	-
100	-	-	-	-	-
104	-	-	-	-	-
108	-	-	-	-	-

AL.SK350	106.9m Main Mast				
	40.0m Ballast to Mast Foot				
	Outreach (m)	2000t Ballast	2500t Ballast	3000t Ballast	3500t Ballast
20	3048	3813	4225	4225	4225
22	2739	3430	4093	4093	4093
24	2481	3148	3778	3966	3966
26	2263	2878	3458	3844	3844
28	2076	2647	3203	3728	3728
30	1913	2447	2980	3478	3615
32	1772	2272	2772	3236	3507
34	1646	2117	2588	3058	3403
36	1571	1979	2424	2868	3277
38	1471	1856	2278	2699	3120
40	1382	1746	2146	2546	2946
42	1301	1646	2027	2408	2788
44	1227	1590	1918	2282	2645
46	1159	1507	1819	2167	2515
48	1098	1431	1729	2062	2395
50	1041	1361	1645	1965	2285
52	989	1296	1601	1876	2183
54	940	1236	1533	1793	2089
56	895	1181	1466	1716	2002
58	853	1129	1405	1645	1920
60	814	1080	1347	1601	1845
64	743	993	1243	1493	1707
68	680	915	1151	1386	1601
72	624	847	1069	1291	1497
76	575	785	996	1206	1363
80	530	730	930	1130	1239
84	489	680	870	1061	1122
88	452	634	816	998	1010
92	-	-	-	-	-
96	-	-	-	-	-
100	-	-	-	-	-
104	-	-	-	-	-
108	-	-	-	-	-

AL.SK350	118.3m Main Mast				
	40.0m Ballast to Mast Foot				
	Outreach (m)	2000t Ballast	2500t Ballast	3000t Ballast	3500t Ballast
20	-	-	-	-	-
22	2729	3417	3473	3473	3473
24	2469	3136	3358	3358	3358
26	2250	2865	3248	3248	3248
28	2062	2633	3184	3184	3184
30	1899	2432	2965	3083	3083
32	1756	2256	2756	2986	2986
34	1630	2101	2571	2892	2892
36	1557	1963	2407	2802	2802
38	1457	1839	2260	2681	2714
40	1367	1728	2128	2528	2630
42	1285	1627	2008	2389	2548
44	1211	1575	1899	2263	2469
46	1143	1491	1800	2148	2393
48	1081	1415	1709	2042	2318
50	1024	1344	1625	1945	2246
52	971	1279	1587	1856	2163
54	923	1219	1515	1773	2069
56	877	1163	1449	1696	1981
58	835	1111	1387	1624	1900
60	796	1062	1329	1596	1824
64	724	974	1224	1474	1686
68	661	897	1132	1367	1601
72	605	828	1050	1272	1494
76	555	766	976	1187	1397
80	510	710	910	1110	1310
84	469	660	850	1041	1208
88	432	614	796	978	1105
92	399	572	746	920	1008
96	368	534	701	868	915
100	339	499	659	819	824
104	-	-	-	-	-
108	-	-	-	-	-

AL.SK350	129.8m Main Mast				
	40.0m Ballast to Mast Foot				
	Outreach (m)	2000t Ballast	2500t Ballast	3000t Ballast	3500t Ballast
20	-	-	-	-	-

AL.SK350	60.8m Main Mast				
	49.2m Ballast to Mast Foot				
	Outreach (m)	2000t Ballast	2500t Ballast	3000t Ballast	3500t Ballast
12	5000	5000	5000	5000	5000
14	5000	5000	5000	5000	5000
16	5000	5000	5000	5000	5000
18	4445	5000	5000	5000	5000
20	3976	4959	5000	5000	5000
22	3592	4487	4931	4931	4931
24	3273	4092	4846	4846	4846
26	3026	3759	4516	4598	4598
28	2795	3473	4176	4182	4182
30	2594	3225	3818	3818	3818
32	2418	3033	3497	3497	3497
34	2263	2841	3211	3211	3211
36	2125	2671	2981	2981	2981
38	2001	2519	2748	2748	2748
40	1890	2382	2535	2535	2535
42	1790	2258	2338	2338	2338
44	1699	2146	2156	2156	2156
46	1615	1985	1985	1985	1985
48	1563	1823	1823	1823	1823
50	1493	1667	1667	1667	1667
52	-	-	-	-	-
54	-	-	-	-	-
56	-	-	-	-	-
58	-	-	-	-	-
60	-	-	-	-	-
64	-	-	-	-	-
68	-	-	-	-	-
72	-	-	-	-	-
76	-	-	-	-	-
80	-	-	-	-	-
84	-	-	-	-	-
88	-	-	-	-	-
92	-	-	-	-	-
96	-	-	-	-	-
100	-	-	-	-	-
104	-	-	-	-	-
108	-	-	-	-	-

AL.SK350	72.4m Main Mast				
	49.2m Ballast to Mast Foot				
	Outreach (m)	2000t Ballast	2500t Ballast	3000t Ballast	3500t Ballast
12	-	-	-	-	-
14	5000	5000	5000	5000	5000
16	4986	5000	5000	5000	5000
18	4401	4931	4931	4931	4931
20	3933	4846	4846	4846	4846
22	3550	4444	4762	4762	4762
24	3231	4051	4680	4680	4680
26	2988	3717	4474	4598	4598
28	2756	3432	4135	4518	4518
30	2556	3203	3840	4305	4305
32	2380	2995	3583	3963	3963
34	2225	2804	3355	3660	3660
36	2088	2634	3181	3389	3389
38	1964	2482	3000	3176	3176
40	1854	2345	2837	2954	2954
42	1753	2222	2690	2752	2752
44	1662	2109	2556	2565	2565
46	1601	2006	2393	2393	2393
48	1530	1912	2233	2233	2233
50	1459	1826	2084	2084	2084
52	1395	1746	1943	1943	1943
54	1335	1672	1810	1810	1810
56	1279	1603	1684	1684	1684
58	-	-	-	-	-
60	-	-	-	-	-
64	-	-	-	-	-
68	-	-	-	-	-
72	-	-	-	-	-
76	-	-	-	-	-
80	-	-	-	-	-
84	-	-	-	-	-
88	-	-	-	-	-
92	-	-	-	-	-
96	-	-	-	-	-
100	-	-	-	-	-
104	-	-	-	-	-
108	-	-	-	-	-

AL.SK350	84.0m Main Mast				
	49.2m Ballast to Mast Foot				
	Outreach (m)	2000t Ballast	2500t Ballast	3000t Ballast	3500t Ballast
12	-	-	-	-	-
14	-	-	-	-	-
16	4879	4879	4879	4879	4879
18	4363	4771	4771	4771	4771
20	3895	4631	4631	4631	4631
22	3513	4407	4495	4495	4495
24	3203	4013	4363	4363	4363
26	2954	3680	4234	4234	4234
28	2722	3395	4098	4109	4109
30	2522	3178	3803	3986	3986
32	2346	2961	3546	3867	3867
34	2192	2770	3319	3750	3750
36	2054	2600	3147	3635	3635
38	1931	2448	2966	3439	3439
40	1820	2312	2804	3212	3212
42	1720	2188	2656	3039	3039
44	1628	2075	2523	2849	2849
46	1575	1973	2400	2675	2675
48	1499	1879	2289	2513	2513
50	1429	1792	2186	2363	2363
52	1364	1712	2090	2223	2223
54	1304	1638	2002	2092	2092
56	1248	1599	1921	1969	1969
58	1196	1535	1845	1852	1852
60	1148	1476	1742	1742	1742
64	1060	1368	1569	1569	1569
68	-	-	-	-	-
72	-	-	-	-	-
76	-	-	-	-	-
80	-	-	-	-	-
84	-	-	-	-	-
88	-	-	-	-	-
92	-	-	-	-	-
96	-	-	-	-	-
100	-	-	-	-	-
104	-	-	-	-	-
108	-	-	-	-	-

AL.SK350	95.4m Main Mast				
	49.2m Ballast to Mast Foot				
	Outreach (m)	2000t Ballast	2500t Ballast	3000t Ballast	3500t Ballast
12	-	-	-	-	-
14	-	-	-	-	-
16	-	-	-	-	-
18	4330	4654	4654	4654	4654
20	3862	4517	4517	4517	4517
22	3479	4373	4384	4384	4384
24	3193	3980	4256	4256	4256
26	2923	3646	4131	4131	4131
28	2691	3361	4010	4010	4010
30	2491	3146	3769	3893	3893
32	2315	2930	3512	3778	3778
34	2160	2739	3285	3667	3667
36	2023	2569	3116	3559	3559
38	1899	2417	2935	3420	3453
40	1788	2280	2772	3231	3350
42	1688	2157	2625	3093	3203
44	1601	2044	2491	2938	3041
46	1547	1941	2369	2797	2865
48	1470	1847	2257	2667	2703
50	1400	1760	2154	2547	2553
52	1335	1680	2059	2413	2413
54	1275	1606	1971	2283	2283
56	1219	1571	1889	2161	2161
58	1167	1507	1813	2046	2046
60	1119	1447	1742	1937	1937
64	1031	1339	1613	1738	1738
68	954	1243	1532	1594	1594
72	885	1158	1427	1427	1427
76	823	1082	1270	1270	1270
80	-	-	-	-	-
84	-	-	-	-	-
88	-	-	-	-	-
92	-	-	-	-	-
96	-	-	-	-	-
100	-	-	-	-	-
104	-	-	-	-	-
108	-	-	-	-	-

AL.SK350	106.9m Main Mast				
	49.2m Ballast to Mast Foot				
	Outreach (m)	2000t Ballast	2500t Ballast	3000t Ballast	3500t Ballast
20	3831	4377	4377	4377	4377
22	3448	4247	4247	4247	4247
24	3165	3948	4123	4123	4123
26	2894	3615	4002	4002	4002
28	2663	3329	3885	3885	3885
30	2462	3118	3737	3773	3773
32	2286	2901	3480	3663	3663
34	2131	2710	3252	3557	3557
36	1993	2540	3086	3454	3454
38	1870	2388	2905	3353	3353
40	1759	2251	2742	3203	3256
42	1658	2127	2595	3064	3200
44	1601	2014	2461	2908	3107
46	1520	1911	2339	2767	2987
48	1443	1817	2227	2637	2826
50	1373	1730	2124	2517	2677
52	1308	1650	2029	2407	2538
54	1248	1601	1941	2305	2409
56	1192	1543	1859	2210	2288
58	1140	1479	1783	2122	2174
60	1092	1419	1711	2039	2068
64	1004	1311	1601	1872	1872
68	926	1215	1505	1695	1695
72	857	1130	1404	1576	1576
76	795	1054	1313	1428	1428
80	740	986	1232	1291	1291
84	690	924	1158	1162	1162
88	644	868	1039	1039	1039
92	-	-	-	-	-
96	-	-	-	-	-
100	-	-	-	-	-
104	-	-	-	-	-
108	-	-	-	-	-

AL.SK350	118.3m Main Mast				
	49.2m Ballast to Mast Foot				
	Outreach (m)	2000t Ballast	2500t Ballast	3000t Ballast	3500t Ballast
20	-	-	-	-	-
22	3438	3618	3618	3618	3618
24	3156	3505	3505	3505	3505
26	2884	3396	3396	3396	3396
28	2651	3291	3291	3291	3291
30	2449	3105	3203	3203	3203
32	2272	2887	3133	3133	3133
34	2117	2695	3038	3038	3038
36	1978	2524	2946	2946	2946
38	1854	2372	2857	2857	2857
40	1742	2234	2726	2770	2770
42	1641	2110	2578	2686	2686
44	1588	1997	2444	2604	2604
46	1505	1894	2321	2524	2524
48	1428	1799	2209	2446	2446
50	1357	1712	2105	2371	2371
52	1292	1631	2010	2297	2297
54	1231	1596	1921	2224	2224
56	1175	1527	1839	2154	2154
58	1123	1462	1763	2085	2085
60	1074	1402	1691	2017	2017
64	986	1293	1601	1869	1869
68	908	1197	1487	1737	1761
72	839	1112	1385	1620	1629
76	777	1036	1294	1531	1531
80	721	967	1213	1400	1400
84	670	905	1139	1278	1278
88	625	848	1072	1164	1164
92	583	796	1010	1056	1056
96	544	749	952	952	952
100	509	706	852	852	852
104	-	-	-	-	-
108	-	-	-	-	-

AL.SK350	129.8m Main Mast				
	49.2m Ballast to Mast Foot				
	Outreach (m)	2000t Ballast	2500t Ballast	3000t Ballast	3500t Ballast

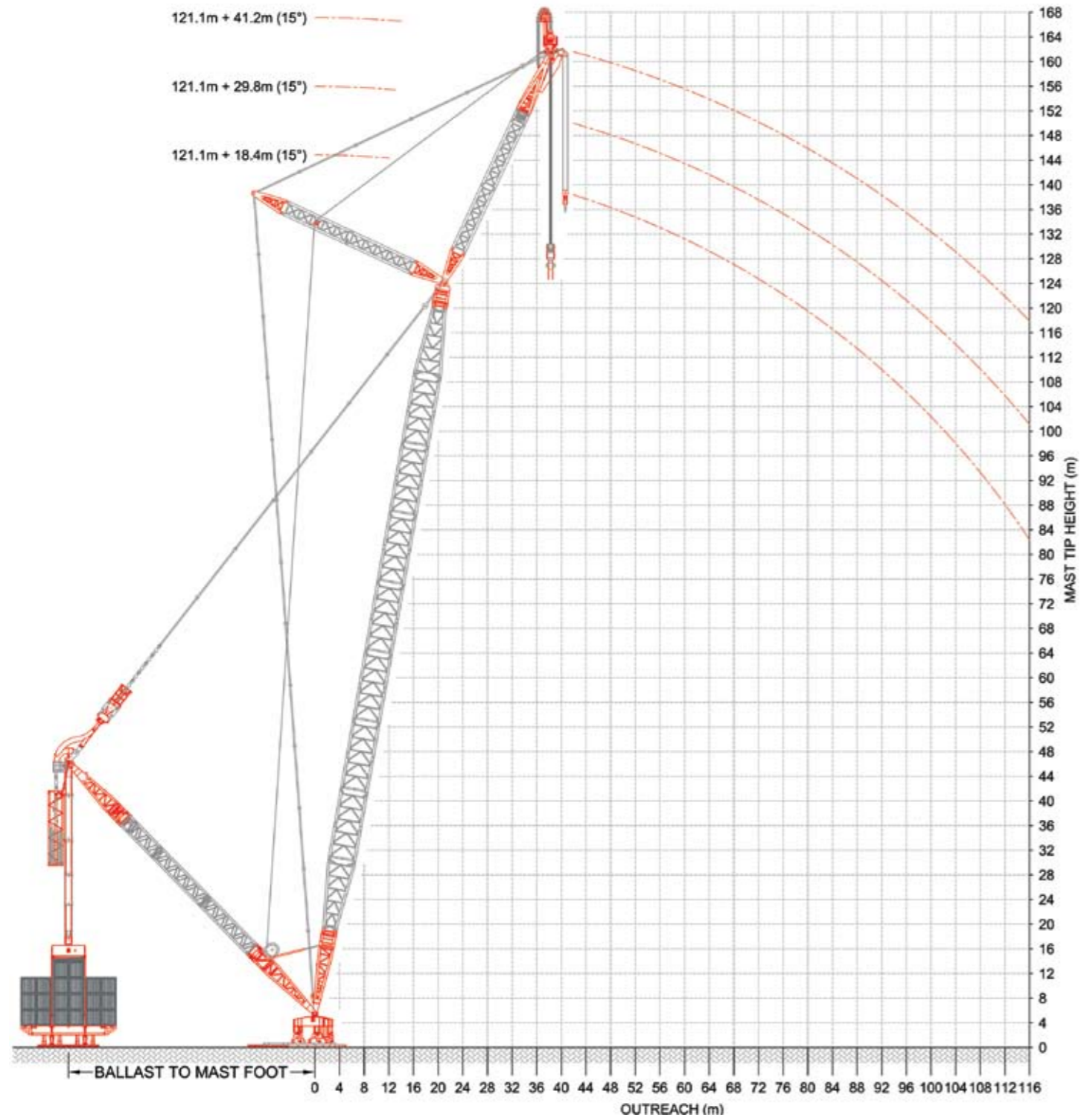
AL.SK350	Main Mast Using Quick Winch System							
	40.0m Ballast to Mast Foot							
	60.8m Main Mast	72.4m Main Mast	84.0m Main Mast	95.4m Main Mast	106.9m Main Mast	118.3m Main Mast	129.8m Main Mast	141.2m Main Mast
10	-	-	-	-	-	-	-	-
12	600	-	-	-	-	-	-	-
14	600	600	-	-	-	-	-	-
16	600	600	600	-	-	-	-	-
18	600	600	600	600	-	-	-	-
20	600	600	600	600	600	-	-	-
22	600	600	600	600	600	600	-	-
24	600	600	600	600	600	600	600	-
26	600	600	600	600	600	600	600	600
28	600	600	600	600	600	600	600	600
30	600	600	600	600	600	600	600	600
32	600	600	600	600	600	600	600	600
34	600	600	600	600	600	600	600	600
36	600	600	600	600	600	600	600	600
38	600	600	600	600	600	600	600	600
40	600	600	600	600	600	600	600	600
42	600	600	600	600	600	600	600	600
44	600	600	600	600	600	600	600	600
46	600	600	600	600	600	600	600	600
48	600	600	600	600	600	600	600	600
50	600	600	600	600	600	600	600	600
52	600	600	600	600	600	600	600	600
54	600	600	600	600	600	600	600	600
56	600	600	600	600	600	600	600	600
58	-	600	600	600	600	600	600	600
60	-	600	600	600	600	600	600	600
64	-	600	600	600	600	600	600	600
68	-	600	600	600	600	600	600	600
72	-	-	600	600	600	600	600	600
76	-	-	600	600	600	600	600	600
80	-	-	-	600	600	600	600	600
84	-	-	-	600	600	600	600	600
88	-	-	-	600	600	600	600	600
92	-	-	-	-	600	600	600	600
96	-	-	-	-	600	600	600	600
100	-	-	-	-	600	600	600	600
104	-	-	-	-	-	600	600	600
108	-	-	-	-	-	586	600	561
112	-	-	-	-	-	-	600	485
116	-	-	-	-	-	-	541	412
120	-	-	-	-	-	-	459	341
124	-	-	-	-	-	-	-	273
128	-	-	-	-	-	-	-	206

All lift capacities are 75% chart capacity in metric tonnes (t)
AL.SK350 with 4000t Ballast

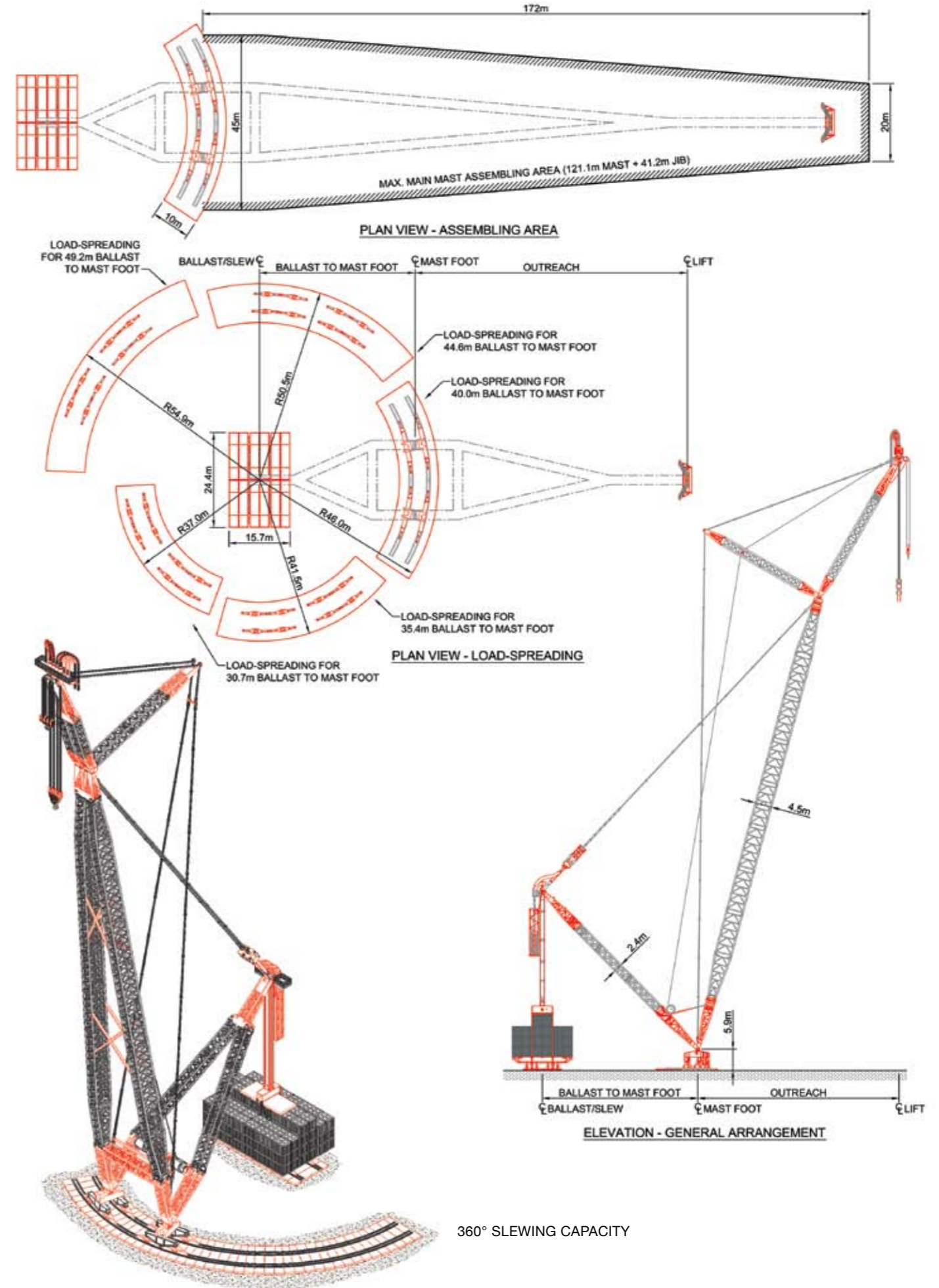
AL.SK350	Main Mast Using Quick Winch System							
	49.2m Ballast to Mast Foot							
	60.8m Main Mast	72.4m Main Mast	84.0m Main Mast	95.4m Main Mast	106.9m Main Mast	118.3m Main Mast	129.8m Main Mast	141.2m Main Mast
10	-	-	-	-	-	-	-	-
12	600	-	-	-	-	-	-	-
14	600	600	-	-	-	-	-	-
16	600	600	600	-	-	-	-	-
18	600	600	600	600	-	-	-	-
20	600	600	600	600	600	-	-	-
22	600	600	600	600	600	600	-	-
24	600	600	600	600	600	600	600	-
26	600	600	600	600	600	600	600	600
28	600	600	600	600	600	600	600	600
30	600	600	600	600	600	600	600	600
32	600	600	600	600	600	600	600	600
34	600	600	600	600	600	600	600	600
36	600	600	600	600	600	600	600	600
38	600	600	600	600	600	600	600	600
40	600	600	600	600	600	600	600	600
42	600	600	600	600	600	600	600	600
44	600	600	600	600	600	600	600	600
46	600	600	600	600	600	600	600	600
48	600	600	600	600	600	600	600	600
50	600	600	600	600	600	600	600	600
52	600	600	600	600	600	600	600	600
54	600	600	600	600	600	600	600	600
56	600	600	600	600	600	600	600	600
58	-	600	600	600	600	600	600	600
60	-	600	600	600	600	600	600	600
64	-	600	600	600	600	600	600	600
68	-	600	600	600	600	600	600	600
72	-	-	600	600	600	600	600	600
76	-	-	600	600	600	600	600	600
80	-	-	-	600	600	600	600	600
84	-	-	-	600	600	600	600	600
88	-	-	-	600	600	600	600	600
92	-	-	-	-	600	600	600	600
96	-	-	-	-	600	600	600	600
100	-	-	-	-	600	600	600	600
104	-	-	-	-	-	600	600	600
108	-	-	-	-	-	599	600	600
112	-	-	-	-	-	-	600	522
116	-	-	-	-	-	-	556	442
120	-	-	-	-	-	-	470	364
124	-	-	-	-	-	-	-	289
128	-	-	-	-	-	-	-	216

All lift capacities are 75% chart capacity in metric tonnes (t)
AL.SK350 with 4000t Ballast

AL.SK350 WITH FIXED JIB



AL.SK350 WITH FIXED JIB



360° SLEWING CAPACITY

AL.SK350 With Fixed Jib	86.7m Main Mast + 41.2m Fixed Jib									
	30.7m Ballast to Mast Foot									
	2000t Ballast		2500t Ballast		3000t Ballast		3500t Ballast		4000t Ballast	
Outreach (m)	Jib 15°	Jib 10°	Jib 15°	Jib 10°	Jib 15°	Jib 10°	Jib 15°	Jib 10°	Jib 15°	Jib 10°
20	-	2439	-	2969	-	2969	-	2969	-	2969
22	2214	2180	2773	2739	2812	2934	2812	2934	2812	2934
24	1995	1964	2507	2476	2783	2899	2783	2899	2783	2899
26	1810	1781	2282	2254	2754	2726	2754	2866	2754	2866
28	1651	1625	2090	2063	2528	2502	2727	2835	2727	2835
30	1531	1507	1923	1898	2332	2308	2701	2717	2701	2805
32	1411	1388	1776	1754	2160	2138	2544	2521	2675	2775
34	1304	1283	1647	1626	2009	1987	2370	2349	2651	2710
36	1209	1190	1551	1531	1874	1854	2215	2195	2556	2536
38	1125	1106	1448	1429	1753	1734	2076	2058	2399	2381
40	1048	1031	1355	1338	1644	1627	1951	1934	2258	2241
42	979	963	1272	1255	1564	1548	1838	1822	2131	2114
44	916	901	1195	1180	1475	1459	1735	1720	2015	1999
46	859	844	1126	1111	1393	1378	1641	1627	1909	1894
48	806	800	1062	1048	1318	1304	1574	1560	1811	1797
50	774	760	1003	990	1249	1235	1494	1481	1722	1709
52	729	716	949	936	1185	1172	1421	1409	1639	1627
54	687	675	898	886	1126	1114	1353	1341	1581	1569
56	648	637	852	840	1071	1060	1290	1279	1510	1498
58	612	602	808	800	1020	1009	1231	1221	1443	1432
60	579	568	783	773	972	962	1177	1166	1381	1371
64	518	508	709	700	885	876	1077	1068	1269	1260
68	463	455	644	636	808	800	989	981	1170	1161
72	415	407	586	578	756	749	911	903	1081	1074
76	372	365	533	526	695	688	840	833	1002	995
80	333	326	486	480	640	633	793	787	930	924
84	297	291	443	438	589	584	736	730	866	860
88	264	259	404	399	544	539	683	678	806	801
92	234	230	368	364	501	497	635	631	769	764
96	207	203	335	331	463	459	591	587	719	715
100	181	178	304	301	427	424	550	546	673	669
104	157	154	275	273	393	391	512	509	630	627
108	135	133	249	246	362	360	476	474	578	565
112	114	112	223	222	333	331	443	441	508	496
116	93	92	199	198	305	304	411	410	439	429
120	-	-	-	-	-	-	-	-	-	-

AL.SK350 With Fixed Jib	98.2m Main Mast + 41.2m Fixed Jib									
	30.7m Ballast to Mast Foot									
	2000t Ballast		2500t Ballast		3000t Ballast		3500t Ballast		4000t Ballast	
Outreach (m)	Jib 15°	Jib 10°	Jib 15°	Jib 10°	Jib 15°	Jib 10°	Jib 15°	Jib 10°	Jib 15°	Jib 10°
20	-	-	-	2986	-	2986	-	2986	-	2986
22	-	-	-	2725	-	2953	-	2953	-	2953
24	-	-	2496	2462	2796	2921	2796	2921	2796	2921
26	-	-	2271	2239	2743	2711	2769	2890	2769	2890
28	-	-	2077	2048	2515	2486	2744	2859	2744	2859
30	-	-	1909	1882	2318	2291	2719	2701	2719	2830
32	-	-	1762	1737	2146	2120	2529	2504	2695	2802
34	-	-	1632	1608	1993	1970	2355	2331	2672	2692
36	-	-	1536	1513	1858	1836	2199	2177	2540	2518
38	-	-	1432	1411	1737	1716	2060	2039	2383	2362
40	-	-	1339	1320	1627	1608	1934	1915	2242	2222
42	-	-	1255	1237	1547	1529	1821	1803	2113	2095
44	-	-	1178	1161	1458	1440	1718	1700	1997	1980
46	-	-	1108	1092	1375	1359	1624	1607	1891	1874
48	-	-	1044	1029	1300	1284	1556	1540	1793	1777
50	-	-	985	970	1231	1216	1476	1462	1703	1688
52	-	-	931	916	1167	1153	1403	1389	1620	1606
54	-	-	880	866	1107	1094	1335	1321	1562	1549
56	-	-	833	820	1052	1039	1272	1259	1491	1478
58	-	-	800	794	1001	989	1213	1200	1425	1412
60	-	-	765	754	953	941	1158	1146	1362	1351
64	-	-	691	681	866	855	1058	1047	1250	1239
68	-	-	626	616	800	796	970	960	1150	1141
72	-	-	567	558	738	729	891	882	1062	1053
76	-	-	515	506	676	668	821	813	982	974
80	-	-	467	460	621	613	774	767	911	903
84	-	-	424	418	571	564	717	710	846	839
88	-	-	385	379	525	518	664	658	800	798
92	-	-	349	344	483	477	616	611	750	744
96	-	-	316	311	444	439	572	567	700	695
100	-	-	285	281	408	404	531	527	654	649
104	-	-	257	253	375	371	493	489	611	607
108	-	-	231	227	344	341	458	455	572	568
112	-	-	206	203	315	312	425	422	534	531
116	-	-	182	180	288	286	394	392	497	494
120	-	-	160	158	263	261	365	363	459	448

AL.SK350 With Fixed Jib	109.6m Main Mast + 41.2m Fixed Jib									
	30.7m Ballast to Mast Foot									
	2000t Ballast		2500t Ballast		3000t Ballast		3500t Ballast		4000t Ballast	
Outreach (m)	Jib 15°	Jib 10°	Jib 15°	Jib 10°	Jib 15°	Jib 10°	Jib 15°	Jib 10°	Jib 15°	Jib 10°
22	-	-	-	2713	-	2968	-	2968	-	2968
24	-	-	2486	2448	2807	2938	2807	2938	2807	2938
26	-	-	2259	2224	2731	2696	2782	2909	2782	2909
28	-	-	2064	2032	2503	2471	2758	2880	2758	2880
30	-	-	1895	1865	2305	2275	2714	2684	2734	2852
32	-	-	1747	1720	2131	2103	2515	2487	2712	2826
34	-	-	1617	1601	1978	1952	2340	2314	2689	2675
36	-	-	1521	1496	1842	1818	2183	2159	2525	2500
38	-	-	1417	1394	1720	1697	2044	2021	2367	2344
40	-	-	1323	1302	1611	1601	1918	1896	2225	2203
42	-	-	1239	1218	1531	1511	1804	1783	2096	2076
44	-	-	1162	1142	1441	1421	1700	1681	1980	1960
46	-	-	1091	1073	1358	1340	1606	1601	1873	1854
48	-	-	1027	1009	1283	1265	1539	1521	1775	1757
50	-	-	967	951	1213	1196	1459	1442	1685	1668
52	-	-	913	897	1149	1133	1385	1369	1602	1601
54	-	-	862	847	1089	1074	1317	1302	1544	1529
56	-	-	815	800	1034	1020	1253	1239	1473	1458
58	-	-	789	775	982	969	1194	1180	1406	1392
60	-	-	748	734	934	921	1139	1126	1344	1330
64	-	-	673	661	847	835	1039	1027	1231	1219
68	-	-	607	596	788	777	950	939	1131	1120
72	-	-	548	538	719	709	872	861	1042	1032
76	-	-	496	486	657	648	801	800	963	953
80	-	-	448	440	602	593	755	747	891	882
84	-	-	405	397	552	544	698	690	826	818
88	-	-	366	359	506	498	645	638	785	777
92	-	-	330	323	464	457	597	590	731	724
96	-	-	297	291	425	419	553	547	681	675
100	-	-	266	261	389	384	512	507	635	629
104	-	-	238	233	356	35	474	469	592	587
108	-	-	212	207	325	321	439	435	551	545
112	-	-	187	183	297	293	406	402	511	506
116	-	-	164	160	270	266	376	372	474	470
120	-	-	142	139	245	241	347	344	439	436
124	-	-	122	119	221	218	320	317	407	404
128	-	-	102	100	198	196	294	292	376	373
132	-	-	84	82	177	175	270	268	346	342

AL.SK350 With Fixed Jib	121.1m Main Mast + 41.2m Fixed Jib									
	30.7m Ballast to Mast Foot									
	2000t Ballast		2500t Ballast		3000t Ballast		3500t Ballast		4000t Ballast	
Outreach (m)	Jib 15°	Jib 10°	Jib 15°	Jib 10°	Jib 15°	Jib 10°	Jib 15°	Jib 10°	Jib 15°	Jib 10°
22	-	-	-	-	-	2923	-	2923	-	2923
24	-	-	-	-	-	2843	-	2843	-	2843
26	-	-	-	-	2660	2681	2660	2766	2660	2766
28	-	-	-	-	2490	2454	2590	2694	2590	2694
30	-	-	-	-	2291	2258	2523	2625	2523	2625
32	-	-	-	-	2116	2086	2461	2470	2461	2560
34	-	-	-	-	1963	1934	2324	2295	2401	2498
36	-	-	-	-	1826	1799	2167	2140	2345	2439
38	-	-	-	-	1704	1678	2027	2002	2291	2325
40	-	-	-	-	1601	1590				

AL.SK350 With Fixed Jib	86.7m Main Mast + 41.2m Fixed Jib									
	40.0m Ballast to Mast Foot									
	2000t Ballast		2500t Ballast		3000t Ballast		3500t Ballast		4000t Ballast	
Outreach (m)	Jib 15°	Jib 10°	Jib 15°	Jib 10°	Jib 15°	Jib 10°	Jib 15°	Jib 10°	Jib 15°	Jib 10°
20	-	2969	-	2969	-	2969	-	2969	-	2969
22	2812	2927	2812	2934	2812	2934	2812	2934	2812	2934
24	2680	2649	2783	2899	2783	2899	2783	2899	2783	2899
26	2442	2413	2754	2866	2754	2866	2754	2866	2754	2866
28	2237	2211	2727	2783	2727	2835	2727	2835	2727	2835
30	2061	2036	2594	2570	2701	2805	2701	2805	2701	2805
32	1906	1883	2406	2383	2675	2775	2675	2775	2675	2775
34	1769	1748	2240	2218	2651	2689	2651	2747	2651	2747
36	1647	1628	2092	2072	2536	2516	2628	2720	2628	2720
38	1557	1538	1960	1941	2381	2362	2606	2693	2606	2693
40	1459	1441	1841	1823	2241	2223	2584	2623	2584	2668
42	1370	1354	1733	1716	2114	2097	2495	2478	2564	2644
44	1289	1274	1635	1619	1998	1983	2362	2346	2544	2620
46	1216	1201	1563	1549	1893	1878	2241	2226	2525	2574
48	1148	1134	1481	1467	1796	1782	2130	2116	2461	2449
50	1086	1072	1406	1392	1707	1694	2027	2014	2347	2334
52	1028	1016	1336	1323	1625	1613	1933	1920	2241	2228
54	975	963	1271	1259	1567	1555	1845	1833	2142	2130
56	925	914	1211	1200	1497	1485	1764	1753	2050	2038
58	879	868	1155	1144	1431	1420	1688	1678	1964	1953
60	836	826	1103	1092	1369	1359	1618	1607	1884	1874
64	774	764	1008	998	1258	1248	1508	1498	1739	1730
68	705	696	924	915	1159	1150	1394	1386	1611	1603
72	643	635	849	841	1071	1063	1293	1286	1515	1508
76	587	580	798	791	992	985	1203	1196	1413	1406
80	537	531	737	731	921	915	1121	1115	1321	1315
84	492	486	682	677	857	851	1047	1041	1238	1232
88	450	445	632	627	800	800	980	975	1161	1141
92	412	408	586	582	760	756	918	913	1063	1043
96	377	373	544	540	711	707	861	857	969	950
100	345	341	505	501	665	661	808	805	880	862
104	314	312	468	465	622	619	776	773	800	795
108	286	284	434	432	582	580	728	713	728	713
112	259	258	402	401	545	543	645	631	645	631
116	234	233	372	371	510	509	561	548	561	548
120	-	-	-	-	-	-	-	-	-	-

AL.SK350 With Fixed Jib	98.2m Main Mast + 41.2m Fixed Jib									
	40.0m Ballast to Mast Foot									
	2000t Ballast		2500t Ballast		3000t Ballast		3500t Ballast		4000t Ballast	
Outreach (m)	Jib 15°	Jib 10°	Jib 15°	Jib 10°	Jib 15°	Jib 10°	Jib 15°	Jib 10°	Jib 15°	Jib 10°
20	-	2986	-	2986	-	2986	-	2986	-	2986
22	-	2914	-	2953	-	2953	-	2953	-	2953
24	2670	2635	2796	2921	2796	2921	2796	2921	2796	2921
26	2430	2399	2769	2890	2769	2890	2769	2890	2769	2890
28	2225	2196	2744	2767	2744	2859	2744	2859	2744	2859
30	2047	2020	2581	2554	2719	2830	2719	2830	2719	2830
32	1892	1866	2392	2366	2695	2802	2695	2802	2695	2802
34	1754	1731	2225	2201	2672	2672	2672	2776	2672	2776
36	1632	1610	2076	2054	2521	2499	2650	2749	2650	2749
38	1542	1521	1944	1923	2365	2344	2628	2724	2628	2724
40	1443	1423	1824	1805	2224	2205	2608	2605	2608	2700
42	1354	1335	1716	1697	2097	2078	2478	2459	2588	2676
44	1273	1255	1617	1601	1981	1964	2345	2327	2569	2654
46	1199	1182	1546	1530	1875	1859	2223	2207	2550	2554
48	1131	1115	1464	1448	1778	1763	2112	2096	2445	2429
50	1068	1053	1388	1373	1689	1674	2009	1994	2329	2314
52	1010	996	1318	1304	1607	1601	1915	1900	2222	2208
54	957	943	1253	1240	1549	1536	1827	1813	2123	2109
56	907	894	1193	1180	1478	1466	1745	1732	2031	2018
58	861	848	1137	1124	1412	1400	1669	1657	1945	1933
60	817	806	1084	1072	1351	1339	1601	1601	1865	1853
64	756	745	989	978	1239	1228	1489	1478	1720	1709
68	686	677	904	895	1140	1130	1375	1365	1601	1601
72	624	615	829	821	1052	1043	1274	1265	1496	1487
76	569	561	779	771	973	965	1183	1175	1394	1386
80	519	511	719	711	902	894	1102	1094	1302	1294
84	473	466	664	657	837	830	1028	1021	1218	1211
88	432	426	614	607	795	789	960	954	1142	1136
92	394	388	568	562	742	736	898	893	1072	1067
96	359	354	525	520	692	687	842	836	1008	1003
100	326	322	486	482	646	642	800	800	949	937
104	296	292	450	446	604	600	758	754	874	857
108	268	265	416	413	565	561	713	709	800	800
112	242	239	385	382	528	525	671	668	742	727
116	217	215	355	353	493	491	631	629	669	655
120	194	192	327	325	461	459	594	585	598	585

AL.SK350 With Fixed Jib	109.6m Main Mast + 41.2m Fixed Jib									
	40.0m Ballast to Mast Foot									
	2000t Ballast		2500t Ballast		3000t Ballast		3500t Ballast		4000t Ballast	
Outreach (m)	Jib 15°	Jib 10°	Jib 15°	Jib 10°	Jib 15°	Jib 10°	Jib 15°	Jib 10°	Jib 15°	Jib 10°
22	-	2902	-	2968	-	2968	-	2968	-	2968
24	2660	2622	2807	2938	2807	2938	2807	2938	2807	2938
26	2419	2385	2782	2909	2782	2909	2782	2909	2782	2909
28	2213	2181	2758	2752	2758	2880	2758	2880	2758	2880
30	2034	2004	2568	2538	2734	2852	2734	2852	2734	2852
32	1878	1850	2378	2350	2712	2826	2712	2826	2712	2826
34	1740	1714	2210	2184	2681	2655	2689	2800	2689	2800
36	1617	1601	2061	2037	2506	2481	2669	2775	2669	2775
38	1527	1504	1928	1905	2349	2326	2648	2747	2648	2751
40	1428	1406	1808	1786	2208	2186	2608	2586	2628	2728
42	1338	1317	1699	1679	2080	2060	2461	2441	2609	2705
44	1256	1237	1601	1601	1964	1945	2328	2308	2591	2672
46	1182	1164	1530	1511	1858	1840	2206	2187	2554	2535
48	1114	1096	1447	1429	1761	1743	2094	2077	2427	2410
50	1051	1034	1371	1354	1671	1655	1991	1975	2311	2295
52	993	977	1300	1285	1601	1592	1880	1880	2204	2188
54	939	924	1235	1220	1532	1516	1808	1793	2105	2089
56	889	874	1175	1160	1460	1446	1727	1712	2012	1998
58	842	829	1118	1104	1394	1380	1650	1637	1926	1912
60	800	800	1066	1052	1332	1319	1599	1586	1846	1833
64	738	726	970	958	1220	1208	1470	1458	1700	1688
68	668	657	885	874	1121	1110	1356	1345	1591	1580
72	606	596	810	800	1032	1022	1255	1244	1477	1467
76	550	541	761	752	953	944	1164	1154	1374	1365
80	500	491	700	691	882	873	1082	1073	1282	1273
84	455	447	645	637	817	809	1008	1000	1198	1190
88	413	406	595	587	777	769	940	933	1122	1115
92	375	368	549	542	723	716	878	872	1052	1046
96	340	334	507	500	673	667	822	816	988	982
100	307	302	467	462	627	622	787	782	929	924
104	278	272	431	426	585	580	739	734	875	870
108	250	245	398	393	546	541	694	689	824	820
112	224	219	366	362	509	505	652	648	795	785
116	199	196	337	333	475	471	613	609	732	718
120	176	173	309	306	443	440	576	573	668	654
124	154	152	283	281	413	410	542	539	604	592
128	134	132	259	257	384	382	509	507	542	530
132	114	113	236	234	357	355	478	469	480	469

AL.SK350 With Fixed Jib	121.1m Main Mast + 41.2m Fixed Jib									
	40.0m Ballast to Mast Foot									
	2000t Ballast		2500t Ballast		3000t Ballast		3500t Ballast		4000t Ballast	
Outreach (m)	Jib 15°	Jib 10°	Jib 15°	Jib 10°	Jib 15°	Jib 10°	Jib 15°	Jib 10°	Jib 15°	Jib 10°
22	-	2890	-	2982	-	2982	-	2982	-	2982
24	-	2608	-	2953	-	2953	-	2953	-	2953

AL.SK350 With Fixed Jib	86.7m Main Mast + 41.2m Fixed Jib									
	49.2m Ballast to Mast Foot									
	2000t Ballast		2500t Ballast		3000t Ballast		3500t Ballast		4000t Ballast	
Outreach (m)	Jib 15°	Jib 10°	Jib 15°	Jib 10°	Jib 15°	Jib 10°	Jib 15°	Jib 10°	Jib 15°	Jib 10°
20	-	2969	-	2969	-	2969	-	2969	-	2969
22	2812	2934	2812	2934	2812	2934	2812	2934	2812	2934
24	2783	2899	2783	2899	2783	2899	2783	2899	2783	2899
26	2754	2866	2754	2866	2754	2866	2754	2866	2754	2866
28	2727	2799	2727	2835	2727	2835	2727	2835	2727	2835
30	2609	2585	2701	2805	2701	2805	2701	2805	2701	2805
32	2420	2397	2675	2775	2675	2775	2675	2775	2675	2775
34	2253	2232	2651	2747	2651	2747	2651	2747	2651	2747
36	2104	2084	2628	2631	2628	2720	2628	2720	2628	2720
38	1971	1953	2489	2470	2606	2693	2606	2693	2606	2693
40	1852	1834	2344	2326	2584	2668	2584	2668	2584	2668
42	1743	1727	2212	2195	2564	2644	2564	2644	2564	2644
44	1645	1629	2092	2076	2539	2523	2544	2620	2544	2620
46	1573	1558	1983	1968	2410	2395	2525	2598	2525	2598
48	1491	1477	1882	1868	2292	2278	2461	2577	2461	2577
50	1415	1401	1790	1776	2183	2170	2390	2556	2390	2556
52	1344	1332	1704	1692	2083	2070	2323	2448	2323	2536
54	1279	1267	1625	1613	1990	1978	2260	2342	2260	2518
56	1219	1207	1570	1559	1903	1892	2200	2243	2200	2461
58	1162	1152	1502	1491	1823	1812	2143	2151	2143	2343
60	1110	1100	1438	1427	1747	1737	2075	2065	2089	2233
64	1014	1005	1322	1312	1611	1601	1918	1909	1988	2031
68	930	921	1219	1211	1509	1500	1771	1883	1883	1852
72	855	847	1128	1120	1401	1393	1656	1648	1720	1690
76	800	796	1046	1039	1305	1298	1564	1557	1592	1564
80	743	736	966	966	1218	1212	1457	1430	1457	1430
84	687	682	905	900	1139	1134	1333	1307	1333	1307
88	637	632	844	839	1068	1063	1217	1193	1217	1193
92	591	586	800	800	1002	998	1109	1086	1109	1086
96	548	544	753	749	942	938	1007	986	1007	986
100	509	505	705	702	886	882	911	890	911	890
104	472	469	661	658	818	800	818	800	818	800
108	438	435	620	618	746	728	746	728	746	728
112	405	404	581	579	656	640	656	640	656	640
116	375	374	545	544	565	551	565	551	565	551
120	-	-	-	-	-	-	-	-	-	-

AL.SK350 With Fixed Jib	98.2m Main Mast + 41.2m Fixed Jib									
	49.2m Ballast to Mast Foot									
	2000t Ballast		2500t Ballast		3000t Ballast		3500t Ballast		4000t Ballast	
Outreach (m)	Jib 15°	Jib 10°	Jib 15°	Jib 10°	Jib 15°	Jib 10°	Jib 15°	Jib 10°	Jib 15°	Jib 10°
20	-	2986	-	2986	-	2986	-	2986	-	2986
22	-	2953	-	2953	-	2953	-	2953	-	2953
24	2796	2921	2796	2921	2796	2921	2796	2921	2796	2921
26	2769	2890	2769	2890	2769	2890	2769	2890	2769	2890
28	2744	2784	2744	2859	2744	2859	2744	2859	2744	2859
30	2596	2569	2719	2830	2719	2830	2719	2830	2719	2830
32	2406	2381	2695	2802	2695	2802	2695	2802	2695	2802
34	2238	2215	2672	2776	2672	2776	2672	2776	2672	2776
36	2089	2067	2636	2614	2650	2749	2650	2749	2650	2749
38	1956	1935	2474	2453	2628	2724	2628	2724	2628	2724
40	1836	1816	2327	2308	2608	2700	2608	2700	2608	2700
42	1727	1708	2195	2177	2588	2645	2588	2676	2588	2676
44	1628	1610	2075	2058	2522	2505	2569	2654	2569	2654
46	1556	1540	1965	1949	2393	2376	2550	2632	2550	2632
48	1474	1458	1865	1849	2274	2259	2533	2611	2533	2611
50	1397	1382	1772	1757	2165	2150	2516	2544	2516	2590
52	1327	1313	1686	1672	2065	2050	2443	2429	2500	2571
54	1262	1248	1607	1601	1971	1958	2336	2322	2438	2552
56	1201	1188	1552	1539	1885	1872	2236	2223	2376	2534
58	1144	1132	1484	1471	1804	1791	2143	2131	2317	2440
60	1092	1080	1419	1408	1728	1717	2056	2044	2261	2328
64	996	985	1303	1292	1601	1600	1899	1888	2156	2125
68	911	901	1200	1190	1490	1480	1760	1750	1974	1944
72	836	827	1109	1100	1382	1373	1636	1627	1810	1782
76	785	777	1027	1019	1286	1277	1545	1536	1662	1635
80	724	717	953	945	1199	1191	1445	1437	1548	1523
84	669	662	886	879	1120	1113	1354	1347	1424	1400
88	618	612	825	819	1048	1042	1272	1266	1310	1286
92	572	567	786	780	983	977	1197	1181	1203	1181
96	530	525	735	730	922	917	1104	1083	1104	1083
100	490	486	687	683	867	862	1010	990	1010	990
104	454	450	643	639	815	811	921	902	921	902
108	420	417	602	599	784	781	837	818	837	818
112	388	385	564	561	740	737	775	757	775	757
116	359	356	528	526	695	695	679	679	695	679
120	330	328	494	492	617	602	617	602	617	602

AL.SK350 With Fixed Jib	109.6m Main Mast + 41.2m Fixed Jib									
	49.2m Ballast to Mast Foot									
	2000t Ballast		2500t Ballast		3000t Ballast		3500t Ballast		4000t Ballast	
Outreach (m)	Jib 15°	Jib 10°	Jib 15°	Jib 10°	Jib 15°	Jib 10°	Jib 15°	Jib 10°	Jib 15°	Jib 10°
22	-	2968	-	2968	-	2968	-	2968	-	2968
24	2807	2938	2807	2938	2807	2938	2807	2938	2807	2938
26	2782	2909	2782	2909	2782	2909	2782	2909	2782	2909
28	2758	2769	2758	2880	2758	2880	2758	2880	2758	2880
30	2584	2554	2734	2852	2734	2852	2734	2852	2734	2852
32	2393	2365	2712	2826	2712	2826	2712	2826	2712	2826
34	2224	2198	2689	2777	2689	2800	2689	2800	2689	2800
36	2075	2050	2621	2597	2669	2775	2669	2775	2669	2775
38	1941	1918	2458	2435	2648	2751	2648	2751	2648	2751
40	1820	1798	2312	2290	2628	2728	2628	2728	2628	2728
42	1711	1690	2179	2159	2609	2627	2609	2705	2609	2705
44	1611	1601	2058	2039	2506	2486	2591	2683	2591	2683
46	1540	1522	1948	1930	2376	2357	2573	2662	2573	2662
48	1457	1439	1847	1830	2257	2239	2556	2641	2556	2641
50	1380	1364	1754	1737	2148	2131	2539	2524	2539	2622
52	1309	1294	1668	1652	2047	2031	2425	2409	2523	2602
54	1244	1229	1601	1593	1953	1938	2317	2302	2508	2584
56	1183	1169	1534	1520	1866	1852	2217	2203	2493	2554
58	1126	1112	1465	1452	1771	1754	2124	2110	2464	2450
60	1073	1060	1401	1388	1710	1696	2037	2024	2365	2352
64	977	965	1285	1272	1592	1580	1880	1868	2187	2175
68	892	881	1182	1170	1471	1460	1741	1729	2030	2002
72	817	806	1090	1080	1363	1353	1617	1606	1867	1841
76	767	757	1008	998	1266	1257	1525	1516	1720	1695
80	706	697	934	925	1179	1171	1425	1417	1601	1584
84	650	642	866	858	1101	1093	1335	1327	1485	1462
88	600	592	805	800	1029	1021	1252	1245	1372	1350
92	554	547	767	761	963	956	1177	1170	1267	1246
96	511	505	716	710	903	897	1108	1101	1170	1149
100	472	466	668	663	847	841	1044	1038	1078	1058
104	435	430	625	619	800	800	985	973	1038	1019
108	402	397	584	579	766	761	911	893	911	893
112	370	366	546	542	721	717	833	816	833	816
116	340	337	510	506	680	676	779	763	779	763
120	313	310	477	474	641	637	707	692	707	692
124	287	284	445	443	604	601	637	623	637	623
128	262	260	416	413	569	565	569	555	569	555
132	238	237	387	386	500	488	500	488	500	488

AL.SK350 With Fixed Jib	121.1m Main Mast + 41.2m Fixed Jib									
	49.2m Ballast to Mast Foot									
	2000t Ballast		2500t Ballast		3000t Ballast		3500t Ballast		4000t Ballast	
Outreach (m)	Jib 15°	Jib 10°	Jib 15°	Jib 10°	Jib 15°	Jib 10°	Jib 15°	Jib 10°	Jib 15°	Jib 10°
22	-	2982	-	2982	-	2982	-			

