

## Stair Tread Covers Installation Guide



### Apply Adhesive

Before installation make sure the surface is clean, dry and free from any loose material. If you are fixing to concrete steps that are badly worn it may be necessary to effect minor repairs. Installation is improved if the surface is reasonably flat and smooth. Apply adhesive in beads or dabs. *See below for estimated adhesive usage.*



### Set In Position

Set the cover in its final position by simply bedding it in. Apply pressure evenly over the whole tread.

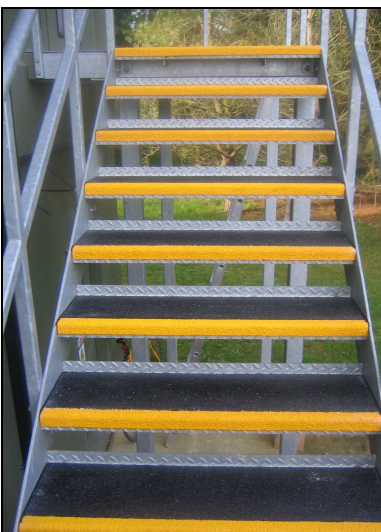
Occasionally you may wish to screw the tread covers down instead of (or as well as) using adhesive. We can pre-drill and countersink your covers free of charge.



### Seal Edges

Seal the edges to halt excessive moisture ingress with a black silicone sealant. We can supply adhesives for internal and external use. *Treads can be walked on after 6 hours.*

We can also supply sealants and stainless steel fixings if required.



### Finished Stairs

Our tread covers are supplied cut to size. If you need to trim the covers on site then use a hard metal blade such as a Bosch **T141 HM** or similar. Landing areas can also be cut to size using larger sheets of gritted plate.

### Adhesive usage

The amount of adhesive you need depends on the size of the cover and also the condition of the surface they are being bonded to. For a general guide for tread covers that are 250mm going and 1000mm wide, one 310ml tube will be needed for every three covers.

**Anglia Composites Ltd. Call our sales hotline now – 01787 377 322**