

# ZK L7000

Biometric Fingerprint Door Lock with Optional PIN Code Entry

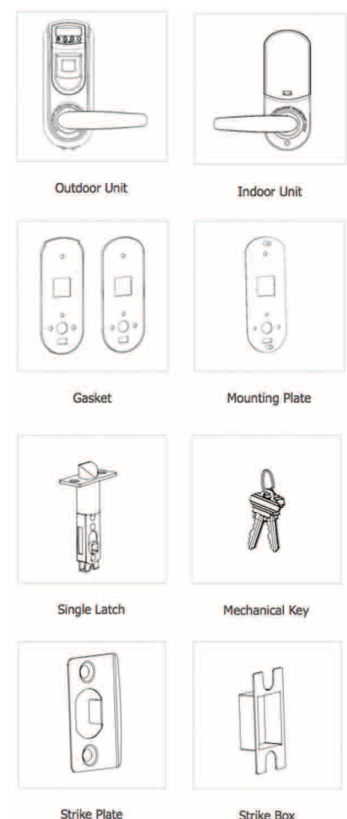
L7000 is a smart lock with embedded fingerprint recognition technology. It is DIY design, which can be installed on the door quickly. You even can do it by yourself.

## Function

- With the new generation fingerprint recognition algorithm.
- American standard single latch for fast installation and easy replacement.
- Handle,latch and strike is reversible design for all door open direction.
- Idle handle design to prevent from forcible entry.
- OLED display screen with visual menu.
- Three independent unlocking - fingerprint,password,mechanical Key.
- Smart alarm for low battery & illegal operation .
- Data upload/download via USB port .
- Normal Open mode .
- Support query door open logs.
- External terminals to draw back-up power from a 9V battery .
- Backset is adjustable (60mm or 70mm) .
- Access Timetable Management (optional).



## Package



## Technical Specifications

Material	Zinc Alloy
Fingerprint Capacity	500
Password Capacity	100
Log Capacity	30,000
Communication	USB flash disk (optional)
Operating Temperature	0 °C - 45 °C
Power Supply	4 × AA Alkaline Battery
Backup Unlock	Mechanical Key & 9V Battery